

# STATE OF COLORADO

## COLORADO DEPARTMENT OF CORRECTIONS

2862 South Circle Drive  
Colorado Springs, CO 80906-4195  
Phone: (719) 579-9580  
Fax: (719) 226-4755  
Web: www.doc.state.co.us



Bill Ritter, Jr.  
Governor

Aristedes W. Zavaras  
Executive Director

## MEMORANDUM

TO: Executive Staff  
Assistant Directors, Wardens and Parole Managers

FROM: Kim Mersman  
Statistical Analyst II  
Office of Planning and Analysis

DATE: January 29, 2010

RE: **December 2009 Prison Population Projections**

Attached are the December 2009 adult prison and parole population projections as completed and issued by the Division of Criminal Justice (D.C.J.) and Legislative Council (L.C.S.). The following charts are attached:

### Prison Population Projections

- Comparison of Prison Population Projections as issued by D.C.J. and L.C.S.-Table
- Comparison of Prison Population Projections as issued by D.C.J. and L.C.S.-Graph
- Comparison of D.C.J. Prison Population Projections – **December 2008 to December 2009 Issue**
- Comparison of L.C.S. Prison Population Projections – **December 2008 to December 2009 Issue**
- Comparison of **Female** Prison Population Projections as issued by D.C.J. and L.C.S.

### Parole Population Projections

- Comparison of Parole Population Projections as issued by D.C.J. and L.C.S.-Table
- Comparison of Parole Population Projections as issued by D.C.J. and L.C.S.-Graph

The domestic parole population includes regular, ISP and interstate-in caseloads. Interstate-in represents parolees supervised in Colorado from other states; whereas interstate-out of state counts reflect Colorado offenders being supervised in other states.

If you have any questions or need additional information regarding the projections, please contact our office at (719) 226-4374.

## COLORADO DEPARTMENT OF CORRECTIONS

Comparison of 2009 Prison Population Projections

As Issued by **Division of Criminal Justice**<sup>(1)</sup>

and **Legislative Council Staff**<sup>(2)</sup>

DATE (EOM)	DCJ PROJECTIONS <sup>(1)</sup>			LCS PROJECTIONS <sup>(2)</sup>			DIFFERENCE IN PROJECTIONS <sup>(3)</sup>	
	Dec-09 Projection	Dec-08 Projection	Difference	Dec-09 Projection	Dec-08 Projection	Difference	Dec-09	
Dec-09	22,560	23,770	(1,210)	22,910	23,885	(975)	(350)	(2)
Mar-10	22,415	23,944	(1,529)	22,772	24,044	(1,272)	(357)	(2)
Jun-10	22,280	24,114	(1,834)	22,633	24,203	(1,570)	(353)	(2)
Sep-10	22,071	24,218	(2,147)	22,512	24,369	(1,857)	(441)	(2)
Dec-10	21,828	24,304	(2,476)	22,391	24,536	(2,145)	(563)	(2)
Mar-11	21,718	24,606	(2,888)	22,270	24,703	(2,433)	(552)	(2)
Jun-11	21,669	24,826	(3,157)	22,148	24,870	(2,722)	(479)	(2)
Sep-11	21,563	24,920	(3,357)	22,056	25,042	(2,986)	(493)	(2)
Dec-11	21,445	25,020	(3,575)	21,964	25,214	(3,250)	(519)	(2)
Mar-12	21,460		21,460	21,872		21,872	(412)	(2)
Jun-12	21,530		21,530	21,780		21,780	(250)	(2)

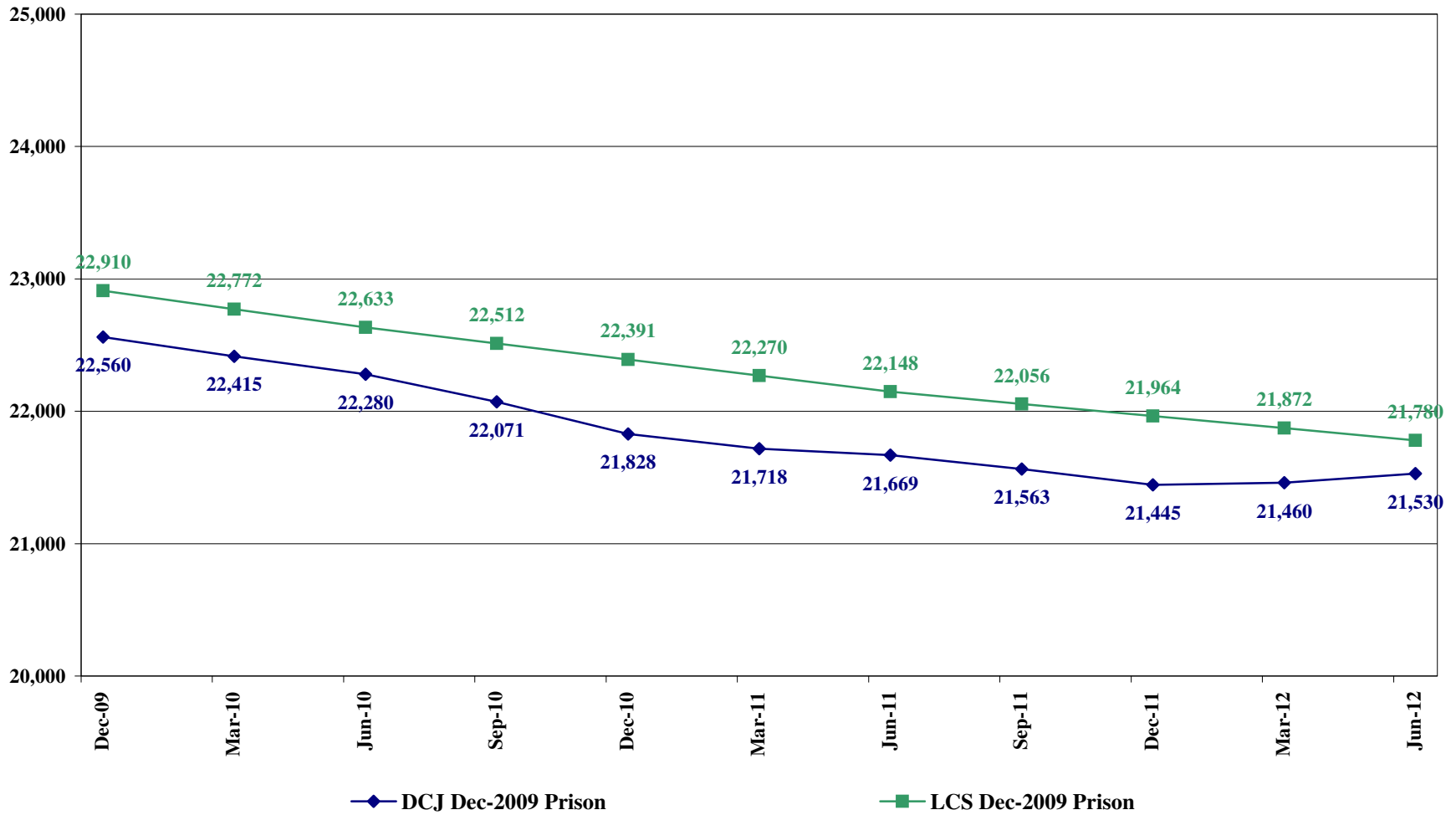
(1) Source : Colorado Division of Criminal Justice January 2010 Correctional Population Forecasts

(2) Source: Legislative Council Staff's Focus Colorado: Economic and Revenue Forecast, December 2009

(3) Agency Projecting the Higher Population.

## COLORADO DEPARTMENT OF CORRECTIONS

Comparison of Prison Population Projections as Issued by  
**Division of Criminal Justice<sup>(1)</sup> and Legislative Council Staff<sup>(2)</sup>**



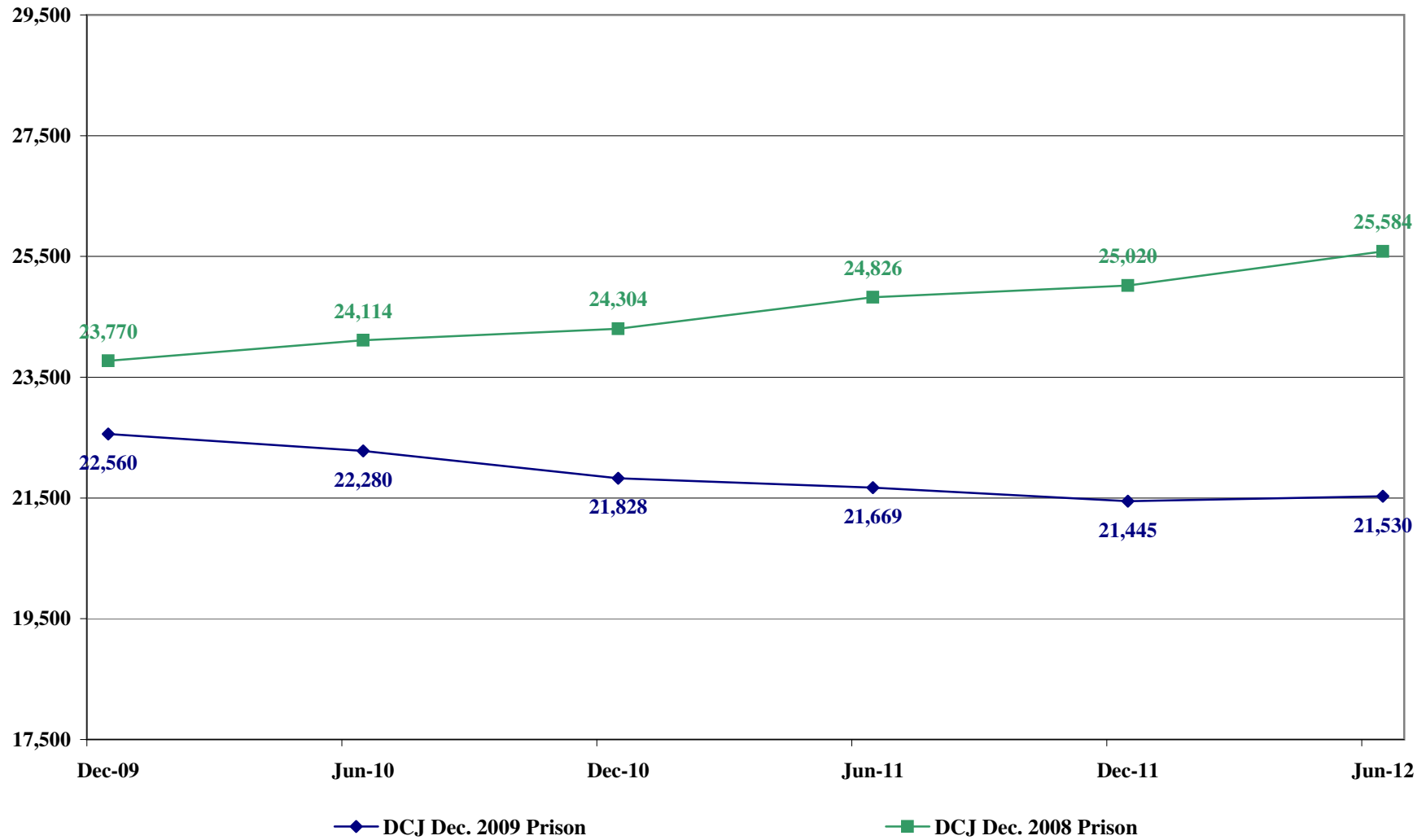
(1) Source: Colorado Division of Criminal Justice January 2010 Correctional Population Forecasts

(2) Source: Legislative Council Staff's Focus Colorado Economic and Revenue Forecast, December 2009

# COLORADO DEPARTMENT OF CORRECTIONS

Comparison to Prior Year Prison Population Projections

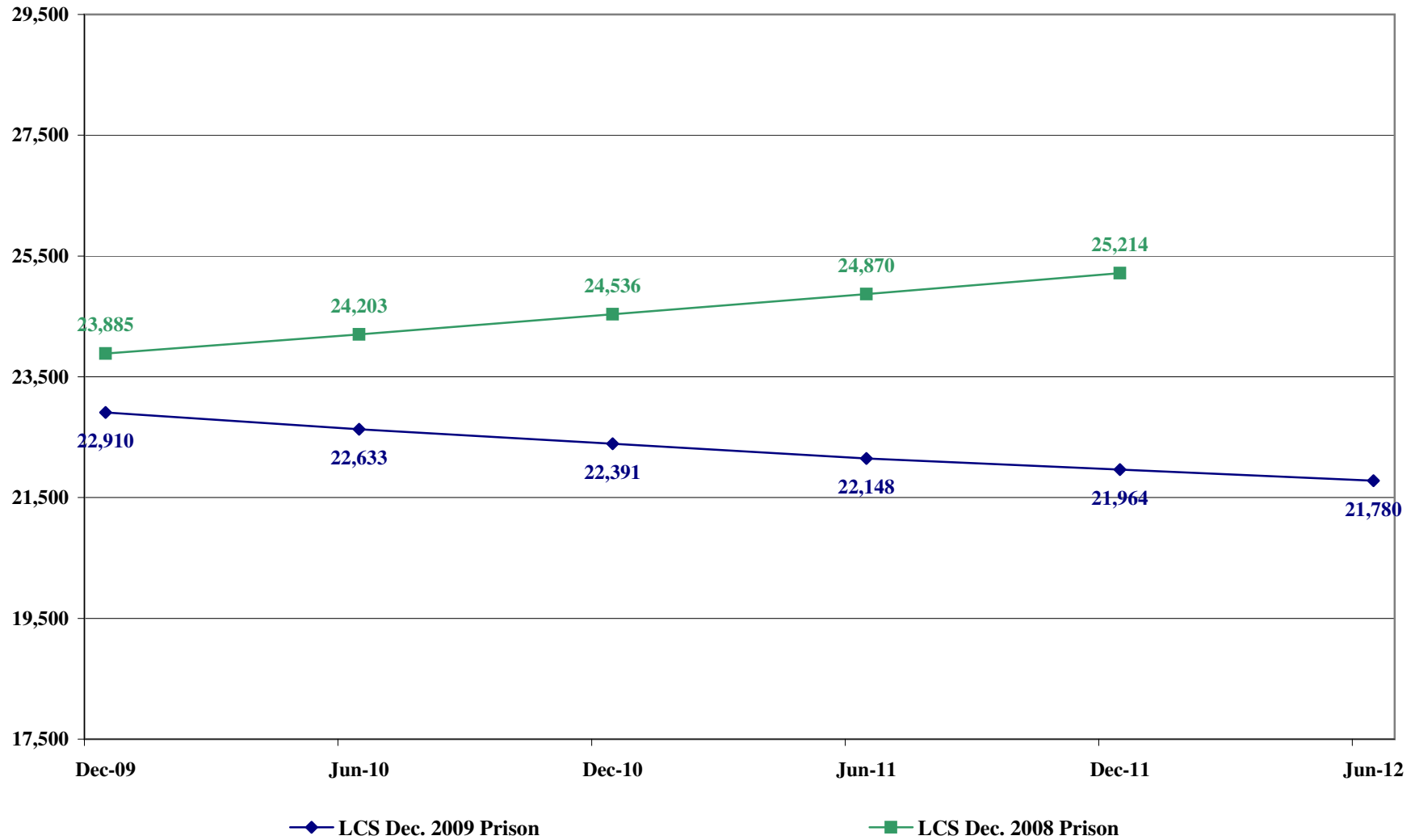
Division of Criminal Justice



# COLORADO DEPARTMENT OF CORRECTIONS

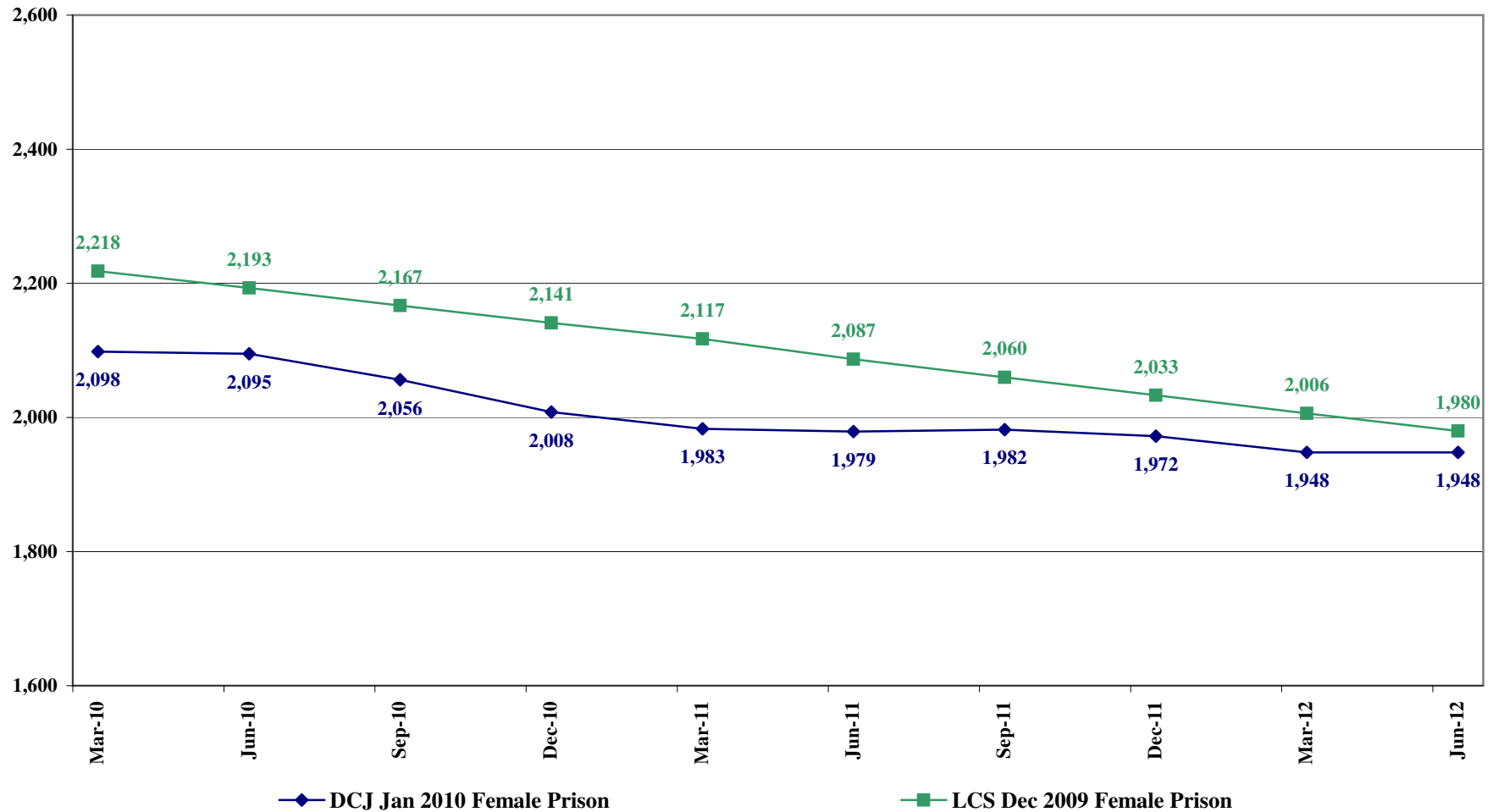
Comparison to Prior Year Prison Population Projections

Legislative Council Staff



## COLORADO DEPARTMENT OF CORRECTIONS

Comparison of **Female** Prison Population Projections as issued by  
**Division of Criminal Justice<sup>(1)</sup>** and **Legislative Council Staff<sup>(2)</sup>**



<sup>(1)</sup>Source: Colorado Division of Criminal Justice January 2010 Correctional Population Projections

<sup>(2)</sup>Source: Legislative Council Staff's Focus Colorado Economic and Revenue Forecast, December 2009.

## COLORADO DEPARTMENT OF CORRECTIONS

Comparison of 2009 Parole Population Projections

As Issued by **Division of Criminal Justice** <sup>(1)</sup>

and **Legislative Council Staff** <sup>(2)</sup>

DATE (EOM)	DCJ <sup>(1)</sup>				LCS <sup>(2)</sup>			DIFFERENCE IN PROJECTIONS <sup>(5)</sup>	
	Interstate				Interstate				
	Domestic <sup>(3)</sup>	Out	Absconders	Total	Domestic <sup>(3)</sup>	Out <sup>(4)</sup>	Total		
Jun-09	9,016	2,029	705	11,750	9,016	2,734	11,750	0	(-)
Jun-10	9,322	2,080	728	12,130	9,130	2,778	11,908	222	(1)
Jun-11	8,962	1,999	701	11,662	9,449	2,832	12,281	(619)	(2)
Jun-12	8,932	1,993	699	11,624	9,898	3,038	12,936	(1,312)	(2)

(1) Source: Colorado Division of Criminal Justice January 2010 Correctional Population Forecast

(2) Source: Legislative Council Staff's Focus Colorado: Economic and Revenue Forecast, December 2009

(3) Domestic includes regular, ISP and interstate in parole.

(4) Legislative Council Staff combines Interstate out and Absconders.

(5) Agency Projecting the Higher Population.

# COLORADO DEPARTMENT OF CORRECTIONS

## Parole Population Projections

Comparison of **Division of Criminal Justice<sup>(1)</sup>** and **Legislative Council Staff<sup>(2)</sup>**

