

# STATE OF COLORADO

## COLORADO DEPARTMENT OF CORRECTIONS

2862 South Circle Drive  
Colorado Springs, CO 80906-4195  
Phone: (719) 579-9580  
Fax: (719) 226-4755  
Web: www.doc.state.co.us



Bill Ritter, Jr.  
Governor

Aristedes W. Zavaras  
Executive Director

## MEMORANDUM

TO: Executive Staff  
Assistant Directors, Wardens and Parole Managers

FROM: Kim Mersman  
Statistical Analyst II  
Office of Planning and Analysis

DATE: March 4, 2009

RE: **December 2008 Prison Population Projections**

Attached are the December 2008 adult prison and parole population projections as completed and issued by the Division of Criminal Justice (DCJ) and Legislative Council (LCS). The following charts are attached:

### Prison Population Projections

- Comparison of Prison Population Projections as issued by DCJ and LCS-Table
- Comparison of Prison Population Projections as issued by DCJ and LCS-Graph
- Comparison of DCJ Prison Population Projections – **December 2007 to December 2008 Issue**
- Comparison of LCS Prison Population Projections – **December 2007 to December 2008 Issue**
- Comparison of **Female** Prison Population Projections as issued by DCJ and LCS

### Parole Population Projections

- Comparison of Parole Population Projections as issued by DCJ and LCS-Table
- Comparison of Parole Population Projections as issued by DCJ and LCS-Graph

The domestic parole population includes regular, ISP and interstate-in caseloads. Interstate-in represents parolees supervised in Colorado from other states, whereas interstate-out of state counts reflect Colorado offenders being supervised in other states.

If you have any questions or need additional information regarding the projections, please contact our office.

## COLORADO DEPARTMENT OF CORRECTIONS

Comparison of 2008 Prison Population Projections

As Issued by **Division of Criminal Justice**<sup>(1)</sup>

and **Legislative Council Staff**<sup>(2)</sup>

DATE (EOM)	DCJ PROJECTIONS <sup>(1)</sup>			LCS PROJECTIONS <sup>(2)</sup>			DIFFERENCE IN	
	Dec-08 Projection	Dec-07 Projection	Difference	Dec-08 Projection	Dec-07 Projection	Difference	Dec-08 PROJECTIONS <sup>(3)</sup>	
Dec-08	23,201	23,962	(761)	23,279	23,823	(545)	(78)	(2)
Mar-09	23,452	24,157	(705)	23,423	24,030	(607)	29	(1)
Jun-09	23,627	24,327	(700)	23,567	24,327	(760)	60	(1)
Sep-09	23,713	24,476	(763)	23,726	24,640	(914)	(13)	(2)
Dec-09	23,770	24,587	(817)	23,885	24,864	(979)	(115)	(2)
Mar-10	23,944	24,910	(966)	24,044	25,088	(1,044)	(100)	(2)
Jun-10	24,114	25,182	(1,068)	24,203	25,411	(1,208)	(89)	(2)
Sep-10	24,218	25,457	(1,239)	24,369	25,779	(1,410)	(151)	(2)
Dec-10	24,304	25,667	(1,363)	24,536	26,055	(1,519)	(232)	(2)
Mar-11	24,606	26,003	(1,397)	24,703	26,333	(1,630)	(97)	(2)
Jun-11	24,826	26,329	(1,503)	24,870	26,717	(1,847)	(44)	(2)
Sep-11	24,920	26,619	(1,699)	25,042	27,142	(2,100)	(122)	(2)
Dec-11	25,020	26,797	(1,777)	25,214	27,468	(2,254)	(194)	(2)
Mar-12	25,333	27,132	(1,799)	25,386	27,797	(2,411)	(53)	(2)
Jun-12	25,584	27,419	(1,835)	25,558	28,244	(2,686)	26	(1)

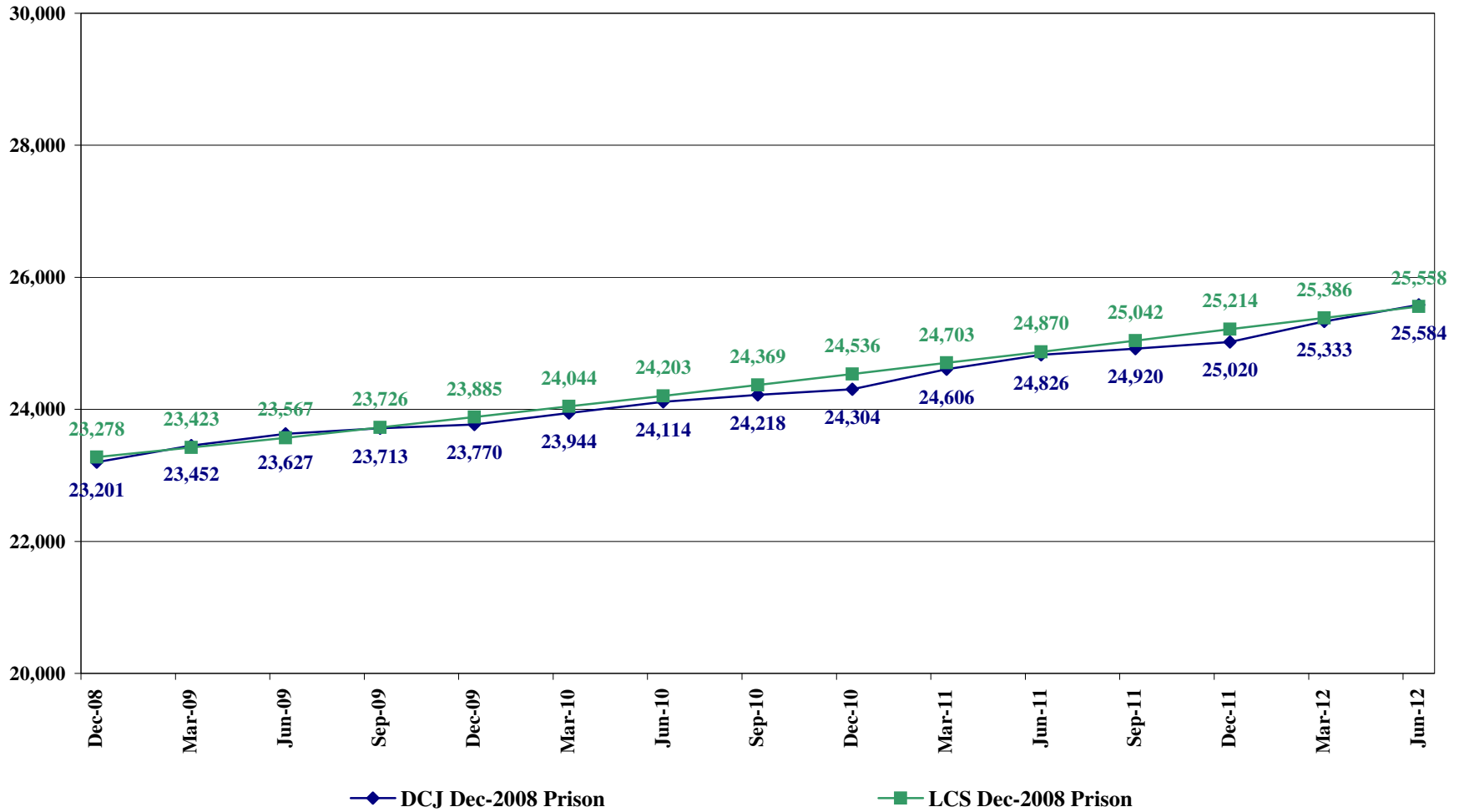
(1) Source : Colorado Division of Criminal Justice December 2008 Correctional Population Forecasts

(2) Source: Legislative Council Staff's Focus Colorado: Economic and Revenue Forecast, 2008-2012

(3) Agency Projecting the Higher Population.

# COLORADO DEPARTMENT OF CORRECTIONS

Comparison of Prison Population Projections as Issued by  
**Division of Criminal Justice<sup>(1)</sup> and Legislative Council Staff<sup>(2)</sup>**



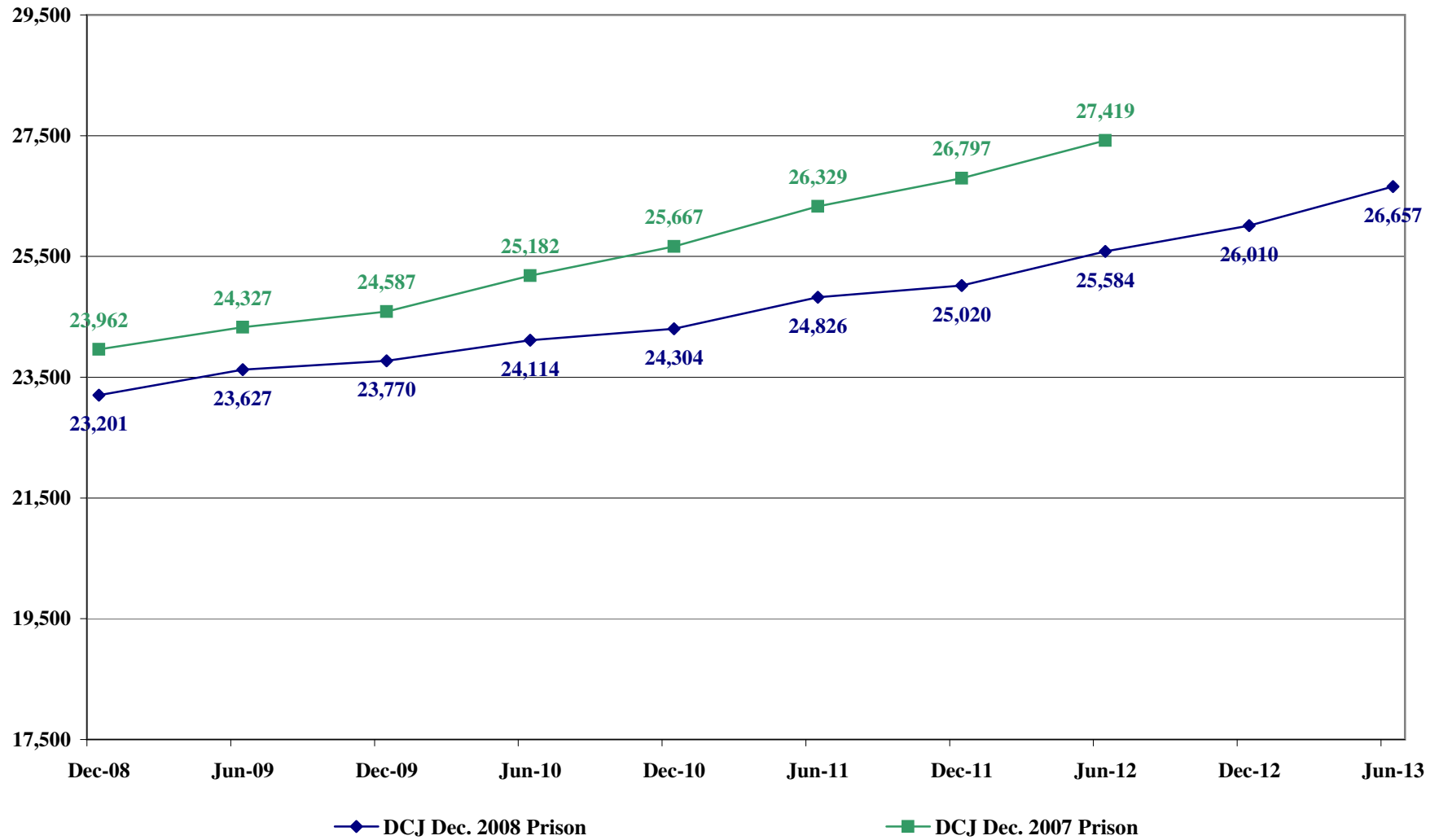
(1) Source: Colorado Division of Criminal Justice December 2008 Prison Projections

(2) Source: Legislative Council Staff's Focus Colorado Economic and Revenue Forecast, 2008-2012.

# COLORADO DEPARTMENT OF CORRECTIONS

Comparison to Prior Year Prison Population Projections

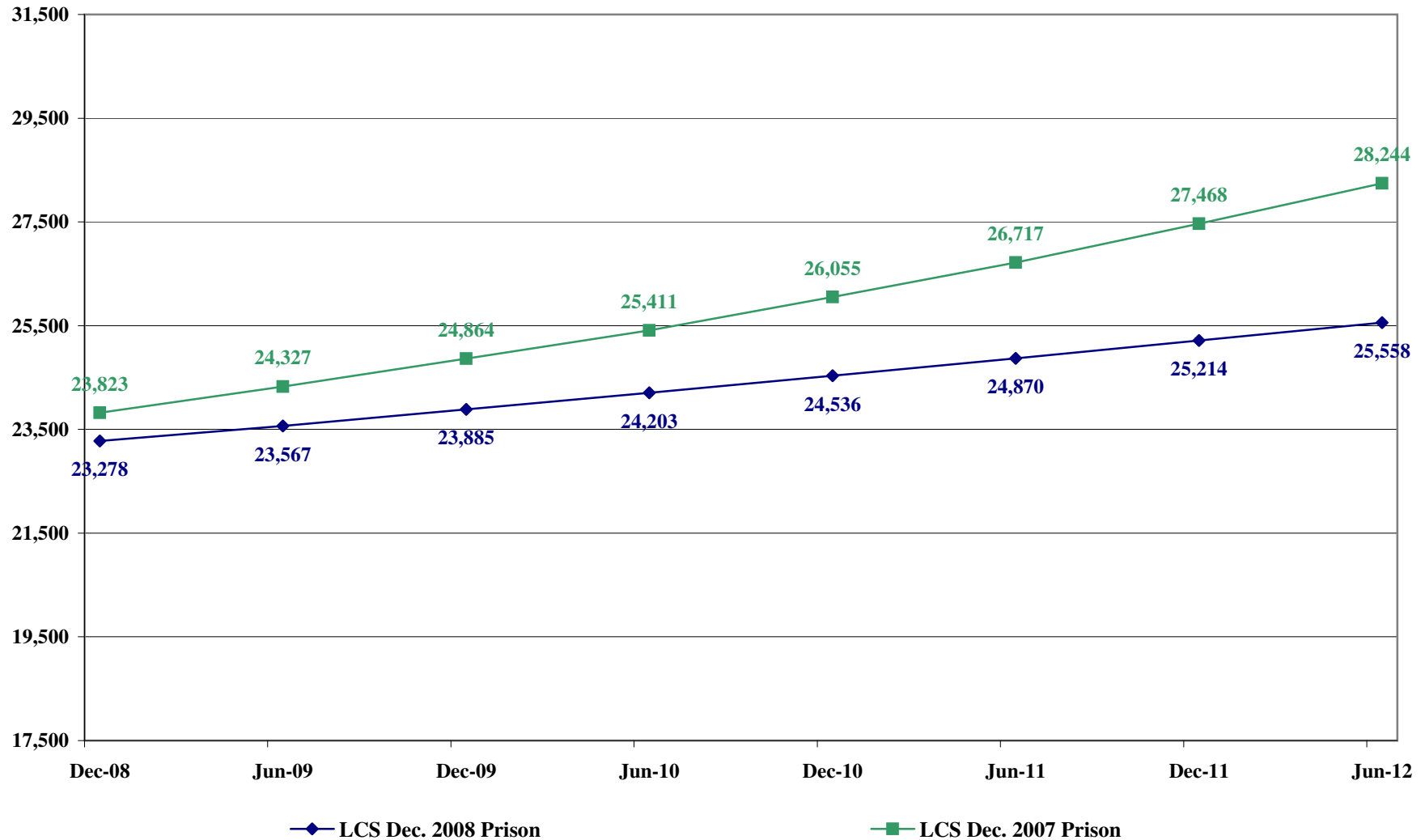
Division of Criminal Justice



# COLORADO DEPARTMENT OF CORRECTIONS

Comparison to Prior Year Prison Population Projections

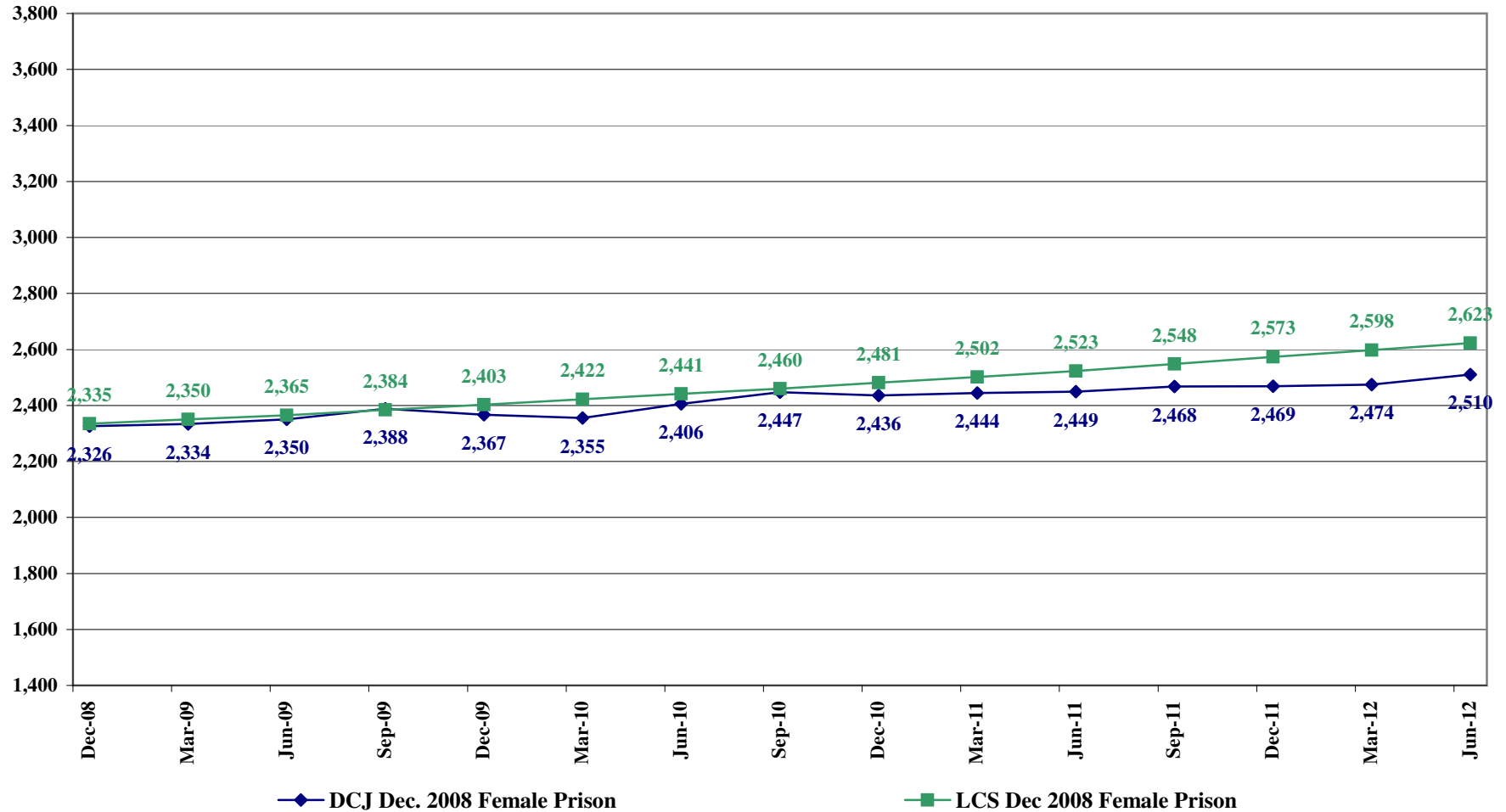
Legislative Council Staff



Source: Legislative Council Staff's Focus Colorado Economic and Revenue Forecast, 2007-2012 and 2008-12.

## COLORADO DEPARTMENT OF CORRECTIONS

Comparison of **Female** Prison Population Projections as issued by  
**Division of Criminal Justice<sup>(1)</sup>** and **Legislative Council Staff<sup>(2)</sup>**



<sup>(1)</sup>Source: Colorado Division of Criminal Justice December 2008 Prison Population Projections

<sup>(2)</sup>Source: Legislative Council Staff's Focus Colorado Economic and Revenue Forecast, 2008-2012.

## COLORADO DEPARTMENT OF CORRECTIONS

Comparison of 2008 Parole Population Projections

As Issued by **Division of Criminal Justice** <sup>(1)</sup>

and **Legislative Council Staff** <sup>(2)</sup>

DATE (EOM)	DCJ <sup>(1)</sup>				LCS <sup>(2)</sup>			DIFFERENCE IN PROJECTIONS <sup>(5)</sup>	
	Interstate				Interstate				
	Domestic <sup>(3)</sup>	Out	Absconders	Total	Domestic <sup>(3)</sup>	Out <sup>(4)</sup>	Total		
Jun-09	8,926	1,961	860	11,747	9,119	2,805	11,924	(177)	(2)
Jun-10	9,596	2,054	926	12,576	9,539	2,902	12,441	135	(1)
Jun-11	10,319	2,154	993	13,466	10,065	3,015	13,080	386	(1)
Jun-12	10,879	2,232	1,061	14,172	10,635	3,142	13,777	395	(1)

(1) Source: Colorado Division of Criminal Justice December 2008 Adult Parole Population Projections.

(2) Source: Legislative Council Staff's Focus Colorado: Economic and Revenue Forecast, 2008-2012

(3) Domestic includes regular, ISP and interstate in parole.

(4) Legislative Council Staff combines Interstate out and Absconders.

(5) Agency Projecting the Higher Population.

# COLORADO DEPARTMENT OF CORRECTIONS

## Parole Population Projections

Comparison of **Division of Criminal Justice**<sup>(1)</sup> and **Legislative Council Staff**<sup>(2)</sup>

