

# STATE OF COLORADO

## COLORADO DEPARTMENT OF CORRECTIONS

2862 South Circle Drive  
Colorado Springs, CO 80906-4195  
Phone: (719) 579-9580  
Fax: (719) 226-4755  
Web: www.doc.state.co.us



Bill Ritter, Jr.  
Governor

Aristedes W. Zavaras  
Executive Director

## MEMORANDUM

TO: Executive Staff  
Assistant Directors, Wardens and Parole Managers

FROM: Kristi Rosten  
Senior Statistical Analyst  
Office of Planning and Analysis

DATE: January 9, 2008

RE: **December 2007 Prison Population Projections**

Attached are the December 2007 adult prison and parole population projections as completed and issued by the [Division of Criminal Justice \(D.C.J.\)](#) and [Legislative Council \(L.C.S.\)](#). The following charts are attached:

### Prison Population Projections

- Comparison of Prison Population Projections as issued by D.C.J. and L.C.S.-Table
- Comparison of Prison Population Projections as issued by D.C.J. and L.C.S.-Graph
- Comparison of D.C.J. Prison Population Projections – **December 2006 to December 2007 Issue**
- Comparison of L.C.S. Prison Population Projections – **December 2006 to December 2007 Issue**
- Comparison of **Female** Prison Population Projections as issued by D.C.J. and L.C.S.

### Parole Population Projections

- Comparison of Parole Population Projections as issued by D.C.J. and L.C.S.-Table
- Comparison of Parole Population Projections as issued by D.C.J. and L.C.S.-Graph

The domestic parole population includes regular, ISP and interstate-in caseloads. Interstate-in represents parolees supervised in Colorado from other states; whereas interstate-out of state counts reflect Colorado offenders being supervised in other states.

If you have any questions or need additional information regarding the projections, please contact our office.

## COLORADO DEPARTMENT OF CORRECTIONS

Comparison of 2007 Prison Population Projections

As Issued by **Division of Criminal Justice**<sup>(1)</sup>

and **Legislative Council Staff**<sup>(2)</sup>

DATE (EOM)	D.C.J. PROJECTIONS <sup>(1)</sup>			LEG.COUNCIL PROJECTIONS <sup>(2)</sup>			DIFFERENCE IN	
	Dec-07 Projection	Dec-06 Projection	Difference	Dec-07 Projection	Dec-06 Projection	Difference	Dec-07 PROJECTIONS <sup>(3)</sup>	
Dec-07	22,806	23,296	(490)	22,749	23,605	(856)	57	(1)
Mar-08	23,047	23,562	(515)	22,993	23,982	(989)	54	(1)
Jun-08	23,456	23,880	(424)	23,322	24,448	(1,126)	134	(1)
Sep-08	23,766	24,077	(311)	23,614	24,775	(1,161)	152	(1)
Dec-08	23,962	24,291	(329)	23,823	25,089	(1,266)	139	(1)
Mar-09	24,157	24,573	(416)	24,030	25,513	(1,483)	127	(1)
Jun-09	24,327	24,865	(538)	24,327	26,030	(1,703)	0	(-)
Sep-09	24,476	25,094	(618)	24,640	26,385	(1,745)	(164)	(2)
Dec-09	24,587	25,315	(728)	24,864	26,726	(1,862)	(277)	(2)
Mar-10	24,910	25,602	(692)	25,088	27,159	(2,071)	(178)	(2)
Jun-10	25,182	25,937	(755)	25,411	27,718	(2,307)	(229)	(2)
Sep-10	25,457	26,157	(700)	25,779	28,103	(2,324)	(322)	(2)
Dec-10	25,667	26,396	(729)	26,055	28,472	(2,417)	(388)	(2)
Mar-11	26,003	26,761	(758)	26,333	28,939	(2,606)	(330)	(2)
Jun-11	26,329	27,072	(743)	26,717	29,540	(2,823)	(388)	(2)
Sep-11	26,619			27,142			(523)	(2)
Dec-11	26,797			27,468			(671)	(2)
Mar-12	27,132			27,797			(665)	(2)
Jun-12	27,419			28,244			(825)	(2)

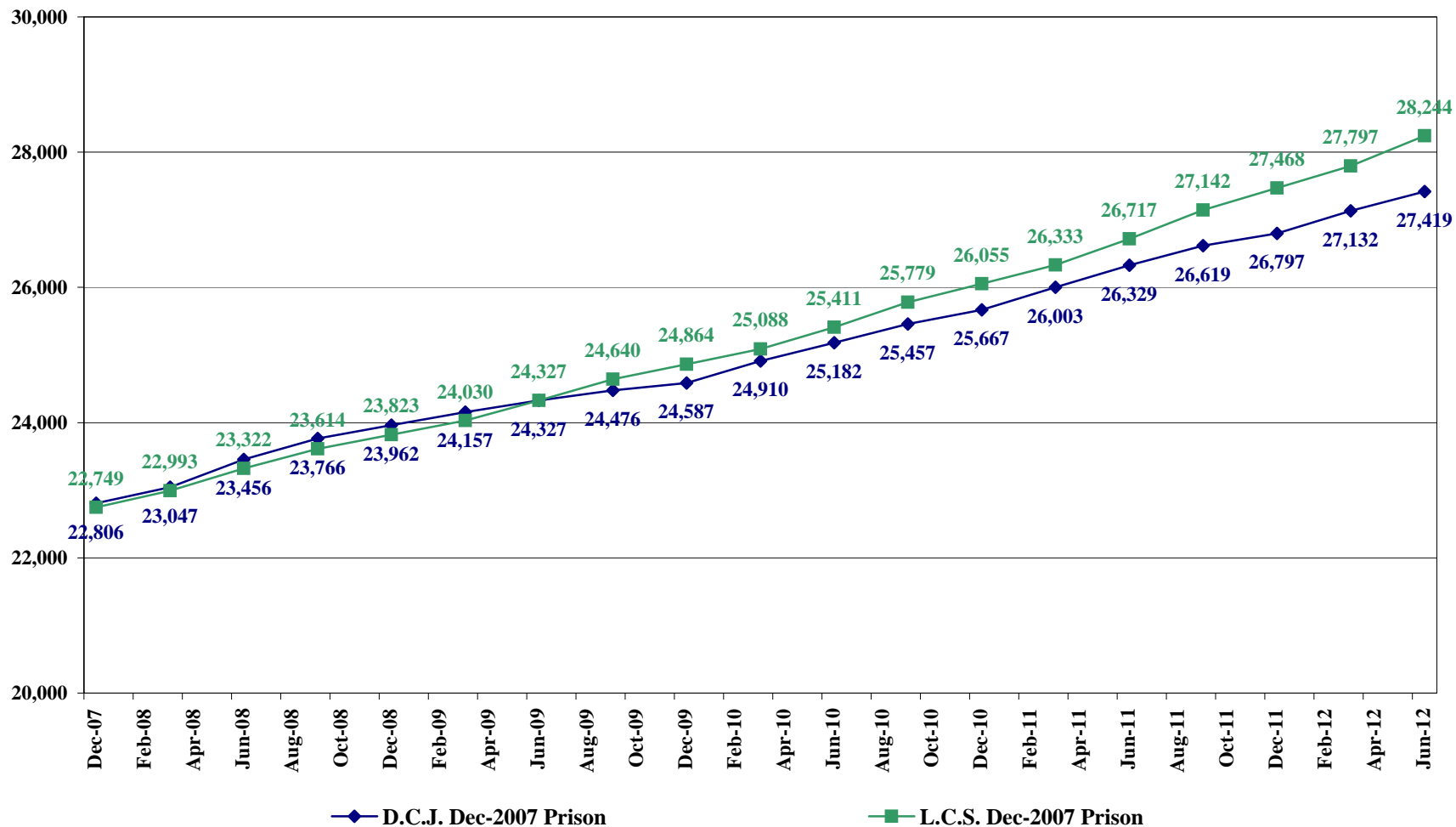
(1) Source : Colorado Division of Criminal Justice December 2007 Prison Projections

(2) Source: Legislative Council Staff's Focus Colorado: Economic and Revenue Forecast, 2007-2012

(3) Agency Projecting the Higher Population.

## COLORADO DEPARTMENT OF CORRECTIONS

Comparison of Prison Population Projections as Issued by  
**Division of Criminal Justice<sup>(1)</sup> and Legislative Council Staff<sup>(2)</sup>**



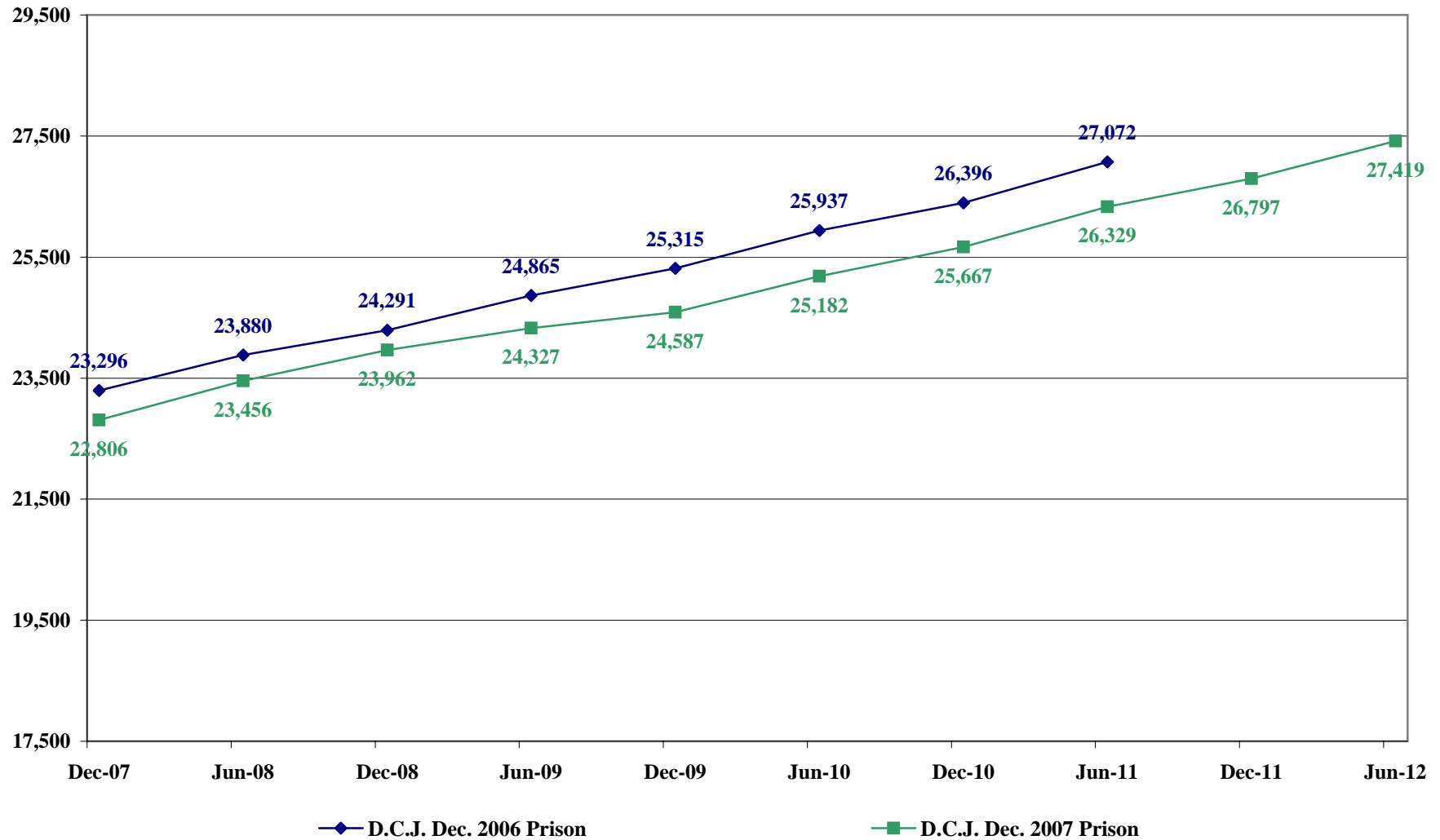
(1) Source: Colorado Division of Criminal Justice December 2007 Prison Projections

(2) Source: Legislative Council Staff's Focus Colorado Economic and Revenue Forecast, 2007-2012.

# COLORADO DEPARTMENT OF CORRECTIONS

Comparison to Prior Year Prison Population Projections

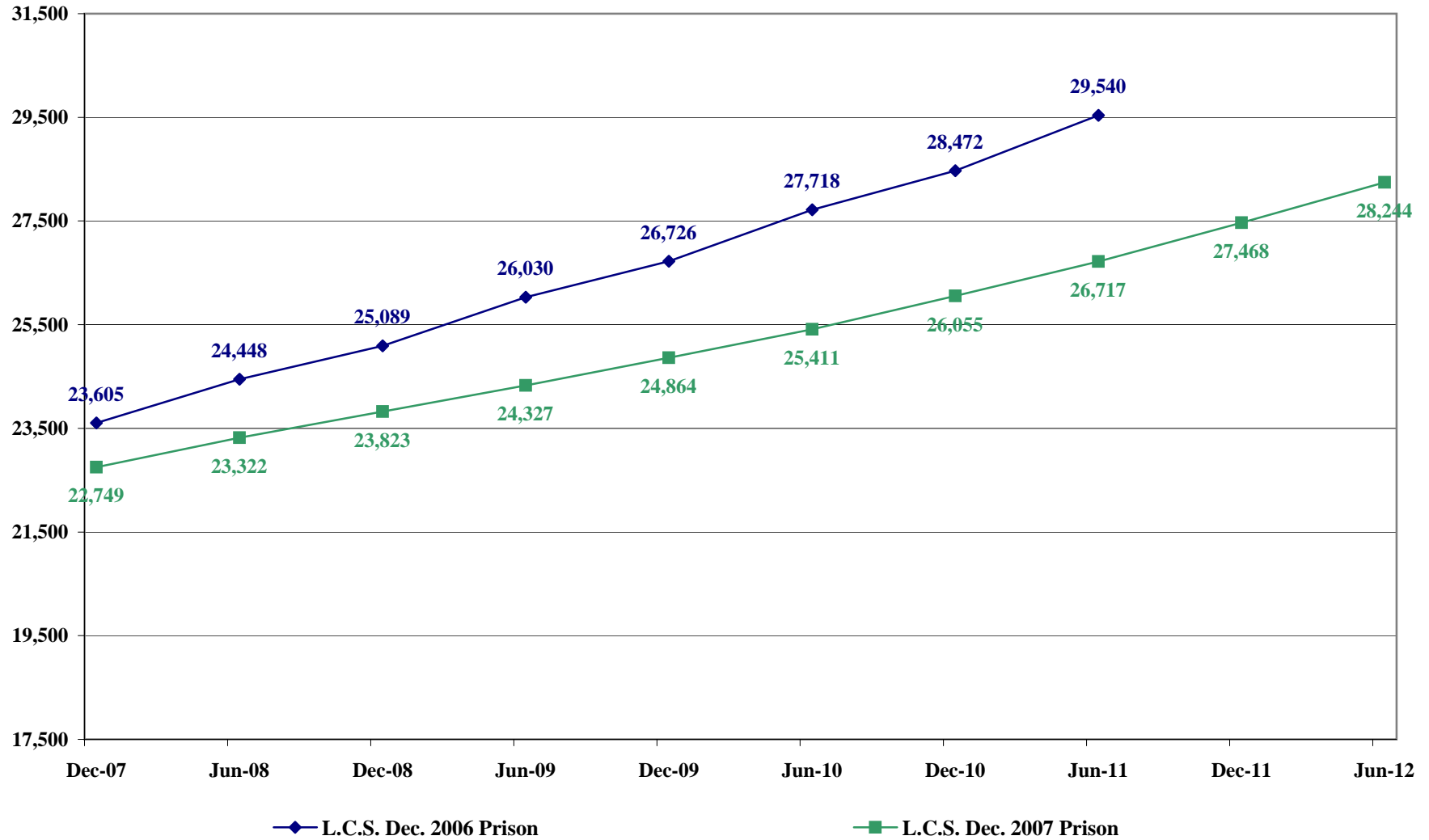
Division of Criminal Justice



# COLORADO DEPARTMENT OF CORRECTIONS

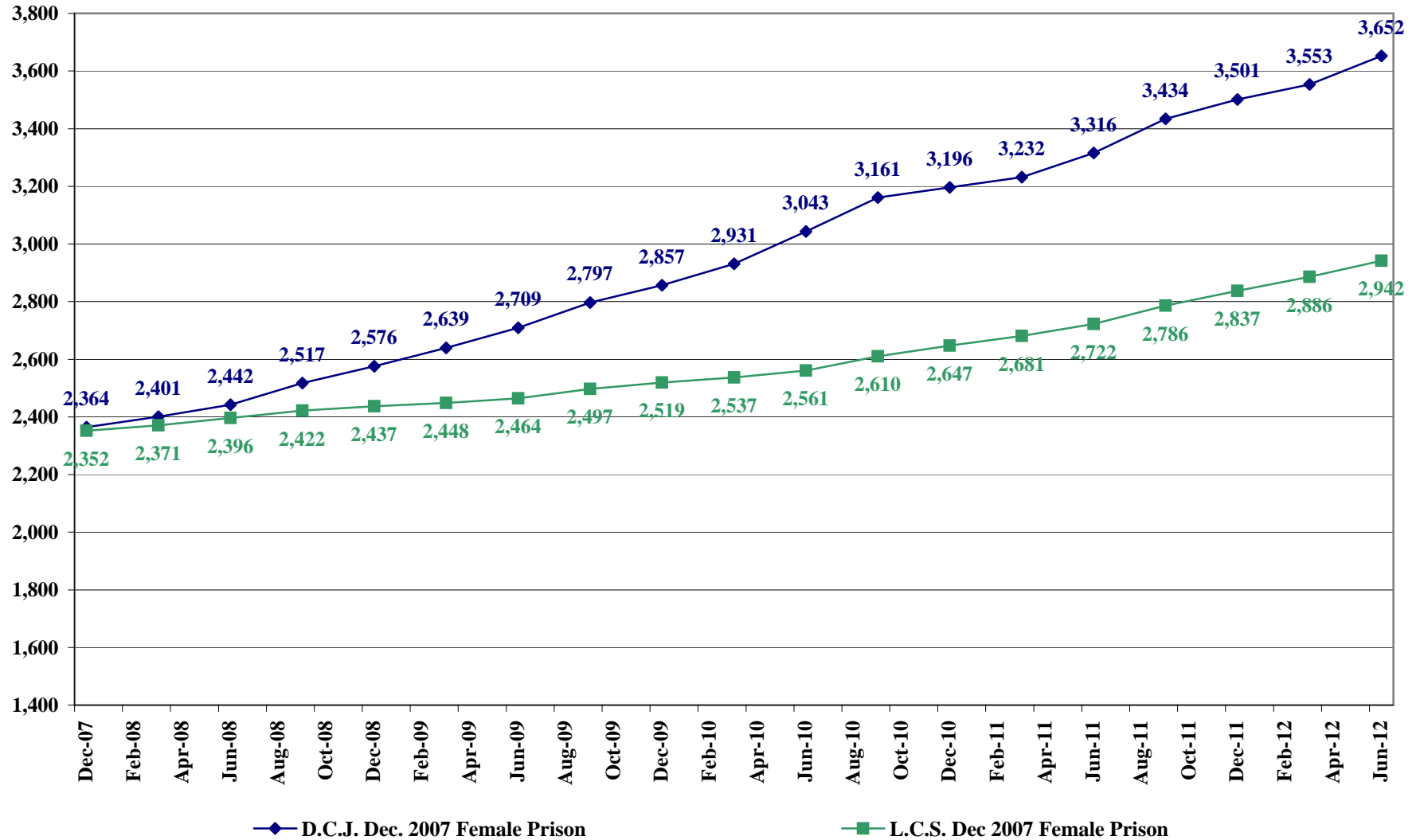
Comparison to Prior Year Prison Population Projections

Legislative Council Staff



## COLORADO DEPARTMENT OF CORRECTIONS

Comparison of **Female** Prison Population Projections as issued by  
**Division of Criminal Justice<sup>(1)</sup>** and **Legislative Council Staff<sup>(2)</sup>**



<sup>(1)</sup>Source: Colorado Division of Criminal Justice December 2007 Prison Population Projections

<sup>(2)</sup>Source: Legislative Council Staff's Focus Colorado Economic and Revenue Forecast, 2007-2012.

## COLORADO DEPARTMENT OF CORRECTIONS

Comparison of 2007 Parole Population Projections

As Issued by **Division of Criminal Justice** <sup>(1)</sup>

and **Legislative Council Staff** <sup>(2)</sup>

DIVISION OF CRIMINAL JUSTICE <sup>(1)</sup>					LEGISLATIVE COUNCIL <sup>(2)</sup>			DIFFERENCE IN PROJECTIONS <sup>(5)</sup>	
DATE (EOM)	Interstate				Interstate				
	Domestic <sup>(3)</sup>	Out	Absconders	Total	Domestic <sup>(3)</sup>	Out <sup>(4)</sup>	Total		
Jun-08	8,712	1,919	831	11,462	8,871	2,877	11,748	(286)	(2)
Jun-09	9,495	2,025	913	12,433	9,765	3,127	12,892	(459)	(2)
Jun-10	10,152	2,114	998	13,264	11,045	3,383	14,428	(1,164)	(2)
Jun-11	10,448	2,154	1,087	13,689	11,905	3,599	15,504	(1,815)	(2)
Jun-12	10,959	2,224	1,179	14,362	12,844	3,832	16,676	(2,314)	(2)

(1) Source: Colorado Division of Criminal Justice December 2007 Adult Parole Population Projections.

(2) Source: Legislative Council Staff's Focus Colorado: Economic and Revenue Forecast, 2007-2012

(3) Domestic includes regular, ISP and interstate in parole.

(4) Legislative Council Staff combines Interstate out and Absconders.

(5) Agency Projecting the Higher Population.

# COLORADO DEPARTMENT OF CORRECTIONS

## Parole Population Projections

Comparison of **Division of Criminal Justice**<sup>(1)</sup> and **Legislative Council Staff**<sup>(2)</sup>

