

STATE OF COLORADO

COLORADO DEPARTMENT OF CORRECTIONS

2862 South Circle Drive
Colorado Springs, CO 80906-4195
Phone: (719) 579-9580
Fax: (719) 226-4755
Web: www.doc.state.co.us



Bill Owens
Governor

Joe Ortiz
Executive Director

MEMORANDUM

TO: Executive Staff
Assistant Directors, Wardens and Parole Managers

FROM: Kristi Rosten
Senior Statistical Analyst
Office of Planning and Analysis

DATE: January 9, 2007

RE: **December 2006 Prison Population Projections**

Attached are the December 2006 adult prison and parole population projections as completed and issued by the Division of Criminal Justice (D.C.J.) and Legislative Council (L.C.S.). The following charts are attached:

Prison Population Projections

- Comparison of Prison Population Projections as issued by D.C.J. and L.C.S.-Table
- Comparison of Prison Population Projections as issued by D.C.J. and L.C.S.-Graph
- Comparison of D.C.J. Prison Population Projections – **December 2006 to December 2005 Issue**
- Comparison of L.C.S. Prison Population Projections – **December 2006 to December 2005 Issue**
- Comparison of **Female** Prison Population Projections as issued by D.C.J. and L.C.S.

Parole Population Projections

- Comparison of Parole Population Projections as issued by D.C.J. and L.C.S.-Table
- Comparison of Parole Population Projections as issued by D.C.J. and L.C.S.-Graph

The domestic parole population includes regular, ISP and interstate-in caseloads. Interstate-in represents parolees supervised in Colorado from other states; whereas interstate-out of state counts reflect Colorado offenders being supervised in other states.

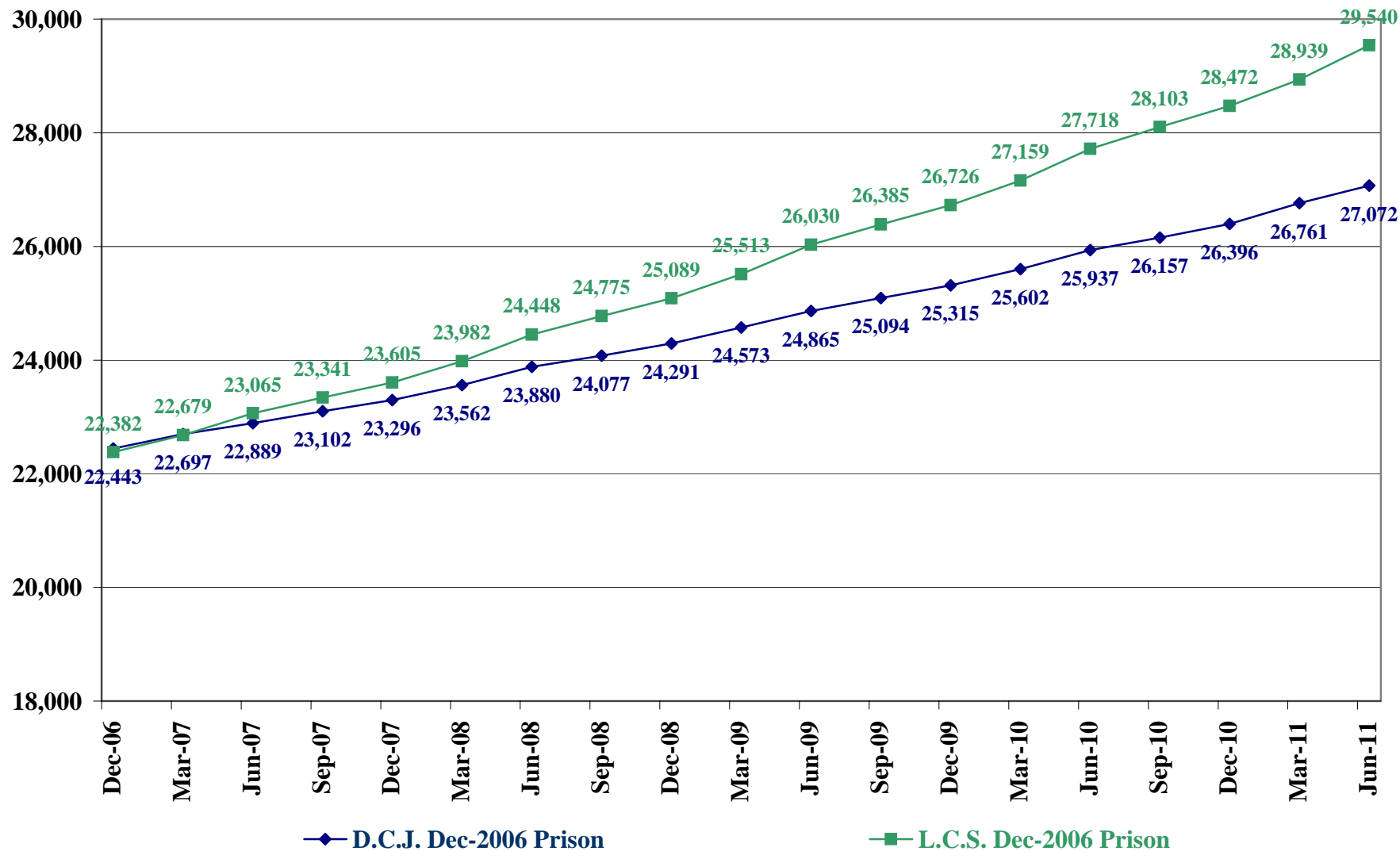
Should you have any questions or need additional information regarding the projections please contact our office.

COLORADO DEPARTMENT OF CORRECTIONS
COMPARISON OF PRISON POPULATION PROJECTIONS
AS ISSUED BY DIVISION OF CRIMINAL JUSTICE (1)
AND LEGISLATIVE COUNCIL (2)

DATE (EOM)	D.C.J. PROJECTIONS(1)			LEG.COUNCIL PROJECTIONS(2)			DIFFERENCE IN	
	Dec-06 Projection	Dec-05 Projection	Difference	Dec-06 Projection	Dec-05 Projection	Difference	Dec-05	PROJECTIONS(3)
Dec-06	22,443	22,221	222	22,382	22,624	(242)	61	(1)
Mar-07	22,697	22,506	191	22,679	22,766	(87)	18	(1)
Jun-07	22,889	22,827	62	23,065	23,159	(94)	(176)	(2)
Sep-07	23,102	23,058	44	23,341	23,616	(275)	(239)	(2)
Dec-07	23,296	23,376	(80)	23,605	23,927	(322)	(309)	(2)
Mar-08	23,562	23,652	(90)	23,982	24,095	(113)	(420)	(2)
Jun-08	23,880	24,000	(120)	24,448	24,529	(81)	(568)	(2)
Sep-08	24,077	24,201	(124)	24,775	25,021	(246)	(698)	(2)
Dec-08	24,291	24,454	(163)	25,089	25,357	(268)	(798)	(2)
Mar-09	24,573	24,731	(158)	25,513	25,545	(32)	(940)	(2)
Jun-09	24,865	25,029	(164)	26,030	26,014	16	(1,165)	(2)
Sep-09	25,094	25,283	(189)	26,385	26,536	(151)	(1,291)	(2)
Dec-09	25,315	25,579	(264)	26,726	26,894	(168)	(1,411)	(2)
Mar-10	25,602	25,896	(294)	27,159	27,093	66	(1,557)	(2)
Jun-10	25,937	26,218	(281)	27,718	27,592	126	(1,781)	(2)
Sep-10	26,157			28,103		28,103	(1,946)	(2)
Dec-10	26,396			28,472		28,472	(2,076)	(2)
Mar-11	26,761			28,939		28,939	(2,178)	(2)
Jun-11	27,072			29,540		29,540	(2,468)	(2)

- (1) SOURCE : COLORADO DIVISION OF CRIMINAL JUSTICE DECEMBER 2006 PRISON PROJECTIONS
(2) SOURCE: LEGISLATIVE COUNCIL STAFF DECEMBER 2006 PRISON POPULATION PROJECTIONS
(3) AGENCY PROJECTING THE HIGHER POPULATION

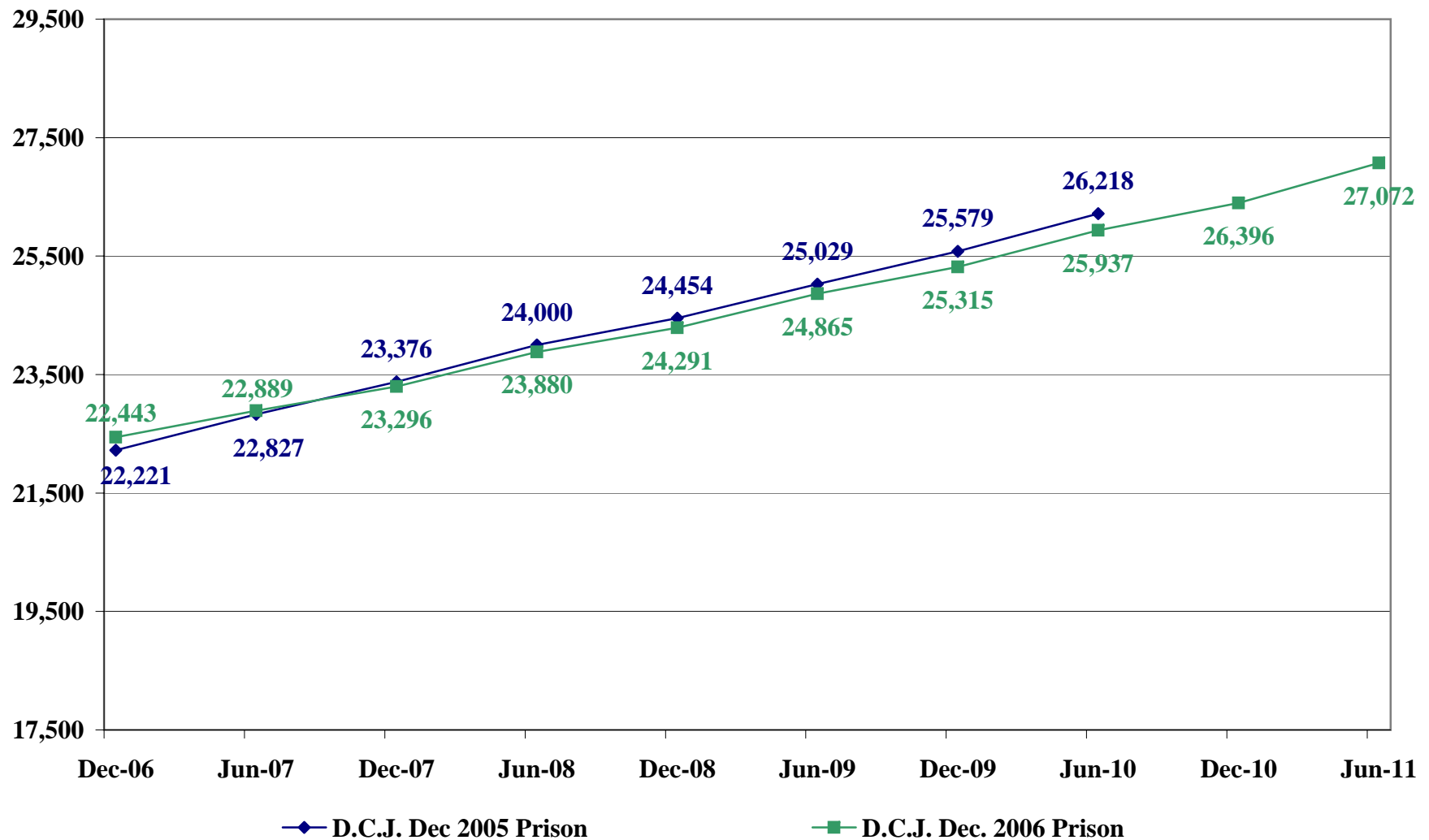
**COLORADO DEPARTMENT OF CORRECTIONS
COMPARISON OF PRISON POPULATION PROJECTIONS AS ISSUED BY
DIVISION OF CRIMINAL JUSTICE (1) AND LEGISLATIVE COUNCIL (2)**



(1)Source: Colorado Division of Criminal Justice December 2006 Prison Projections.

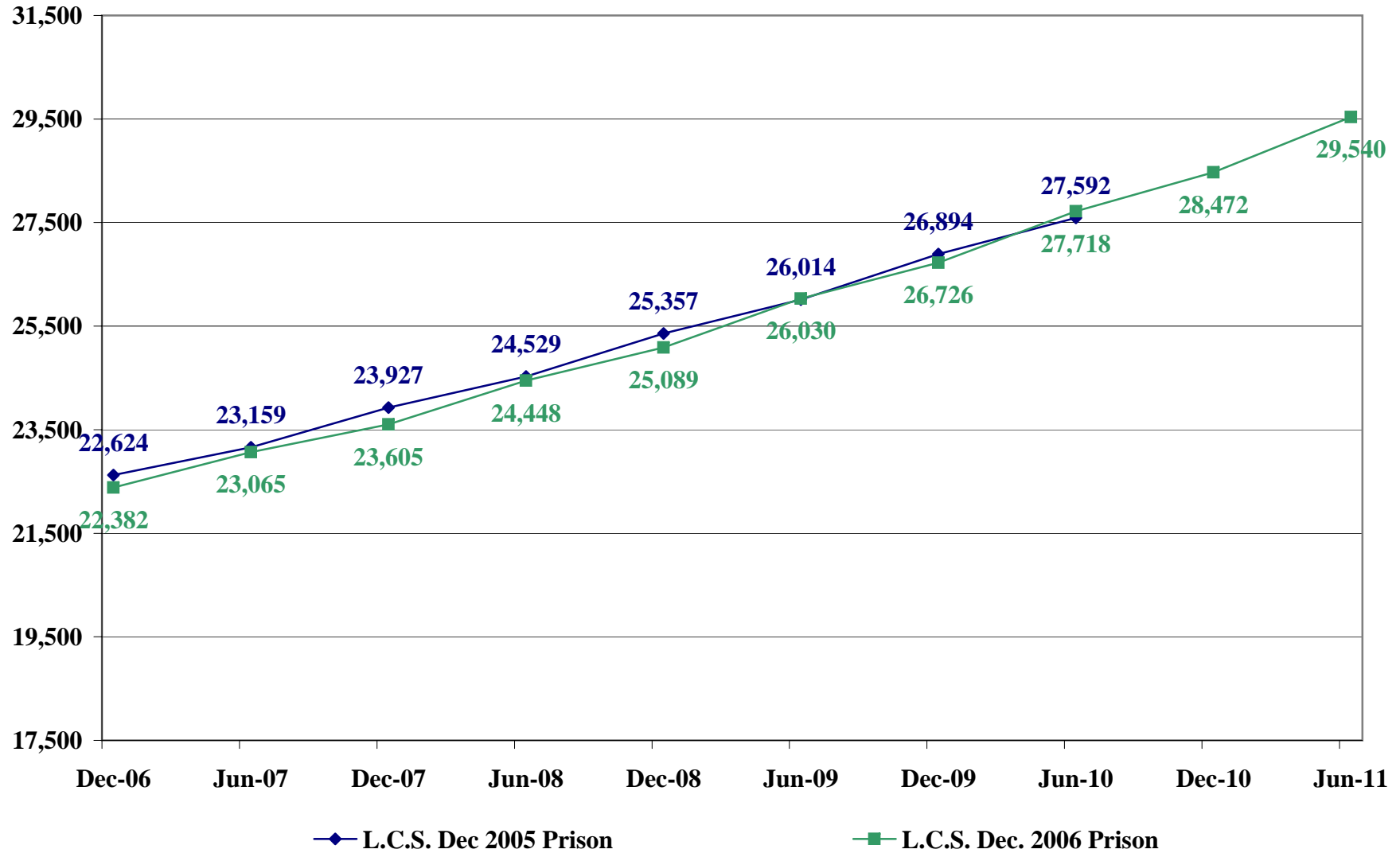
(2)Source: Legislative Council Staff December 2006 Prison Population Projections.

**COLORADO DEPARTMENT OF CORRECTIONS
DIVISION OF CRIMINAL JUSTICE PRISON POPULATION PROJECTIONS**



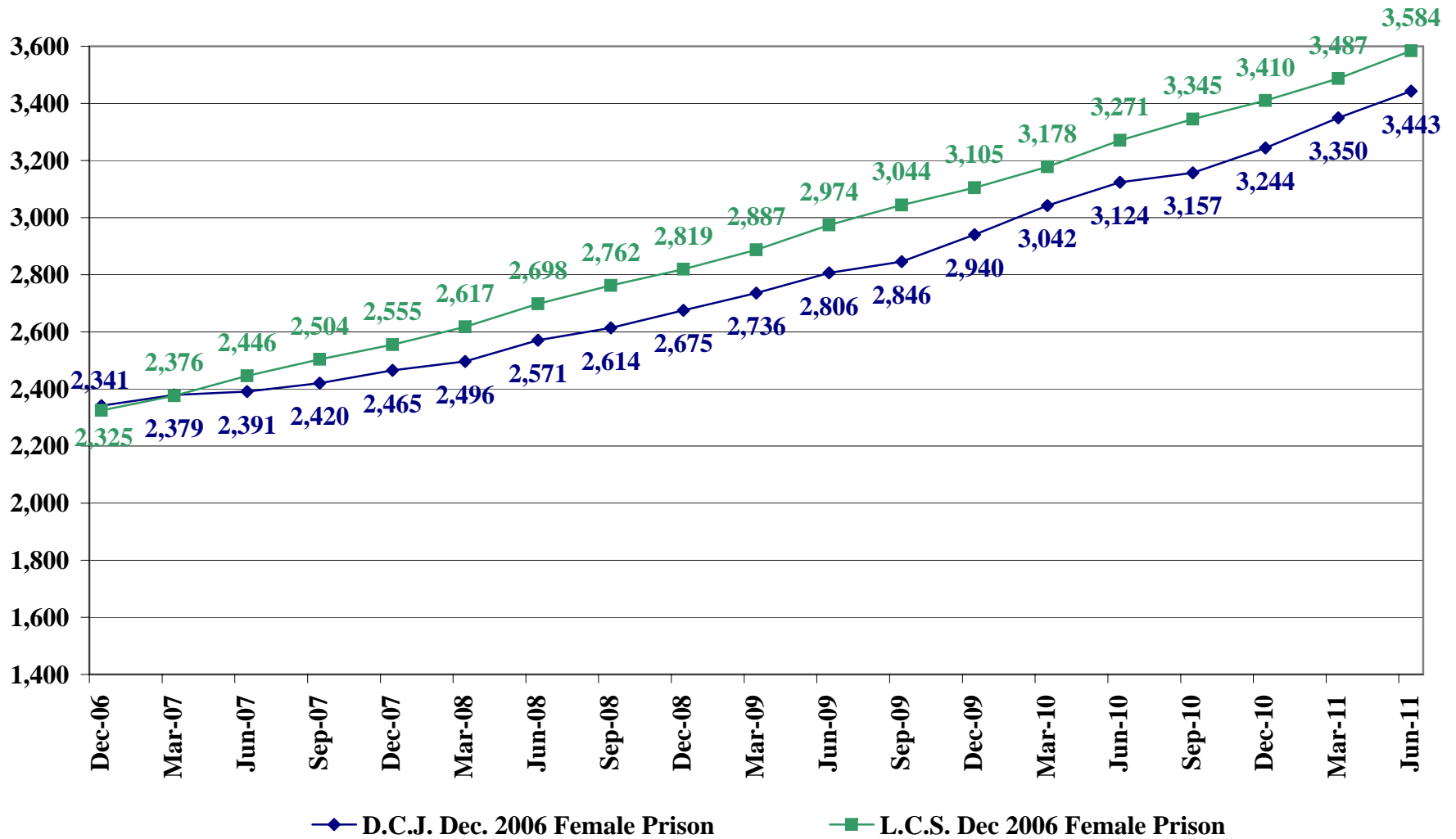
Source: Colorado Division of Criminal Justice December 2005 and December 2006 Prison Projections

**COLORADO DEPARTMENT OF CORRECTIONS
LEGISLATIVE COUNCIL PRISON POPULATION PROJECTIONS**



Source: Legislative Council Staff December 2005 and December 2006 Prison Population Projections

COLORADO DEPARTMENT OF CORRECTIONS
Comparison of Female Prison Population Projections as issued by
Division of Criminal Justice (1) and Legislative Council (2)



(1)Source: Colorado Division of Criminal Justice December 2006 Prison Projections.

(2)Source: Legislative Council Staff December 2006 Prison Population Projections

COLORADO DEPARTMENT OF CORRECTIONS

COMPARISON OF 2006 PAROLE POPULATION PROJECTIONS

AS ISSUED BY DIVISION OF CRIMINAL JUSTICE (1)

AND LEGISLATIVE COUNCIL (2)

DIVISION OF CRIMINAL JUSTICE (1)					LEGISLATIVE COUNCIL (2)			DIFFERENCE IN INTERIM PROJECTIONS ⁽⁵⁾	
DATE (EOM)	Domestic ⁽³⁾	Interstate Out	Absconders	Total	Domestic ⁽³⁾	Interstate Out ⁽⁴⁾	Total		
Jun-07	7,467	1,830	702	9,999	7,527	2,511	10,038	(39)	(2)
Jun-08	7,842	1,882	753	10,477	8,501	2,745	11,246	(769)	(2)
Jun-09	8,419	1,979	803	11,201	9,455	2,954	12,409	(1,208)	(2)
Jun-10	8,955	2,082	852	11,889	10,349	3,149	13,498	(1,609)	(2)
Jun-11	9,466	2,196	900	12,562	11,229	3,328	14,557	(1,995)	(2)
Jun-12	10,059	2,325	946	13,330	12,161	3,512	15,673	(2,343)	(2)

(1) Source: Colorado Division of Criminal Justice December 2006 Adult Parole Population Projections.

(2) Source: Legislative Council Staff's December 2006 Parole Population Projections.

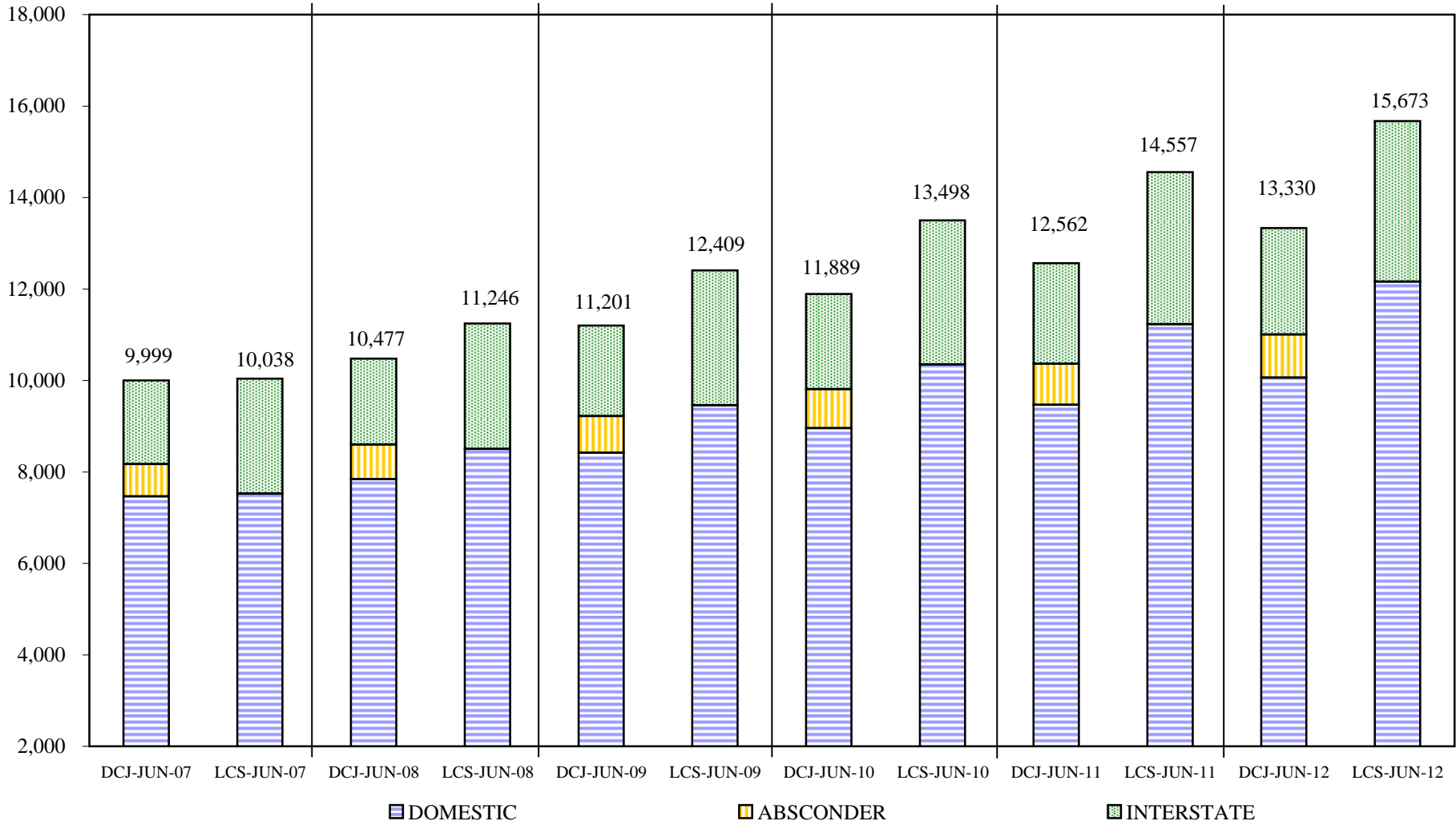
(3) Domestic includes regular, ISP and interstate in parole.

(4) Legislative Council Staff combines Interstate out and Absconders.

(5) Agency Projecting the Higher Population.

**COLORADO DEPARTMENT OF CORRECTIONS
PAROLE POPULATION PROJECTIONS**

COMPARISON OF DIVISION OF CRIMINAL JUSTICE (DCJ) AND LEGISLATIVE COUNCIL STAFF * (LCS)



*Legislative Council Staff combines Interstate out and Absconders