

Colorado Department of Corrections



Bill Owens
Governor

YOUTHFUL OFFENDER SYSTEM FISCAL YEAR 2001

For more information contact:
Office of Planning & Analysis
Office (719) 226-4374
E-mail address: kristi.rosten@doc.state.co.us



Joe Ortiz
Executive Director

BULLETIN OPA 02-4

Statistical Bulletin

MARCH 20, 2002

Office of Planning and Analysis

The Office of Planning and Analysis exists within the Department of Corrections to provide research, information and data analysis services. The office also monitors population projections, analyzes legislative impact studies, oversees the administrative regulations, and conducts program and system evaluations as directed by statute or executive priority.

General Statistics, Reporting and Evaluation Unit

The General Statistics, Reporting and Evaluation Unit within the Office of Planning and Analysis analyzes data, evaluates programs and conducts research for internal management and external criminal justice use. This unit gathers, compiles and analyzes data for a multitude of agencies and purposes.

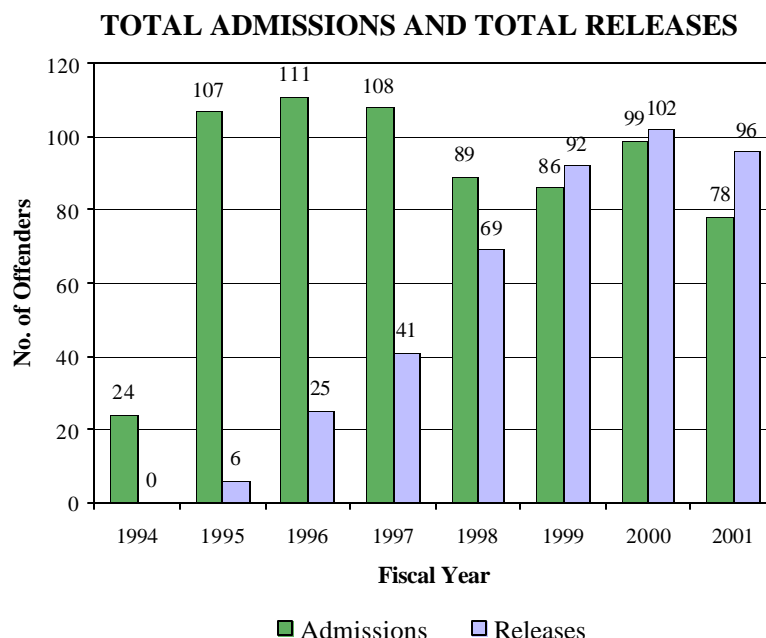
About this Bulletin

This publication is intended to provide an overview of statistical information and findings generated by this unit. Dissemination of this information to staff and other interested individuals will be provided through this periodical publication. Publications are also available on the Internet at: <http://www.doc.state.co.us/Statistics.statistics.htm>.

~ PROGRAM OVERVIEW ~

The Youthful Offender System (Y.O.S.), established through legislation passed in 1993, is a program designed for certain violent youthful offenders, operating under the jurisdiction of the Department of Corrections but separate from the adult prison system. Offenders receive a Y.O.S. sentence ranging from two to seven years, in addition to a suspended adult prison sentence. Discharge of the offender's sentence is contingent upon successful completion of the Y.O.S. program. If the program is not completed, the adult sentence is reinstated and the offender is admitted to prison as an adult. The Y.O.S. program consists of four phases as defined in statute, which are summarized below.

- ◆ **IDO** (Intake, Diagnostic and Orientation): Orientation to the expectations and phases of the program. Lasts approximately four weeks and includes participation in a modified military-type boot camp.
- ◆ **PHASE I:** A range of core programs and services, supplemental activities, and educational and vocational programs are provided.



- ◆ **PHASE II:** Administered during the last three months of confinement during which the offender participates in programs and services that help prepare for community reintegration.
- ◆ **PHASE III:** Period of community supervision during which the offender is monitored and reintegrated into society.

~ ADMISSIONS ~

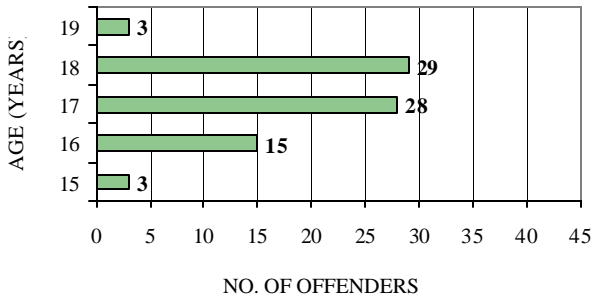
FY 2001 Admission Highlights

- ◆ Admissions to the Youthful Offender System totaled 78 offenders: 76 males and 2 females.
- ◆ The most serious crime of aggravated robbery comprised 32.1% of the total FY 2001 admissions.
- ◆ Over 51% of admissions were convicted of a class III felony.
- ◆ Nearly 36% of admissions were Hispanic.

COUNTY OF COMMITMENT

COUNTY	NO. OF ADMISSIONS	% OF TOTAL
El Paso	15	19.2%
Jefferson	11	14.1%
Denver	10	12.8%
Arapahoe	8	10.3%
Adams	7	9.0%
Boulder	6	7.7%
Mesa	4	5.1%
Other	17	21.8%

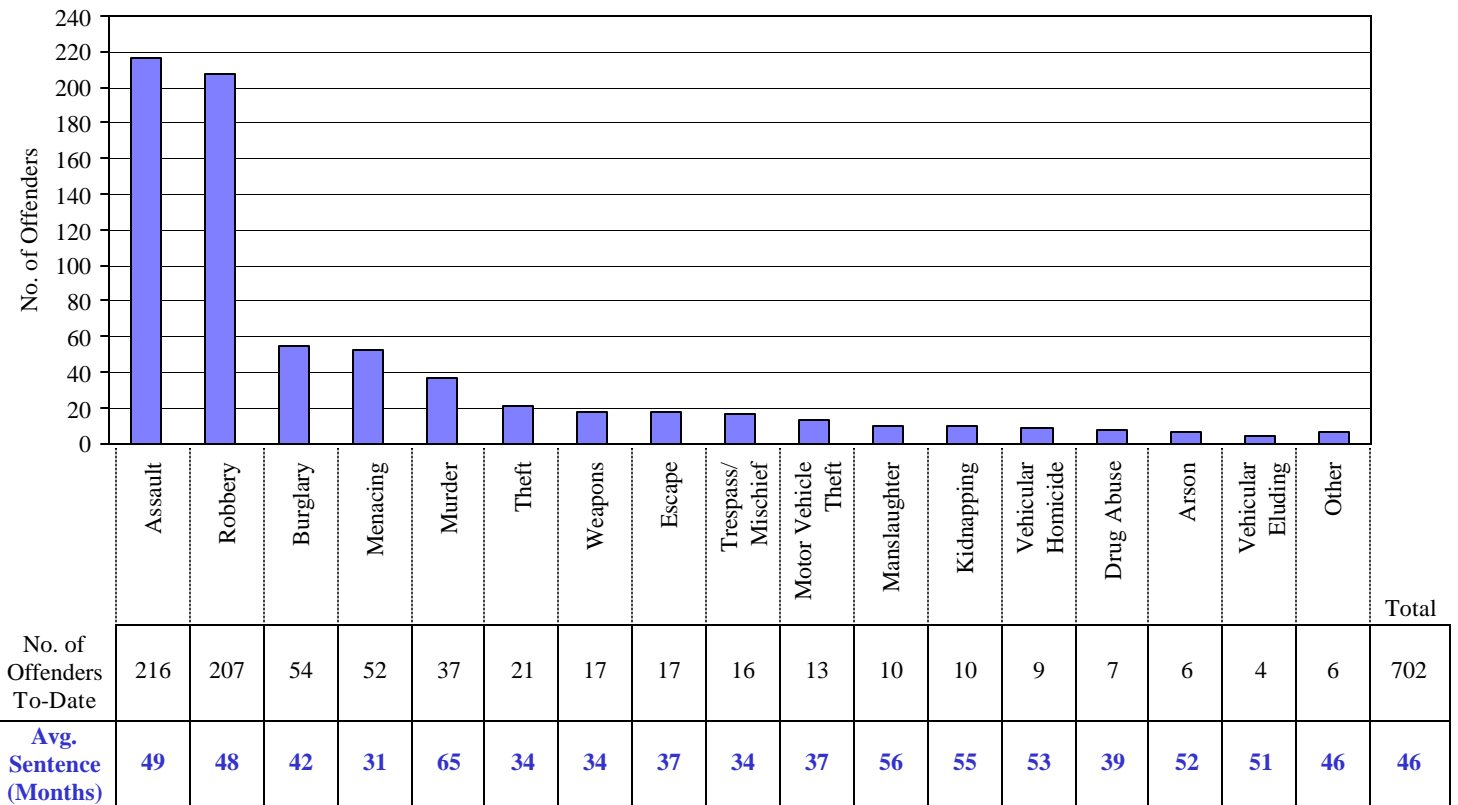
ADMISSIONS BY AGE GROUP



TOTAL ADMISSIONS – FY 1994 through FY 2001

Admissions to-date to the Youthful Offender System totaled 702 offenders: 679 males and 23 females.

MOST SERIOUS CRIME* WITH SENTENCE



* Includes attempt, conspiracy, solicitation or accessory to the offense.

~ RELEASES ~

Release Types

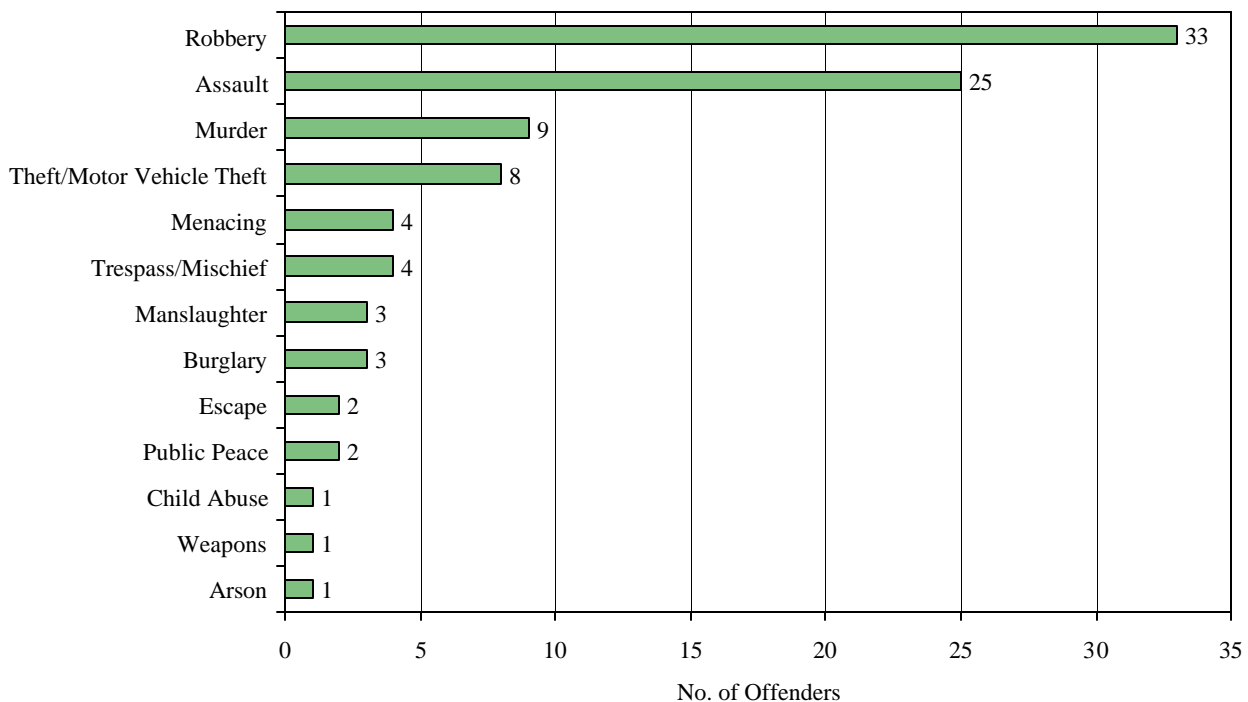
The types of releases from Y.O.S. to-date include:

- ◆ **Sentence Discharge** – Entire Y.O.S. sentence completed.
- ◆ **Termination/Revocation** – Removed from program for noncompliance, violent behavior or failure to progress.
- ◆ **Judicial Reconsideration** – Removed by court through a court-ordered discharge, release to appeal bond or probation or transfer to adult prison.
- ◆ **Deceased** – Includes any type of death.

FY 2001 Release Highlights

- ◆ Releases from the Youthful Offender System totaled 96 offenders: 90 males and 6 females.
- ◆ Offenders sentenced as class IV felons accounted for the largest group of releases at 45.8%.
- ◆ 30 offenders were 20 years of age upon release.
- ◆ Sentence discharges accounted for 82% of FY 2001 releases, while termination/ revocation represented 13%.

MOST SERIOUS CRIME* Fiscal Year 2001 Releases



* Crime categories include attempt, conspiracy, solicitation or accessory to the offense.

TOTAL RELEASES THROUGH FISCAL YEAR 2001

RELEASE TYPES	FY 1995	FY 1996	FY 1997	FY 1998	FY 1999	FY 2000	FY 2001	Total	% of Total
Sentence Discharge *	0	7	19	48	66	77	79	296	68.7%
Termination/Revocation	4	12	17	18	24	21	12	108	25.0%
Judicial Reconsideration	2	6	5	3	0	3	5	24	5.6%
Deceased	0	0	0	0	2	1	0	3	0.7%
Totals	6	25	41	69	92	102	96	431	100.0%

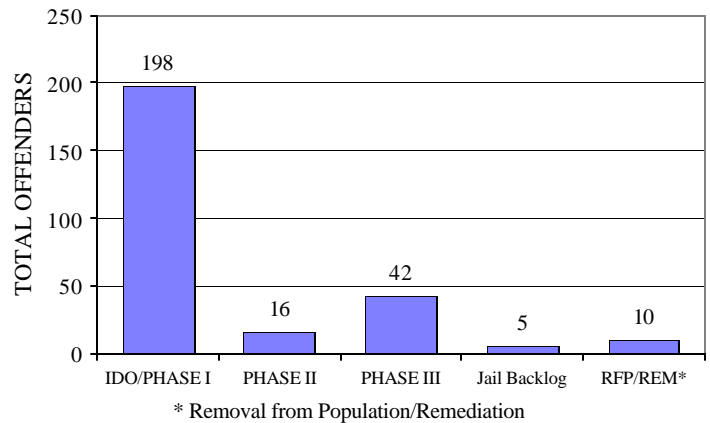
* 19 offenders were in the process of revocation at the time of discharge.

~ POPULATION ON JUNE 30, 2001 ~

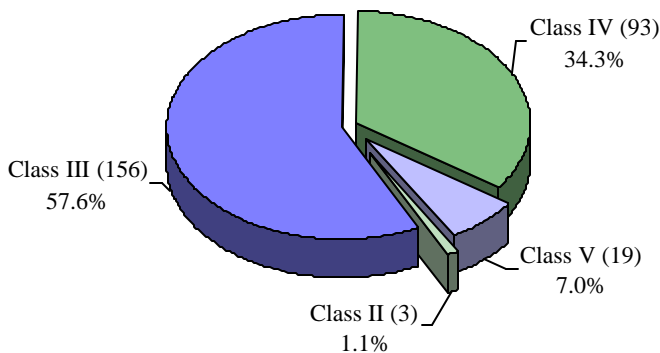
Population Highlights

- ◆ The population consists of 271 offenders: 263 males and 8 females.
- ◆ Almost 75% of the population are in IDO or phase I at the prison facility.
- ◆ Over 55% of offenders are in Y.O.S. for a class III felony.
- ◆ Among the current population, El Paso County has sentenced 59 of the 271 offenders, representing the highest number of sentences by county.
- ◆ Over 50% of offenders are currently either 18 or 19 years of age.
- ◆ Hispanic offenders constitute 43.2% of the current population.

POPULATION BY PROGRAM PHASE



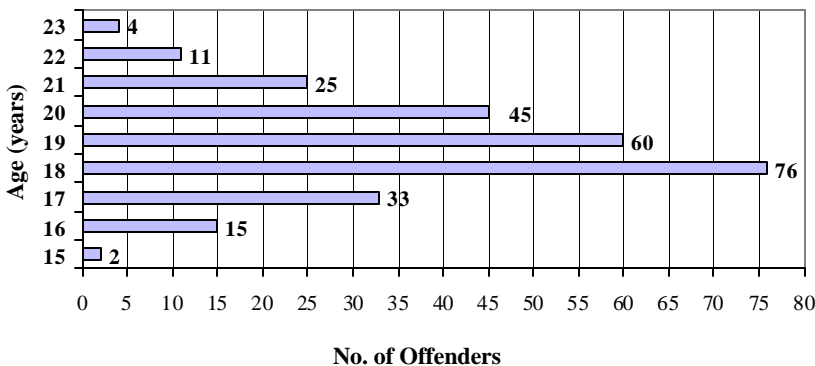
POPULATION BY FELONY CLASS



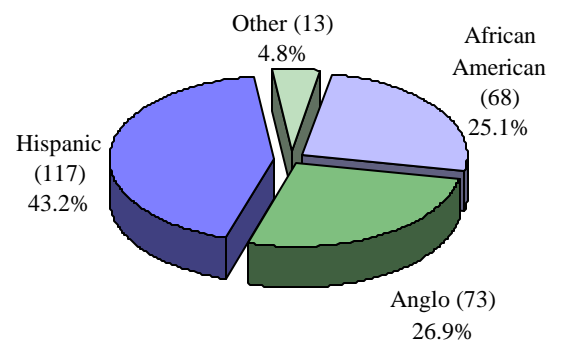
COUNTY OF COMMITMENT

COUNTY	NO. OF OFFENDERS	% OF TOTAL
El Paso	59	21.8%
Denver	47	17.3%
Arapahoe	31	11.4%
Jefferson	30	11.1%
Adams	27	10.0%
Weld	13	4.8%
Mesa	11	4.1%
Pueblo	10	3.7%
Larimer	10	3.7%
Other	33	12.2%

AGE DISTRIBUTION



POPULATION BY ETHNICITY



~ RECIDIVISM AND REOFFENSE ~

Recidivism: The Department of Corrections defines recidivism by administrative regulation as the return to prison in Colorado for either criminal activity or technical violations of parole, probation or non-departmental community placement within three years of release. Recidivism is calculated using those offenders who were discharged at least three years ago, per the definition above. This includes offenders discharged through FY 1998. Four offenders were in the process of revocation at time of discharge and were resented to adult prison for program violations and are therefore excluded from the analysis.

RECIDIVISM RATES FOR Y.O.S. DISCHARGES

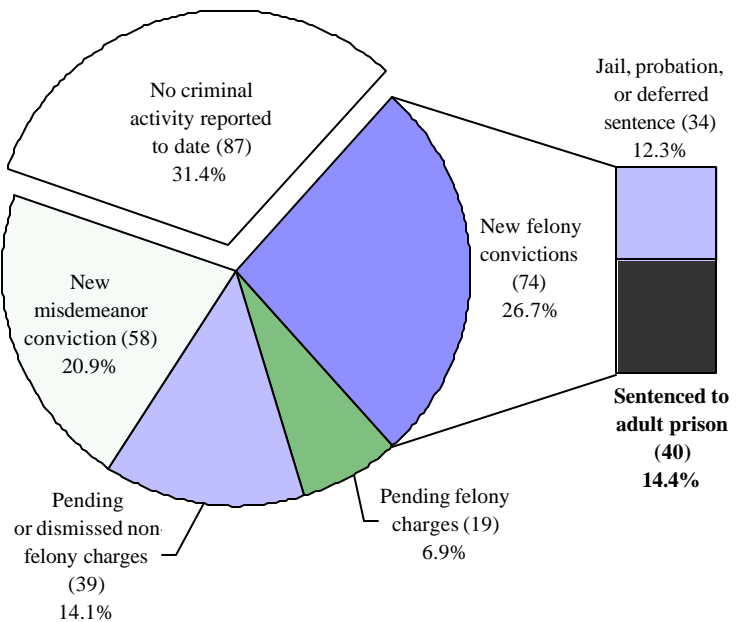
Return to D.O.C. Within 3 Years

Release Year (FY)	No. of Discharges*	No. of Returns**	Percent Returned
1996	7	1	14.3%
1997	17	2	11.8%
1998	46	10	21.7%
TOTAL	70	13	18.6%

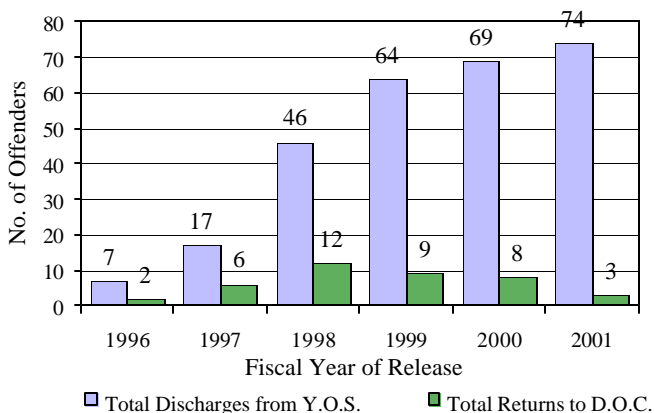
* Excludes 4 offenders in process of revocation at time of discharge.
 ** Excludes offenders returned to D.O.C. after three years.

Rearrest and Reoffense: Extensive research was conducted to further study the discharged offenders' criminal conduct after release. 296 offenders have discharged through June 30, 2001; however, 19 of these offenders were in the process of revocation at time of discharge and were resented to adult prison for program violations. They are therefore excluded from this analysis. The criminal contacts and activities for the remaining 277 offenders were tracked through December 31, 2001, and are summarized in the graph to the right.

Criminal Activity of Discharged Offenders Status as of December 31, 2001



Cumulative Return Rates to D.O.C. for Y.O.S. Discharges as of December 31, 2001



Cumulative Return Rate: Recidivism is reported for a three year follow up by definition; however rearrest and reoffense research includes criminal activity to date, a longer period of time for those offenders who have been out for more than three years. This graph displays the number of offenders returned to prison through December 31, 2001 compared to the number discharged by fiscal year of release.