

**COLORADO DEPARTMENT OF CORRECTIONS
MONTHLY POPULATION AND CAPACITY REPORT
as of March 31, 2012**

3-Apr-12

	3/31/12 OPERATIONAL CAPACITY ⁽¹⁾	----- 3/31/12 -----			----- 3/31/11 -----	
		ON-GRDS POPULATION	OFF-GRDS POPULATION	TOTAL POPULATION	OPERATIONAL CAPACITY ⁽¹⁾	ON-GRDS POPULATION
COLO STATE PENITENTIARY	756	721	3	724	756	749
CENTENNIAL CORR FAC	652	631	2	633	652	620
STERLING CORR FAC	2,585	2,510	22	2,532	2,545	2,517
LIMON CORR FAC	898	895	4	899	951	937
ARK VALLEY CORR FAC	1,007	1,011	5	1,016	1,007	993
BUENA VISTA CORR FAC	920	910	11	921	920	901
BUENA VISTA MIN CTR	304	281	21	302	292	287
COLO TERR CORR FAC	928	943	14	957	936	921
FORT LYON CORR FAC	0	0	0	0	500	485
FREMONT CORR FAC	1,661	1,650	14	1,664	1,661	1,644
LA VISTA CORR FAC	589	571	4	575	549	514
ARROWHEAD CORR CTR	524	520	1	521	494	489
FOUR MILE CORR CTR	525	523	4	527	499	504
TRINIDAD CORR FAC	504	499	9	508	484	477
SKYLINE CORR CTR	249	231	20	251	249	246
COLORADO CORR CTR	150	144	1	145	150	145
DELTA CORR CTR	484	438	2	440	484	443
RIFLE CORR CTR	192	174	18	192	192	191
DENVER WOMEN'S CORR FAC	976	973	5	978	976	957
DENVER REC DIAG CTR	542	554	12	566	480	448
SAN CARLOS CORR FAC	255	244	5	249	255	243
SUBTOTAL	14,701	14,423	177	14,600	15,032	14,711
CONTRACTS:						
BENT COUNTY CORR CTR		1,189	19	1,208		1,283
CROWLEY COUNTY CORR FAC		1,283	22	1,305		1,612
KIT CARSON COUNTY CORR FAC		692	3	695		785
CHEYENNE MTN REENTRY CTR		525	4	529		676
SUBTOTAL		3,689	48	3,737		4,356
OFF-GROUNDS POPULATION:						
ESCAPEES/WALKAWAYS			225	225		220
REVOCATIONS-JAIL				236		218
				0		0
JAIL BACKLOG:						
BACKLOG LESS THAN 72 HOURS			23	23	38	
BACKLOG GREATER THAN 72 HOURS (FISCAL YTD AVE =78)			36	36	31	
BACKLOG-PAROLEES AWAITING TRANSFER			39	39	33	
TOTAL JAIL BACKLOG			98	98		102
COUNTY JAIL CONTRACTS			19	19		27
COMMUNITY CENTERS						
PAROLE REVOCATIONS		1,495	77	1,572		1,773
REVOKED-RET TO CUST		1	0	1		2
REGRESSIONS		242	67	309		339
TOTAL COMM. CENTERS		1,738	195	1,933		2,200
ISP-INMATE						
REGRESSIONS		670	28	698		807
TOTAL ISP-INMATE		670	33	703		819
TOTAL COMM. CORRECTIONS						
MALE POPULATION				19,389		20,565
FEMALE POPULATION				1,937		2,088
TOTAL INMATE JURISDICTIONAL POPULATION				21,326		22,653

⁽¹⁾OPERATIONAL CAPACITY INCLUDES ALL BEDS AVAILABLE FOR USE, INCLUDING MANAGEMENT CONTROL UNITS, BUT EXCLUDES EMERGENCY DOUBLE BUNKING.

CURRENT MONTH CHANGES IN CAPACITY:

COLORADO DEPARTMENT OF CORRECTIONS
MONTHLY POPULATION AND CAPACITY REPORT
as of March 31, 2012

3-Apr-12

NET MONTHLY GROWTH RATE:

CURRENT MONTH	-236
FISCAL YEAR-TO-DATE AVERAGE	-143

YOUTHFUL OFFENDER SYSTEM

	----- 3/31/12 -----			3/31/11 TOTAL POPULATION
	PUEBLO	COMM. CORR.	TOTAL POPULATION	
INTAKE/IDO	9		9	0
RFP/REMEDICATION	9		9	26
PHASE I	190		190	182
PHASE II	13		13	19
PHASE III		46	46	42
OFF GROUNDS/BACKLOG			5	7
TOTAL Y.O.S. POPULATION	221	46	272	276

	CURRENT MONTH	FISCAL YR. TO DATE
YOS ADMISSIONS	8	62
YOS RELEASES:		
COMPLETION OF SENTENCE	2	41
JUDICIAL RELEASE TO PROB/CT ORD DISCHG	0	3
JUDICIAL TRANSFER TO DOC	0	0
TERMINATION/FAILURE	0	12
DECEASED	0	0
TOTAL RELEASES	2	56

PAROLE CASELOAD

	----- 3/31/12 -----			----- 2/29/12 -----		----- 3/31/11 -----	
	DOMESTIC	INTERST PAR/PROB	TOTAL CASELOAD	DOMESTIC	TOTAL CASELOAD	DOMESTIC	TOTAL CASELOAD
DENVER REGION							
REGULAR	2,713	83	2,796	2,674	2,757	2,471	2,554
ISP	<u>552</u>		<u>552</u>	<u>546</u>	<u>546</u>	<u>686</u>	<u>686</u>
SUBTOTAL	<u>3,265</u>	<u>83</u>	<u>3,348</u>	<u>3,220</u>	<u>3,303</u>	<u>3,157</u>	<u>3,240</u>
NORTHEAST REGION							
REGULAR	1,987	87	2,074	1,945	2,030	1,864	1,953
ISP	<u>380</u>		<u>380</u>	<u>373</u>	<u>373</u>	<u>371</u>	<u>371</u>
SUBTOTAL	<u>2,367</u>	<u>87</u>	<u>2,454</u>	<u>2,318</u>	<u>2,403</u>	<u>2,235</u>	<u>2,324</u>
SOUTHEAST REGION							
REGULAR	1,444	79	1,523	1,393	1,475	1,540	1,616
ISP	343		<u>343</u>	<u>357</u>	<u>357</u>	<u>390</u>	<u>390</u>
SUBTOTAL	<u>1,787</u>	<u>79</u>	<u>1,866</u>	<u>1,750</u>	<u>1,832</u>	<u>1,930</u>	<u>2,006</u>
WESTERN REGION							
REGULAR	550	39	589	544	582	540	586
ISP	100		<u>100</u>	<u>111</u>	<u>111</u>	<u>147</u>	<u>147</u>
SUBTOTAL	<u>650</u>	<u>39</u>	<u>689</u>	<u>655</u>	<u>693</u>	<u>687</u>	<u>733</u>
TOTAL CASELOAD							
REGULAR	6,694	288	6,982	6,556	6,844	6,415	6,709
ISP	<u>1,375</u>		<u>1,375</u>	<u>1,387</u>	<u>1,387</u>	<u>1,594</u>	<u>1,594</u>
TOTAL	<u>8,069</u>	<u>288</u>	<u>8,357</u>	<u>7,943</u>	<u>8,231</u>	<u>8,009</u>	<u>8,303</u>
ADDITIONAL CASELOAD:							
OUT-OF-STATE PAROLEES			1,945		1,921		1,973
PAROLEE ABSCONDERS			698		669		664

**COLORADO DEPARTMENT OF CORRECTIONS
MONTHLY POPULATION AND CAPACITY REPORT**

as of March 31, 2012

		----- FINAL CUSTODY DESIGNATION -----							
		Uncls.	Ad.Seg	Close	Medium	Min.-Res.	Minimum	Total	
Male Population	COLO STATE PENITENTIARY		597	5	80	25	17	724	
	CENTENNIAL CORR FAC		348	259	20	2	4	633	
	STERLING CORR FAC		71	643	452	876	490	2,532	
	LIMON CORR FAC		1	751	127	14	6	899	
	ARK VALLEY CORR FAC			449	260	186	121	1,016	
	BUENA VISTA CORR FAC			440	336	100	45	921	
	BUENA VISTA MIN CTR				1	195	106	302	
	COLO TERR CORR FAC		3	247	300	264	142	956	
	FREMONT CORR FAC			305	497	455	407	1,664	
	LA VISTA CORR FAC			8	21	34	26	89	
	ARROWHEAD CORR CTR				1	324	196	521	
	FOUR MILE CORR CTR				1	374	152	527	
	TRINIDAD CORR FAC				1	448	59	508	
	SKYLINE CORR CTR					3	248	251	
	COLORADO CORR CTR						145	145	
	DELTA CORR CTR					1	439	440	
	RIFLE CORR CTR						192	192	
	DENVER REC DIAG CTR		125	5	82	141	165	43	561
	SAN CARLOS CORR FAC			24	100	50	53	22	249
	CONTRACTS:								
	BENT COUNTY CORR CTR				5	709	339	155	1,208
	CROWLEY COUNTY CORR FAC				2	782	321	200	1,305
	KIT CARSON COUNTY CORR FAC				3	420	173	99	695
	CHEYENNE MTN REENTRY CTR					216	240	73	529
	COMMUNITY/ISP				3	19	29	1871	1,922
	Total Classified Male Population		125	1,049	3,302	4,434	4,621	5,258	18,789
	Percent of Total		0.7%	5.6%	17.6%	23.6%	24.6%	28.0%	
	Unclassified Facilities:								
	JAIL BACKLOG/REVOCATIONS								84
	COUNTY JAIL CONTRACTS								1
	REVOKED TO JAIL								0
	REVOKED TO COMM CTR								1
	REVOKED-RET TO CUST FAC (57 off-grounds)								260
COMM/ISP REGRESSIONS								48	
ESCAPEES/WALKAWAYS								206	
Total Unclassified Facilities								600	
Total Male Population								19,389	
Female Population	DENVER WOMEN'S CORR FAC	10	19	197	168	310	274	978	
	LA VISTA CORR FAC			60	83	177	166	486	
	DENVER REC DIAG CTR INF			1		2	2	5	
	COLO TERR CORR FAC INF.				1			1	
	COMMUNITY/ISP			2	4	12	330	348	
	Total Classified Female Population	10	19	260	256	501	772	1,818	
	Percent of Total	0.6%	1.0%	14.3%	14.1%	27.6%	42.5%		
	Unclassified Facilities:								
	JAIL BACKLOG/REVOCATIONS								14
	COUNTY JAIL CONTRACTS								18
	REVOKED TO JAIL								0
	REVOKED TO COMM CTR								0
	REVOKED-RET TO CUST FAC (10 off-grounds)								49
COMM/ISP REGRESSIONS								8	
ESCAPEES/WALKAWAYS								30	
Total Unclassified Facilities								119	
Total Female Population								1,937	
Total Classified Population		135	1,068	3,562	4,690	5,122	6,030	20,607	
Percent of Total		0.7%	5.2%	17.3%	22.8%	24.9%	29.3%		

COLORADO DEPARTMENT OF CORRECTIONS

ADULT INMATE JURISDICTIONAL POPULATION ⁽¹⁾

DATE: 4/3/2012

DATE	MALE POPULATION			FEMALE POPULATION			TOTAL POPULATION		
	Male Population	Net Change	Fiscal Y-T-D Average	Female Population	Net Change	Fiscal Y-T-D Average	Total Population	Net Change	Fiscal Y-T-D Average
03-31-12	19,389	-187		1,937	-49		21,326	-236	
02-29-12	19,576	-180		1,986	-41		21,562	-221	
01-31-12	19,756	-96		2,027	-8		21,783	-104	
12-31-11	19,852	-146		2,035	-31		21,887	-177	
11-30-11	19,998	-205	-125	2,066	-27	-18	22,064	-232	-143
10-31-11	20,203	-188		2,093	-24		22,296	-212	
09-30-11	20,391	-16		2,117	9		22,508	-7	
08-31-11	20,407	-84		2,108	10		22,515	-74	
07-31-11	20,491	-21		2,098	0		22,589	-21	
06-30-11	20,512	-59		2,098	-11		22,610	-70	
05-31-11	20,571	-1		2,109	6		22,680	5	
04-30-11	20,572	7		2,103	15		22,675	22	
03-31-11	20,565	35		2,088	25		22,653	60	
02-28-11	20,530	1		2,063	-18		22,593	-17	
01-31-11	20,529	-17		2,081	4		22,610	-13	
12-31-10	20,546	-123	-21	2,077	-22	0	22,623	-145	-21
11-30-10	20,669	-26		2,099	2		22,768	-24	
10-31-10	20,695	16		2,097	4		22,792	20	
09-30-10	20,679	-89		2,093	-5		22,772	-94	
08-31-10	20,768	47		2,098	6		22,866	53	
07-31-10	20,721	-45		2,092	-2		22,813	-47	
06-30-10	20,766	17		2,094	-14		22,860	3	
05-31-10	20,749	-15		2,108	5		22,857	-10	
04-30-10	20,764	81		2,103	9		22,867	90	
03-31-10	20,683	83		2,094	-20		22,777	63	
02-28-10	20,600	48		2,114	-8		22,714	40	
01-31-10	20,552	29		2,122	-16		22,674	13	
12-31-09	20,523	-22	-11	2,138	-13	-16	22,661	-35	-27
11-30-09	20,545	-176		2,151	-50		22,696	-226	
10-31-09	20,721	-179		2,201	-21		22,922	-200	
09-30-09	20,900	-13		2,222	-43		23,122	-56	
08-31-09	20,913	-15		2,265	-27		23,178	-42	
07-31-09	20,928	32		2,292	2		23,220	34	
06-30-09	20,896		16	2,290		-1	23,186		15
06-30-08	20,684		42	2,305		-3	22,989		39
06-30-07	20,178		32	2,341		10	22,519		42
06-30-06	19,792		97	2,220		12	22,012		109
06-30-05	18,631		68	2,073		27	20,704		95
06-30-04	17,814		49	1,755		11	19,569		60
06-30-03	17,226		57	1,620		10	18,846		67
06-30-02	16,539		87	1,506		14	18,045		101
06-30-01	15,493		63	1,340		6	16,833		70
06-30-00	14,733		99	1,266		7	15,999		106
06-30-99	13,547		75	1,179		14	14,726		89
06-30-98	12,647			1,016			13,663		

⁽¹⁾ Adult inmate jurisdictional population includes on-grounds, off-grounds, out-of-state, escapees, and jail backlog and excludes offenders sentenced to the Youthful Offender System (YOS).

COLORADO DEPARTMENT OF CORRECTIONS
ADULT INMATE RELEASES FROM PRISON
TOTAL Population (Male and Female)

4/3/2012

	Parole ⁽¹⁾							Discharge			Other				Total
	Discretionary	Mandatory	Wknd. Mand.	Mand. Repar.	Wknd. Mand. Repar.	HB 1351 Early	Accl Trans	Sentence ⁽²⁾	Martin/Cooper	Chgs/Det.	Probation	Ct. Ord. Dsch.	Appeal Bond	Deceased	
Mar-12	413	128	78	110	59	62	0	84	1	12	5	7	0	5	964
Feb-12	360	116	95	98	68	68	0	94	1	15	13	3	0	6	937
Jan-12	312	116	98	97	68	70	0	87	3	21	5	7	0	3	887
Dec-11	241	109	101	114	100	61	0	92	2	9	10	5	0	5	849
Nov-11	297	136	106	125	75	84	0	105	5	12	8	4	0	4	961
Oct-11	273	135	108	113	84	69	0	100	2	16	12	1	0	0	913
Sep-11	209	108	104	92	65	74	0	100	1	16	10	4	0	3	786
Aug-11	279	123	100	133	64	85	0	87	2	13	4	3	0	1	894
Jul-11	194	109	99	135	56	75	0	80	3	20	5	5	0	3	784
FY 2012-Avg	286	120	99	113	71	72	N/A	92	2	15	8	4	0	3	886
FY 2011-Avg	176	138	107	126	76	88	N/A	100	2	16	8	6	0	4	847
FY 2010-Avg.	262	144	122	118	88	43	N/A	101	3	13	11	8	0	4	917
FY 2009-Avg.	343	188	85	93	44	N/A	N/A	98	5	17	12	10	0	4	899
FY 2008-Avg.	466	186	N/A	88	N/A	N/A	N/A	89	8	17	12	11	0	4	881
FY 2007-Avg.	422	198	N/A	87	N/A	N/A	N/A	81	9	16	13	9	0	4	839
FY 2006-Avg.	234	267	N/A	98	N/A	N/A	N/A	89	13	15	16	10	0	4	746

Definitions of Release Types

Discretionary parole-Released to parole through Parole Board discretion prior to mandatory release or sentence discharge date.

Mandatory parole-Released to parole on mandatory release date.

Wknd Mand.-Mandatory releases scheduled to release on a weekend; released a few days early under Parole Board authority.

Mand. Repar-Reparoled on specific date set by Parole Board (includes S.B. 252 reparoles). n/a - breakout not available prior to June 2004.

Wknd Mand. Repar.-Mandatory Reparole releases scheduled to release on a weekend; released a few days early under Parole Board authority.

HB 1351 Early - Released to parole, subject to earn time provisions of H.B. 09-1351.

Accl Trans - Accelerated Transition released to parole prior to mandatory release by parole board based on program eligibility criteria.

Sentence discharge-Completion of sentence with no further supervision.

Martin/ Cooper discharge-Completion of sentence with no further supervision, sex offender subject to Martin/Cooper Supreme Court decision.

Chgs/ Det. discharge-Completion of sentence, released to other law enforcement for pending charges or detainees.

Probation-Released by court to probation.

Ct. Ord. Dsch.-Released by court order.

Appeal Bond-Released by court to appeal bond.

Deceased-Offender death in prison.

⁽¹⁾Due to the decrease in community transportation services, the Department implemented a procedural change in December 2005 with regards to releasing inmates on weekends. As a result, discretionary releases increased and mandatory releases decreased. However, beginning December 2008, the implementation of a new electronic coding system enabled these releases to be correctly classified as weekend mandatory parole and mandatory reparole releases.

⁽²⁾Sentence is now a combination of Sentence and HB 1087 due to legislation passed in 2009.

COLORADO DEPARTMENT OF CORRECTIONS
ADULT INMATE RELEASES FROM PRISON

4/3/2012

Male Population Only

	Parole ⁽¹⁾							Discharge			Other				Total
	Discretionary	Mandatory	Wknd. Mand.	Mand. Repar.	Wknd. Mand. Repar.	HB 1351 Early	Accel Trans	Sentence ⁽²⁾	Martin/Cooper	Chgs/Det.	Probation	Ct. Ord. Dsch.	Appeal Bond	Deceased	
Mar-12	349	112	69	89	56	57	0	76	1	11	5	6	0	5	836
Feb-12	304	109	83	82	59	60	0	85	1	14	12	3	0	6	818
Jan-12	255	105	94	82	58	66	0	78	3	17	3	7	0	3	771
Dec-11	206	100	92	103	85	48	0	86	2	9	9	2	0	5	747
Nov-11	256	121	95	113	69	72	0	83	5	11	7	4	0	4	840
Oct-11	227	128	94	96	76	61	0	84	2	15	10	1	0	0	794
Sep-11	172	100	94	79	55	66	0	92	1	16	7	4	0	3	689
Aug-11	242	110	94	116	54	77	0	79	2	12	3	2	0	1	792
Jul-11	166	94	88	117	49	63	0	70	3	18	4	5	0	3	680
FY 2012-Avg.	242	109	89	97	62	63	0	81	2	14	7	4	0	3	774
FY 2011-Avg.	147	125	98	110	67	76	0	89	2	15	7	5	0	4	745
FY 2010-Avg.	216	131	108	104	77	36	N/A	91	3	13	10	7	0	4	800
FY 2009-Avg.	294	167	75	80	40	N/A	N/A	88	5	15	10	9	0	4	787
FY 2008-Avg.	397	162	N/A	76	N/A	N/A	N/A	80	8	15	10	9	0	4	761
FY 2007-Avg.	359	175	N/A	76	N/A	N/A	N/A	73	9	15	11	8	0	4	730
FY 2006-Avg.	195	233	N/A	84	N/A	N/A	N/A	81	13	14	14	9	0	4	647

Female Population Only

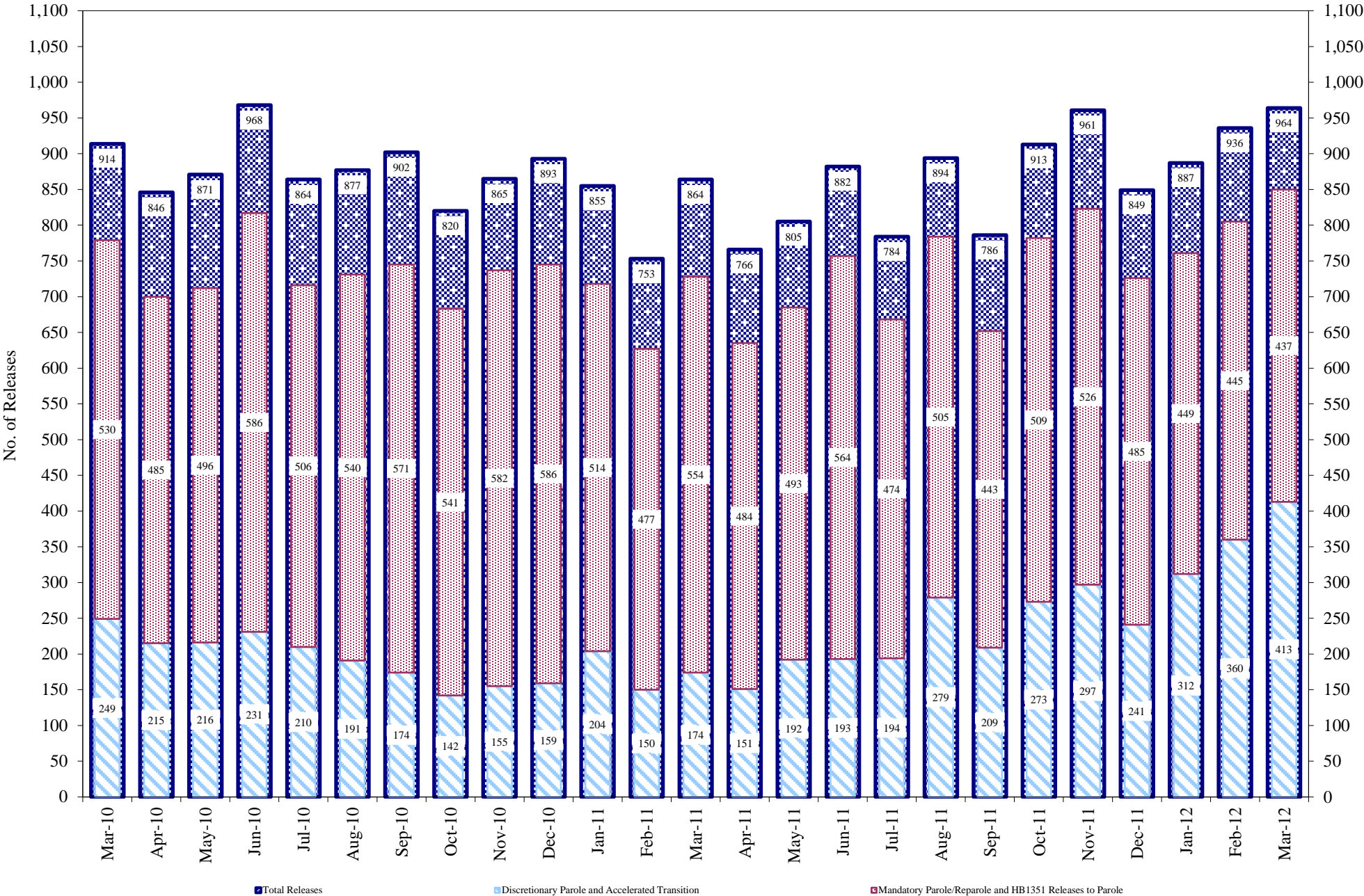
	Parole ⁽¹⁾							Discharge			Other				Total
	Discretionary	Mandatory	Wknd. Mand.	Mand. Repar.	Wknd. Mand. Repar.	HB 1351 Early	Accel Trans	Sentence ⁽²⁾	Martin/Cooper	Chgs/Det.	Probation	Ct. Ord. Dsch.	Appeal Bond	Deceased	
Mar-12	64	16	9	21	3	5	0	8	0	1	0	1	0	0	128
Feb-12	56	7	12	16	9	8	0	9	0	1	1	0	0	0	119
Jan-12	57	11	4	15	10	4	0	9	0	4	2	0	0	0	116
Dec-11	35	9	9	11	15	13	0	6	0	0	1	3	0	0	102
Nov-11	41	15	11	12	6	12	0	22	0	1	1	0	0	0	121
Oct-11	46	7	14	17	8	8	0	16	0	1	2	0	0	0	119
Sep-11	37	8	10	13	10	8	0	8	0	0	3	0	0	0	97
Aug-11	37	13	6	17	10	8	0	8	0	1	1	1	0	0	102
Jul-11	28	15	11	18	7	12	0	10	0	2	1	0	0	0	104
FY 2012-Avg.	45	11	10	16	9	9	0	11	0	1	1	1	0	0	112
FY 2011-Avg.	29	13	9	16	9	12	0	11	0	1	1	1	0	0	102
FY 2010-Avg.	46	13	14	14	11	7	N/A	10	0	0	1	1	0	0	117
FY 2009-Avg.	49	21	10	13	4	N/A	N/A	10	0	2	2	1	0	0	112
FY 2008-Avg.	69	24	N/A	12	N/A	N/A	N/A	9	0	2	2	2	0	0	120
FY 2007-Avg.	63	23	N/A	11	N/A	N/A	N/A	8	0	1	2	1	0	0	109
FY 2006-Avg.	39	34	N/A	14	N/A	N/A	N/A	8	0	1	2	1	0	0	99

Definitions of Release Types

See previous page.

COLORADO DEPARTMENT OF CORRECTIONS

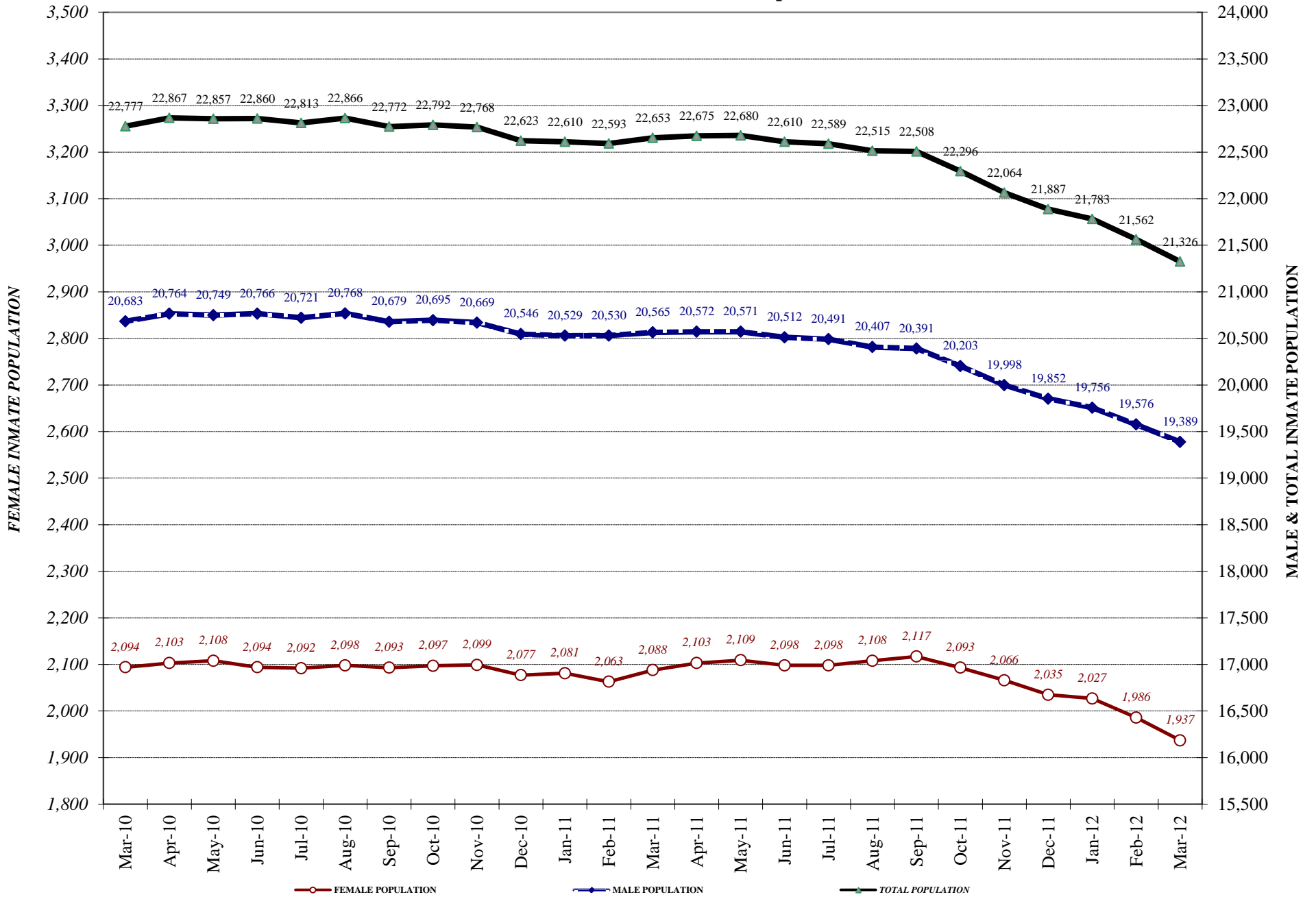
Adult Prison Releases



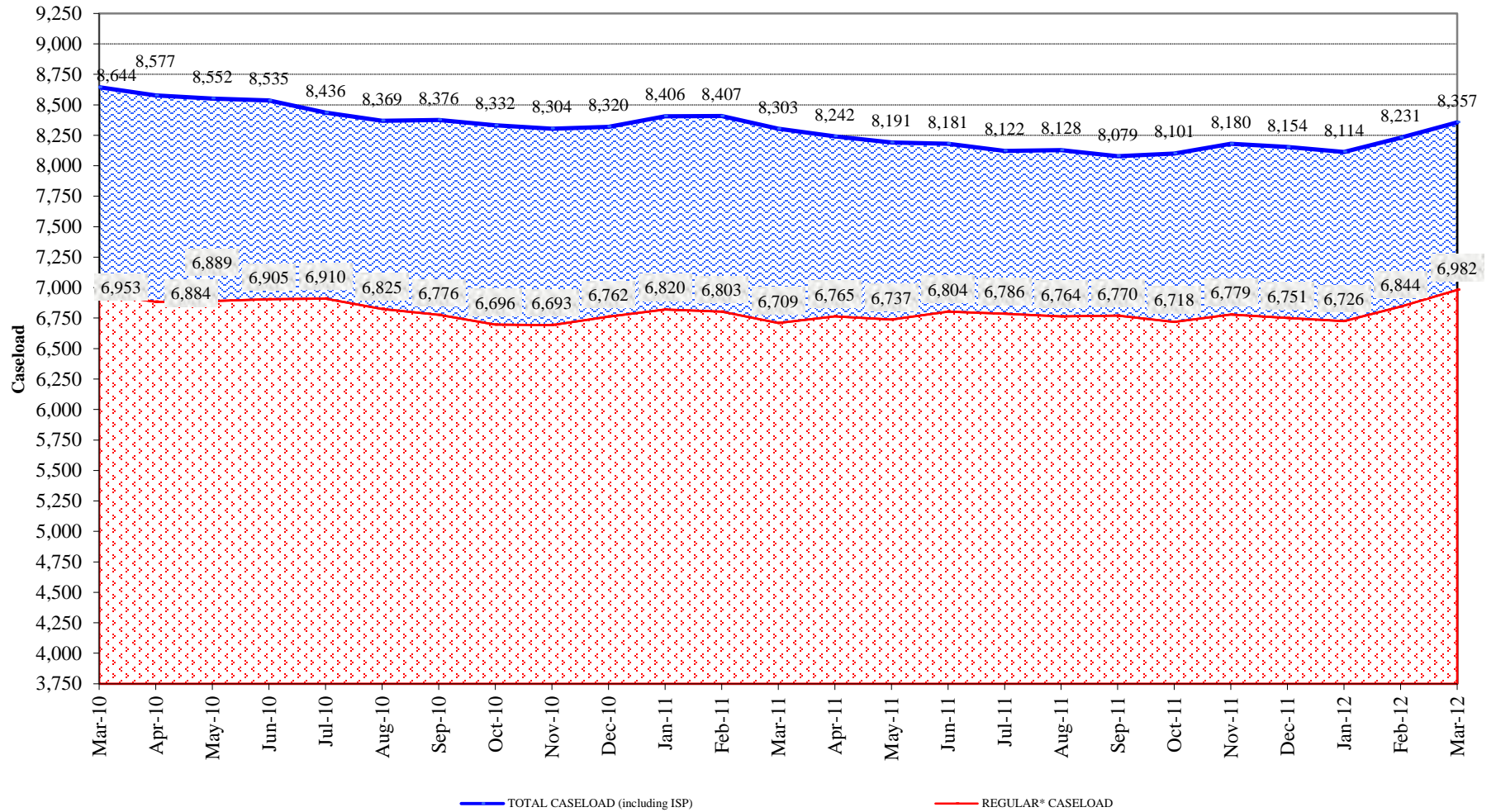
Total releases include releases to discretionary parole and accelerated transition, mandatory parole/reparole and HB1351, all types of discharges and other releases as detailed on the previous two pages.

COLORADO DEPARTMENT OF CORRECTIONS

Adult Jurisdiction Inmate Population



COLORADO DEPARTMENT OF CORRECTIONS Parole Population



* Regular caseload includes interstate parole, but excludes out-of-state parolees and absconders.