

**COLORADO DEPARTMENT OF CORRECTIONS
MONTHLY POPULATION AND CAPACITY REPORT
as of February 29, 2012**

5-Mar-12

	2/29/12 OPERATIONAL CAPACITY ⁽¹⁾	----- 2/29/12 -----			----- 2/28/11 -----	
		ON-GRDS POPULATION	OFF-GRDS POPULATION	TOTAL POPULATION	OPERATIONAL CAPACITY ⁽¹⁾	ON-GRDS POPULATION
COLO STATE PENITENTIARY	756	727	2	729	756	748
CENTENNIAL CORR FAC	652	632	2	634	652	610
STERLING CORR FAC	2,585	2,500	21	2,521	2,545	2,493
LIMON CORR FAC	898	889	3	892	951	935
ARK VALLEY CORR FAC	1,007	1,005	11	1,016	1,007	997
BUENA VISTA CORR FAC	920	905	12	917	920	913
BUENA VISTA MIN CTR	304	299	1	300	292	285
COLO TERR CORR FAC	928	915	14	929	936	901
FORT LYON CORR FAC	0	0	0	0	500	475
FREMONT CORR FAC	1,661	1,652	16	1,668	1,661	1,631
LA VISTA CORR FAC	589	565	11	576	549	534
ARROWHEAD CORR CTR	524	518	3	521	494	489
FOUR MILE CORR CTR	525	513	3	516	499	495
TRINIDAD CORR FAC	504	496	10	506	484	476
SKYLINE CORR CTR	249	247	4	251	249	232
COLORADO CORR CTR	150	147	1	148	150	150
DELTA CORR CTR	484	457	1	458	484	462
RIFLE CORR CTR	192	185	1	186	192	192
DENVER WOMEN'S CORR FAC	976	946	9	955	976	943
DENVER REC DIAG CTR	542	543	11	554	480	456
SAN CARLOS CORR FAC	255	249	4	253	255	245
SUBTOTAL	14,701	14,390	140	14,530	15,032	14,662
CONTRACTS:						
BENT COUNTY CORR CTR		1,195	23	1,218		1,282
CROWLEY COUNTY CORR FAC		1,353	23	1,376		1,603
KIT CARSON COUNTY CORR FAC		692	5	697		789
CHEYENNE MTN REENTRY CTR		550	6	556		688
SUBTOTAL		3,790	57	3,847		4,362
OFF-GROUNDS POPULATION:						
ESCAPEES/WALKAWAYS			197	197		240
REVOCATIONS-JAIL				219		220
REVOCATIONS-JAIL				0		0
JAIL BACKLOG:						
BACKLOG LESS THAN 72 HOURS			69	69	25	
BACKLOG GREATER THAN 72 HOURS (FISCAL YTD AVE =78)			56	56	50	
BACKLOG-PAROLEES AWAITING TRANSFER			61	61	25	
TOTAL JAIL BACKLOG			186	186		100
COUNTY JAIL CONTRACTS			30	30		29
COMMUNITY CENTERS						
PAROLE REVOCATIONS		1,561	76	1,637		1,689
REVOKED-RET TO CUST		0	1	1		2
REGRESSIONS		232	76	308		335
REGRESSIONS			106	106		159
TOTAL COMM. CENTERS		1,793	259	2,052		2,185
ISP-INMATE						
REGRESSIONS		672	21	693		798
REGRESSIONS			5	5		17
TOTAL ISP-INMATE		672	26	698		815
TOTAL COMM. CORRECTIONS		2,465	285	2,750		3,000
MALE POPULATION				19,576		20,530
FEMALE POPULATION				1,986		2,063
TOTAL INMATE JURISDICTIONAL POPULATION				21,562		22,593

⁽¹⁾OPERATIONAL CAPACITY INCLUDES ALL BEDS AVAILABLE FOR USE, INCLUDING MANAGEMENT CONTROL UNITS, BUT EXCLUDES EMERGENCY DOUBLE BUNKING.

CURRENT MONTH CHANGES IN CAPACITY:

Fort Lyon Correctional Facility	Decommissioning of beds	-134 beds
Sterling Correctional Facility	General Housing expansion	+40 beds
Trinidad Correctional Facility	General Housing expansion	+20 beds

COLORADO DEPARTMENT OF CORRECTIONS
MONTHLY POPULATION AND CAPACITY REPORT
as of February 29, 2012

5-Mar-12

NET MONTHLY GROWTH RATE:

CURRENT MONTH	-221
FISCAL YEAR-TO-DATE AVERAGE	-131

YOUTHFUL OFFENDER SYSTEM

	----- 2/29/12 -----			2/28/11 TOTAL POPULATION
	PUEBLO	COMM. CORR.	TOTAL POPULATION	
INTAKE/IDO	5		5	5
RFP/REMEDICATION	18		18	23
PHASE I	183		183	190
PHASE II	12		12	10
PHASE III		42	42	41
OFF GROUNDS/BACKLOG			4	8
TOTAL Y.O.S. POPULATION	218	42	264	277

	CURRENT MONTH	FISCAL YR. TO DATE
YOS ADMISSIONS	7	54
YOS RELEASES:		
COMPLETION OF SENTENCE	9	39
JUDICIAL RELEASE TO PROB/CT ORD DISCHG	0	3
JUDICIAL TRANSFER TO DOC	0	0
TERMINATION/FAILURE	0	12
DECEASED	0	0
TOTAL RELEASES	9	54

PAROLE CASELOAD

	----- 2/29/12 -----			----- 1/31/12 -----		----- 2/28/11 -----	
	DOMESTIC	INTERST PAR/PROB	TOTAL CASELOAD	DOMESTIC	TOTAL CASELOAD	DOMESTIC	TOTAL CASELOAD
DENVER REGION							
REGULAR	2,674	83	2,757	2,582	2,662	2,500	2,585
ISP	546		546	536	536	685	685
SUBTOTAL	3,220	83	3,303	3,118	3,198	3,185	3,270
NORTHEAST REGION							
REGULAR	1,945	85	2,030	1,907	1,987	1,876	1,971
ISP	373		373	387	387	375	375
SUBTOTAL	2,318	85	2,403	2,294	2,374	2,251	2,346
SOUTHEAST REGION							
REGULAR	1,393	82	1,475	1,400	1,484	1,554	1,635
ISP	357		357	354	354	403	403
SUBTOTAL	1,750	82	1,832	1,754	1,838	1,957	2,038
WESTERN REGION							
REGULAR	544	38	582	560	593	564	612
ISP	111		111	111	111	141	141
SUBTOTAL	655	38	693	671	704	705	753
TOTAL CASELOAD							
REGULAR	6,556	288	6,844	6,449	6,726	6,494	6,803
ISP	1,387		1,387	1,388	1,388	1,604	1,604
TOTAL	7,943	288	8,231	7,837	8,114	8,098	8,407
ADDITIONAL CASELOAD:							
OUT-OF-STATE PAROLEES			1,921		1,910		1,964
PAROLEE ABSCONDERS			669		666		668

**COLORADO DEPARTMENT OF CORRECTIONS
MONTHLY POPULATION AND CAPACITY REPORT**

as of February 29, 2012

		----- FINAL CUSTODY DESIGNATION -----							
		Uncls.	Ad.Seg	Close	Medium	Min.-Res.	Minimum	Total	
Male Population	COLO STATE PENITENTIARY		630	4	60	23	12	729	
	CENTENNIAL CORR FAC		350	283	1			634	
	STERLING CORR FAC		84	684	419	864	470	2,521	
	LIMON CORR FAC		1	727	145	15	4	892	
	ARK VALLEY CORR FAC			441	264	190	121	1,016	
	BUENA VISTA CORR FAC			456	327	96	38	917	
	BUENA VISTA MIN CTR				4	193	103	300	
	COLO TERR CORR FAC		3	216	289	262	159	929	
	FREMONT CORR FAC			294	473	468	433	1,668	
	LA VISTA CORR FAC			8	21	34	19	82	
	ARROWHEAD CORR CTR					329	192	521	
	FOUR MILE CORR CTR				1	357	158	516	
	TRINIDAD CORR FAC				1	446	59	506	
	SKYLINE CORR CTR					2	249	251	
	COLORADO CORR CTR						148	148	
	DELTA CORR CTR						458	458	
	RIFLE CORR CTR					1	185	186	
	DENVER REC DIAG CTR		98	3	72	166	157	55	551
	SAN CARLOS CORR FAC			23	105	47	50	28	253
	CONTRACTS:								
		BENT COUNTY CORR CTR			6	709	341	162	1,218
		CROWLEY COUNTY CORR FAC			1	798	353	224	1,376
		KIT CARSON COUNTY CORR FAC			3	422	173	99	697
		CHEYENNE MTN REENTRY CTR			1	216	259	80	556
		COMMUNITY/ISP			4	25	35	1893	1,957
		Total Classified Male Population	98	1,094	3,305	4,388	4,648	5,349	18,882
		Percent of Total	0.5%	5.8%	17.5%	23.2%	24.6%	28.3%	
		Unclassified Facilities:							
		JAIL BACKLOG/REVOCATIONS							147
		COUNTY JAIL CONTRACTS							1
		REVOKED TO JAIL							0
		REVOKED TO COMM CTR							1
		REVOKED-RET TO CUST FAC (64 off-grounds)							255
	COMM/ISP REGRESSIONS							98	
	ESCAPEES/WALKAWAYS							192	
	Total Unclassified Facilities							694	
	Total Male Population							19,576	
Female Population	DENVER WOMEN'S CORR FAC		2	21	194	168	299	271	955
	LA VISTA CORR FAC				58	82	188	166	494
	DENVER REC DIAG CTR INF				1		1	1	3
	COLO TERR CORR FAC INF.								0
	COMMUNITY/ISP				1	2	12	358	373
		Total Classified Female Population	2	21	254	252	500	796	1,825
		Percent of Total	0.1%	1.2%	13.9%	13.8%	27.4%	43.6%	
		Unclassified Facilities:							
		JAIL BACKLOG/REVOCATIONS							39
		COUNTY JAIL CONTRACTS							29
		REVOKED TO JAIL							0
		REVOKED TO COMM CTR							0
		REVOKED-RET TO CUST FAC (12 off-grounds)							53
	COMM/ISP REGRESSIONS							13	
	ESCAPEES/WALKAWAYS							27	
	Total Unclassified Facilities							161	
	Total Female Population							1,986	
	Total Classified Population	100	1,115	3,559	4,640	5,148	6,145	20,707	
	Percent of Total	0.5%	5.4%	17.2%	22.4%	24.9%	29.7%		

COLORADO DEPARTMENT OF CORRECTIONS

ADULT INMATE JURISDICTIONAL POPULATION ⁽¹⁾

DATE: 3/5/2012

DATE	MALE POPULATION			FEMALE POPULATION			TOTAL POPULATION		
	Male Population	Net Change	Fiscal Y-T-D Average	Female Population	Net Change	Fiscal Y-T-D Average	Total Population	Net Change	Fiscal Y-T-D Average
02-29-12	19,576	-180		1,986	-41		21,562	-221	
01-31-12	19,756	-96		2,027	-8		21,783	-104	
12-31-11	19,852	-146		2,035	-31		21,887	-177	
11-30-11	19,998	-205	-117	2,066	-27	-14	22,064	-232	-131
10-31-11	20,203	-188		2,093	-24		22,296	-212	
09-30-11	20,391	-16		2,117	9		22,508	-7	
08-31-11	20,407	-84		2,108	10		22,515	-74	
07-31-11	20,491	-21		2,098	0		22,589	-21	
06-30-11	20,512	-59		2,098	-11		22,610	-70	
05-31-11	20,571	-1		2,109	6		22,680	5	
04-30-11	20,572	7		2,103	15		22,675	22	
03-31-11	20,565	35		2,088	25		22,653	60	
02-28-11	20,530	1		2,063	-18		22,593	-17	
01-31-11	20,529	-17		2,081	4		22,610	-13	
12-31-10	20,546	-123	-21	2,077	-22	0	22,623	-145	-21
11-30-10	20,669	-26		2,099	2		22,768	-24	
10-31-10	20,695	16		2,097	4		22,792	20	
09-30-10	20,679	-89		2,093	-5		22,772	-94	
08-31-10	20,768	47		2,098	6		22,866	53	
07-31-10	20,721	-45		2,092	-2		22,813	-47	
06-30-10	20,766	17		2,094	-14		22,860	3	
05-31-10	20,749	-15		2,108	5		22,857	-10	
04-30-10	20,764	81		2,103	9		22,867	90	
03-31-10	20,683	83		2,094	-20		22,777	63	
02-28-10	20,600	48		2,114	-8		22,714	40	
01-31-10	20,552	29		2,122	-16		22,674	13	
12-31-09	20,523	-22	-11	2,138	-13	-16	22,661	-35	-27
11-30-09	20,545	-176		2,151	-50		22,696	-226	
10-31-09	20,721	-179		2,201	-21		22,922	-200	
09-30-09	20,900	-13		2,222	-43		23,122	-56	
08-31-09	20,913	-15		2,265	-27		23,178	-42	
07-31-09	20,928	32		2,292	2		23,220	34	
06-30-09	20,896		16	2,290		-1	23,186		15
06-30-08	20,684		42	2,305		-3	22,989		39
06-30-07	20,178		32	2,341		10	22,519		42
06-30-06	19,792		97	2,220		12	22,012		109
06-30-05	18,631		68	2,073		27	20,704		95
06-30-04	17,814		49	1,755		11	19,569		60
06-30-03	17,226		57	1,620		10	18,846		67
06-30-02	16,539		87	1,506		14	18,045		101
06-30-01	15,493		63	1,340		6	16,833		70
06-30-00	14,733		99	1,266		7	15,999		106
06-30-99	13,547		75	1,179		14	14,726		89
06-30-98	12,647			1,016			13,663		

⁽¹⁾ Adult inmate jurisdictional population includes on-grounds, off-grounds, out-of-state, escapees, and jail backlog and excludes offenders sentenced to the Youthful Offender System (YOS).

COLORADO DEPARTMENT OF CORRECTIONS
ADULT INMATE RELEASES FROM PRISON
TOTAL Population (Male and Female)

3/14/2012

	Parole ⁽¹⁾							Discharge			Other				Total
	Discretionary	Mandatory	Wknd. Mand.	Mand. Repar.	Wknd. Mand. Repar.	HB 1351 Early	Accl Trans	Sentence ⁽²⁾	Martin/Cooper	Chgs/Det.	Probation	Ct. Ord. Dsch.	Appeal Bond	Deceased	
Feb-12	360	116	95	98	68	68	0	94	1	15	13	3	0	5	936
Jan-12	312	116	98	97	68	70	0	87	3	21	5	7	0	3	887
Dec-11	241	109	101	114	100	61	0	92	2	9	10	5	0	5	849
Nov-11	297	136	106	125	75	84	0	105	5	12	8	4	0	4	961
Oct-11	273	135	108	113	84	69	0	100	2	16	12	1	0	0	913
Sep-11	209	108	104	92	65	74	0	100	1	16	10	4	0	3	786
Aug-11	279	123	100	133	64	85	0	87	2	13	4	3	0	1	894
Jul-11	194	109	99	135	56	75	0	80	3	20	5	5	0	3	784
FY 2012-Avg	271	119	101	113	73	73	N/A	93	2	15	8	4	0	3	876
FY 2011-Avg	176	138	107	126	76	88	N/A	100	2	16	8	6	0	4	847
FY 2010-Avg.	262	144	122	118	88	43	N/A	101	3	13	11	8	0	4	917
FY 2009-Avg.	343	188	85	93	44	N/A	N/A	98	5	17	12	10	0	4	899
FY 2008-Avg.	466	186	N/A	88	N/A	N/A	N/A	89	8	17	12	11	0	4	881
FY 2007-Avg.	422	198	N/A	87	N/A	N/A	N/A	81	9	16	13	9	0	4	839
FY 2006-Avg.	234	267	N/A	98	N/A	N/A	N/A	89	13	15	16	10	0	4	746

Definitions of Release Types

Discretionary parole-Released to parole through Parole Board discretion prior to mandatory release or sentence discharge date.

Mandatory parole-Released to parole on mandatory release date.

Wknd Mand.-Mandatory releases scheduled to release on a weekend; released a few days early under Parole Board authority.

Mand. Repar.-Reparoled on specific date set by Parole Board (includes S.B. 252 reparoles). n/a - breakout not available prior to June 2004.

Wknd Mand. Repar.-Mandatory Reparole releases scheduled to release on a weekend; released a few days early under Parole Board authority.

HB 1351 Early - Released to parole, subject to earn time provisions of H.B. 09-1351.

Accl Trans - Accelerated Transition released to parole prior to mandatory release by parole board based on program eligibility criteria.

Sentence discharge-Completion of sentence with no further supervision.

Martin/ Cooper discharge-Completion of sentence with no further supervision, sex offender subject to Martin/Cooper Supreme Court decision.

Chgs/ Det. discharge-Completion of sentence, released to other law enforcement for pending charges or detainers.

Probation-Released by court to probation.

Ct. Ord. Dsch.-Released by court order.

Appeal Bond-Released by court to appeal bond.

Deceased-Offender death in prison.

⁽¹⁾Due to the decrease in community transportation services, the Department implemented a procedural change in December 2005 with regards to releasing inmates on weekends. As a result, discretionary releases increased and mandatory releases decreased. However, beginning December 2008, the implementation of a new electronic coding system enabled these releases to be correctly classified as weekend mandatory parole and mandatory reparole releases.

⁽²⁾Sentence is now a combination of Sentence and HB 1087 due to legislation passed in 2009.

COLORADO DEPARTMENT OF CORRECTIONS
ADULT INMATE RELEASES FROM PRISON

3/16/2012

Male Population Only

	Parole ⁽¹⁾							Discharge			Other				Total
	Discretionary	Mandatory	Wknd. Mand.	Mand. Repar.	Wknd. Mand. Repar.	HB 1351 Early	Accel Trans	Sentence ⁽²⁾	Martin/Cooper	Chgs/Det.	Probation	Ct. Ord. Dsch.	Appeal Bond	Deceased	
Feb-12	304	109	83	82	59	60	0	85	1	14	12	3	0	5	817
Jan-12	255	105	94	82	58	66	0	78	3	17	3	7	0	3	771
Dec-11	206	100	92	103	85	48	0	86	2	9	9	2	0	5	747
Nov-11	256	121	95	113	69	72	0	83	5	11	7	4	0	4	840
Oct-11	227	128	94	96	76	61	0	84	2	15	10	1	0	0	794
Sep-11	172	100	94	79	55	66	0	92	1	16	7	4	0	3	689
Aug-11	242	110	94	116	54	77	0	79	2	12	3	2	0	1	792
Jul-11	166	94	88	117	49	63	0	70	3	18	4	5	0	3	680
FY 2012-Avg.	229	108	92	99	63	64	0	82	2	14	7	4	0	3	766
FY 2011-Avg.	147	125	98	110	67	76	0	89	2	15	7	5	0	4	745
FY 2010-Avg.	216	131	108	104	77	36	N/A	91	3	13	10	7	0	4	800
FY 2009-Avg.	294	167	75	80	40	N/A	N/A	88	5	15	10	9	0	4	787
FY 2008-Avg.	397	162	N/A	76	N/A	N/A	N/A	80	8	15	10	9	0	4	761
FY 2007-Avg.	359	175	N/A	76	N/A	N/A	N/A	73	9	15	11	8	0	4	730
FY 2006-Avg.	195	233	N/A	84	N/A	N/A	N/A	81	13	14	14	9	0	4	647

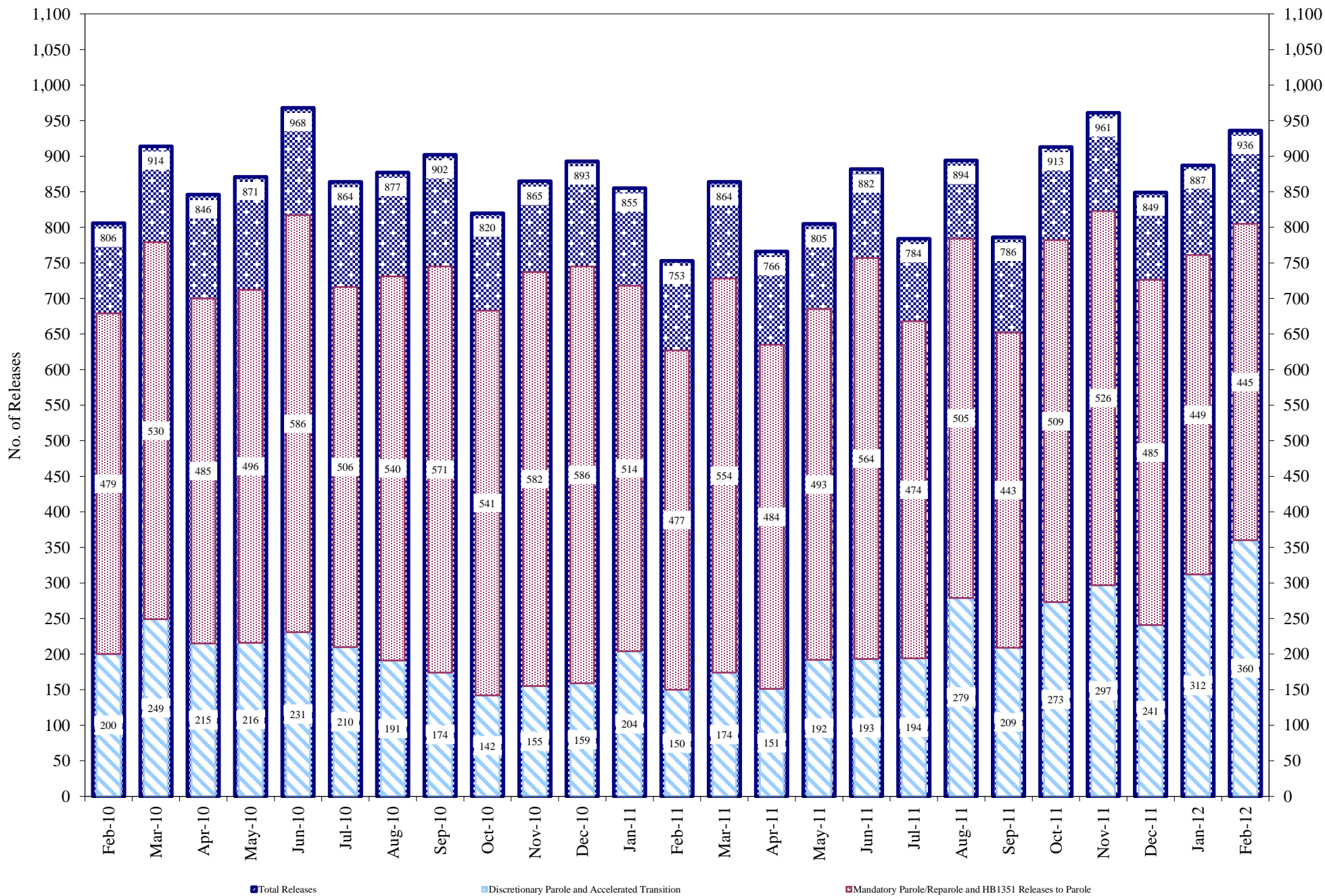
Female Population Only

	Parole ⁽¹⁾							Discharge			Other				Total
	Discretionary	Mandatory	Wknd. Mand.	Mand. Repar.	Wknd. Mand. Repar.	HB 1351 Early	Accel Trans	Sentence ⁽²⁾	Martin/Cooper	Chgs/Det.	Probation	Ct. Ord. Dsch.	Appeal Bond	Deceased	
Feb-12	56	7	12	16	9	8	0	9	0	1	1	0	0	0	119
Jan-12	57	11	4	15	10	4	0	9	0	4	2	0	0	0	116
Dec-11	35	9	9	11	15	13	0	6	0	0	1	3	0	0	102
Nov-11	41	15	11	12	6	12	0	22	0	1	1	0	0	0	121
Oct-11	46	7	14	17	8	8	0	16	0	1	2	0	0	0	119
Sep-11	37	8	10	13	10	8	0	8	0	0	3	0	0	0	97
Aug-11	37	13	6	17	10	8	0	8	0	1	1	1	0	0	102
Jul-11	28	15	11	18	7	12	0	10	0	2	1	0	0	0	104
FY 2012-Avg.	42	11	10	15	9	9	0	11	0	1	2	1	0	0	110
FY 2011-Avg.	29	13	9	16	9	12	0	11	0	1	1	1	0	0	102
FY 2010-Avg.	46	13	14	14	11	7	N/A	10	0	0	1	1	0	0	117
FY 2009-Avg.	49	21	10	13	4	N/A	N/A	10	0	2	2	1	0	0	112
FY 2008-Avg.	69	24	N/A	12	N/A	N/A	N/A	9	0	2	2	2	0	0	120
FY 2007-Avg.	63	23	N/A	11	N/A	N/A	N/A	8	0	1	2	1	0	0	109
FY 2006-Avg.	39	34	N/A	14	N/A	N/A	N/A	8	0	1	2	1	0	0	99

Definitions of Release Types

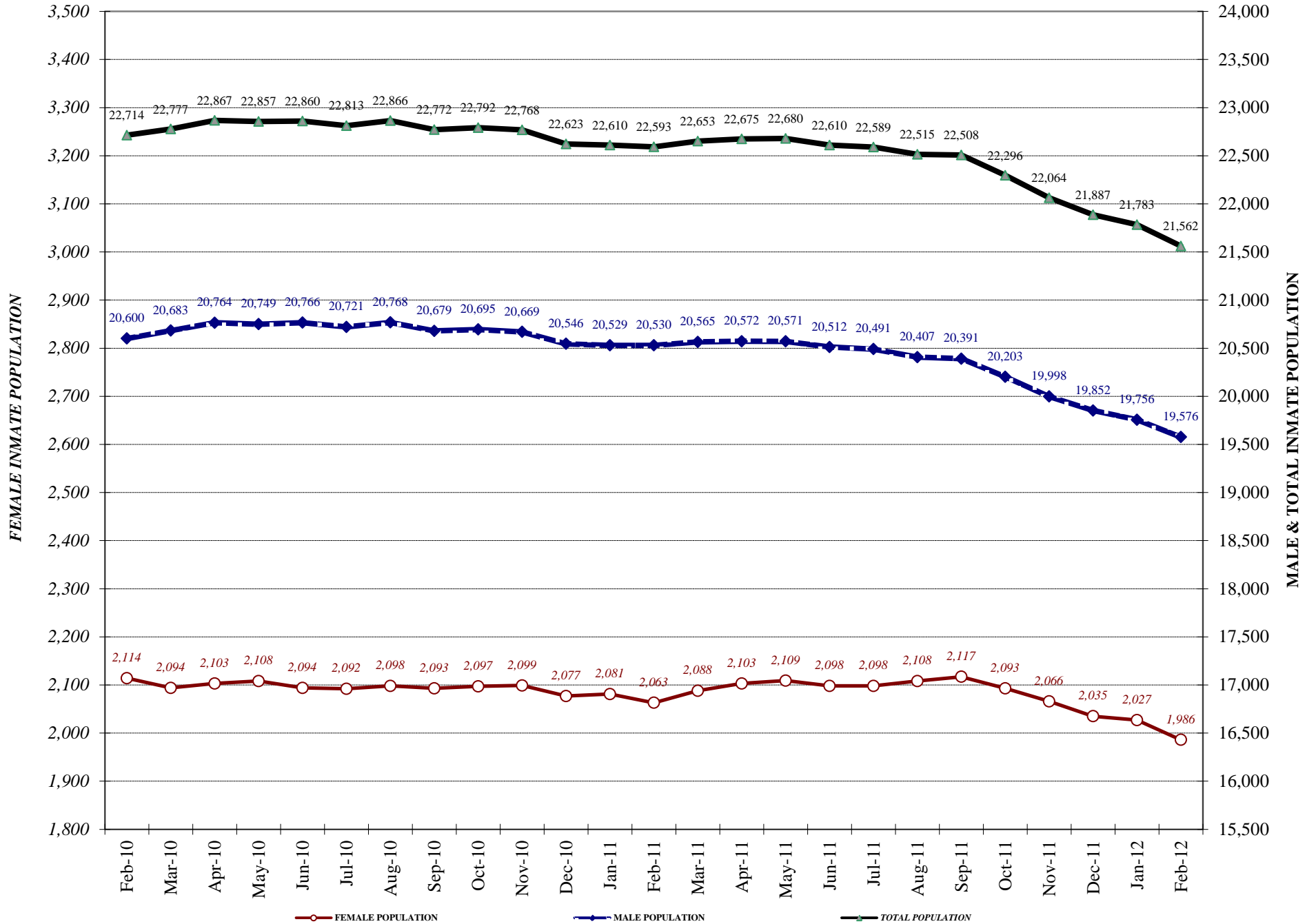
See previous page.

COLORADO DEPARTMENT OF CORRECTIONS Adult Prison Releases

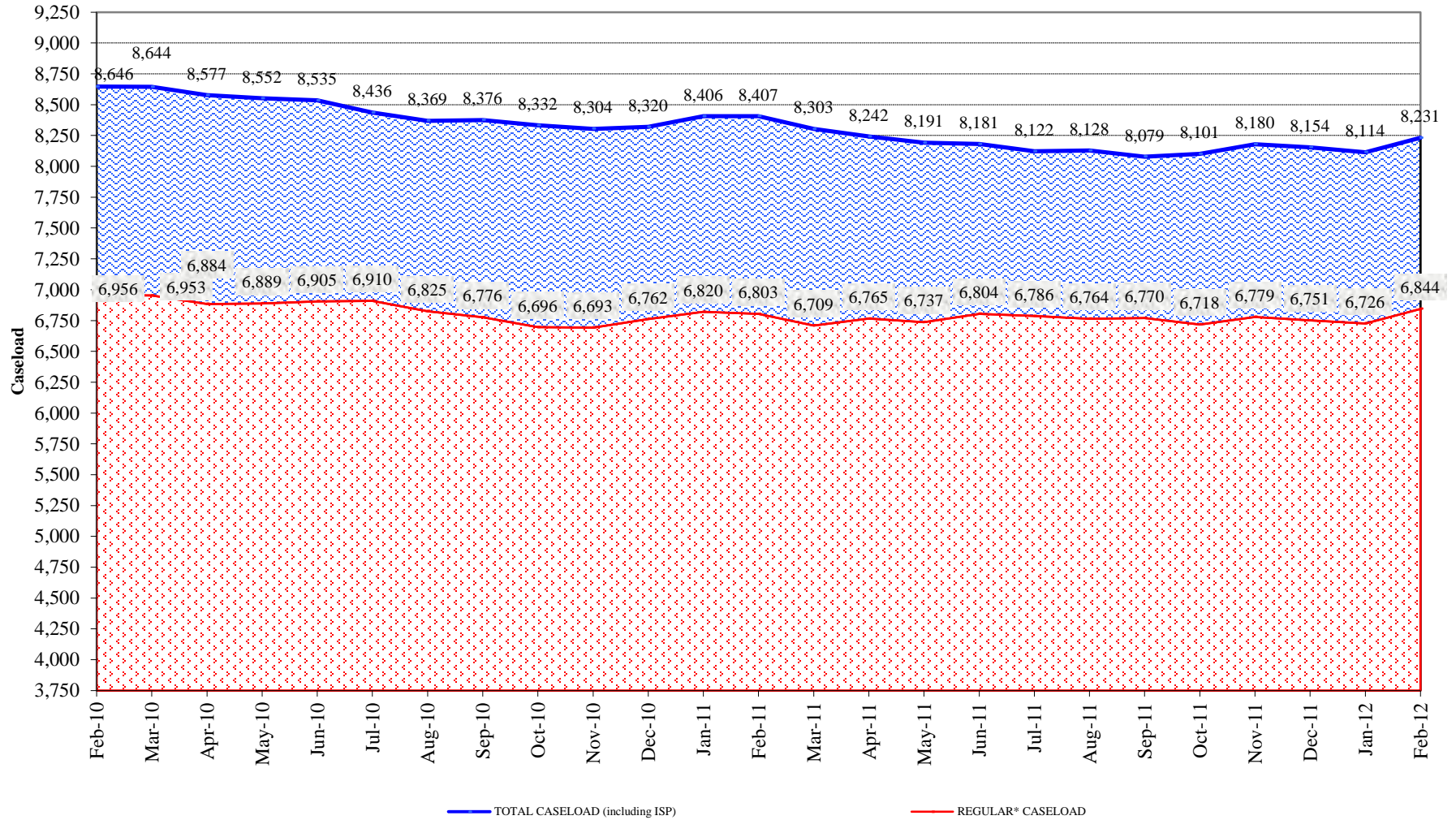


.Total releases include releases to discretionary parole and accelerated transition, mandatory parole/reparole and HB1351, all types of discharges and other releases as detailed on the previous two pages

COLORADO DEPARTMENT OF CORRECTIONS Adult Jurisdictional Inmate Population



COLORADO DEPARTMENT OF CORRECTIONS Parole Population



* Regular caseload includes interstate parole, but excludes out-of-state parolees and absconders.