

**COLORADO DEPARTMENT OF CORRECTIONS
MONTHLY POPULATION AND CAPACITY REPORT
as of January 31, 2012**

2-Feb-12

	1/31/12 OPERATIONAL CAPACITY ⁽¹⁾	----- 1/31/12 -----			----- 1/31/11 -----	
		ON-GRDS POPULATION	OFF-GRDS POPULATION	TOTAL POPULATION	OPERATIONAL CAPACITY ⁽¹⁾	ON-GRDS POPULATION
COLO STATE PENITENTIARY	756	678	2	680	756	735
CENTENNIAL CORR FAC	652	627	3	630	652	579
STERLING CORR FAC	2,545	2,390	17	2,407	2,545	2,467
LIMON CORR FAC	898	887	4	891	951	942
ARK VALLEY CORR FAC	1,007	999	9	1,008	1,007	995
BUENA VISTA CORR FAC	920	906	10	916	920	911
BUENA VISTA MIN CTR	304	300	2	302	292	279
COLO TERR CORR FAC	928	915	10	925	936	901
FORT LYON CORR FAC	134	134	3	137	500	478
FREMONT CORR FAC	1,661	1,651	12	1,663	1,661	1,633
LA VISTA CORR FAC	589	556	8	564	549	532
ARROWHEAD CORR CTR	524	511	4	515	494	489
FOUR MILE CORR CTR	525	522	2	524	499	496
TRINIDAD CORR FAC	484	465	3	468	484	475
SKYLINE CORR CTR	249	247	1	248	249	248
COLORADO CORR CTR	150	135	1	136	150	150
DELTA CORR CTR	484	457	4	461	484	476
RIFLE CORR CTR	192	192	1	193	192	186
DENVER WOMEN'S CORR FAC	976	967	9	976	976	958
DENVER REC DIAG CTR	542	560	13	573	480	459
SAN CARLOS CORR FAC	255	244	5	249	255	247
SUBTOTAL	14,775	14,343	123	14,466	15,032	14,636
CONTRACTS:						
BENT COUNTY CORR CTR		1,257	27	1,284		1,295
CROWLEY COUNTY CORR FAC		1,493	19	1,512		1,583
KIT CARSON COUNTY CORR FAC		735	11	746		788
CHEYENNE MTN REENTRY CTR		627	6	633		671
SUBTOTAL		4,112	63	4,175		4,337
OFF-GROUNDS POPULATION:						
ESCAPEES/WALKAWAYS			186	186		225
REVOCATIONS-JAIL				220		221
REVOCATIONS-JAIL				0		0
JAIL BACKLOG:						
BACKLOG LESS THAN 72 HOURS			44	44	29	
BACKLOG GREATER THAN 72 HOURS (FISCAL YTD AVE =75)			36	36	63	
BACKLOG-PAROLEES AWAITING TRANSFER			43	43	33	
TOTAL JAIL BACKLOG			123	123		125
COUNTY JAIL CONTRACTS			36	36		26
COMMUNITY CENTERS						
PAROLE REVOCATIONS		1,583	103	1,686		1,726
REVOKED-RET TO CUST		0	1	1		2
REVOKED-RET TO CUST		233	84	317		308
REGRESSIONS			18	18		203
TOTAL COMM. CENTERS		1,816	206	2,022		2,239
ISP-INMATE						
REGRESSIONS		715	22	737		789
REGRESSIONS			4	4		12
TOTAL ISP-INMATE		715	26	741		801
TOTAL COMM. CORRECTIONS		2,531	232	2,763		3,040
MALE POPULATION				19,756		20,529
FEMALE POPULATION				2,027		2,081
TOTAL INMATE JURISDICTIONAL POPULATION				21,783		22,610

⁽¹⁾OPERATIONAL CAPACITY INCLUDES ALL BEDS AVAILABLE FOR USE, INCLUDING MANAGEMENT CONTROL UNITS, BUT EXCLUDES EMERGENCY DOUBLE BUNKING.

CURRENT MONTH CHANGES IN CAPACITY:

Fort Lyon Correctional Facility

Decommissioning of beds

-60 beds

COLORADO DEPARTMENT OF CORRECTIONS
MONTHLY POPULATION AND CAPACITY REPORT
as of January 31, 2012

2-Feb-12

NET MONTHLY GROWTH RATE:

CURRENT MONTH	-104
FISCAL YEAR-TO-DATE AVERAGE	-118

YOUTHFUL OFFENDER SYSTEM

	----- 1/31/12 -----			1/31/11
	PUEBLO	COMM. CORR.	TOTAL POPULATION	TOTAL POPULATION
INTAKE/IDO	5		5	10
RFP/REMEDATION	13		13	24
PHASE I	181		181	179
PHASE II	13		13	10
PHASE III		47	47	45
OFF GROUNDS/BACKLOG			9	9
TOTAL Y.O.S. POPULATION	212	47	268	277

	CURRENT MONTH	FISCAL YR. TO DATE
YOS ADMISSIONS	5	47
YOS RELEASES:		
COMPLETION OF SENTENCE	5	30
JUDICIAL RELEASE TO PROB/CT ORD DISCHG	1	3
JUDICIAL TRANSFER TO DOC	0	0
TERMINATION/FAILURE	2	12
DECEASED	0	0
TOTAL RELEASES	8	45

PAROLE CASELOAD

	----- 1/31/12 -----			----- 12/31/11 -----		----- 1/31/11 -----	
	DOMESTIC	INTERST PAR/PROB	TOTAL CASELOAD	DOMESTIC	TOTAL CASELOAD	DOMESTIC	TOTAL CASELOAD
DENVER REGION							
REGULAR	2,582	80	2,662	2,617	2,699	2,500	2,584
ISP	<u>536</u>		<u>536</u>	<u>543</u>	<u>543</u>	<u>713</u>	<u>713</u>
SUBTOTAL	<u>3,118</u>	<u>80</u>	<u>3,198</u>	<u>3,160</u>	<u>3,242</u>	<u>3,213</u>	<u>3,297</u>
NORTHEAST REGION							
REGULAR	1,907	80	1,987	1,897	1,980	1,885	1,975
ISP	<u>387</u>		<u>387</u>	<u>392</u>	<u>392</u>	<u>365</u>	<u>365</u>
SUBTOTAL	<u>2,294</u>	<u>80</u>	<u>2,374</u>	<u>2,289</u>	<u>2,372</u>	<u>2,250</u>	<u>2,340</u>
SOUTHEAST REGION							
REGULAR	1,400	84	1,484	1,402	1,485	1,569	1,648
ISP	354		<u>354</u>	<u>347</u>	<u>347</u>	<u>357</u>	<u>357</u>
SUBTOTAL	<u>1,754</u>	<u>84</u>	<u>1,838</u>	<u>1,749</u>	<u>1,832</u>	<u>1,926</u>	<u>2,005</u>
WESTERN REGION							
REGULAR	560	33	593	552	587	562	613
ISP	111		<u>111</u>	<u>121</u>	<u>121</u>	<u>151</u>	<u>151</u>
SUBTOTAL	<u>671</u>	<u>33</u>	<u>704</u>	<u>673</u>	<u>708</u>	<u>713</u>	<u>764</u>
TOTAL CASELOAD							
REGULAR	6,449	277	6,726	6,468	6,751	6,516	6,820
ISP	<u>1,388</u>		<u>1,388</u>	<u>1,403</u>	<u>1,403</u>	<u>1,586</u>	<u>1,586</u>
TOTAL	<u>7,837</u>	<u>277</u>	<u>8,114</u>	<u>7,871</u>	<u>8,154</u>	<u>8,102</u>	<u>8,406</u>
ADDITIONAL CASELOAD:							
OUT-OF-STATE PAROLEES			1,910		1,971		1,990
PAROLEE ABSCONDERS			666		650		679

**COLORADO DEPARTMENT OF CORRECTIONS
MONTHLY POPULATION AND CAPACITY REPORT
as of January 31, 2012**

		----- FINAL CUSTODY DESIGNATION -----							
		Uncls.	Ad.Seg	Close	Medium	Min.-Res.	Minimum	Total	
Male Population	COLO STATE PENITENTIARY		666	10		4		680	
	CENTENNIAL CORR FAC		313	314	2	1		630	
	STERLING CORR FAC		105	699	386	757	460	2,407	
	LIMON CORR FAC		3	711	141	28	8	891	
	ARK VALLEY CORR FAC			444	244	193	127	1,008	
	BUENA VISTA CORR FAC			482	310	86	38	916	
	BUENA VISTA MIN CTR					204	98	302	
	COLO TERR CORR FAC		1	207	301	258	158	925	
	FORT LYON CORR FAC			1	7	106	23	137	
	FREMONT CORR FAC			296	449	471	447	1,663	
	LA VISTA CORR FAC			8	13	35	15	71	
	ARROWHEAD CORR CTR					335	180	515	
	FOUR MILE CORR CTR					356	168	524	
	TRINIDAD CORR FAC				2	408	58	468	
	SKYLINE CORR CTR					5	243	248	
	COLORADO CORR CTR					2	134	136	
	DELTA CORR CTR					2	459	461	
	RIFLE CORR CTR						193	193	
	DENVER REC DIAG CTR		113	2	66	171	149	69	570
	SAN CARLOS CORR FAC			24	100	50	50	25	249
	CONTRACTS:								
	BENT COUNTY CORR CTR				2	767	342	173	1,284
	CROWLEY COUNTY CORR FAC					896	361	255	1,512
	KIT CARSON COUNTY CORR FAC				6	455	184	101	746
	CHEYENNE MTN REENTRY CTR				1	227	303	102	633
	COMMUNITY/ISP				11	45	47	1927	2,030
	Total Classified Male Population		113	1,114	3,358	4,466	4,687	5,461	19,199
Percent of Total		0.6%	5.8%	17.5%	23.3%	24.4%	28.4%		
Unclassified Facilities:									
JAIL BACKLOG/REVOCATIONS								91	
COUNTY JAIL CONTRACTS								0	
REVOKED TO JAIL								0	
REVOKED TO COMM CTR								1	
REVOKED-RET TO CUST FAC (57 off-grounds)								253	
COMM/ISP REGRESSIONS								22	
ESCAPEES/WALKAWAYS								190	
Total Unclassified Facilities								557	
Total Male Population								19,756	
Female Population	DENVER WOMEN'S CORR FAC	14	24	197	172	306	263	976	
	LA VISTA CORR FAC			62	76	194	161	493	
	DENVER REC DIAG CTR INF				1	1	1	3	
	COLO TERR CORR FAC INF.							0	
	COMMUNITY/ISP			3	6	16	368	393	
	Total Classified Female Population	14	24	262	255	517	793	1,865	
	Percent of Total	0.8%	1.3%	14.0%	13.7%	27.7%	42.5%		
	Unclassified Facilities:								
	JAIL BACKLOG/REVOCATIONS								32
	COUNTY JAIL CONTRACTS								36
	REVOKED TO JAIL								0
	REVOKED TO COMM CTR								0
	REVOKED-RET TO CUST FAC (27 off-grounds)								64
COMM/ISP REGRESSIONS								0	
ESCAPEES/WALKAWAYS								30	
Total Unclassified Facilities								162	
Total Female Population								2,027	
Total Classified Population		127	1,138	3,620	4,721	5,204	6,254	21,064	
Percent of Total		0.6%	5.4%	17.2%	22.4%	24.7%	29.7%		

COLORADO DEPARTMENT OF CORRECTIONS
ADULT INMATE JURISDICTIONAL POPULATION ⁽¹⁾

DATE: 2/2/2012

DATE	MALE POPULATION			FEMALE POPULATION			TOTAL POPULATION		
	Male Population	Net Change	Fiscal Y-T-D Average	Female Population	Net Change	Fiscal Y-T-D Average	Total Population	Net Change	Fiscal Y-T-D Average
01-31-12	19,756	-96		2,027	-8		21,783	-104	
12-31-11	19,852	-146		2,035	-31		21,887	-177	
11-30-11	19,998	-205		2,066	-27		22,064	-232	
10-31-11	20,203	-188	-108	2,093	-24	-10	22,296	-212	-118
09-30-11	20,391	-16		2,117	9		22,508	-7	
08-31-11	20,407	-84		2,108	10		22,515	-74	
07-31-11	20,491	-21		2,098	0		22,589	-21	
06-30-11	20,512	-59		2,098	-11		22,610	-70	
05-31-11	20,571	-1		2,109	6		22,680	5	
04-30-11	20,572	7		2,103	15		22,675	22	
03-31-11	20,565	35		2,088	25		22,653	60	
02-28-11	20,530	1		2,063	-18		22,593	-17	
01-31-11	20,529	-17		2,081	4		22,610	-13	
12-31-10	20,546	-123	-21	2,077	-22	0	22,623	-145	-21
11-30-10	20,669	-26		2,099	2		22,768	-24	
10-31-10	20,695	16		2,097	4		22,792	20	
09-30-10	20,679	-89		2,093	-5		22,772	-94	
08-31-10	20,768	47		2,098	6		22,866	53	
07-31-10	20,721	-45		2,092	-2		22,813	-47	
06-30-10	20,766	17		2,094	-14		22,860	3	
05-31-10	20,749	-15		2,108	5		22,857	-10	
04-30-10	20,764	81		2,103	9		22,867	90	
03-31-10	20,683	83		2,094	-20		22,777	63	
02-28-10	20,600	48		2,114	-8		22,714	40	
01-31-10	20,552	29		2,122	-16		22,674	13	
12-31-09	20,523	-22	-11	2,138	-13	-16	22,661	-35	-27
11-30-09	20,545	-176		2,151	-50		22,696	-226	
10-31-09	20,721	-179		2,201	-21		22,922	-200	
09-30-09	20,900	-13		2,222	-43		23,122	-56	
08-31-09	20,913	-15		2,265	-27		23,178	-42	
07-31-09	20,928	32		2,292	2		23,220	34	
06-30-09	20,896		16	2,290		-1	23,186		15
06-30-08	20,684		42	2,305		-3	22,989		39
06-30-07	20,178		32	2,341		10	22,519		42
06-30-06	19,792		97	2,220		12	22,012		109
06-30-05	18,631		68	2,073		27	20,704		95
06-30-04	17,814		49	1,755		11	19,569		60
06-30-03	17,226		57	1,620		10	18,846		67
06-30-02	16,539		87	1,506		14	18,045		101
06-30-01	15,493		63	1,340		6	16,833		70
06-30-00	14,733		99	1,266		7	15,999		106
06-30-99	13,547		75	1,179		14	14,726		89
06-30-98	12,647			1,016			13,663		

⁽¹⁾ Adult inmate jurisdictional population includes on-grounds, off-grounds, out-of-state, escapees, and jail backlog and excludes offenders sentenced to the Youthful Offender System (YOS).

COLORADO DEPARTMENT OF CORRECTIONS
ADULT INMATE RELEASES FROM PRISON
TOTAL Population (Male and Female)

2/2/2012

	Parole ⁽¹⁾							Discharge			Other				Total
	Discretionary	Mandatory	Wknd. Mand.	Mand. Repar.	Wknd. Mand. Repar.	HB 1351 Early	Accl Trans	Sentence ⁽²⁾	Martin/Cooper	Chgs/Det.	Probation	Ct. Ord. Dsch.	Appeal Bond	Deceased	
Jan-12	312	116	98	97	68	70	0	87	3	21	5	8	0	3	888
Dec-11	241	109	101	114	100	61	0	92	2	8	11	5	0	5	849
Nov-11	297	136	106	125	75	84	0	105	5	12	8	4	0	4	961
Oct-11	273	135	108	113	84	69	0	98	2	16	13	1	0	0	912
Sep-11	209	108	104	92	65	74	0	100	1	14	10	4	0	3	784
Aug-11	279	123	100	133	64	85	0	87	2	13	4	3	0	1	894
Jul-11	194	109	99	135	56	75	0	80	3	19	5	5	0	3	783
FY 2012-Avg	258	119	102	116	73	74	N/A	93	3	15	8	4	0	3	867
FY 2011-Avg	175	138	107	126	76	87	0	100	2	16	8	5	0	5	846
FY 2010-Avg	237	141	121	119	87	46	N/A	101	3	14	10	8	0	4	913
FY 2009-Avg	343	188	N/A	93	N/A	N/A	N/A	97	5	17	12	10	0	4	898
FY 2008-Avg	466	186	N/A	88	N/A	N/A	N/A	90	8	17	12	11	0	4	881
FY 2007-Avg	422	198	N/A	89	N/A	N/A	N/A	81	10	16	13	9	0	4	843
FY 2006-Avg	234	266	N/A	98	N/A	N/A	N/A	88	13	15	16	10	0	5	746

Definitions of Release Types

Discretionary parole-Released to parole through Parole Board discretion prior to mandatory release or sentence discharge date.

Mandatory parole-Released to parole on mandatory release date.

Wknd Mand.-Mandatory releases scheduled to release on a weekend; released a few days early under Parole Board authority.

Mand. Repar-Reparoled on specific date set by Parole Board (includes S.B. 252 reparoles). n/a - breakout not available prior to June 2004.

Wknd Mand. Repar.-Mandatory Reparole releases scheduled to release on a weekend; released a few days early under Parole Board authority.

HB 1351 Early - Released to parole, subject to earn time provisions of H.B. 09-1351.

Accl Trans - Accelerated Transition released to parole prior to mandatory release by parole board based on program eligibility criteria.

Sentence discharge-Completion of sentence with no further supervision.

Martin/ Cooper discharge-Completion of sentence with no further supervision, sex offender subject to Martin/Cooper Supreme Court decision.

Chgs/ Det. discharge-Completion of sentence, released to other law enforcement for pending charges or detainees.

Probation-Released by court to probation.

Ct. Ord. Dsch.-Released by court order.

Appeal Bond-Released by court to appeal bond.

Deceased-Offender death in prison.

⁽¹⁾Due to the decrease in community transportation services, the Department implemented a procedural change in December 2005 with regards to releasing inmates on weekends. As a result, discretionary releases increased and mandatory releases decreased. However, beginning December 2008, the implementation of a new electronic coding system enabled these releases to be correctly classified as weekend mandatory parole and mandatory reparole releases.

⁽²⁾Sentence is now a combination of Sentence and HB 1087 due to legislation passed in 2009.

COLORADO DEPARTMENT OF CORRECTIONS
ADULT INMATE RELEASES FROM PRISON

2/2/2012

Male Population Only

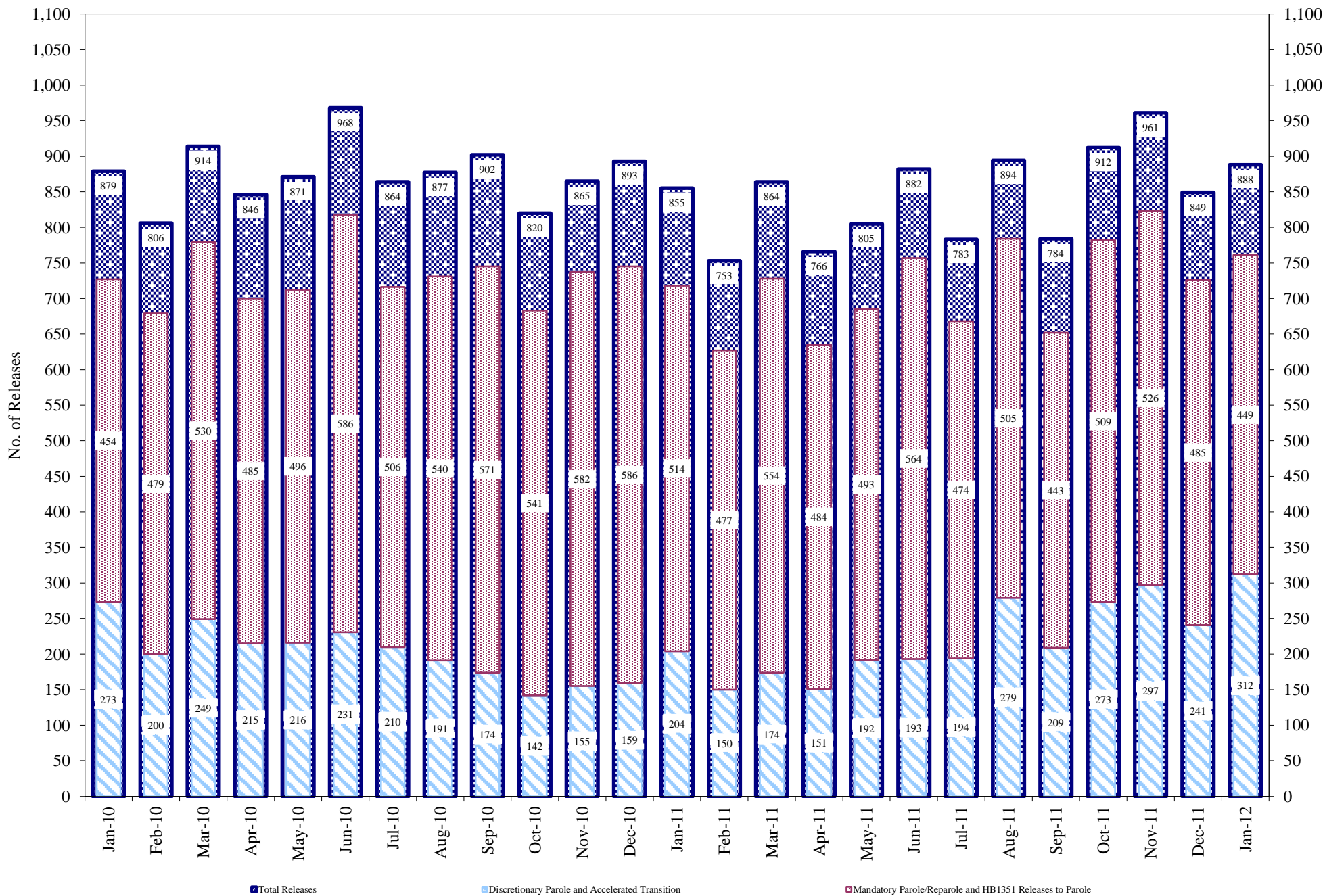
	Parole ⁽¹⁾							Discharge			Other				Total
	Discretionary	Mandatory	Wknd. Mand.	Mand. Repar.	Wknd. Mand. Repar.	HB 1351 Early	Accel Trans	Sentence ⁽²⁾	Martin/Cooper	Chgs/Det.	Probation	Ct. Ord. Dsch.	Appeal Bond	Deceased	
Jan-12	255	105	94	82	58	66	0	78	3	17	3	8	0	3	772
Dec-11	206	100	92	103	85	48	0	86	2	8	9	2	0	5	746
Nov-11	256	121	95	113	69	72	0	83	5	11	7	4	0	4	840
Oct-11	227	128	94	96	76	61	0	82	2	15	11	1	0	0	793
Sep-11	172	100	94	79	55	66	0	92	1	14	7	4	0	3	687
Aug-11	242	110	94	116	54	77	0	79	2	12	3	2	0	1	792
Jul-11	166	94	88	117	49	63	0	70	3	17	4	5	0	3	679
FY 2012-Avg.	218	108	93	101	64	65	0	81	3	13	6	4	0	3	758
FY 2011-Avg.	146	125	98	110	67	76	0	89	2	15	7	5	0	4	744
FY 2010-Avg.	196	129	108	104	76	39	N/A	33	3	13	9	7	0	4	797
FY 2009-Avg.	294	167	N/A	80	N/A	N/A	N/A	31	5	15	10	9	0	4	786
FY 2008-Avg.	397	162	N/A	76	N/A	N/A	N/A	32	8	16	10	9	0	4	762
FY 2007-Avg.	359	175	N/A	77	N/A	N/A	N/A	29	9	15	11	8	0	4	733
FY 2006-Avg.	196	233	N/A	84	N/A	N/A	N/A	35	13	14	15	9	0	5	648

Female Population Only

	Parole ⁽¹⁾							Discharge			Other				Total
	Discretionary	Mandatory	Wknd. Mand.	Mand. Repar.	Wknd. Mand. Repar.	HB 1351 Early	Accel Trans	Sentence ⁽²⁾	Martin/Cooper	Chgs/Det.	Probation	Ct. Ord. Dsch.	Appeal Bond	Deceased	
Jan-12	57	11	4	15	10	4	0	9	0	4	2	0	0	0	116
Dec-11	35	9	9	11	15	13	0	6	0	0	2	3	0	0	103
Nov-11	41	15	11	12	6	12	0	22	0	1	1	0	0	0	121
Oct-11	46	7	14	17	8	8	0	16	0	1	2	0	0	0	119
Sep-11	37	8	10	13	10	8	0	8	0	0	3	0	0	0	97
Aug-11	37	13	6	17	10	8	0	8	0	1	1	1	0	0	102
Jul-11	28	15	11	18	7	12	0	10	0	2	1	0	0	0	104
FY 2012-Avg.	40	11	9	15	9	9	0	11	0	1	2	1	0	0	109
FY 2011-Avg.	28	13	9	16	9	12	0	11	0	1	1	1	0	0	101
FY 2010-Avg.	41	13	13	14	10	7	N/A	3	0	1	1	1	0	0	117
FY 2009-Avg.	49	21	N/A	13	N/A	N/A	N/A	3	0	2	2	1	0	0	112
FY 2008-Avg.	69	23	N/A	12	N/A	N/A	N/A	2	0	2	2	2	0	0	119
FY 2007-Avg.	63	23	N/A	11	N/A	N/A	N/A	2	0	1	2	1	0	0	109
FY 2006-Avg.	39	34	N/A	14	N/A	N/A	N/A	3	0	1	2	1	0	0	98

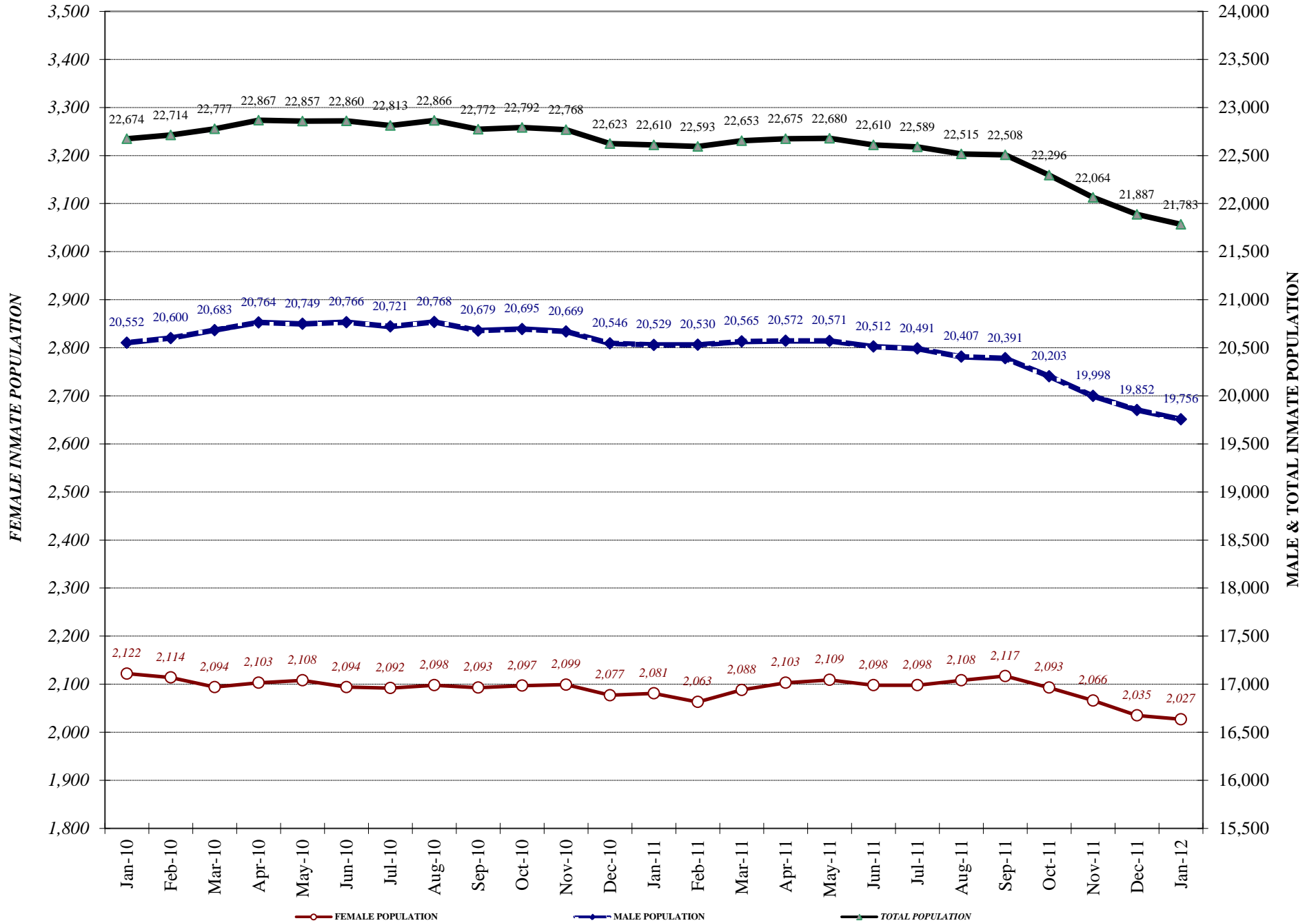
Definitions of Release Types
See previous page.

COLORADO DEPARTMENT OF CORRECTIONS Adult Prison Releases

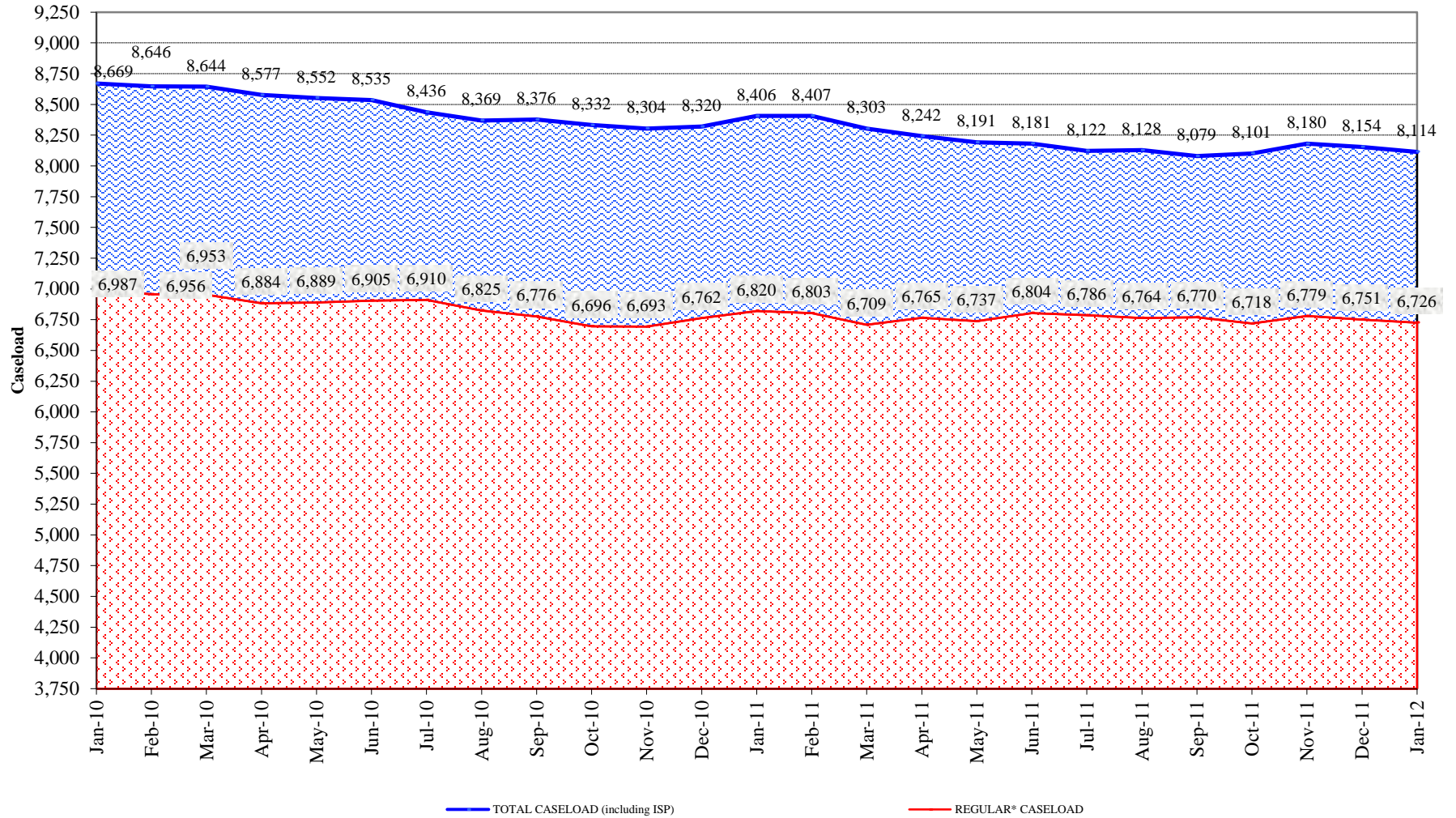


.Total releases include releases to discretionary parole and accelerated transition, mandatory parole/reparole and HB1351, all types of discharges and other releases as detailed on the previous two pages

COLORADO DEPARTMENT OF CORRECTIONS Adult Jurisdictional Inmate Population



COLORADO DEPARTMENT OF CORRECTIONS Parole Population



* Regular caseload includes interstate parole, but excludes out-of-state parolees and absconders.