

**COLORADO DEPARTMENT OF CORRECTIONS
MONTHLY POPULATION AND CAPACITY REPORT
as of November 30, 2011**

6-Dec-11

	11/30/11 OPERATIONAL CAPACITY ⁽¹⁾	----- 11/30/11 -----			----- 11/30/10 -----	
		ON-GRDS POPULATION	OFF-GRDS POPULATION	TOTAL POPULATION	OPERATIONAL CAPACITY ⁽¹⁾	ON-GRDS POPULATION
COLO STATE PENITENTIARY	756	742	2	744	756	739
CENTENNIAL CORR FAC	652	581	5	586	652	543
STERLING CORR FAC	2,545	2,423	20	2,443	2,545	2,467
LIMON CORR FAC	898	891	5	896	951	943
ARK VALLEY CORR FAC	1,007	1,000	9	1,009	1,007	996
BUENA VISTA CORR FAC	920	908	18	926	920	906
BUENA VISTA MIN CTR	304	296	0	296	292	285
COLO TERR CORR FAC	936	891	12	903	936	921
FORT LYON CORR FAC	500	182	5	187	500	487
FREMONT CORR FAC	1,661	1,637	8	1,645	1,661	1,641
LA VISTA CORR FAC	589	555	8	563	549	532
ARROWHEAD CORR CTR	524	496	4	500	494	490
FOUR MILE CORR CTR	525	522	3	525	499	495
TRINIDAD CORR FAC	484	475	3	478	484	474
SKYLINE CORR CTR	249	233	2	235	249	249
COLORADO CORR CTR	150	127	1	128	150	149
DELTA CORR CTR	484	365	1	366	484	464
RIFLE CORR CTR	192	189	1	190	192	186
DENVER WOMEN'S CORR FAC	976	949	6	955	976	954
DENVER REC DIAG CTR	542	485	17	502	480	466
SAN CARLOS CORR FAC	255	239	9	248	255	248
SUBTOTAL	15,149	14,186	139	14,325	15,032	14,635
CONTRACTS:						
BENT COUNTY CORR CTR		1,324	27	1,351		1,372
CROWLEY COUNTY CORR FAC		1,592	19	1,611		1,626
KIT CARSON COUNTY CORR FAC		809	11	820		814
CHEYENNE MTN REENTRY CTR		620	2	622		653
OFF-GROUNDS POPULATION:			198			225
ESCAPEES/WALKAWAYS				213		240
REVOCATIONS-JAIL				0		0
JAIL BACKLOG:						
BACKLOG LESS THAN 72 HOURS			40		53	
BACKLOG GREATER THAN 72 HOURS (FISCAL YTD AVE =75)			41		54	
BACKLOG-PAROLEES AWAITING TRANSFER			28		40	
TOTAL JAIL BACKLOG			109			147
COUNTY JAIL CONTRACTS			49			18
COMMUNITY CENTERS		1,640	133	1,773		1,760
PAROLE REVOCATIONS		0	0	0		0
REVOKED-RET TO CUST		235	110	345		352
REGRESSIONS			76	76		139
TOTAL COMM. CENTERS		1,875	319	2,194		2,251
ISP-INMATE		734	30	764		775
REGRESSIONS			6	6		12
TOTAL ISP-INMATE		734	36	770		787
TOTAL COMM. CORRECTIONS		2,609	355	2,964		3,038
MALE POPULATION				19,998		20,669
FEMALE POPULATION				2,066		2,099
TOTAL INMATE JURISDICTIONAL POPULATION				22,064		22,768

⁽¹⁾OPERATIONAL CAPACITY INCLUDES ALL BEDS AVAILABLE FOR USE, INCLUDING MANAGEMENT CONTROL UNITS, BUT EXCLUDES EMERGENCY DOUBLE BUNKING.

COLORADO DEPARTMENT OF CORRECTIONS
MONTHLY POPULATION AND CAPACITY REPORT
as of November 30, 2011

6-Dec-11

CURRENT MONTH CHANGES IN CAPACITY:

NET MONTHLY GROWTH RATE:

CURRENT MONTH	-232
FISCAL YEAR-TO-DATE AVERAGE	-109

YOUTHFUL OFFENDER SYSTEM

	----- 11/30/11 -----			11/30/10
	PUEBLO	COMM. CORR.	TOTAL POPULATION	TOTAL POPULATION
INTAKE/IDO	7		7	1
RFP/REMEDICATION	12		12	7
PHASE I	186		186	193
PHASE II	14		14	19
PHASE III		50	50	44
OFF GROUNDS/BACKLOG			11	9
TOTAL Y.O.S. POPULATION	219	50	280	273

	CURRENT MONTH	FISCAL YR. TO DATE
YOS ADMISSIONS	10	38
YOS RELEASES:		
COMPLETION OF SENTENCE	4	17
JUDICIAL RELEASE TO PROB/CT ORD DISCHG	0	1
JUDICIAL TRANSFER TO DOC	0	0
TERMINATION/FAILURE	2	7
DECEASED	0	0
TOTAL RELEASES	6	25

PAROLE CASELOAD

	----- 11/30/11 -----			----- 10/31/11 -----		----- 11/30/10 -----	
	DOMESTIC	INTERST PAR/PROB	TOTAL CASELOAD	DOMESTIC	TOTAL CASELOAD	DOMESTIC	TOTAL CASELOAD
DENVER REGION							
REGULAR	2,628	82	2,710	2,580	2,658	2,443	2,528
ISP	559		559	559	559	752	752
SUBTOTAL	3,187	82	3,269	3,139	3,217	3,195	3,280
NORTHEAST REGION							
REGULAR	1,877	83	1,960	1,871	1,956	1,780	1,878
ISP	387		387	373	373	391	391
SUBTOTAL	2,264	83	2,347	2,244	2,329	2,171	2,269
SOUTHEAST REGION							
REGULAR	1,454	82	1,536	1,450	1,531	1,597	1,674
ISP	337		337	330	330	326	326
SUBTOTAL	1,791	82	1,873	1,780	1,861	1,923	2,000
WESTERN REGION							
REGULAR	540	33	573	537	573	566	613
ISP	118		118	121	121	142	142
SUBTOTAL	658	33	691	658	694	708	755
TOTAL CASELOAD							
REGULAR	6,499	280	6,779	6,438	6,718	6,386	6,693
ISP	1,401		1,401	1,383	1,383	1,611	1,611
TOTAL	7,900	280	8,180	7,821	8,101	7,997	8,304
ADDITIONAL CASELOAD:							
OUT-OF-STATE PAROLEES			1,971		1,950		1,992
PAROLEE ABSCONDERS			651		629		716

**COLORADO DEPARTMENT OF CORRECTIONS
MONTHLY POPULATION AND CAPACITY REPORT**

as of November 30, 2011

		----- FINAL CUSTODY DESIGNATION -----						
		Uncls.	Ad.Seg	Close	Medium	Min.-Res.	Minimum	Total
Male Population	COLO STATE PENITENTIARY		713	30			1	744
	CENTENNIAL CORR FAC		382	199	4		1	586
	STERLING CORR FAC	1	144	627	404	792	475	2,443
	LIMON CORR FAC		6	680	153	42	15	896
	ARK VALLEY CORR FAC			429	246	191	143	1,009
	BUENA VISTA CORR FAC		3	473	323	89	38	926
	BUENA VISTA MIN CTR				1	187	108	296
	COLO TERR CORR FAC		1	198	317	243	144	903
	FORT LYON CORR FAC			1	3	142	41	187
	FREMONT CORR FAC		1	279	411	492	462	1,645
	LA VISTA CORR FAC			8	13	14	15	50
	S.T.U. LA VISTA				9	11	2	22
	ARROWHEAD CORR CTR				1	311	188	500
	FOUR MILE CORR CTR				2	365	158	525
	TRINIDAD CORR FAC				2	425	51	478
	SKYLINE CORR CTR					4	231	235
	COLORADO CORR CTR					1	127	128
	DELTA CORR CTR				1	1	364	366
	RIFLE CORR CTR					1	189	190
	DENVER REC DIAG CTR	109	4	82	122	127	53	497
	SAN CARLOS CORR FAC		23	92	48	50	35	248
	CONTRACTS:							
	BENT COUNTY CORR CTR			15	820	330	186	1,351
	CROWLEY COUNTY CORR FAC				935	431	245	1,611
	KIT CARSON COUNTY CORR FAC			13	499	201	107	820
	CHEYENNE MTN REENTRY CTR			1	188	317	116	622
	COMMUNITY/ISP			16	64	104	1938	2,122
	Total Classified Male Population	110	1,277	3,143	4,566	4,871	5,433	19,400
Percent of Total	0.6%	6.6%	16.2%	23.5%	25.1%	28.0%		
Unclassified Facilities:								
JAIL BACKLOG/REVOCATIONS							82	
COUNTY JAIL CONTRACTS							0	
REVOKED TO JAIL							0	
REVOKED TO COMM CTR							0	
REVOKED-RET TO CUST FAC (89 off-grounds)							286	
COMM/ISP REGRESSIONS							46	
ESCAPEES/WALKAWAYS							184	
Total Unclassified Facilities							598	
Total Male Population							19,998	
Female Population	DENVER WOMEN'S CORR FAC	17	26	206	152	320	234	955
	LA VISTA CORR FAC			59	79	181	172	491
	DENVER REC DIAG CTR INF					3	2	5
	COLO TERR CORR FAC INF.							0
	COMMUNITY/ISP			5	6	20	384	415
	Total Classified Female Population	17	26	270	237	524	792	1,866
	Percent of Total	0.9%	1.4%	14.5%	12.7%	28.1%	42.4%	
	Unclassified Facilities:							
	JAIL BACKLOG/REVOCATIONS							27
	COUNTY JAIL CONTRACTS							49
	REVOKED TO JAIL							0
	REVOKED TO COMM CTR							0
	REVOKED-RET TO CUST FAC (21 off-grounds)							59
	COMM/ISP REGRESSIONS							36
ESCAPEES/WALKAWAYS							29	
Total Unclassified Facilities							200	
Total Female Population							2,066	
Total Classified Population	127	1,303	3,413	4,803	5,395	6,225	21,266	
Percent of Total	0.6%	6.1%	16.0%	22.6%	25.4%	29.3%		

COLORADO DEPARTMENT OF CORRECTIONS
ADULT INMATE JURISDICTIONAL POPULATION ⁽¹⁾

DATE: 12/6/2011

DATE	MALE POPULATION			FEMALE POPULATION			TOTAL POPULATION		
	Male Population	Net Change	Fiscal Y-T-D Average	Female Population	Net Change	Fiscal Y-T-D Average	Total Population	Net Change	Fiscal Y-T-D Average
11-30-11	19,998	-205		2,066	-27		22,064	-232	
10-31-11	20,203	-188		2,093	-24		22,296	-212	
09-30-11	20,391	-16	-103	2,117	9	-6	22,508	-7	-109
08-31-11	20,407	-84		2,108	10		22,515	-74	
07-31-11	20,491	-21		2,098	0		22,589	-21	
06-30-11	20,512	-59		2,098	-11		22,610	-70	
05-31-11	20,571	-1		2,109	6		22,680	5	
04-30-11	20,572	7		2,103	15		22,675	22	
03-31-11	20,565	35		2,088	25		22,653	60	
02-28-11	20,530	1		2,063	-18		22,593	-17	
01-31-11	20,529	-17		2,081	4		22,610	-13	
12-31-10	20,546	-123	-21	2,077	-22	0	22,623	-145	-21
11-30-10	20,669	-26		2,099	2		22,768	-24	
10-31-10	20,695	16		2,097	4		22,792	20	
09-30-10	20,679	-89		2,093	-5		22,772	-94	
08-31-10	20,768	47		2,098	6		22,866	53	
07-31-10	20,721	-45		2,092	-2		22,813	-47	
06-30-10	20,766	17		2,094	-14		22,860	3	
05-31-10	20,749	-15		2,108	5		22,857	-10	
04-30-10	20,764	81		2,103	9		22,867	90	
03-31-10	20,683	83		2,094	-20		22,777	63	
02-28-10	20,600	48		2,114	-8		22,714	40	
01-31-10	20,552	29		2,122	-16		22,674	13	
12-31-09	20,523	-22	-11	2,138	-13	-16	22,661	-35	-27
11-30-09	20,545	-176		2,151	-50		22,696	-226	
10-31-09	20,721	-179		2,201	-21		22,922	-200	
09-30-09	20,900	-13		2,222	-43		23,122	-56	
08-31-09	20,913	-15		2,265	-27		23,178	-42	
07-31-09	20,928	32		2,292	2		23,220	34	
06-30-09	20,896		16	2,290		-1	23,186		15
06-30-08	20,684		42	2,305		-3	22,989		39
06-30-07	20,178		32	2,341		10	22,519		42
06-30-06	19,792		97	2,220		12	22,012		109
06-30-05	18,631		68	2,073		27	20,704		95
06-30-04	17,814		49	1,755		11	19,569		60
06-30-03	17,226		57	1,620		10	18,846		67
06-30-02	16,539		87	1,506		14	18,045		101
06-30-01	15,493		63	1,340		6	16,833		70
06-30-00	14,733		99	1,266		7	15,999		106
06-30-99	13,547		75	1,179		14	14,726		89
06-30-98	12,647			1,016			13,663		

⁽¹⁾ Adult inmate jurisdictional population includes on-grounds, off-grounds, out-of-state, escapees, and jail backlog and excludes offenders sentenced to the Youthful Offender System (YOS).

COLORADO DEPARTMENT OF CORRECTIONS
ADULT INMATE RELEASES FROM PRISON
TOTAL Population (Male and Female)

12/6/2011

	Parole ⁽¹⁾							Discharge			Other				Total
	Discretionary	Mandatory	Wknd. Mand.	Mand. Repar.	Wknd. Mand. Repar.	HB 1351 Early	Accl Trans	Sentence ⁽²⁾	Martin/Cooper	Chgs/Det.	Probation	Ct. Ord. Dsch.	Appeal Bond	Deceased	
Nov-11	297	136	106	125	75	84	0	105	5	12	8	4	0	4	961
Oct-11	273	135	108	113	84	69	0	98	2	16	13	1	0	0	912
Sep-11	209	108	104	92	65	74	0	100	1	14	10	4	0	3	784
Aug-11	279	123	100	133	64	85	0	87	2	13	4	3	0	1	894
Jul-11	194	109	99	135	56	75	0	80	3	19	5	5	0	3	783
FY 2012-Avg	250	122	103	120	69	77	N/A	94	3	15	8	3	0	2	867
FY 2011-Avg	175	138	107	126	76	87	0	100	2	16	8	5	0	5	846
FY 2010-Avg.	237	141	121	119	87	46	N/A	101	3	14	10	8	0	4	913
FY 2009-Avg.	343	188	N/A	93	N/A	N/A	N/A	97	5	17	12	10	0	4	898
FY 2008-Avg.	466	186	N/A	88	N/A	N/A	N/A	90	8	17	12	11	0	4	881
FY 2007-Avg.	422	198	N/A	89	N/A	N/A	N/A	81	10	16	13	9	0	4	843
FY 2006-Avg.	234	266	N/A	98	N/A	N/A	N/A	88	13	15	16	10	0	5	746

Definitions of Release Types

Discretionary parole-Released to parole through Parole Board discretion prior to mandatory release or sentence discharge date.

Mandatory parole-Released to parole on mandatory release date.

Wknd Mand.-Mandatory releases scheduled to release on a weekend; released a few days early under Parole Board authority.

Mand. Repar.-Reparoled on specific date set by Parole Board (includes S.B. 252 reparaes). n/a - breakout not available prior to June 2004.

Wknd Mand. Repar.-Mandatory Reparole releases scheduled to release on a weekend; released a few days early under Parole Board authority.

HB 1351 Early - Released to parole, subject to earn time provisions of H.B. 09-1351.

Accl Trans - Accelerated Transition released to parole prior to mandatory release by parole board based on program eligibility criteria.

Sentence discharge-Completion of sentence with no further supervision.

Martin/ Cooper discharge-Completion of sentence with no further supervision, sex offender subject to Martin/Cooper Supreme Court decision.

Chgs/ Det. discharge-Completion of sentence, released to other law enforcement for pending charges or detainees.

Probation-Released by court to probation.

Ct. Ord. Dsch.-Released by court order.

Appeal Bond-Released by court to appeal bond.

Deceased-Offender death in prison.

⁽¹⁾Due to the decrease in community transportation services, the Department implemented a procedural change in December 2005 with regards to releasing inmates on weekends. As a result, discretionary releases increased and mandatory releases decreased. However, beginning December 2008, the implementation of a new electronic coding system enabled these releases to be correctly classified as weekend mandatory parole and mandatory reparole releases.

⁽²⁾Sentence is now a combination of Sentence and HB 1087 due to legislation passed in 2009.

COLORADO DEPARTMENT OF CORRECTIONS
ADULT INMATE RELEASES FROM PRISON

12/6/2011

Male Population Only

	Parole ⁽¹⁾							Discharge			Other				Total
	Discretionary	Mandatory	Wknd. Mand.	Mand. Repar.	Wknd. Mand. Repar.	HB 1351 Early	Accel Trans	Sentence ⁽²⁾	Martin/Cooper	Chgs/Det.	Probation	Ct. Ord. Dsch.	Appeal Bond	Deceased	
Nov-11	256	121	95	113	69	72	0	83	5	11	7	4	0	4	840
Oct-11	227	128	94	96	76	61	0	82	2	15	11	1	0	0	793
Sep-11	172	100	94	79	55	66	0	92	1	14	7	4	0	3	687
Aug-11	242	110	94	116	54	77	0	79	2	12	3	2	0	1	792
Jul-11	166	94	88	117	49	63	0	70	3	17	4	5	0	3	679
FY 2012-Avg.	213	111	93	104	61	68	0	81	3	14	6	3	0	2	758
FY 2011-Avg.	146	125	98	110	67	76	0	89	2	15	7	5	0	4	744
FY 2010-Avg.	196	129	108	104	76	39	N/A	33	3	13	9	7	0	4	797
FY 2009-Avg.	294	167	N/A	80	N/A	N/A	N/A	31	5	15	10	9	0	4	786
FY 2008-Avg.	397	162	N/A	76	N/A	N/A	N/A	32	8	16	10	9	0	4	762
FY 2007-Avg.	359	175	N/A	77	N/A	N/A	N/A	29	9	15	11	8	0	4	733
FY 2006-Avg.	196	233	N/A	84	N/A	N/A	N/A	35	13	14	15	9	0	5	648

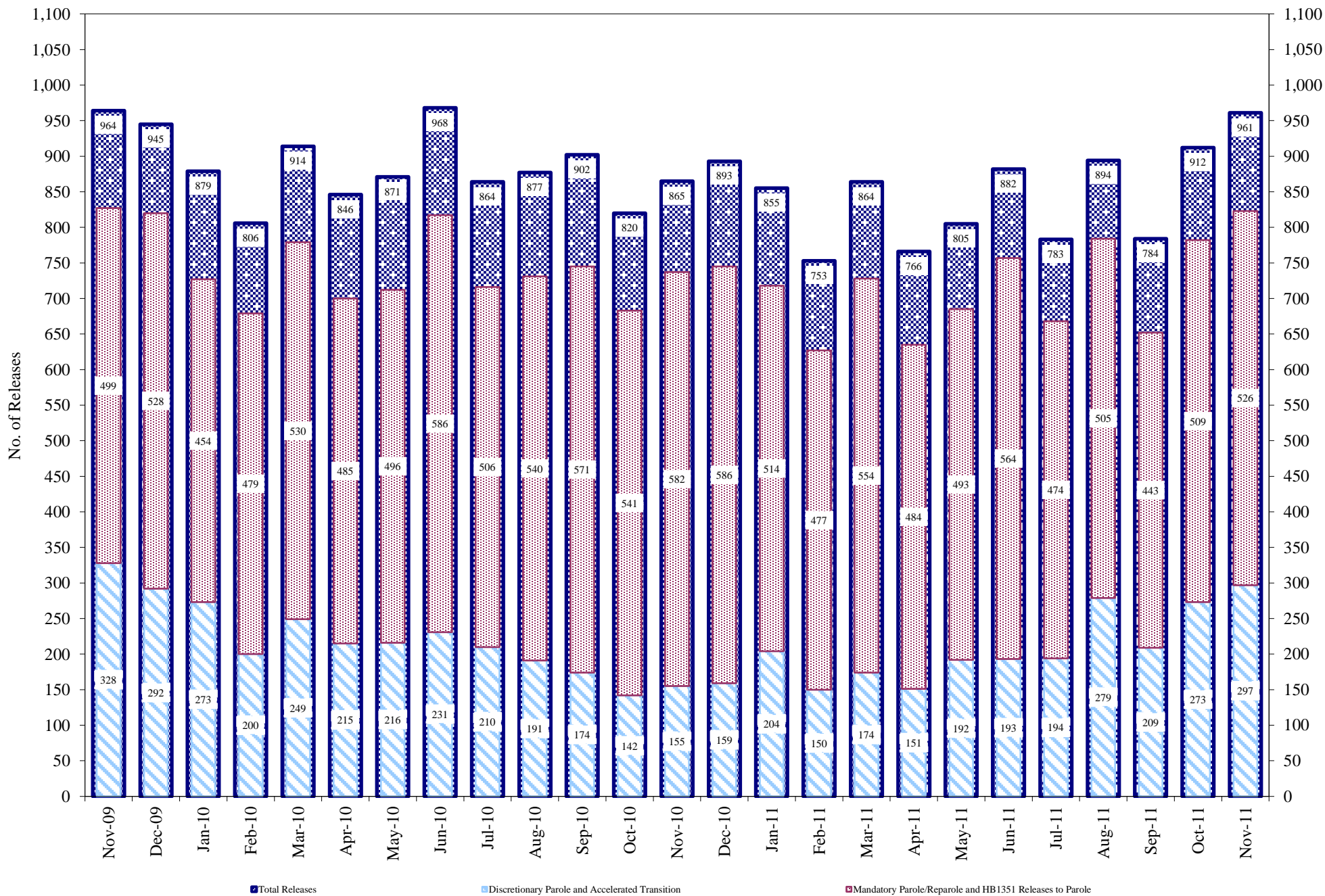
Female Population Only

	Parole ⁽¹⁾							Discharge			Other				Total
	Discretionary	Mandatory	Wknd. Mand.	Mand. Repar.	Wknd. Mand. Repar.	HB 1351 Early	Accel Trans	Sentence ⁽²⁾	Martin/Cooper	Chgs/Det.	Probation	Ct. Ord. Dsch.	Appeal Bond	Deceased	
Nov-11	41	15	11	12	6	12	0	22	0	1	1	0	0	0	121
Oct-11	46	7	14	17	8	8	0	16	0	1	2	0	0	0	119
Sep-11	37	8	10	13	10	8	0	8	0	0	3	0	0	0	97
Aug-11	37	13	6	17	10	8	0	8	0	1	1	1	0	0	102
Jul-11	28	15	11	18	7	12	0	10	0	2	1	0	0	0	104
FY 2012-Avg.	38	12	10	15	8	10	0	13	0	1	2	0	0	0	109
FY 2011-Avg.	28	13	9	16	9	12	0	11	0	1	1	1	0	0	101
FY 2010-Avg.	41	13	13	14	10	7	N/A	3	0	1	1	1	0	0	117
FY 2009-Avg.	49	21	N/A	13	N/A	N/A	N/A	3	0	2	2	1	0	0	112
FY 2008-Avg.	69	23	N/A	12	N/A	N/A	N/A	2	0	2	2	2	0	0	119
FY 2007-Avg.	63	23	N/A	11	N/A	N/A	N/A	2	0	1	2	1	0	0	109
FY 2006-Avg.	39	34	N/A	14	N/A	N/A	N/A	3	0	1	2	1	0	0	98

Definitions of Release Types

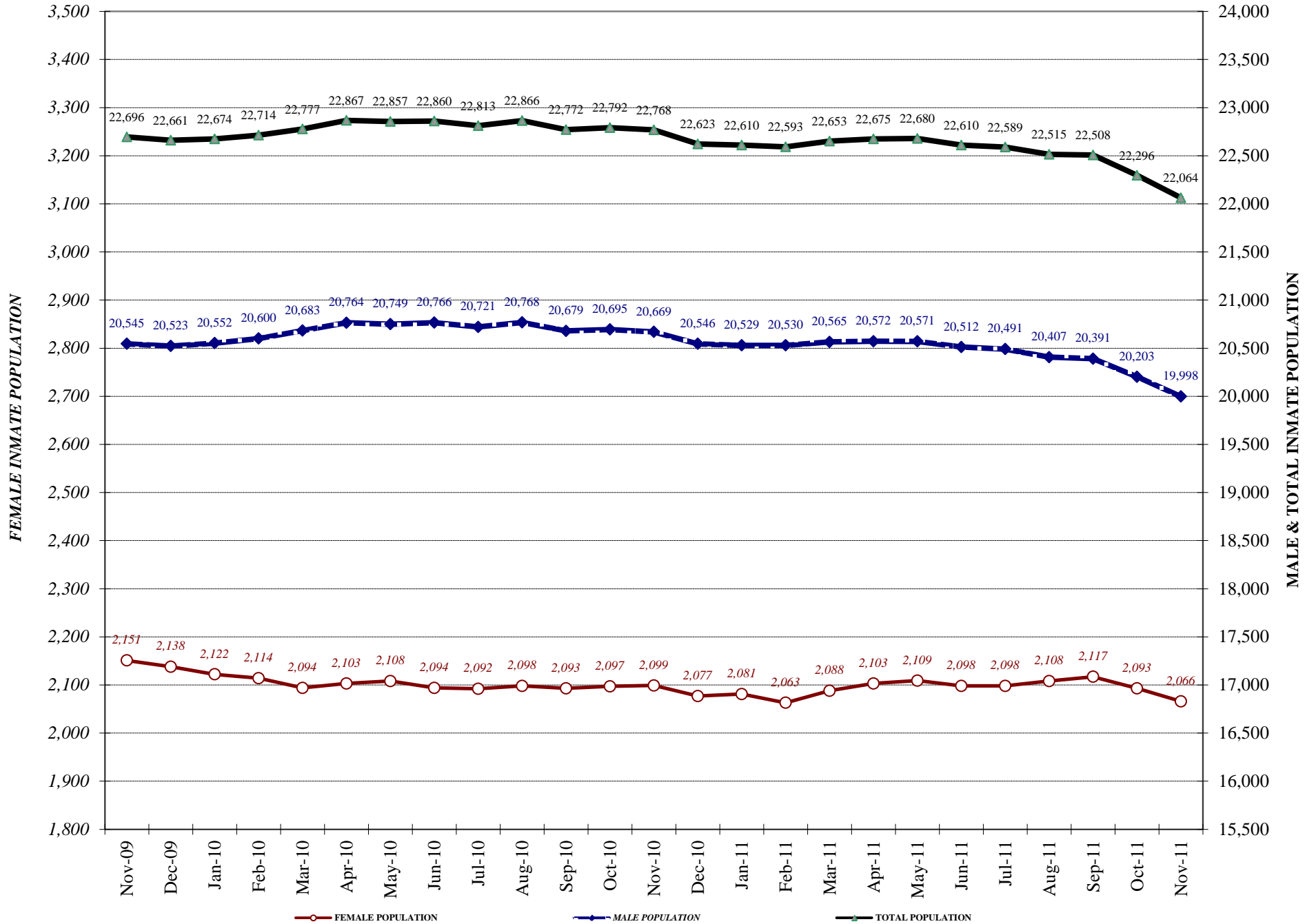
See previous page.

COLORADO DEPARTMENT OF CORRECTIONS Adult Prison Releases

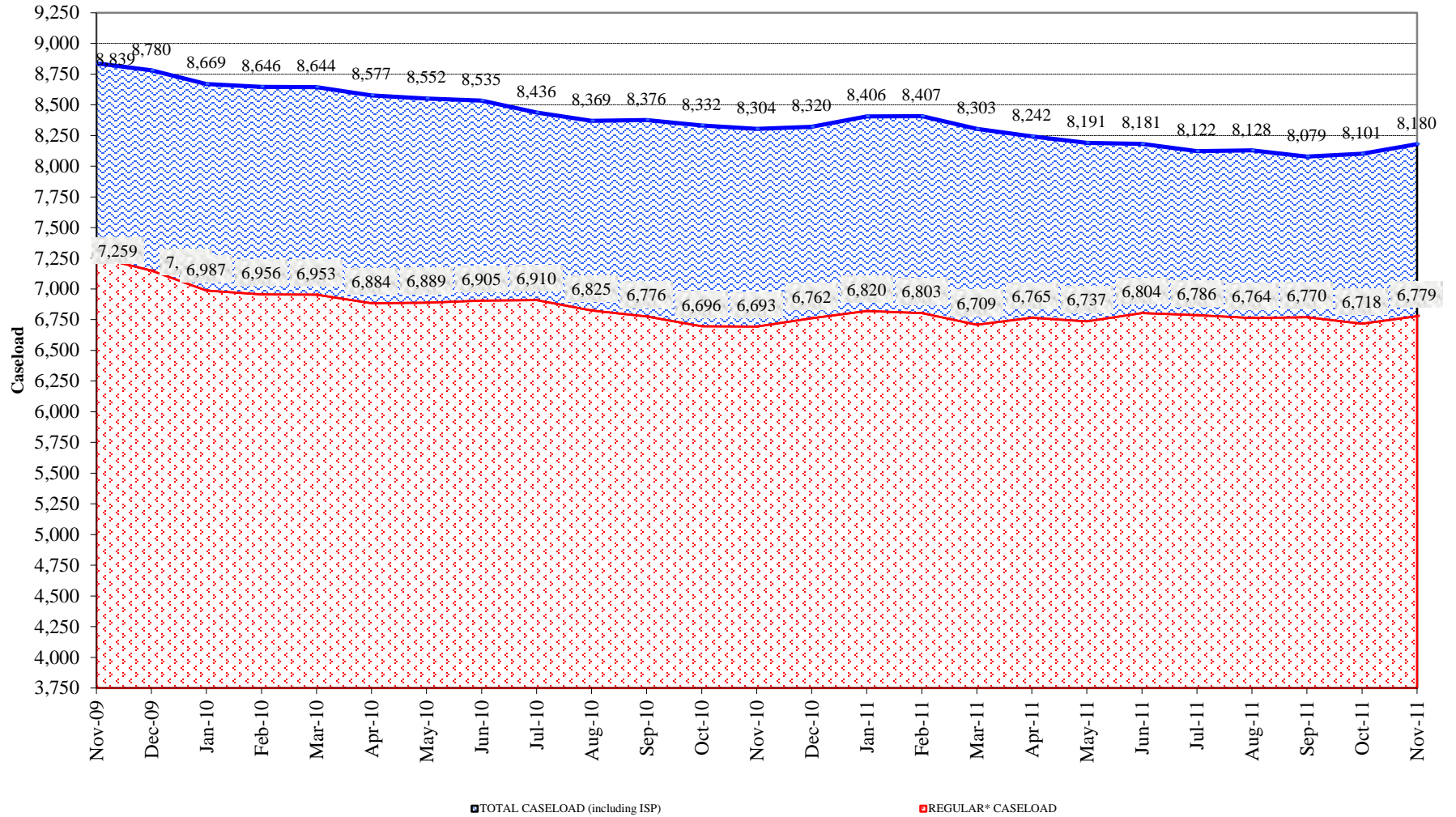


.Total releases include releases to discretionary parole and accelerated transition, mandatory parole/reparole and HB1351, all types of discharges and other releases as detailed on the previous two pages

COLORADO DEPARTMENT OF CORRECTIONS Adult Jurisdictional Inmate Population



COLORADO DEPARTMENT OF CORRECTIONS Parole Population



* Regular caseload includes interstate parole, but excludes out-of-state parolees and absconders.