

**COLORADO DEPARTMENT OF CORRECTIONS
MONTHLY POPULATION AND CAPACITY REPORT
as of October 31, 2011**

4-Nov-11

	10/31/11 OPERATIONAL CAPACITY ⁽¹⁾	----- 10/31/11 -----			----- 10/31/10 -----	
		ON-GRDS POPULATION	OFF-GRDS POPULATION	TOTAL POPULATION	OPERATIONAL CAPACITY ⁽¹⁾	ON-GRDS POPULATION
COLO STATE PENITENTIARY	756	743	3	746	756	741
CENTENNIAL CORR FAC	652	616	4	620	652	560
STERLING CORR FAC	2,545	2,446	14	2,460	2,545	2,426
LIMON CORR FAC	898	890	7	897	951	941
ARK VALLEY CORR FAC	1,007	999	7	1,006	1,007	995
BUENA VISTA CORR FAC	920	911	9	920	920	893
BUENA VISTA MIN CTR	304	284	16	300	292	285
COLO TERR CORR FAC	936	904	8	912	936	916
FORT LYON CORR FAC	500	195	3	198	500	481
FREMONT CORR FAC	1,661	1,647	13	1,660	1,661	1,639
LA VISTA CORR FAC	589	552	8	560	549	517
ARROWHEAD CORR CTR	524	505	4	509	494	489
FOUR MILE CORR CTR	525	523	4	527	499	485
TRINIDAD CORR FAC	484	481	4	485	484	479
SKYLINE CORR CTR	249	238	1	239	249	248
COLORADO CORR CTR	150	142	1	143	150	150
DELTA CORR CTR	484	436	3	439	484	473
RIFLE CORR CTR	192	164	0	164	192	179
DENVER WOMEN'S CORR FAC	976	952	7	959	976	938
DENVER REC DIAG CTR	542	493	10	503	480	489
SAN CARLOS CORR FAC	255	240	8	248	255	247
SUBTOTAL	15,149	14,361	134	14,495	15,032	14,571
CONTRACTS:						
BENT COUNTY CORR CTR		1,360	19	1,379		1,373
CROWLEY COUNTY CORR FAC		1,622	27	1,649		1,641
KIT CARSON COUNTY CORR FAC		797	6	803		825
CHEYENNE MTN REENTRY CTR		640	3	643		676
OFF-GROUNDS POPULATION:						
ESCAPEES/WALKAWAYS			189	212		228
REVOCATIONS-JAIL				0		0
JAIL BACKLOG:						
BACKLOG LESS THAN 72 HOURS			22		22	
BACKLOG GREATER THAN 72 HOURS (FISCAL YTD AVE =73)			56		94	
BACKLOG-PAROLEES AWAITING TRANSFER			29		37	
TOTAL JAIL BACKLOG			107			153
COUNTY JAIL CONTRACTS			47			24
COMMUNITY CENTERS						
PAROLE REVOCATIONS		1,627	95	1,722		1,817
REVOKED-RET TO CUST		0	1	1		0
REGRESSIONS		241	85	326		359
TOTAL COMM. CENTERS		1,868	315	2,183		2,277
ISP-INMATE						
REGRESSIONS		733	33	766		768
TOTAL ISP-INMATE		733	45	778		776
TOTAL COMM. CORRECTIONS						
MALE POPULATION				20,203		20,695
FEMALE POPULATION				2,093		2,097
TOTAL INMATE JURISDICTIONAL POPULATION				22,296		22,792

⁽¹⁾OPERATIONAL CAPACITY INCLUDES ALL BEDS AVAILABLE FOR USE, INCLUDING MANAGEMENT CONTROL UNITS, BUT EXCLUDES EMERGENCY DOUBLE BUNKING.

COLORADO DEPARTMENT OF CORRECTIONS
MONTHLY POPULATION AND CAPACITY REPORT
as of October 31, 2011

4-Nov-11

CURRENT MONTH CHANGES IN CAPACITY:

Arrowhead Correctional Center	Expansion of facility	+18
Four Mile Correctional Center	Expansion of facility	+18

NET MONTHLY GROWTH RATE:

CURRENT MONTH	-212
FISCAL YEAR-TO-DATE AVERAGE	-79

YOUTHFUL OFFENDER SYSTEM

	----- 10/31/11 -----			10/31/10
	PUEBLO	COMM. CORR.	TOTAL POPULATION	TOTAL POPULATION
INTAKE/IDO	5		5	6
RFP/REMEDICATION	12		12	12
PHASE I	190		190	191
PHASE II	16		16	16
PHASE III		47	47	43
OFF GROUNDS/BACKLOG			4	3
TOTAL Y.O.S. POPULATION	223	47	274	271

	CURRENT MONTH	FISCAL YR. TO DATE
YOS ADMISSIONS	4	28
YOS RELEASES:		
COMPLETION OF SENTENCE	4	13
JUDICIAL RELEASE TO PROB/CT ORD DISCHG	1	1
JUDICIAL TRANSFER TO DOC	0	0
TERMINATION/FAILURE	1	5
DECEASED	<u>0</u>	<u>0</u>
TOTAL RELEASES	6	19

PAROLE CASELOAD

	----- 10/31/11 -----			----- 9/30/11 -----		----- 10/31/10 -----	
	DOMESTIC	INTERST PAR/PROB	TOTAL CASELOAD	DOMESTIC	TOTAL CASELOAD	DOMESTIC	TOTAL CASELOAD
DENVER REGION							
REGULAR	2,580	78	2,658	2,563	2,641	2,442	2,530
ISP	<u>559</u>		<u>559</u>	<u>556</u>	<u>556</u>	<u>741</u>	<u>741</u>
SUBTOTAL	<u>3,139</u>	<u>78</u>	<u>3,217</u>	<u>3,119</u>	<u>3,197</u>	<u>3,183</u>	<u>3,271</u>
NORTHEAST REGION							
REGULAR	1,871	85	1,956	1,907	1,991	1,792	1,894
ISP	<u>373</u>		<u>373</u>	<u>345</u>	<u>345</u>	<u>406</u>	<u>406</u>
SUBTOTAL	<u>2,244</u>	<u>85</u>	<u>2,329</u>	<u>2,252</u>	<u>2,336</u>	<u>2,198</u>	<u>2,300</u>
SOUTHEAST REGION							
REGULAR	1,450	81	1,531	1,477	1,561	1,599	1,677
ISP	330		<u>330</u>	<u>300</u>	<u>300</u>	<u>340</u>	<u>340</u>
SUBTOTAL	<u>1,780</u>	<u>81</u>	<u>1,861</u>	<u>1,777</u>	<u>1,861</u>	<u>1,939</u>	<u>2,017</u>
WESTERN REGION							
REGULAR	537	36	573	539	577	547	595
ISP	121		<u>121</u>	<u>108</u>	<u>108</u>	<u>149</u>	<u>149</u>
SUBTOTAL	<u>658</u>	<u>36</u>	<u>694</u>	<u>647</u>	<u>685</u>	<u>696</u>	<u>744</u>
TOTAL CASELOAD							
REGULAR	6,438	280	6,718	6,486	6,770	6,380	6,696
ISP	<u>1,383</u>		<u>1,383</u>	<u>1,309</u>	<u>1,309</u>	<u>1,636</u>	<u>1,636</u>
TOTAL	<u>7,821</u>	<u>280</u>	<u>8,101</u>	<u>7,795</u>	<u>8,079</u>	<u>8,016</u>	<u>8,332</u>
ADDITIONAL CASELOAD:							
OUT-OF-STATE PAROLEES			1,950		1,938		2,019
PAROLEE ABSCONDERS			629		597		711

COLORADO DEPARTMENT OF CORRECTIONS
MONTHLY POPULATION AND CAPACITY REPORT
as of October 31, 2011

		----- FINAL CUSTODY DESIGNATION -----						
		Uncls.	Ad.Seg	Close	Medium	Min.-Res.	Minimum	Total
Male Population	COLO STATE PENITENTIARY		741	4	1			746
	CENTENNIAL CORR FAC		495	119	4	2		620
	STERLING CORR FAC		149	605	417	807	482	2,460
	LIMON CORR FAC		1	678	159	44	15	897
	ARK VALLEY CORR FAC		1	425	245	188	147	1,006
	BUENA VISTA CORR FAC		3	458	330	92	37	920
	BUENA VISTA MIN CTR				3	194	103	300
	COLO TERR CORR FAC		5	189	320	243	155	912
	FORT LYON CORR FAC			1	2	147	48	198
	FREMONT CORR FAC		11	274	420	508	447	1,660
	LA VISTA CORR FAC			7	13	13	16	49
	S.T.U. LA VISTA				1	17	1	19
	ARROWHEAD CORR CTR				1	312	196	509
	FOUR MILE CORR CTR				2	365	160	527
	TRINIDAD CORR FAC					427	58	485
	SKYLINE CORR CTR					6	233	239
	COLORADO CORR CTR					1	142	143
	DELTA CORR CTR				5	1	433	439
	RIFLE CORR CTR				2	4	158	164
	DENVER REC DIAG CTR	71	5	95	131	140	56	498
	SAN CARLOS CORR FAC		25	88	47	51	37	248
	CONTRACTS:							
	BENT COUNTY CORR CTR			5	847	351	176	1,379
	CROWLEY COUNTY CORR FAC				935	463	251	1,649
	KIT CARSON COUNTY CORR FAC			1	508	195	99	803
	CHEYENNE MTN REENTRY CTR			2	177	337	127	643
	COMMUNITY/ISP			7	34	89	1926	2,056
	Total Classified Male Population	71	1,436	2,958	4,604	4,997	5,503	19,569
	Percent of Total	0.4%	7.3%	15.1%	23.5%	25.5%	28.1%	
	Unclassified Facilities:							
	JAIL BACKLOG/REVOCATIONS							90
	COUNTY JAIL CONTRACTS							1
	REVOKED TO JAIL							0
REVOKED TO COMM CTR							1	
REVOKED-RET TO CUST FAC (62 off-grounds)							265	
COMM/ISP REGRESSIONS							96	
ESCAPEES/WALKAWAYS							181	
Total Unclassified Facilities							634	
Total Male Population							20,203	
Female Population	DENVER WOMEN'S CORR FAC	33	31	215	149	299	232	959
	LA VISTA CORR FAC			55	77	199	161	492
	DENVER REC DIAG CTR INF		1	1		3		5
	COLO TERR CORR FAC INF.							0
	COMMUNITY/ISP			4	2	20	406	432
	Total Classified Female Population	33	32	275	228	521	799	1,888
	Percent of Total	1.7%	1.7%	14.6%	12.1%	27.6%	42.3%	
	Unclassified Facilities:							
	JAIL BACKLOG/REVOCATIONS							17
	COUNTY JAIL CONTRACTS							46
	REVOKED TO JAIL							0
	REVOKED TO COMM CTR							0
	REVOKED-RET TO CUST FAC (23 off-grounds)							61
COMM/ISP REGRESSIONS							50	
ESCAPEES/WALKAWAYS							31	
Total Unclassified Facilities							205	
Total Female Population							2,093	
Total Classified Population	104	1,468	3,233	4,832	5,518	6,302	21,457	
Percent of Total	0.5%	6.8%	15.1%	22.5%	25.7%	29.4%		

COLORADO DEPARTMENT OF CORRECTIONS

ADULT INMATE JURISDICTIONAL POPULATION ⁽¹⁾

DATE: 11/4/2011

DATE	MALE POPULATION			FEMALE POPULATION			TOTAL POPULATION		
	Male Population	Net Change	Fiscal Y-T-D Average	Female Population	Net Change	Fiscal Y-T-D Average	Total Population	Net Change	Fiscal Y-T-D Average
10-31-11	20,203	-188		2,093	-24		22,296	-212	
09-30-11	20,391	-16	-77	2,117	9	-1	22,508	-7	-79
08-31-11	20,407	-84		2,108	10		22,515	-74	
07-31-11	20,491	-21		2,098	0		22,589	-21	
06-30-11	20,512	-59		2,098	-11		22,610	-70	
05-31-11	20,571	-1		2,109	6		22,680	5	
04-30-11	20,572	7		2,103	15		22,675	22	
03-31-11	20,565	35		2,088	25		22,653	60	
02-28-11	20,530	1		2,063	-18		22,593	-17	
01-31-11	20,529	-17		2,081	4		22,610	-13	
12-31-10	20,546	-123	-21	2,077	-22	0	22,623	-145	-21
11-30-10	20,669	-26		2,099	2		22,768	-24	
10-31-10	20,695	16		2,097	4		22,792	20	
09-30-10	20,679	-89		2,093	-5		22,772	-94	
08-31-10	20,768	47		2,098	6		22,866	53	
07-31-10	20,721	-45		2,092	-2		22,813	-47	
06-30-10	20,766	17		2,094	-14		22,860	3	
05-31-10	20,749	-15		2,108	5		22,857	-10	
04-30-10	20,764	81		2,103	9		22,867	90	
03-31-10	20,683	83		2,094	-20		22,777	63	
02-28-10	20,600	48		2,114	-8		22,714	40	
01-31-10	20,552	29		2,122	-16		22,674	13	
12-31-09	20,523	-22	-11	2,138	-13	-16	22,661	-35	-27
11-30-09	20,545	-176		2,151	-50		22,696	-226	
10-31-09	20,721	-179		2,201	-21		22,922	-200	
09-30-09	20,900	-13		2,222	-43		23,122	-56	
08-31-09	20,913	-15		2,265	-27		23,178	-42	
07-31-09	20,928	32		2,292	2		23,220	34	
06-30-09	20,896		16	2,290		-1	23,186		15
06-30-08	20,684		42	2,305		-3	22,989		39
06-30-07	20,178		32	2,341		10	22,519		42
06-30-06	19,792		97	2,220		12	22,012		109
06-30-05	18,631		68	2,073		27	20,704		95
06-30-04	17,814		49	1,755		11	19,569		60
06-30-03	17,226		57	1,620		10	18,846		67
06-30-02	16,539		87	1,506		14	18,045		101
06-30-01	15,493		63	1,340		6	16,833		70
06-30-00	14,733		99	1,266		7	15,999		106
06-30-99	13,547		75	1,179		14	14,726		89
06-30-98	12,647			1,016			13,663		

⁽¹⁾ Adult inmate jurisdictional population includes on-grounds, off-grounds, out-of-state, escapees, and jail backlog and excludes offenders sentenced to the Youthful Offender System (YOS).

COLORADO DEPARTMENT OF CORRECTIONS
ADULT INMATE RELEASES FROM PRISON
TOTAL Population (Male and Female)

11/4/2011

	Parole ⁽¹⁾							Discharge			Other				Total
	Discretionary	Mandatory	Wknd. Mand.	Mand. Repar.	Wknd. Mand. Repar.	HB 1351 Early	Accl Trans	Sentence ⁽²⁾	Martin/Cooper	Chgs/Det.	Probation	Ct. Ord. Dsch.	Appeal Bond	Deceased	
Oct-11	273	135	108	113	84	69	0	98	2	16	13	1	0	0	912
Sep-11	209	108	104	92	65	74	0	100	1	14	10	4	0	3	784
Aug-11	279	123	100	133	64	85	0	87	2	13	4	3	0	1	894
Jul-11	194	109	99	135	56	75	0	80	3	19	5	5	0	3	783
FY 2012-Avg	239	119	103	118	67	76	N/A	91	2	16	8	3	0	2	843
FY 2011-Avg	175	138	107	126	76	87	0	100	2	16	8	5	0	5	846
FY 2010-Avg.	237	141	121	119	87	46	N/A	101	3	14	10	8	0	4	913
FY 2009-Avg.	343	188	N/A	93	N/A	N/A	N/A	97	5	17	12	10	0	4	898
FY 2008-Avg.	466	186	N/A	88	N/A	N/A	N/A	90	8	17	12	11	0	4	881
FY 2007-Avg.	422	198	N/A	89	N/A	N/A	N/A	81	10	16	13	9	0	4	843
FY 2006-Avg.	234	266	N/A	98	N/A	N/A	N/A	88	13	15	16	10	0	5	746

Definitions of Release Types

Discretionary parole-Released to parole through Parole Board discretion prior to mandatory release or sentence discharge date.

Mandatory parole-Released to parole on mandatory release date.

Wknd Mand.-Mandatory releases scheduled to release on a weekend; released a few days early under Parole Board authority.

Mand. Repar-Reparoled on specific date set by Parole Board (includes S.B. 252 reparoles). n/a - breakout not available prior to June 2004.

Wknd Mand. Repar.-Mandatory Reparole releases scheduled to release on a weekend; released a few days early under Parole Board authority.

HB 1351 Early - Released to parole, subject to earn time provisions of H.B. 09-1351.

Accl Trans - Accelerated Transition released to parole prior to mandatory release by parole board based on program eligibility criteria.

Sentence discharge-Completion of sentence with no further supervision.

Martin/ Cooper discharge-Completion of sentence with no further supervision, sex offender subject to Martin/Cooper Supreme Court decision.

Chgs/ Det. discharge-Completion of sentence, released to other law enforcement for pending charges or detainers.

Probation-Released by court to probation.

Ct. Ord. Dsch.-Released by court order.

Appeal Bond-Released by court to appeal bond.

Deceased-Offender death in prison.

⁽¹⁾Due to the decrease in community transportation services, the Department implemented a procedural change in December 2005 with regards to releasing inmates on weekends. As a result, discretionary releases increased and mandatory releases decreased. However, beginning December 2008, the implementation of a new electronic coding system enabled these releases to be correctly classified as weekend mandatory parole and mandatory reparole releases.

⁽²⁾Sentence is now a combination of Sentence and HB 1087 due to legislation passed in 2009.

COLORADO DEPARTMENT OF CORRECTIONS
ADULT INMATE RELEASES FROM PRISON

11/4/2011

Male Population Only

	Parole ⁽¹⁾							Discharge			Other				Total
	Discre- tionary	Mand- atory	Wknd. Mand.	Mand. Repar.	Wknd. Mand. Repar.	HB 1351 Early	Accel Trans	Sentence ⁽²⁾	Martin/ Cooper	Chgs/ Det.	Probation	Ct. Ord. Dsch.	Appeal Bond	Deceased	
Oct-11	227	128	94	96	76	61	0	82	2	15	11	1	0	0	793
Sep-11	172	100	94	79	55	66	0	92	1	14	7	4	0	3	687
Aug-11	242	110	94	116	54	77	0	79	2	12	3	2	0	1	792
Jul-11	166	94	88	117	49	63	0	70	3	17	4	5	0	3	679
FY 2012-Avg.	202	108	93	102	59	67	0	81	2	15	6	3	0	2	738
FY 2011-Avg.	146	125	98	110	67	76	0	89	2	15	7	5	0	4	744
FY 2010-Avg.	196	129	108	104	76	39	N/A	33	3	13	9	7	0	4	797
FY 2009-Avg.	294	167	N/A	80	N/A	N/A	N/A	31	5	15	10	9	0	4	786
FY 2008-Avg.	397	162	N/A	76	N/A	N/A	N/A	32	8	16	10	9	0	4	762
FY 2007-Avg.	359	175	N/A	77	N/A	N/A	N/A	29	9	15	11	8	0	4	733
FY 2006-Avg.	196	233	N/A	84	N/A	N/A	N/A	35	13	14	15	9	0	5	648

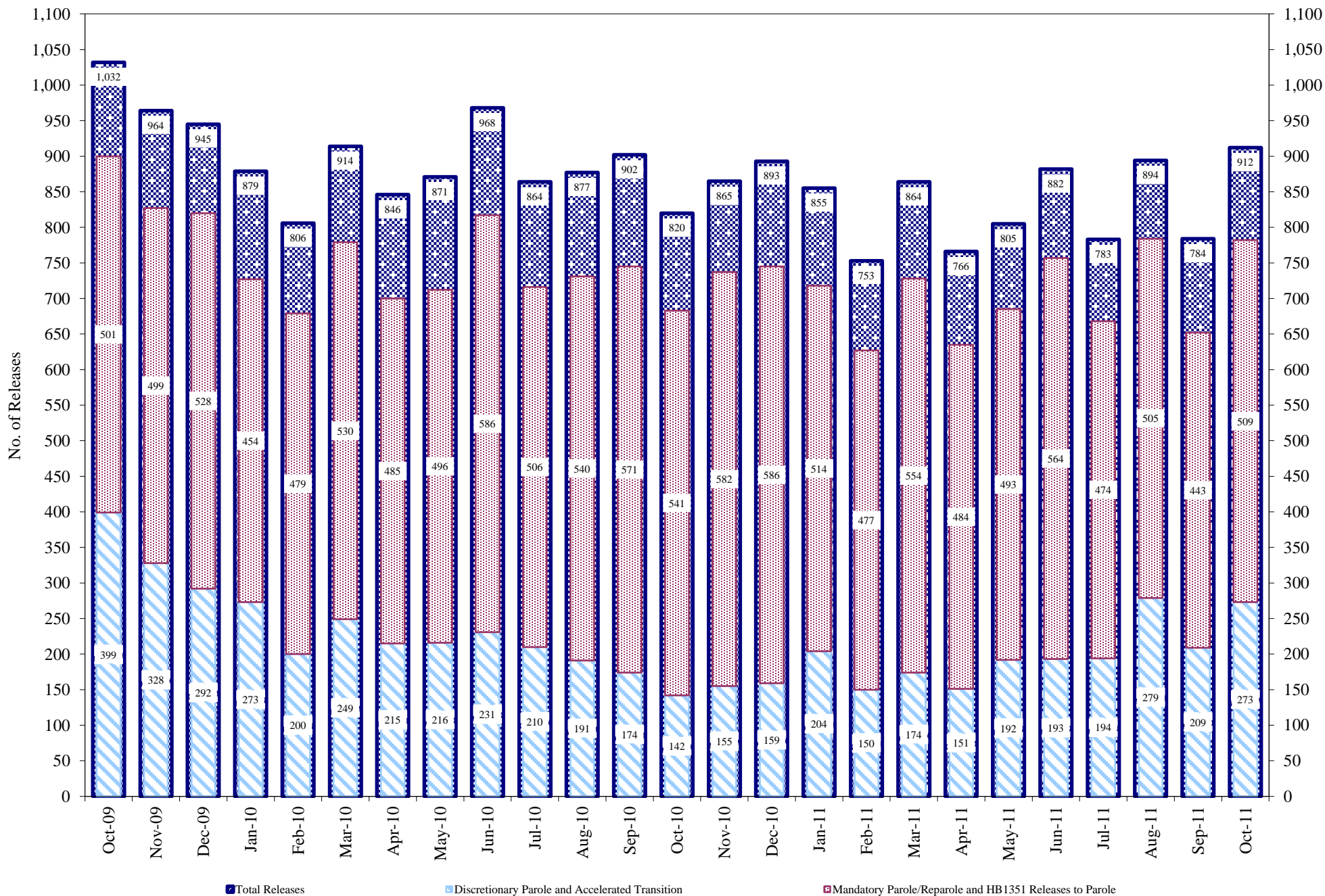
Female Population Only

	Parole ⁽¹⁾							Discharge			Other				Total
	Discre- tionary	Mand- atory	Wknd. Mand.	Mand. Repar.	Wknd. Mand. Repar.	HB 1351 Early	Accel Trans	Sentence ⁽²⁾	Martin/ Cooper	Chgs/ Det.	Probation	Ct. Ord. Dsch.	Appeal Bond	Deceased	
Oct-11	46	7	14	17	8	8	0	16	0	1	2	0	0	0	119
Sep-11	37	8	10	13	10	8	0	8	0	0	3	0	0	0	97
Aug-11	37	13	6	17	10	8	0	8	0	1	1	1	0	0	102
Jul-11	28	15	11	18	7	12	0	10	0	2	1	0	0	0	104
FY 2012-Avg.	37	11	10	16	9	9	0	11	0	1	2	0	0	0	106
FY 2011-Avg.	28	13	9	16	9	12	0	11	0	1	1	1	0	0	101
FY 2010-Avg.	41	13	13	14	10	7	N/A	3	0	1	1	1	0	0	117
FY 2009-Avg.	49	21	N/A	13	N/A	N/A	N/A	3	0	2	2	1	0	0	112
FY 2008-Avg.	69	23	N/A	12	N/A	N/A	N/A	2	0	2	2	2	0	0	119
FY 2007-Avg.	63	23	N/A	11	N/A	N/A	N/A	2	0	1	2	1	0	0	109
FY 2006-Avg.	39	34	N/A	14	N/A	N/A	N/A	3	0	1	2	1	0	0	98

Definitions of Release Types

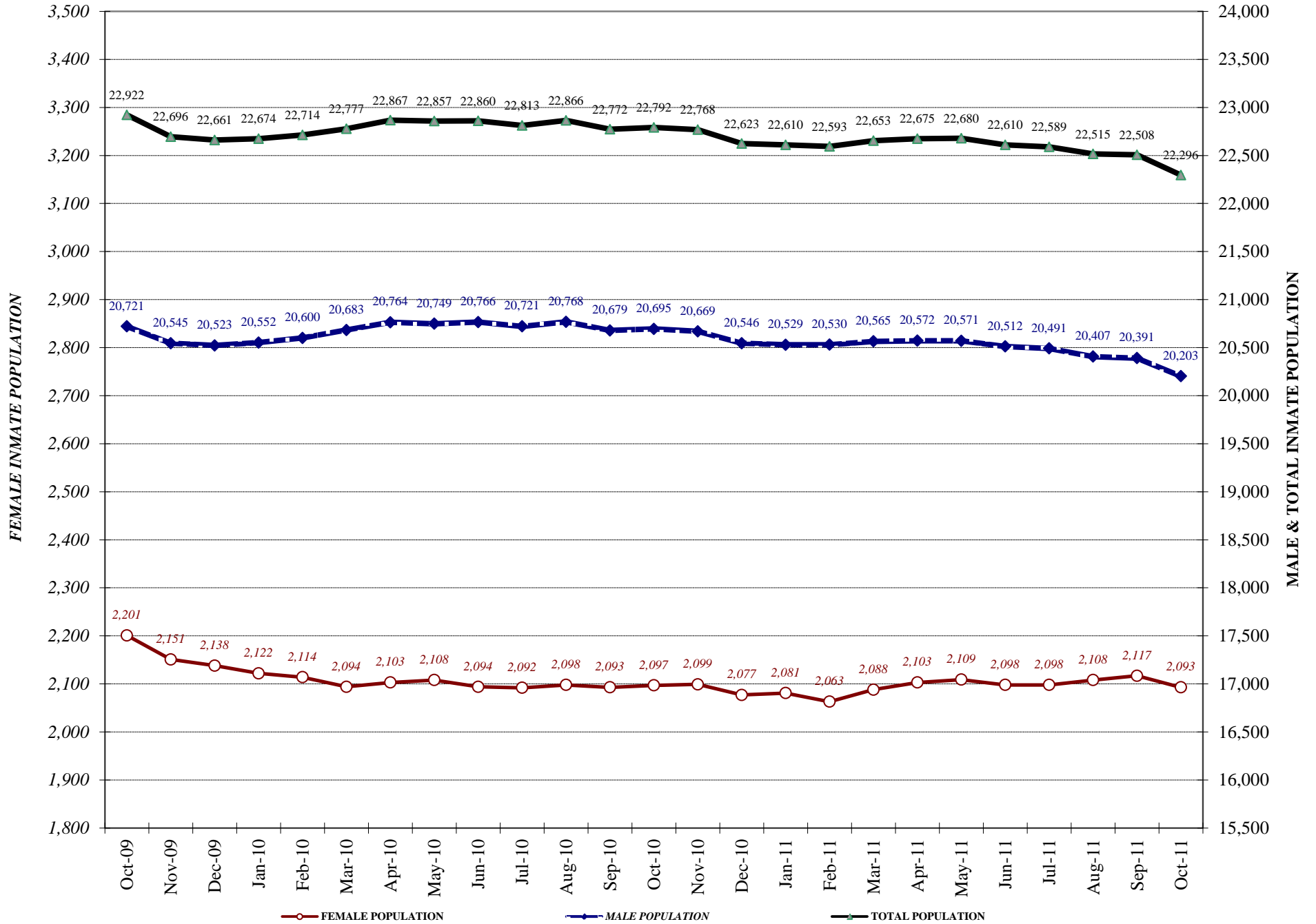
See previous page.

COLORADO DEPARTMENT OF CORRECTIONS Adult Prison Releases

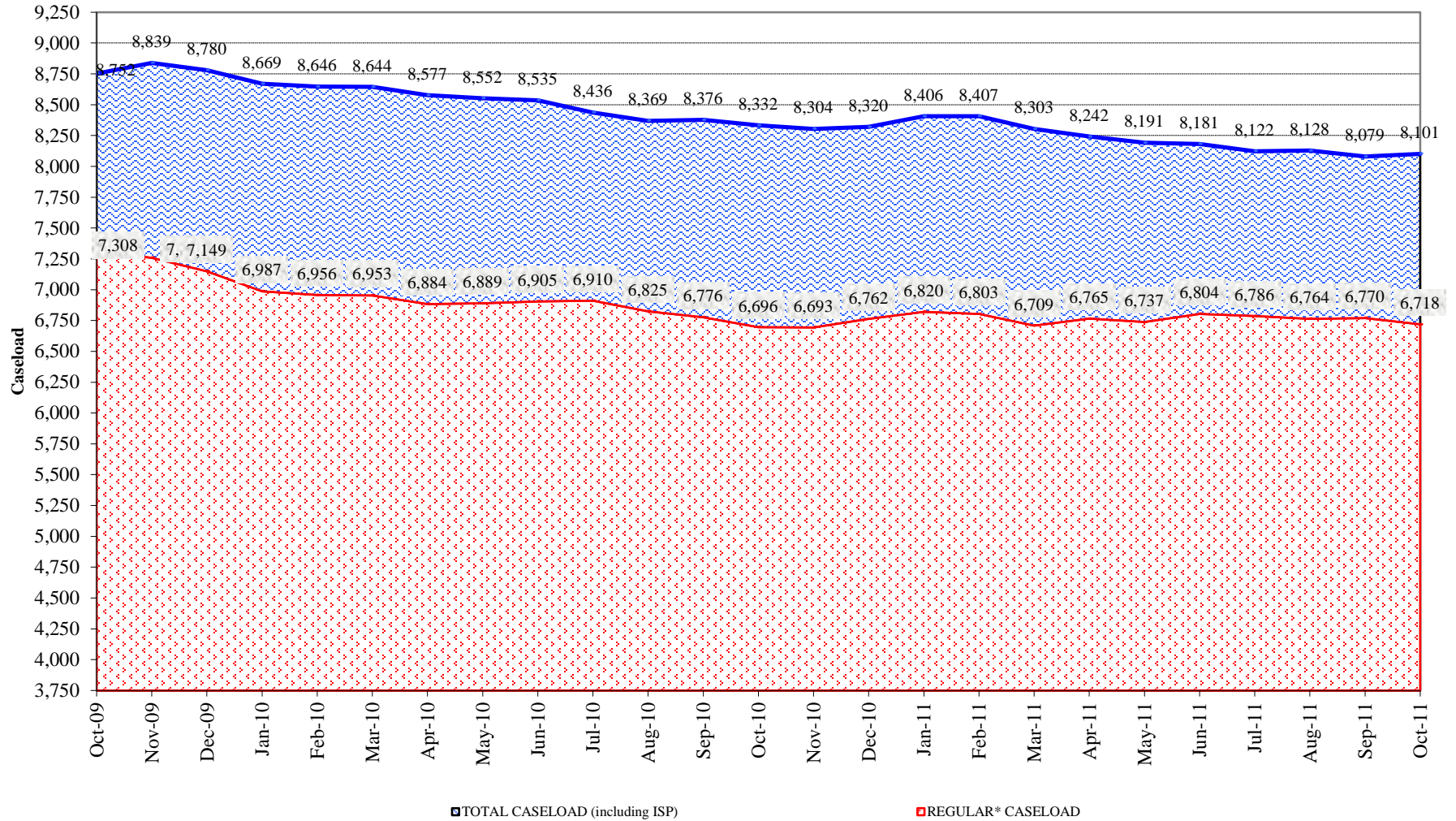


.Total releases include releases to discretionary parole and accelerated transition, mandatory parole/reparole and HB1351, all types of discharges and other releases as detailed on the previous two pages

COLORADO DEPARTMENT OF CORRECTIONS Adult Jurisdictional Inmate Population



COLORADO DEPARTMENT OF CORRECTIONS Parole Population



* Regular caseload includes interstate parole, but excludes out-of-state parolees and absconders.