

**COLORADO DEPARTMENT OF CORRECTIONS
MONTHLY POPULATION AND CAPACITY REPORT
as of September 30, 2011**

3-Oct-11

	9/30/11	9/30/11			9/30/10	
	OPERATIONAL	ON-GRDS	OFF-GRDS	TOTAL	OPERATIONAL	ON-GRDS
	CAPACITY ⁽¹⁾	POPULATION	POPULATION	POPULATION	CAPACITY ⁽¹⁾	POPULATION
COLO STATE PENITENTIARY	756	749	2	751	756	607
CENTENNIAL CORR FAC	652	622	3	625	652	595
STERLING CORR FAC	2,545	2,471	16	2,487	2,545	2,476
LIMON CORR FAC	898	892	4	896	951	938
ARK VALLEY CORR FAC	1,007	990	9	999	1,007	994
BUENA VISTA CORR FAC	920	915	17	932	920	908
BUENA VISTA MIN CTR	304	298	1	299	292	285
COLO TERR CORR FAC	936	921	11	932	936	894
FORT LYON CORR FAC	500	209	9	218	500	494
FREMONT CORR FAC	1,661	1,648	7	1,655	1,661	1,642
LA VISTA CORR FAC	589	549	11	560	549	521
ARROWHEAD CORR CTR	506	502	1	503	494	490
FOUR MILE CORR CTR	507	503	4	507	499	492
TRINIDAD CORR FAC	484	479	4	483	484	474
SKYLINE CORR CTR	249	247	0	247	249	249
COLORADO CORR CTR	150	143	1	144	150	150
DELTA CORR CTR	484	447	5	452	484	474
RIFLE CORR CTR	192	181	0	181	192	190
DENVER WOMEN'S CORR FAC	976	958	9	967	976	955
DENVER REC DIAG CTR	542	562	6	568	480	477
SAN CARLOS CORR FAC	255	242	8	250	255	239
SUBTOTAL	15,113	14,528	128	14,656	15,032	14,544
CONTRACTS:						
BENT COUNTY CORR CTR		1,379	19	1,398		1,375
CROWLEY COUNTY CORR FAC		1,645	37	1,682		1,629
KIT CARSON COUNTY CORR FAC		810	5	815		822
CHEYENNE MTN REENTRY CTR		603	2	605		712
OFF-GROUNDS POPULATION:						
ESCAPEES/WALKAWAYS			191	224		225
REVOCATIONS-JAIL				0		0
JAIL BACKLOG:						
BACKLOG LESS THAN 72 HOURS			39		71	
BACKLOG GREATER THAN 72 HOURS (FISCAL YTD AVE =70)			46		45	
BACKLOG-PAROLEES AWAITING TRANSFER			36		53	
TOTAL JAIL BACKLOG			121			169
COUNTY JAIL CONTRACTS			46			48
COMMUNITY CENTERS						
PAROLE REVOCATIONS		1,611	114	1,725		1,789
REVOKED-RET TO CUST		1		1		0
REGRESSIONS		239	72	311		369
TOTAL COMM. CENTERS		1,851	334	2,185		2,257
ISP-INMATE						
REGRESSIONS		734	30	764		771
TOTAL ISP-INMATE		734	42	776		779
TOTAL COMM. CORRECTIONS						
MALE POPULATION				20,391		20,679
FEMALE POPULATION				2,117		2,093
TOTAL INMATE JURISDICTIONAL POPULATION				22,508		22,772

⁽¹⁾OPERATIONAL CAPACITY INCLUDES ALL BEDS AVAILABLE FOR USE, INCLUDING MANAGEMENT CONTROL UNITS, BUT EXCLUDES EMERGENCY DOUBLE BUNKING.

COLORADO DEPARTMENT OF CORRECTIONS
MONTHLY POPULATION AND CAPACITY REPORT
as of September 30, 2011

3-Oct-11

CURRENT MONTH CHANGES IN CAPACITY:

NET MONTHLY GROWTH RATE:

CURRENT MONTH

-7

FISCAL YEAR-TO-DATE AVERAGE

-34

YOUTHFUL OFFENDER SYSTEM

	----- 9/30/11 -----			9/30/10
	PUEBLO	COMM. CORR.	TOTAL POPULATION	TOTAL POPULATION
INTAKE/IDO	6		6	7
RFP/REMEDICATION	10		10	12
PHASE I	194		194	188
PHASE II	10		10	14
PHASE III		53	53	41
OFF GROUNDS/BACKLOG			5	3
TOTAL Y.O.S. POPULATION	220	53	278	265

	CURRENT MONTH	FISCAL YR. TO DATE
YOS ADMISSIONS	6	24
YOS RELEASES:		
COMPLETION OF SENTENCE	3	9
JUDICIAL RELEASE TO PROB/CT ORD DISCHG	0	0
JUDICIAL TRANSFER TO DOC	0	0
TERMINATION/FAILURE	2	4
DECEASED	0	0
TOTAL RELEASES	5	13

PAROLE CASELOAD

	----- 9/30/11 -----			----- 8/31/11 -----		----- 9/30/10 -----	
	DOMESTIC	INTERST PAR/PROB	TOTAL CASELOAD	DOMESTIC	TOTAL CASELOAD	DOMESTIC	TOTAL CASELOAD
DENVER REGION							
REGULAR	2,563	78	2,641	2,584	2,628	2,478	2,565
ISP	556		556	589	589	733	733
SUBTOTAL	3,119	78	3,197	3,173	3,217	3,211	3,298
NORTHEAST REGION							
REGULAR	1,907	84	1,991	1,987	2,006	1,813	1,917
ISP	345		345	365	365	386	386
SUBTOTAL	2,252	84	2,336	2,352	2,371	2,199	2,303
SOUTHEAST REGION							
REGULAR	1,477	84	1,561	1,533	1,569	1,624	1,703
ISP	300		300	299	299	332	332
SUBTOTAL	1,777	84	1,861	1,832	1,868	1,956	2,035
WESTERN REGION							
REGULAR	539	38	577	556	561	540	591
ISP	108		108	111	111	149	149
SUBTOTAL	647	38	685	667	672	689	740
TOTAL CASELOAD							
REGULAR	6,486	284	6,770	6,660	6,764	6,455	6,776
ISP	1,309		1,309	1,364	1,364	1,600	1,600
TOTAL	7,795	284	8,079	8,024	8,128	8,055	8,376
ADDITIONAL CASELOAD:							
OUT-OF-STATE PAROLEES			1,938		1,959		2,052
PAROLEE ABSCONDERS			597		583		740

COLORADO DEPARTMENT OF CORRECTIONS
MONTHLY POPULATION AND CAPACITY REPORT
as of September 30, 2011

		----- FINAL CUSTODY DESIGNATION -----							
		Uncls.	Ad.Seg	Close	Medium	Min.-Res.	Minimum	Total	
Male Population	COLO STATE PENITENTIARY		747	2	1		1	751	
	CENTENNIAL CORR FAC		497	119	3	4	2	625	
	STERLING CORR FAC		175	589	429	817	477	2,487	
	LIMON CORR FAC		1	683	158	37	17	896	
	ARK VALLEY CORR FAC		3	419	252	180	145	999	
	BUENA VISTA CORR FAC		3	453	345	97	34	932	
	BUENA VISTA MIN CTR				4	187	108	299	
	COLO TERR CORR FAC		3	218	315	239	156	931	
	FORT LYON CORR FAC				2	47	126	43	218
	FREMONT CORR FAC		7	266	417	535	430	1,655	
	LA VISTA CORR FAC				6	12	11	12	41
	S.T.U. LA VISTA					1	16	3	20
	ARROWHEAD CORR CTR					1	310	192	503
	FOUR MILE CORR CTR					1	351	155	507
	TRINIDAD CORR FAC					4	422	57	483
	SKYLINE CORR CTR						5	242	247
	COLORADO CORR CTR						1	143	144
	DELTA CORR CTR					2	1	449	452
	RIFLE CORR CTR						2	179	181
	DENVER REC DIAG CTR	111	6	66	142	171	68	564	
	SAN CARLOS CORR FAC		24	88	55	45	38	250	
	CONTRACTS:								
	BENT COUNTY CORR CTR			7	853	355	183	1,398	
	CROWLEY COUNTY CORR FAC			2	913	489	278	1,682	
	KIT CARSON COUNTY CORR FAC			7	492	209	107	815	
	CHEYENNE MTN REENTRY CTR			5	148	340	112	605	
	COMMUNITY/ISP	1		14	41	97	1900	2,053	
	Total Classified Male Population	112	1,466	2,946	4,636	5,047	5,531	19,738	
	Percent of Total	0.6%	7.4%	14.9%	23.5%	25.6%	28.0%		
	Unclassified Facilities:								
	JAIL BACKLOG/REVOCATIONS							94	
	COUNTY JAIL CONTRACTS							1	
REVOKED TO JAIL							0		
REVOKED TO COMM CTR							1		
REVOKED-RET TO CUST FAC (52 off-grounds)							254		
COMM/ISP REGRESSIONS							110		
ESCAPEES/WALKAWAYS							193		
Total Unclassified Facilities							653		
Total Male Population							20,391		
Female Population	DENVER WOMEN'S CORR FAC	20	38	226	143	304	236	967	
	LA VISTA CORR FAC			47	79	207	166	499	
	DENVER REC DIAG CTR INF		1			3		4	
	COLO TERR CORR FAC INF.					1		1	
	COMMUNITY/ISP	1		7	5	16	407	436	
	Total Classified Female Population	21	39	280	227	531	809	1,907	
	Percent of Total	1.1%	2.0%	14.7%	11.9%	27.8%	42.4%		
	Unclassified Facilities:								
	JAIL BACKLOG/REVOCATIONS							27	
	COUNTY JAIL CONTRACTS							45	
	REVOKED TO JAIL							0	
	REVOKED TO COMM CTR							0	
	REVOKED-RET TO CUST FAC (20 off-grounds)							57	
COMM/ISP REGRESSIONS							50		
ESCAPEES/WALKAWAYS							31		
Total Unclassified Facilities							210		
Total Female Population							2,117		
Total Classified Population	133	1,505	3,226	4,863	5,578	6,340	21,645		
Percent of Total	0.6%	7.0%	14.9%	22.5%	25.8%	29.3%			

COLORADO DEPARTMENT OF CORRECTIONS
ADULT INMATE JURISDICTIONAL POPULATION ⁽¹⁾

DATE: 10/3/2011

DATE	MALE POPULATION			FEMALE POPULATION			TOTAL POPULATION		
	Male Population	Net Change	Fiscal Y-T-D Average	Female Population	Net Change	Fiscal Y-T-D Average	Total Population	Net Change	Fiscal Y-T-D Average
09-30-11	20,391	-16		2,117	9		22,508	-7	
08-31-11	20,407	-84	-40	2,108	10	6	22,515	-74	-34
07-31-11	20,491	-21		2,098	0		22,589	-21	
06-30-11	20,512	-59		2,098	-11		22,610	-70	
05-31-11	20,571	-1		2,109	6		22,680	5	
04-30-11	20,572	7		2,103	15		22,675	22	
03-31-11	20,565	35		2,088	25		22,653	60	
02-28-11	20,530	1		2,063	-18		22,593	-17	
01-31-11	20,529	-17		2,081	4		22,610	-13	
12-31-10	20,546	-123	-21	2,077	-22	0	22,623	-145	-21
11-30-10	20,669	-26		2,099	2		22,768	-24	
10-31-10	20,695	16		2,097	4		22,792	20	
09-30-10	20,679	-89		2,093	-5		22,772	-94	
08-31-10	20,768	47		2,098	6		22,866	53	
07-31-10	20,721	-45		2,092	-2		22,813	-47	
06-30-10	20,766	17		2,094	-14		22,860	3	
05-31-10	20,749	-15		2,108	5		22,857	-10	
04-30-10	20,764	81		2,103	9		22,867	90	
03-31-10	20,683	83		2,094	-20		22,777	63	
02-28-10	20,600	48		2,114	-8		22,714	40	
01-31-10	20,552	29		2,122	-16		22,674	13	
12-31-09	20,523	-22	-11	2,138	-13	-16	22,661	-35	-27
11-30-09	20,545	-176		2,151	-50		22,696	-226	
10-31-09	20,721	-179		2,201	-21		22,922	-200	
09-30-09	20,900	-13		2,222	-43		23,122	-56	
08-31-09	20,913	-15		2,265	-27		23,178	-42	
07-31-09	20,928	32		2,292	2		23,220	34	
06-30-09	20,896		16	2,290		-1	23,186		15
06-30-08	20,684		42	2,305		-3	22,989		39
06-30-07	20,178		32	2,341		10	22,519		42
06-30-06	19,792		97	2,220		12	22,012		109
06-30-05	18,631		68	2,073		27	20,704		95
06-30-04	17,814		49	1,755		11	19,569		60
06-30-03	17,226		57	1,620		10	18,846		67
06-30-02	16,539		87	1,506		14	18,045		101
06-30-01	15,493		63	1,340		6	16,833		70
06-30-00	14,733		99	1,266		7	15,999		106
06-30-99	13,547		75	1,179		14	14,726		89
06-30-98	12,647			1,016			13,663		

⁽¹⁾ Adult inmate jurisdictional population includes on-grounds, off-grounds, out-of-state, escapees, and jail backlog and excludes offenders sentenced to the Youthful Offender System (YOS).

COLORADO DEPARTMENT OF CORRECTIONS
ADULT INMATE RELEASES FROM PRISON
TOTAL Population (Male and Female)

10/3/2011

	Parole ⁽¹⁾							Discharge			Other				Total
	Discretionary	Mandatory	Wknd. Mand.	Mand. Repar.	Wknd. Mand. Repar.	HB 1351 Early	Accl Trans	Sentence ⁽²⁾	Martin/Cooper	Chgs/Det.	Probation	Ct. Ord. Dsch.	Appeal Bond	Deceased	
Sep-11	209	108	104	92	65	74	0	100	1	14	10	4	0	3	784
Aug-11	279	123	100	133	64	85	0	87	2	13	4	3	0	1	894
Jul-11	194	109	99	135	56	75	0	80	3	19	5	5	0	3	783
FY 2012-Avg	227	113	101	120	62	78	N/A	89	2	15	6	4	0	2	820
FY 2011-Avg	175	138	107	126	76	87	0	100	2	16	8	5	0	5	846
FY 2010-Avg.	237	141	121	119	87	46	N/A	101	3	14	10	8	0	4	913
FY 2009-Avg.	343	188	N/A	93	N/A	N/A	N/A	97	5	17	12	10	0	4	898
FY 2008-Avg.	466	186	N/A	88	N/A	N/A	N/A	90	8	17	12	11	0	4	881
FY 2007-Avg.	422	198	N/A	89	N/A	N/A	N/A	81	10	16	13	9	0	4	843
FY 2006-Avg.	234	266	N/A	98	N/A	N/A	N/A	88	13	15	16	10	0	5	746

Definitions of Release Types

Discretionary parole-Released to parole through Parole Board discretion prior to mandatory release or sentence discharge date.

Mandatory parole-Released to parole on mandatory release date.

Wknd Mand.-Mandatory releases scheduled to release on a weekend; released a few days early under Parole Board authority.

Mand. Repar.-Reparoled on specific date set by Parole Board (includes S.B. 252 reparaes). n/a - breakout not available prior to June 2004.

Wknd Mand. Repar.-Mandatory Reparole releases scheduled to release on a weekend; released a few days early under Parole Board authority.

HB 1351 Early - Released to parole, subject to earn time provisions of H.B. 09-1351.

Accl Trans - Accelerated Transition released to parole prior to mandatory release by parole board based on program eligibility criteria.

Sentence discharge-Completion of sentence with no further supervision.

Martin/ Cooper discharge-Completion of sentence with no further supervision, sex offender subject to Martin/Cooper Supreme Court decision.

Chgs/ Det. discharge-Completion of sentence, released to other law enforcement for pending charges or detainees.

Probation-Released by court to probation.

Ct. Ord. Dsch.-Released by court order.

Appeal Bond-Released by court to appeal bond.

Deceased-Offender death in prison.

⁽¹⁾Due to the decrease in community transportation services, the Department implemented a procedural change in December 2005 with regards to releasing inmates on weekends. As a result, discretionary releases increased and mandatory releases decreased. However, beginning December 2008, the implementation of a new electronic coding system enabled these releases to be correctly classified as weekend mandatory parole and mandatory reparaes releases.

⁽²⁾Sentence is now a combination of Sentence and HB 1087 due to legislation passed in 2009.

COLORADO DEPARTMENT OF CORRECTIONS
ADULT INMATE RELEASES FROM PRISON

10/3/2011

Male Population Only

	Parole ⁽¹⁾							Discharge			Other				Total
	Discre- tionary	Mand- atory	Wknd. Mand.	Mand. Repar.	Wknd. Mand. Repar.	HB 1351 Early	Accl Trans	Sentence ⁽²⁾	Martin/ Cooper	Chgs/ Det.	Probation	Ct. Ord. Dschr.	Appeal Bond	Deceased	
Sep-11	172	100	94	79	55	66	0	92	1	14	7	4	0	3	687
Aug-11	242	110	94	116	54	77	0	79	2	12	3	2	0	1	792
Jul-11	166	94	88	117	49	63	0	70	3	17	4	5	0	3	679
FY 2012-Avg.	193	101	92	104	53	69	0	80	2	14	5	4	0	2	719
FY 2011-Avg.	146	125	98	110	67	76	0	89	2	15	7	5	0	4	744
FY 2010-Avg.	196	129	108	104	76	39	N/A	33	3	13	9	7	0	4	797
FY 2009-Avg.	294	167	N/A	80	N/A	N/A	N/A	31	5	15	10	9	0	4	786
FY 2008-Avg.	397	162	N/A	76	N/A	N/A	N/A	32	8	16	10	9	0	4	762
FY 2007-Avg.	359	175	N/A	77	N/A	N/A	N/A	29	9	15	11	8	0	4	733
FY 2006-Avg.	196	233	N/A	84	N/A	N/A	N/A	35	13	14	15	9	0	5	648

Female Population Only

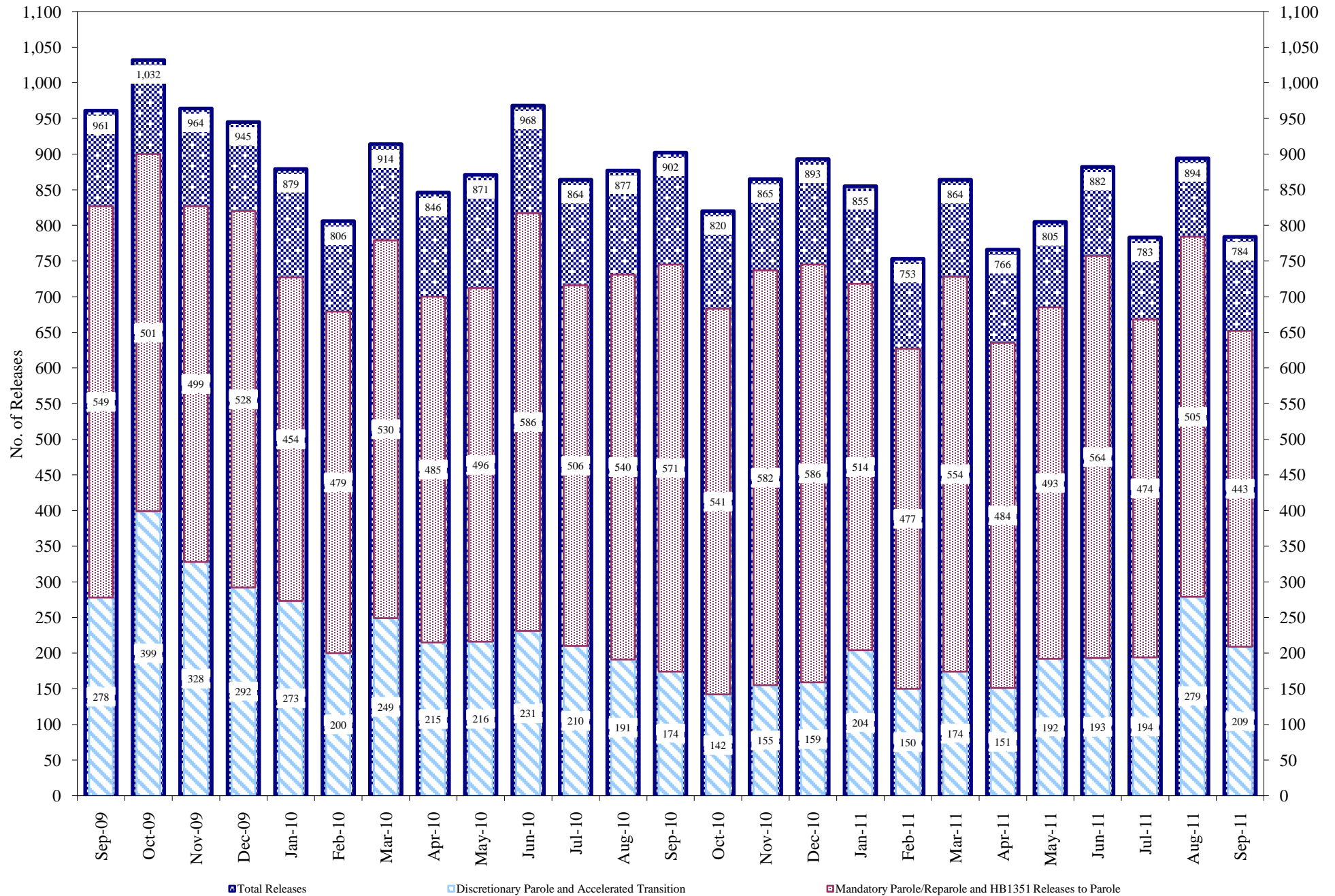
	Parole ⁽¹⁾							Discharge			Other				Total
	Discre- tionary	Mand- atory	Wknd. Mand.	Mand. Repar.	Wknd. Mand. Repar.	HB 1351 Early	Accl Trans	Sentence ⁽²⁾	Martin/ Cooper	Chgs/ Det.	Probation	Ct. Ord. Dschr.	Appeal Bond	Deceased	
Sep-11	37	8	10	13	10	8	0	8	0	0	3	0	0	0	97
Aug-11	37	13	6	17	10	8	0	8	0	1	1	1	0	0	102
Jul-11	28	15	11	18	7	12	0	10	0	2	1	0	0	0	104
FY 2012-Avg.	34	12	9	16	9	9	0	9	0	1	2	0	0	0	101
FY 2011-Avg.	28	13	9	16	9	12	0	11	0	1	1	1	0	0	101
FY 2010-Avg.	41	13	13	14	10	7	N/A	3	0	1	1	1	0	0	117
FY 2009-Avg.	49	21	N/A	13	N/A	N/A	N/A	3	0	2	2	1	0	0	112
FY 2008-Avg.	69	23	N/A	12	N/A	N/A	N/A	2	0	2	2	2	0	0	119
FY 2007-Avg.	63	23	N/A	11	N/A	N/A	N/A	2	0	1	2	1	0	0	109
FY 2006-Avg.	39	34	N/A	14	N/A	N/A	N/A	3	0	1	2	1	0	0	98

Definitions of Release Types

See previous page.

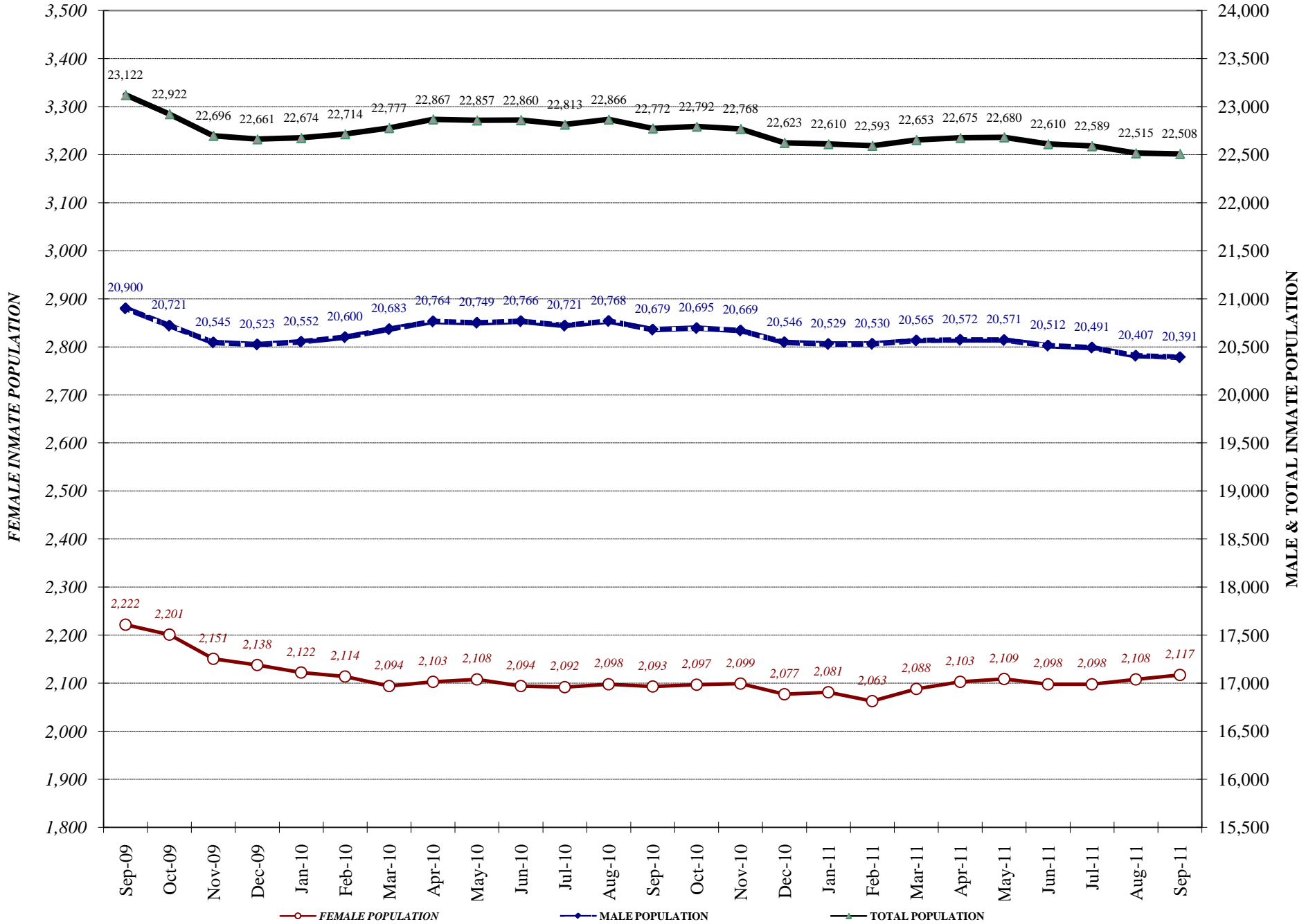
COLORADO DEPARTMENT OF CORRECTIONS

Adult Prison Releases

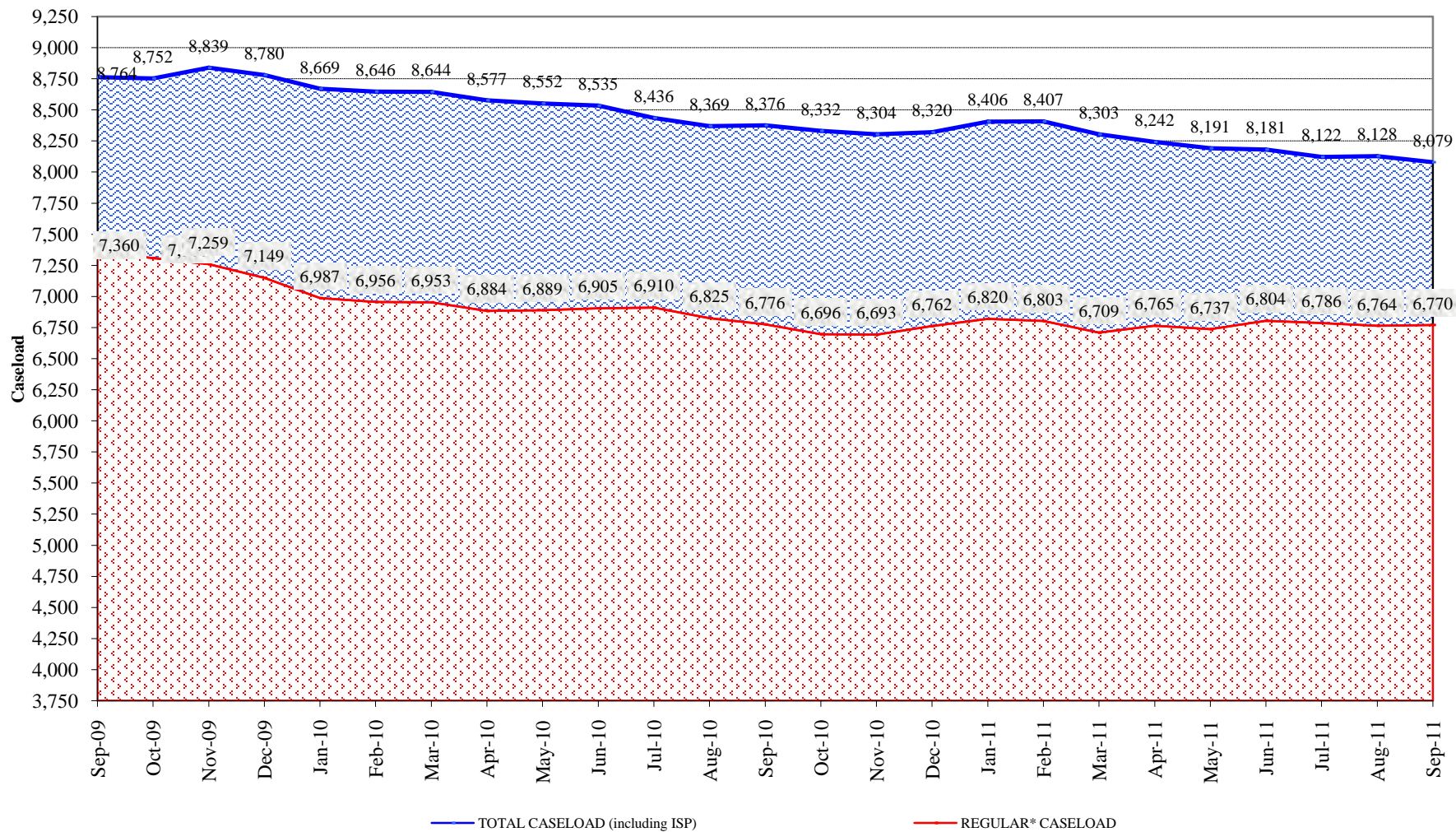


Total releases include releases to discretionary parole and accelerated transition, mandatory parole/reparole and HB1351, all types of discharges and other releases as detailed on the previous two pages.

COLORADO DEPARTMENT OF CORRECTIONS Adult Jurisdictional Inmate Population



COLORADO DEPARTMENT OF CORRECTIONS Parole Population



* Regular caseload includes interstate parole, but excludes out-of-state parolees and absconders.