

**COLORADO DEPARTMENT OF CORRECTIONS
MONTHLY POPULATION AND CAPACITY REPORT
as of July 31, 2011**

	7/31/11	7/31/11			2-Aug-11	
	OPERATIONAL CAPACITY ⁽¹⁾	ON-GRDS POPULATION	OFF-GRDS POPULATION	TOTAL POPULATION	OPERATIONAL CAPACITY ⁽¹⁾	ON-GRDS POPULATION
COLO STATE PENITENTIARY	756	750	1	751	756	752
CENTENNIAL CORR FAC	652	626	2	628	336	320
STERLING CORR FAC	2,545	2,514	8	2,522	2,545	2,518
LIMON CORR FAC	898	893	7	900	951	927
ARK VALLEY CORR FAC	1,007	1,001	12	1,013	1,007	997
BUENA VISTA CORR FAC	920	914	15	929	920	907
BUENA VISTA MIN CTR	304	299	0	299	292	288
COLO TERR CORR FAC	936	931	13	944	936	935
FORT LYON CORR FAC	500	358	13	371	500	483
FREMONT CORR FAC	1,661	1,638	5	1,643	1,661	1,639
LA VISTA CORR FAC	495	476	6	482	519	486
ARROWHEAD CORR CTR	506	497	4	501	494	490
FOUR MILE CORR CTR	507	503	0	503	499	496
TRINIDAD CORR FAC	484	480	2	482	484	480
S.T.U. at LA VISTA	30	17	1	18	30	15
SKYLINE CORR CTR	249	237	0	237	249	248
COLORADO CORR CTR	150	121	2	123	150	150
DELTA CORR CTR	484	433	2	435	484	468
RIFLE CORR CTR	192	174	0	174	192	186
DENVER WOMEN'S CORR FAC	976	947	11	958	976	961
DENVER REC DIAG CTR	542	530	11	541	480	507
SAN CARLOS CORR FAC	255	236	6	242	255	248
SUBTOTAL	15,049	14,575	121	14,696	14,716	14,501
CONTRACTS:						
BENT COUNTY CORR CTR		1,391	17	1,408		1,386
CROWLEY COUNTY CORR FAC		1,625	19	1,644		1,652
KIT CARSON COUNTY CORR FAC		807	7	814		985
CHEYENNE MTN REENTRY CTR		669	1	670		698
OFF-GROUNDS POPULATION:						
ESCAPEES/WALKAWAYS				224		229
REVOCATIONS-JAIL				0		0
JAIL BACKLOG:						
BACKLOG LESS THAN 72 HOURS			19		33	
BACKLOG GREATER THAN 72 HOURS (FISCAL YTD AVE =69)			41		92	
BACKLOG-PAROLEES AWAITING TRANSFER			38		92	
TOTAL JAIL BACKLOG			98			217
COUNTY JAIL CONTRACTS			43			66
COMMUNITY CENTERS						
PAROLE REVOCATIONS		1,649	88	1,737		1,717
REVOKED-RET TO CUST		1		1		0
REGRESSIONS		243	93	336		346
TOTAL COMM. CENTERS		1,893	302	2,195		2,132
ISP-INMATE						
REGRESSIONS		746	44	790		735
TOTAL ISP-INMATE		746	51	797		747
TOTAL COMM. CORRECTIONS		2,639	353	2,992		2,879
MALE POPULATION				20,491		20,721
FEMALE POPULATION				2,098		2,092
TOTAL INMATE JURISDICTIONAL POPULATION				22,589		22,813

⁽¹⁾OPERATIONAL CAPACITY INCLUDES ALL BEDS AVAILABLE FOR USE, INCLUDING MANAGEMENT CONTROL UNITS, BUT EXCLUDES EMERGENCY DOUBLE BUNKING.

COLORADO DEPARTMENT OF CORRECTIONS
MONTHLY POPULATION AND CAPACITY REPORT
as of July 31, 2011

2-Aug-11

CURRENT MONTH CHANGES IN CAPACITY:

La Vista Correctional Facility	Converting beds for male offenders	-24
--------------------------------	------------------------------------	-----

NET MONTHLY GROWTH RATE:

CURRENT MONTH	-21	
FISCAL YEAR-TO-DATE AVERAGE		-21

YOUTHFUL OFFENDER SYSTEM

	----- 7/31/11 -----			7/31/10
	PUEBLO	COMM. CORR.	TOTAL POPULATION	TOTAL POPULATION
INTAKE/IDO	9		9	5
RFP/REMEDICATION	16		16	8
PHASE I	179		179	193
PHASE II	14		14	9
PHASE III		49	49	36
OFF GROUNDS/BACKLOG			5	5
TOTAL Y.O.S. POPULATION	218	49	272	256

	CURRENT MONTH	FISCAL YR. TO DATE
YOS ADMISSIONS	7	7
YOS RELEASES:		
COMPLETION OF SENTENCE	4	4
JUDICIAL RELEASE TO PROB/CT ORD DISCHG	0	0
JUDICIAL TRANSFER TO DOC	0	0
TERMINATION/FAILURE	1	1
DECEASED	0	0
TOTAL RELEASES	5	5

PAROLE CASELOAD

	----- 7/31/11 -----			----- 6/30/11 -----		----- 7/31/10 -----	
	DOMESTIC	INTERST PAR/PROB	TOTAL CASELOAD	DOMESTIC	TOTAL CASELOAD	DOMESTIC	TOTAL CASELOAD
DENVER REGION							
REGULAR	2,591	42	2,633	2,574	2,653	2,561	2,645
ISP	583		583	581	581	698	698
SUBTOTAL	3,174	42	3,216	3,155	3,234	3,259	3,343
NORTHEAST REGION							
REGULAR	1,964	21	1,985	1,891	1,971	1,817	1,916
ISP	344		344	353	353	370	370
SUBTOTAL	2,308	21	2,329	2,244	2,324	2,187	2,286
SOUTHEAST REGION							
REGULAR	1,546	36	1,582	1,536	1,616	1,669	1,750
ISP	309		309	322	322	335	335
SUBTOTAL	1,855	36	1,891	1,858	1,938	2,004	2,085
WESTERN REGION							
REGULAR	585	1	586	517	564	546	599
ISP	100		100	121	121	123	123
SUBTOTAL	685	1	686	638	685	669	722
TOTAL CASELOAD							
REGULAR	6,686	100	6,786	6,518	6,804	6,593	6,910
ISP	1,336		1,336	1,377	1,377	1,526	1,526
TOTAL	8,022	100	8,122	7,895	8,181	8,119	8,436
ADDITIONAL CASELOAD:							
OUT-OF-STATE PAROLEES			1,921		1,922		2,092
PAROLEE ABSCONDERERS			590		593		724

**COLORADO DEPARTMENT OF CORRECTIONS
MONTHLY POPULATION AND CAPACITY REPORT**

as of July 31, 2011

		----- FINAL CUSTODY DESIGNATION -----							
		Uncls.	Ad.Seg	Close	Medium	Min.-Res.	Minimum	Total	
Male Population	COLO STATE PENITENTIARY		746	4			1	751	
	CENTENNIAL CORR FAC		477	142	7	1	1	628	
	STERLING CORR FAC		187	604	419	831	481	2,522	
	LIMON CORR FAC			680	166	37	17	900	
	ARK VALLEY CORR FAC		4	405	287	189	128	1,013	
	BUENA VISTA CORR FAC			445	345	100	39	929	
	BUENA VISTA MIN CTR				5	200	94	299	
	COLO TERR CORR FAC			193	339	266	146	944	
	FORT LYON CORR FAC			18	137	126	90	371	
	FREMONT CORR FAC		2	245	453	528	415	1,643	
	ARROWHEAD CORR CTR				1	305	195	501	
	FOUR MILE CORR CTR					352	151	503	
	TRINIDAD CORR FAC				4	422	56	482	
	S.T.U. LA VISTA				1	15	2	18	
	SKYLINE CORR CTR					1	236	237	
	COLORADO CORR CTR						123	123	
	DELTA CORR CTR				1	1	433	435	
	RIFLE CORR CTR						174	174	
	DENVER REC DIAG CTR		137	5	95	118	135	47	537
	SAN CARLOS CORR FAC			24	85	46	50	37	242
	CONTRACTS:								
	BENT COUNTY CORR CTR				6	807	402	193	1,408
	CROWLEY COUNTY CORR FAC				1	862	509	272	1,644
	KIT CARSON COUNTY CORR FAC				5	454	230	125	814
	CHEYENNE MTN REENTRY CTR				1	156	396	117	670
	COMMUNITY/ISP		2		10	41	101	1919	2,073
	Total Classified Male Population		139	1,445	2,939	4,649	5,197	5,492	19,861
	Percent of Total		0.7%	7.3%	14.8%	23.4%	26.2%	27.7%	
	Unclassified Facilities:								
	JAIL BACKLOG/REVOCATIONS								73
	COUNTY JAIL CONTRACTS								0
	REVOKED TO JAIL								0
REVOKED TO COMM CTR								1	
REVOKED-RET TO CUST FAC (77 off-grounds)								282	
COMM/ISP REGRESSIONS								81	
ESCAPEES/WALKAWAYS								193	
Total Unclassified Facilities								630	
Total Male Population								20,491	
Female Population	DENVER WOMEN'S CORR FAC	19	39	222	131	321	226	958	
	LA VISTA CORR FAC			41	80	190	171	482	
	DENVER REC DIAG CTR INF		1		2	1		4	
	COLO TERR CORR FAC INF.							0	
	COMMUNITY/ISP			2	3	15	434	454	
	Total Classified Female Population	19	40	265	216	527	831	1,898	
	Percent of Total	1.0%	2.1%	14.0%	11.4%	27.8%	43.8%		
	Unclassified Facilities:								
	JAIL BACKLOG/REVOCATIONS								25
	COUNTY JAIL CONTRACTS								43
	REVOKED TO JAIL								0
	REVOKED TO COMM CTR								0
REVOKED-RET TO CUST FAC (16 off-grounds)								54	
COMM/ISP REGRESSIONS								47	
ESCAPEES/WALKAWAYS								31	
Total Unclassified Facilities								200	
Total Female Population								2,098	
Total Classified Population		158	1,485	3,204	4,865	5,724	6,323	21,759	
Percent of Total		0.7%	6.8%	14.7%	22.4%	26.3%	29.1%		

COLORADO DEPARTMENT OF CORRECTIONS

ADULT INMATE JURISDICTIONAL POPULATION ⁽¹⁾

DATE: 8/2/2011

DATE	MALE POPULATION			FEMALE POPULATION			TOTAL POPULATION		
	Male Population	Net Change	Fiscal Y-T-D Average	Female Population	Net Change	Fiscal Y-T-D Average	Total Population	Net Change	Fiscal Y-T-D Average
07-31-11	20,491	-21	-21	2,098	0	0	22,589	-21	-21
06-30-11	20,512	-59		2,098	-11		22,610	-70	
05-31-11	20,571	-1		2,109	6		22,680	5	
04-30-11	20,572	7		2,103	15		22,675	22	
03-31-11	20,565	35		2,088	25		22,653	60	
02-28-11	20,530	1		2,063	-18		22,593	-17	
01-31-11	20,529	-17		2,081	4		22,610	-13	
12-31-10	20,546	-123	-21	2,077	-22	0	22,623	-145	-21
11-30-10	20,669	-26		2,099	2		22,768	-24	
10-31-10	20,695	16		2,097	4		22,792	20	
09-30-10	20,679	-89		2,093	-5		22,772	-94	
08-31-10	20,768	47		2,098	6		22,866	53	
07-31-10	20,721	-45		2,092	-2		22,813	-47	
06-30-10	20,766	17		2,094	-14		22,860	3	
05-31-10	20,749	-15		2,108	5		22,857	-10	
04-30-10	20,764	81		2,103	9		22,867	90	
03-31-10	20,683	83		2,094	-20		22,777	63	
02-28-10	20,600	48		2,114	-8		22,714	40	
01-31-10	20,552	29		2,122	-16		22,674	13	
12-31-09	20,523	-22	-11	2,138	-13	-16	22,661	-35	-27
11-30-09	20,545	-176		2,151	-50		22,696	-226	
10-31-09	20,721	-179		2,201	-21		22,922	-200	
09-30-09	20,900	-13		2,222	-43		23,122	-56	
08-31-09	20,913	-15		2,265	-27		23,178	-42	
07-31-09	20,928	32		2,292	2		23,220	34	
06-30-09	20,896		16	2,290		-1	23,186		15
06-30-08	20,684		42	2,305		-3	22,989		39
06-30-07	20,178		32	2,341		10	22,519		42
06-30-06	19,792		97	2,220		12	22,012		109
06-30-05	18,631		68	2,073		27	20,704		95
06-30-04	17,814		49	1,755		11	19,569		60
06-30-03	17,226		57	1,620		10	18,846		67
06-30-02	16,539		87	1,506		14	18,045		101
06-30-01	15,493		63	1,340		6	16,833		70
06-30-00	14,733		99	1,266		7	15,999		106
06-30-99	13,547		75	1,179		14	14,726		89
06-30-98	12,647			1,016			13,663		

⁽¹⁾ Adult inmate jurisdictional population includes on-grounds, off-grounds, out-of-state, escapees, and jail backlog and excludes offenders sentenced to the Youthful Offender System (YOS).

COLORADO DEPARTMENT OF CORRECTIONS
ADULT INMATE RELEASES FROM PRISON
TOTAL Population (Male and Female)

8/2/2011

	Parole ⁽¹⁾							Discharge			Other				Total
	Discretionary	Mandatory	Wknd. Mand.	Mand. Repar.	Wknd. Mand. Repar.	HB 1351 Early	Accl Trans	Sentence ⁽²⁾	Martin/Cooper	Chgs/Det.	Probation	Ct. Ord. Dsch.	Appeal Bond	Deceased	
Jul-11	194	109	99	135	56	75	0	80	3	19	5	5	0	3	783
Jun-11	193	124	113	121	83	123	0	90	1	15	9	3	0	7	882
May-11	192	137	111	90	82	73	0	84	2	21	5	3	2	3	805
Apr-11	151	148	88	113	53	82	0	104	2	10	6	5	0	4	766
Mar-11	174	151	103	136	65	99	0	107	1	13	6	5	1	3	864
Feb-11	150	142	116	75	74	70	0	100	1	9	6	5	0	5	753
Jan-11	204	122	126	123	64	79	0	102	1	16	10	5	0	3	855
Dec-10	159	164	104	153	81	84	0	109	5	13	8	4	0	9	893
Nov-10	155	135	115	158	81	93	0	90	4	17	7	3	1	6	865
Oct-10	142	137	104	138	82	80	0	98	1	17	11	5	0	5	820
Sep-10	174	142	92	148	106	83	0	114	4	22	11	2	0	4	902
Aug-10	191	142	113	131	62	92	0	102	5	19	9	8	0	3	877
Jul-10	210	114	104	121	77	90	1	100	1	19	9	14	0	4	864
FY 2012-Avg	194	109	99	135	56	75	N/A	80	3	19	5	5	0	3	783
FY 2011-Avg	175	138	107	126	76	87	0	100	2	16	8	5	0	5	846
FY 2010-Avg.	237	141	121	119	87	46	N/A	101	3	14	10	8	0	4	913
FY 2009-Avg.	343	188	N/A	93	N/A	N/A	N/A	97	5	17	12	10	0	4	898
FY 2008-Avg.	466	186	N/A	88	N/A	N/A	N/A	90	8	17	12	11	0	4	881
FY 2007-Avg.	422	198	N/A	89	N/A	N/A	N/A	81	10	16	13	9	0	4	843
FY 2006-Avg.	234	266	N/A	98	N/A	N/A	N/A	88	13	15	16	10	0	5	746

Definitions of Release Types

Discretionary parole-Released to parole through Parole Board discretion prior to mandatory release or sentence discharge date.

Mandatory parole-Released to parole on mandatory release date.

Wknd Mand.-Mandatory releases scheduled to release on a weekend; released a few days early under Parole Board authority.

Mand. Repar.-Reparoled on specific date set by Parole Board (includes S.B. 252 reparoles). n/a - breakout not available prior to June 2004.

Wknd Mand. Repar.-Mandatory Reparole releases scheduled to release on a weekend; released a few days early under Parole Board authority.

HB 1351 Early - Released to parole, subject to earn time provisions of H.B. 09-1351.

Accl Trans - Accelerated Transition released to parole prior to mandatory release by parole board based on program eligibility criteria.

Sentence discharge-Completion of sentence with no further supervision.

Martin/ Cooper discharge-Completion of sentence with no further supervision, sex offender subject to Martin/Cooper Supreme Court decision.

Chgs/ Det. discharge-Completion of sentence, released to other law enforcement for pending charges or detainees.

Probation-Released by court to probation.

Ct. Ord. Dsch.-Released by court order.

Appeal Bond-Released by court to appeal bond.

Deceased-Offender death in prison.

⁽¹⁾Due to the decrease in community transportation services, the Department implemented a procedural change in December 2005 with regards to releasing inmates on weekends. As a result, discretionary releases increased and mandatory releases decreased. However, beginning December 2008, the implementation of a new electronic coding system enabled these releases to be correctly classified as weekend mandatory parole and mandatory reparole releases.

⁽²⁾Sentence is now a combination of Sentence and HB 1087 due to legislation passed in 2009.

COLORADO DEPARTMENT OF CORRECTIONS
ADULT INMATE RELEASES FROM PRISON

8/2/2011

Male Population Only

	Parole ⁽¹⁾							Discharge			Other				Total
	Discretionary	Mandatory	Wknd. Mand.	Mand. Repar.	Wknd. Mand. Repar.	HB 1351 Early	Accel Trans	Sentence ⁽²⁾	Martin/Cooper	Chgs/Det.	Probation	Ct. Ord. Dsch.	Appeal Bond	Deceased	
Jul-11	166	94	88	117	49	63	0	70	3	17	4	5	0	3	679
Jun-11	163	110	101	106	72	103	0	82	1	13	5	3	0	5	764
May-11	160	124	102	81	72	63	0	77	2	21	5	3	1	2	713
Apr-11	128	135	75	98	48	69	0	94	2	10	5	5	0	4	673
Mar-11	144	142	95	122	59	89	0	95	1	13	4	4	1	3	772
Feb-11	121	120	107	69	60	59	0	90	1	7	4	4	0	5	647
Jan-11	176	113	113	107	59	70	0	93	1	15	8	3	0	3	761
Dec-10	135	148	94	129	71	75	0	95	5	12	7	4	0	8	783
Nov-10	133	125	106	137	70	82	0	80	4	16	4	3	1	6	767
Oct-10	115	127	95	115	72	65	0	89	1	15	11	5	0	5	715
Sep-10	148	130	87	134	97	72	0	99	4	20	11	1	0	4	807
Aug-10	154	125	104	114	53	81	0	93	5	18	8	8	0	3	766
Jul-10	177	105	97	105	71	79	0	85	1	17	9	13	0	3	762
FY 2012-Avg.	166	94	88	117	49	63	0	70	3	17	4	5	0	3	679
FY 2011-Avg.	146	125	98	110	67	76	0	89	2	15	7	5	0	4	744
FY 2010-Avg.	196	129	108	104	76	39	N/A	33	3	13	9	7	0	4	797
FY 2009-Avg.	294	167	N/A	80	N/A	N/A	N/A	31	5	15	10	9	0	4	786
FY 2008-Avg.	397	162	N/A	76	N/A	N/A	N/A	32	8	16	10	9	0	4	762
FY 2007-Avg.	359	175	N/A	77	N/A	N/A	N/A	29	9	15	11	8	0	4	733
FY 2006-Avg.	196	233	N/A	84	N/A	N/A	N/A	35	13	14	15	9	0	5	648

Female Population Only

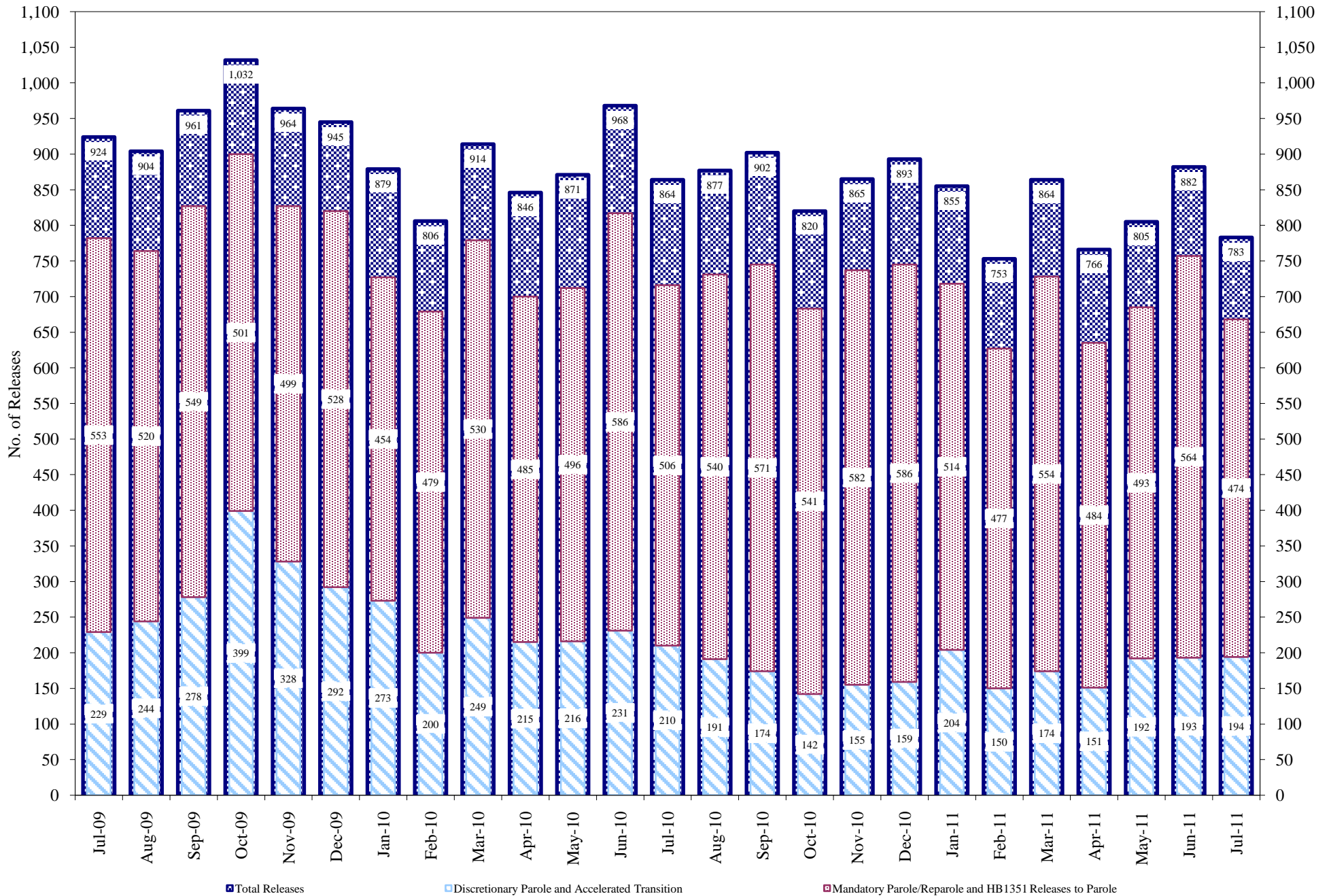
	Parole ⁽¹⁾							Discharge			Other				Total
	Discretionary	Mandatory	Wknd. Mand.	Mand. Repar.	Wknd. Mand. Repar.	HB 1351 Early	Accel Trans	Sentence ⁽²⁾	Martin/Cooper	Chgs/Det.	Probation	Ct. Ord. Dsch.	Appeal Bond	Deceased	
Jul-11	28	15	11	18	7	12	0	10	0	2	1	0	0	0	104
Jun-11	30	14	12	15	11	20	0	8	0	2	4	0	0	2	118
May-11	32	13	9	9	10	10	0	7	0	0	0	0	1	1	92
Apr-11	23	13	13	15	5	13	0	10	0	0	1	0	0	0	93
Mar-11	30	9	8	14	6	10	0	12	0	0	2	1	0	0	92
Feb-11	29	22	9	6	14	11	0	10	0	2	2	1	0	0	106
Jan-11	28	9	13	16	5	9	0	9	0	1	2	2	0	0	94
Dec-10	24	16	10	24	10	9	0	14	0	1	1	0	0	1	110
Nov-10	22	10	9	21	11	11	0	10	0	1	3	0	0	0	98
Oct-10	27	10	9	23	10	15	0	9	0	2	0	0	0	0	105
Sep-10	26	12	5	14	9	11	0	15	0	2	0	1	0	0	95
Aug-10	37	17	9	17	9	11	0	9	0	1	1	0	0	0	111
Jul-10	33	9	7	16	6	11	1	15	0	2	0	1	0	1	102
FY 2012-Avg.	28	15	11	18	7	12	0	10	0	2	1	0	0	0	104
FY 2011-Avg.	28	13	9	16	9	12	0	11	0	1	1	1	0	0	101
FY 2010-Avg.	41	13	13	14	10	7	N/A	3	0	1	1	1	0	0	117
FY 2009-Avg.	49	21	N/A	13	N/A	N/A	N/A	3	0	2	2	1	0	0	112
FY 2008-Avg.	69	23	N/A	12	N/A	N/A	N/A	2	0	2	2	2	0	0	119
FY 2007-Avg.	63	23	N/A	11	N/A	N/A	N/A	2	0	1	2	1	0	0	109
FY 2006-Avg.	39	34	N/A	14	N/A	N/A	N/A	3	0	1	2	1	0	0	98

Definitions of Release Types

See previous page.

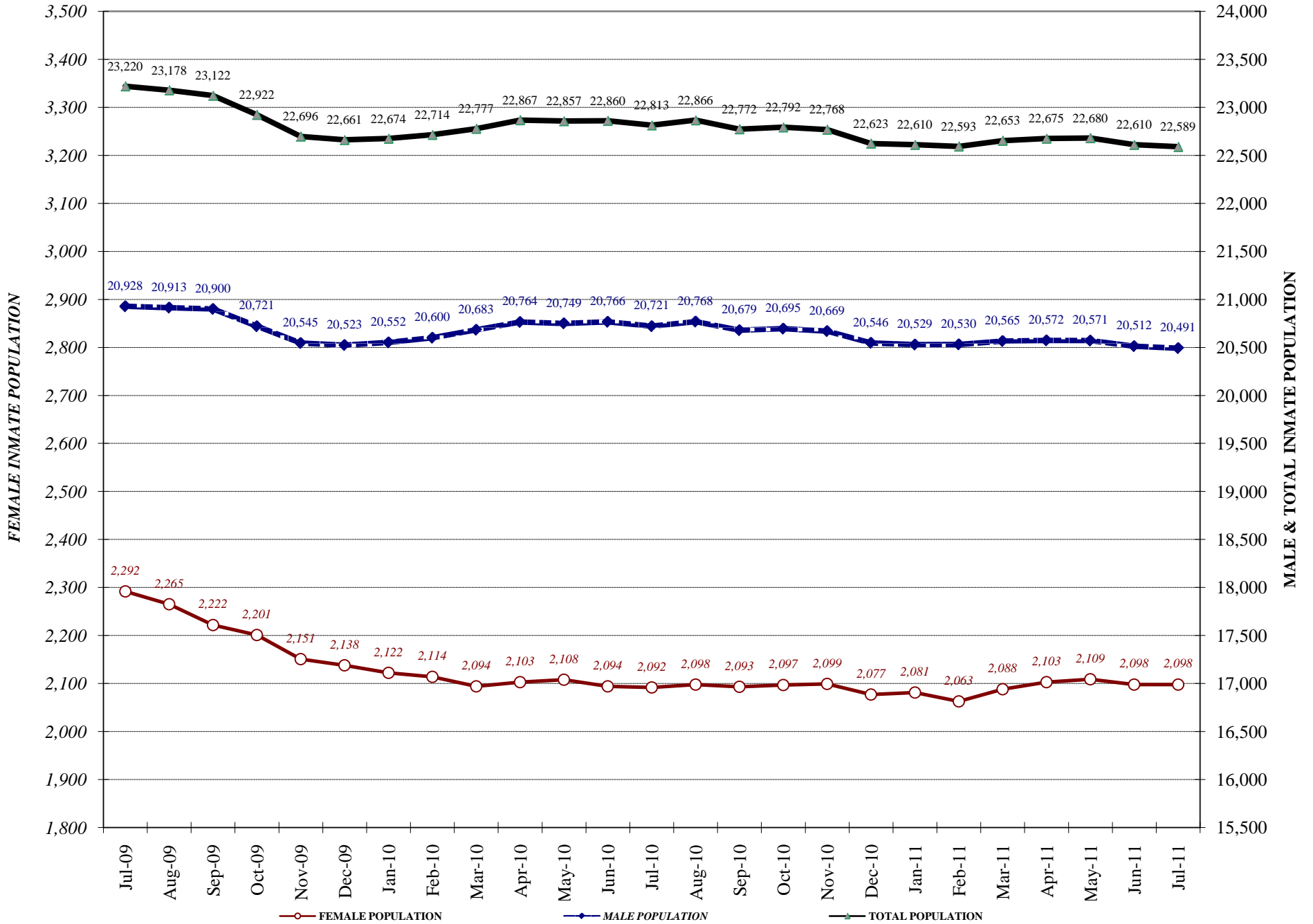
COLORADO DEPARTMENT OF CORRECTIONS

Adult Prison Releases

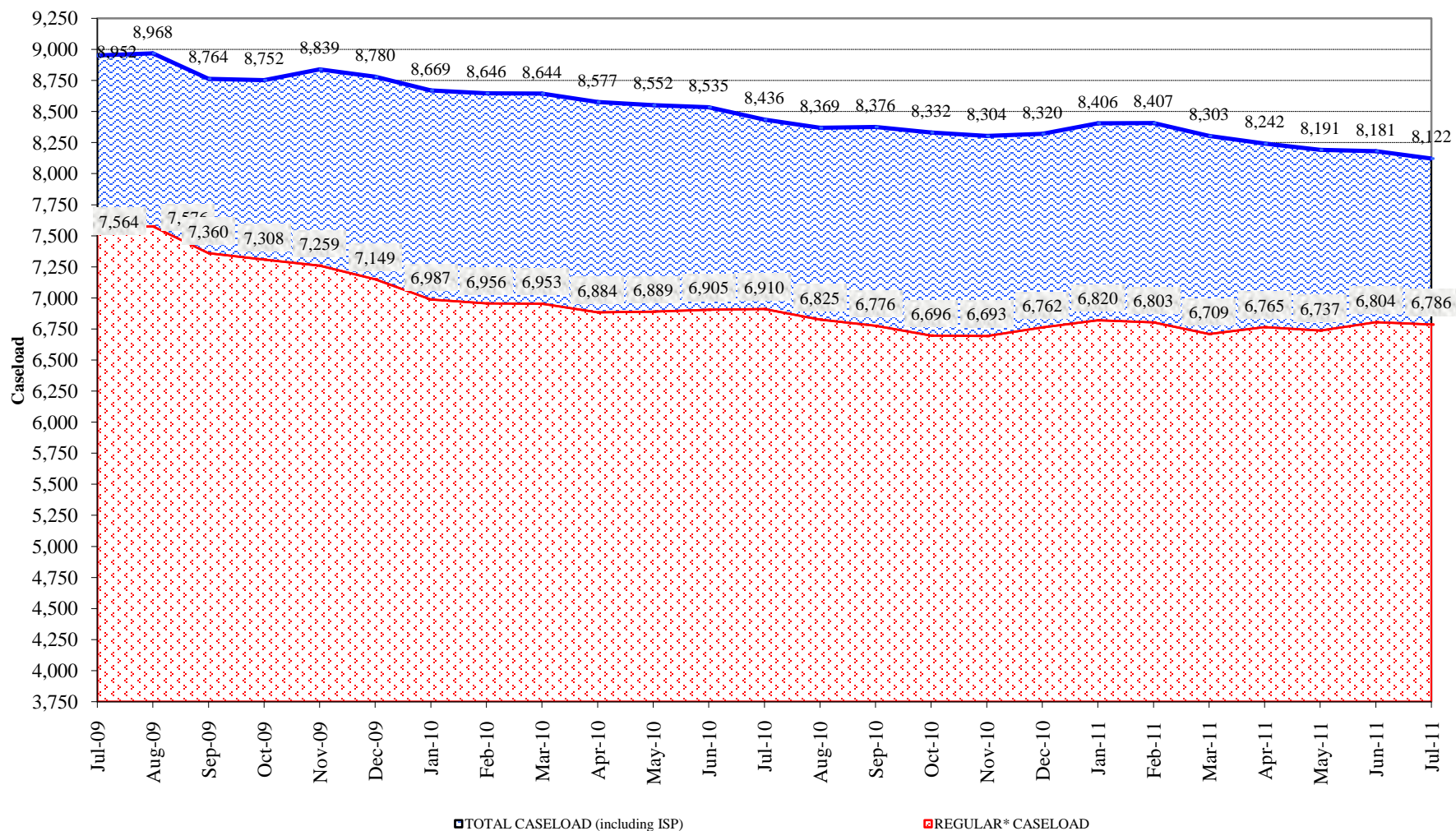


Total releases include releases to discretionary parole and accelerated transition, mandatory parole/reparole and HB1351, all types of discharges and other releases as detailed on the previous two pages.

COLORADO DEPARTMENT OF CORRECTIONS Adult Jurisdictional Inmate Population



COLORADO DEPARTMENT OF CORRECTIONS Parole Population



* Regular caseload includes interstate parole, but excludes out-of-state parolees and absconders.