

**COLORADO DEPARTMENT OF CORRECTIONS**  
**MONTHLY POPULATION AND CAPACITY REPORT**  
as of June 30, 2011

	6/30/11	6/30/11			6-Jul-11	
	OPERATIONAL	ON-GRDS	OFF-GRDS	TOTAL	OPERATIONAL	ON-GRDS
	CAPACITY <sup>(1)</sup>	POPULATION	POPULATION	POPULATION	CAPACITY <sup>(1)</sup>	POPULATION
COLO STATE PENITENTIARY	756	752	0	752	756	747
CENTENNIAL CORR FAC	652	621	0	621	336	317
STERLING CORR FAC	2,545	2,493	15	2,508	2,545	2,521
LIMON CORR FAC	898	887	7	894	951	945
ARK VALLEY CORR FAC	1,007	994	14	1,008	1,007	1,001
BUENA VISTA CORR FAC	920	913	13	926	920	913
BUENA VISTA MIN CTR	304	297	1	298	292	255
COLO TERR CORR FAC	936	919	11	930	936	905
FORT LYON CORR FAC	500	471	14	485	500	479
FREMONT CORR FAC	1,661	1,651	11	1,662	1,661	1,638
LA VISTA CORR FAC	519	512	9	521	519	514
ARROWHEAD CORR CTR	506	495	4	499	494	491
FOUR MILE CORR CTR	507	503	1	504	499	495
TRINIDAD CORR FAC	484	479	3	482	484	479
S.T.U. at LA VISTA	30	24	0	24	30	24
SKYLINE CORR CTR	249	242	2	244	249	249
COLORADO CORR CTR	150	125	3	128	150	150
DELTA CORR CTR	484	428	3	431	484	464
RIFLE CORR CTR	192	176	0	176	192	192
DENVER WOMEN'S CORR FAC	976	943	7	950	976	956
DENVER REC DIAG CTR	542	489	17	506	480	503
SAN CARLOS CORR FAC	255	241	7	248	255	249
<b>***SUBTOTAL***</b>	<b>15,073</b>	<b>14,655</b>	<b>142</b>	<b>14,797</b>	<b>14,716</b>	<b>14,487</b>
<b>CONTRACTS:</b>						
BENT COUNTY CORR CTR		1,300	17	1,317		1,385
CROWLEY COUNTY CORR FAC		1,570	20	1,590		1,641
KIT CARSON COUNTY CORR FAC		790	10	800		1,001
CHEYENNE MTN REENTRY CTR		688	4	692		713
<b>OFF-GROUNDS POPULATION:</b>						
ESCAPEES/WALKAWAYS				228		243
REVOCATIONS-JAIL				0		0
<b>JAIL BACKLOG:</b>						
BACKLOG LESS THAN 72 HOURS			57		89	
BACKLOG GREATER THAN 72 HOURS (FISCAL YTD AVE =97)			25		160	
BACKLOG-PAROLEES AWAITING TRANSFER			28		87	
TOTAL JAIL BACKLOG			110			336
<b>COUNTY JAIL CONTRACTS</b>			<b>29</b>			<b>0</b>
<b>COMMUNITY CENTERS</b>						
PAROLE REVOCATIONS		1,630	96	1,726		1,685
REVOKED-RET TO CUST		1		1		0
REGRESSIONS		231	131	362		347
			160	160		40
<b>TOTAL COMM. CENTERS</b>		<b>1,862</b>	<b>387</b>	<b>2,249</b>		<b>2,072</b>
<b>ISP-INMATE</b>						
REGRESSIONS		753	35	788		741
			10	10		5
<b>TOTAL ISP-INMATE</b>		<b>753</b>	<b>45</b>	<b>798</b>		<b>746</b>
<b>TOTAL COMM. CORRECTIONS</b>		<b>2,615</b>	<b>432</b>	<b>3,047</b>		<b>2,818</b>
MALE POPULATION				<b>20,512</b>		20,766
FEMALE POPULATION				<b>2,098</b>		2,094
<b>**TOTAL INMATE JURISDICTIONAL POPULATION**</b>				<b>22,610</b>		<b>22,860</b>

<sup>(1)</sup>OPERATIONAL CAPACITY INCLUDES ALL BEDS AVAILABLE FOR USE, INCLUDING MANAGEMENT CONTROL UNITS, BUT EXCLUDES EMERGENCY DOUBLE BUNKING.

**COLORADO DEPARTMENT OF CORRECTIONS**  
**MONTHLY POPULATION AND CAPACITY REPORT**  
as of June 30, 2011

6-Jul-11

**CURRENT MONTH CHANGES IN CAPACITY:**

Denver Reception and Diagnostic Center	Unit 5 expansion	+62 beds
Limon Correctional Facility	Reduction of beds	-53 beds
Arrowhead Corrections Center	Unit D and Unit E bed increase	+12 beds

**NET MONTHLY GROWTH RATE:**

CURRENT MONTH	-70
FISCAL YEAR-TO-DATE AVERAGE	-21

**YOUTHFUL OFFENDER SYSTEM**

	----- 6/30/11 -----			6/30/10
	PUEBLO	COMM. CORR.	TOTAL POPULATION	TOTAL POPULATION
INTAKE/IDO			0	9
RFP/REMEDICATION	13		13	8
PHASE I	187		187	185
PHASE II	14		14	9
PHASE III		49	49	36
OFF GROUNDS/BACKLOG			6	6
<b>**TOTAL Y.O.S. POPULATION**</b>	<b>214</b>	<b>49</b>	<b>269</b>	<b>253</b>

	CURRENT MONTH	FISCAL YR. TO DATE
YOS ADMISSIONS	5	68
YOS RELEASES:		
COMPLETION OF SENTENCE	3	34
JUDICIAL RELEASE TO PROB/CT ORD DISCHG	0	0
JUDICIAL TRANSFER TO DOC	0	0
TERMINATION/FAILURE	4	15
DECEASED	0	0
TOTAL RELEASES	7	49

**PAROLE CASELOAD**

	----- 6/30/11 -----			----- 5/31/11 -----		----- 6/30/10 -----	
	DOMESTIC	INTERST PAR/PROB	TOTAL CASELOAD	DOMESTIC	TOTAL CASELOAD	DOMESTIC	TOTAL CASELOAD
DENVER REGION							
REGULAR	2,574	79	2,653	2,520	2,599	2,552	2,631
ISP	<u>581</u>		<u>581</u>	<u>604</u>	<u>604</u>	<u>732</u>	<u>732</u>
SUBTOTAL	<u>3,155</u>	<u>79</u>	<u>3,234</u>	<u>3,124</u>	<u>3,203</u>	<u>3,284</u>	<u>3,363</u>
NORTHEAST REGION							
REGULAR	1,891	80	1,971	1,900	1,982	1,810	1,909
ISP	<u>353</u>		<u>353</u>	<u>370</u>	<u>370</u>	<u>405</u>	<u>405</u>
SUBTOTAL	<u>2,244</u>	<u>80</u>	<u>2,324</u>	<u>2,270</u>	<u>2,352</u>	<u>2,215</u>	<u>2,314</u>
SOUTHEAST REGION							
REGULAR	1,536	80	1,616	1,508	1,585	1,692	1,770
ISP	<u>322</u>		<u>322</u>	<u>355</u>	<u>355</u>	<u>351</u>	<u>351</u>
SUBTOTAL	<u>1,858</u>	<u>80</u>	<u>1,938</u>	<u>1,863</u>	<u>1,940</u>	<u>2,043</u>	<u>2,121</u>
WESTERN REGION							
REGULAR	517	47	564	527	571	544	595
ISP	<u>121</u>		<u>121</u>	<u>125</u>	<u>125</u>	<u>142</u>	<u>142</u>
SUBTOTAL	<u>638</u>	<u>47</u>	<u>685</u>	<u>652</u>	<u>696</u>	<u>686</u>	<u>737</u>
TOTAL CASELOAD							
REGULAR	6,518	286	6,804	6,455	6,737	6,598	6,905
ISP	<u>1,377</u>		<u>1,377</u>	<u>1,454</u>	<u>1,454</u>	<u>1,630</u>	<u>1,630</u>
TOTAL	<u>7,895</u>	<u>286</u>	<u>8,181</u>	<u>7,909</u>	<u>8,191</u>	<u>8,228</u>	<u>8,535</u>
ADDITIONAL CASELOAD:							
OUT-OF-STATE PAROLEES			1,922		1,914		2,100
PAROLEE ABSCONDERS			593		582		693

**COLORADO DEPARTMENT OF CORRECTIONS  
MONTHLY POPULATION AND CAPACITY REPORT**

as of June 30, 2011

		----- FINAL CUSTODY DESIGNATION -----						
		Uncls.	Ad.Seg	Close	Medium	Min.-Res.	Minimum	Total
<b>Male Population</b>	COLO STATE PENITENTIARY		746	4	1		1	752
	CENTENNIAL CORR FAC		452	159	7	2	1	621
	STERLING CORR FAC		176	624	420	794	494	2,508
	LIMON CORR FAC		3	671	168	36	16	894
	ARK VALLEY CORR FAC		4	395	293	192	124	1,008
	BUENA VISTA CORR FAC		3	435	352	95	41	926
	BUENA VISTA MIN CTR				1	204	93	298
	COLO TERR CORR FAC		3	192	317	252	166	930
	FORT LYON CORR FAC			21	225	143	96	485
	FREMONT CORR FAC		14	223	467	542	416	1,662
	ARROWHEAD CORR CTR				1	312	186	499
	FOUR MILE CORR CTR					351	153	504
	TRINIDAD CORR FAC					420	62	482
	S.T.U. LA VISTA				1	23		24
	SKYLINE CORR CTR					2	242	244
	COLORADO CORR CTR					2	126	128
	DELTA CORR CTR					1	430	431
	RIFLE CORR CTR					1	175	176
	DENVER REC DIAG CTR	90	8	92	155	119	38	502
	SAN CARLOS CORR FAC		25	91	42	52	38	248
	CONTRACTS:							
	BENT COUNTY CORR CTR			8	707	410	192	1,317
	CROWLEY COUNTY CORR FAC			1	809	507	273	1,590
	KIT CARSON COUNTY CORR FAC			7	439	231	123	800
	CHEYENNE MTN REENTRY CTR				158	407	127	692
	COMMUNITY/ISP			12	38	91	1938	2,079
	<b>Total Classified Male Population</b>	<b>90</b>	<b>1,434</b>	<b>2,935</b>	<b>4,601</b>	<b>5,189</b>	<b>5,551</b>	<b>19,800</b>
	<b>Percent of Total</b>	<b>0.5%</b>	<b>7.2%</b>	<b>14.8%</b>	<b>23.2%</b>	<b>26.2%</b>	<b>28.0%</b>	
	Unclassified Facilities:							
	JAIL BACKLOG/REVOCATIONS							92
	COUNTY JAIL CONTRACTS							0
	REVOKED TO JAIL							0
REVOKED TO COMM CTR							1	
REVOKED-RET TO CUST FAC (113 off-grounds)							308	
COMM/ISP REGRESSIONS							120	
ESCAPEES/WALKAWAYS							191	
<b>Total Unclassified Facilities</b>							<b>712</b>	
<b>Total Male Population</b>							<b>20,512</b>	
<b>Female Population</b>	DENVER WOMEN'S CORR FAC	26	42	216	126	323	217	950
	LA VISTA CORR FAC		1	39	79	209	193	521
	DENVER REC DIAG CTR INF				2	2		4
	COLO TERR CORR FAC INF.							0
	COMMUNITY/ISP			6	3	16	410	435
	<b>Total Classified Female Population</b>	<b>26</b>	<b>43</b>	<b>261</b>	<b>210</b>	<b>550</b>	<b>820</b>	<b>1,910</b>
	<b>Percent of Total</b>	<b>1.4%</b>	<b>2.3%</b>	<b>13.7%</b>	<b>11.0%</b>	<b>28.8%</b>	<b>42.9%</b>	
	Unclassified Facilities:							
	JAIL BACKLOG/REVOCATIONS							18
	COUNTY JAIL CONTRACTS							29
	REVOKED TO JAIL							0
	REVOKED TO COMM CTR							0
	REVOKED-RET TO CUST FAC (18 off-grounds)							54
COMM/ISP REGRESSIONS							50	
ESCAPEES/WALKAWAYS							37	
<b>Total Unclassified Facilities</b>							<b>188</b>	
<b>Total Female Population</b>							<b>2,098</b>	
<b>Total Classified Population</b>	<b>116</b>	<b>1,477</b>	<b>3,196</b>	<b>4,811</b>	<b>5,739</b>	<b>6,371</b>	<b>21,710</b>	
<b>Percent of Total</b>	<b>0.5%</b>	<b>6.8%</b>	<b>14.7%</b>	<b>22.2%</b>	<b>26.4%</b>	<b>29.3%</b>		

**COLORADO DEPARTMENT OF CORRECTIONS**

ADULT INMATE JURISDICTIONAL POPULATION <sup>(1)</sup>

DATE: 7/6/2011

DATE	MALE POPULATION			FEMALE POPULATION			TOTAL POPULATION		
	Male Population	Net Change	Fiscal Y-T-D Average	Female Population	Net Change	Fiscal Y-T-D Average	Total Population	Net Change	Fiscal Y-T-D Average
<b>06-30-11</b>	<b>20,512</b>	<b>-59</b>		<b>2,098</b>	<b>-11</b>		<b>22,610</b>	<b>-70</b>	
05-31-11	20,571	-1		2,109	6		22,680	5	
04-30-11	20,572	7		2,103	15		22,675	22	
03-31-11	20,565	35		2,088	25		22,653	60	
02-28-11	20,530	1		2,063	-18		22,593	-17	
01-31-11	20,529	-17		2,081	4		22,610	-13	
12-31-10	20,546	-123	<b>-21</b>	2,077	-22	<b>0</b>	22,623	-145	<b>-21</b>
11-30-10	20,669	-26		2,099	2		22,768	-24	
10-31-10	20,695	16		2,097	4		22,792	20	
09-30-10	20,679	-89		2,093	-5		22,772	-94	
08-31-10	20,768	47		2,098	6		22,866	53	
07-31-10	20,721	-45		2,092	-2		22,813	-47	
<b>06-30-10</b>	<b>20,766</b>	<b>17</b>		<b>2,094</b>	<b>-14</b>		<b>22,860</b>	<b>3</b>	
05-31-10	20,749	-15		2,108	5		22,857	-10	
04-30-10	20,764	81		2,103	9		22,867	90	
03-31-10	20,683	83		2,094	-20		22,777	63	
02-28-10	20,600	48		2,114	-8		22,714	40	
01-31-10	20,552	29		2,122	-16		22,674	13	
12-31-09	20,523	-22	<b>-11</b>	2,138	-13	<b>-16</b>	22,661	-35	<b>-27</b>
11-30-09	20,545	-176		2,151	-50		22,696	-226	
10-31-09	20,721	-179		2,201	-21		22,922	-200	
09-30-09	20,900	-13		2,222	-43		23,122	-56	
08-31-09	20,913	-15		2,265	-27		23,178	-42	
07-31-09	20,928	32		2,292	2		23,220	34	
<b>06-30-09</b>	<b>20,896</b>	<b>51</b>		<b>2,290</b>	<b>18</b>		<b>23,186</b>	<b>69</b>	
05-31-09	20,845	-46		2,272	-16		23,117	-62	
04-30-09	20,891	41		2,288	-14		23,179	27	
03-31-09	20,850	36		2,302	17		23,152	53	
02-28-09	20,814	-16		2,285	-32		23,099	-48	
01-31-09	20,830	1		2,317	2		23,147	3	
12-31-08	20,829	-32	<b>16</b>	2,315	-8	<b>-1</b>	23,144	-40	<b>15</b>
11-30-08	20,861	41		2,323	-17		23,184	24	
10-31-08	20,820	85		2,340	9		23,160	94	
09-30-08	20,735	-33		2,331	27		23,066	-6	
08-31-08	20,768	87		2,304	-10		23,072	77	
07-31-08	20,681	-3		2,314	9		22,995	6	
<b>06-30-08</b>	<b>20,684</b>		<b>42</b>	<b>2,305</b>		<b>-3</b>	<b>22,989</b>		<b>39</b>
<b>06-30-07</b>	<b>20,178</b>		<b>32</b>	<b>2,341</b>		<b>10</b>	<b>22,519</b>		<b>42</b>
<b>06-30-06</b>	<b>19,792</b>		<b>97</b>	<b>2,220</b>		<b>12</b>	<b>22,012</b>		<b>109</b>
<b>06-30-05</b>	<b>18,631</b>		<b>68</b>	<b>2,073</b>		<b>27</b>	<b>20,704</b>		<b>95</b>
<b>06-30-04</b>	<b>17,814</b>		<b>49</b>	<b>1,755</b>		<b>11</b>	<b>19,569</b>		<b>60</b>
<b>06-30-03</b>	<b>17,226</b>		<b>57</b>	<b>1,620</b>		<b>10</b>	<b>18,846</b>		<b>67</b>
<b>06-30-02</b>	<b>16,539</b>		<b>87</b>	<b>1,506</b>		<b>14</b>	<b>18,045</b>		<b>101</b>
<b>06-30-01</b>	<b>15,493</b>		<b>63</b>	<b>1,340</b>		<b>6</b>	<b>16,833</b>		<b>70</b>
<b>06-30-00</b>	<b>14,733</b>		<b>99</b>	<b>1,266</b>		<b>7</b>	<b>15,999</b>		<b>106</b>
<b>06-30-99</b>	<b>13,547</b>		<b>75</b>	<b>1,179</b>		<b>14</b>	<b>14,726</b>		<b>89</b>
<b>06-30-98</b>	<b>12,647</b>			<b>1,016</b>			<b>13,663</b>		

<sup>(1)</sup> Adult inmate jurisdictional population includes on-grounds, off-grounds, out-of-state, escapees, and jail backlog and excludes offenders sentenced to the Youthful Offender System (YOS).

**COLORADO DEPARTMENT OF CORRECTIONS**  
**ADULT INMATE RELEASES FROM PRISON**  
**TOTAL Population (Male and Female)**

7/6/2011

	Parole <sup>(1)</sup>							Discharge			Other				Total
	Discretionary	Mandatory	Wknd. Mand.	Mand. Repar.	Wknd. Mand. Repar.	HB 1351 Early	Accl Trans	Sentence <sup>(2)</sup>	Martin/Cooper	Chgs/Det.	Probation	Ct. Ord. Dsch.	Appeal Bond	Deceased	
Jun-11	193	124	113	121	83	123	0	90	1	15	9	3	0	7	882
May-11	192	137	111	90	82	73	0	84	2	21	5	3	2	3	805
Apr-11	151	148	88	113	53	82	0	104	2	10	6	5	0	4	766
Mar-11	174	151	103	136	65	99	0	107	1	13	6	5	1	3	864
Feb-11	150	142	116	75	74	70	0	100	1	9	6	5	0	5	753
Jan-11	204	122	126	123	64	79	0	102	1	16	10	5	0	3	855
Dec-10	159	164	104	153	81	84	0	109	5	13	8	4	0	9	893
Nov-10	155	135	115	158	81	93	0	90	4	17	7	3	1	6	865
Oct-10	142	137	104	138	82	80	0	98	1	17	11	5	0	5	820
Sep-10	174	142	92	148	106	83	0	114	4	22	11	2	0	4	902
Aug-10	191	142	113	131	62	92	0	102	5	19	9	8	0	3	877
Jul-10	210	114	104	121	77	90	1	100	1	19	9	14	0	4	864
FY 2011-Avg	175	138	107	126	76	87	N/A	100	2	16	8	5	0	5	846
FY 2010-Avg.	237	141	121	119	87	46	N/A	101	3	14	10	8	0	4	913
FY 2009-Avg.	343	188	N/A	93	N/A	N/A	N/A	97	5	17	12	10	0	4	898
FY 2008-Avg.	466	186	N/A	88	N/A	N/A	N/A	90	8	17	12	11	0	4	881
FY 2007-Avg.	422	198	N/A	89	N/A	N/A	N/A	81	10	16	13	9	0	4	843
FY 2006-Avg.	234	266	N/A	98	N/A	N/A	N/A	88	13	15	16	10	0	5	746

Definitions of Release Types

**Discretionary parole**-Released to parole through Parole Board discretion prior to mandatory release or sentence discharge date.

**Mandatory parole**-Released to parole on mandatory release date.

**Wknd Mand.**-Mandatory releases scheduled to release on a weekend; released a few days early under Parole Board authority.

**Mand. Repar.**-Reparoled on specific date set by Parole Board (includes S.B. 252 reparoles). n/a - breakout not available prior to June 2004.

**Wknd Mand. Repar.**-Mandatory Reparole releases scheduled to release on a weekend; released a few days early under Parole Board authority.

**HB 1351 Early** - Released to parole, subject to earn time provisions of H.B. 09-1351.

**Accl Trans** - Accelerated Transition released to parole prior to mandatory release by parole board based on program eligibility criteria.

**Sentence discharge**-Completion of sentence with no further supervision.

**Martin/ Cooper discharge**-Completion of sentence with no further supervision, sex offender subject to Martin/Cooper Supreme Court decision.

**Chgs/ Det. discharge**-Completion of sentence, released to other law enforcement for pending charges or detainees.

**Probation**-Released by court to probation.

**Ct. Ord. Dsch.**-Released by court order.

**Appeal Bond**-Released by court to appeal bond.

**Deceased**-Offender death in prison.

<sup>(1)</sup>Due to the decrease in community transportation services, the Department implemented a procedural change in December 2005 with regards to releasing inmates on weekends. As a result, discretionary releases increased and mandatory releases decreased. However, beginning December 2008, the implementation of a new electronic coding system enabled these releases to be correctly classified as weekend mandatory parole and mandatory reparole releases.

<sup>(2)</sup>Sentence is now a combination of Sentence and HB 1087 due to legislation passed in 2009.

**COLORADO DEPARTMENT OF CORRECTIONS**  
ADULT INMATE RELEASES FROM PRISON

7/6/2011

**Male Population Only**

	Parole <sup>(1)</sup>							Discharge			Other				Total
	Discre- tionary	Mand- atory	Wknd. Mand.	Mand. Repar.	Wknd. Mand. Repar.	HB 1351 Early	Accl Trans	Sentence <sup>(2)</sup>	Martin/ Cooper	Chgs/ Det.	Probation	Ct. Ord. Dsch.	Appeal Bond	Deceased	
Jun-11	163	110	101	106	72	103	0	82	1	13	5	3	0	5	764
May-11	160	124	102	81	72	63	0	77	2	21	5	3	1	2	713
Apr-11	128	135	75	98	48	69	0	94	2	10	5	5	0	4	673
Mar-11	144	142	95	122	59	89	0	95	1	13	4	4	1	3	772
Feb-11	121	120	107	69	60	59	0	90	1	7	4	4	0	5	647
Jan-11	176	113	113	107	59	70	0	93	1	15	8	3	0	3	761
Dec-10	135	148	94	129	71	75	0	95	5	12	7	4	0	8	783
Nov-10	133	125	106	137	70	82	0	80	4	16	4	3	1	6	767
Oct-10	115	127	95	115	72	65	0	89	1	15	11	5	0	5	715
Sep-10	148	130	87	134	97	72	0	99	4	20	11	1	0	4	807
Aug-10	154	125	104	114	53	81	0	93	5	18	8	8	0	3	766
Jul-10	177	105	97	105	71	79	0	85	1	17	9	13	0	3	762
FY 2011-Avg.	146	125	98	110	67	76	0	89	2	15	7	5	0	4	744
FY 2010-Avg.	196	129	108	104	76	39	N/A	33	3	13	9	7	0	4	797
FY 2009-Avg.	294	167	N/A	80	N/A	N/A	N/A	31	5	15	10	9	0	4	786
FY 2008-Avg.	397	162	N/A	76	N/A	N/A	N/A	32	8	16	10	9	0	4	762
FY 2007-Avg.	359	175	N/A	77	N/A	N/A	N/A	29	9	15	11	8	0	4	733
FY 2006-Avg.	196	233	N/A	84	N/A	N/A	N/A	35	13	14	15	9	0	5	648

**Female Population Only**

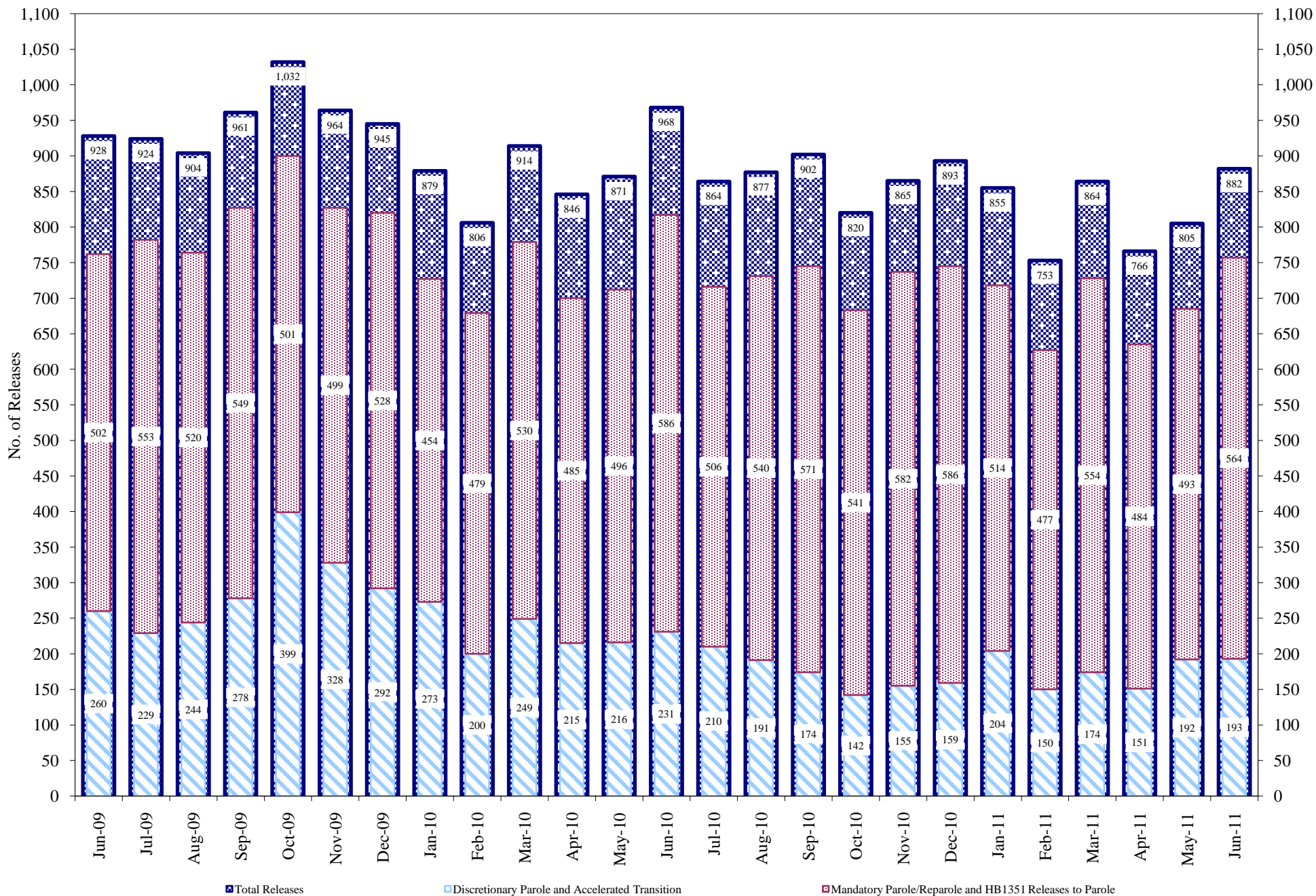
	Parole <sup>(1)</sup>							Discharge			Other				Total
	Discre- tionary	Mand- atory	Wknd. Mand.	Mand. Repar.	Wknd. Mand. Repar.	HB 1351 Early	Accl Trans	Sentence <sup>(2)</sup>	Martin/ Cooper	Chgs/ Det.	Probation	Ct. Ord. Dsch.	Appeal Bond	Deceased	
Jun-11	30	14	12	15	11	20	0	8	0	2	4	0	0	2	118
May-11	32	13	9	9	10	10	0	7	0	0	0	0	1	1	92
Apr-11	23	13	13	15	5	13	0	10	0	0	1	0	0	0	93
Mar-11	30	9	8	14	6	10	0	12	0	0	2	1	0	0	92
Feb-11	29	22	9	6	14	11	0	10	0	2	2	1	0	0	106
Jan-11	28	9	13	16	5	9	0	9	0	1	2	2	0	0	94
Dec-10	24	16	10	24	10	9	0	14	0	1	1	0	0	1	110
Nov-10	22	10	9	21	11	11	0	10	0	1	3	0	0	0	98
Oct-10	27	10	9	23	10	15	0	9	0	2	0	0	0	0	105
Sep-10	26	12	5	14	9	11	0	15	0	2	0	1	0	0	95
Aug-10	37	17	9	17	9	11	0	9	0	1	1	0	0	0	111
Jul-10	33	9	7	16	6	11	1	15	0	2	0	1	0	1	102
FY 2011-Avg.	28	13	9	16	9	12	0	11	0	1	1	1	0	0	101
FY 2010-Avg.	41	13	13	14	10	7	N/A	3	0	1	1	1	0	0	117
FY 2009-Avg.	49	21	N/A	13	N/A	N/A	N/A	3	0	2	2	1	0	0	112
FY 2008-Avg.	69	23	N/A	12	N/A	N/A	N/A	2	0	2	2	2	0	0	119
FY 2007-Avg.	63	23	N/A	11	N/A	N/A	N/A	2	0	1	2	1	0	0	109
FY 2006-Avg.	39	34	N/A	14	N/A	N/A	N/A	3	0	1	2	1	0	0	98

Definitions of Release Types

See previous page.

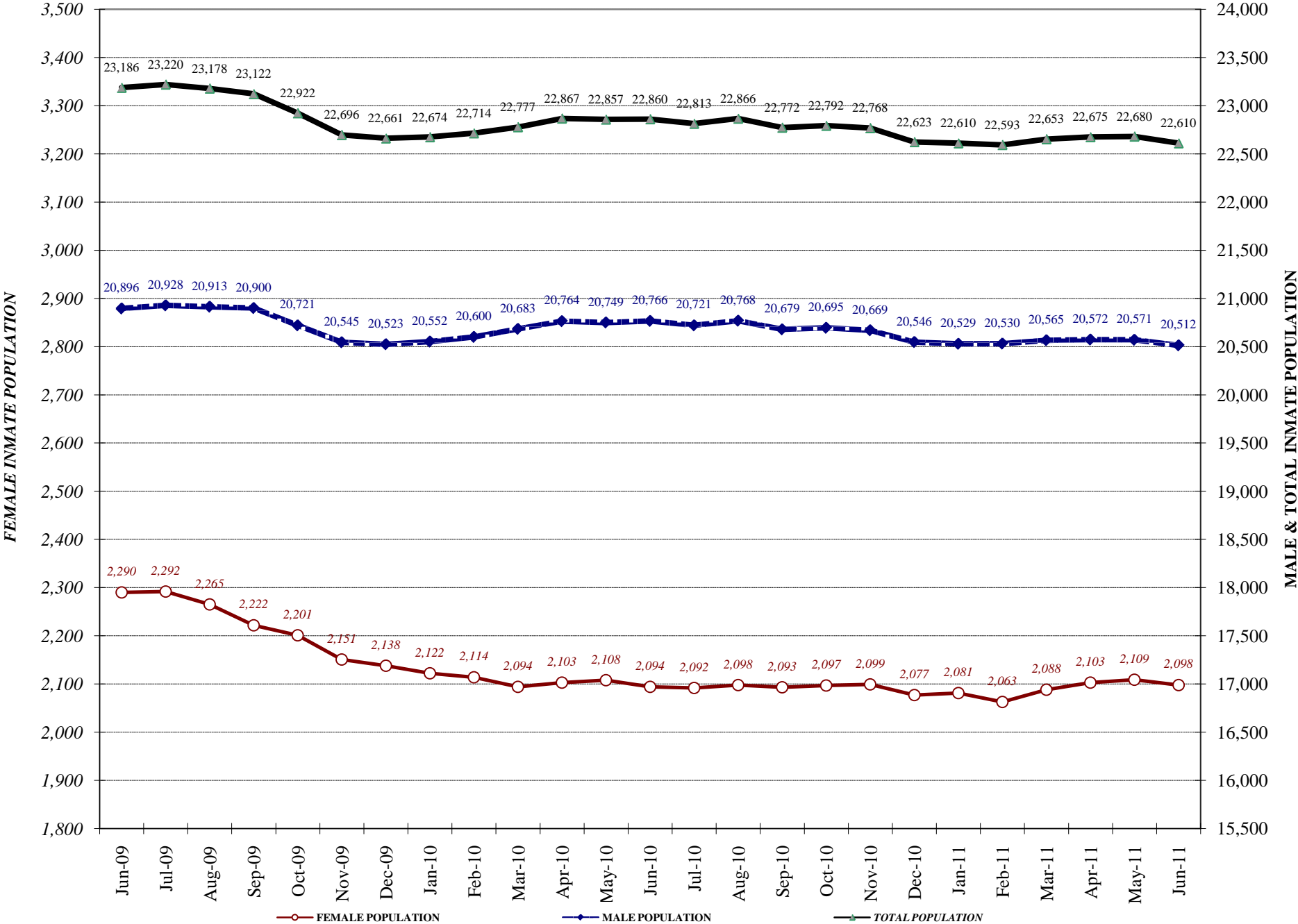
# COLORADO DEPARTMENT OF CORRECTIONS

## Adult Prison Releases



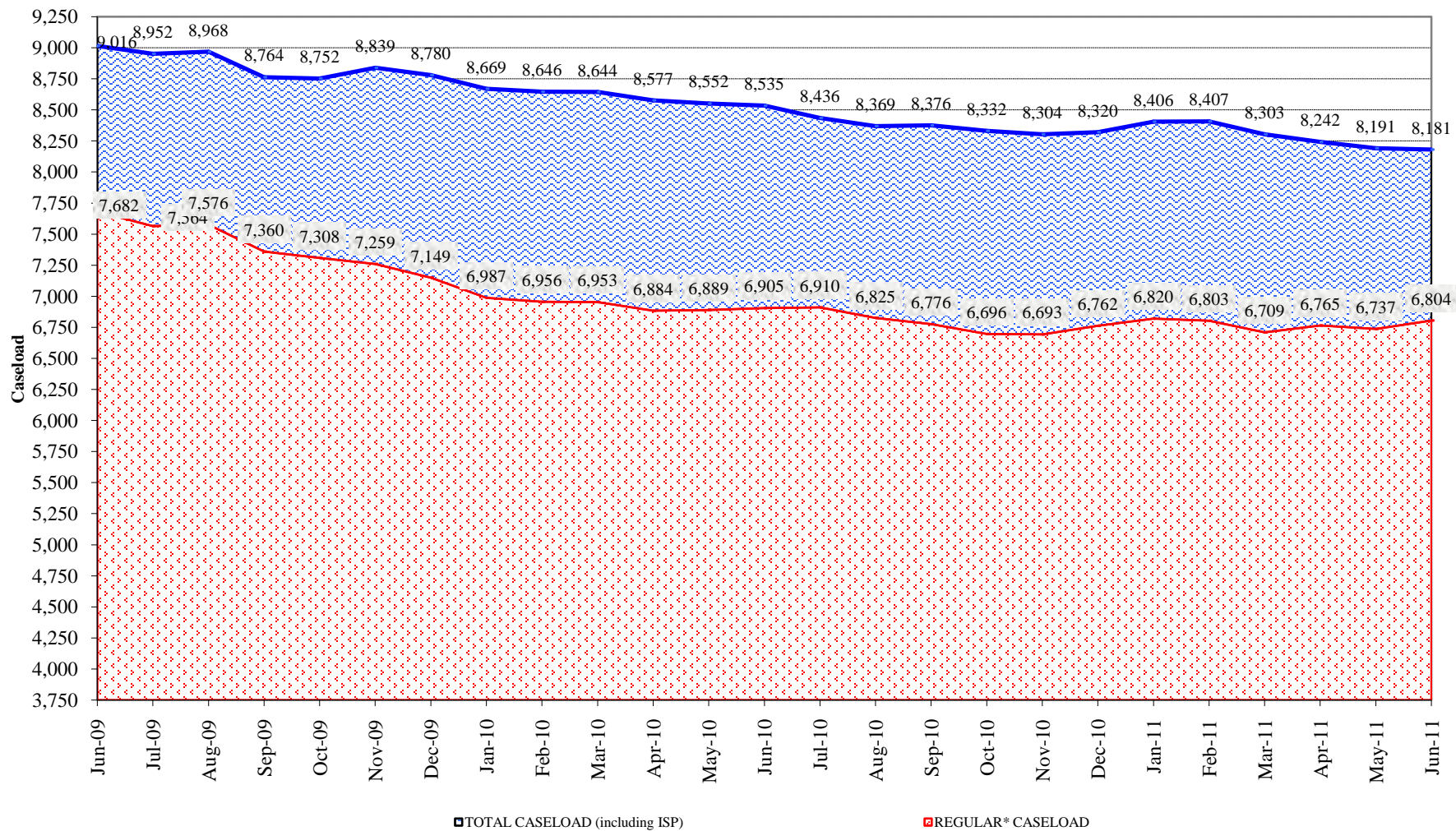
Total releases include releases to discretionary parole and accelerated transition, mandatory parole/reparole and HB1351, all types of discharges and other releases as detailed on the previous two pages.

# COLORADO DEPARTMENT OF CORRECTIONS Adult Jurisdictional Inmate Population





## COLORADO DEPARTMENT OF CORRECTIONS Parole Population



\* Regular caseload includes interstate parole, but excludes out-of-state parolees and absconders.