

**COLORADO DEPARTMENT OF CORRECTIONS  
MONTHLY POPULATION AND CAPACITY REPORT  
as of May 31, 2011**

	5/31/11	5/31/11			2-Jun-11	
	OPERATIONAL CAPACITY <sup>(1)</sup>	ON-GRDS POPULATION	OFF-GRDS POPULATION	TOTAL POPULATION	OPERATIONAL CAPACITY <sup>(1)</sup>	ON-GRDS POPULATION
COLO STATE PENITENTIARY	756	749	2	751	756	745
CENTENNIAL CORR FAC	652	619	1	620	336	304
STERLING CORR FAC	2,545	2,497	18	2,515	2,545	2,529
LIMON CORR FAC	951	945	2	947	951	940
ARK VALLEY CORR FAC	1,007	999	13	1,012	1,007	997
BUENA VISTA CORR FAC	920	908	20	928	920	868
BUENA VISTA MIN CTR	304	274	21	295	292	286
COLO TERR CORR FAC	936	912	8	920	936	906
FORT LYON CORR FAC	500	478	11	489	500	480
FREMONT CORR FAC	1,661	1,651	11	1,662	1,661	1,621
LA VISTA CORR FAC	519	512	4	516	519	419
ARROWHEAD CORR CTR	494	489	4	493	494	489
FOUR MILE CORR CTR	507	486	19	505	499	486
TRINIDAD CORR FAC	484	469	2	471	484	478
S.T.U. at LA VISTA	30	24	1	25	30	19
SKYLINE CORR CTR	249	244	0	244	249	248
COLORADO CORR CTR	150	141	1	142	150	149
DELTA CORR CTR	484	459	2	461	484	454
RIFLE CORR CTR	192	187	0	187	192	185
DENVER WOMEN'S CORR FAC	976	956	13	969	976	887
DENVER REC DIAG CTR	480	459	18	477	480	498
SAN CARLOS CORR FAC	255	242	8	250	255	248
<b>***SUBTOTAL***</b>	<b>15,052</b>	<b>14,700</b>	<b>179</b>	<b>14,879</b>	<b>14,716</b>	<b>14,236</b>
<b>CONTRACTS:</b>						
BENT COUNTY CORR CTR		1,275	17	1,292		1,423
CROWLEY COUNTY CORR FAC		1,576	20	1,596		1,663
KIT CARSON COUNTY CORR FAC		785	7	792		1,032
CHEYENNE MTN REENTRY CTR		693	4	697		663
HIGH PLAINS CORR FAC		0	0	0		203
<b>OFF-GROUNDS POPULATION:</b>						
ESCAPEES/WALKAWAYS				227		235
REVOCATIONS-JAIL				0		232
<b>JAIL BACKLOG:</b>						
BACKLOG LESS THAN 72 HOURS			30		0	
BACKLOG GREATER THAN 72 HOURS (FISCAL YTD AVE =97)			70		262	
BACKLOG-PAROLEES AWAITING TRANSFER			27		99	
<b>TOTAL JAIL BACKLOG</b>			<b>127</b>			<b>361</b>
<b>COUNTY JAIL CONTRACTS</b>			<b>27</b>			<b>20</b>
<b>COMMUNITY CENTERS</b>						
PAROLE REVOCATIONS		1,619	122	1,741		1,685
REVOKED-RET TO CUST		1		1		0
REGRESSIONS		251	102	353		327
<b>TOTAL COMM. CENTERS</b>		<b>1,871</b>	<b>366</b>	<b>2,237</b>		<b>2,019</b>
<b>ISP-INMATE</b>						
REGRESSIONS		755	35	790		769
<b>TOTAL ISP-INMATE</b>		<b>755</b>	<b>51</b>	<b>806</b>		<b>770</b>
<b>TOTAL COMM. CORRECTIONS</b>		<b>2,626</b>	<b>417</b>	<b>3,043</b>		<b>2,789</b>
MALE POPULATION				<b>20,571</b>		20,749
FEMALE POPULATION				<b>2,109</b>		2,108
<b>**TOTAL INMATE JURISDICTIONAL POPULATION**</b>				<b>22,680</b>		<b>22,857</b>

<sup>(1)</sup>OPERATIONAL CAPACITY INCLUDES ALL BEDS AVAILABLE FOR USE, INCLUDING MANAGEMENT CONTROL UNITS, BUT EXCLUDES EMERGENCY DOUBLE BUNKING.

**COLORADO DEPARTMENT OF CORRECTIONS**  
**MONTHLY POPULATION AND CAPACITY REPORT**  
as of May 31, 2011

2-Jun-11

**CURRENT MONTH CHANGES IN CAPACITY:**

Buena Vista Minimum Center	Completion of T-building capacity expansion	+4 beds
Four Mile Correctional Center	Completion of T-building capacity expansion	+8 beds

**NET MONTHLY GROWTH RATE:**

CURRENT MONTH	5
FISCAL YEAR-TO-DATE AVERAGE	-16

**YOUTHFUL OFFENDER SYSTEM**

	----- 5/31/11 -----			5/31/10
	PUEBLO	COMM. CORR.	TOTAL POPULATION	TOTAL POPULATION
INTAKE/IDO	6		6	3
RFP/REMEDICATION	18		18	13
PHASE I	176		176	185
PHASE II	21		21	14
PHASE III		44	44	29
OFF GROUNDS/BACKLOG			7	7
<b>**TOTAL Y.O.S. POPULATION**</b>	<b>221</b>	<b>44</b>	<b>272</b>	<b>251</b>

	CURRENT MONTH	FISCAL YR. TO DATE
YOS ADMISSIONS	4	63
YOS RELEASES:		
COMPLETION OF SENTENCE	2	31
JUDICIAL RELEASE TO PROB/CT ORD DISCHG	0	0
JUDICIAL TRANSFER TO DOC	0	0
TERMINATION/FAILURE	2	11
DECEASED	0	0
TOTAL RELEASES	4	42

**PAROLE CASELOAD**

	----- 5/31/11 -----			----- 4/30/11 -----		----- 5/31/10 -----	
	DOMESTIC	INTERST PAR/PROB	TOTAL CASELOAD	DOMESTIC	TOTAL CASELOAD	DOMESTIC	TOTAL CASELOAD
DENVER REGION							
REGULAR	2,520	79	2,599	2,501	2,577	2,525	2,597
ISP	604		604	625	625	741	741
SUBTOTAL	3,124	79	3,203	3,126	3,202	3,266	3,338
NORTHEAST REGION							
REGULAR	1,900	82	1,982	1,901	1,987	1,812	1,913
ISP	370		370	364	364	426	426
SUBTOTAL	2,270	82	2,352	2,265	2,351	2,238	2,339
SOUTHEAST REGION							
REGULAR	1,508	77	1,585	1,531	1,604	1,713	1,793
ISP	355		355	368	368	349	349
SUBTOTAL	1,863	77	1,940	1,899	1,972	2,062	2,142
WESTERN REGION							
REGULAR	527	44	571	550	597	536	586
ISP	125		125	120	120	147	147
SUBTOTAL	652	44	696	670	717	683	733
TOTAL CASELOAD							
REGULAR	6,455	282	6,737	6,483	6,765	6,586	6,889
ISP	1,454		1,454	1,477	1,477	1,663	1,663
TOTAL	7,909	282	8,191	7,960	8,242	8,249	8,552
ADDITIONAL CASELOAD:							
OUT-OF-STATE PAROLEES			1,914		1,947		2,101
PAROLEE ABSCONDERS			582		613		667



**COLORADO DEPARTMENT OF CORRECTIONS**

ADULT INMATE JURISDICTIONAL POPULATION <sup>(1)</sup>

DATE: 6/2/2011

DATE	MALE POPULATION			FEMALE POPULATION			TOTAL POPULATION		
	Male Population	Net Change	Fiscal Y-T-D Average	Female Population	Net Change	Fiscal Y-T-D Average	Total Population	Net Change	Fiscal Y-T-D Average
<b>05-31-11</b>	<b>20,571</b>	<b>-1</b>		<b>2,109</b>	<b>6</b>		<b>22,680</b>	<b>5</b>	
04-30-11	20,572	7		2,103	15		22,675	22	
03-31-11	20,565	35		2,088	25		22,653	60	
02-28-11	20,530	1		2,063	-18		22,593	-17	
01-31-11	20,529	-17		2,081	4		22,610	-13	
12-31-10	20,546	-123	<b>-18</b>	2,077	-22	<b>1</b>	22,623	-145	<b>-16</b>
11-30-10	20,669	-26		2,099	2		22,768	-24	
10-31-10	20,695	16		2,097	4		22,792	20	
09-30-10	20,679	-89		2,093	-5		22,772	-94	
08-31-10	20,768	47		2,098	6		22,866	53	
07-31-10	20,721	-45		2,092	-2		22,813	-47	
<b>06-30-10</b>	<b>20,766</b>	<b>17</b>		<b>2,094</b>	<b>-14</b>		<b>22,860</b>	<b>3</b>	
05-31-10	20,749	-15		2,108	5		22,857	-10	
04-30-10	20,764	81		2,103	9		22,867	90	
03-31-10	20,683	83		2,094	-20		22,777	63	
02-28-10	20,600	48		2,114	-8		22,714	40	
01-31-10	20,552	29		2,122	-16		22,674	13	
12-31-09	20,523	-22	<b>-11</b>	2,138	-13	<b>-16</b>	22,661	-35	<b>-27</b>
11-30-09	20,545	-176		2,151	-50		22,696	-226	
10-31-09	20,721	-179		2,201	-21		22,922	-200	
09-30-09	20,900	-13		2,222	-43		23,122	-56	
08-31-09	20,913	-15		2,265	-27		23,178	-42	
07-31-09	20,928	32		2,292	2		23,220	34	
<b>06-30-09</b>	<b>20,896</b>	<b>51</b>		<b>2,290</b>	<b>18</b>		<b>23,186</b>	<b>69</b>	
05-31-09	20,845	-46		2,272	-16		23,117	-62	
04-30-09	20,891	41		2,288	-14		23,179	27	
03-31-09	20,850	36		2,302	17		23,152	53	
02-28-09	20,814	-16		2,285	-32		23,099	-48	
01-31-09	20,830	1		2,317	2		23,147	3	
12-31-08	20,829	-32	<b>16</b>	2,315	-8	<b>-1</b>	23,144	-40	<b>15</b>
11-30-08	20,861	41		2,323	-17		23,184	24	
10-31-08	20,820	85		2,340	9		23,160	94	
09-30-08	20,735	-33		2,331	27		23,066	-6	
08-31-08	20,768	87		2,304	-10		23,072	77	
07-31-08	20,681	-3		2,314	9		22,995	6	
<b>06-30-08</b>	<b>20,684</b>		<b>42</b>	<b>2,305</b>		<b>-3</b>	<b>22,989</b>		<b>39</b>
<b>06-30-07</b>	<b>20,178</b>		<b>32</b>	<b>2,341</b>		<b>10</b>	<b>22,519</b>		<b>42</b>
<b>06-30-06</b>	<b>19,792</b>		<b>97</b>	<b>2,220</b>		<b>12</b>	<b>22,012</b>		<b>109</b>
<b>06-30-05</b>	<b>18,631</b>		<b>68</b>	<b>2,073</b>		<b>27</b>	<b>20,704</b>		<b>95</b>
<b>06-30-04</b>	<b>17,814</b>		<b>49</b>	<b>1,755</b>		<b>11</b>	<b>19,569</b>		<b>60</b>
<b>06-30-03</b>	<b>17,226</b>		<b>57</b>	<b>1,620</b>		<b>10</b>	<b>18,846</b>		<b>67</b>
<b>06-30-02</b>	<b>16,539</b>		<b>87</b>	<b>1,506</b>		<b>14</b>	<b>18,045</b>		<b>101</b>
<b>06-30-01</b>	<b>15,493</b>		<b>63</b>	<b>1,340</b>		<b>6</b>	<b>16,833</b>		<b>70</b>
<b>06-30-00</b>	<b>14,733</b>		<b>99</b>	<b>1,266</b>		<b>7</b>	<b>15,999</b>		<b>106</b>
<b>06-30-99</b>	<b>13,547</b>		<b>75</b>	<b>1,179</b>		<b>14</b>	<b>14,726</b>		<b>89</b>
<b>06-30-98</b>	<b>12,647</b>			<b>1,016</b>			<b>13,663</b>		

<sup>(1)</sup> Adult inmate jurisdictional population includes on-grounds, off-grounds, out-of-state, escapees, and jail backlog and excludes offenders sentenced to the Youthful Offender System (YOS).

**COLORADO DEPARTMENT OF CORRECTIONS**  
**ADULT INMATE RELEASES FROM PRISON**  
**TOTAL Population (Male and Female)**

6/2/2011

	Parole <sup>(1)</sup>							Discharge			Other				Total
	Discretionary	Mandatory	Wknd. Mand.	Mand. Repar.	Wknd. Mand. Repar.	HB 1351 Early	Accl Trans	Sentence <sup>(2)</sup>	Martin/Cooper	Chgs/Det.	Probation	Ct. Ord. Dsch.	Appeal Bond	Deceased	
May-11	192	137	111	90	82	73	0	84	2	21	5	3	2	3	805
Apr-11	151	148	88	113	53	82	0	104	2	10	6	5	0	4	766
Mar-11	174	151	103	136	65	99	0	107	1	13	6	5	1	3	864
Feb-11	150	142	116	75	74	70	0	100	1	9	6	5	0	5	753
Jan-11	204	122	126	123	64	79	0	102	1	16	10	5	0	3	855
Dec-10	159	164	104	153	81	84	0	109	5	13	8	4	0	9	893
Nov-10	155	135	115	158	81	93	0	90	4	17	7	3	1	6	865
Oct-10	142	137	104	138	82	80	0	98	1	17	11	5	0	5	820
Sep-10	174	142	92	148	106	83	0	114	4	22	11	2	0	4	902
Aug-10	191	142	113	131	62	92	0	102	5	19	9	8	0	3	877
Jul-10	210	114	104	121	77	90	1	100	1	19	9	14	0	4	864
FY 2011-Avg	173	139	107	126	75	84	N/A	101	2	16	8	5	0	4	842
FY 2010-Avg.	237	141	121	119	87	46	N/A	101	3	14	10	8	0	4	913
FY 2009-Avg.	343	188	N/A	93	N/A	N/A	N/A	97	5	17	12	10	0	4	898
FY 2008-Avg.	466	186	N/A	88	N/A	N/A	N/A	90	8	17	12	11	0	4	881
FY 2007-Avg.	422	198	N/A	89	N/A	N/A	N/A	81	10	16	13	9	0	4	843
FY 2006-Avg.	234	266	N/A	98	N/A	N/A	N/A	88	13	15	16	10	0	5	746

Definitions of Release Types

**Discretionary parole**-Released to parole through Parole Board discretion prior to mandatory release or sentence discharge date.

**Mandatory parole**-Released to parole on mandatory release date.

**Wknd Mand.**-Mandatory releases scheduled to release on a weekend; released a few days early under Parole Board authority.

**Mand. Repar.**-Reparoled on specific date set by Parole Board (includes S.B. 252 reparaes). n/a - breakout not available prior to June 2004.

**Wknd Mand. Repar.**-Mandatory Reparole releases scheduled to release on a weekend; released a few days early under Parole Board authority.

**HB 1351 Early** - Released to parole, subject to earn time provisions of H.B. 09-1351.

**Accl Trans** - Accelerated Transition released to parole prior to mandatory release by parole board based on program eligibility criteria.

**Sentence discharge**-Completion of sentence with no further supervision.

**Martin/ Cooper discharge**-Completion of sentence with no further supervision, sex offender subject to Martin/Cooper Supreme Court decision.

**Chgs/ Det. discharge**-Completion of sentence, released to other law enforcement for pending charges or detainees.

**Probation**-Released by court to probation.

**Ct. Ord. Dsch.**-Released by court order.

**Appeal Bond**-Released by court to appeal bond.

**Deceased**-Offender death in prison.

<sup>(1)</sup>Due to the decrease in community transportation services, the Department implemented a procedural change in December 2005 with regards to releasing inmates on weekends. As a result, discretionary releases increased and mandatory releases decreased. However, beginning December 2008, the implementation of a new electronic coding system enabled these releases to be correctly classified as weekend mandatory parole and mandatory reparole releases.

<sup>(2)</sup>Sentence is now a combination of Sentence and HB 1087 due to legislation passed in 2009.

**COLORADO DEPARTMENT OF CORRECTIONS**  
ADULT INMATE RELEASES FROM PRISON

6/2/2011

**Male Population Only**

	Parole <sup>(1)</sup>							Discharge			Other				Total
	Discre- tionary	Mand- atory	Wknd. Mand.	Mand. Repar.	Wknd. Mand. Repar.	HB 1351 Early	Accl Trans	Sentence <sup>(2)</sup>	Martin/ Cooper	Chgs/ Det.	Probation	Ct. Ord. Dsch.	Appeal Bond	Deceased	
May-11	160	124	102	81	72	63	0	77	2	21	5	3	1	2	713
Apr-11	128	135	75	98	48	69	0	94	2	10	5	5	0	4	673
Mar-11	144	142	95	122	59	89	0	95	1	13	4	4	1	3	772
Feb-11	121	120	107	69	60	59	0	90	1	7	4	4	0	5	647
Jan-11	176	113	113	107	59	70	0	93	1	15	8	3	0	3	761
Dec-10	135	148	94	129	71	75	0	95	5	12	7	4	0	8	783
Nov-10	133	125	106	137	70	82	0	80	4	16	4	3	1	6	767
Oct-10	115	127	95	115	72	65	0	89	1	15	11	5	0	5	715
Sep-10	148	130	87	134	97	72	0	99	4	20	11	1	0	4	807
Aug-10	154	125	104	114	53	81	0	93	5	18	8	8	0	3	766
Jul-10	177	105	97	105	71	79	0	85	1	17	9	13	0	3	762
FY 2011-Avg.	145	127	98	110	67	73	0	90	2	15	7	5	0	4	742
FY 2010-Avg.	196	129	108	104	76	39	N/A	33	3	13	9	7	0	4	797
FY 2009-Avg.	294	167	N/A	80	N/A	N/A	N/A	31	5	15	10	9	0	4	786
FY 2008-Avg.	397	162	N/A	76	N/A	N/A	N/A	32	8	16	10	9	0	4	762
FY 2007-Avg.	359	175	N/A	77	N/A	N/A	N/A	29	9	15	11	8	0	4	733
FY 2006-Avg.	196	233	N/A	84	N/A	N/A	N/A	35	13	14	15	9	0	5	648

**Female Population Only**

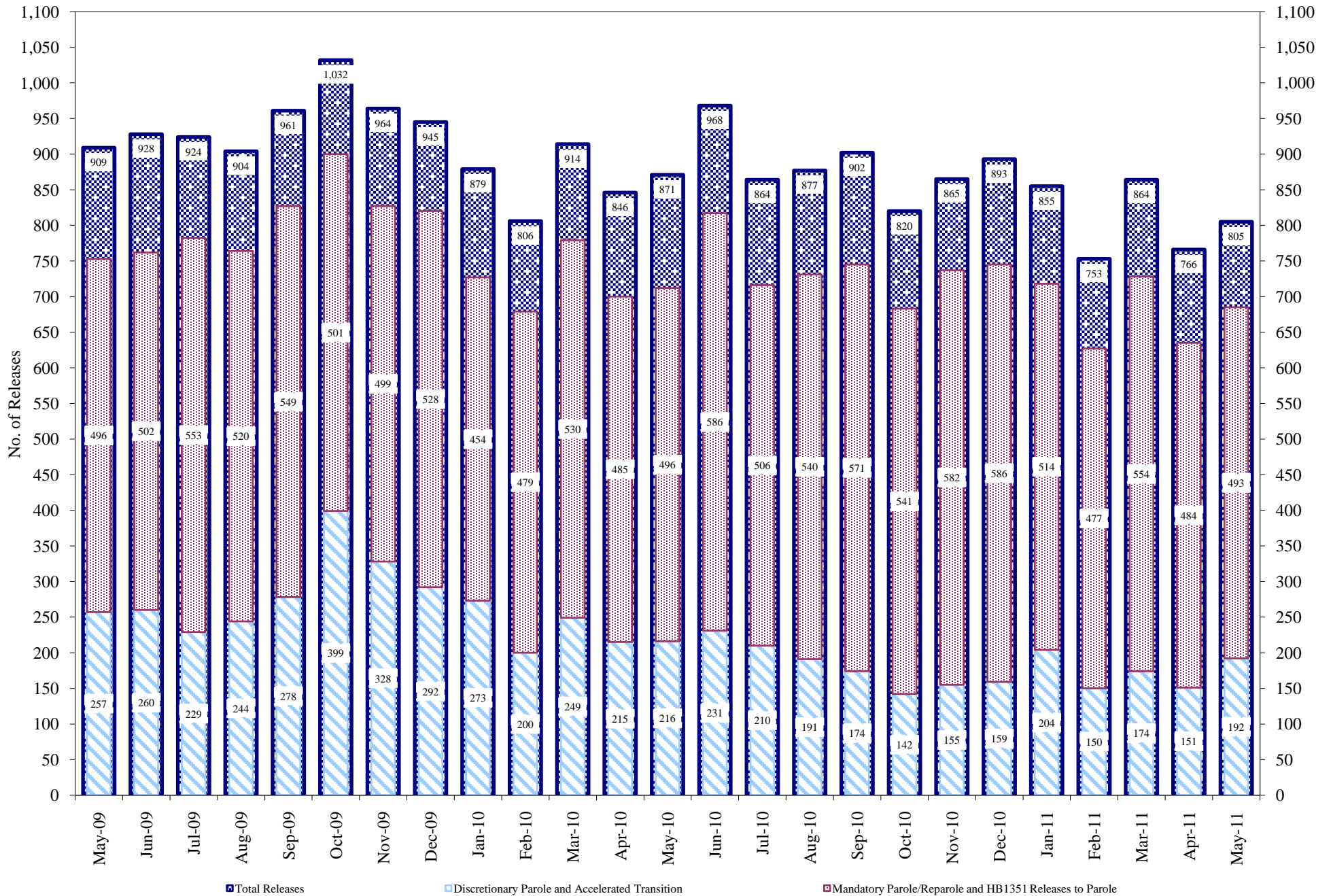
	Parole <sup>(1)</sup>							Discharge			Other				Total
	Discre- tionary	Mand- atory	Wknd. Mand.	Mand. Repar.	Wknd. Mand. Repar.	HB 1351 Early	Accl Trans	Sentence <sup>(2)</sup>	Martin/ Cooper	Chgs/ Det.	Probation	Ct. Ord. Dsch.	Appeal Bond	Deceased	
May-11	32	13	9	9	10	10	0	7	0	0	0	0	1	1	92
Apr-11	23	13	13	15	5	13	0	10	0	0	1	0	0	0	93
Mar-11	30	9	8	14	6	10	0	12	0	0	2	1	0	0	92
Feb-11	29	22	9	6	14	11	0	10	0	2	2	1	0	0	106
Jan-11	28	9	13	16	5	9	0	9	0	1	2	2	0	0	94
Dec-10	24	16	10	24	10	9	0	14	0	1	1	0	0	1	110
Nov-10	22	10	9	21	11	11	0	10	0	1	3	0	0	0	98
Oct-10	27	10	9	23	10	15	0	9	0	2	0	0	0	0	105
Sep-10	26	12	5	14	9	11	0	15	0	2	0	1	0	0	95
Aug-10	37	17	9	17	9	11	0	9	0	1	1	0	0	0	111
Jul-10	33	9	7	16	6	11	1	15	0	2	0	1	0	1	102
FY 2011-Avg.	28	13	9	16	9	11	0	11	0	1	1	1	0	0	100
FY 2010-Avg.	41	13	13	14	10	7	N/A	3	0	1	1	1	0	0	117
FY 2009-Avg.	49	21	N/A	13	N/A	N/A	N/A	3	0	2	2	1	0	0	112
FY 2008-Avg.	69	23	N/A	12	N/A	N/A	N/A	2	0	2	2	2	0	0	119
FY 2007-Avg.	63	23	N/A	11	N/A	N/A	N/A	2	0	1	2	1	0	0	109
FY 2006-Avg.	39	34	N/A	14	N/A	N/A	N/A	3	0	1	2	1	0	0	98

Definitions of Release Types

See previous page.

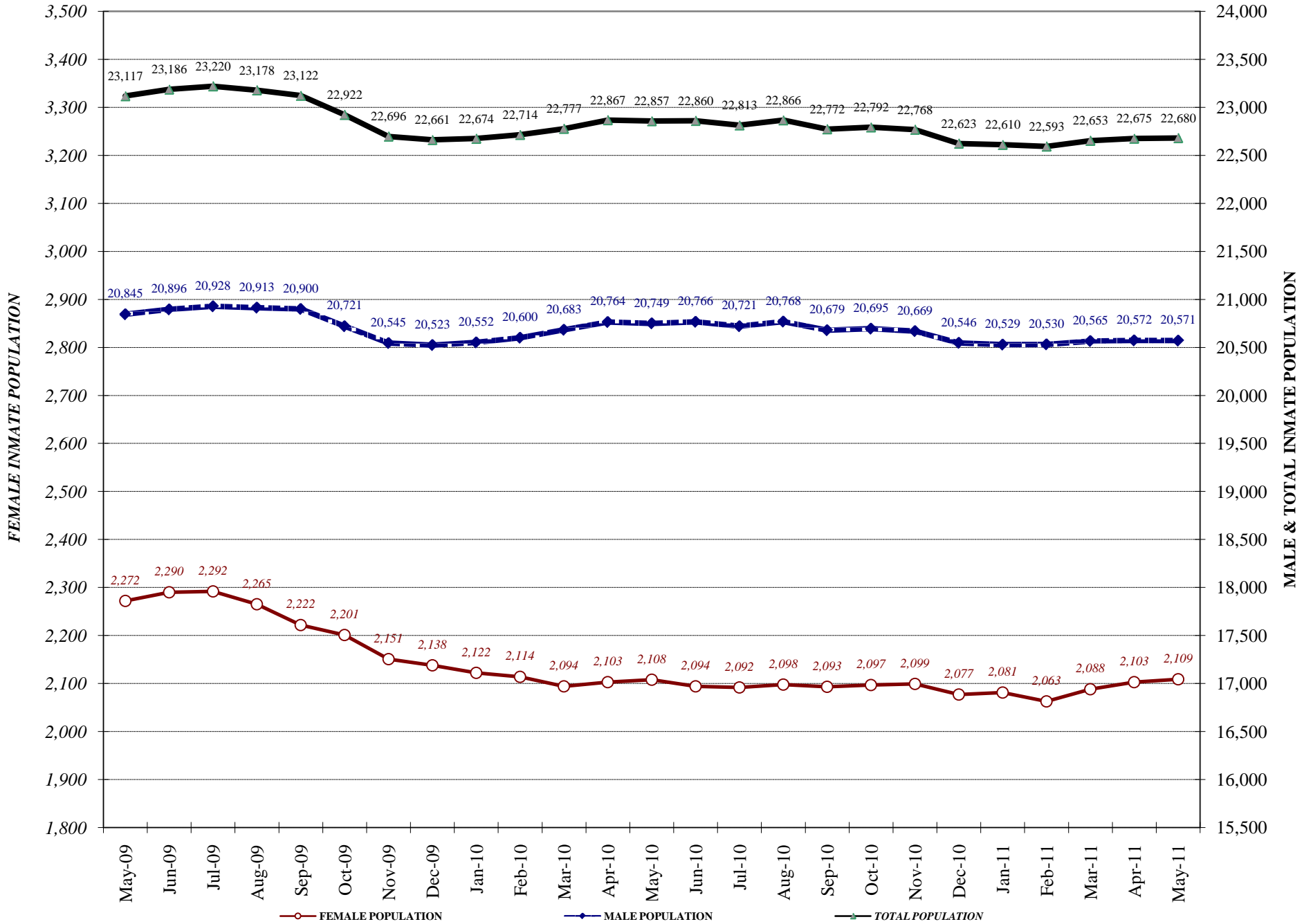
# COLORADO DEPARTMENT OF CORRECTIONS

## Adult Prison Releases



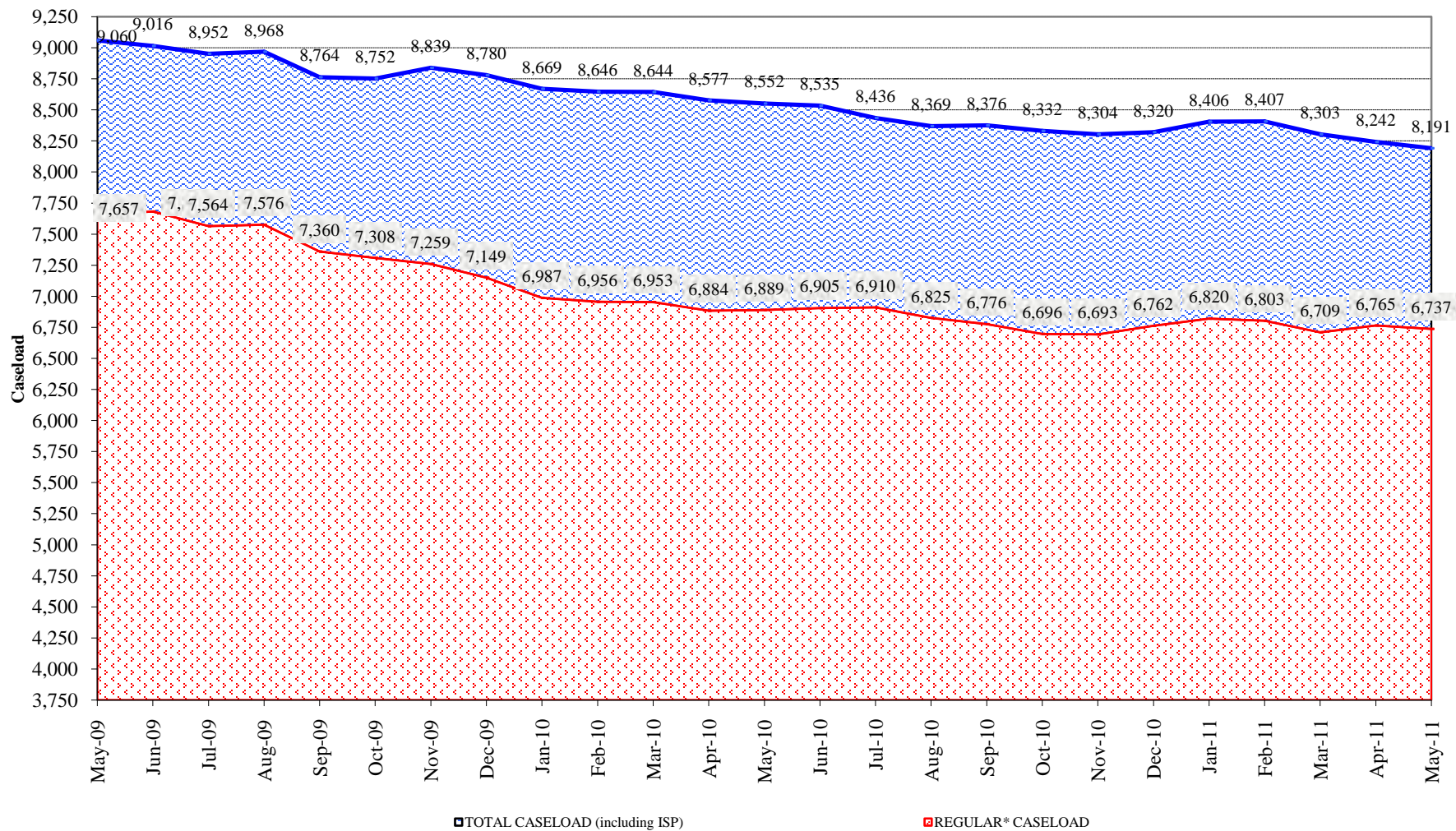
Total releases include releases to discretionary parole and accelerated transition, mandatory parole/reparole and HB1351, all types of discharges and other releases as detailed on the previous two pages.

## COLORADO DEPARTMENT OF CORRECTIONS Adult Jurisdictional Inmate Population





## COLORADO DEPARTMENT OF CORRECTIONS Parole Population



\* Regular caseload includes interstate parole, but excludes out-of-state parolees and absconders.