

COLORADO DEPARTMENT OF CORRECTIONS
MONTHLY POPULATION AND CAPACITY REPORT
as of April 30, 2011

	4/30/11	4/30/11			9-May-11	
	OPERATIONAL CAPACITY ⁽¹⁾	ON-GRDS POPULATION	OFF-GRDS POPULATION	TOTAL POPULATION	OPERATIONAL CAPACITY ⁽¹⁾	ON-GRDS POPULATION
COLO STATE PENITENTIARY	756	753	1	754	756	747
CENTENNIAL CORR FAC	652	621	2	623	336	312
STERLING CORR FAC	2,545	2,510	17	2,527	2,545	2,520
LIMON CORR FAC	951	945	4	949	953	941
ARK VALLEY CORR FAC	1,007	996	9	1,005	1,007	1,000
BUENA VISTA CORR FAC	920	907	16	923	926	858
BUENA VISTA MIN CTR	300	297	1	298	292	287
COLO TERR CORR FAC	936	917	7	924	944	938
FORT LYON CORR FAC	500	485	10	495	500	492
FREMONT CORR FAC	1,661	1,650	11	1,661	1,661	1,635
LA VISTA CORR FAC	519	511	13	524	519	419
ARROWHEAD CORR CTR	494	488	5	493	494	489
FOUR MILE CORR CTR	499	502	2	504	499	495
TRINIDAD CORR FAC	484	477	5	482	484	481
S.T.U. at LA VISTA	30	24	0	24	30	14
SKYLINE CORR CTR	249	246	0	246	249	248
COLORADO CORR CTR	150	150	1	151	150	148
DELTA CORR CTR	484	461	1	462	484	471
RIFLE CORR CTR	192	188	1	189	192	191
COLO CORR ALT PROGRAM	0	0	0	0	100	53
DENVER WOMEN'S CORR FAC	976	952	14	966	976	878
DENVER REC DIAG CTR	480	426	17	443	480	502
SAN CARLOS CORR FAC	255	245	6	251	255	245
SUBTOTAL	15,040	14,751	143	14,894	14,832	14,364
CONTRACTS:						
BENT COUNTY CORR CTR		1,269	11	1,280		1,438
CROWLEY COUNTY CORR FAC		1,543	24	1,567		1,662
KIT CARSON COUNTY CORR FAC		794	10	804		1,015
CHEYENNE MTN REENTRY CTR		684	5	689		687
HIGH PLAINS CORR FAC		0	0	0		214
OFF-GROUNDS POPULATION:						
ESCAPEES/WALKAWAYS			193			239
REVOCATIONS-JAIL				225		233
JAIL BACKLOG:						0
BACKLOG LESS THAN 72 HOURS			38		60	
BACKLOG GREATER THAN 72 HOURS (FISCAL YTD AVE =99)			30		66	
BACKLOG-PAROLEES AWAITING TRANSFER			32		78	
TOTAL JAIL BACKLOG			100			204
COUNTY JAIL CONTRACTS			27			18
COMMUNITY CENTERS						
PAROLE REVOCATIONS		1,645	119	1,764		1,653
REVOKED-RET TO CUST		2		2		0
REGRESSIONS		251	80	331		308
TOTAL COMM. CENTERS		1,898	361	2,259		2,024
ISP-INMATE						
REGRESSIONS		778	32	810		761
TOTAL ISP-INMATE		778	51	829		769
TOTAL COMM. CORRECTIONS		2,676	412	3,088		2,793
MALE POPULATION				20,572		20,764
FEMALE POPULATION				2,103		2,103
TOTAL INMATE JURISDICTIONAL POPULATION				22,675		22,867

⁽¹⁾OPERATIONAL CAPACITY INCLUDES ALL BEDS AVAILABLE FOR USE, INCLUDING MANAGEMENT CONTROL UNITS, BUT EXCLUDES EMERGENCY DOUBLE BUNKING.

COLORADO DEPARTMENT OF CORRECTIONS

ADULT INMATE JURISDICTIONAL POPULATION ⁽¹⁾

DATE: 5/9/2011

DATE	MALE POPULATION			FEMALE POPULATION			TOTAL POPULATION		
	Male Population	Net Change	Fiscal Y-T-D Average	Female Population	Net Change	Fiscal Y-T-D Average	Total Population	Net Change	Fiscal Y-T-D Average
04-30-11	20,572	7		2,103	15		22,675	22	
03-31-11	20,565	35		2,088	25		22,653	60	
02-28-11	20,530	1		2,063	-18		22,593	-17	
01-31-11	20,529	-17		2,081	4		22,610	-13	
12-31-10	20,546	-123	-19	2,077	-22	1	22,623	-145	-19
11-30-10	20,669	-26		2,099	2		22,768	-24	
10-31-10	20,695	16		2,097	4		22,792	20	
09-30-10	20,679	-89		2,093	-5		22,772	-94	
08-31-10	20,768	47		2,098	6		22,866	53	
07-31-10	20,721	-45		2,092	-2		22,813	-47	
06-30-10	20,766	17		2,094	-14		22,860	3	
05-31-10	20,749	-15		2,108	5		22,857	-10	
04-30-10	20,764	81		2,103	9		22,867	90	
03-31-10	20,683	83		2,094	-20		22,777	63	
02-28-10	20,600	48		2,114	-8		22,714	40	
01-31-10	20,552	29		2,122	-16		22,674	13	
12-31-09	20,523	-22	-11	2,138	-13	-16	22,661	-35	-27
11-30-09	20,545	-176		2,151	-50		22,696	-226	
10-31-09	20,721	-179		2,201	-21		22,922	-200	
09-30-09	20,900	-13		2,222	-43		23,122	-56	
08-31-09	20,913	-15		2,265	-27		23,178	-42	
07-31-09	20,928	32		2,292	2		23,220	34	
06-30-09	20,896	51		2,290	18		23,186	69	
05-31-09	20,845	-46		2,272	-16		23,117	-62	
04-30-09	20,891	41		2,288	-14		23,179	27	
03-31-09	20,850	36		2,302	17		23,152	53	
02-28-09	20,814	-16		2,285	-32		23,099	-48	
01-31-09	20,830	1		2,317	2		23,147	3	
12-31-08	20,829	-32	16	2,315	-8	-1	23,144	-40	15
11-30-08	20,861	41		2,323	-17		23,184	24	
10-31-08	20,820	85		2,340	9		23,160	94	
09-30-08	20,735	-33		2,331	27		23,066	-6	
08-31-08	20,768	87		2,304	-10		23,072	77	
07-31-08	20,681	-3		2,314	9		22,995	6	
06-30-08	20,684		42	2,305		-3	22,989		39
06-30-07	20,178		32	2,341		10	22,519		42
06-30-06	19,792		97	2,220		12	22,012		109
06-30-05	18,631		68	2,073		27	20,704		95
06-30-04	17,814		49	1,755		11	19,569		60
06-30-03	17,226		57	1,620		10	18,846		67
06-30-02	16,539		87	1,506		14	18,045		101
06-30-01	15,493		63	1,340		6	16,833		70
06-30-00	14,733		99	1,266		7	15,999		106
06-30-99	13,547		75	1,179		14	14,726		89
06-30-98	12,647			1,016			13,663		

⁽¹⁾ Adult inmate jurisdictional population includes on-grounds, off-grounds, out-of-state, escapees, and jail backlog and excludes offenders sentenced to the Youthful Offender System (YOS).

COLORADO DEPARTMENT OF CORRECTIONS
ADULT INMATE RELEASES FROM PRISON
TOTAL Population (Male and Female)

5/9/2011

	Parole ⁽¹⁾							Discharge			Other				Total
	Discretionary	Mandatory	Wknd. Mand.	Mand. Repar.	Wknd. Mand. Repar.	HB 1351 Early	Accl Trans	Sentence ⁽²⁾	Martin/Cooper	Chgs/Det.	Probation	Ct. Ord. Dsch.	Appeal Bond	Deceased	
Apr-11	151	148	88	113	53	82	0	104	2	10	6	5	0	4	766
Mar-11	174	151	103	136	65	99	0	107	1	13	6	5	1	3	864
Feb-11	150	142	116	75	74	70	0	100	1	9	6	5	0	5	753
Jan-11	204	122	126	123	64	79	0	102	1	16	10	5	0	3	855
Dec-10	159	164	104	153	81	84	0	109	5	13	8	4	0	9	893
Nov-10	155	135	115	158	81	93	0	90	4	17	7	3	1	6	865
Oct-10	142	137	104	138	82	80	0	98	1	17	11	5	0	5	820
Sep-10	174	142	92	148	106	83	0	114	4	22	11	2	0	4	902
Aug-10	191	142	113	131	62	92	0	102	5	19	9	8	0	3	877
Jul-10	210	114	104	121	77	90	1	100	1	19	9	14	0	4	864
FY 2011-Avg	171	140	107	130	75	85	N/A	103	3	16	8	6	0	5	846
FY 2010-Avg.	237	141	121	119	87	46	N/A	101	3	14	10	8	0	4	913
FY 2009-Avg.	343	188	N/A	93	N/A	N/A	N/A	97	5	17	12	10	0	4	898
FY 2008-Avg.	466	186	N/A	88	N/A	N/A	N/A	90	8	17	12	11	0	4	881
FY 2007-Avg.	422	198	N/A	89	N/A	N/A	N/A	81	10	16	13	9	0	4	843
FY 2006-Avg.	234	266	N/A	98	N/A	N/A	N/A	88	13	15	16	10	0	5	746

Definitions of Release Types

Discretionary parole-Released to parole through Parole Board discretion prior to mandatory release or sentence discharge date.

Mandatory parole-Released to parole on mandatory release date.

Wknd Mand.-Mandatory releases scheduled to release on a weekend; released a few days early under Parole Board authority.

Mand. Repar.-Reparoled on specific date set by Parole Board (includes S.B. 252 reparoles). n/a - breakout not available prior to June 2004.

Wknd Mand. Repar.-Mandatory Reparole releases scheduled to release on a weekend; released a few days early under Parole Board authority.

HB 1351 Early - Released to parole, subject to earn time provisions of H.B. 09-1351.

Accl Trans - Accelerated Transition released to parole prior to mandatory release by parole board based on program eligibility criteria.

Sentence discharge-Completion of sentence with no further supervision.

Martin/ Cooper discharge-Completion of sentence with no further supervision, sex offender subject to Martin/Cooper Supreme Court decision.

Chgs/ Det. discharge-Completion of sentence, released to other law enforcement for pending charges or detainees.

Probation-Released by court to probation.

Ct. Ord. Dsch.-Released by court order.

Appeal Bond-Released by court to appeal bond.

Deceased-Offender death in prison.

⁽¹⁾Due to the decrease in community transportation services, the Department implemented a procedural change in December 2005 with regards to releasing inmates on weekends. As a result, discretionary releases increased and mandatory releases decreased. However, beginning December 2008, the implementation of a new electronic coding system enabled these releases to be correctly classified as weekend mandatory parole and mandatory reparole releases.

⁽²⁾Sentence is now a combination of Sentence and HB 1087 due to legislation passed in 2009.

COLORADO DEPARTMENT OF CORRECTIONS
ADULT INMATE RELEASES FROM PRISON

5/9/2011

Male Population Only

	Parole ⁽¹⁾							Discharge			Other				Total
	Discre- tionary	Mand- atory	Wknd. Mand.	Mand. Repar.	Wknd. Mand. Repar.	HB 1351 Early	Accl Trans	Sentence ⁽²⁾	Martin/ Cooper	Chgs/ Det.	Probation	Ct. Ord. Dsch.	Appeal Bond	Deceased	
Apr-11	128	135	75	98	48	69	0	94	2	10	5	5	0	4	673
Mar-11	144	142	95	122	59	89	0	95	1	13	4	4	1	3	772
Feb-11	121	120	107	69	60	59	0	90	1	7	4	4	0	5	647
Jan-11	176	113	113	107	59	70	0	93	1	15	8	3	0	3	761
Dec-10	135	148	94	129	71	75	0	95	5	12	7	4	0	8	783
Nov-10	133	125	106	137	70	82	0	80	4	16	4	3	1	6	767
Oct-10	115	127	95	115	72	65	0	89	1	15	11	5	0	5	715
Sep-10	148	130	87	134	97	72	0	99	4	20	11	1	0	4	807
Aug-10	154	125	104	114	53	81	0	93	5	18	8	8	0	3	766
Jul-10	177	105	97	105	71	79	0	85	1	17	9	13	0	3	762
FY 2011-Avg.	143	127	97	113	66	74	0	91	3	14	7	5	0	4	745
FY 2010-Avg.	196	129	108	104	76	39	N/A	33	3	13	9	7	0	4	797
FY 2009-Avg.	294	167	N/A	80	N/A	N/A	N/A	31	5	15	10	9	0	4	786
FY 2008-Avg.	397	162	N/A	76	N/A	N/A	N/A	32	8	16	10	9	0	4	762
FY 2007-Avg.	359	175	N/A	77	N/A	N/A	N/A	29	9	15	11	8	0	4	733
FY 2006-Avg.	196	233	N/A	84	N/A	N/A	N/A	35	13	14	15	9	0	5	648

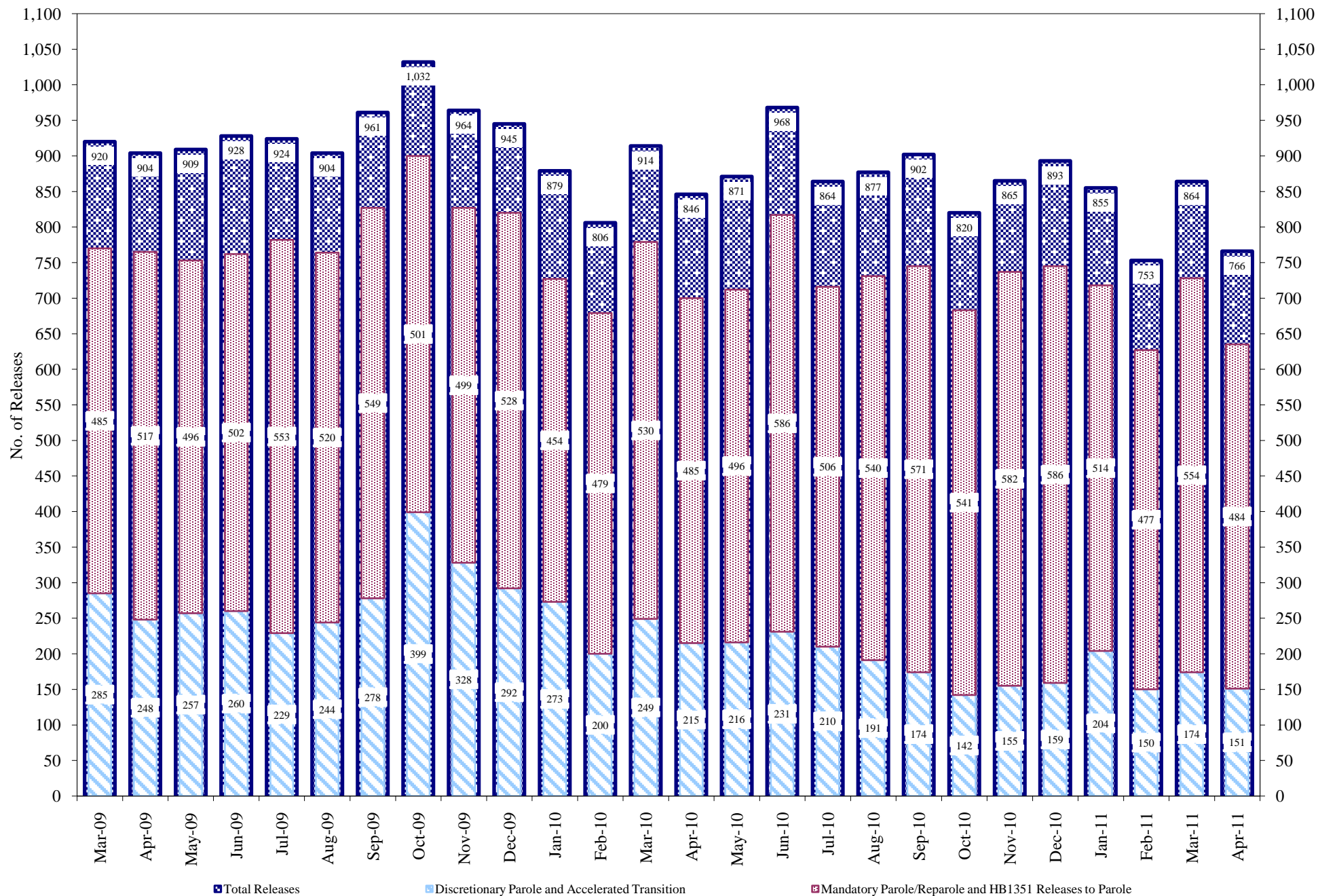
Female Population Only

	Parole ⁽¹⁾							Discharge			Other				Total
	Discre- tionary	Mand- atory	Wknd. Mand.	Mand. Repar.	Wknd. Mand. Repar.	HB 1351 Early	Accl Trans	Sentence ⁽²⁾	Martin/ Cooper	Chgs/ Det.	Probation	Ct. Ord. Dsch.	Appeal Bond	Deceased	
Apr-11	23	13	13	15	5	13	0	10	0	0	1	0	0	0	93
Mar-11	30	9	8	14	6	10	0	12	0	0	2	1	0	0	92
Feb-11	29	22	9	6	14	11	0	10	0	2	2	1	0	0	106
Jan-11	28	9	13	16	5	9	0	9	0	1	2	2	0	0	94
Dec-10	24	16	10	24	10	9	0	14	0	1	1	0	0	1	110
Nov-10	22	10	9	21	11	11	0	10	0	1	3	0	0	0	98
Oct-10	27	10	9	23	10	15	0	9	0	2	0	0	0	0	105
Sep-10	26	12	5	14	9	11	0	15	0	2	0	1	0	0	95
Aug-10	37	17	9	17	9	11	0	9	0	1	1	0	0	0	111
Jul-10	33	9	7	16	6	11	1	15	0	2	0	1	0	1	102
FY 2011-Avg.	28	13	9	17	9	11	0	11	0	1	1	1	0	0	101
FY 2010-Avg.	41	13	13	14	10	7	N/A	3	0	1	1	1	0	0	117
FY 2009-Avg.	49	21	N/A	13	N/A	N/A	N/A	3	0	2	2	1	0	0	112
FY 2008-Avg.	69	23	N/A	12	N/A	N/A	N/A	2	0	2	2	2	0	0	119
FY 2007-Avg.	63	23	N/A	11	N/A	N/A	N/A	2	0	1	2	1	0	0	109
FY 2006-Avg.	39	34	N/A	14	N/A	N/A	N/A	3	0	1	2	1	0	0	98

Definitions of Release Types

See previous page.

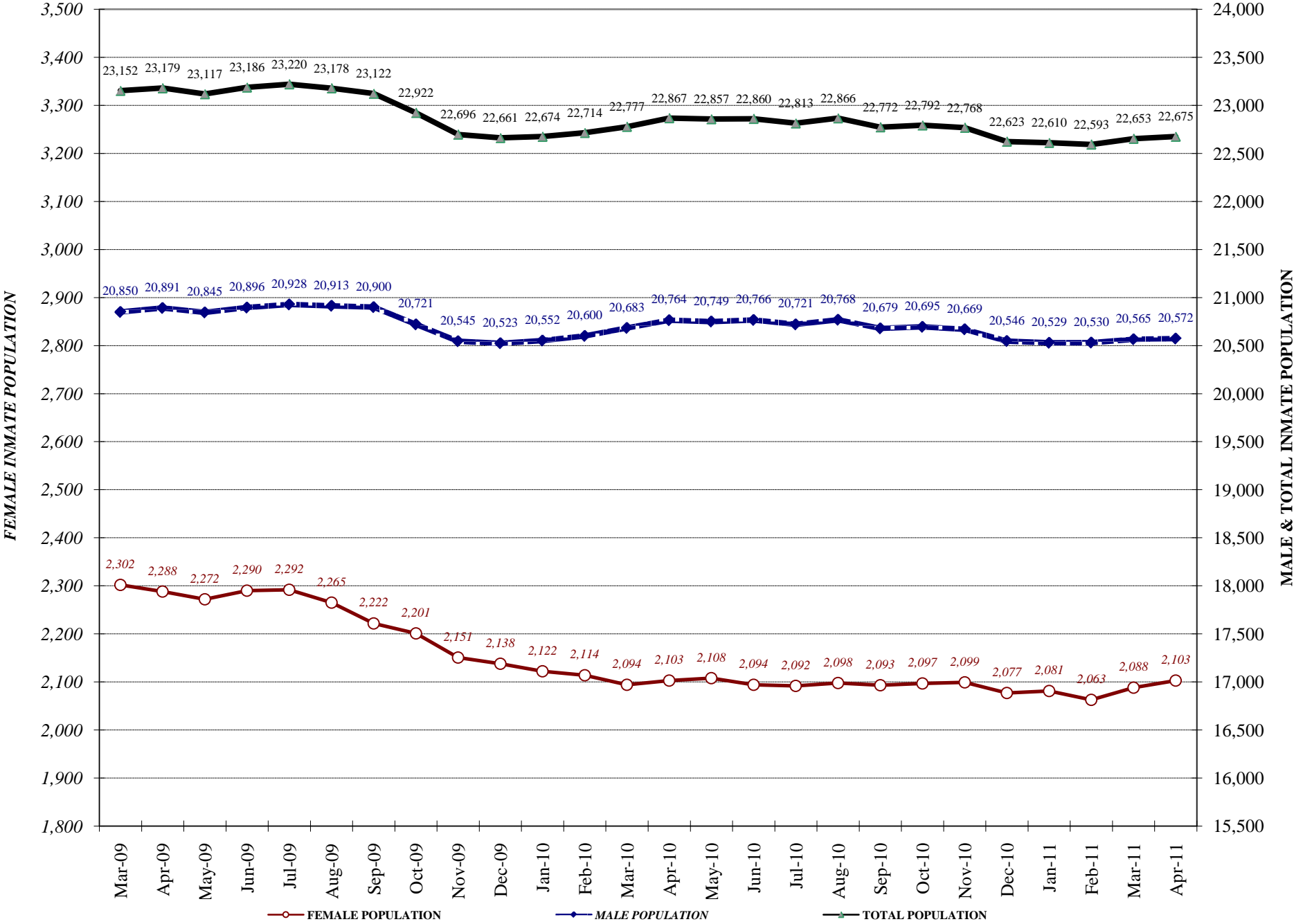
COLORADO DEPARTMENT OF CORRECTIONS Adult Prison Releases



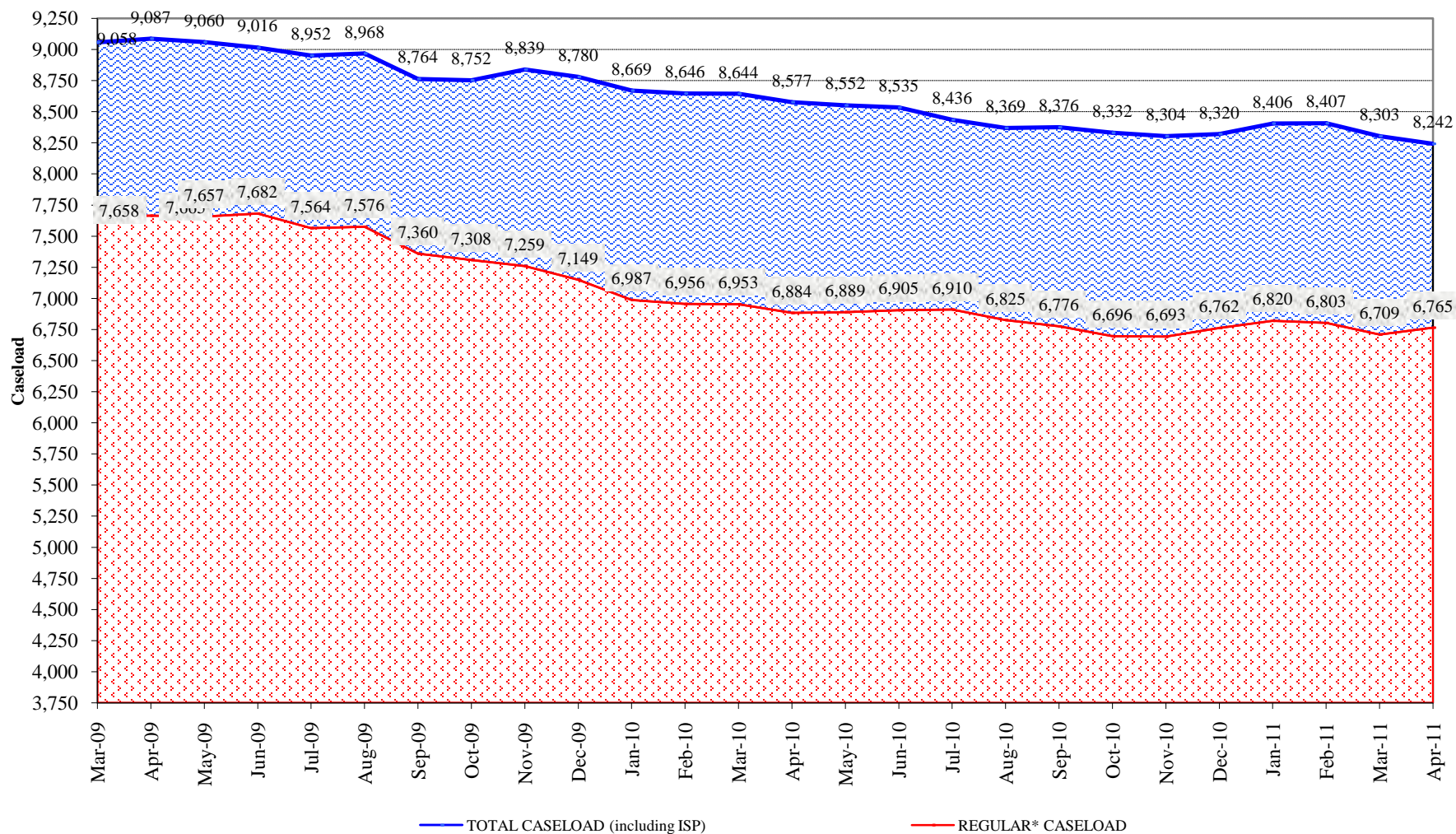
Total releases include releases to discretionary parole and accelerated transition, mandatory parole/reparole and HB1351, all types of discharges and other releases as detailed on the previous two pages.

COLORADO DEPARTMENT OF CORRECTIONS

Adult Jurisdictional Inmate Population



COLORADO DEPARTMENT OF CORRECTIONS Parole Population



* Regular caseload includes interstate parole, but excludes out-of-state parolees and absconders.