

**COLORADO DEPARTMENT OF CORRECTIONS
MONTHLY POPULATION AND CAPACITY REPORT
as of March 31, 2011**

	3/31/11	3/31/11			4-Apr-11	
	OPERATIONAL CAPACITY ⁽¹⁾	ON-GRDS POPULATION	OFF-GRDS POPULATION	TOTAL POPULATION	OPERATIONAL CAPACITY ⁽¹⁾	ON-GRDS POPULATION
COLO STATE PENITENTIARY	756	749	1	750	756	740
CENTENNIAL CORR FAC	652	620	1	621	336	308
STERLING CORR FAC	2,545	2,517	24	2,541	2,520	2,509
LIMON CORR FAC	951	937	9	946	953	937
ARK VALLEY CORR FAC	1,007	993	12	1,005	1,007	996
BUENA VISTA CORR FAC	920	901	17	918	926	859
BUENA VISTA MIN CTR	292	287	2	289	292	288
COLO TERR CORR FAC	936	921	10	931	944	945
FORT LYON CORR FAC	500	485	11	496	500	486
FREMONT CORR FAC	1,661	1,644	13	1,657	1,661	1,636
LA VISTA CORR FAC	519	509	12	521	519	410
ARROWHEAD CORR CTR	494	489	1	490	494	487
FOUR MILE CORR CTR	499	504	4	508	499	495
TRINIDAD CORR FAC	484	477	7	484	484	479
S.T.U. at LA VISTA	30	5	0	5	30	27
SKYLINE CORR CTR	249	246	1	247	249	249
COLORADO CORR CTR	150	145	1	146	150	150
DELTA CORR CTR	484	443	3	446	484	457
RIFLE CORR CTR	192	191	0	191	192	191
COLO CORR ALT PROGRAM	0	0	0	0	100	88
DENVER WOMEN'S CORR FAC	976	957	7	964	976	882
DENVER REC DIAG CTR	480	448	12	460	480	487
SAN CARLOS CORR FAC	255	243	6	249	255	244
SUBTOTAL	15,032	14,711	154	14,865	14,807	14,350
CONTRACTS:						
BENT COUNTY CORR CTR		1,283	17	1,300		1,432
CROWLEY COUNTY CORR FAC		1,612	27	1,639		1,654
KIT CARSON COUNTY CORR FAC		785	16	801		984
CHEYENNE MTN REENTRY CTR		676	6	682		704
HIGH PLAINS CORR FAC		0	0	0		212
OFF-GROUNDS POPULATION:						
ESCAPEES/WALKAWAYS			220			233
REVOCATIONS-JAIL				218		233
JAIL BACKLOG:						
BACKLOG LESS THAN 72 HOURS			38		58	
BACKLOG GREATER THAN 72 HOURS (FISCAL YTD AVE =102)			31		42	
BACKLOG-PAROLEES AWAITING TRANSFER			33		71	
TOTAL JAIL BACKLOG			102			171
COUNTY JAIL CONTRACTS			27			18
COMMUNITY CORRECTIONS						
COMMUNITY						
RESIDENTIAL		1,614		1,614		1,557
NON-RESIDENTIAL			159	159		117
PAROLE REVOCATIONS		2		2		0
REVOKED-RET TO CUST		229	110	339		283
REGRESSIONS			86	86		50
TOTAL COMMUNITY		1,845	355	2,200		2,007
ISP						
RESIDENTIAL		772		772		742
NON-RESIDENTIAL			35	35		33
REGRESSIONS			12	12		4
TOTAL ISP		772	47	819		779
TOTAL COMM. CORRECTIONS		2,617	402	3,019		2,786
MALE POPULATION				20,565		20,683
FEMALE POPULATION				2,088		2,094
TOTAL INMATE JURISDICTIONAL POPULATION				22,653		22,777

⁽¹⁾OPERATIONAL CAPACITY INCLUDES ALL BEDS AVAILABLE FOR USE, INCLUDING MANAGEMENT CONTROL UNITS, BUT EXCLUDES EMERGENCY DOUBLE BUNKING.

COLORADO DEPARTMENT OF CORRECTIONS
MONTHLY POPULATION AND CAPACITY REPORT
as of March 31, 2011

4-Apr-11

CURRENT MONTH CHANGES IN CAPACITY:

NET MONTHLY GROWTH RATE:

CURRENT MONTH	60
FISCAL YEAR-TO-DATE AVERAGE	-23

YOUTHFUL OFFENDER SYSTEM

	----- 3/31/11 -----			3/31/10
	PUEBLO	COMM. CORR.	TOTAL POPULATION	TOTAL POPULATION
INTAKE/IDO			0	10
RFP/REMEDICATION	26		26	13
PHASE I	182		182	173
PHASE II	19		19	13
PHASE III		42	42	29
OFF GROUNDS/BACKLOG			7	7
TOTAL Y.O.S. POPULATION	227	42	276	245

	CURRENT MONTH	FISCAL YR. TO DATE
YOS ADMISSIONS	4	54
YOS RELEASES:		
COMPLETION OF SENTENCE	4	25
JUDICIAL RELEASE TO PROB/CT ORD DISCHG	0	0
JUDICIAL TRANSFER TO DOC	0	0
TERMINATION/FAILURE	1	6
DECEASED	0	0
TOTAL RELEASES	5	31

PAROLE CASELOAD

	----- 3/31/11 -----			----- 2/28/11 -----		----- 3/31/10 -----	
	DOMESTIC	INTERST PAR/PROB	TOTAL CASELOAD	DOMESTIC	TOTAL CASELOAD	DOMESTIC	TOTAL CASELOAD
DENVER REGION							
REGULAR	2,471	83	2,554	2,500	2,585	2,548	2,624
ISP	686		686	685	685	724	724
SUBTOTAL	3,157	83	3,240	3,185	3,270	3,272	3,348
NORTHEAST REGION							
REGULAR	1,864	89	1,953	1,876	1,971	1,806	1,912
ISP	371		371	375	375	477	477
SUBTOTAL	2,235	89	2,324	2,251	2,346	2,283	2,389
SOUTHEAST REGION							
REGULAR	1,540	76	1,616	1,554	1,635	1,723	1,805
ISP	390		390	403	403	349	349
SUBTOTAL	1,930	76	2,006	1,957	2,038	2,072	2,154
WESTERN REGION							
REGULAR	540	46	586	564	612	568	612
ISP	147		147	141	141	141	141
SUBTOTAL	687	46	733	705	753	709	753
TOTAL CASELOAD							
REGULAR	6,415	294	6,709	6,494	6,803	6,645	6,953
ISP	1,594		1,594	1,604	1,604	1,691	1,691
TOTAL	8,009	294	8,303	8,098	8,407	8,336	8,644
ADDITIONAL CASELOAD:							
OUT-OF-STATE PAROLEES			1,973		1,964		2,086
PAROLEE ABSCONDERS			664		668		701

COLORADO DEPARTMENT OF CORRECTIONS

ADULT INMATE JURISDICTIONAL POPULATION ⁽¹⁾

DATE: 4/4/2011

DATE	MALE POPULATION			FEMALE POPULATION			TOTAL POPULATION		
	Male Population	Net Change	Fiscal Y-T-D Average	Female Population	Net Change	Fiscal Y-T-D Average	Total Population	Net Change	Fiscal Y-T-D Average
03-31-11	20,565	35		2,088	25		22,653	60	
02-28-11	20,530	1		2,063	-18		22,593	-17	
01-31-11	20,529	-17		2,081	4		22,610	-13	
12-31-10	20,546	-123		2,077	-22		22,623	-145	
11-30-10	20,669	-26	-22	2,099	2	-1	22,768	-24	-23
10-31-10	20,695	16		2,097	4		22,792	20	
09-30-10	20,679	-89		2,093	-5		22,772	-94	
08-31-10	20,768	47		2,098	6		22,866	53	
07-31-10	20,721	-45		2,092	-2		22,813	-47	
06-30-10	20,766	17		2,094	-14		22,860	3	
05-31-10	20,749	-15		2,108	5		22,857	-10	
04-30-10	20,764	81		2,103	9		22,867	90	
03-31-10	20,683	83		2,094	-20		22,777	63	
02-28-10	20,600	48		2,114	-8		22,714	40	
01-31-10	20,552	29		2,122	-16		22,674	13	
12-31-09	20,523	-22	-11	2,138	-13	-16	22,661	-35	-27
11-30-09	20,545	-176		2,151	-50		22,696	-226	
10-31-09	20,721	-179		2,201	-21		22,922	-200	
09-30-09	20,900	-13		2,222	-43		23,122	-56	
08-31-09	20,913	-15		2,265	-27		23,178	-42	
07-31-09	20,928	32		2,292	2		23,220	34	
06-30-09	20,896	51		2,290	18		23,186	69	
05-31-09	20,845	-46		2,272	-16		23,117	-62	
04-30-09	20,891	41		2,288	-14		23,179	27	
03-31-09	20,850	36		2,302	17		23,152	53	
02-28-09	20,814	-16		2,285	-32		23,099	-48	
01-31-09	20,830	1		2,317	2		23,147	3	
12-31-08	20,829	-32	16	2,315	-8	-1	23,144	-40	15
11-30-08	20,861	41		2,323	-17		23,184	24	
10-31-08	20,820	85		2,340	9		23,160	94	
09-30-08	20,735	-33		2,331	27		23,066	-6	
08-31-08	20,768	87		2,304	-10		23,072	77	
07-31-08	20,681	-3		2,314	9		22,995	6	
06-30-08	20,684		42	2,305		-3	22,989		39
06-30-07	20,178		32	2,341		10	22,519		42
06-30-06	19,792		97	2,220		12	22,012		109
06-30-05	18,631		68	2,073		27	20,704		95
06-30-04	17,814		49	1,755		11	19,569		60
06-30-03	17,226		57	1,620		10	18,846		67
06-30-02	16,539		87	1,506		14	18,045		101
06-30-01	15,493		63	1,340		6	16,833		70
06-30-00	14,733		99	1,266		7	15,999		106
06-30-99	13,547		75	1,179		14	14,726		89
06-30-98	12,647			1,016			13,663		

⁽¹⁾ Adult inmate jurisdictional population includes on-grounds, off-grounds, out-of-state, escapees, and jail backlog and excludes offenders sentenced to the Youthful Offender System (YOS).

COLORADO DEPARTMENT OF CORRECTIONS
ADULT INMATE RELEASES FROM PRISON
TOTAL Population (Male and Female)

4/4/2011

	Parole ⁽¹⁾							Discharge			Other				Total
	Discretionary	Mandatory	Wknd. Mand.	Mand. Repar.	Wknd. Mand. Repar.	HB 1351 Early	Accl Trans	Sentence ⁽²⁾	Martin/Cooper	Chgs/Det.	Probation	Ct. Ord. Dsch.	Appeal Bond	Deceased	
Mar-11	174	151	103	136	65	99	0	107	1	13	6	5	1	3	864
Feb-11	150	142	116	75	74	70	0	100	1	9	6	5	0	5	753
Jan-11	204	122	126	123	64	79	0	102	1	16	10	5	0	3	855
Dec-10	159	164	104	153	81	84	0	109	5	13	8	4	0	9	893
Nov-10	155	135	115	158	81	93	0	90	4	17	7	3	1	6	865
Oct-10	142	137	104	138	82	80	0	98	1	17	11	5	0	5	820
Sep-10	174	142	92	148	106	83	0	114	4	22	11	2	0	4	902
Aug-10	191	142	113	131	62	92	0	102	5	19	9	8	0	3	877
Jul-10	210	114	104	121	77	90	1	100	1	19	9	14	0	4	864
FY 2011-Avg	173	139	109	131	77	86	N/A	102	3	16	9	6	0	5	855
FY 2010-Avg.	237	141	121	119	87	46	N/A	101	3	14	10	8	0	4	913
FY 2009-Avg.	343	188	N/A	93	N/A	N/A	N/A	97	5	17	12	10	0	4	898
FY 2008-Avg.	466	186	N/A	88	N/A	N/A	N/A	90	8	17	12	11	0	4	881
FY 2007-Avg.	422	198	N/A	89	N/A	N/A	N/A	81	10	16	13	9	0	4	843
FY 2006-Avg.	234	266	N/A	98	N/A	N/A	N/A	88	13	15	16	10	0	5	746

Definitions of Release Types

Discretionary parole-Released to parole through Parole Board discretion prior to mandatory release or sentence discharge date.

Mandatory parole-Released to parole on mandatory release date.

Wknd Mand.-Mandatory releases scheduled to release on a weekend; released a few days early under Parole Board authority.

Mand. Repar-Reparoled on specific date set by Parole Board (includes S.B. 252 reparoles). n/a - breakout not available prior to June 2004.

Wknd Mand. Repar.-Mandatory Reparole releases scheduled to release on a weekend; released a few days early under Parole Board authority.

HB 1351 Early - Released to parole, subject to earn time provisions of H.B. 09-1351.

Accl Trans - Accelerated Transition released to parole prior to mandatory release by parole board based on program eligibility criteria.

Sentence discharge-Completion of sentence with no further supervision.

Martin/ Cooper discharge-Completion of sentence with no further supervision, sex offender subject to Martin/Cooper Supreme Court decision.

Chgs/ Det. discharge-Completion of sentence, released to other law enforcement for pending charges or detainees.

Probation-Released by court to probation.

Ct. Ord. Dsch.-Released by court order.

Appeal Bond-Released by court to appeal bond.

Deceased-Offender death in prison.

⁽¹⁾Due to the decrease in community transportation services, the Department implemented a procedural change in December 2005 with regards to releasing inmates on weekends. As a result, discretionary releases increased and mandatory releases decreased. However, beginning December 2008, the implementation of a new electronic coding system enabled these releases to be correctly classified as weekend mandatory parole and mandatory reparole releases.

⁽²⁾Sentence is now a combination of Sentence and HB 1087 due to legislation passed in 2009.

COLORADO DEPARTMENT OF CORRECTIONS
ADULT INMATE RELEASES FROM PRISON

4/4/2011

Male Population Only

	Parole ⁽¹⁾							Discharge			Other				Total
	Discre- tionary	Mand- atory	Wknd. Mand.	Mand. Repar.	Wknd. Mand. Repar.	HB 1351 Early	Accl Trans	Sentence ⁽²⁾	Martin/ Cooper	Chgs/ Det.	Probation	Ct. Ord. Dsch.	Appeal Bond	Deceased	
Mar-11	144	142	95	122	59	89	0	95	1	13	4	4	1	3	772
Feb-11	121	120	107	69	60	59	0	90	1	7	4	4	0	5	647
Jan-11	176	113	113	107	59	70	0	93	1	15	8	3	0	3	761
Dec-10	135	148	94	129	71	75	0	95	5	12	7	4	0	8	783
Nov-10	133	125	106	137	70	82	0	80	4	16	4	3	1	6	767
Oct-10	115	127	95	115	72	65	0	89	1	15	11	5	0	5	715
Sep-10	148	130	87	134	97	72	0	99	4	20	11	1	0	4	807
Aug-10	154	125	104	114	53	81	0	93	5	18	8	8	0	3	766
Jul-10	177	105	97	105	71	79	0	85	1	17	9	13	0	3	762
FY 2011-Avg.	145	126	100	115	68	75	0	91	3	15	7	5	0	4	753
FY 2010-Avg.	196	129	108	104	76	39	N/A	33	3	13	9	7	0	4	797
FY 2009-Avg.	294	167	N/A	80	N/A	N/A	N/A	31	5	15	10	9	0	4	786
FY 2008-Avg.	397	162	N/A	76	N/A	N/A	N/A	32	8	16	10	9	0	4	762
FY 2007-Avg.	359	175	N/A	77	N/A	N/A	N/A	29	9	15	11	8	0	4	733
FY 2006-Avg.	196	233	N/A	84	N/A	N/A	N/A	35	13	14	15	9	0	5	648

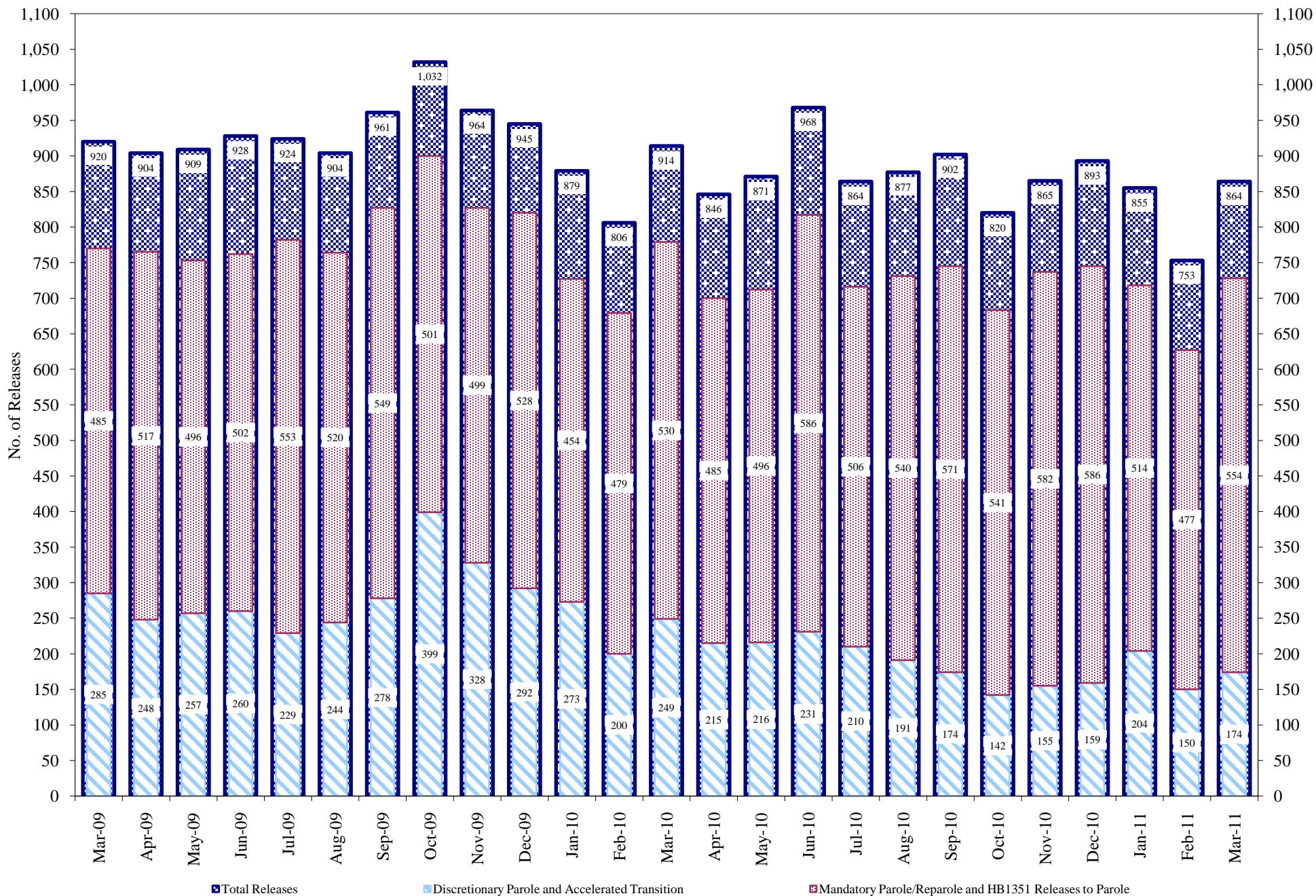
Female Population Only

	Parole ⁽¹⁾							Discharge			Other				Total
	Discre- tionary	Mand- atory	Wknd. Mand.	Mand. Repar.	Wknd. Mand. Repar.	HB 1351 Early	Accl Trans	Sentence ⁽²⁾	Martin/ Cooper	Chgs/ Det.	Probation	Ct. Ord. Dsch.	Appeal Bond	Deceased	
Mar-11	30	9	8	14	6	10	0	12	0	0	2	1	0	0	92
Feb-11	29	22	9	6	14	11	0	10	0	2	2	1	0	0	106
Jan-11	28	9	13	16	5	9	0	9	0	1	2	2	0	0	94
Dec-10	24	16	10	24	10	9	0	14	0	1	1	0	0	1	110
Nov-10	22	10	9	21	11	11	0	10	0	1	3	0	0	0	98
Oct-10	27	10	9	23	10	15	0	9	0	2	0	0	0	0	105
Sep-10	26	12	5	14	9	11	0	15	0	2	0	1	0	0	95
Aug-10	37	17	9	17	9	11	0	9	0	1	1	0	0	0	111
Jul-10	33	9	7	16	6	11	1	15	0	2	0	1	0	1	102
FY 2011-Avg.	28	13	9	17	9	11	0	11	0	1	1	1	0	0	101
FY 2010-Avg.	41	13	13	14	10	7	N/A	3	0	1	1	1	0	0	117
FY 2009-Avg.	49	21	N/A	13	N/A	N/A	N/A	3	0	2	2	1	0	0	112
FY 2008-Avg.	69	23	N/A	12	N/A	N/A	N/A	2	0	2	2	2	0	0	119
FY 2007-Avg.	63	23	N/A	11	N/A	N/A	N/A	2	0	1	2	1	0	0	109
FY 2006-Avg.	39	34	N/A	14	N/A	N/A	N/A	3	0	1	2	1	0	0	98

Definitions of Release Types

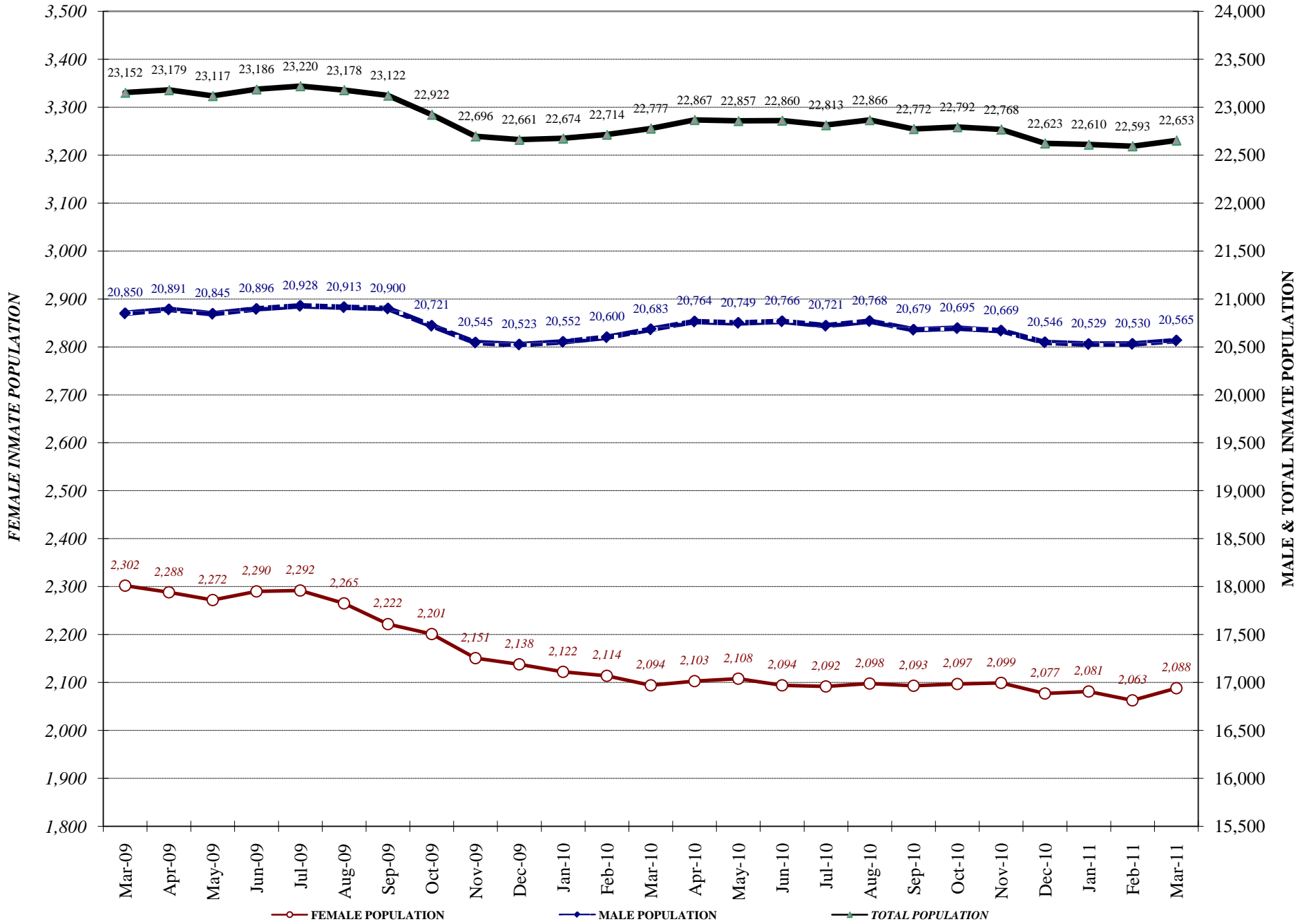
See previous page.

COLORADO DEPARTMENT OF CORRECTIONS Adult Prison Releases

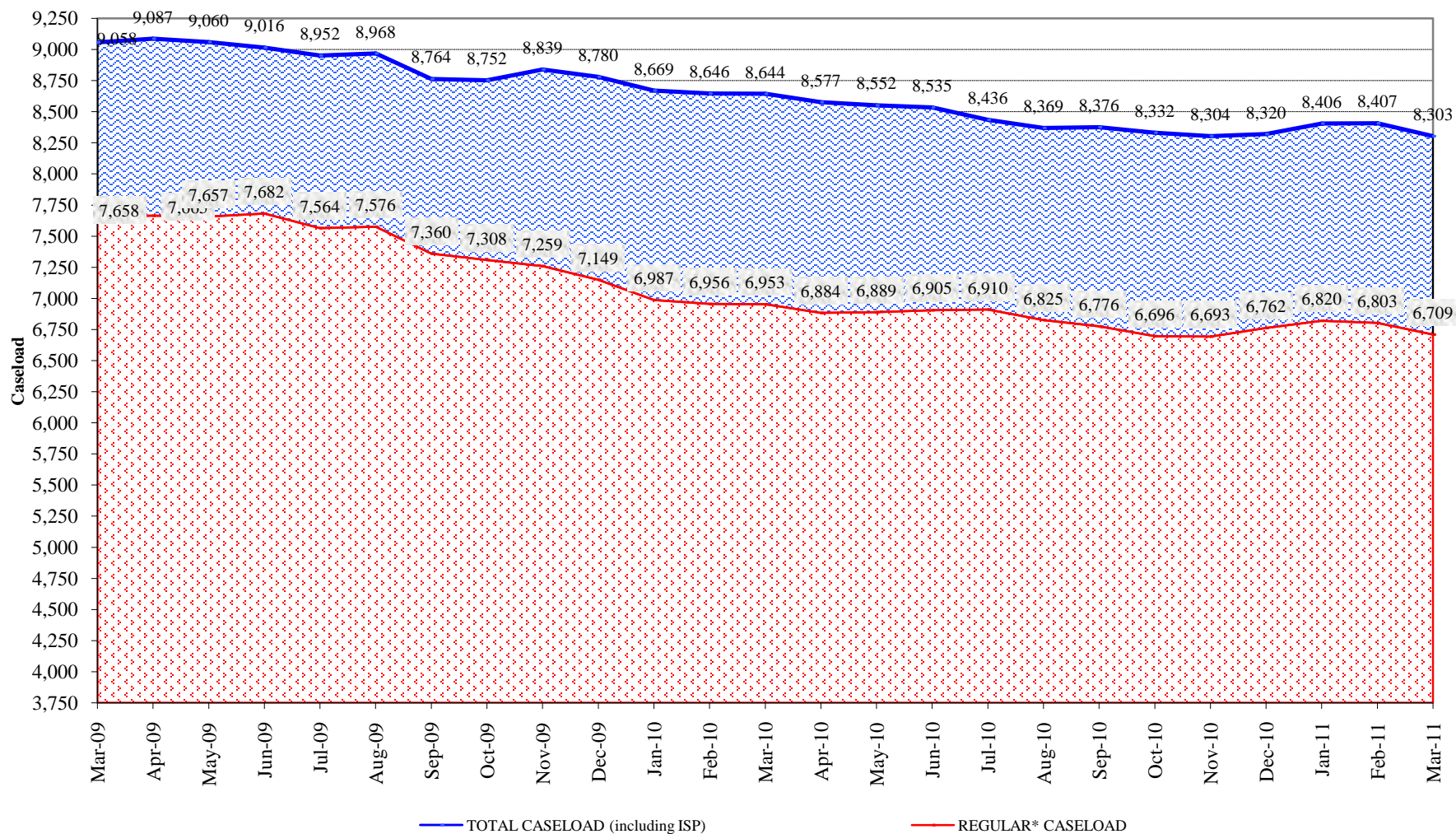


Total releases include releases to discretionary parole and accelerated transition, mandatory parole/reparole and HB1351, all types of discharges and other releases as detailed on the previous two pages.

COLORADO DEPARTMENT OF CORRECTIONS Adult Jurisdictional Inmate Population



COLORADO DEPARTMENT OF CORRECTIONS Parole Population



* Regular caseload includes interstate parole, but excludes out-of-state parolees and absconders.