

**COLORADO DEPARTMENT OF CORRECTIONS  
MONTHLY POPULATION AND CAPACITY REPORT  
as of October 31, 2010**

4-Nov-10

	10/31/2010	----- 10/31/10 -----			----- 10/31/09 -----	
	OPERATIONAL	ON-GRDS	OFF-GRDS	TOTAL	OPERATIONAL	ON-GRDS
	CAPACITY <sup>(1)</sup>	POPULATION	POPULATION	POPULATION	CAPACITY <sup>(1)</sup>	POPULATION
COLO STATE PENITENTIARY	756	741	6	747	756	750
CENTENNIAL CORR FAC	652	560	2	562	336	301
STERLING CORR FAC	2,545	2,426	25	2,451	2,545	2,476
LIMON CORR FAC	951	941	8	949	953	938
ARK VALLEY CORR FAC	1,007	995	15	1,010	1,007	994
BUENA VISTA CORR FAC	920	893	17	910	926	767
BUENA VISTA MIN CTR	292	285	3	288	292	285
COLO TERR CORR FAC	936	916	7	923	944	891
FORT LYON CORR FAC	500	481	12	493	500	488
FREMONT CORR FAC	1,661	1,639	12	1,651	1,661	1,603
LA VISTA CORR FAC	519	508	8	516	519	443
ARROWHEAD CORR CTR	494	489	0	489	494	488
FOUR MILE CORR CTR	499	485	19	504	499	492
TRINIDAD CORR FAC	484	479	5	484	484	478
S.T.U. at LA VISTA	30	9	1	10	30	20
SKYLINE CORR CTR	249	248	1	249	249	247
COLORADO CORR CTR	150	150	1	151	150	150
DELTA CORR CTR	484	473	3	476	484	477
RIFLE CORR CTR	192	179	2	181	192	191
COLO CORR ALT PROGRAM	0	0	0	0	100	73
DENVER WOMEN'S CORR FAC	976	938	16	954	976	857
DENVER REC DIAG CTR	480	489	12	501	480	386
SAN CARLOS CORR FAC	255	247	4	251	255	250
<b>***SUBTOTAL***</b>	<b>15,032</b>	<b>14,571</b>	<b>179</b>	<b>14,750</b>	<b>14,832</b>	<b>14,045</b>
<b>CONTRACTS:</b>						
BENT COUNTY CORR CTR		1,373	26	1,399		1,362
CROWLEY COUNTY CORR FAC		1,641	24	1,665		1,639
KIT CARSON COUNTY CORR FAC		825	14	839		1,315
CHEYENNE MTN REENTRY CTR		676	5	681		757
HIGH PLAINS CORR FAC		0	0	0		250
<b>OFF-GROUNDS POPULATION:</b>						
ESCAPEES/WALKAWAYS			248			268
REVOCATIONS-JAIL				228		225
<b>JAIL BACKLOG:</b>						
BACKLOG LESS THAN 72 HOURS			22		38	
BACKLOG GREATER THAN 72 HOURS (FISCAL YTD AVE =137)			94		46	
BACKLOG-PAROLEES AWAITING TRANSFER			37		68	
<b>TOTAL JAIL BACKLOG</b>			<b>153</b>			<b>152</b>
<b>COUNTY JAIL CONTRACTS</b>			<b>24</b>			<b>17</b>
<b>COMMUNITY CORRECTIONS</b>						
<b>COMMUNITY</b>						
RESIDENTIAL		1,712		1,712	1,580	1,580
NON-RESIDENTIAL			105	105	109	109
PAROLE REVOCATIONS				0	0	0
REVOKED-RET TO CUST		256	103	359	308	308
REGRESSIONS			101	101	87	87
<b>TOTAL COMMUNITY</b>		<b>1,968</b>	<b>309</b>	<b>2,277</b>	<b>2,084</b>	<b>2,084</b>
<b>ISP</b>						
RESIDENTIAL		736		736	770	770
NON-RESIDENTIAL			32	32	32	32
REGRESSIONS			8	8	6	6
<b>TOTAL ISP</b>		<b>736</b>	<b>40</b>	<b>776</b>	<b>808</b>	<b>808</b>
<b>TOTAL COMM. CORRECTIONS</b>		<b>2,704</b>	<b>349</b>	<b>3,053</b>	<b>2,892</b>	<b>2,892</b>
MALE POPULATION				<b>20,695</b>		20,721
FEMALE POPULATION				<b>2,097</b>		2,201
<b>**TOTAL INMATE JURISDICTIONAL POPULATION**</b>				<b>22,792</b>		<b>22,922</b>

<sup>(1)</sup>OPERATIONAL CAPACITY INCLUDES ALL BEDS AVAILABLE FOR USE, INCLUDING MANAGEMENT CONTROL UNITS, BUT EXCLUDES EMERGENCY DOUBLE BUNKING.

**COLORADO DEPARTMENT OF CORRECTIONS**  
**MONTHLY POPULATION AND CAPACITY REPORT**  
as of October 31, 2010

4-Nov-10

CURRENT MONTH CHANGES IN CAPACITY:

**NET MONTHLY GROWTH RATE:**

CURRENT MONTH	20
FISCAL YEAR-TO-DATE AVERAGE	-17

**YOUTHFUL OFFENDER SYSTEM**

	----- 10/31/10 -----			10/31/09
	PUEBLO	COMM. CORR.	TOTAL POPULATION	TOTAL POPULATION
INTAKE/IDO	6		6	5
RFP/REMEDICATION	12		12	16
PHASE I	191		191	155
PHASE II	16		16	14
PHASE III	1	42	43	31
OFF GROUNDS/BACKLOG			3	3
<b>**TOTAL Y.O.S. POPULATION**</b>	<b>226</b>	<b>42</b>	<b>271</b>	<b>224</b>

	CURRENT MONTH	FISCAL YR. TO DATE
YOS ADMISSIONS	6	23
YOS RELEASES:		
COMPLETION OF SENTENCE	1	6
JUDICIAL RELEASE TO PROB/CT ORD DISCHG	0	0
JUDICIAL TRANSFER TO DOC	0	0
TERMINATION/FAILURE	0	1
DECEASED	0	0
TOTAL RELEASES	1	7

**PAROLE CASELOAD**

	----- 10/31/2010 -----			----- 09/30/2010 -----		----- 10/31/09 -----	
	DOMESTIC	INTERST PAR/PROB	TOTAL CASELOAD	DOMESTIC	TOTAL CASELOAD	DOMESTIC	TOTAL CASELOAD
DENVER REGION							
REGULAR	2,442	88	2,530	2,478	2,565	2,657	2,732
ISP	741		741	733	733	653	653
SUBTOTAL	3,183	88	3,271	3,211	3,298	3,310	3,385
NORTHEAST REGION							
REGULAR	1,792	102	1,894	1,813	1,917	1,868	1,970
ISP	406		406	386	386	390	390
SUBTOTAL	2,198	102	2,300	2,199	2,303	2,258	2,360
SOUTHEAST REGION							
REGULAR	1,599	78	1,677	1,624	1,703	1,815	1,906
ISP	340		340	332	332	261	261
SUBTOTAL	1,939	78	2,017	1,956	2,035	2,076	2,167
WESTERN REGION							
REGULAR	547	48	595	540	591	652	700
ISP	149		149	149	149	140	140
SUBTOTAL	696	48	744	689	740	792	840
TOTAL CASELOAD							
REGULAR	6,380	316	6,696	6,455	6,776	6,992	7,308
ISP	1,636		1,636	1,600	1,600	1,444	1,444
TOTAL	8,016	316	8,332	8,055	8,376	8,436	8,752
ADDITIONAL CASELOAD:							
OUT-OF-STATE PAROLEES			2,019		2,052		2,067
PAROLEE ABSCONDERS			711		740		705



**COLORADO DEPARTMENT OF CORRECTIONS**  
**ADULT INMATE JURISDICTIONAL POPULATION (1)**

DATE: 11/4/2010

DATE	MALE POPULATION			FEMALE POPULATION			TOTAL POPULATION		
	Male Population	Net Change	Fiscal Y-T-D Average	Female Population	Net Change	Fiscal Y-T-D Average	Total Population	Net Change	Fiscal Y-T-D Average
<b>10-31-10</b>	<b>20,695</b>	<b>16</b>		<b>2,097</b>	<b>4</b>		<b>22,792</b>	<b>20</b>	
09-30-10	20,679	-89	<b>-18</b>	2,093	-5	<b>1</b>	22,772	-94	<b>-17</b>
08-31-10	20,768	47		2,098	6		22,866	53	
07-31-10	20,721	-45		2,092	-2		22,813	-47	
<b>06-30-10</b>	<b>20,766</b>	<b>17</b>		<b>2,094</b>	<b>-14</b>		<b>22,860</b>	<b>3</b>	
05-31-10	20,749	-15		2,108	5		22,857	-10	
04-30-10	20,764	81		2,103	9		22,867	90	
03-31-10	20,683	83		2,094	-20		22,777	63	
02-28-10	20,600	48		2,114	-8		22,714	40	
01-31-10	20,552	29		2,122	-16		22,674	13	
12-31-09	20,523	-22	<b>-11</b>	2,138	-13	<b>-16</b>	22,661	-35	<b>-27</b>
11-30-09	20,545	-176		2,151	-50		22,696	-226	
10-31-09	20,721	-179		2,201	-21		22,922	-200	
09-30-09	20,900	-13		2,222	-43		23,122	-56	
08-31-09	20,913	-15		2,265	-27		23,178	-42	
07-31-09	20,928	32		2,292	2		23,220	34	
<b>06-30-09</b>	<b>20,896</b>	<b>51</b>		<b>2,290</b>	<b>18</b>		<b>23,186</b>	<b>69</b>	
05-31-09	20,845	-46		2,272	-16		23,117	-62	
04-30-09	20,891	41		2,288	-14		23,179	27	
03-31-09	20,850	36		2,302	17		23,152	53	
02-28-09	20,814	-16		2,285	-32		23,099	-48	
01-31-09	20,830	1		2,317	2		23,147	3	
12-31-08	20,829	-32	<b>16</b>	2,315	-8	<b>-1</b>	23,144	-40	<b>15</b>
11-30-08	20,861	41		2,323	-17		23,184	24	
10-31-08	20,820	85		2,340	9		23,160	94	
09-30-08	20,735	-33		2,331	27		23,066	-6	
08-31-08	20,768	87		2,304	-10		23,072	77	
07-31-08	20,681	-3		2,314	9		22,995	6	
<b>06-30-08</b>	<b>20,684</b>		<b>42</b>	<b>2,305</b>		<b>-3</b>	<b>22,989</b>		<b>39</b>
<b>06-30-07</b>	<b>20,178</b>		<b>32</b>	<b>2,341</b>		<b>10</b>	<b>22,519</b>		<b>42</b>
<b>06-30-06</b>	<b>19,792</b>		<b>97</b>	<b>2,220</b>		<b>12</b>	<b>22,012</b>		<b>109</b>
<b>06-30-05</b>	<b>18,631</b>		<b>68</b>	<b>2,073</b>		<b>27</b>	<b>20,704</b>		<b>95</b>
<b>06-30-04</b>	<b>17,814</b>		<b>49</b>	<b>1,755</b>		<b>11</b>	<b>19,569</b>		<b>60</b>
<b>06-30-03</b>	<b>17,226</b>		<b>57</b>	<b>1,620</b>		<b>10</b>	<b>18,846</b>		<b>67</b>
<b>06-30-02</b>	<b>16,539</b>		<b>87</b>	<b>1,506</b>		<b>14</b>	<b>18,045</b>		<b>101</b>
<b>06-30-01</b>	<b>15,493</b>		<b>63</b>	<b>1,340</b>		<b>6</b>	<b>16,833</b>		<b>70</b>
<b>06-30-00</b>	<b>14,733</b>		<b>99</b>	<b>1,266</b>		<b>7</b>	<b>15,999</b>		<b>106</b>
<b>06-30-99</b>	<b>13,547</b>		<b>75</b>	<b>1,179</b>		<b>14</b>	<b>14,726</b>		<b>89</b>
<b>06-30-98</b>	<b>12,647</b>			<b>1,016</b>			<b>13,663</b>		

(1) Adult inmate jurisdictional population includes on-grounds, off-grounds, out-of-state, escapees, and jail backlog and excludes offenders sentenced to the Youthful Offender System (YOS).

**COLORADO DEPARTMENT OF CORRECTIONS**  
**ADULT INMATE RELEASES FROM PRISON**  
**TOTAL Population (Male and Female)**

11/4/2010

	Parole <sup>(1)</sup>							Discharge			Other				Total
	Discretionary	Mandatory	Wknd. Mand.	Mand. Repar.	Wknd. Mand. Repar.	HB 1351 Early	Accl Trans	Sentence <sup>(2)</sup>	Martin/Cooper	Chgs/Det.	Probation	Ct. Ord. Dsch.	Appeal Bond	Deceased	
Oct-10	142	137	104	138	82	80	0	98	1	17	11	5	0	5	820
Sep-10	174	142	92	148	106	83	0	114	4	22	11	2	0	4	902
Aug-10	191	142	113	131	62	92	0	102	5	19	9	8	0	3	877
Jul-10	210	114	104	121	77	90	1	100	1	19	9	14	0	4	864
FY 2011-Avg	179	134	103	135	82	86	N/A	104	3	19	10	7	0	4	866
FY 2010-Avg.	237	141	121	119	87	46	N/A	36	3	14	10	8	0	4	913
FY 2009-Avg.	343	188	N/A	93	N/A	N/A	N/A	34	5	17	12	10	0	4	898
FY 2008-Avg.	466	186	N/A	88	N/A	N/A	N/A	34	8	17	12	11	0	4	881
FY 2007-Avg.	422	198	N/A	89	N/A	N/A	N/A	31	10	16	13	9	0	4	843
FY 2006-Avg.	234	266	N/A	98	N/A	N/A	N/A	38	13	15	16	10	0	5	746

Definitions of Release Types

**Discretionary parole**-Released to parole through Parole Board discretion prior to mandatory release or sentence discharge date.

**Mandatory parole**-Released to parole on mandatory release date.

**Wknd Mand.**-Mandatory releases scheduled to release on a weekend; released a few days early under Parole Board authority.

**Mand. Repar.**-Reparoled on specific date set by Parole Board (includes S.B. 252 reparaes). n/a - breakout not available prior to June 2004.

**Wknd Mand. Repar.**-Mandatory Reparole releases scheduled to release on a weekend; released a few days early under Parole Board authority.

**HB 1351 Early** - Released to parole, subject to earn time provisions of H.B. 09-1351.

**Accl Trans** - Accelerated Transition released to parole prior to mandatory release by parole board based on program eligibility criteria.

**Sentence discharge**-Completion of sentence with no further supervision.

**Martin/ Cooper discharge**-Completion of sentence with no further supervision, sex offender subject to Martin/Cooper Supreme Court decision.

**Chgs/ Det. discharge**-Completion of sentence, released to other law enforcement for pending charges or detainers.

**Probation**-Released by court to probation.

**Ct. Ord. Dsch.**-Released by court order.

**Appeal Bond**-Released by court to appeal bond.

**Deceased**-Offender death in prison.

<sup>(1)</sup>Due to the decrease in community transportation services, the Department implemented a procedural change in December 2005 with regards to releasing inmates on weekends. As a result, discretionary releases increased and mandatory releases decreased. However, beginning December 2008, the implementation of a new electronic coding system enabled these releases to be correctly classified as weekend mandatory parole and mandatory reparole releases.

<sup>(2)</sup>Sentence is now a combination of Sentence and HB 1087 due to legislation passed in 2009.

**COLORADO DEPARTMENT OF CORRECTIONS**  
ADULT INMATE RELEASES FROM PRISON

11/4/2010

**Male Population Only**

	Parole <sup>(1)</sup>							Discharge			Other				Total
	Discre- tionary	Mand- atory	Wknd. Mand.	Mand. Repar.	Wknd. Mand. Repar.	HB 1351 Early	Accl Trans	Sentence <sup>(2)</sup>	Martin/ Cooper	Chgs/ Det.	Probation	Ct. Ord. Dsch.	Appeal Bond	Deceased	
Oct-10	115	127	95	115	72	65	0	89	1	15	11	5	0	5	715
Sep-10	148	130	87	134	97	72	0	99	4	20	11	1	0	4	807
Aug-10	154	125	104	114	53	81	0	93	5	18	8	8	0	3	766
Jul-10	177	105	97	105	71	79	0	85	1	17	9	13	0	3	762
FY 2011-Avg.	149	122	96	117	73	74	0	92	3	18	10	7	0	4	763
FY 2010-Avg.	196	129	108	104	76	39	N/A	33	3	13	9	7	0	4	797
FY 2009-Avg.	294	167	N/A	80	N/A	N/A	N/A	31	5	15	10	9	0	4	786
FY 2008-Avg.	397	162	N/A	76	N/A	N/A	N/A	32	8	16	10	9	0	4	762
FY 2007-Avg.	359	175	N/A	77	N/A	N/A	N/A	29	9	15	11	8	0	4	733
FY 2006-Avg.	196	233	N/A	84	N/A	N/A	N/A	35	13	14	15	9	0	5	648

**Female Population Only**

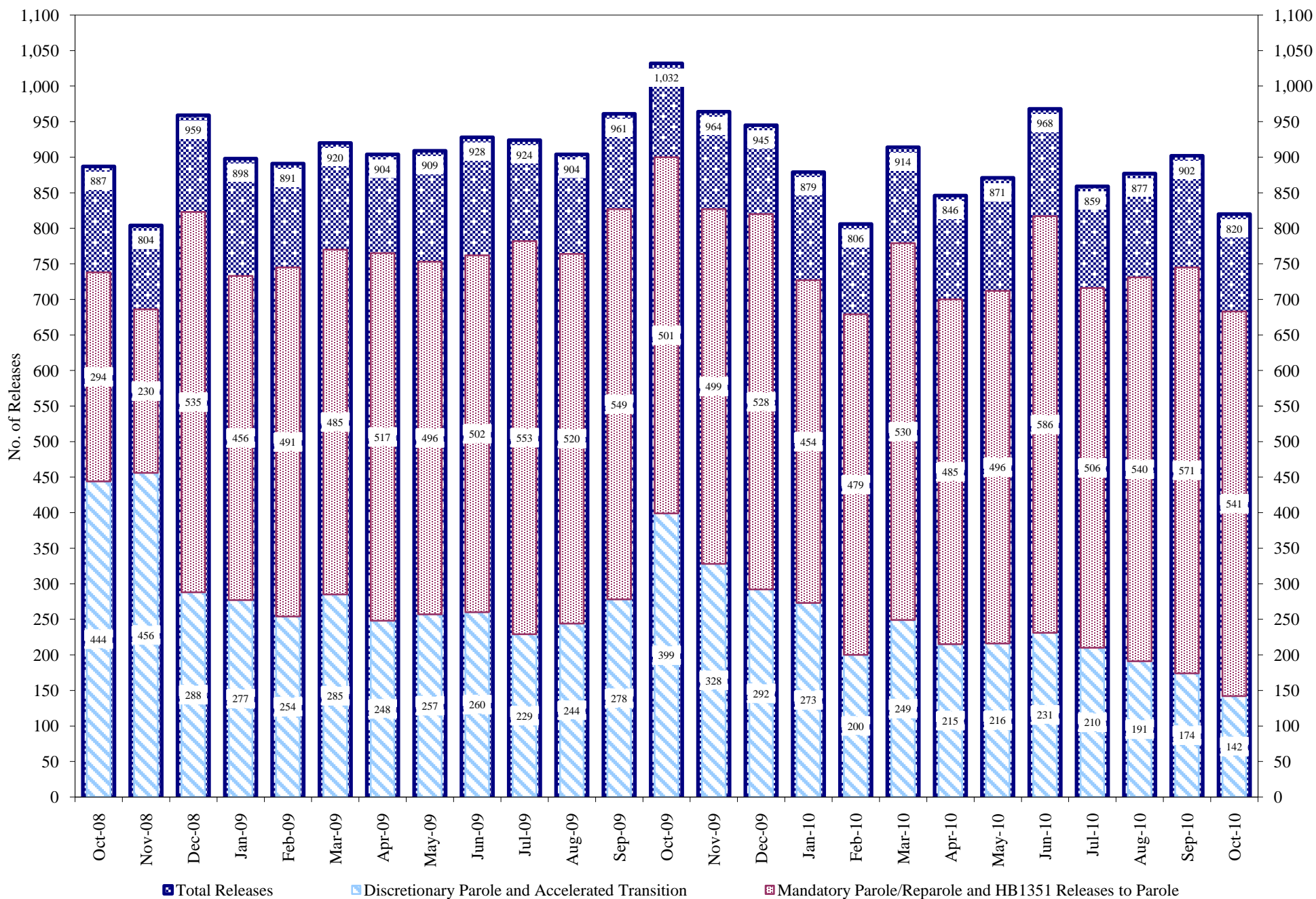
	Parole <sup>(1)</sup>							Discharge			Other				Total
	Discre- tionary	Mand- atory	Wknd. Mand.	Mand. Repar.	Wknd. Mand. Repar.	HB 1351 Early	Accl Trans	Sentence <sup>(2)</sup>	Martin/ Cooper	Chgs/ Det.	Probation	Ct. Ord. Dsch.	Appeal Bond	Deceased	
Oct-10	27	10	9	23	10	15	0	9	0	2	0	0	0	0	105
Sep-10	26	12	5	14	9	11	0	15	0	2	0	1	0	0	95
Aug-10	37	17	9	17	9	11	0	9	0	1	1	0	0	0	111
Jul-10	33	9	7	16	6	11	1	15	0	2	0	1	0	1	102
FY 2011-Avg.	31	12	8	18	9	12	0	12	0	2	0	1	0	0	103
FY 2010-Avg.	41	13	13	14	10	7	N/A	3	0	1	1	1	0	0	117
FY 2009-Avg.	49	21	N/A	13	N/A	N/A	N/A	3	0	2	2	1	0	0	112
FY 2008-Avg.	69	23	N/A	12	N/A	N/A	N/A	2	0	2	2	2	0	0	119
FY 2007-Avg.	63	23	N/A	11	N/A	N/A	N/A	2	0	1	2	1	0	0	109
FY 2006-Avg.	39	34	N/A	14	N/A	N/A	N/A	3	0	1	2	1	0	0	98

Definitions of Release Types

See previous page.

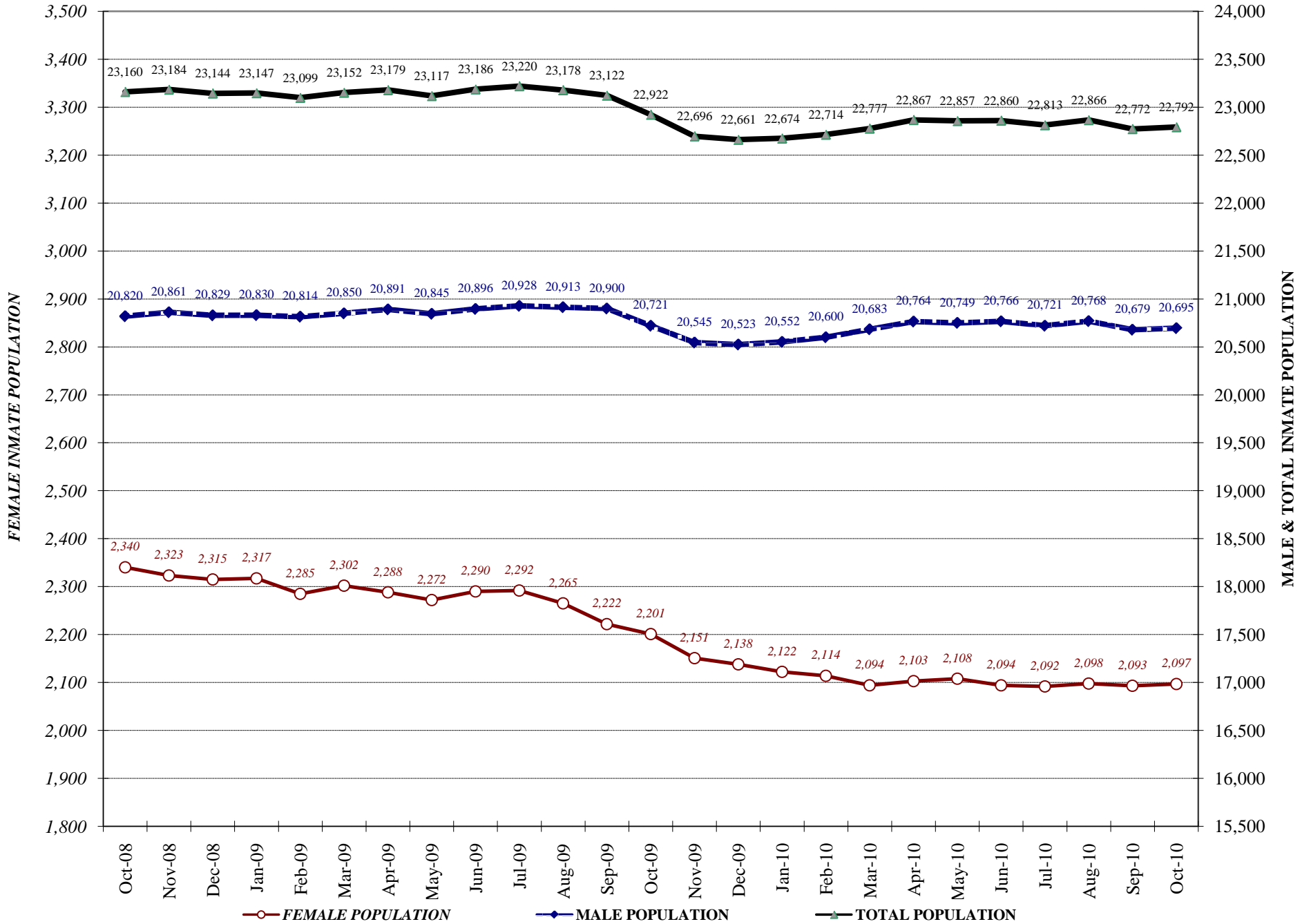
# COLORADO DEPARTMENT OF CORRECTIONS

## Adult Prison Releases



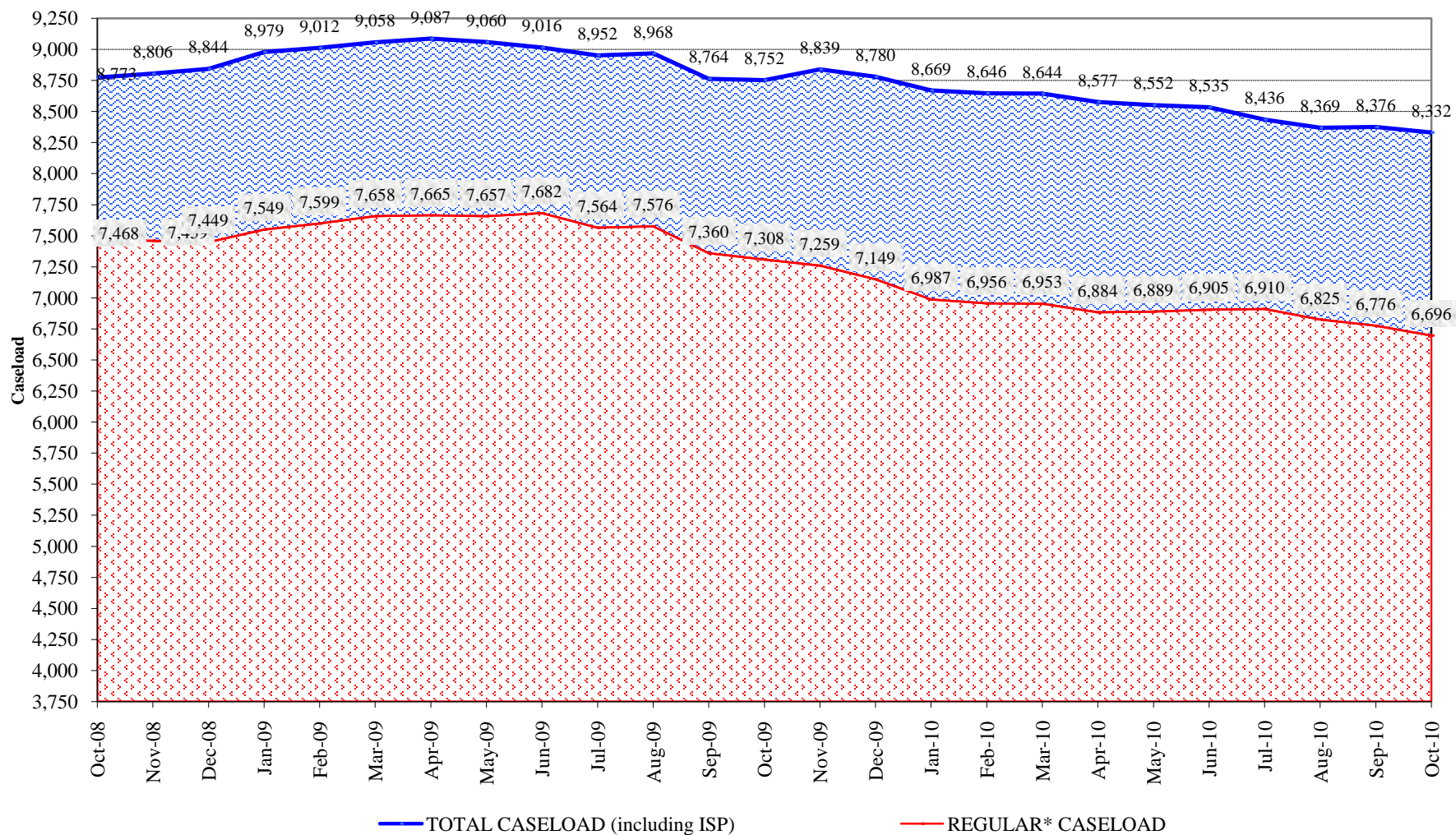
Total releases include releases to discretionary parole and accelerated transition, mandatory parole/reparole and HB1351, all types of discharges and other releases as detailed on the previous two pages.

## COLORADO DEPARTMENT OF CORRECTIONS Adult Jurisdictional Inmate Population





## COLORADO DEPARTMENT OF CORRECTIONS Parole Population



\* Regular caseload includes interstate parole, but excludes out-of-state parolees and absconders.