

**COLORADO DEPARTMENT OF CORRECTIONS  
MONTHLY POPULATION AND CAPACITY REPORT  
as of August 31, 2010**

	8/31/2010	----- 8 /31/10 -----			3-Sep-10  ----- 8/31/09 -----	
	OPERATIONAL CAPACITY <sup>(1)</sup>	ON-GRDS POPULATION	OFF-GRDS POPULATION	TOTAL POPULATION	OPERATIONAL CAPACITY <sup>(1)</sup>	ON-GRDS POPULATION
COLO STATE PENITENTIARY	756	750	7	757	756	752
CENTENNIAL CORR FAC	336	303	0	303	336	308
STERLING CORR FAC	2,545	2,518	23	2,541	2,545	2,513
LIMON CORR FAC	951	945	8	953	953	948
ARK VALLEY CORR FAC	1,007	1,004	11	1,015	1,007	1,000
BUENA VISTA CORR FAC	920	916	16	932	926	781
BUENA VISTA MIN CTR	292	268	22	290	292	268
COLO TERR CORR FAC	936	942	8	950	944	937
FORT LYON CORR FAC	500	489	7	496	500	487
FREMONT CORR FAC	1,661	1,653	16	1,669	1,661	1,604
LA VISTA CORR FAC	519	496	6	502	519	475
ARROWHEAD CORR CTR	494	490	0	490	494	490
FOUR MILE CORR CTR	499	496	1	497	499	494
TRINIDAD CORR FAC	484	478	3	481	484	476
S.T.U. at LA VISTA	30	25	1	26	30	23
SKYLINE CORR CTR	249	249	0	249	249	248
COLORADO CORR CTR	150	150	1	151	150	148
DELTA CORR CTR	484	459	2	461	484	478
RIFLE CORR CTR	192	187	0	187	192	173
COLO CORR ALT PROGRAM	0	0	0	0	100	73
DENVER WOMEN'S CORR FAC	976	956	10	966	976	892
DENVER REC DIAG CTR	480	503	18	521	480	471
SAN CARLOS CORR FAC	255	246	5	251	255	248
<b>***SUBTOTAL***</b>	<b>14,716</b>	<b>14,523</b>	<b>165</b>	<b>14,688</b>	<b>14,832</b>	<b>14,287</b>
<b>CONTRACTS:</b>						
BENT COUNTY CORR CTR		1,378	23	1,401		1,377
CROWLEY COUNTY CORR FAC		1,630	21	1,651		1,638
KIT CARSON COUNTY CORR FAC		816	8	824		1,354
CHEYENNE MTN REENTRY CTR		732	5	737		727
HIGH PLAINS CORR FAC		0	0	0		269
<b>OFF-GROUNDS POPULATION:</b>						
ESCAPEES/WALKAWAYS			222	229		288
REVOCATIONS-JAIL				0		221
<b>JAIL BACKLOG:</b>						
BACKLOG LESS THAN 72 HOURS			61		21	
BACKLOG GREATER THAN 72 HOURS (FISCAL YTD AVE =160)			136		46	
BACKLOG-PAROLEES AWAITING TRANSFER			98		53	
<b>TOTAL JAIL BACKLOG</b>			<b>295</b>			<b>120</b>
<b>COUNTY JAIL CONTRACTS</b>			<b>72</b>			<b>24</b>
<b>COMMUNITY CORRECTIONS</b>						
<b>COMMUNITY</b>						
RESIDENTIAL		1,657		1,657	1,637	1,637
NON-RESIDENTIAL			134	134	79	79
PAROLE REVOCATIONS				0	0	0
REVOKED-RET TO CUST		248	141	389	270	270
REGRESSIONS			39	39	60	60
<b>TOTAL COMMUNITY</b>		<b>1,905</b>	<b>314</b>	<b>2,219</b>	<b>2,046</b>	<b>2,046</b>
<b>ISP</b>						
RESIDENTIAL		716		716	778	778
NON-RESIDENTIAL			30	30	39	39
REGRESSIONS			4	4	10	10
<b>TOTAL ISP</b>		<b>716</b>	<b>34</b>	<b>750</b>	<b>827</b>	<b>827</b>
<b>TOTAL COMM. CORRECTIONS</b>		<b>2,621</b>	<b>348</b>	<b>2,969</b>	<b>2,873</b>	<b>2,873</b>
MALE POPULATION				<b>20,768</b>		20,913
FEMALE POPULATION				<b>2,098</b>		2,265
<b>**TOTAL INMATE JURISDICTIONAL POPULATION**</b>				<b>22,866</b>		<b>23,178</b>

<sup>(1)</sup>OPERATIONAL CAPACITY INCLUDES ALL BEDS AVAILABLE FOR USE, INCLUDING MANAGEMENT CONTROL UNITS, BUT EXCLUDES EMERGENCY DOUBLE BUNKING.

**COLORADO DEPARTMENT OF CORRECTIONS**  
**MONTHLY POPULATION AND CAPACITY REPORT**  
as of August 31, 2010

3-Sep-10

CURRENT MONTH CHANGES IN CAPACITY:

**NET MONTHLY GROWTH RATE:**

CURRENT MONTH	53
FISCAL YEAR-TO-DATE AVERAGE	3

**YOUTHFUL OFFENDER SYSTEM**

	----- 8/31/10 -----	COMM. CORR.	TOTAL POPULATION	8/31/09 TOTAL POPULATION
	PUEBLO			
INTAKE/IDO	9		9	4
RFP/REMEDICATION	11		11	8
PHASE I	189		189	158
PHASE II	9		9	12
PHASE III		38	38	32
OFF GROUNDS/BACKLOG			3	6
<b>**TOTAL Y.O.S. POPULATION**</b>	<b>218</b>	<b>38</b>	<b>259</b>	<b>220</b>

	CURRENT MONTH	FISCAL YR. TO DATE
YOS ADMISSIONS	5	11
YOS RELEASES:		
COMPLETION OF SENTENCE	2	4
JUDICIAL RELEASE TO PROB/CT ORD DISCHG	0	0
JUDICIAL TRANSFER TO DOC	0	0
TERMINATION/FAILURE	0	1
DECEASED	0	0
TOTAL RELEASES	2	5

**PAROLE CASELOAD**

	----- 08/31/2010 -----	----- 07/31/2010 -----	----- 8/31/09 -----				
	DOMESTIC	INTERST PAR/PROB	TOTAL CASELOAD	DOMESTIC	TOTAL CASELOAD	DOMESTIC	TOTAL CASELOAD
DENVER REGION							
REGULAR	2,499	86	2,585	2,561	2,645	2,718	2,795
ISP	705		705	698	698	639	639
SUBTOTAL	3,204	86	3,290	3,259	3,343	3,357	3,434
NORTHEAST REGION							
REGULAR	1,800	101	1,901	1,817	1,916	1,973	2,071
ISP	379		379	370	370	341	341
SUBTOTAL	2,179	101	2,280	2,187	2,286	2,314	2,412
SOUTHEAST REGION							
REGULAR	1,642	76	1,718	1,669	1,750	1,881	1,974
ISP	331		331	335	335	287	287
SUBTOTAL	1,973	76	2,049	2,004	2,085	2,168	2,261
WESTERN REGION							
REGULAR	570	51	621	546	599	685	736
ISP	129		129	123	123	125	125
SUBTOTAL	699	51	750	669	722	810	861
TOTAL CASELOAD							
REGULAR	6,511	314	6,825	6,593	6,910	7,257	7,576
ISP	1,544		1,544	1,526	1,526	1,392	1,392
TOTAL	8,055	314	8,369	8,119	8,436	8,649	8,968
ADDITIONAL CASELOAD:							
OUT-OF-STATE PAROLEES			2,057		2,092		2,025
PAROLEE ABSCONDBERS			750		724		705



**COLORADO DEPARTMENT OF CORRECTIONS**  
ADULT INMATE JURISDICTIONAL POPULATION (1)

DATE: 9/3/2010

DATE	MALE POPULATION			FEMALE POPULATION			TOTAL POPULATION		
	Male Population	Net Change	Fiscal Y-T-D Average	Female Population	Net Change	Fiscal Y-T-D Average	Total Population	Net Change	Fiscal Y-T-D Average
<b>08-31-10</b>	<b>20,768</b>	<b>47</b>	<b>1</b>	<b>2,098</b>	<b>6</b>	<b>2</b>	<b>22,866</b>	<b>53</b>	<b>3</b>
07-31-10	20,721	-45		2,092	-2		22,813	-47	
<b>06-30-10</b>	<b>20,766</b>	<b>17</b>		<b>2,094</b>	<b>-14</b>		<b>22,860</b>	<b>3</b>	
05-31-10	20,749	-15		2,108	5		22,857	-10	
04-30-10	20,764	81		2,103	9		22,867	90	
03-31-10	20,683	83		2,094	-20		22,777	63	
02-28-10	20,600	48		2,114	-8		22,714	40	
01-31-10	20,552	29		2,122	-16		22,674	13	
12-31-09	20,523	-22	-11	2,138	-13	-16	22,661	-35	-27
11-30-09	20,545	-176		2,151	-50		22,696	-226	
10-31-09	20,721	-179		2,201	-21		22,922	-200	
09-30-09	20,900	-13		2,222	-43		23,122	-56	
08-31-09	20,913	-15		2,265	-27		23,178	-42	
07-31-09	20,928	32		2,292	2		23,220	34	
<b>06-30-09</b>	<b>20,896</b>	<b>51</b>		<b>2,290</b>	<b>18</b>		<b>23,186</b>	<b>69</b>	
05-31-09	20,845	-46		2,272	-16		23,117	-62	
04-30-09	20,891	41		2,288	-14		23,179	27	
03-31-09	20,850	36		2,302	17		23,152	53	
02-28-09	20,814	-16		2,285	-32		23,099	-48	
01-31-09	20,830	1		2,317	2		23,147	3	
12-31-08	20,829	-32	16	2,315	-8	-1	23,144	-40	15
11-30-08	20,861	41		2,323	-17		23,184	24	
10-31-08	20,820	85		2,340	9		23,160	94	
09-30-08	20,735	-33		2,331	27		23,066	-6	
08-31-08	20,768	87		2,304	-10		23,072	77	
07-31-08	20,681	-3		2,314	9		22,995	6	
<b>06-30-08</b>	<b>20,684</b>	<b>-48</b>		<b>2,305</b>	<b>-12</b>		<b>22,989</b>	<b>-60</b>	
05-31-08	20,732	29		2,317	-27		23,049	2	
04-30-08	20,703	65		2,344	-11		23,047	54	
03-31-08	20,638	112		2,355	19		22,993	131	
02-29-08	20,526	51		2,336	-3		22,862	48	
01-31-08	20,475	98		2,339	-19		22,814	79	
12-31-07	20,377	-60	42	2,358	-1	-3	22,735	-61	39
11-30-07	20,437	94		2,359	29		22,796	123	
10-31-07	20,343	85		2,330	2		22,673	87	
09-30-07	20,258	-4		2,328	6		22,586	2	
08-31-07	20,262	107		2,322	-14		22,584	93	
07-31-07	20,155	-23		2,336	-5		22,491	-28	
<b>06-30-07</b>	<b>20,178</b>		<b>32</b>	<b>2,341</b>		<b>10</b>	<b>22,519</b>		<b>42</b>
<b>06-30-06</b>	<b>19,792</b>		<b>97</b>	<b>2,220</b>		<b>12</b>	<b>22,012</b>		<b>109</b>
<b>06-30-05</b>	<b>18,631</b>		<b>68</b>	<b>2,073</b>		<b>27</b>	<b>20,704</b>		<b>95</b>
<b>06-30-04</b>	<b>17,814</b>		<b>49</b>	<b>1,755</b>		<b>11</b>	<b>19,569</b>		<b>60</b>
<b>06-30-03</b>	<b>17,226</b>		<b>57</b>	<b>1,620</b>		<b>10</b>	<b>18,846</b>		<b>67</b>
<b>06-30-02</b>	<b>16,539</b>		<b>87</b>	<b>1,506</b>		<b>14</b>	<b>18,045</b>		<b>101</b>
<b>06-30-01</b>	<b>15,493</b>		<b>63</b>	<b>1,340</b>		<b>6</b>	<b>16,833</b>		<b>70</b>
<b>06-30-00</b>	<b>14,733</b>		<b>99</b>	<b>1,266</b>		<b>7</b>	<b>15,999</b>		<b>106</b>
<b>06-30-99</b>	<b>13,547</b>		<b>75</b>	<b>1,179</b>		<b>14</b>	<b>14,726</b>		<b>89</b>
<b>06-30-98</b>	<b>12,647</b>			<b>1,016</b>			<b>13,663</b>		

(1) Adult inmate jurisdictional population includes on-grounds, off-grounds, out-of-state, escapees, and jail backlog and excludes offenders sentenced to the Youthful Offender System (YOS).

**COLORADO DEPARTMENT OF CORRECTIONS**  
**ADULT INMATE RELEASES FROM PRISON**  
**TOTAL Population (Male and Female)**

Revised 11-4-2010

	Parole <sup>(1)</sup>							Discharge			Other				Total
	Discretionary	Mandatory	Wknd. Mand.	Mand. Repar.	Wknd. Mand. Repar.	HB 1351 Early	Accl Trans	Sentence <sup>(2)</sup>	Martin/Cooper	Chgs/Det.	Probation	Ct. Ord. Dsch.	Appeal Bond	Deceased	
Aug-10	191	142	113	131	62	92	0	102	5	19	9	8	0	3	877
Jul-10	210	114	104	121	77	90	1	100	1	19	9	14	0	4	864
FY 2011-Avg	201	128	109	126	70	91	N/A	101	3	19	9	11	0	4	871
FY 2010-Avg.	237	141	121	119	87	46	N/A	36	3	14	10	8	0	4	913
FY 2009-Avg.	343	188	N/A	93	N/A	N/A	N/A	34	5	17	12	10	0	4	898
FY 2008-Avg.	466	186	N/A	88	N/A	N/A	N/A	34	8	17	12	11	0	4	881
FY 2007-Avg.	422	198	N/A	89	N/A	N/A	N/A	31	10	16	13	9	0	4	843
FY 2006-Avg.	234	266	N/A	98	N/A	N/A	N/A	38	13	15	16	10	0	5	746

Definitions of Release Types

**Discretionary parole**-Released to parole through Parole Board discretion prior to mandatory release or sentence discharge date.

**Mandatory parole**-Released to parole on mandatory release date.

**Wknd Mand.**-Mandatory releases scheduled to release on a weekend; released a few days early under Parole Board authority.

**Mand. Repar**-Reparoled on specific date set by Parole Board (includes S.B. 252 reparaes). n/a - breakout not available prior to June 2004.

**Wknd Mand. Repar.**-Mandatory Reparole releases scheduled to release on a weekend; released a few days early under Parole Board authority.

**HB 1351 Early** - Released to parole, subject to earn time provisions of H.B. 09-1351.

**Accl Trans** - Accelerated Transition released to parole prior to mandatory release by parole board based on program eligibility criteria.

**Sentence discharge**-Completion of sentence with no further supervision.

**Martin/ Cooper discharge**-Completion of sentence with no further supervision, sex offender subject to Martin/Cooper Supreme Court decision.

**Chgs/ Det. discharge**-Completion of sentence, released to other law enforcement for pending charges or detainees.

**Probation**-Released by court to probation.

**Ct. Ord. Dsch.**-Released by court order.

**Appeal Bond**-Released by court to appeal bond.

**Deceased**-Offender death in prison.

<sup>(1)</sup>Due to the decrease in community transportation services, the Department implemented a procedural change in December 2005 with regards to releasing inmates on weekends. As a result, discretionary releases increased and mandatory releases decreased. However, beginning December 2008, the implementation of a new electronic coding system enabled these releases to be correctly classified as weekend mandatory parole and mandatory reparole releases.

<sup>(2)</sup>Sentence is now a combination of Sentence and HB 1087 due to legislation passed in 2009.

**COLORADO DEPARTMENT OF CORRECTIONS**  
ADULT INMATE RELEASES FROM PRISON

Revised 11/4/2010

**Male Population Only**

	Parole <sup>(1)</sup>							Discharge			Other				Total
	Discretionary	Mandatory	Wknd. Mand.	Mand. Repar.	Wknd. Mand. Repar.	HB 1351 Early	Accl Trans	Sentence <sup>(2)</sup>	Martin/Cooper	Chgs/Det.	Probation	Ct. Ord. Dsch.	Appeal Bond	Deceased	
Aug-10	154	125	104	114	53	81	0	93	5	18	8	8	0	3	766
Jul-10	177	105	97	105	71	79	0	85	1	17	9	13	0	3	762
FY 2011-Avg.	166	115	101	110	62	80	0	89	3	18	9	11	0	3	764
FY 2010-Avg.	196	129	108	104	76	39	N/A	33	3	13	9	7	0	4	797
FY 2009-Avg.	294	167	N/A	80	N/A	N/A	N/A	31	5	15	10	9	0	4	786
FY 2008-Avg.	397	162	N/A	76	N/A	N/A	N/A	32	8	16	10	9	0	4	762
FY 2007-Avg.	359	175	N/A	77	N/A	N/A	N/A	29	9	15	11	8	0	4	733
FY 2006-Avg.	196	233	N/A	84	N/A	N/A	N/A	35	13	14	15	9	0	5	648

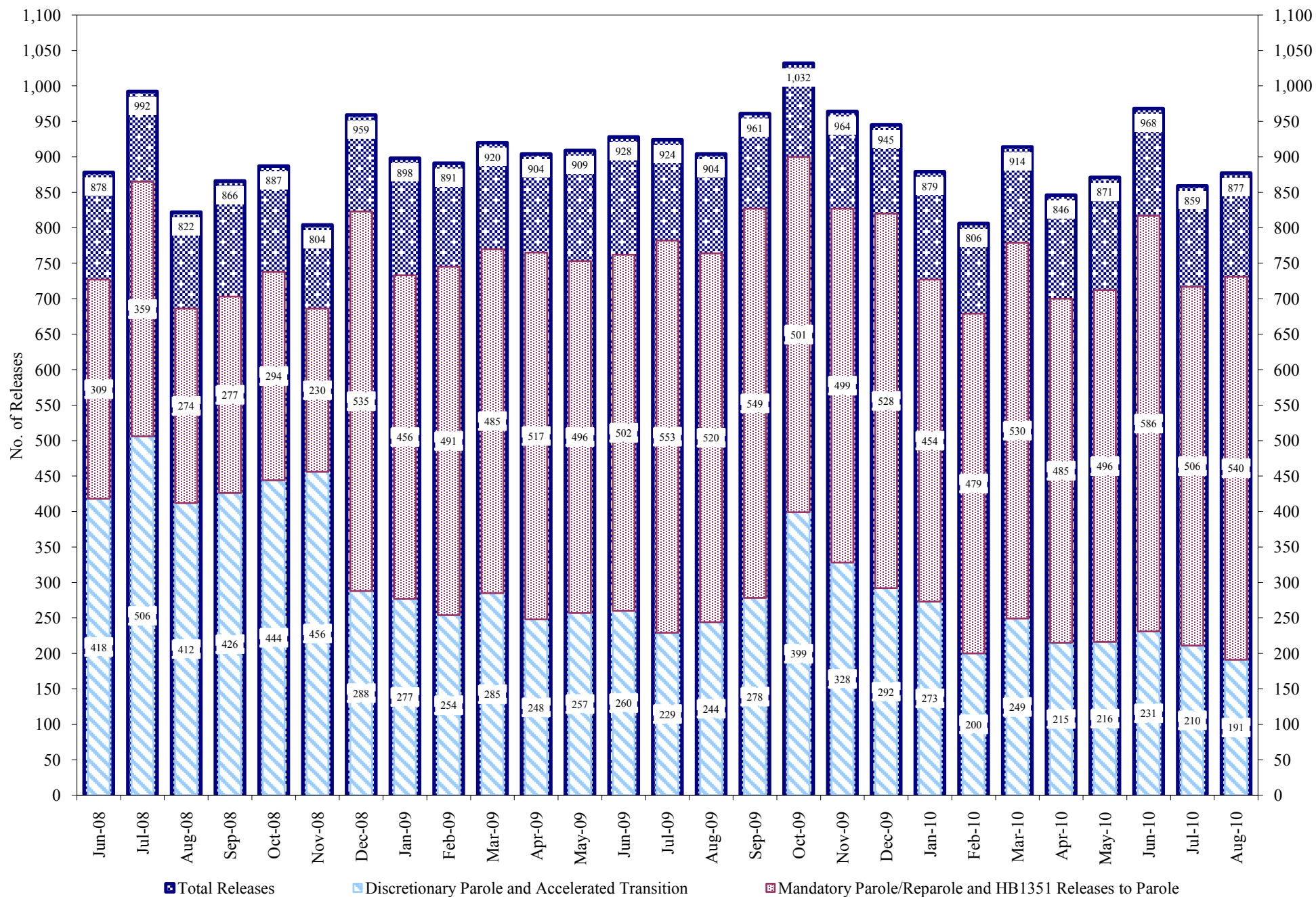
**Female Population Only**

	Parole*							Discharge			Other				Total
	Discretionary	Mandatory	Wknd. Mand.	Mand. Repar.	Wknd. Mand. Repar.	HB 1351 Early	Accl Trans	Sentence Discharge	Martin/Cooper	Chgs/Det.	Probation	Ct. Ord. Dsch.	Appeal Bond	Deceased	
Aug-10	37	17	9	17	9	11	0	9	0	1	1	0	0	0	111
Jul-10	33	9	7	16	6	11	1	15	0	2	0	1	0	1	102
FY 2011-Avg.	35	13	8	17	8	11	1	12	0	2	1	1	0	1	107
FY 2010-Avg.	41	13	13	14	10	7	N/A	3	0	1	1	1	0	0	117
FY 2009-Avg.	49	21	N/A	13	N/A	N/A	N/A	3	0	2	2	1	0	0	112
FY 2008-Avg.	69	23	N/A	12	N/A	N/A	N/A	2	0	2	2	2	0	0	119
FY 2007-Avg.	63	23	N/A	11	N/A	N/A	N/A	2	0	1	2	1	0	0	109
FY 2006-Avg.	39	34	N/A	14	N/A	N/A	N/A	3	0	1	2	1	0	0	98

Definitions of Release Types

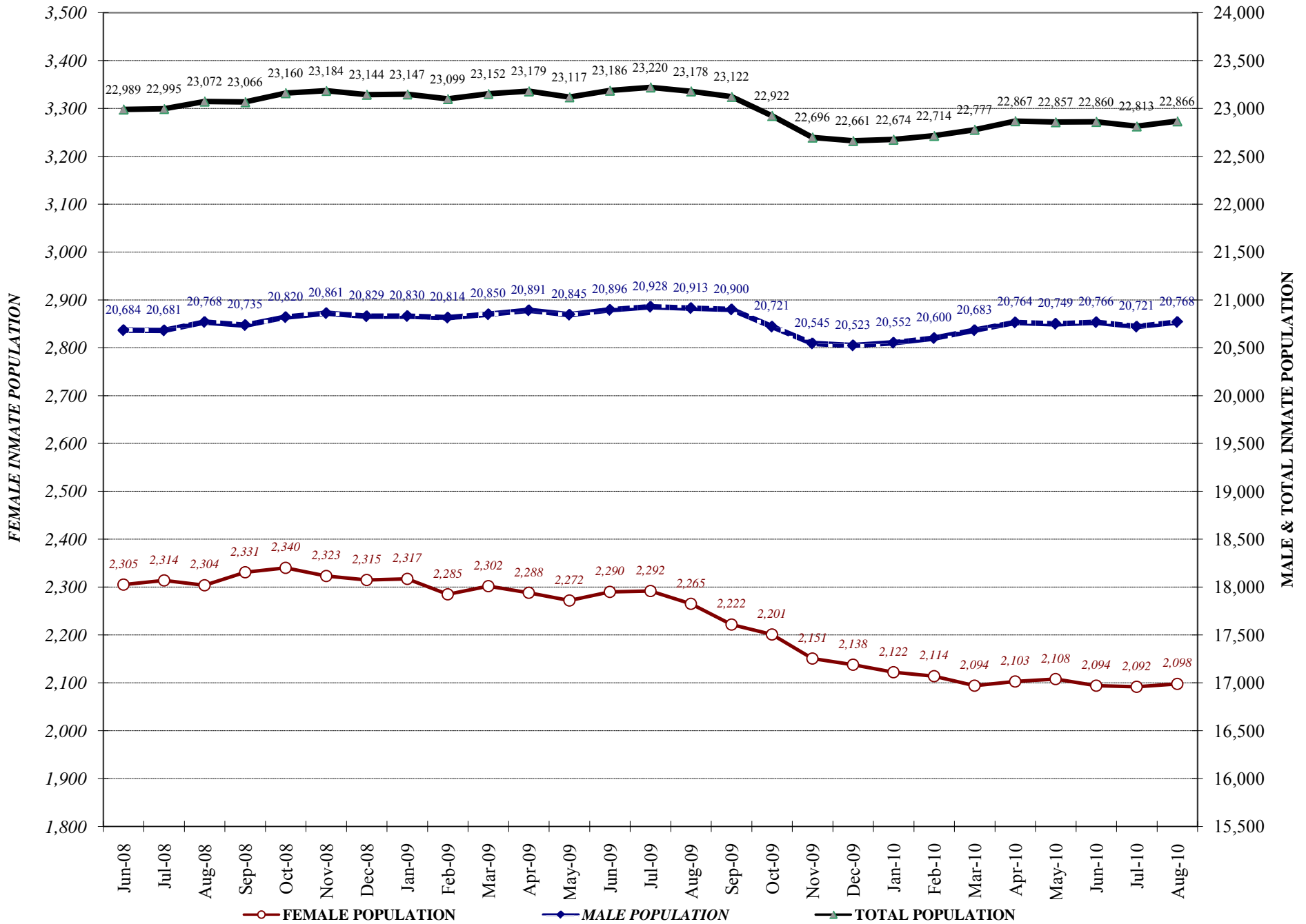
See previous page.

## COLORADO DEPARTMENT OF CORRECTIONS Adult Prison Releases



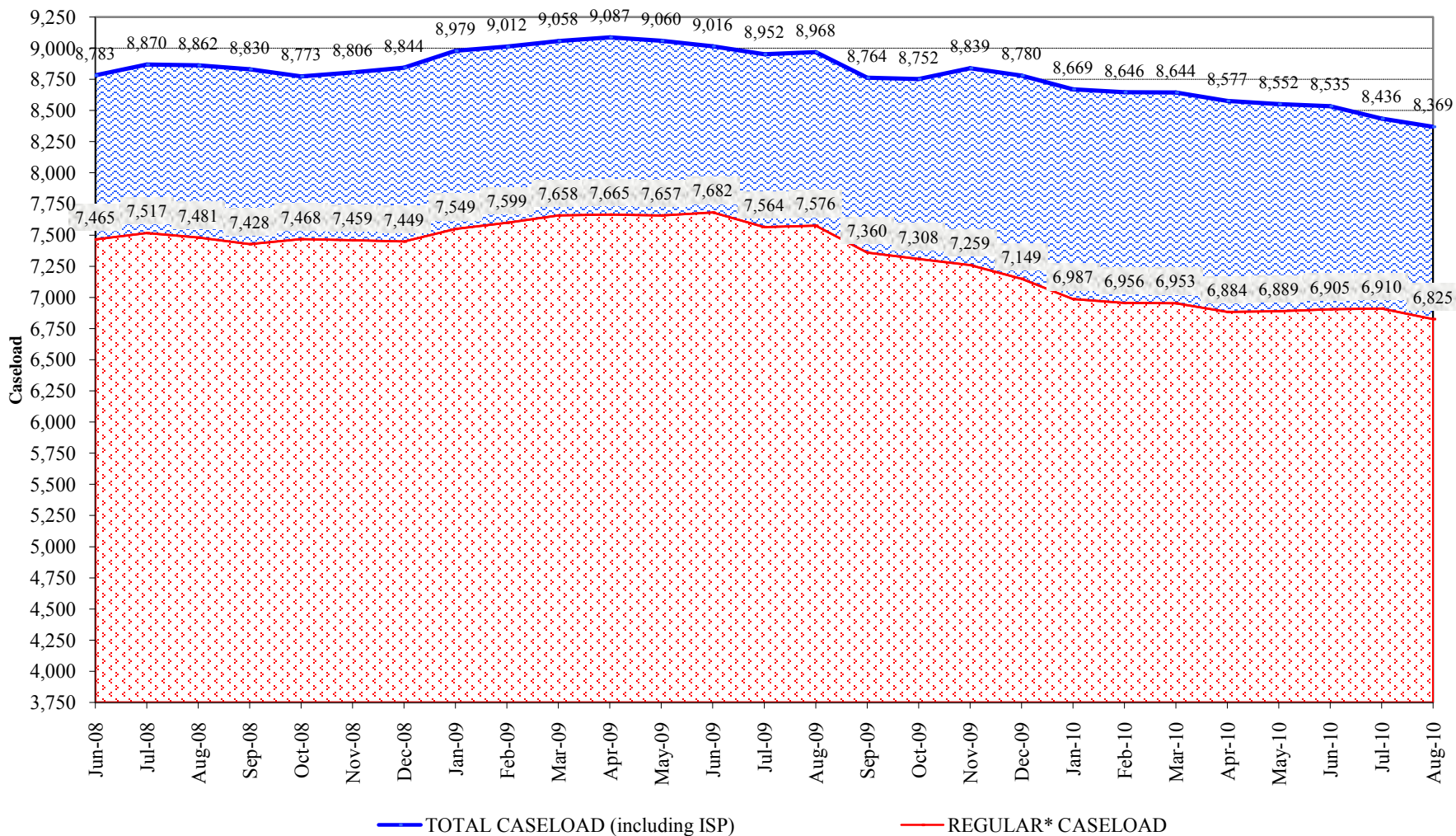
Total releases include releases to discretionary parole and accelerated transition, mandatory parole/reparole and HB1351, all types of discharges and other releases as detailed on the previous two pages.

## COLORADO DEPARTMENT OF CORRECTIONS Adult Jurisdictional Inmate Population





## COLORADO DEPARTMENT OF CORRECTIONS Parole Population



\* Regular caseload includes interstate parole, but excludes out-of-state parolees and absconders.