

**COLORADO DEPARTMENT OF CORRECTIONS
MONTHLY POPULATION AND CAPACITY REPORT
as of July 31, 2010**

	7/31/2010 OPERATIONAL CAPACITY ⁽¹⁾	----- 7/31/10 -----			5-Aug-10 ----- 7/31/09 -----	
		ON-GRDS POPULATION	OFF-GRDS POPULATION	TOTAL POPULATION	OPERATIONAL CAPACITY ⁽¹⁾	ON-GRDS POPULATION
COLO STATE PENITENTIARY	756	752	2	754	756	748
CENTENNIAL CORR FAC	336	320	0	320	336	304
STERLING CORR FAC	2,545	2,518	20	2,538	2,545	2,525
LIMON CORR FAC	951	927	13	940	953	949
ARK VALLEY CORR FAC	1,007	997	3	1,000	1,007	1,004
BUENA VISTA CORR FAC	920	907	17	924	926	853
BUENA VISTA MIN CTR	292	288	3	291	292	283
COLO TERR CORR FAC	936	935	11	946	944	905
FORT LYON CORR FAC	500	483	4	487	500	487
FREMONT CORR FAC	1,661	1,639	14	1,653	1,661	1,649
LA VISTA CORR FAC	519	486	5	491	519	489
ARROWHEAD CORR CTR	494	490	3	493	494	489
FOUR MILE CORR CTR	499	496	5	501	499	496
TRINIDAD CORR FAC	484	480	4	484	484	475
S.T.U. at LA VISTA	30	15	0	15	30	27
SKYLINE CORR CTR	249	248	0	248	249	249
COLORADO CORR CTR	150	150	1	151	150	139
DELTA CORR CTR	484	468	2	470	484	473
RIFLE CORR CTR	192	186	1	187	192	167
COLO CORR ALT PROGRAM ⁽²⁾	0	0	1	1	100	70
DENVER WOMEN'S CORR FAC	976	961	12	973	976	888
DENVER REC DIAG CTR	480	507	17	524	480	492
SAN CARLOS CORR FAC	255	248	5	253	255	245
SUBTOTAL	14,716	14,501	143	14,644	14,832	14,406
CONTRACTS:						
BENT COUNTY CORR CTR		1,386	24	1,410		1,345
CROWLEY COUNTY CORR FAC		1,652	21	1,673		1,640
KIT CARSON COUNTY CORR FAC		985	11	996		1,313
CHEYENNE MTN REENTRY CTR		698	1	699		754
HIGH PLAINS CORR FAC		0	0	0		272
OFF-GROUNDS POPULATION:						
ESCAPEES/WALKAWAYS				229		227
REVOICATIONS-JAIL				0		0
JAIL BACKLOG:						
BACKLOG LESS THAN 72 HOURS			33		32	
BACKLOG GREATER THAN 72 HOURS (FISCAL YTD AVE =179)			92		38	
BACKLOG-PAROLEES AWAITING TRANSFER			92		70	
TOTAL JAIL BACKLOG			217			140
COUNTY JAIL CONTRACTS			66			22
COMMUNITY CORRECTIONS						
COMMUNITY						
RESIDENTIAL		1,627		1,627	1,585	1,585
NON-RESIDENTIAL			90	90	102	102
PAROLE REVOICATIONS				0	0	0
REVOKED-RET TO CUST		249	97	346	290	290
REGRESSIONS			69	69	44	44
TOTAL COMMUNITY		1,876	256	2,132	2,021	2,021
ISP						
RESIDENTIAL		703		703	779	779
NON-RESIDENTIAL			32	32	40	40
REGRESSIONS			12	12	5	5
TOTAL ISP		703	44	747	824	824
TOTAL COMM. CORRECTIONS		2,579	300	2,879	2,845	2,845
MALE POPULATION				20,721		20,928
FEMALE POPULATION				2,092		2,292
TOTAL INMATE JURISDICTIONAL POPULATION				22,813		23,220

⁽¹⁾OPERATIONAL CAPACITY INCLUDES ALL BEDS AVAILABLE FOR USE, INCLUDING MANAGEMENT CONTROL UNITS, BUT EXCLUDES EMERGENCY DOUBLE BUNKING.

⁽²⁾COLO CORR ALT PROGRAM LAST CLASS GRADUATED ON 05/27/2010. THE 1 OFFENDER OFF-GROUNDS IS IN A COUNTY JAIL AWAITING SENTENCE RECONSIDERATION.

COLORADO DEPARTMENT OF CORRECTIONS
MONTHLY POPULATION AND CAPACITY REPORT
as of July 31, 2010

5-Aug-10

CURRENT MONTH CHANGES IN CAPACITY:

NET MONTHLY GROWTH RATE:

CURRENT MONTH	-47
FISCAL YEAR-TO-DATE AVERAGE	-47

YOUTHFUL OFFENDER SYSTEM

	----- 7/31/10 -----			7/31/09
	PUEBLO	COMM. CORR.	TOTAL POPULATION	TOTAL POPULATION
INTAKE/IDO	5		5	6
RFP/REMEDICATION	8		8	6
PHASE I	193		193	150
PHASE II	9		9	13
PHASE III		36	36	29
OFF GROUNDS/BACKLOG			5	13
TOTAL Y.O.S. POPULATION	215	36	256	217

	CURRENT MONTH	FISCAL YR. TO DATE
YOS ADMISSIONS	6	6
YOS RELEASES:		
COMPLETION OF SENTENCE	2	2
JUDICIAL RELEASE TO PROB/CT ORD DISCHG	0	0
JUDICIAL TRANSFER TO DOC	0	0
TERMINATION/FAILURE	1	1
DECEASED	0	0
TOTAL RELEASES	3	3

PAROLE CASELOAD

	----- 07/31/2010 -----			----- 06/30/2010 -----		----- 7/31/09 -----	
	DOMESTIC	INTERST PAR/PROB	TOTAL CASELOAD	DOMESTIC	TOTAL CASELOAD	DOMESTIC	TOTAL CASELOAD
DENVER REGION							
REGULAR	2,561	84	2,645	2,552	2,631	2,726	2,803
ISP	698		698	732	732	640	640
SUBTOTAL	3,259	84	3,343	3,284	3,363	3,366	3,443
NORTHEAST REGION							
REGULAR	1,817	99	1,916	1,810	1,909	1,935	2,032
ISP	370		370	405	405	351	351
SUBTOTAL	2,187	99	2,286	2,215	2,314	2,286	2,383
SOUTHEAST REGION							
REGULAR	1,669	81	1,750	1,692	1,770	1,882	1,966
ISP	335		335	351	351	283	283
SUBTOTAL	2,004	81	2,085	2,043	2,121	2,165	2,249
WESTERN REGION							
REGULAR	546	53	599	544	595	713	763
ISP	123		123	142	142	114	114
SUBTOTAL	669	53	722	686	737	827	877
TOTAL CASELOAD							
REGULAR	6,593	317	6,910	6,598	6,905	7,256	7,564
ISP	1,526		1,526	1,630	1,630	1,388	1,388
TOTAL	8,119	317	8,436	8,228	8,535	8,644	8,952
ADDITIONAL CASELOAD:							
OUT-OF-STATE PAROLEES			2,092		2,100		2,041
PAROLEE ABSCONDERS			724		693		682

COLORADO DEPARTMENT OF CORRECTIONS
ADULT INMATE JURISDICTIONAL POPULATION (1)

DATE: 8/5/2010

DATE	MALE POPULATION			FEMALE POPULATION			TOTAL POPULATION		
	Male Population	Net Change	Fiscal Y-T-D Average	Female Population	Net Change	Fiscal Y-T-D Average	Total Population	Net Change	Fiscal Y-T-D Average
07-31-10	20,721	-45	-45	2,092	-2	-2	22,813	-47	-47
06-30-10	20,766	17		2,094	-14		22,860	3	
05-31-10	20,749	-15		2,108	5		22,857	-10	
04-30-10	20,764	81		2,103	9		22,867	90	
03-31-10	20,683	83		2,094	-20		22,777	63	
02-28-10	20,600	48		2,114	-8		22,714	40	
01-31-10	20,552	29		2,122	-16		22,674	13	
12-31-09	20,523	-22	-11	2,138	-13	-16	22,661	-35	-27
11-30-09	20,545	-176		2,151	-50		22,696	-226	
10-31-09	20,721	-179		2,201	-21		22,922	-200	
09-30-09	20,900	-13		2,222	-43		23,122	-56	
08-31-09	20,913	-15		2,265	-27		23,178	-42	
07-31-09	20,928	32		2,292	2		23,220	34	
06-30-09	20,896	51		2,290	18		23,186	69	
05-31-09	20,845	-46		2,272	-16		23,117	-62	
04-30-09	20,891	41		2,288	-14		23,179	27	
03-31-09	20,850	36		2,302	17		23,152	53	
02-28-09	20,814	-16		2,285	-32		23,099	-48	
01-31-09	20,830	1		2,317	2		23,147	3	
12-31-08	20,829	-32	16	2,315	-8	-1	23,144	-40	15
11-30-08	20,861	41		2,323	-17		23,184	24	
10-31-08	20,820	85		2,340	9		23,160	94	
09-30-08	20,735	-33		2,331	27		23,066	-6	
08-31-08	20,768	87		2,304	-10		23,072	77	
07-31-08	20,681	-3		2,314	9		22,995	6	
06-30-08	20,684	-48		2,305	-12		22,989	-60	
05-31-08	20,732	29		2,317	-27		23,049	2	
04-30-08	20,703	65		2,344	-11		23,047	54	
03-31-08	20,638	112		2,355	19		22,993	131	
02-29-08	20,526	51		2,336	-3		22,862	48	
01-31-08	20,475	98		2,339	-19		22,814	79	
12-31-07	20,377	-60	42	2,358	-1	-3	22,735	-61	39
11-30-07	20,437	94		2,359	29		22,796	123	
10-31-07	20,343	85		2,330	2		22,673	87	
09-30-07	20,258	-4		2,328	6		22,586	2	
08-31-07	20,262	107		2,322	-14		22,584	93	
07-31-07	20,155	-23		2,336	-5		22,491	-28	
06-30-07	20,178		32	2,341		10	22,519		42
06-30-06	19,792		97	2,220		12	22,012		109
06-30-05	18,631		68	2,073		27	20,704		95
06-30-04	17,814		49	1,755		11	19,569		60
06-30-03	17,226		57	1,620		10	18,846		67
06-30-02	16,539		87	1,506		14	18,045		101
06-30-01	15,493		63	1,340		6	16,833		70
06-30-00	14,733		99	1,266		7	15,999		106
06-30-99	13,547		75	1,179		14	14,726		89
06-30-98	12,647			1,016			13,663		

(1) Adult inmate jurisdictional population includes on-grounds, off-grounds, out-of-state, escapees, and jail backlog and excludes offenders sentenced to the Youthful Offender System (YOS).

COLORADO DEPARTMENT OF CORRECTIONS
ADULT INMATE RELEASES FROM PRISON
TOTAL Population (Male and Female)

Revised 09/03/2010

	Parole*							Discharge				Other				Total
	Discretionary	Mandatory	Wknd. Mand.	Mand. Repar.	Wknd. Mand. Repar.	HB 1351 Early	Accl Trans	Sentence	H.B. 1087	Martin/Cooper	Chgs/Det.	Probation	Ct. Ord. Dsch.	Appeal Bond	Deceased	
Jul-10	210	114	104	121	77	90	1	44	56	1	19	9	14	0	4	864
Jun-10	231	182	115	153	91	45	0	41	77	2	13	6	8	0	4	968
May-10	214	141	117	132	77	29	2	36	83	4	15	10	9	0	2	871
Apr-10	213	150	126	98	85	26	2	38	65	5	15	11	9	0	3	846
Mar-10	238	147	107	152	74	50	11	38	61	3	12	7	7	0	7	914
Feb-10	197	114	124	114	83	44	3	32	61	5	10	11	7	1	0	806
Jan-10	251	115	98	121	93	27	22	35	74	2	15	13	8	0	5	879
Dec-09	260	119	121	133	109	46	32	25	52	2	19	12	7	0	8	945
Nov-09	264	141	131	103	88	36	64	31	70	5	8	14	5	1	3	964
Oct-09	277	158	124	91	90	38	122	42	56	1	11	6	10	0	6	1,032
Sep-09	250	151	143	90	107	58	28	34	60	5	13	12	7	0	3	961
Aug-09	244	139	119	116	63	83	N/A	40	59	3	19	9	7	0	3	904
Jul-09	229	171	142	119	88	33	N/A	33	68	4	8	14	10	0	5	924
FY 2010-Avg.	237	141	121	119	87	46	N/A	36	65	3	14	10	8	0	4	913
FY 2009-Avg.	343	188	N/A	93	N/A	N/A	N/A	34	63	5	17	12	10	0	4	898
FY 2008-Avg.	466	186	N/A	88	N/A	N/A	N/A	34	56	8	17	12	11	0	4	881
FY 2007-Avg.	422	198	N/A	89	N/A	N/A	N/A	31	50	10	16	13	9	0	4	843
FY 2006-Avg.	234	266	N/A	98	N/A	N/A	N/A	38	50	13	15	16	10	0	5	746

Definitions of Release Types

Discretionary parole-Released to parole through Parole Board discretion prior to mandatory release or sentence discharge date.

Mandatory parole-Released to parole on mandatory release date.

Wknd Mand.-Mandatory releases scheduled to release on a weekend; released a few days early under Parole Board authority.

Mand. Repar-Reparoled on specific date set by Parole Board (includes S.B. 252 reparaes). n/a - breakout not available prior to June 2004.

Wknd Mand. Repar.-Mandatory Reparole releases scheduled to release on a weekend; released a few days early under Parole Board authority.

HB 1351 Early - Released to parole, subject to earn time provisions of H.B. 09-1351.

Accl Trans - Accelerated Transition released to parole prior to mandatory release by parole board based on program eligibility criteria.

Sentence discharge-Completion of sentence with no further supervision.

H.B. 1087 discharge-Completion of sentence with no further supervision, subject to earn time provisions of H.B. 95-1087.

Martin/ Cooper discharge-Completion of sentence with no further supervision, sex offender subject to Martin/Cooper Supreme Court decision.

Chgs/ Det. discharge-Completion of sentence, released to other law enforcement for pending charges or detainees.

Probation-Released by court to probation.

Ct. Ord. Dsch.-Released by court order.

Appeal Bond-Released by court to appeal bond.

Deceased-Offender death in prison.

***Due to the decrease in community transportation services, the Department implemented a procedural change in December 2005 with regards to releasing inmates on weekends. As a result, discretionary releases increased and mandatory releases decreased. However, beginning December 2008, the implementation of a new electronic coding system enabled these releases to be correctly classified as weekend mandatory parole and mandatory reparole releases.**

COLORADO DEPARTMENT OF CORRECTIONS
ADULT INMATE RELEASES FROM PRISON

Revised 09/03/2010

Male Population Only

	Parole*							Discharge				Other				Total
	Discre- tionary	Mand- atory	Wknd. Mand.	Mand. Repar.	Wknd. Mand. Repar.	HB 1351 Early	Accl Trans	Sentence	H.B. 1087	Martin/ Cooper	Chgs/ Det.	Probation	Ct. Ord. Dsch.	Appeal Bond	Deceased	
Jul-10	177	105	97	105	71	79	0	38	47	1	17	9	13	0	3	762
Jun-10	187	166	102	130	78	39	0	36	66	2	12	6	8	0	4	836
May-10	175	132	101	119	73	27	1	28	76	4	15	9	9	0	2	771
Apr-10	176	140	108	87	79	24	2	35	60	5	15	9	8	0	3	751
Mar-10	191	138	94	131	63	45	9	35	53	3	12	6	6	0	6	792
Feb-10	168	102	109	101	74	40	2	30	55	5	10	9	5	0	0	710
Jan-10	209	107	83	107	79	23	18	33	70	2	14	13	6	0	5	769
Dec-09	215	110	110	112	99	35	28	24	47	2	19	11	5	0	7	824
Nov-09	230	120	119	88	77	31	44	30	61	5	6	14	5	1	3	834
Oct-09	232	145	115	84	77	28	107	40	48	1	11	6	10	0	6	910
Sep-09	200	133	129	82	91	48	15	29	55	5	12	10	7	0	3	819
Aug-09	204	124	104	104	55	68	N/A	37	51	2	19	7	7	0	3	785
Jul-09	184	153	127	105	77	23	N/A	32	59	4	8	14	8	0	5	799
FY 2010-Avg.	196	129	108	104	76	39	N/A	33	58	3	13	9	7	0	4	797
FY 2009-Avg.	294	167	N/A	80	N/A	N/A	N/A	31	56	5	15	10	9	0	4	786
FY 2008-Avg.	397	162	N/A	76	N/A	N/A	N/A	32	48	8	16	10	9	0	4	762
FY 2007-Avg.	359	175	N/A	77	N/A	N/A	N/A	29	45	9	15	11	8	0	4	733
FY 2006-Avg.	196	233	N/A	84	N/A	N/A	N/A	35	46	13	14	15	9	0	5	648

Female Population Only

	Parole*							Discharge				Other				Total
	Discre- tionary	Mand- atory	Wknd. Mand.	Mand. Repar.	Wknd. Mand. Repar.	HB 1351 Early	Accl Trans	Sentence	H.B. 1087	Martin/ Cooper	Chgs/ Det.	Probation	Ct. Ord. Dsch.	Appeal Bond	Deceased	
Jul-10	33	9	7	16	6	11	1	6	9	0	2	0	1	0	1	102
Jun-10	44	16	13	23	13	6	0	5	11	0	1	0	0	0	0	132
May-10	39	9	16	13	4	2	1	8	7	0	0	1	0	0	0	100
Apr-10	37	10	18	11	6	2	0	3	5	0	0	2	1	0	0	95
Mar-10	47	9	13	21	11	5	2	3	8	0	0	1	1	0	1	122
Feb-10	29	12	15	13	9	4	1	2	6	0	0	2	2	1	0	96
Jan-10	42	8	15	14	14	4	4	2	4	0	1	0	2	0	0	110
Dec-09	45	9	11	21	10	11	4	1	5	0	0	1	2	0	1	121
Nov-09	34	21	12	15	11	5	20	1	9	0	2	0	0	0	0	130
Oct-09	45	13	9	7	13	10	15	2	8	0	0	0	0	0	0	122
Sep-09	50	18	14	8	16	10	13	5	5	0	1	2	0	0	0	142
Aug-09	40	15	15	12	8	15	N/A	3	8	1	0	2	0	0	0	119
Jul-09	45	18	15	14	11	10	N/A	1	9	0	0	0	2	0	0	125
FY 2010-Avg.	41	13	13	14	10	7	N/A	3	7	0	1	1	1	0	0	117
FY 2009-Avg.	49	21	N/A	13	N/A	N/A	N/A	3	7	0	2	2	1	0	0	112
FY 2008-Avg.	69	23	N/A	12	N/A	N/A	N/A	2	7	0	2	2	2	0	0	119
FY 2007-Avg.	63	23	N/A	11	N/A	N/A	N/A	2	6	0	1	2	1	0	0	109
FY 2006-Avg.	39	34	N/A	14	N/A	N/A	N/A	3	5	0	1	2	1	0	0	98

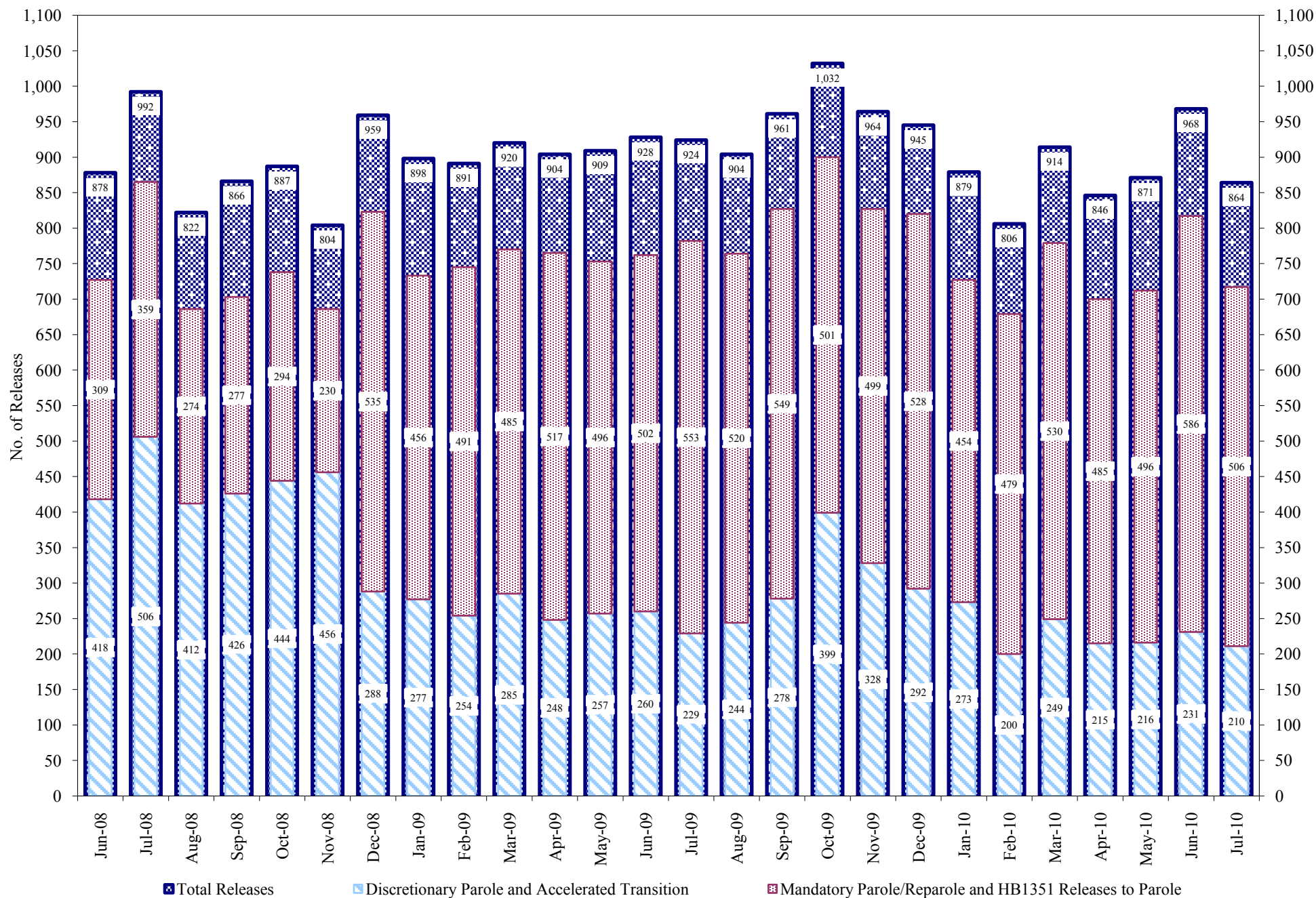
Definitions of Release Types

See previous page.

COLORADO DEPARTMENT OF CORRECTIONS

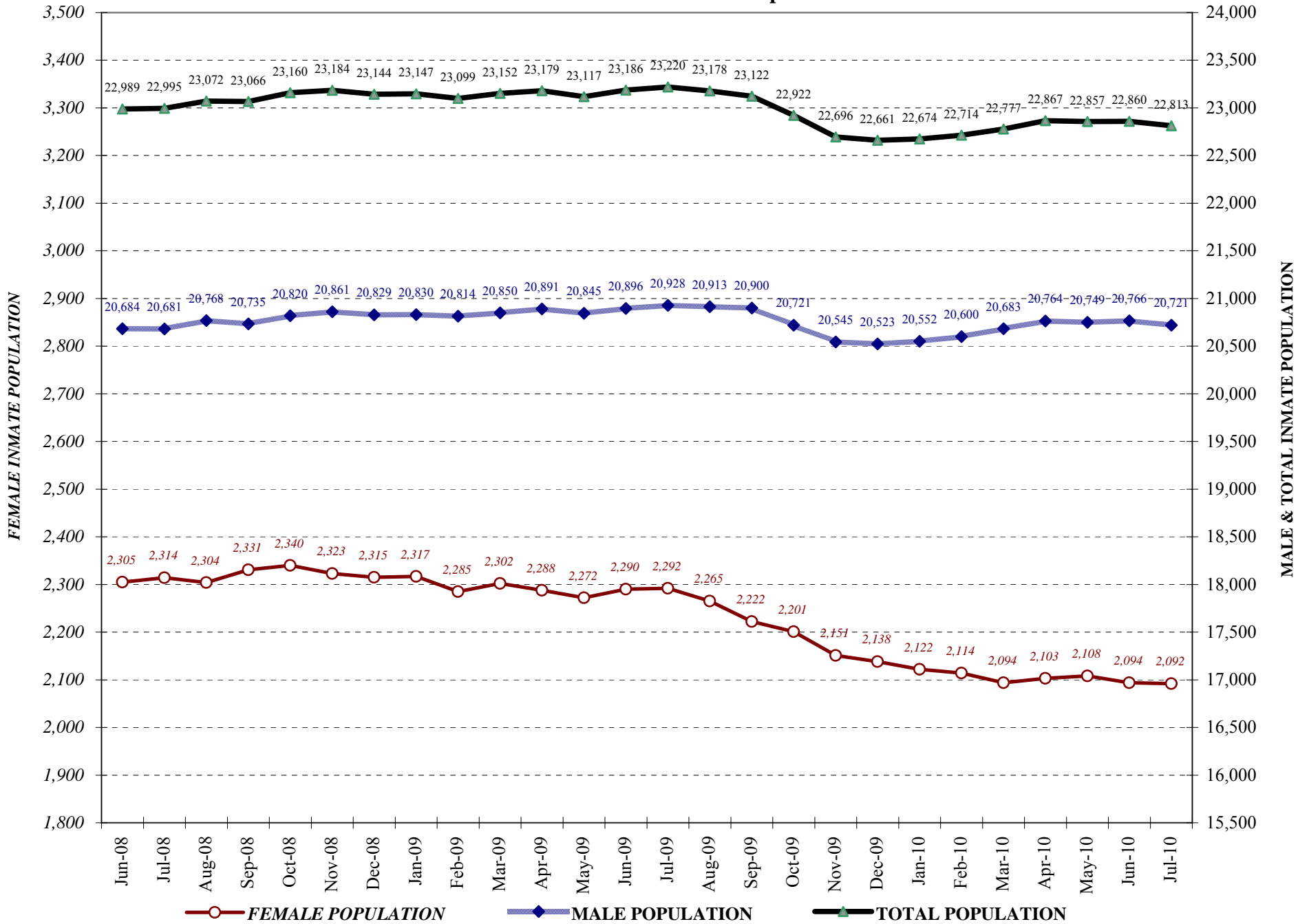
Adult Prison Releases

Revised 09/03/2010

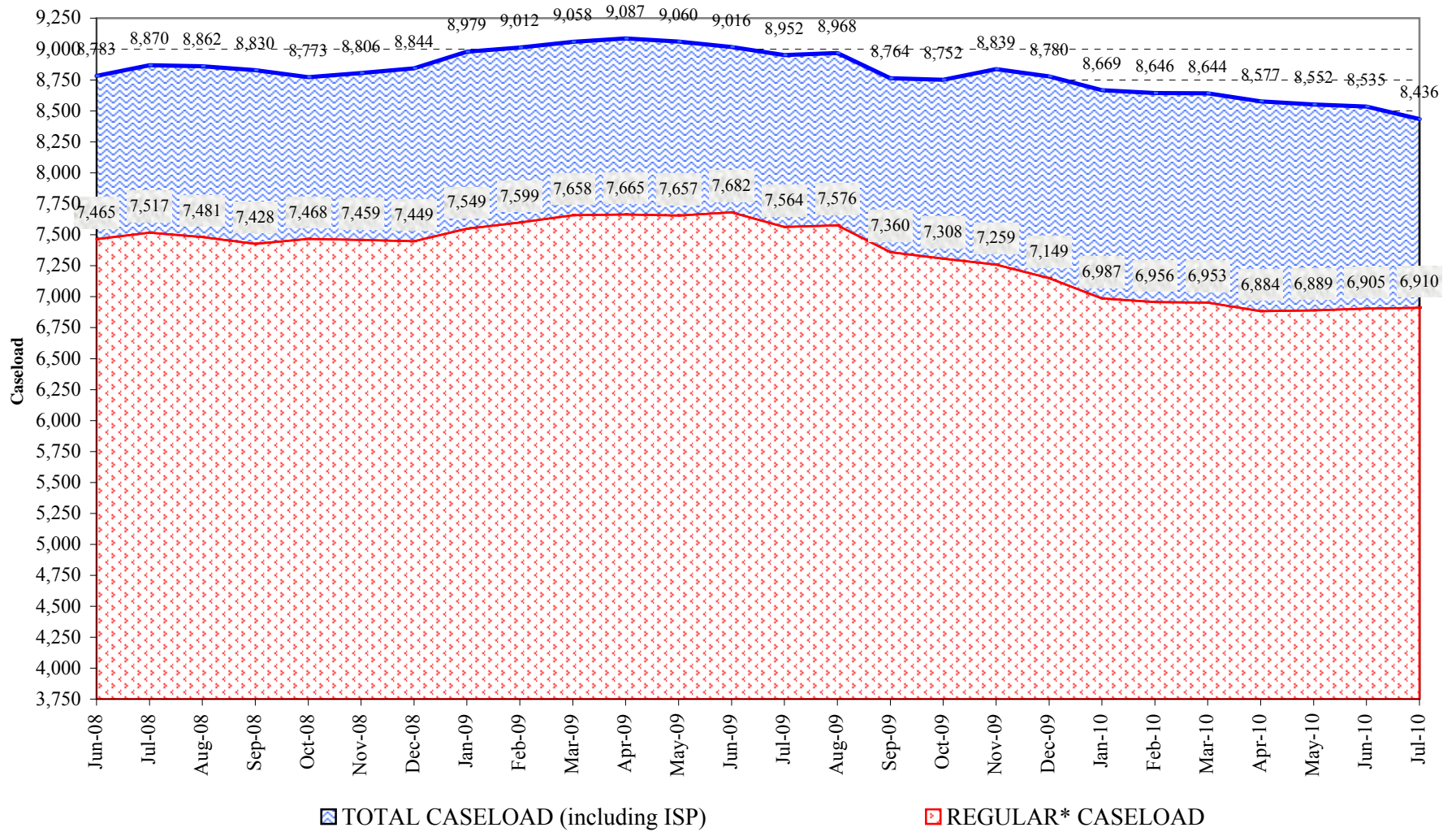


Total releases include releases to discretionary parole and accelerated transition, mandatory parole/reparole and HB1351, all types of discharges and other releases as detailed on the previous two pages.

COLORADO DEPARTMENT OF CORRECTIONS Adult Jurisdictional Inmate Population



COLORADO DEPARTMENT OF CORRECTIONS Parole Population



* Regular caseload includes interstate parole, but excludes out-of-state parolees and absconders.