

COLORADO DEPARTMENT OF CORRECTIONS
MONTHLY POPULATION AND CAPACITY REPORT
as of April 30, 2010

	4/30/2010	4/30/10			5-May-10	
	OPERATIONAL CAPACITY*	ON-GRDS POPULATION	OFF-GRDS POPULATION	TOTAL POPULATION	OPERATIONAL CAPACITY*	ON-GRDS POPULATION
COLO STATE PENITENTIARY	756	747	6	753	756	742
CENTENNIAL CORR FAC	336	312	3	315	336	311
STERLING CORR FAC	2,545	2,520	22	2,542	2,545	2,527
LIMON CORR FAC	953	941	7	948	953	950
ARK VALLEY CORR FAC	1,007	1,000	10	1,010	1,007	1,003
BUENA VISTA CORR FAC	926	858	17	875	926	919
BUENA VISTA MIN CTR	292	287	4	291	292	287
COLO TERR CORR FAC	944	938	19	957	944	927
FORT LYON CORR FAC	500	492	6	498	500	493
FREMONT CORR FAC	1,661	1,635	19	1,654	1,661	1,648
LA VISTA CORR FAC	519	419	4	423	519	511
ARROWHEAD CORR CTR	494	489	5	494	494	490
FOUR MILE CORR CTR	499	495	5	500	499	496
TRINIDAD CORR FAC	484	481	7	488	484	475
S.T.U. at Y.O.S.	30	14	0	14	30	8
SKYLINE CORR CTR	249	248	1	249	249	248
COLORADO CORR CTR	150	148	1	149	150	144
DELTA CORR CTR	484	471	3	474	484	465
RIFLE CORR CTR	192	191	0	191	192	188
COLO CORR ALT PROGRAM	100	53	9	62	100	65
COLO WOMEN'S CORR FAC	0	0	0	0	0	0
DENVER WOMEN'S CORR FAC	976	878	13	891	909	890
DENVER REC DIAG CTR	480	502	14	516	480	428
SAN CARLOS CORR FAC	255	245	4	249	255	242
SUBTOTAL	14,832	14,364	179	14,543	14,765	14,457
CONTRACTS:						
BENT COUNTY CORR CTR		1,438	18	1,456		1,408
HUERFANO COUNTY CORR CTR		0	0	0		0
CROWLEY COUNTY CORR FAC		1,662	19	1,681		11,641
KIT CARSON COUNTY CORR FAC		1,015	10	1,025		1,259
CHEYENNE MTN REENTRY CTR		687	8	695		671
HIGH PLAINS CORR FAC		214	5	219		275
OFF-GROUNDS POPULATION:			239			238
ESCAPEES/WALKAWAYS				233		210
REVOCATIONS-JAIL				0		0
JAIL BACKLOG:						
BACKLOG LESS THAN 72 HOURS			60		65	
BACKLOG GREATER THAN 72 HOURS (FISCAL YTD AVE =81)			66		37	
BACKLOG-PAROLEES AWAITING TRANSFER			78		51	
TOTAL JAIL BACKLOG			204			153
COUNTY JAIL CONTRACTS			18			30
COMMUNITY CORRECTIONS						
COMMUNITY						
RESIDENTIAL		1,563		1,563	1,593	1,593
NON-RESIDENTIAL			90	90	92	92
PAROLE REVOCATIONS				0	0	0
REVOKED-RET TO CUST		228	80	308	263	263
REGRESSIONS			63	63	60	60
TOTAL COMMUNITY		1,791	233	2,024	2,008	2,008
ISP						
RESIDENTIAL		725		725	769	769
NON-RESIDENTIAL			36	36	41	41
REGRESSIONS			8	8	19	19
TOTAL ISP		725	44	769	829	829
TOTAL COMM. CORRECTIONS		2,516	277	2,793	2,837	2,837
MALE POPULATION				20,764		20,891
FEMALE POPULATION				2,103		2,288
TOTAL INMATE JURISDICTIONAL POPULATION				22,867		23,179

*OPERATIONAL CAPACITY INCLUDES ALL BEDS AVAILABLE FOR USE, INCLUDING MANAGEMENT CONTROL UNITS, BUT EXCLUDES EMERGENCY DOUBLE BUNKING.

COLORADO DEPARTMENT OF CORRECTIONS
ADULT INMATE JURISDICTIONAL POPULATION (1)

DATE: 5/5/2010

DATE	MALE POPULATION			FEMALE POPULATION			TOTAL POPULATION		
	Male Population	Net Change	Fiscal Y-T-D Average	Female Population	Net Change	Fiscal Y-T-D Average	Total Population	Net Change	Fiscal Y-T-D Average
04-30-10	20,764	81		2,103	9		22,867	90	
03-31-10	20,683	83		2,094	-20		22,777	63	
02-28-10	20,600	48		2,114	-8		22,714	40	
01-31-10	20,552	29		2,122	-16		22,674	13	
12-31-09	20,523	-22		2,138	-13		22,661	-35	
11-30-09	20,545	-176	-24	2,151	-50	-22	22,696	-226	-45
10-31-09	20,721	-179		2,201	-21		22,922	-200	
09-30-09	20,900	-13		2,222	-43		23,122	-56	
08-31-09	20,913	-15		2,265	-27		23,178	-42	
07-31-09	20,928	32		2,292	2		23,220	34	
06-30-09	20,896	51		2,290	18		23,186	69	
05-31-09	20,845	-46		2,272	-16		23,117	-62	
04-30-09	20,891	41		2,288	-14		23,179	27	
03-31-09	20,850	36		2,302	17		23,152	53	
02-28-09	20,814	-16		2,285	-32		23,099	-48	
01-31-09	20,830	1		2,317	2		23,147	3	
12-31-08	20,829	-32	16	2,315	-8	-1	23,144	-40	15
11-30-08	20,861	41		2,323	-17		23,184	24	
10-31-08	20,820	85		2,340	9		23,160	94	
09-30-08	20,735	-33		2,331	27		23,066	-6	
08-31-08	20,768	87		2,304	-10		23,072	77	
07-31-08	20,681	-3		2,314	9		22,995	6	
06-30-08	20,684	-48		2,305	-12		22,989	-60	
05-31-08	20,732	29		2,317	-27		23,049	2	
04-30-08	20,703	65		2,344	-11		23,047	54	
03-31-08	20,638	112		2,355	19		22,993	131	
02-29-08	20,526	51		2,336	-3		22,862	48	
01-31-08	20,475	98		2,339	-19		22,814	79	
12-31-07	20,377	-60	42	2,358	-1	-3	22,735	-61	39
11-30-07	20,437	94		2,359	29		22,796	123	
10-31-07	20,343	85		2,330	2		22,673	87	
09-30-07	20,258	-4		2,328	6		22,586	2	
08-31-07	20,262	107		2,322	-14		22,584	93	
07-31-07	20,155	-23		2,336	-5		22,491	-28	
06-30-07	20,178		32	2,341		10	22,519		42
06-30-06	19,792		97	2,220		12	22,012		109
06-30-05	18,631		68	2,073		27	20,704		95
06-30-04	17,814		49	1,755		11	19,569		60
06-30-03	17,226		57	1,620		10	18,846		67
06-30-02	16,539		87	1,506		14	18,045		101
06-30-01	15,493		63	1,340		6	16,833		70
06-30-00	14,733		99	1,266		7	15,999		106
06-30-99	13,547		75	1,179		14	14,726		89
06-30-98	12,647			1,016			13,663		

(1) Adult inmate jurisdictional population includes on-grounds, off-grounds, out-of-state, escapees, and jail backlog and excludes offenders sentenced to the Youthful Offender System (YOS).

COLORADO DEPARTMENT OF CORRECTIONS
ADULT INMATE RELEASES FROM PRISON
TOTAL Population (Male and Female)

5/5/2010

	Parole*							Discharge				Other				Total
	Discretionary	Mandatory	Wknd. Mand.	Mand. Repar.	Wknd. Mand. Repar.	HB 1351 Early	Accel Trans	Sentence	H.B. 1087	Martin/Cooper	Chgs/Det.	Probation	Ct. Ord. Dsch.	Appeal Bond	Deceased	
Apr-10	213	150	126	98	85	26	2	38	65	5	15	11	9	0	3	846
Mar-10	238	147	107	152	74	50	11	38	61	3	12	7	7	0	7	914
Feb-10	197	114	124	114	83	44	3	32	61	5	10	11	7	1	0	806
Jan-10	251	115	98	121	93	27	22	35	74	2	15	13	8	0	5	879
Dec-09	260	119	121	133	109	46	32	25	52	2	19	12	7	0	8	945
Nov-09	264	141	131	103	88	36	64	31	70	5	8	14	5	1	3	964
Oct-09	277	158	124	91	90	38	122	42	56	1	11	6	10	0	6	1,032
Sep-09	250	151	143	90	107	58	28	34	60	5	13	12	7	0	3	961
Aug-09	244	139	119	116	63	83	N/A	40	59	3	19	9	7	0	3	904
Jul-09	229	171	142	119	88	33	N/A	33	68	4	8	14	10	0	5	924
FY 2010-Avg.	242	141	124	114	88	44	N/A	35	63	4	13	11	8	0	4	918
FY 2009-Avg.	343	188	N/A	93	N/A	N/A	N/A	34	63	5	17	12	10	0	4	898
FY 2008-Avg.	466	186	N/A	88	N/A	N/A	N/A	34	56	8	17	12	11	0	4	881
FY 2007-Avg.	422	198	N/A	89	N/A	N/A	N/A	31	50	10	16	13	9	0	4	843
FY 2006-Avg.	234	266	N/A	98	N/A	N/A	N/A	38	50	13	15	16	10	0	5	746

Definitions of Release Types

Discretionary parole-Released to parole through Parole Board discretion prior to mandatory release or sentence discharge date.

Mandatory parole-Released to parole on mandatory release date.

Wknd Mand.-Mandatory releases scheduled to release on a weekend; released a few days early under Parole Board authority.

Mand. Repar-Reparoled on specific date set by Parole Board (includes S.B. 252 reparoles). n/a - breakout not available prior to June 2004.

Wknd Mand. Repar.-Mandatory Reparole releases scheduled to release on a weekend; released a few days early under Parole Board authority.

HB 1351 Early - Released to parole, subject to earn time provisions of H.B. 09-1351.

Accel Trans - Accelerated Transition released to parole prior to mandatory release by parole board based on program eligibility criteria.

Sentence discharge-Completion of sentence with no further supervision.

H.B. 1087 discharge-Completion of sentence with no further supervision, subject to earn time provisions of H.B. 95-1087.

Martin/ Cooper discharge-Completion of sentence with no further supervision, sex offender subject to Martin/Cooper Supreme Court decision.

Chgs/ Det. discharge-Completion of sentence, released to other law enforcement for pending charges or detainees.

Probation-Released by court to probation.

Ct. Ord. Dsch.-Released by court order.

Appeal Bond-Released by court to appeal bond.

Deceased-Offender death in prison.

***Due to the decrease in community transportation services, the Department implemented a procedural change in December 2005 with regards to releasing inmates on weekends. As a result, discretionary releases increased and mandatory releases decreased. However, beginning December 2008, the implementation of a new electronic coding system enabled these releases to be correctly classified as weekend mandatory parole and mandatory reparole releases.**

COLORADO DEPARTMENT OF CORRECTIONS
ADULT INMATE RELEASES FROM PRISON

5/5/2010

Male Population Only

	Parole*							Discharge				Other				Total
	Discre- tionary	Mand- atory	Wknd. Mand.	Mand. Repar.	Wknd. Mand. Repar.	HB 1351 Early	Accel Trans	Sentence	H.B. 1087	Martin/ Cooper	Chgs/ Det.	Probation	Ct. Ord. Dsch.	Appeal Bond	Deceased	
Apr-10	176	140	108	87	79	24	2	35	60	5	15	9	8	0	3	751
Mar-10	191	138	94	131	63	45	9	35	53	3	12	6	6	0	6	792
Feb-10	168	102	109	101	74	40	2	30	55	5	10	9	5	0	0	710
Jan-10	209	107	83	107	79	23	18	33	70	2	14	13	6	0	5	769
Dec-09	215	110	110	112	99	35	28	24	47	2	19	11	5	0	7	824
Nov-09	230	120	119	88	77	31	44	30	61	5	6	14	5	1	3	834
Oct-09	232	145	115	84	77	28	107	40	48	1	11	6	10	0	6	910
Sep-09	200	133	129	82	91	48	15	29	55	5	12	10	7	0	3	819
Aug-09	204	124	104	104	55	68	N/A	37	51	2	19	7	7	0	3	785
Jul-09	184	153	127	105	77	23	N/A	32	59	4	8	14	8	0	5	799
FY 2010-Avg.	201	127	110	100	77	37	N/A	33	56	3	13	10	7	0	4	799
FY 2009-Avg.	294	167	N/A	80	N/A	N/A	N/A	31	56	5	15	10	9	0	4	786
FY 2008-Avg.	397	162	N/A	76	N/A	N/A	N/A	32	48	8	16	10	9	0	4	762
FY 2007-Avg.	359	175	N/A	77	N/A	N/A	N/A	29	45	9	15	11	8	0	4	733
FY 2006-Avg.	196	233	N/A	84	N/A	N/A	N/A	35	46	13	14	15	9	0	5	648

Female Population Only

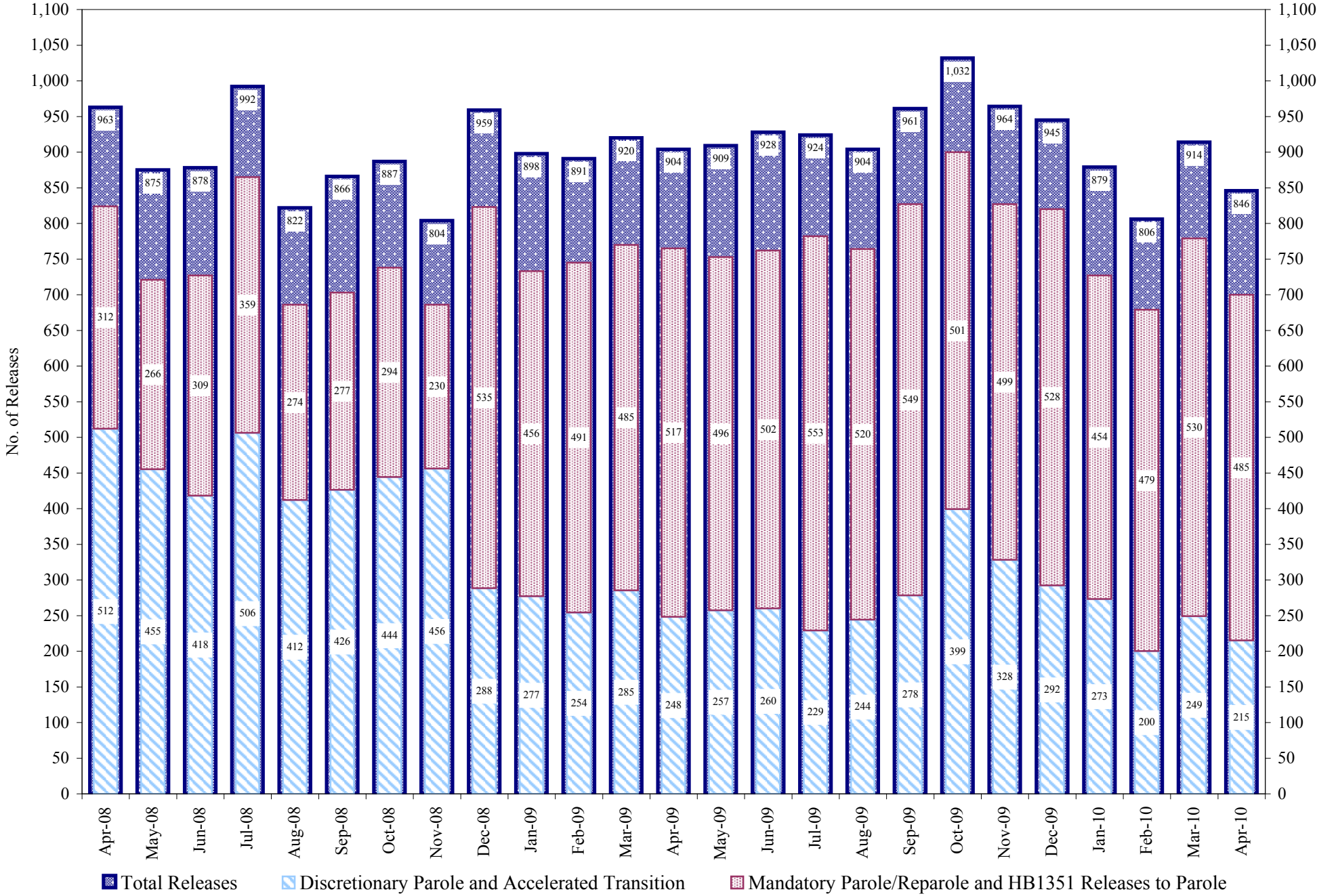
	Parole*							Discharge				Other				Total
	Discre- tionary	Mand- atory	Wknd. Mand.	Mand. Repar.	Wknd. Mand. Repar.	HB 1351 Early	Accel Trans	Sentence	H.B. 1087	Martin/ Cooper	Chgs/ Det.	Probation	Ct. Ord. Dsch.	Appeal Bond	Deceased	
Apr-10	37	10	18	11	6	2	0	3	5	0	0	2	1	0	0	95
Mar-10	47	9	13	21	11	5	2	3	8	0	0	1	1	0	1	122
Feb-10	29	12	15	13	9	4	1	2	6	0	0	2	2	1	0	96
Jan-10	42	8	15	14	14	4	4	2	4	0	1	0	2	0	0	110
Dec-09	45	9	11	21	10	11	4	1	5	0	0	1	2	0	1	121
Nov-09	34	21	12	15	11	5	20	1	9	0	2	0	0	0	0	130
Oct-09	45	13	9	7	13	10	15	2	8	0	0	0	0	0	0	122
Sep-09	50	18	14	8	16	10	13	5	5	0	1	2	0	0	0	142
Aug-09	40	15	15	12	8	15	N/A	3	8	1	0	2	0	0	0	119
Jul-09	45	18	15	14	11	10	N/A	1	9	0	0	0	2	0	0	125
FY 2010-Avg.	41	13	14	14	11	8	N/A	2	7	0	0	1	1	0	0	118
FY 2009-Avg.	49	21	N/A	13	N/A	N/A	N/A	3	7	0	2	2	1	0	0	112
FY 2008-Avg.	69	23	N/A	12	N/A	N/A	N/A	2	7	0	2	2	2	0	0	119
FY 2007-Avg.	63	23	N/A	11	N/A	N/A	N/A	2	6	0	1	2	1	0	0	109
FY 2006-Avg.	39	34	N/A	14	N/A	N/A	N/A	3	5	0	1	2	1	0	0	98

Definitions of Release Types

See previous page.

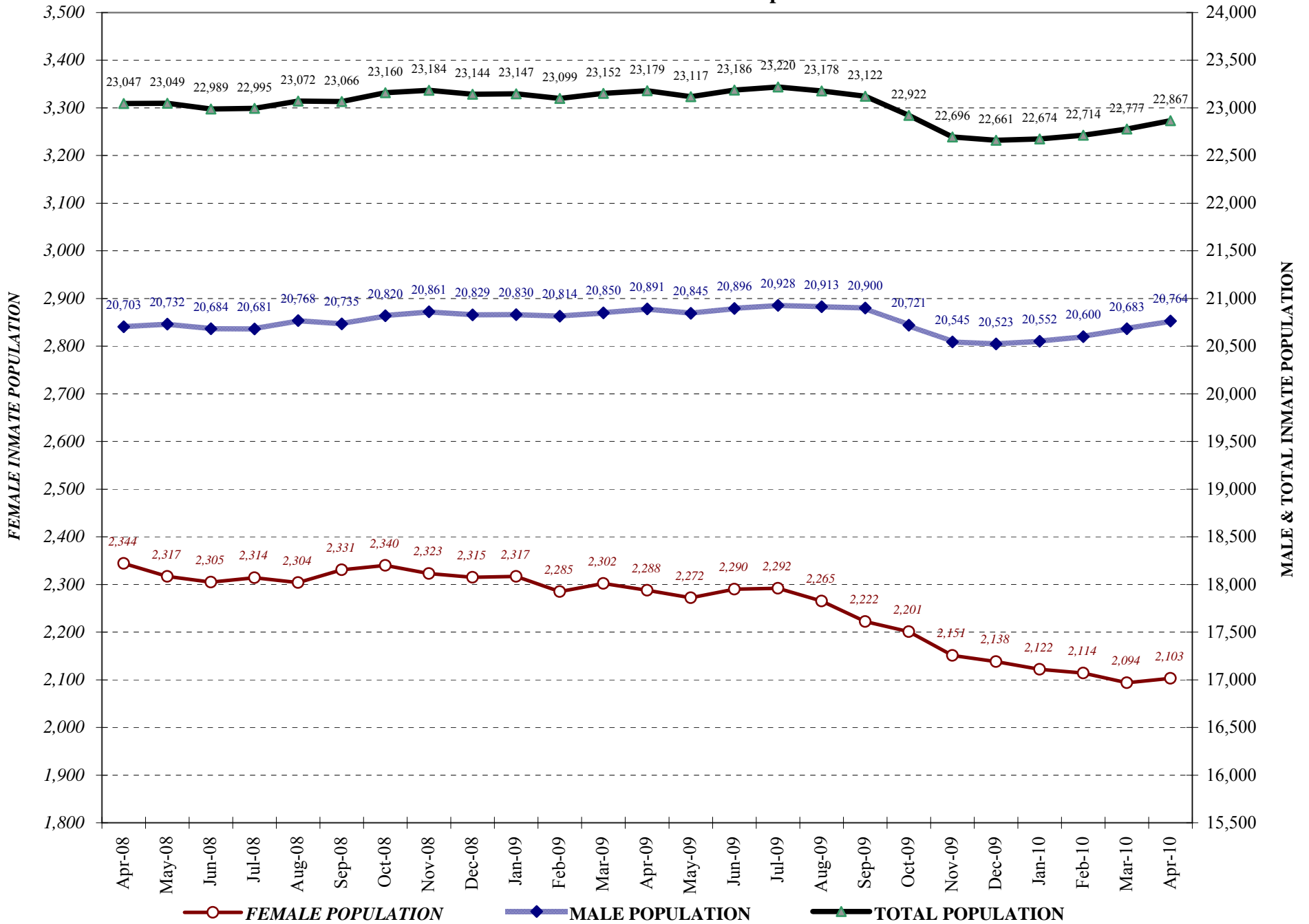
COLORADO DEPARTMENT OF CORRECTIONS

Adult Prison Releases

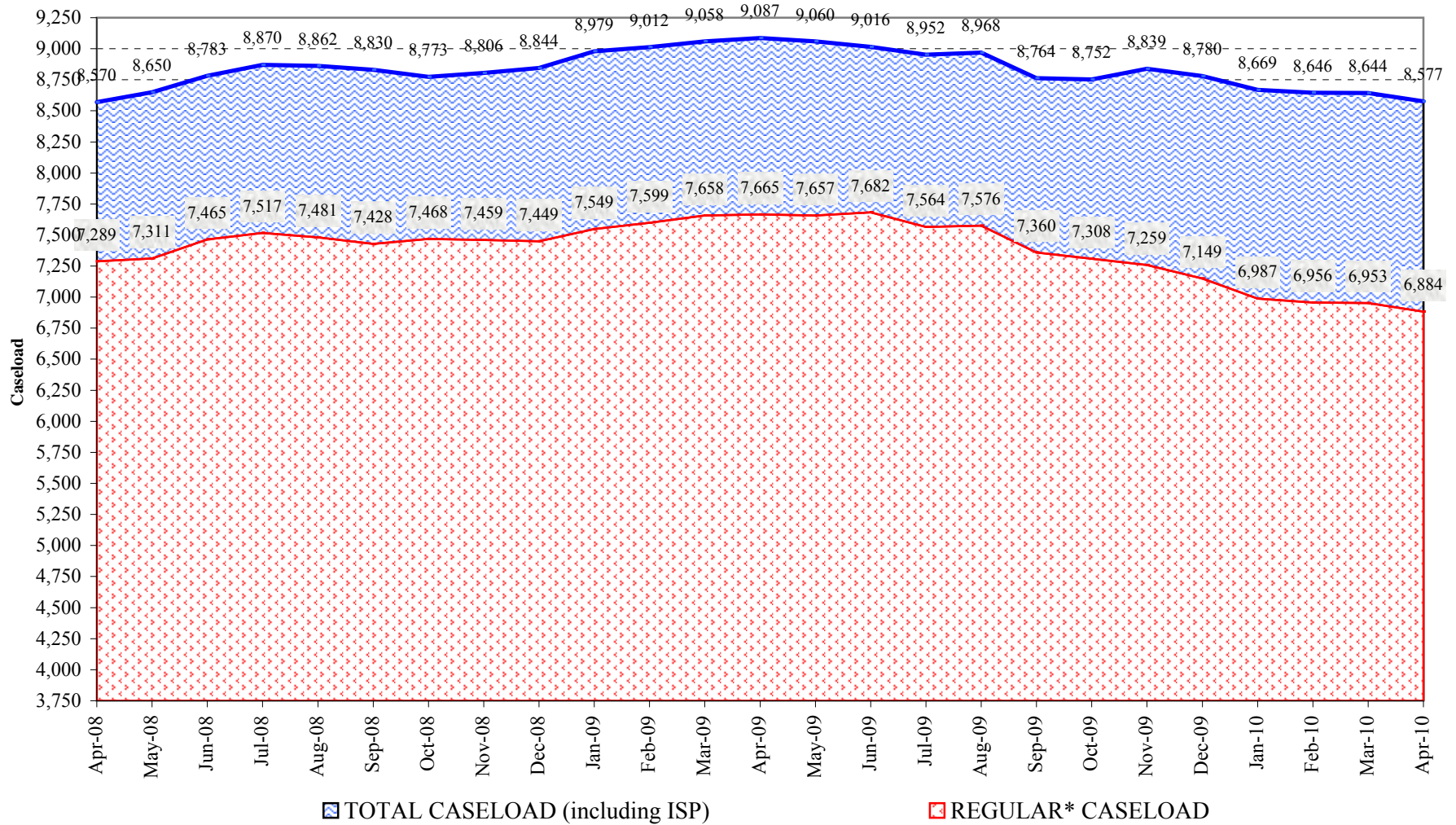


Total releases include releases to discretionary parole and accelerated transition, mandatory parole/reparole and HB1351, all types of discharges and other releases as detailed on the previous two pages.

COLORADO DEPARTMENT OF CORRECTIONS Adult Jurisdictional Inmate Population



COLORADO DEPARTMENT OF CORRECTIONS Parole Population



* Regular caseload includes interstate parole, but excludes out-of-state parolees and absconders.