

**COLORADO DEPARTMENT OF CORRECTIONS
MONTHLY POPULATION AND CAPACITY REPORT**

as of January 31, 2010

	1/31/2010	1/31/10			3-Feb-10	
	OPERATIONAL CAPACITY*	ON-GRDS POPULATION	OFF-GRDS POPULATION	TOTAL POPULATION	OPERATIONAL CAPACITY*	ON-GRDS POPULATION
COLO STATE PENITENTIARY	756	748	2	750	756	758
CENTENNIAL CORR FAC	336	306	0	306	336	306
STERLING CORR FAC	2,545	2,489	17	2,506	2,545	2,540
LIMON CORR FAC	953	937	11	948	953	956
ARK VALLEY CORR FAC	1,007	1,000	12	1,012	1,007	1,011
BUENA VISTA CORR FAC	926	853	19	872	926	947
BUENA VISTA MIN CTR	292	285	5	290	292	291
COLO TERR CORR FAC	944	904	16	920	936	939
FORT LYON CORR FAC	500	480	6	486	500	496
FREMONT CORR FAC	1,661	1,637	19	1,656	1,660	1,654
LA VISTA CORR FAC	519	431	6	437	519	449
ARROWHEAD CORR CTR	494	492	0	492	494	496
FOUR MILE CORR CTR	499	495	7	502	499	498
TRINIDAD CORR FAC	484	478	4	482	484	485
S.T.U. at Y.O.S.	30	25	0	25	30	29
SKYLINE CORR CTR	249	246	0	246	249	246
COLORADO CORR CTR	150	144	1	145	150	150
DELTA CORR CTR	484	443	5	448	484	468
RIFLE CORR CTR	192	178	1	179	192	187
COLO CORR ALT PROGRAM	100	81	6	87	100	67
COLO WOMEN'S CORR FAC	0	0	0	0	224	214
DENVER WOMEN'S CORR FAC	976	868	8	876	866	780
DENVER REC DIAG CTR	480	499	16	515	480	491
SAN CARLOS CORR FAC	255	244	5	249	255	252
SUBTOTAL	14,832	14,263	166	14,429	14,946	14,710
CONTRACTS:						
BENT COUNTY CORR CTR		1,285	26	1,311		950
HUERFANO COUNTY CORR CTR		0	0	0		703
CROWLEY COUNTY CORR FAC		1,610	27	1,637		1,662
KIT CARSON COUNTY CORR FAC		1,210	6	1,216		1,060
CHEYENNE MTN REENTRY CTR		623	4	627		646
HIGH PLAINS CORR FAC		203	6	209		256
OFF-GROUNDS POPULATION:						
ESCAPEES/WALKAWAYS			235	230		257
REVOICATIONS-JAIL				0		0
JAIL BACKLOG:						
BACKLOG LESS THAN 72 HOURS			26		0	
BACKLOG GREATER THAN 72 HOURS (FISCAL YTD AVE =72)			73		106	
BACKLOG-PAROLEES AWAITING TRANSFER			92		21	
TOTAL JAIL BACKLOG			191			127
COUNTY JAIL CONTRACTS			15			19
COMMUNITY CORRECTIONS						
COMMUNITY						
RESIDENTIAL		1,557		1,557	1,556	1,556
NON-RESIDENTIAL			147	147	86	86
PAROLE REVOCATIONS				0	0	0
REVOKED-RET TO CUST		235	50	285	250	250
REGRESSIONS			41	41	41	41
TOTAL COMMUNITY		1,792	238	2,030	1,933	1,933
ISP						
RESIDENTIAL		730		730	798	798
NON-RESIDENTIAL			43	43	46	46
REGRESSIONS			6	6	12	12
TOTAL ISP		730	49	779	856	856
TOTAL COMM. CORRECTIONS		2,522	287	2,809	2,789	2,789
MALE POPULATION				20,552		20,830
FEMALE POPULATION				2,122		2,317
TOTAL INMATE JURISDICTIONAL POPULATION				22,674		23,147

*OPERATIONAL CAPACITY INCLUDES ALL BEDS AVAILABLE FOR USE, INCLUDING MANAGEMENT CONTROL UNITS, BUT EXCLUDES EMERGENCY DOUBLE BUNKING.

COLORADO DEPARTMENT OF CORRECTIONS
MONTHLY POPULATION AND CAPACITY REPORT
as of January 31, 2010

3-Feb-10

CURRENT MONTH CHANGES IN CAPACITY:

NET MONTHLY GROWTH RATE:

CURRENT MONTH	13
FISCAL YEAR-TO-DATE AVERAGE	-73

YOUTHFUL OFFENDER SYSTEM

	----- 01/31/10 -----			1/31/09
	PUEBLO	COMM. CORR.	TOTAL POPULATION	TOTAL POPULATION
INTAKE/IDO	10		10	8
RFP/REMEDATION	9		9	12
PHASE I	161		161	154
PHASE II	12		12	10
PHASE III		34	34	34
OFF GROUNDS/BACKLOG			10	4
TOTAL Y.O.S. POPULATION	192	34	236	227

	CURRENT MONTH	FISCAL YR. TO DATE
YOS ADMISSIONS	8	45
YOS RELEASES:		
COMPLETION OF SENTENCE	3	21
JUDICIAL RELEASE TO PROB/CT ORD DISCHG	0	0
JUDICIAL TRANSFER TO DOC	0	0
TERMINATION/FAILURE	1	5
DECEASED	0	0
TOTAL RELEASES	4	26

PAROLE CASELOAD

	----- 1/31/10 -----			----- 12/31/09 -----		----- 1/31/09 -----	
	DOMESTIC	INTERST PAR/PROB	TOTAL CASELOAD	DOMESTIC	TOTAL CASELOAD	DOMESTIC	TOTAL CASELOAD
DENVER REGION							
REGULAR	2,552	76	2,628	2,583	2,660	2,726	2,809
ISP	758		758	734	734	645	645
SUBTOTAL	3,310	76	3,386	3,317	3,394	3,371	3,454
NORTHEAST REGION							
REGULAR	1,769	103	1,872	1,856	1,958	1,907	2,005
ISP	452		452	454	454	358	358
SUBTOTAL	2,221	103	2,324	2,310	2,412	2,265	2,363
SOUTHEAST REGION							
REGULAR	1,761	81	1,842	1,777	1,862	1,858	1,935
ISP	342		342	305	305	310	310
SUBTOTAL	2,103	81	2,184	2,082	2,167	2,168	2,245
WESTERN REGION							
REGULAR	597	48	645	620	669	750	800
ISP	130		130	138	138	117	117
SUBTOTAL	727	48	775	758	807	867	917
TOTAL CASELOAD							
REGULAR	6,679	308	6,987	6,836	7,149	7,241	7,549
ISP	1,682		1,682	1,631	1,631	1,430	1,430
TOTAL	8,361	308	8,669	8,467	8,780	8,671	8,979
ADDITIONAL CASELOAD:							
OUT-OF-STATE PAROLEES			2,114		2,150		1,919
PAROLEE ABSCONDBERS		735			725		804

COLORADO DEPARTMENT OF CORRECTIONS
ADULT INMATE JURISDICTIONAL POPULATION (1)

DATE: 2/3/2010

DATE	MALE POPULATION			FEMALE POPULATION			TOTAL POPULATION		
	Male Population	Net Change	Fiscal Y-T-D Average	Female Population	Net Change	Fiscal Y-T-D Average	Total Population	Net Change	Fiscal Y-T-D Average
01-31-10	20,552	29		2,122	-16		22,674	13	
12-31-09	20,523	-22		2,138	-13		22,661	-35	
11-30-09	20,545	-176		2,151	-50		22,696	-226	
10-31-09	20,721	-179	-49	2,201	-21	-24	22,922	-200	-73
09-30-09	20,900	-13		2,222	-43		23,122	-56	
08-31-09	20,913	-15		2,265	-27		23,178	-42	
07-31-09	20,928	32		2,292	2		23,220	34	
06-30-09	20,896	51		2,290	18		23,186	69	
05-31-09	20,845	-46		2,272	-16		23,117	-62	
04-30-09	20,891	41		2,288	-14		23,179	27	
03-31-09	20,850	36		2,302	17		23,152	53	
02-28-09	20,814	-16		2,285	-32		23,099	-48	
01-31-09	20,830	1		2,317	2		23,147	3	
12-31-08	20,829	-32	16	2,315	-8	-1	23,144	-40	15
11-30-08	20,861	41		2,323	-17		23,184	24	
10-31-08	20,820	85		2,340	9		23,160	94	
09-30-08	20,735	-33		2,331	27		23,066	-6	
08-31-08	20,768	87		2,304	-10		23,072	77	
07-31-08	20,681	-3		2,314	9		22,995	6	
06-30-08	20,684	-48		2,305	-12		22,989	-60	
05-31-08	20,732	29		2,317	-27		23,049	2	
04-30-08	20,703	65		2,344	-11		23,047	54	
03-31-08	20,638	112		2,355	19		22,993	131	
02-29-08	20,526	51		2,336	-3		22,862	48	
01-31-08	20,475	98		2,339	-19		22,814	79	
12-31-07	20,377	-60	42	2,358	-1	-3	22,735	-61	39
11-30-07	20,437	94		2,359	29		22,796	123	
10-31-07	20,343	85		2,330	2		22,673	87	
09-30-07	20,258	-4		2,328	6		22,586	2	
08-31-07	20,262	107		2,322	-14		22,584	93	
07-31-07	20,155	-23		2,336	-5		22,491	-28	
06-30-07	20,178		32	2,341		10	22,519		42
06-30-06	19,792		97	2,220		12	22,012		109
06-30-05	18,631		68	2,073		27	20,704		95
06-30-04	17,814		49	1,755		11	19,569		60
06-30-03	17,226		57	1,620		10	18,846		67
06-30-02	16,539		87	1,506		14	18,045		101
06-30-01	15,493		63	1,340		6	16,833		70
06-30-00	14,733		99	1,266		7	15,999		106
06-30-99	13,547		75	1,179		14	14,726		89
06-30-98	12,647			1,016			13,663		

(1) Adult inmate jurisdictional population includes on-grounds, off-grounds, out-of-state, escapees, and jail backlog and excludes offenders sentenced to the Youthful Offender System (YOS).

COLORADO DEPARTMENT OF CORRECTIONS
ADULT INMATE RELEASES FROM PRISON
TOTAL Population (Male and Female)

2/3/2010

	Parole*							Discharge				Other				Total
	Discretionary	Mandatory	Wknd. Mand.	Mand. Repar.	Wknd. Mand. Repar.	HB 1351 Early	Accel Trans	Sentence	H.B. 1087	Martin/Cooper	Chgs/Det.	Probation	Ct. Ord. Dsch.	Appeal Bond	Deceased	
Jan-10	251	115	98	121	93	27	22	35	74	2	15	13	8	0	5	879
Dec-09	260	119	121	133	109	46	32	25	52	2	19	12	7	0	8	945
Nov-09	264	141	131	103	88	36	64	31	70	5	8	14	5	1	3	964
Oct-09	277	158	124	91	90	38	122	42	56	1	11	6	10	0	6	1,032
Sep-09	250	151	143	90	107	58	28	34	60	5	13	12	7	0	3	961
Aug-09	244	139	119	116	63	83	N/A	40	59	3	19	9	7	0	3	904
Jul-09	229	171	142	119	88	33	N/A	33	68	4	8	14	10	0	5	924
FY 2010-Avg.	254	142	125	110	91	46	N/A	34	63	3	13	11	8	0	5	944
FY 2009-Avg.	343	188	N/A	93	N/A	N/A	N/A	34	63	5	17	12	10	0	4	898
FY 2008-Avg.	466	186	N/A	88	N/A	N/A	N/A	34	56	8	17	12	11	0	4	881
FY 2007-Avg.	422	198	N/A	89	N/A	N/A	N/A	31	50	10	16	13	9	0	4	843
FY 2006-Avg.	234	266	N/A	98	N/A	N/A	N/A	38	50	13	15	16	10	0	5	746

Definitions of Release Types

Discretionary parole-Released to parole through Parole Board discretion prior to mandatory release or sentence discharge date.

Mandatory parole-Released to parole on mandatory release date.

Wknd Mand.-Mandatory releases scheduled to release on a weekend; released a few days early under Parole Board authority.

Mand. Repar.-Reparoled on specific date set by Parole Board (includes S.B. 252 reparaoles). n/a - breakout not available prior to June 2004.

Wknd Mand. Repar.-Mandatory Reparole releases scheduled to release on a weekend; released a few days early under Parole Board authority.

HB 1351 Early - Released to parole, subject to earn time provisions of H.B. 09-1351.

Accel Trans - Accelerated Transition released to parole prior to mandatory release by parole board based on program eligibility criteria.

Sentence discharge-Completion of sentence with no further supervision.

H.B. 1087 discharge-Completion of sentence with no further supervision, subject to earn time provisions of H.B. 95-1087.

Martin/ Cooper discharge-Completion of sentence with no further supervision, sex offender subject to Martin/Cooper Supreme Court decision.

Chgs/ Det. discharge-Completion of sentence, released to other law enforcement for pending charges or detainees.

Probation-Released by court to probation.

Ct. Ord. Dsch.-Released by court order.

Appeal Bond-Released by court to appeal bond.

Deceased-Offender death in prison.

***Due to the decrease in community transportation services, the Department implemented a procedural change in December 2005 with regards to releasing inmates on weekends. As a result, discretionary releases increased and mandatory releases decreased. However, beginning December 2008, the implementation of a new electronic coding system enabled these releases to be correctly classified as weekend mandatory parole and mandatory reparole releases.**

COLORADO DEPARTMENT OF CORRECTIONS
ADULT INMATE RELEASES FROM PRISON

2/3/2010

Male Population Only

	Parole*							Discharge				Other				Total
	Discre- tionary	Mand- atory	Wknd. Mand.	Mand. Repar.	Wknd. Mand. Repar.	HB 1351 Early	Accel Trans	Sentence	H.B. 1087	Martin/ Cooper	Chgs/ Det.	Probation	Ct. Ord. Dsch.	Appeal Bond	Deceased	
Jan-10	209	107	83	107	79	23	18	33	70	2	14	13	6	0	5	769
Dec-09	215	110	110	112	99	35	28	24	47	2	19	11	5	0	7	824
Nov-09	230	120	119	88	77	31	44	30	61	5	6	14	5	1	3	834
Oct-09	232	145	115	84	77	28	107	40	48	1	11	6	10	0	6	910
Sep-09	200	133	129	82	91	48	15	29	55	5	12	10	7	0	3	819
Aug-09	204	124	104	104	55	68	N/A	37	51	2	19	7	7	0	3	785
Jul-09	184	153	127	105	77	23	N/A	32	59	4	8	14	8	0	5	799
FY 2010-Avg.	211	127	112	97	79	37	N/A	32	56	3	13	11	7	0	5	820
FY 2009-Avg.	294	167	N/A	80	N/A	N/A	N/A	31	56	5	15	10	9	0	4	786
FY 2008-Avg.	397	162	N/A	76	N/A	N/A	N/A	32	48	8	16	10	9	0	4	762
FY 2007-Avg.	359	175	N/A	77	N/A	N/A	N/A	29	45	9	15	11	8	0	4	733
FY 2006-Avg.	196	233	N/A	84	N/A	N/A	N/A	35	46	13	14	15	9	0	5	648

Female Population Only

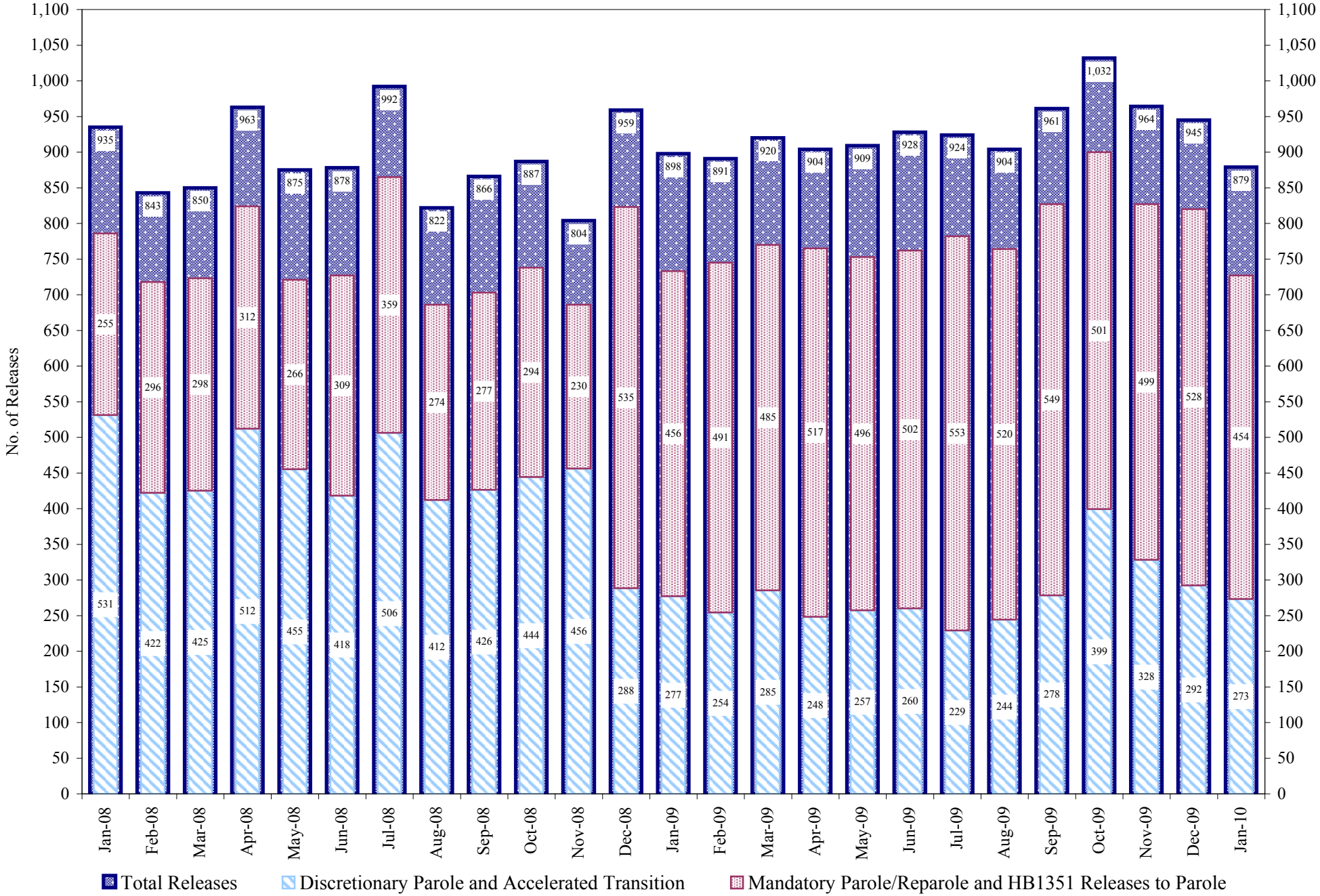
	Parole*							Discharge				Other				Total
	Discre- tionary	Mand- atory	Wknd. Mand.	Mand. Repar.	Wknd. Mand. Repar.	HB 1351 Early	Accel Trans	Sentence	H.B. 1087	Martin/ Cooper	Chgs/ Det.	Probation	Ct. Ord. Dsch.	Appeal Bond	Deceased	
Jan-10	42	8	15	14	14	4	4	2	4	0	1	0	2	0	0	110
Dec-09	45	9	11	21	10	11	4	1	5	0	0	1	2	0	1	121
Nov-09	34	21	12	15	11	5	20	1	9	0	2	0	0	0	0	130
Oct-09	45	13	9	7	13	10	15	2	8	0	0	0	0	0	0	122
Sep-09	50	18	14	8	16	10	13	5	5	0	1	2	0	0	0	142
Aug-09	40	15	15	12	8	15	N/A	3	8	1	0	2	0	0	0	119
Jul-09	45	18	15	14	11	10	N/A	1	9	0	0	0	2	0	0	125
FY 2010-Avg.	43	15	13	13	12	9	N/A	2	7	0	1	1	1	0	0	124
FY 2009-Avg.	49	21	N/A	13	N/A	N/A	N/A	3	7	0	2	2	1	0	0	112
FY 2008-Avg.	69	23	N/A	12	N/A	N/A	N/A	2	7	0	2	2	2	0	0	119
FY 2007-Avg.	63	23	N/A	11	N/A	N/A	N/A	2	6	0	1	2	1	0	0	109
FY 2006-Avg.	39	34	N/A	14	N/A	N/A	N/A	3	5	0	1	2	1	0	0	98

Definitions of Release Types

See previous page.

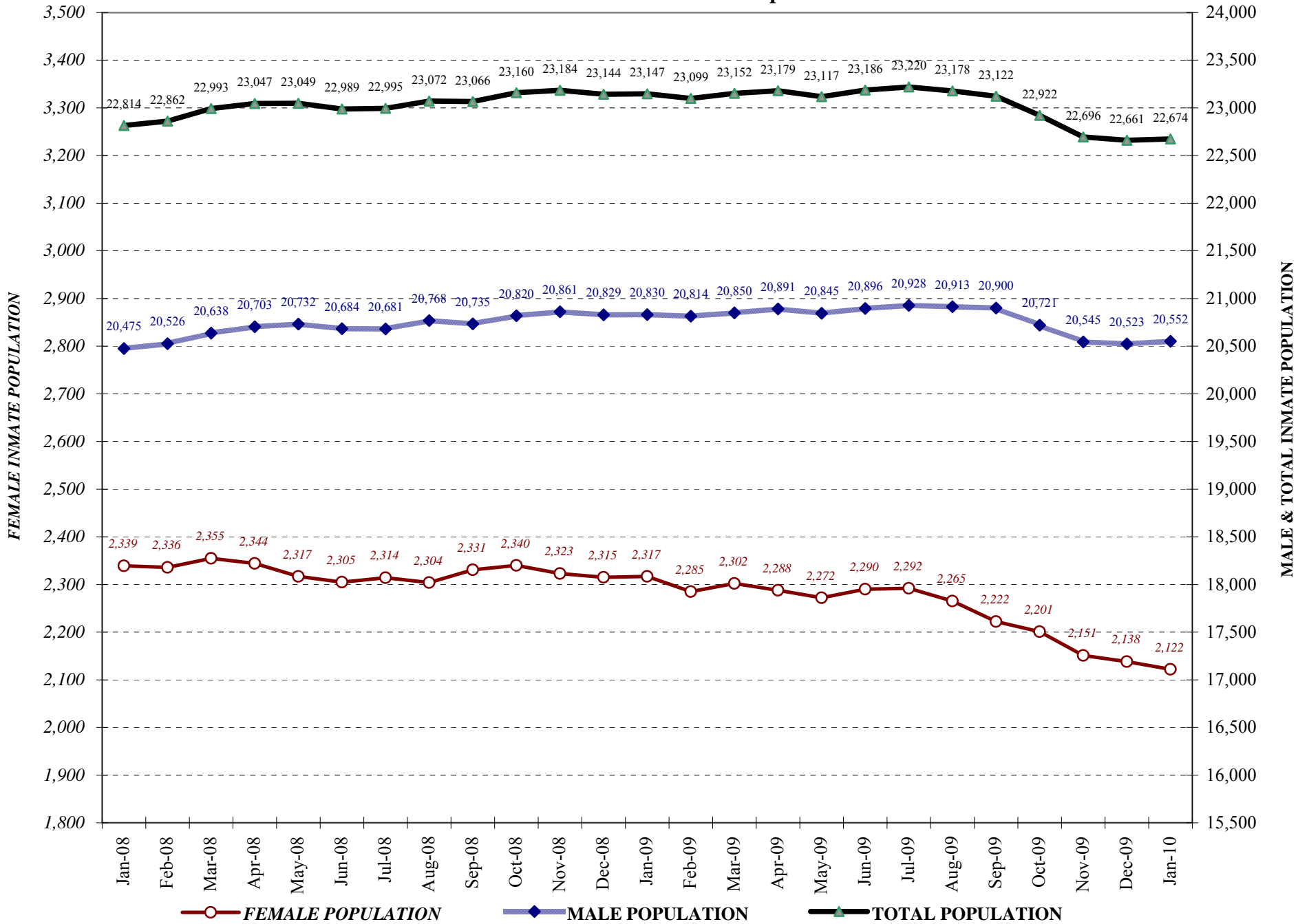
COLORADO DEPARTMENT OF CORRECTIONS

Adult Prison Releases

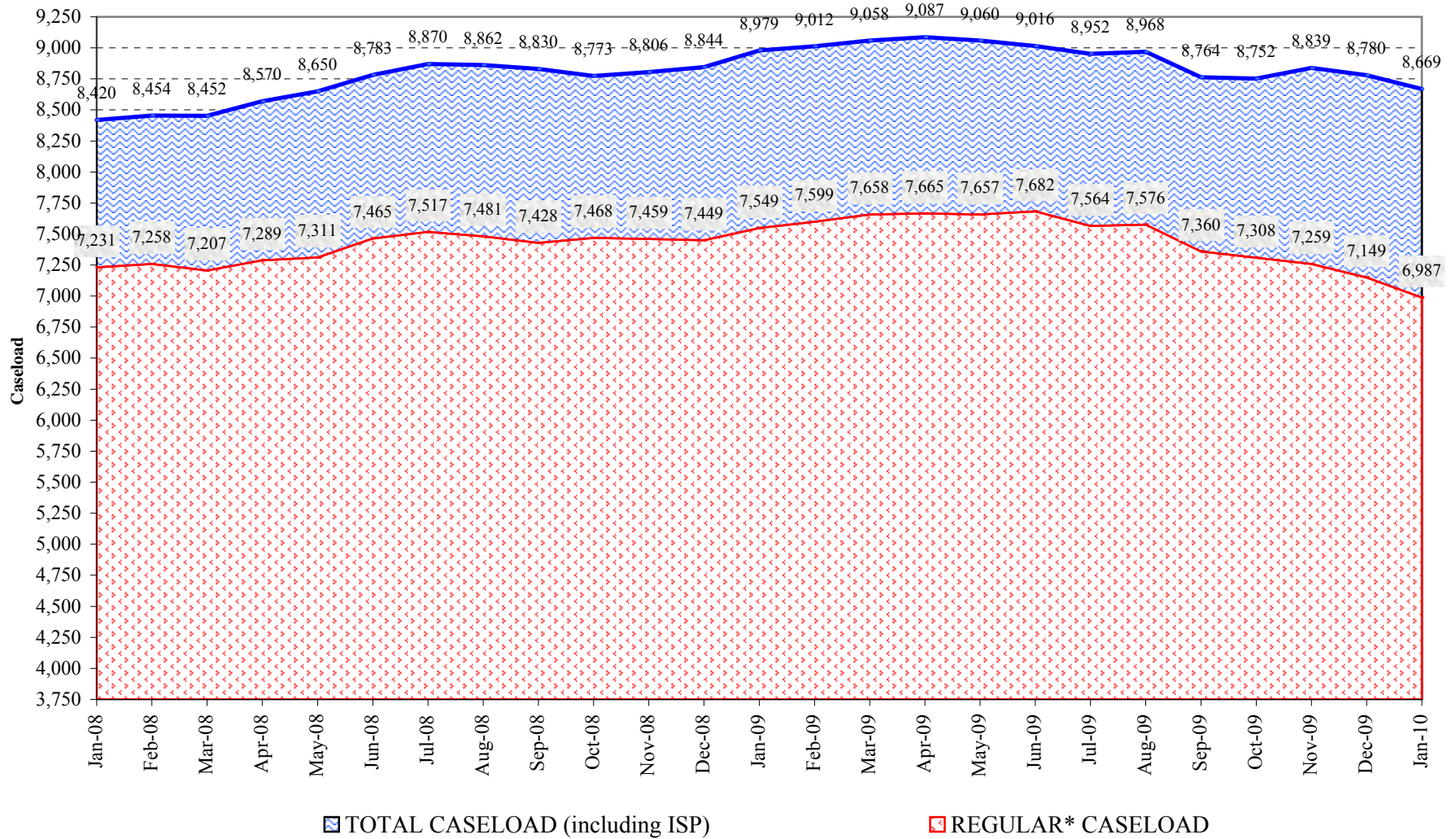


Total releases include releases to discretionary parole and accelerated transition, mandatory parole/reparole and HB1351, all types of discharges and other releases as detailed on the previous two pages.

COLORADO DEPARTMENT OF CORRECTIONS Adult Jurisdiction Inmate Population



COLORADO DEPARTMENT OF CORRECTIONS Parole Population



* Regular caseload includes interstate parole, but excludes out-of-state parolees and absconders.