

COLORADO DEPARTMENT OF CORRECTIONS
MONTHLY POPULATION AND CAPACITY REPORT
as of December 31, 2009

5-Jan-10

	12/31/2009	12/31/09			5-Jan-10	
	OPERATIONAL CAPACITY*	ON-GRDS POPULATION	OFF-GRDS POPULATION	TOTAL POPULATION	OPERATIONAL CAPACITY*	ON-GRDS POPULATION
COLO STATE PENITENTIARY	756	748	4	752	756	752
CENTENNIAL CORR FAC	336	306	1	307	336	321
STERLING CORR FAC	2,545	2,507	19	2,526	2,545	2,495
LIMON CORR FAC	953	941	3	944	953	949
ARK VALLEY CORR FAC	1,007	997	7	1,004	1,007	1,001
BUENA VISTA CORR FAC	926	854	15	869	926	905
BUENA VISTA MIN CTR	292	287	7	294	292	287
COLO TERR CORR FAC	944	890	16	906	944	937
FORT LYON CORR FAC	500	482	5	487	500	491
FREMONT CORR FAC	1,661	1,636	17	1,653	1,661	1,643
LA VISTA CORR FAC	519	466	2	468	519	459
ARROWHEAD CORR CTR	494	491	2	493	494	493
FOUR MILE CORR CTR	499	495	4	499	499	493
TRINIDAD CORR FAC	484	483	2	485	484	459
S.T.U. at Y.O.S.	30	21	0	21	30	28
SKYLINE CORR CTR	249	248	4	252	249	246
COLORADO CORR CTR	150	140	2	142	150	150
DELTA CORR CTR	484	456	2	458	484	477
RIFLE CORR CTR	192	189	1	190	192	192
COLO CORR ALT PROGRAM	100	69	7	76	100	58
COLO WOMEN'S CORR FAC	0	0	0	0	224	209
DENVER WOMEN'S CORR FAC	976	851	4	855	866	771
DENVER REC DIAG CTR	480	479	16	495	480	450
SAN CARLOS CORR FAC	255	247	3	250	255	244
SUBTOTAL	14,832	14,283	143	14,426	14,946	14,510
CONTRACTS:						
BENT COUNTY CORR CTR		1,301	20	1,321		917
HUERFANO COUNTY CORR CTR		0	0	0		723
CROWLEY COUNTY CORR FAC		1,608	26	1,634		1,641
KIT CARSON COUNTY CORR FAC		1,229	10	1,239		1,068
CHEYENNE MTN REENTRY CTR		607	4	611		667
HIGH PLAINS CORR FAC		212	6	218		259
OFF-GROUNDS POPULATION:						
ESCAPEES/WALKAWAYS			209	232		202
REVOCATIONS-JAIL				0		231
JAIL BACKLOG:						
BACKLOG LESS THAN 72 HOURS			22		0	
BACKLOG GREATER THAN 72 HOURS (FISCAL YTD AVE =67)			34		58	
BACKLOG-PAROLEES AWAITING TRANSFER			62		38	
TOTAL JAIL BACKLOG			118			96
COUNTY JAIL CONTRACTS			16			6
COMMUNITY CORRECTIONS						
COMMUNITY						
RESIDENTIAL		1,537		1,537	1,529	1,529
NON-RESIDENTIAL			136	136	78	78
PAROLE REVOCATIONS				0	0	0
REVOKED-RET TO CUST		210	79	289	274	274
REGRESSIONS			83	83	52	52
TOTAL COMMUNITY		1,747	298	2,045	1,933	1,933
ISP						
RESIDENTIAL		763		763	833	833
NON-RESIDENTIAL			36	36	56	56
REGRESSIONS			2	2	2	2
TOTAL ISP		763	38	801	891	891
TOTAL COMM. CORRECTIONS		2,510	336	2,846	2,824	2,824
MALE POPULATION				20,523		20,829
FEMALE POPULATION				2,138		2,315
TOTAL INMATE JURISDICTIONAL POPULATION				22,661		23,144

*OPERATIONAL CAPACITY INCLUDES ALL BEDS AVAILABLE FOR USE, INCLUDING MANAGEMENT CONTROL UNITS, BUT EXCLUDES EMERGENCY DOUBLE BUNKING.

COLORADO DEPARTMENT OF CORRECTIONS
MONTHLY POPULATION AND CAPACITY REPORT
as of December 31, 2009

5-Jan-10

CURRENT MONTH CHANGES IN CAPACITY:

NET MONTHLY GROWTH RATE:

CURRENT MONTH	-35
FISCAL YEAR-TO-DATE AVERAGE	-88

YOUTHFUL OFFENDER SYSTEM

	----- 12/31/09 -----			12/31/08
	PUEBLO	COMM. CORR.	TOTAL POPULATION	TOTAL POPULATION
INTAKE/IDO	9		9	8
RFP/REMEDICATION	10		10	18
PHASE I	160		160	142
PHASE II	9		9	14
PHASE III		32	32	42
OFF GROUNDS/BACKLOG			12	3
TOTAL Y.O.S. POPULATION	188	32	232	227

	CURRENT MONTH	FISCAL YR. TO DATE
YOS ADMISSIONS	10	37
YOS RELEASES:		
COMPLETION OF SENTENCE	5	18
JUDICIAL RELEASE TO PROB/CT ORD DISCHG	0	0
JUDICIAL TRANSFER TO DOC	0	0
TERMINATION/FAILURE	0	4
DECEASED	0	0
TOTAL RELEASES	5	22

PAROLE CASELOAD

	----- 12/31/09 -----			----- 11/30/09 -----		----- 12/31/08 -----	
	DOMESTIC	INTERST PAR/PROB	TOTAL CASELOAD	DOMESTIC	TOTAL CASELOAD	DOMESTIC	TOTAL CASELOAD
DENVER REGION							
REGULAR	2,583	77	2,660	2,635	2,714	2,693	2,775
ISP	734		734	712	712	643	643
SUBTOTAL	3,317	77	3,394	3,347	3,426	3,336	3,418
NORTHEAST REGION							
REGULAR	1,856	102	1,958	1,882	1,984	1,914	2,013
ISP	454		454	429	429	344	344
SUBTOTAL	2,310	102	2,412	2,311	2,413	2,258	2,357
SOUTHEAST REGION							
REGULAR	1,777	85	1,862	1,785	1,870	1,791	1,871
ISP	305		305	306	306	309	309
SUBTOTAL	2,082	85	2,167	2,091	2,176	2,100	2,180
WESTERN REGION							
REGULAR	620	49	669	644	691	744	790
ISP	138		138	133	133	99	99
SUBTOTAL	758	49	807	777	824	843	889
TOTAL CASELOAD							
REGULAR	6,836	313	7,149	6,946	7,259	7,142	7,449
ISP	1,631		1,631	1,580	1,580	1,395	1,395
TOTAL	8,467	313	8,780	8,526	8,839	8,537	8,844
ADDITIONAL CASELOAD:							
OUT-OF-STATE PAROLEES			2,150		2,124		1,943
PAROLEE ABSCONDERS		725			697		867

COLORADO DEPARTMENT OF CORRECTIONS
ADULT INMATE JURISDICTIONAL POPULATION (1)

DATE: 1/5/2010

DATE	MALE POPULATION			FEMALE POPULATION			TOTAL POPULATION		
	Male Population	Net Change	Fiscal Y-T-D Average	Female Population	Net Change	Fiscal Y-T-D Average	Total Population	Net Change	Fiscal Y-T-D Average
12-31-09	20,523	-22		2,138	-13		22,661	-35	
11-30-09	20,545	-176		2,151	-50		22,696	-226	
10-31-09	20,721	-179	-62	2,201	-21	-25	22,922	-200	-88
09-30-09	20,900	-13		2,222	-43		23,122	-56	
08-31-09	20,913	-15		2,265	-27		23,178	-42	
07-31-09	20,928	32		2,292	2		23,220	34	
06-30-09	20,896	51		2,290	18		23,186	69	
05-31-09	20,845	-46		2,272	-16		23,117	-62	
04-30-09	20,891	41		2,288	-14		23,179	27	
03-31-09	20,850	36		2,302	17		23,152	53	
02-28-09	20,814	-16		2,285	-32		23,099	-48	
01-31-09	20,830	1		2,317	2		23,147	3	
12-31-08	20,829	-32	16	2,315	-8	-1	23,144	-40	15
11-30-08	20,861	41		2,323	-17		23,184	24	
10-31-08	20,820	85		2,340	9		23,160	94	
09-30-08	20,735	-33		2,331	27		23,066	-6	
08-31-08	20,768	87		2,304	-10		23,072	77	
07-31-08	20,681	-3		2,314	9		22,995	6	
06-30-08	20,684	-48		2,305	-12		22,989	-60	
05-31-08	20,732	29		2,317	-27		23,049	2	
04-30-08	20,703	65		2,344	-11		23,047	54	
03-31-08	20,638	112		2,355	19		22,993	131	
02-29-08	20,526	51		2,336	-3		22,862	48	
01-31-08	20,475	98		2,339	-19		22,814	79	
12-31-07	20,377	-60	42	2,358	-1	-3	22,735	-61	39
11-30-07	20,437	94		2,359	29		22,796	123	
10-31-07	20,343	85		2,330	2		22,673	87	
09-30-07	20,258	-4		2,328	6		22,586	2	
08-31-07	20,262	107		2,322	-14		22,584	93	
07-31-07	20,155	-23		2,336	-5		22,491	-28	
06-30-07	20,178		32	2,341		10	22,519		42
06-30-06	19,792		97	2,220		12	22,012		109
06-30-05	18,631		68	2,073		27	20,704		95
06-30-04	17,814		49	1,755		11	19,569		60
06-30-03	17,226		57	1,620		10	18,846		67
06-30-02	16,539		87	1,506		14	18,045		101
06-30-01	15,493		63	1,340		6	16,833		70
06-30-00	14,733		99	1,266		7	15,999		106
06-30-99	13,547		75	1,179		14	14,726		89
06-30-98	12,647			1,016			13,663		

(1) Adult inmate jurisdictional population includes on-grounds, off-grounds, out-of-state, escapees, and jail backlog and excludes offenders sentenced to the Youthful Offender System (YOS).

COLORADO DEPARTMENT OF CORRECTIONS
ADULT INMATE RELEASES FROM PRISON
TOTAL Population (Male and Female)

1/5/2010

	Parole*							Discharge				Other				Total
	Discretionary	Mandatory	Wknd. Mand.	Mand. Repar.	Wknd. Mand. Repar.	HB 1351 Early	Accel Trans	Sentence	H.B. 1087	Martin/Cooper	Chgs/Det.	Probation	Ct. Ord. Dsch.	Appeal Bond	Deceased	
Dec-09	260	119	121	133	109	46	32	25	52	2	19	12	7	0	8	945
Nov-09	264	141	131	103	88	36	64	31	70	5	8	14	5	1	3	964
Oct-09	277	158	124	91	90	38	122	42	56	1	11	6	10	0	6	1,032
Sep-09	250	151	143	90	107	58	28	34	60	5	13	12	7	0	3	961
Aug-09	244	139	119	116	63	83	N/A	40	59	3	19	9	7	0	3	904
Jul-09	229	171	142	119	88	33	N/A	33	68	4	8	14	10	0	5	924
FY 2010-Avg.	254	147	130	109	91	49	N/A	34	61	3	13	11	8	0	5	955
FY 2009-Avg.	343	188	N/A	93	N/A	N/A	N/A	34	63	5	17	12	10	0	4	898
FY 2008-Avg.	466	186	N/A	88	N/A	N/A	N/A	34	56	8	17	12	11	0	4	881
FY 2007-Avg.	422	198	N/A	89	N/A	N/A	N/A	31	50	10	16	13	9	0	4	843
FY 2006-Avg.	234	266	N/A	98	N/A	N/A	N/A	38	50	13	15	16	10	0	5	746

Definitions of Release Types

Discretionary parole-Released to parole through Parole Board discretion prior to mandatory release or sentence discharge date.

Mandatory parole-Released to parole on mandatory release date.

Wknd Mand.-Mandatory releases scheduled to release on a weekend; released a few days early under Parole Board authority.

Mand. Repar.-Reparoled on specific date set by Parole Board (includes S.B. 252 reparaes). n/a - breakout not available prior to June 2004.

Wknd Mand. Repar.-Mandatory Reparole releases scheduled to release on a weekend; released a few days early under Parole Board authority.

HB 1351 Early - Released to parole, subject to earn time provisions of H.B. 09-1351.

Accel Trans - Accelerated Transition released to parole prior to mandatory release by parole board based on program eligibility criteria.

Sentence discharge-Completion of sentence with no further supervision.

H.B. 1087 discharge-Completion of sentence with no further supervision, subject to earn time provisions of H.B. 95-1087.

Martin/ Cooper discharge-Completion of sentence with no further supervision, sex offender subject to Martin/Cooper Supreme Court decision.

Chgs/ Det. discharge-Completion of sentence, released to other law enforcement for pending charges or detainees.

Probation-Released by court to probation.

Ct. Ord. Dsch.-Released by court order.

Appeal Bond-Released by court to appeal bond.

Deceased-Offender death in prison.

***Due to the decrease in community transportation services, the Department implemented a procedural change in December 2005 with regards to releasing inmates on weekends. As a result, discretionary releases increased and mandatory releases decreased. However, beginning December 2008, the implementation of a new electronic coding system enabled these releases to be correctly classified as weekend mandatory parole and mandatory reparole releases.**

COLORADO DEPARTMENT OF CORRECTIONS
ADULT INMATE RELEASES FROM PRISON

1/5/2010

Male Population Only

	Parole*							Discharge				Other				Total
	Discretionary	Mandatory	Wknd. Mand.	Mand. Repar.	Wknd. Mand. Repar.	HB 1351 Early	Accel Trans	Sentence	H.B. 1087	Martin/Cooper	Chgs/Det.	Probation	Ct. Ord. Dsch.	Appeal Bond	Deceased	
Dec-09	215	110	110	112	99	35	28	24	47	2	19	11	5	0	7	824
Nov-09	230	120	119	88	77	31	44	30	61	5	6	14	5	1	3	834
Oct-09	232	145	115	84	77	28	107	40	48	1	11	6	10	0	6	910
Sep-09	200	133	129	82	91	48	15	29	55	5	12	10	7	0	3	819
Aug-09	204	124	104	104	55	68	N/A	37	51	2	19	7	7	0	3	785
Jul-09	184	153	127	105	77	23	N/A	32	59	4	8	14	8	0	5	799
FY 2010-Avg.	211	131	117	96	79	39	N/A	32	54	3	13	10	7	0	5	829
FY 2009-Avg.	294	167	N/A	80	N/A	N/A	N/A	31	56	5	15	10	9	0	4	786
FY 2008-Avg.	397	162	N/A	76	N/A	N/A	N/A	32	48	8	16	10	9	0	4	762
FY 2007-Avg.	359	175	N/A	77	N/A	N/A	N/A	29	45	9	15	11	8	0	4	733
FY 2006-Avg.	196	233	N/A	84	N/A	N/A	N/A	35	46	13	14	15	9	0	5	648

Female Population Only

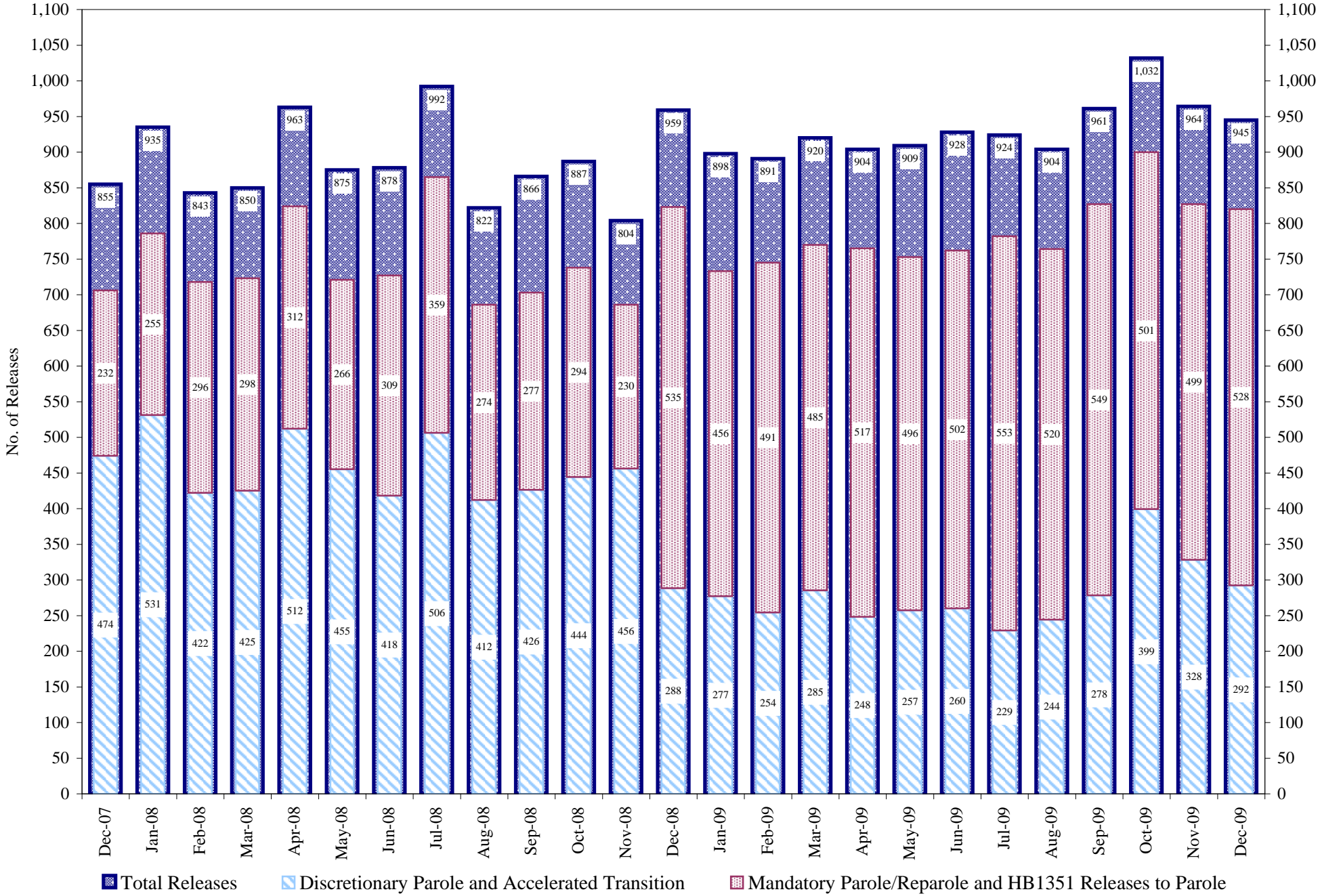
	Parole*							Discharge				Other				Total
	Discretionary	Mandatory	Wknd. Mand.	Mand. Repar.	Wknd. Mand. Repar.	HB 1351 Early	Accel Trans	Sentence	H.B. 1087	Martin/Cooper	Chgs/Det.	Probation	Ct. Ord. Dsch.	Appeal Bond	Deceased	
Dec-09	45	9	11	21	10	11	4	1	5	0	0	1	2	0	1	121
Nov-09	34	21	12	15	11	5	20	1	9	0	2	0	0	0	0	130
Oct-09	45	13	9	7	13	10	15	2	8	0	0	0	0	0	0	122
Sep-09	50	18	14	8	16	10	13	5	5	0	1	2	0	0	0	142
Aug-09	40	15	15	12	8	15	N/A	3	8	1	0	2	0	0	0	119
Jul-09	45	18	15	14	11	10	N/A	1	9	0	0	0	2	0	0	125
FY 2010-Avg.	43	16	13	13	12	10	N/A	2	7	0	1	1	1	0	0	127
FY 2009-Avg.	49	21	N/A	13	N/A	N/A	N/A	3	7	0	2	2	1	0	0	112
FY 2008-Avg.	69	23	N/A	12	N/A	N/A	N/A	2	7	0	2	2	2	0	0	119
FY 2007-Avg.	63	23	N/A	11	N/A	N/A	N/A	2	6	0	1	2	1	0	0	109
FY 2006-Avg.	39	34	N/A	14	N/A	N/A	N/A	3	5	0	1	2	1	0	0	98

Definitions of Release Types

See previous page.

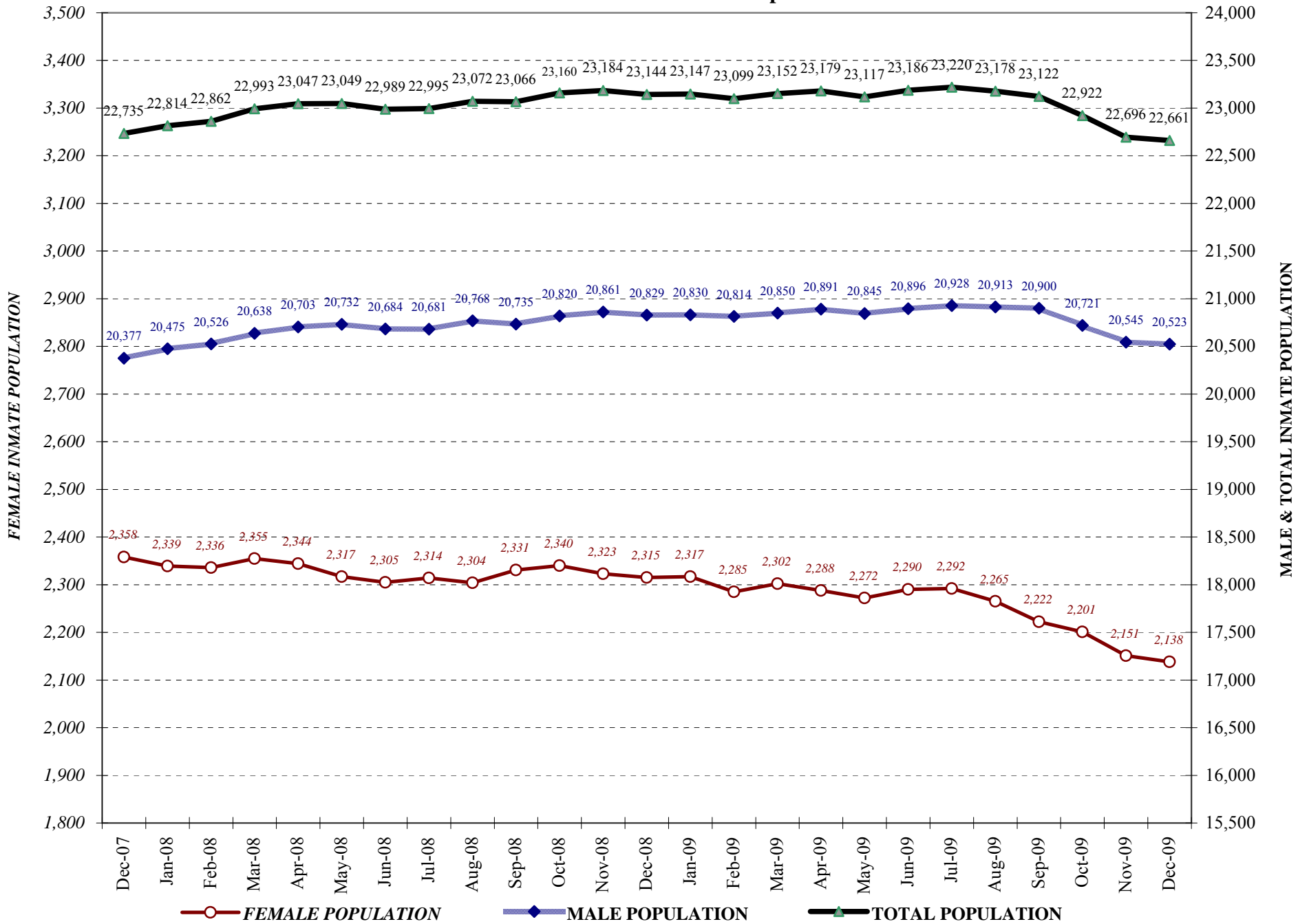
COLORADO DEPARTMENT OF CORRECTIONS

Adult Prison Releases

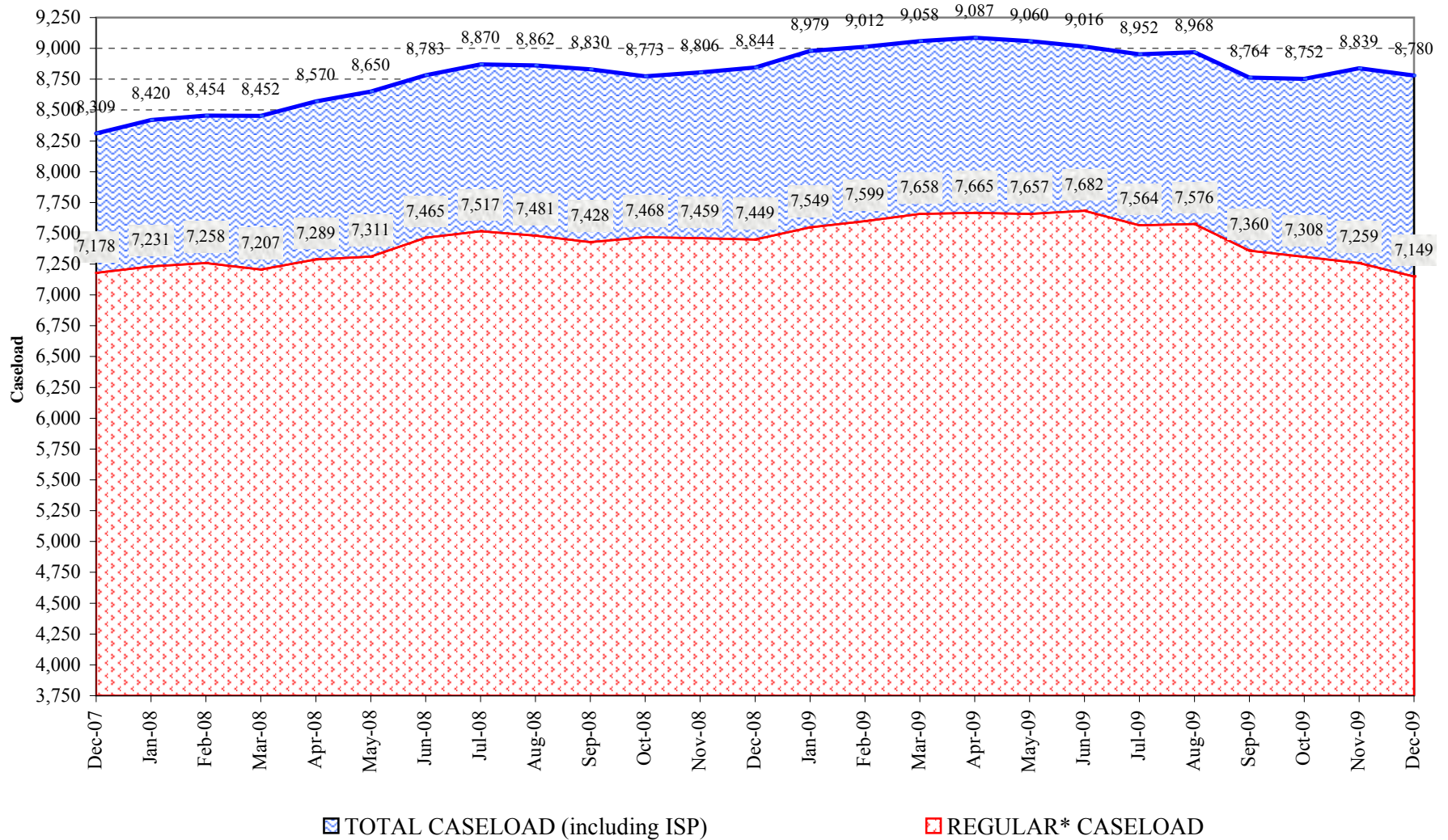


Total releases include releases to discretionary parole and accelerated transition, mandatory parole/reparole and HB1351, all types of discharges and other releases as detailed on the previous two pages.

COLORADO DEPARTMENT OF CORRECTIONS Adult Jurisdiction Inmate Population



COLORADO DEPARTMENT OF CORRECTIONS Parole Population



* Regular caseload includes interstate parole, but excludes out-of-state parolees and absconders.