

**COLORADO DEPARTMENT OF CORRECTIONS
MONTHLY POPULATION AND CAPACITY REPORT
as of November 30, 2009**

	11/30/2009	11/30/09			2-Dec-09	
	OPERATIONAL CAPACITY*	ON-GRDS POPULATION	OFF-GRDS POPULATION	TOTAL POPULATION	OPERATIONAL CAPACITY*	ON-GRDS POPULATION
COLO STATE PENITENTIARY	756	746	1	747	756	740
CENTENNIAL CORR FAC	336	320	0	320	336	324
STERLING CORR FAC	2,545	2,453	23	2,476	2,545	2,495
LIMON CORR FAC	953	929	7	936	953	942
ARK VALLEY CORR FAC	1,007	1,001	8	1,009	1,007	1,002
BUENA VISTA CORR FAC	926	769	14	783	926	904
BUENA VISTA MIN CTR	292	280	5	285	292	287
COLO TERR CORR FAC	944	916	17	933	944	905
FORT LYON CORR FAC	500	482	8	490	500	481
FREMONT CORR FAC	1,661	1,597	15	1,612	1,661	1,652
LA VISTA CORR FAC	519	450	7	457	519	493
ARROWHEAD CORR CTR	494	490	2	492	494	483
FOUR MILE CORR CTR	499	495	6	501	499	496
TRINIDAD CORR FAC	484	473	7	480	484	479
S.T.U. at Y.O.S.	30	13	0	13	30	9
SKYLINE CORR CTR	249	247	1	248	249	248
COLORADO CORR CTR	150	147	1	148	150	145
DELTA CORR CTR	484	470	2	472	484	465
RIFLE CORR CTR	192	189	1	190	192	184
COLO CORR ALT PROGRAM	100	89	5	94	100	57
COLO WOMEN'S CORR FAC	0	0	0	0	224	211
DENVER WOMEN'S CORR FAC	976	851	9	860	866	746
DENVER REC DIAG CTR	480	428	18	446	480	479
SAN CARLOS CORR FAC	255	243	3	246	255	245
SUBTOTAL	14,832	14,078	160	14,238	14,946	14,472
CONTRACTS:						
BENT COUNTY CORR CTR		1,341	29	1,370		922
HUERFANO COUNTY CORR CTR		0	0	0		750
CROWLEY COUNTY CORR FAC		1,646	24	1,670		1,643
KIT CARSON COUNTY CORR FAC		1,284	15	1,299		1,044
CHEYENNE MTN REENTRY CTR		693	4	697		671
HIGH PLAINS CORR FAC		237	4	241		265
OFF-GROUNDS POPULATION:						
ESCAPEES/WALKAWAYS				228		228
REVOCATIONS-JAIL				0		0
JAIL BACKLOG:						
BACKLOG LESS THAN 72 HOURS			16		8	
BACKLOG GREATER THAN 72 HOURS (FISCAL YTD AVE =67			56		101	
BACKLOG-PAROLEES AWAITING TRANSFER			54		26	
TOTAL JAIL BACKLOG			126			135
COUNTY JAIL CONTRACTS			13			7
COMMUNITY CORRECTIONS						
COMMUNITY						
RESIDENTIAL		1,531		1,531	1,486	1,486
NON-RESIDENTIAL			88	88	102	102
PAROLE REVOCATIONS				0	0	0
REVOKED-RET TO CUST		221	105	326	278	278
REGRESSIONS			68	68	36	36
TOTAL COMMUNITY		1,752	261	2,013	1,902	1,902
ISP						
RESIDENTIAL		759		759	849	849
NON-RESIDENTIAL			35	35	42	42
REGRESSIONS			7	7	6	6
TOTAL ISP		759	42	801	897	897
TOTAL COMM. CORRECTIONS		2,511	303	2,814	2,799	2,799
MALE POPULATION				20,545		20,861
FEMALE POPULATION				2,151		2,323
TOTAL INMATE JURISDICTIONAL POPULATION				22,696		23,184

*OPERATIONAL CAPACITY INCLUDES ALL BEDS AVAILABLE FOR USE, INCLUDING MANAGEMENT CONTROL UNITS, BUT EXCLUDES EMERGENCY DOUBLE BUNKING

COLORADO DEPARTMENT OF CORRECTIONS
MONTHLY POPULATION AND CAPACITY REPORT
as of November 30, 2009

2-Dec-09

CURRENT MONTH CHANGES IN CAPACITY:

NET MONTHLY GROWTH RATE:

CURRENT MONTH	-226
FISCAL YEAR-TO-DATE AVERAGE	-98

YOUTHFUL OFFENDER SYSTEM

	----- 11/30/09 -----			11/30/08
	PUEBLO	COMM. CORR.	TOTAL POPULATION	TOTAL POPULATION
INTAKE/IDO	3		3	8
RFP/REMEDATION	14		14	18
PHASE I	162		162	142
PHASE II	9		9	14
PHASE III		34	34	42
OFF GROUNDS/BACKLOG			7	3
TOTAL Y.O.S. POPULATION	188	34	229	227

	CURRENT MONTH	FISCAL YR. TO DATE
YOS ADMISSIONS	6	27
YOS RELEASES:		
COMPLETION OF SENTENCE	2	13
JUDICIAL RELEASE TO PROB/CT ORD DISCHG	0	0
JUDICIAL TRANSFER TO DOC	0	0
TERMINATION/FAILURE	2	4
DECEASED	0	0
TOTAL RELEASES	4	17

PAROLE CASELOAD

	----- 11/30/09 -----			----- 10/31/09 -----		----- 11/30/08 -----	
	DOMESTIC	INTERST PAR/PROB	TOTAL CASELOAD	DOMESTIC	TOTAL CASELOAD	DOMESTIC	TOTAL CASELOAD
DENVER REGION							
REGULAR	2,635	79	2,714	2,657	2,732	2,686	2,771
ISP	<u>712</u>		<u>712</u>	<u>653</u>	<u>653</u>	<u>620</u>	<u>620</u>
SUBTOTAL	<u>3,347</u>	<u>79</u>	<u>3,426</u>	<u>3,310</u>	<u>3,385</u>	<u>3,306</u>	<u>3,391</u>
NORTHEAST REGION							
REGULAR	1,882	102	1,984	1,868	1,970	1,931	2,029
ISP	<u>429</u>		<u>429</u>	<u>390</u>	<u>390</u>	<u>322</u>	<u>322</u>
SUBTOTAL	<u>2,311</u>	<u>102</u>	<u>2,413</u>	<u>2,258</u>	<u>2,360</u>	<u>2,253</u>	<u>2,351</u>
SOUTHEAST REGION							
REGULAR	1,785	85	1,870	1,815	1,906	1,795	1,877
ISP	<u>306</u>		<u>306</u>	<u>261</u>	<u>261</u>	<u>294</u>	<u>294</u>
SUBTOTAL	<u>2,091</u>	<u>85</u>	<u>2,176</u>	<u>2,076</u>	<u>2,167</u>	<u>2,089</u>	<u>2,171</u>
WESTERN REGION							
REGULAR	644	47	691	652	700	737	782
ISP	<u>133</u>		<u>133</u>	<u>140</u>	<u>140</u>	<u>111</u>	<u>111</u>
SUBTOTAL	<u>777</u>	<u>47</u>	<u>824</u>	<u>792</u>	<u>840</u>	<u>848</u>	<u>893</u>
TOTAL CASELOAD							
REGULAR	6,946	313	7,259	6,992	7,308	7,149	7,459
ISP	<u>1,580</u>		<u>1,580</u>	<u>1,444</u>	<u>1,444</u>	<u>1,347</u>	<u>1,347</u>
TOTAL	<u>8,526</u>	<u>313</u>	<u>8,839</u>	<u>8,436</u>	<u>8,752</u>	<u>8,496</u>	<u>8,806</u>
ADDITIONAL CASELOAD:							
OUT-OF-STATE PAROLEES			2,124		2,067		1,939
PAROLEE ABSCONDERS		697			705		828

COLORADO DEPARTMENT OF CORRECTIONS
ADULT INMATE JURISDICTIONAL POPULATION (1)

DATE: 12/2/2009

DATE	MALE POPULATION			FEMALE POPULATION			TOTAL POPULATION		
	Male Population	Net Change	Fiscal Y-T-D Average	Female Population	Net Change	Fiscal Y-T-D Average	Total Population	Net Change	Fiscal Y-T-D Average
11-30-09	20,545	-176		2,151	-50		22,696	-226	
10-31-09	20,721	-179		2,201	-21		22,922	-200	
09-30-09	20,900	-13	-70	2,222	-43	-28	23,122	-56	-98
08-31-09	20,913	-15		2,265	-27		23,178	-42	
07-31-09	20,928	32		2,292	2		23,220	34	
06-30-09	20,896	51		2,290	18		23,186	69	
05-31-09	20,845	-46		2,272	-16		23,117	-62	
04-30-09	20,891	41		2,288	-14		23,179	27	
03-31-09	20,850	36		2,302	17		23,152	53	
02-28-09	20,814	-16		2,285	-32		23,099	-48	
01-31-09	20,830	1		2,317	2		23,147	3	
12-31-08	20,829	-32	16	2,315	-8	-1	23,144	-40	15
11-30-08	20,861	41		2,323	-17		23,184	24	
10-31-08	20,820	85		2,340	9		23,160	94	
09-30-08	20,735	-33		2,331	27		23,066	-6	
08-31-08	20,768	87		2,304	-10		23,072	77	
07-31-08	20,681	-3		2,314	9		22,995	6	
06-30-08	20,684	-48		2,305	-12		22,989	-60	
05-31-08	20,732	29		2,317	-27		23,049	2	
04-30-08	20,703	65		2,344	-11		23,047	54	
03-31-08	20,638	112		2,355	19		22,993	131	
02-29-08	20,526	51		2,336	-3		22,862	48	
01-31-08	20,475	98		2,339	-19		22,814	79	
12-31-07	20,377	-60	42	2,358	-1	-3	22,735	-61	39
11-30-07	20,437	94		2,359	29		22,796	123	
10-31-07	20,343	85		2,330	2		22,673	87	
09-30-07	20,258	-4		2,328	6		22,586	2	
08-31-07	20,262	107		2,322	-14		22,584	93	
07-31-07	20,155	-23		2,336	-5		22,491	-28	
06-30-07	20,178		32	2,341		10	22,519		42
06-30-06	19,792		97	2,220		12	22,012		109
06-30-05	18,631		68	2,073		27	20,704		95
06-30-04	17,814		49	1,755		11	19,569		60
06-30-03	17,226		57	1,620		10	18,846		67
06-30-02	16,539		87	1,506		14	18,045		101
06-30-01	15,493		63	1,340		6	16,833		70
06-30-00	14,733		99	1,266		7	15,999		106
06-30-99	13,547		75	1,179		14	14,726		89
06-30-98	12,647			1,016			13,663		

(1) Adult inmate jurisdictional population includes on-grounds, off-grounds, out-of-state, escapees, and jail backlog and excludes offenders sentenced to the Youthful Offender System (YOS).

COLORADO DEPARTMENT OF CORRECTIONS
ADULT INMATE RELEASES FROM PRISON
TOTAL Population (Male and Female)

12/2/2009

	Parole*							Discharge				Other				Total
	Discretionary	Mandatory	Wknd. Mand.	Mand. Repar.	Wknd. Mand. Repar.	HB 1351 Early	Accel Trans	Sentence	H.B. 1087	Martin/Cooper	Chgs/Det.	Probation	Ct. Ord. Dsch.	Appeal Bond	Deceased	
Nov-09	264	141	131	103	88	36	63	31	70	5	8	14	5	1	3	963
Oct-09	276	158	124	91	90	38	123	42	56	1	11	6	10	0	6	1,032
Sep-09	250	151	143	90	107	58	28	34	60	5	13	12	7	0	3	961
Aug-09	244	139	119	116	63	83	N/A	40	59	3	19	9	7	0	3	904
Jul-09	229	171	142	119	88	33	N/A	33	68	4	8	14	10	0	5	924
FY 2010-Avg.	253	152	132	104	87	50	N/A	36	63	4	12	11	8	0	4	914
FY 2009-Avg.	343	188	N/A	93	N/A	N/A	N/A	34	63	5	17	12	10	0	4	898
FY 2008-Avg.	466	186	N/A	88	N/A	N/A	N/A	34	56	8	17	12	11	0	4	881
FY 2007-Avg.	422	198	N/A	89	N/A	N/A	N/A	31	50	10	16	13	9	0	4	843
FY 2006-Avg.	234	266	N/A	98	N/A	N/A	N/A	38	50	13	15	16	10	0	5	746

Definitions of Release Types

Discretionary parole-Released to parole through Parole Board discretion prior to mandatory release or sentence discharge date.

Mandatory parole-Released to parole on mandatory release date.

Wknd Mand.-Mandatory releases scheduled to release on a weekend; released a few days early under Parole Board authority.

Mand. Repar.-Reparoled on specific date set by Parole Board (includes S.B. 252 reparoles). n/a - breakout not available prior to June 2004.

Wknd Mand. Repar.-Mandatory Reparole releases scheduled to release on a weekend; released a few days early under Parole Board authority.

HB 1351 Early - Released to parole, subject to earn time provisions of H.B. 09-1351.

Accel Trans - Accelerated Transition released to parole prior to mandatory release by parole board based on program eligibility criteria.

Sentence discharge-Completion of sentence with no further supervision.

H.B. 1087 discharge-Completion of sentence with no further supervision, subject to earn time provisions of H.B. 95-1087.

Martin/ Cooper discharge-Completion of sentence with no further supervision, sex offender subject to Martin/Cooper Supreme Court decision.

Chgs/ Det. discharge-Completion of sentence, released to other law enforcement for pending charges or detainees.

Probation-Released by court to probation.

Ct. Ord. Dsch.-Released by court order.

Appeal Bond-Released by court to appeal bond.

Deceased-Offender death in prison.

***Due to the decrease in community transportation services, the Department implemented a procedural change in December 2005 with regards to releasing inmates on weekends. As a result, discretionary releases increased and mandatory releases decreased. However, beginning December 2008, the implementation of a new electronic coding system enabled these releases to be correctly classified as weekend mandatory parole and mandatory reparole releases.**

COLORADO DEPARTMENT OF CORRECTIONS

ADULT INMATE RELEASES FROM PRISON

12/2/2009

Male Population Only

	Parole*							Discharge				Other				Total
	Discre- tionary	Mand- atory	Wknd. Mand.	Mand. Repar.	Wknd. Mand. Repar.	HB 1351 Early	Accel Trans	Sentence	H.B. 1087	Martin/ Cooper	Chgs/ Det.	Probation	Ct. Ord. Dsch.	Appeal Bond	Deceased	
Nov-09	230	120	119	88	77	31	43	30	61	5	6	14	5	1	3	833
Oct-09	231	145	115	84	77	28	108	40	48	1	11	6	10	0	6	910
Sep-09	200	133	129	82	91	48	15	29	55	5	12	10	7	0	3	819
Aug-09	204	124	104	104	55	68	N/A	37	51	2	19	7	7	0	3	785
Jul-09	184	153	127	105	77	23	N/A	32	59	4	8	14	8	0	5	799
FY 2010-Avg.	210	135	119	93	75	40	N/A	34	55	3	11	10	7	0	4	796
FY 2009-Avg.	294	167	N/A	80	N/A	N/A	N/A	31	56	5	15	10	9	0	4	786
FY 2008-Avg.	397	162	N/A	76	N/A	N/A	N/A	32	48	8	16	10	9	0	4	762
FY 2007-Avg.	359	175	N/A	77	N/A	N/A	N/A	29	45	9	15	11	8	0	4	733
FY 2006-Avg.	196	233	N/A	84	N/A	N/A	N/A	35	46	13	14	15	9	0	5	648

Female Population Only

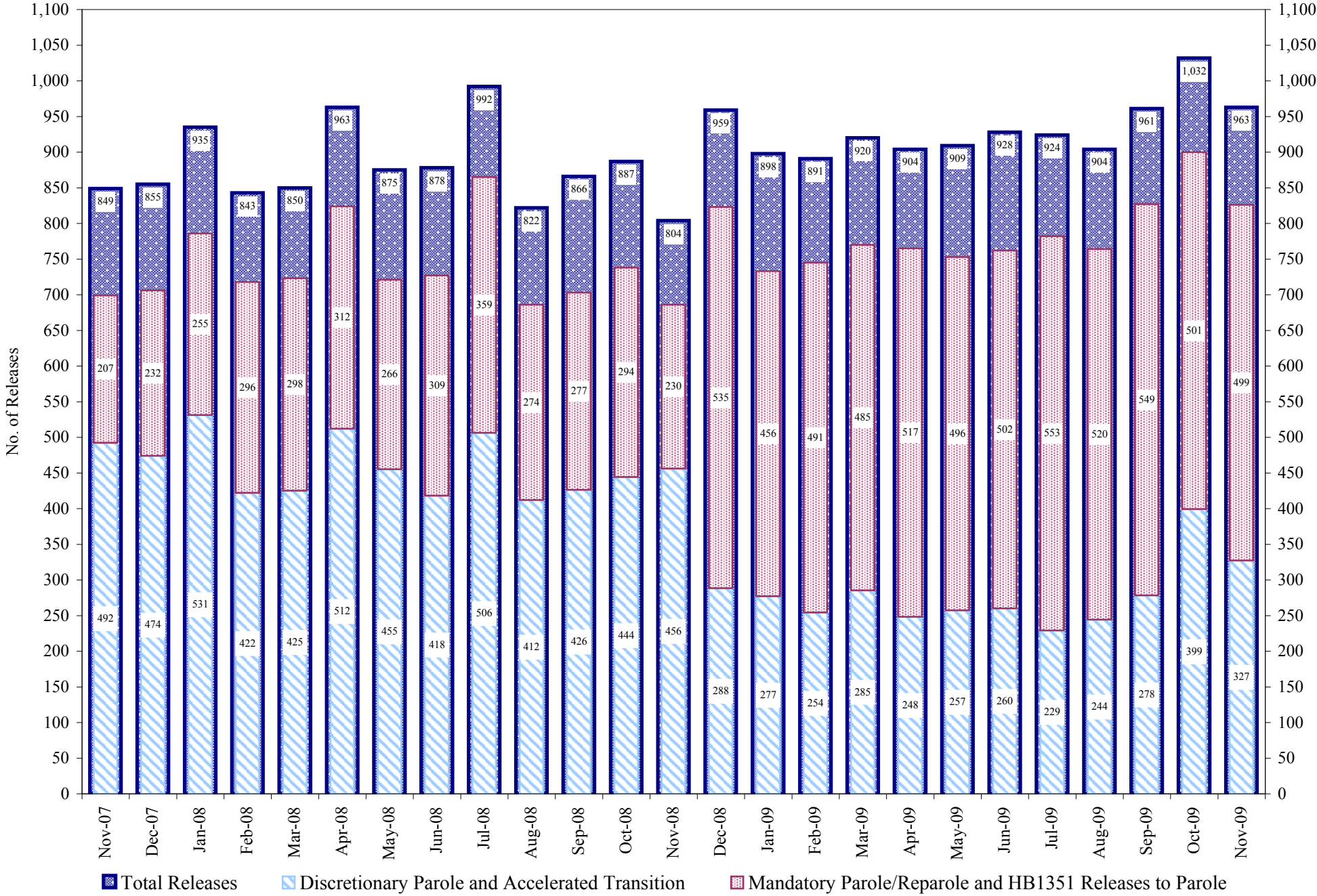
	Parole*							Discharge				Other				Total
	Discre- tionary	Mand- atory	Wknd. Mand.	Mand. Repar.	Wknd. Mand. Repar.	HB 1351 Early	Accel Trans	Sentence	H.B. 1087	Martin/ Cooper	Chgs/ Det.	Probation	Ct. Ord. Dsch.	Appeal Bond	Deceased	
Nov-09	34	21	12	15	11	5	20	1	9	0	2	0	0	0	0	130
Oct-09	45	13	9	7	13	10	15	2	8	0	0	0	0	0	0	122
Sep-09	50	18	14	8	16	10	13	5	5	0	1	2	0	0	0	142
Aug-09	40	15	15	12	8	15	N/A	3	8	1	0	2	0	0	0	119
Jul-09	45	18	15	14	11	10	N/A	1	9	0	0	0	2	0	0	125
FY 2010-Avg.	43	17	13	11	12	10	N/A	2	8	0	1	1	0	0	0	118
FY 2009-Avg.	49	21	N/A	13	N/A	N/A	N/A	3	7	0	2	2	1	0	0	112
FY 2008-Avg.	69	23	N/A	12	N/A	N/A	N/A	2	7	0	2	2	2	0	0	119
FY 2007-Avg.	63	23	N/A	11	N/A	N/A	N/A	2	6	0	1	2	1	0	0	109
FY 2006-Avg.	39	34	N/A	14	N/A	N/A	N/A	3	5	0	1	2	1	0	0	98

Definitions of Release Types

See previous page.

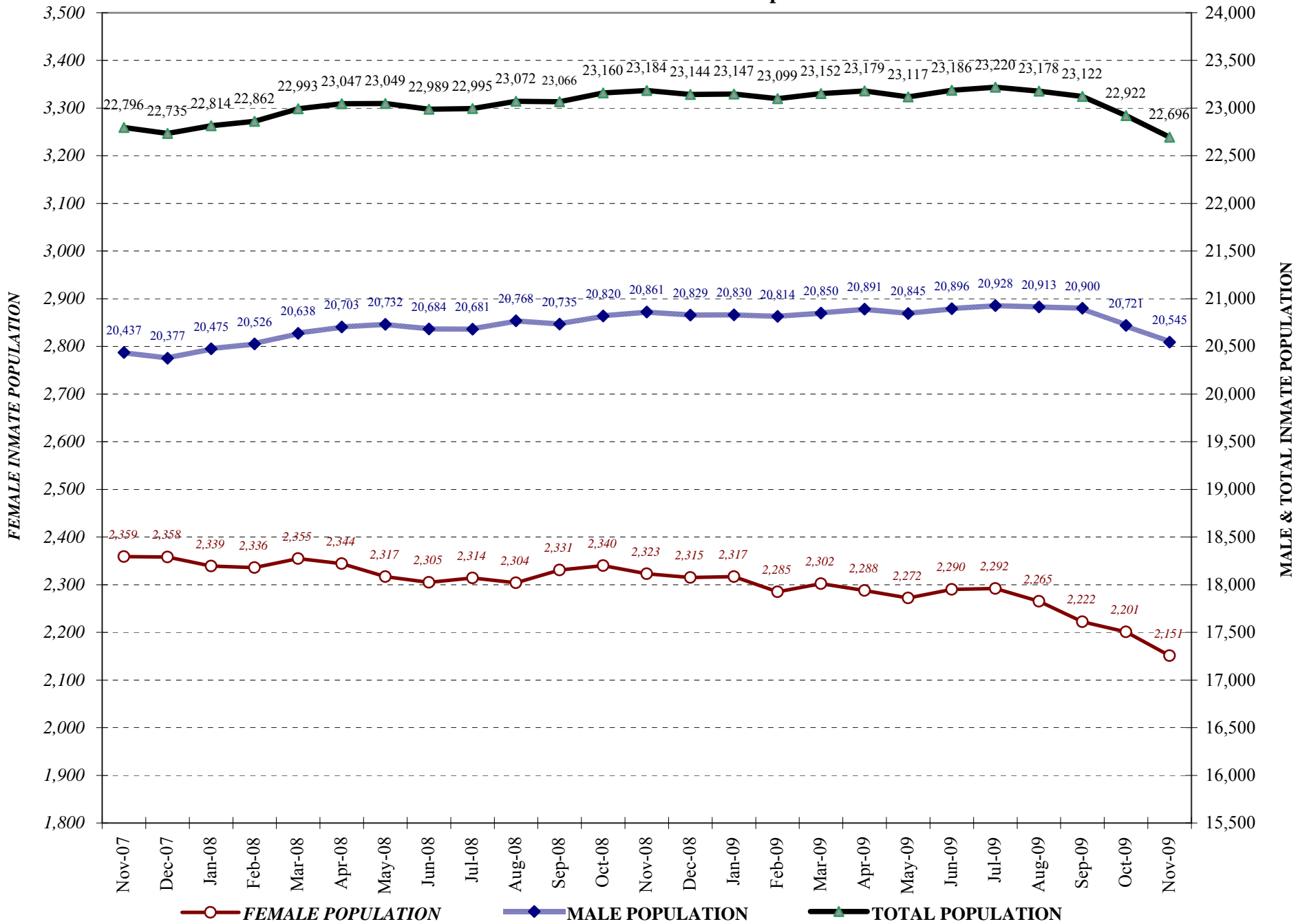
COLORADO DEPARTMENT OF CORRECTIONS

Adult Prison Releases

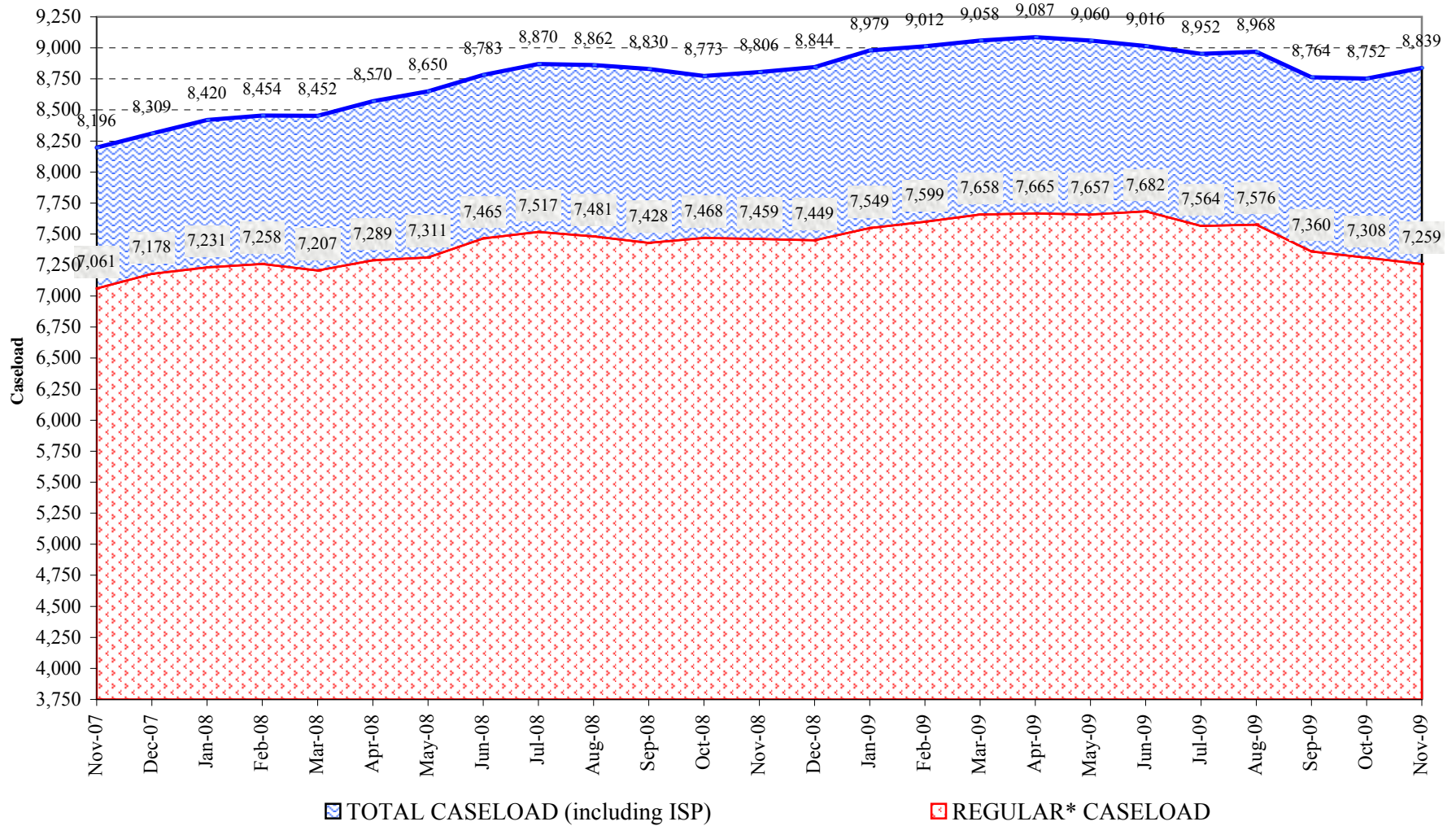


Total releases include releases to discretionary parole and accelerated transition, mandatory parole/reparole and HB1351, all types of discharges and other releases as detailed on the previous two pages.

COLORADO DEPARTMENT OF CORRECTIONS Adult Jurisdiction Inmate Population



COLORADO DEPARTMENT OF CORRECTIONS Parole Population



* Regular caseload includes interstate parole, but excludes out-of-state parolees and absconders.