

**COLORADO DEPARTMENT OF CORRECTIONS
MONTHLY POPULATION AND CAPACITY REPORT
as of September 30, 2009**

6-Oct-09

	9/30/2009	09/30/09			09/30/08	
	OPERATIONAL CAPACITY*	ON-GRDS POPULATION	OFF-GRDS POPULATION	TOTAL POPULATION	OPERATIONAL CAPACITY*	ON-GRDS POPULATION
COLO STATE PENITENTIARY	756	748	1	749	756	723
CENTENNIAL CORR FAC	336	294	1	295	336	315
STERLING CORR FAC	2,545	2,514	35	2,549	2,545	2,486
LIMON CORR FAC	953	937	5	942	953	962
ARK VALLEY CORR FAC	1,007	997	12	1,009	1,007	997
BUENA VISTA CORR FAC	926	773	8	781	926	929
BUENA VISTA MIN CTR	292	286	3	289	292	293
COLO TERR CORR FAC	944	895	12	907	944	947
FORT LYON CORR FAC	500	483	8	491	500	495
FREMONT CORR FAC	1,661	1,639	20	1,659	1,661	1,667
LA VISTA CORR FAC	519	476	4	480	519	482
ARROWHEAD CORR CTR	494	491	3	494	494	495
FOUR MILE CORR CTR	499	495	3	498	499	502
TRINIDAD CORR FAC	484	477	11	488	484	479
S.T.U. at Y.O.S.	30	28	2	30	30	28
SKYLINE CORR CTR	249	249	2	251	249	246
COLORADO CORR CTR	150	150	2	152	150	148
DELTA CORR CTR	484	479	0	479	484	482
RIFLE CORR CTR	192	192	1	193	192	193
COLO CORR ALT PROGRAM	100	77	7	84	100	92
COLO WOMEN'S CORR FAC	0	0	0	0	224	216
DENVER WOMEN'S CORR FAC	976	856	7	863	866	771
DENVER REC DIAG CTR	480	473	17	490	384	423
SAN CARLOS CORR FAC	255	250	4	254	255	253
SUBTOTAL	14,832	14,259	168	14,427	14,850	14,624
CONTRACTS:						
BENT COUNTY CORR CTR		1,362	35	1,397		1,002
HUERFANO COUNTY CORR CTR		0	0	0		753
CROWLEY COUNTY CORR FAC		1,632	26	1,658		1,645
KIT CARSON COUNTY CORR FAC		1,339	22	1,361		1,074
CHEYENNE MTN REENTRY CTR		727	7	734		597
HIGH PLAINS CORR FAC		265	6	271		250
OFF-GROUNDS POPULATION:						
ESCAPEES/WALKAWAYS				231		232
REVOCATIONS-JAIL				0		0
JAIL BACKLOG:						
BACKLOG LESS THAN 72 HOURS			49		82	
BACKLOG GREATER THAN 72 HOURS (FISCAL YTD AVE =68			24		37	
BACKLOG-PAROLEES AWAITING TRANSFER			49		27	
TOTAL JAIL BACKLOG			122			146
COUNTY JAIL CONTRACTS			21			10
COMMUNITY CORRECTIONS						
COMMUNITY						
RESIDENTIAL		1,628		1,628	1,416	1,416
NON-RESIDENTIAL			86	86	57	57
PAROLE REVOCATIONS				0	0	0
REVOKED-RET TO CUST		244	73	317	251	251
REGRESSIONS			61	61	93	93
TOTAL COMMUNITY		1,872	220	2,092	1,817	1,817
ISP						
RESIDENTIAL		763		763	858	858
NON-RESIDENTIAL			38	38	38	38
REGRESSIONS			7	7	20	20
TOTAL ISP		763	45	808	916	916
TOTAL COMM. CORRECTIONS		2,635	265	2,900	2,733	2,733
MALE POPULATION				20,900		20,735
FEMALE POPULATION				2,222		2,331
TOTAL INMATE JURISDICTIONAL POPULATION				23,122		23,066

*OPERATIONAL CAPACITY INCLUDES ALL BEDS AVAILABLE FOR USE, INCLUDING MANAGEMENT CONTROL UNITS, BUT EXCLUDES EMERGENCY DOUBLE BUNKING

COLORADO DEPARTMENT OF CORRECTIONS
MONTHLY POPULATION AND CAPACITY REPORT
as of September 30, 2009

6-Oct-09

CURRENT MONTH CHANGES IN CAPACITY:

NET MONTHLY GROWTH RATE:

CURRENT MONTH	-56
FISCAL YEAR-TO-DATE AVERAGE	-21

YOUTHFUL OFFENDER SYSTEM

	----- 09/30/09 -----			09/30/08
	PUEBLO	COMM. CORR.	TOTAL POPULATION	TOTAL POPULATION
INTAKE/IDO	8		8	5
RFP/REMEDATION	15		15	18
PHASE I	154		154	144
PHASE II	12		12	13
PHASE III		34	34	41
OFF GROUNDS/BACKLOG			4	4
TOTAL Y.O.S. POPULATION	189	34	227	225

	CURRENT MONTH	FISCAL YR. TO DATE
YOS ADMISSIONS	7	16
YOS RELEASES:		
COMPLETION OF SENTENCE	0	5
JUDICIAL RELEASE TO PROB/CT ORD DISCHG	0	0
JUDICIAL TRANSFER TO DOC	0	0
TERMINATION/FAILURE	0	1
DECEASED	0	0
TOTAL RELEASES	0	6

PAROLE CASELOAD

	----- 09/30/09 -----			----- 8/31/09 -----		----- 09/30/08 -----	
	DOMESTIC	INTERST PAR/PROB	TOTAL CASELOAD	DOMESTIC	TOTAL CASELOAD	DOMESTIC	TOTAL CASELOAD
DENVER REGION							
REGULAR	2,675	76	2,751	2,718	2,795	2,683	2,765
ISP	636		636	639	639	635	635
SUBTOTAL	3,311	76	3,387	3,357	3,434	3,318	3,400
NORTHEAST REGION							
REGULAR	1,892	104	1,996	1,973	2,071	1,976	2,075
ISP	358		358	341	341	309	309
SUBTOTAL	2,250	104	2,354	2,314	2,412	2,285	2,384
SOUTHEAST REGION							
REGULAR	1,814	93	1,907	1,881	1,974	1,771	1,845
ISP	274		274	287	287	335	335
SUBTOTAL	2,088	93	2,181	2,168	2,261	2,106	2,180
WESTERN REGION							
REGULAR	656	50	706	685	736	698	743
ISP	136		136	125	125	123	123
SUBTOTAL	792	50	842	810	861	821	866
TOTAL CASELOAD							
REGULAR	7,037	323	7,360	7,257	7,576	7,128	7,428
ISP	1,404		1,404	1,392	1,392	1,402	1,402
TOTAL	8,441	323	8,764	8,649	8,968	8,530	8,830
ADDITIONAL CASELOAD:							
OUT-OF-STATE PAROLEES			2,021		2,025		1,953
PAROLEE ABSCONDERS		699			705		806

COLORADO DEPARTMENT OF CORRECTIONS
ADULT INMATE JURISDICTIONAL POPULATION (1)

DATE: 10/6/2009

DATE	MALE POPULATION			FEMALE POPULATION			TOTAL POPULATION		
	Male Population	Net Change	Fiscal Y-T-D Average	Female Population	Net Change	Fiscal Y-T-D Average	Total Population	Net Change	Fiscal Y-T-D Average
09-30-09	20,900	-13		2,222	-43		23,122	-56	
08-31-09	20,913	-15	1	2,265	-27	-23	23,178	-42	-21
07-31-09	20,928	32		2,292	2		23,220	34	
06-30-09	20,896	51		2,290	18		23,186	69	
05-31-09	20,845	-46		2,272	-16		23,117	-62	
04-30-09	20,891	41		2,288	-14		23,179	27	
03-31-09	20,850	36		2,302	17		23,152	53	
02-28-09	20,814	-16		2,285	-32		23,099	-48	
01-31-09	20,830	1		2,317	2		23,147	3	
12-31-08	20,829	-32	16	2,315	-8	-1	23,144	-40	15
11-30-08	20,861	41		2,323	-17		23,184	24	
10-31-08	20,820	85		2,340	9		23,160	94	
09-30-08	20,735	-33		2,331	27		23,066	-6	
08-31-08	20,768	87		2,304	-10		23,072	77	
07-31-08	20,681	-3		2,314	9		22,995	6	
06-30-08	20,684	-48		2,305	-12		22,989	-60	
05-31-08	20,732	29		2,317	-27		23,049	2	
04-30-08	20,703	65		2,344	-11		23,047	54	
03-31-08	20,638	112		2,355	19		22,993	131	
02-29-08	20,526	51		2,336	-3		22,862	48	
01-31-08	20,475	98		2,339	-19		22,814	79	
12-31-07	20,377	-60	42	2,358	-1	-3	22,735	-61	39
11-30-07	20,437	94		2,359	29		22,796	123	
10-31-07	20,343	85		2,330	2		22,673	87	
09-30-07	20,258	-4		2,328	6		22,586	2	
08-31-07	20,262	107		2,322	-14		22,584	93	
07-31-07	20,155	-23		2,336	-5		22,491	-28	
06-30-07	20,178		32	2,341		10	22,519		42
06-30-06	19,792		97	2,220		12	22,012		109
06-30-05	18,631		68	2,073		27	20,704		95
06-30-04	17,814		49	1,755		11	19,569		60
06-30-03	17,226		57	1,620		10	18,846		67
06-30-02	16,539		87	1,506		14	18,045		101
06-30-01	15,493		63	1,340		6	16,833		70
06-30-00	14,733		99	1,266		7	15,999		106
06-30-99	13,547		75	1,179		14	14,726		89
06-30-98	12,647			1,016			13,663		

(1) Adult inmate jurisdictional population includes on-grounds, off-grounds, out-of-state, escapees, and jail backlog and excludes offenders sentenced to the Youthful Offender System (Y.O.S.).

COLORADO DEPARTMENT OF CORRECTIONS
ADULT INMATE RELEASES FROM PRISON
TOTAL Population (Male and Female)

10/6/2009

	Parole*							Discharge				Other				Total
	Discretionary	Mandatory	Wknd. Mand.	Mand. Repar.	Wknd. Mand. Repar.	HB 1351 Early	Accel Trans	Sentence	H.B. 1087	Martin/Cooper	Chgs/Det.	Probation	Ct. Ord. Dsch.	Appeal Bond	Deceased	
Sep-09	247	151	143	90	107	58	31	34	60	5	13	12	7	0	3	961
Aug-09	244	139	119	116	63	83	N/A	40	59	3	19	9	7	0	3	904
Jul-09	229	171	142	119	88	33	N/A	33	68	4	8	14	10	0	5	924
FY 2010-Avg.	240	154	135	108	86	58	N/A	36	62	4	13	12	8	0	4	924
FY 2009-Avg.	343	188	N/A	93	N/A	N/A	N/A	34	63	5	17	12	10	0	4	898
FY 2008-Avg.	466	186	N/A	88	N/A	N/A	N/A	34	56	8	17	12	11	0	4	881
FY 2007-Avg.	422	198	N/A	89	N/A	N/A	N/A	31	50	10	16	13	9	0	4	843
FY 2006-Avg.	234	266	N/A	98	N/A	N/A	N/A	38	50	13	15	16	10	0	5	746

Definitions of Release Types

Discretionary parole-Released to parole through Parole Board discretion prior to mandatory release or sentence discharge date.

Mandatory parole-Released to parole on mandatory release date.

Wknd Mand.-Mandatory releases scheduled to release on a weekend; released a few days early under Parole Board authority.

Mand. Repar-Reparoled on specific date set by Parole Board (includes S.B. 252 reparaoles). n/a - breakout not available prior to June 2004.

Wknd Mand. Repar.-Mandatory Reparole releases scheduled to release on a weekend; released a few days early under Parole Board authority.

HB 1351 Early - Released to parole, subject to earn time provisions of H.B. 09-1351.

Accel Trans - Accelerated Transition released to parole prior to mandatory release by parole board based on program eligibility criteria.

Sentence discharge-Completion of sentence with no further supervision.

H.B. 1087 discharge-Completion of sentence with no further supervision, subject to earn time provisions of H.B. 95-1087.

Martin/ Cooper discharge-Completion of sentence with no further supervision, sex offender subject to Martin/Cooper Supreme Court decision.

Chgs/ Det. discharge-Completion of sentence, released to other law enforcement for pending charges or detainees.

Probation-Released by court to probation.

Ct. Ord. Dsch.-Released by court order.

Appeal Bond-Released by court to appeal bond.

Deceased-Offender death in prison.

***Due to the decrease in community transportation services, the Department implemented a procedural change in December 2005 with regards to releasing inmates on weekends. As a result, discretionary releases increased and mandatory releases decreased. However, beginning December 2008, the implementation of a new electronic coding system enabled these releases to be correctly classified as weekend mandatory parole and mandatory reparole releases.**

COLORADO DEPARTMENT OF CORRECTIONS

ADULT INMATE RELEASES FROM PRISON

10/6/2009

Male Population Only

	Parole*							Discharge				Other				Total
	Discre- tionary	Mand- atory	Wknd. Mand.	Mand. Repar.	Wknd. Mand. Repar.	HB 1351 Early	Accel Trans	Sentence	H.B. 1087	Martin/ Cooper	Chgs/ Det.	Probation	Ct. Ord. Dsch.	Appeal Bond	Deceased	
Sep-09	197	133	129	82	91	48	18	29	55	5	12	10	7	0	3	819
Aug-09	204	124	104	104	55	68	N/A	37	51	2	19	7	7	0	3	785
Jul-09	184	153	127	105	77	23	N/A	32	59	4	8	14	8	0	5	799
FY 2010-Avg.	195	137	120	97	74	46	N/A	33	55	4	13	10	7	0	4	795
FY 2009-Avg.	294	167	N/A	80	N/A	N/A	N/A	31	56	5	15	10	9	0	4	786
FY 2008-Avg.	397	162	N/A	76	N/A	N/A	N/A	32	48	8	16	10	9	0	4	762
FY 2007-Avg.	359	175	N/A	77	N/A	N/A	N/A	29	45	9	15	11	8	0	4	733
FY 2006-Avg.	196	233	N/A	84	N/A	N/A	N/A	35	46	13	14	15	9	0	5	648

Female Population Only

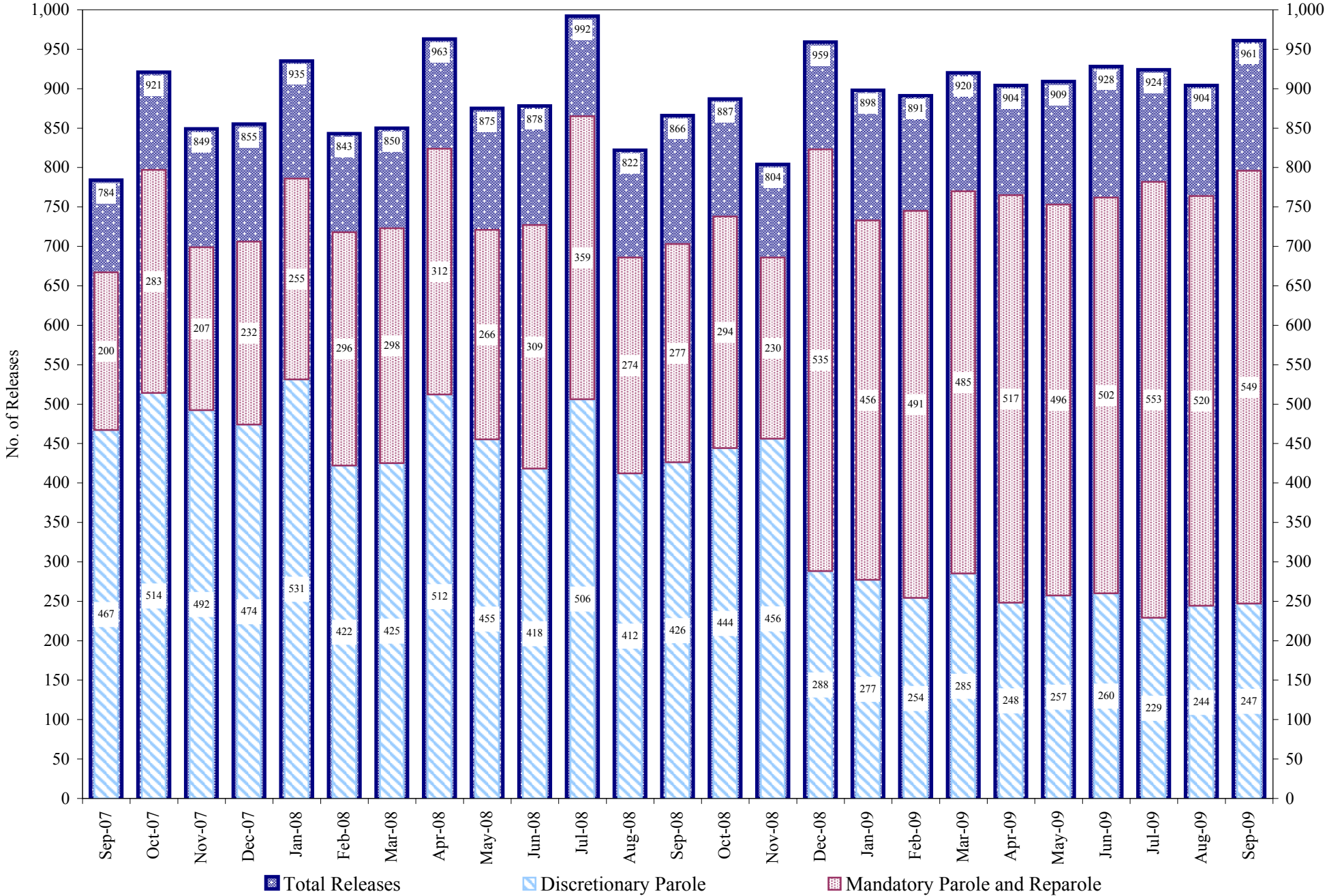
	Parole*							Discharge				Other				Total
	Discre- tionary	Mand- atory	Wknd. Mand.	Mand. Repar.	Wknd. Mand. Repar.	HB 1351 Early	Accel Trans	Sentence	H.B. 1087	Martin/ Cooper	Chgs/ Det.	Probation	Ct. Ord. Dsch.	Appeal Bond	Deceased	
Sep-09	50	18	14	8	16	10	13	5	5	0	1	2	0	0	0	142
Aug-09	40	15	15	12	8	15	N/A	3	8	1	0	2	0	0	0	119
Jul-09	45	18	15	14	11	10	N/A	1	9	0	0	0	2	0	0	125
FY 2010-Avg.	45	17	15	11	12	12	N/A	3	7	0	0	1	1	0	0	129
FY 2009-Avg.	49	21	N/A	13	N/A	N/A	N/A	3	7	0	2	2	1	0	0	112
FY 2008-Avg.	69	23	N/A	12	N/A	N/A	N/A	2	7	0	2	2	2	0	0	119
FY 2007-Avg.	63	23	N/A	11	N/A	N/A	N/A	2	6	0	1	2	1	0	0	109
FY 2006-Avg.	39	34	N/A	14	N/A	N/A	N/A	3	5	0	1	2	1	0	0	98

Definitions of Release Types

See previous page.

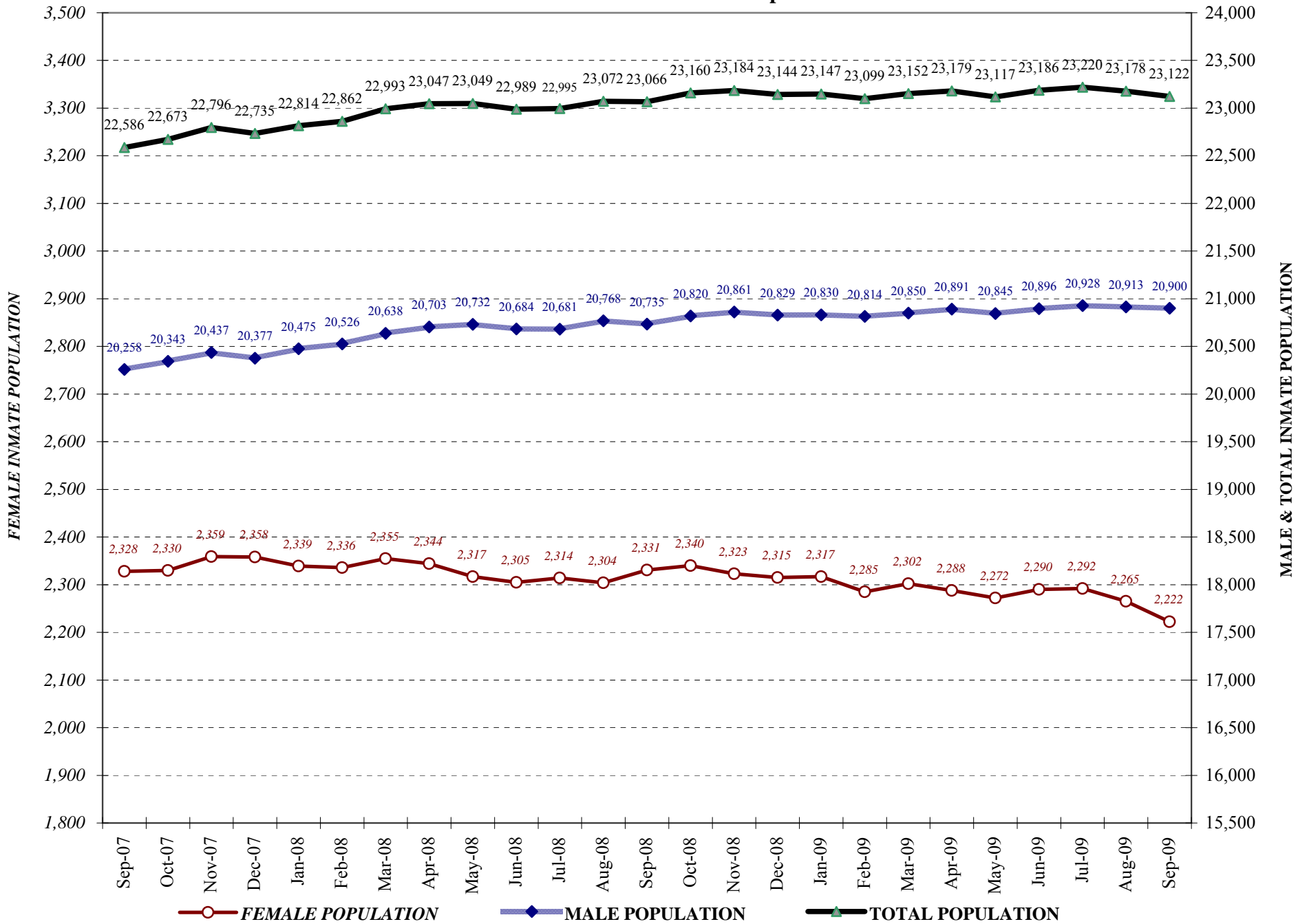
COLORADO DEPARTMENT OF CORRECTIONS

Adult Prison Releases

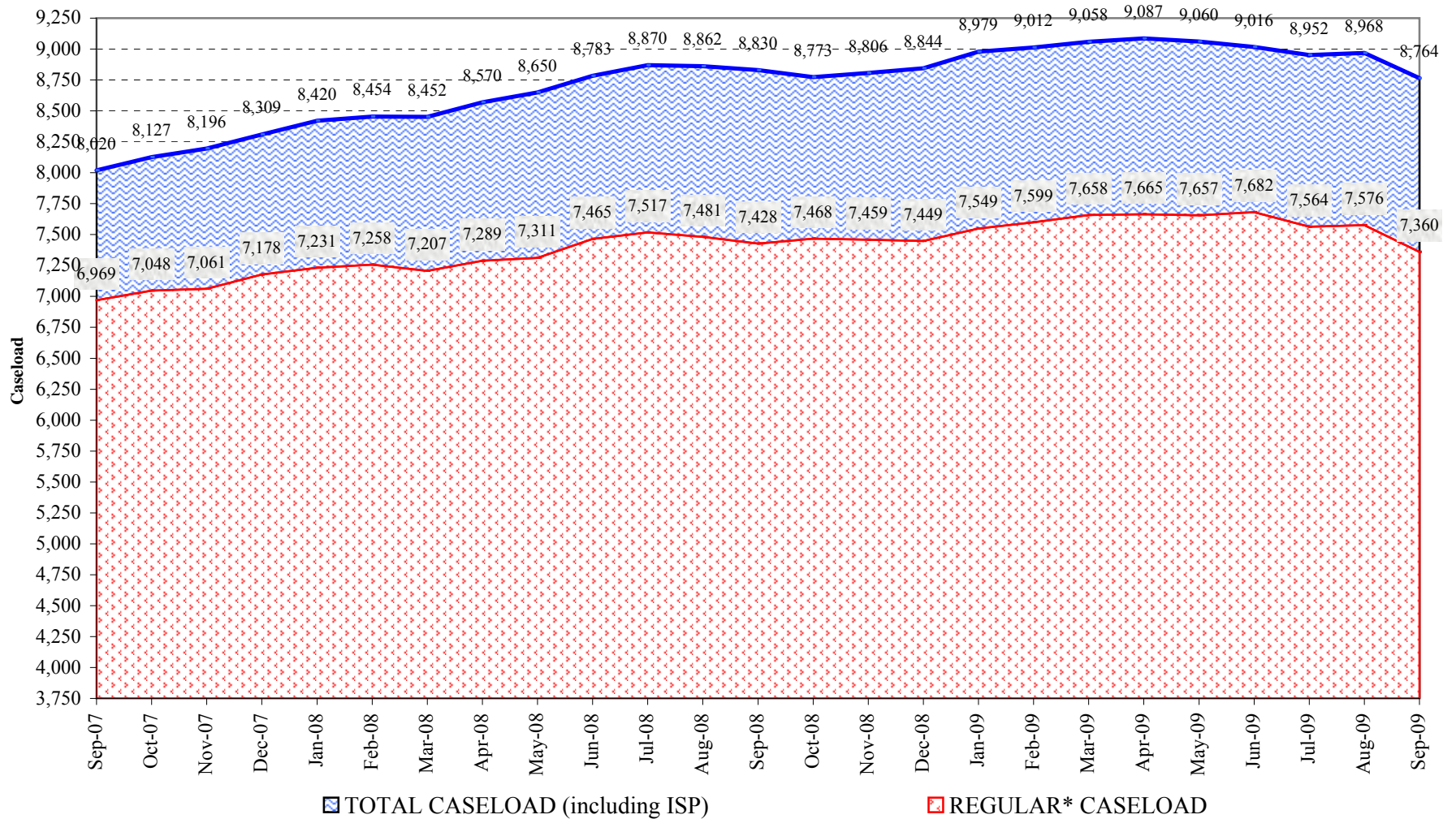


Total releases include releases to discretionary parole, mandatory parole and reparole, all types of discharges and other releases as detailed on the previous two pages.

COLORADO DEPARTMENT OF CORRECTIONS Adult Jurisdiction Inmate Population



COLORADO DEPARTMENT OF CORRECTIONS Parole Population



* Regular caseload includes interstate parole, but excludes out-of-state parolees and absconders.