

**COLORADO DEPARTMENT OF CORRECTIONS
MONTHLY POPULATION AND CAPACITY REPORT
as of August 31, 2009**

	8/31/2009	08/31/09			4-Sep-09	
	OPERATIONAL CAPACITY*	ON-GRDS POPULATION	OFF-GRDS POPULATION	TOTAL POPULATION	OPERATIONAL CAPACITY*	ON-GRDS POPULATION
COLO STATE PENITENTIARY	756	752	3	755	756	715
CENTENNIAL CORR FAC	336	308	0	308	336	318
STERLING CORR FAC	2,545	2,513	25	2,538	2,545	2,522
LIMON CORR FAC	953	948	5	953	953	939
ARK VALLEY CORR FAC	1,007	1,000	15	1,015	1,007	1,001
BUENA VISTA CORR FAC	926	781	15	796	926	923
BUENA VISTA MIN CTR	292	268	18	286	292	285
COLO TERR CORR FAC	944	937	8	945	944	923
FORT LYON CORR FAC	500	487	0	487	500	481
FREMONT CORR FAC	1,661	1,604	21	1,625	1,661	1,656
LA VISTA CORR FAC	519	475	6	481	519	478
ARROWHEAD CORR CTR	494	490	2	492	494	492
FOUR MILE CORR CTR	499	494	5	499	499	493
TRINIDAD CORR FAC	484	476	12	488	484	474
S.T.U. at Y.O.S.	30	23	0	23	30	15
SKYLINE CORR CTR	249	248	0	248	249	248
COLORADO CORR CTR	150	148	2	150	150	150
DELTA CORR CTR	484	478	1	479	484	471
RIFLE CORR CTR	192	173	17	190	192	189
COLO CORR ALT PROGRAM	100	73	10	83	100	90
COLO WOMEN'S CORR FAC	0	0	0	0	224	207
DENVER WOMEN'S CORR FAC	976	892	11	903	866	775
DENVER REC DIAG CTR	480	471	20	491	384	370
SAN CARLOS CORR FAC	255	248	2	250	255	245
SUBTOTAL	14,832	14,287	198	14,485	14,850	14,460
CONTRACTS:						
BENT COUNTY CORR CTR		1,377	37	1,414	1,466	968
HUERFANO COUNTY CORR CTR		0	0	0	774	747
CROWLEY COUNTY CORR FAC		1,638	26	1,664	1,720	1,614
KIT CARSON COUNTY CORR FAC		1,354	18	1,372	1,562	1,060
CHEYENNE MTN REENTRY CTR		727	4	731	672	605
HIGH PLAINS CORR FAC		269	5	274	280	242
OFF-GROUNDS POPULATION:			288			268
ESCAPEES/WALKAWAYS				221		227
REVOCATIONS-JAIL				0		0
JAIL BACKLOG:						
BACKLOG LESS THAN 72 HOURS			21		76	
BACKLOG GREATER THAN 72 HOURS (FISCAL YTD AVE =68			46		75	
BACKLOG-PAROLEES AWAITING TRANSFER			53		34	
TOTAL JAIL BACKLOG			120			185
COUNTY JAIL CONTRACTS			24			32
COMMUNITY CORRECTIONS						
COMMUNITY						
RESIDENTIAL		1,637		1,637	1,415	1,415
NON-RESIDENTIAL			79	79	0	0
PAROLE REVOCATIONS				0	239	239
REVOKED-RET TO CUST		218	52	270	69	69
REGRESSIONS			60	60	41	41
TOTAL COMMUNITY		1,855	191	2,046	1,764	1,764
ISP						
RESIDENTIAL		778		778	847	847
NON-RESIDENTIAL			39	39	44	44
REGRESSIONS			10	10	9	9
TOTAL ISP		778	49	827	900	900
TOTAL COMM. CORRECTIONS		2,633	240	2,873	2,664	2,664
MALE POPULATION				20,913		20,768
FEMALE POPULATION				2,265		2,304
TOTAL INMATE JURISDICTIONAL POPULATION				23,178		23,072

*OPERATIONAL CAPACITY INCLUDES ALL BEDS AVAILABLE FOR USE, INCLUDING MANAGEMENT CONTROL UNITS, BUT EXCLUDES EMERGENCY DOUBLE BUNKING

COLORADO DEPARTMENT OF CORRECTIONS
MONTHLY POPULATION AND CAPACITY REPORT
as of August 31, 2009

4-Sep-09

CURRENT MONTH CHANGES IN CAPACITY:

NET MONTHLY GROWTH RATE:

CURRENT MONTH	-42
FISCAL YEAR-TO-DATE AVERAGE	-4

YOUTHFUL OFFENDER SYSTEM

	----- 08/31/09 -----			08/31/08
	PUEBLO	COMM. CORR.	TOTAL POPULATION	TOTAL POPULATION
INTAKE/IDO	4		4	7
RFP/REMEDATION	8		8	15
PHASE I	158		158	147
PHASE II	12		12	11
PHASE III		32	32	43
OFF GROUNDS/BACKLOG			6	4
TOTAL Y.O.S. POPULATION	182	32	220	227

	CURRENT MONTH	FISCAL YR. TO DATE
YOS ADMISSIONS	4	9
YOS RELEASES:		
COMPLETION OF SENTENCE	1	5
JUDICIAL RELEASE TO PROB/CT ORD DISCHG	0	0
JUDICIAL TRANSFER TO DOC	0	0
TERMINATION/FAILURE	0	1
DECEASED	0	0
TOTAL RELEASES	1	6

PAROLE CASELOAD

	----- 08/31/09 -----			----- 7/31/09 -----		----- 08/31/08 -----	
	DOMESTIC	INTERST PAR/PROB	TOTAL CASELOAD	DOMESTIC	TOTAL CASELOAD	DOMESTIC	TOTAL CASELOAD
DENVER REGION							
REGULAR	2,718	77	2,795	2,726	2,803	2,677	2,765
ISP	639		639	640	640	646	646
SUBTOTAL	3,357	77	3,434	3,366	3,443	3,323	3,411
NORTHEAST REGION							
REGULAR	1,973	98	2,071	1,935	2,032	1,998	2,097
ISP	341		341	351	351	291	291
SUBTOTAL	2,314	98	2,412	2,286	2,383	2,289	2,388
SOUTHEAST REGION							
REGULAR	1,881	93	1,974	1,882	1,966	1,776	1,862
ISP	287		287	283	283	324	324
SUBTOTAL	2,168	93	2,261	2,165	2,249	2,100	2,186
WESTERN REGION							
REGULAR	685	51	736	713	763	711	757
ISP	125		125	114	114	120	120
SUBTOTAL	810	51	861	827	877	831	877
TOTAL CASELOAD							
REGULAR	7,257	319	7,576	7,256	7,564	7,162	7,481
ISP	1,392		1,392	1,388	1,388	1,381	1,381
TOTAL	8,649	319	8,968	8,644	8,952	8,543	8,862
ADDITIONAL CASELOAD:							
OUT-OF-STATE PAROLEES			2,025		2,041		1,958
PAROLEE ABSCONDERS		705			682		816

COLORADO DEPARTMENT OF CORRECTIONS
ADULT INMATE JURISDICTIONAL POPULATION (1)

DATE: 9/4/2009

DATE	MALE POPULATION			FEMALE POPULATION			TOTAL POPULATION		
	Male Population	Net Change	Fiscal Y-T-D Average	Female Population	Net Change	Fiscal Y-T-D Average	Total Population	Net Change	Fiscal Y-T-D Average
08-31-09	20,913	-15	9	2,265	-27	-13	23,178	-42	-4
07-31-09	20,928	32		2,292	2		23,220	34	
06-30-09	20,896	51		2,290	18		23,186	69	
05-31-09	20,845	-46		2,272	-16		23,117	-62	
04-30-09	20,891	41		2,288	-14		23,179	27	
03-31-09	20,850	36		2,302	17		23,152	53	
02-28-09	20,814	-16		2,285	-32		23,099	-48	
01-31-09	20,830	1		2,317	2		23,147	3	
12-31-08	20,829	-32	16	2,315	-8	-1	23,144	-40	15
11-30-08	20,861	41		2,323	-17		23,184	24	
10-31-08	20,820	85		2,340	9		23,160	94	
09-30-08	20,735	-33		2,331	27		23,066	-6	
08-31-08	20,768	87		2,304	-10		23,072	77	
07-31-08	20,681	-3		2,314	9		22,995	6	
06-30-08	20,684	-48		2,305	-12		22,989	-60	
05-31-08	20,732	29		2,317	-27		23,049	2	
04-30-08	20,703	65		2,344	-11		23,047	54	
03-31-08	20,638	112		2,355	19		22,993	131	
02-29-08	20,526	51		2,336	-3		22,862	48	
01-31-08	20,475	98		2,339	-19		22,814	79	
12-31-07	20,377	-60	42	2,358	-1	-3	22,735	-61	39
11-30-07	20,437	94		2,359	29		22,796	123	
10-31-07	20,343	85		2,330	2		22,673	87	
09-30-07	20,258	-4		2,328	6		22,586	2	
08-31-07	20,262	107		2,322	-14		22,584	93	
07-31-07	20,155	-23		2,336	-5		22,491	-28	
06-30-07	20,178		32	2,341		10	22,519		42
06-30-06	19,792		97	2,220		12	22,012		109
06-30-05	18,631		68	2,073		27	20,704		95
06-30-04	17,814		49	1,755		11	19,569		60
06-30-03	17,226		57	1,620		10	18,846		67
06-30-02	16,539		87	1,506		14	18,045		101
06-30-01	15,493		63	1,340		6	16,833		70
06-30-00	14,733		99	1,266		7	15,999		106
06-30-99	13,547		75	1,179		14	14,726		89
06-30-98	12,647			1,016			13,663		

(1) Adult inmate jurisdictional population includes on-grounds, off-grounds, out-of-state, escapees, and jail backlog and excludes offenders sentenced to the Youthful Offender System (Y.O.S.).

COLORADO DEPARTMENT OF CORRECTIONS
ADULT INMATE RELEASES FROM PRISON
TOTAL Population (Male and Female)

Date: 9/4/2009

	Parole*						Discharge				Other				Total
	Discre- tionary	Mand- atory	Wknd. Mand.	Mand. Repar.	Wknd. Mand. Repar.	HB 1351 Early	Sentence	H.B. 1087	Martin/ Cooper	Chgs/ Det.	Probation	Ct. Ord. Dsch.	Appeal Bond	Deceased	
Aug-09	244	139	119	116	63	83	40	59	3	19	9	7	0	3	904
Jul-09	229	171	142	119	88	33	33	68	4	8	14	10	0	5	924
FY 2010-Avg.	237	155	131	118	76	58	37	64	4	14	12	9	0	4	914
FY 2009-Avg.	343	188	N/A	93	N/A	N/A	34	63	5	17	12	10	0	4	898
FY 2008-Avg.	466	186	N/A	88	N/A	N/A	34	56	8	17	12	11	0	4	881
FY 2007-Avg.	422	198	N/A	89	N/A	N/A	31	50	10	16	13	9	0	4	843
FY 2006-Avg.	234	266	N/A	98	N/A	N/A	38	50	13	15	16	10	0	5	746

Definitions of Release Types

Discretionary parole-Released to parole through Parole Board discretion prior to mandatory release or sentence discharge date.

Mandatory parole-Released to parole on mandatory release date.

Wknd Mand.-Mandatory releases scheduled to release on a weekend; released a few days early under Parole Board authority.

Mand. Repar-Reparoled on specific date set by Parole Board (includes S.B. 252 reparaoles). n/a - breakout not available prior to June 2004.

Wknd Mand. Repar.-Mandatory Reparole releases scheduled to release on a weekend; released a few days early under Parole Board authority.

HB 1351 Early - Released to parole, subject to earn time provisions of H.B. 09-1351.

Sentence discharge-Completion of sentence with no further supervision.

H.B. 1087 discharge-Completion of sentence with no further supervision, subject to earn time provisions of H.B. 95-1087.

Martin/ Cooper discharge-Completion of sentence with no further supervision, sex offender subject to Martin/Cooper Supreme Court decision.

Chgs/ Det. discharge-Completion of sentence, released to other law enforcement for pending charges or detainees.

Probation-Released by court to probation.

Ct. Ord. Dsch.-Released by court order.

Appeal Bond-Released by court to appeal bond.

Deceased-Offender death in prison.

***Due to the decrease in community transportation services, the Department implemented a procedural change in December 2005 with regards to releasing inmates on weekends. As a result, discretionary releases increased and mandatory releases decreased. However, beginning December 2008, the implementation of a new electronic coding system enabled these releases to be correctly classified as weekend mandatory parole and mandatory reparole releases.**

COLORADO DEPARTMENT OF CORRECTIONS
ADULT INMATE RELEASES FROM PRISON

Date: 9/4/2009

Male Population Only

	Parole*						Discharge				Other				Total
	Discre- tionary	Mand- atory	Wknd. Mand.	Mand. Repar.	Wknd. Mand. Repar.	HB 1351 Early	Sentence	H.B. 1087	Martin/ Cooper	Chgs/ Det.	Probation	Ct. Ord. Dsch.	Appeal Bond	Deceased	
Aug-09	204	124	104	104	55	68	37	51	2	19	7	7	0	3	785
Jul-09	184	153	127	105	77	23	32	59	4	8	14	8	0	5	799
FY 2010-Avg.	194	139	116	105	66	46	35	55	3	14	11	8	0	4	792
FY 2009-Avg.	294	167	N/A	80	N/A	N/A	31	56	5	15	10	9	0	4	786
FY 2008-Avg.	397	162	N/A	76	N/A	N/A	32	48	8	16	10	9	0	4	762
FY 2007-Avg.	359	175	N/A	77	N/A	N/A	29	45	9	15	11	8	0	4	733
FY 2006-Avg.	196	233	N/A	84	N/A	N/A	35	46	13	14	15	9	0	5	648

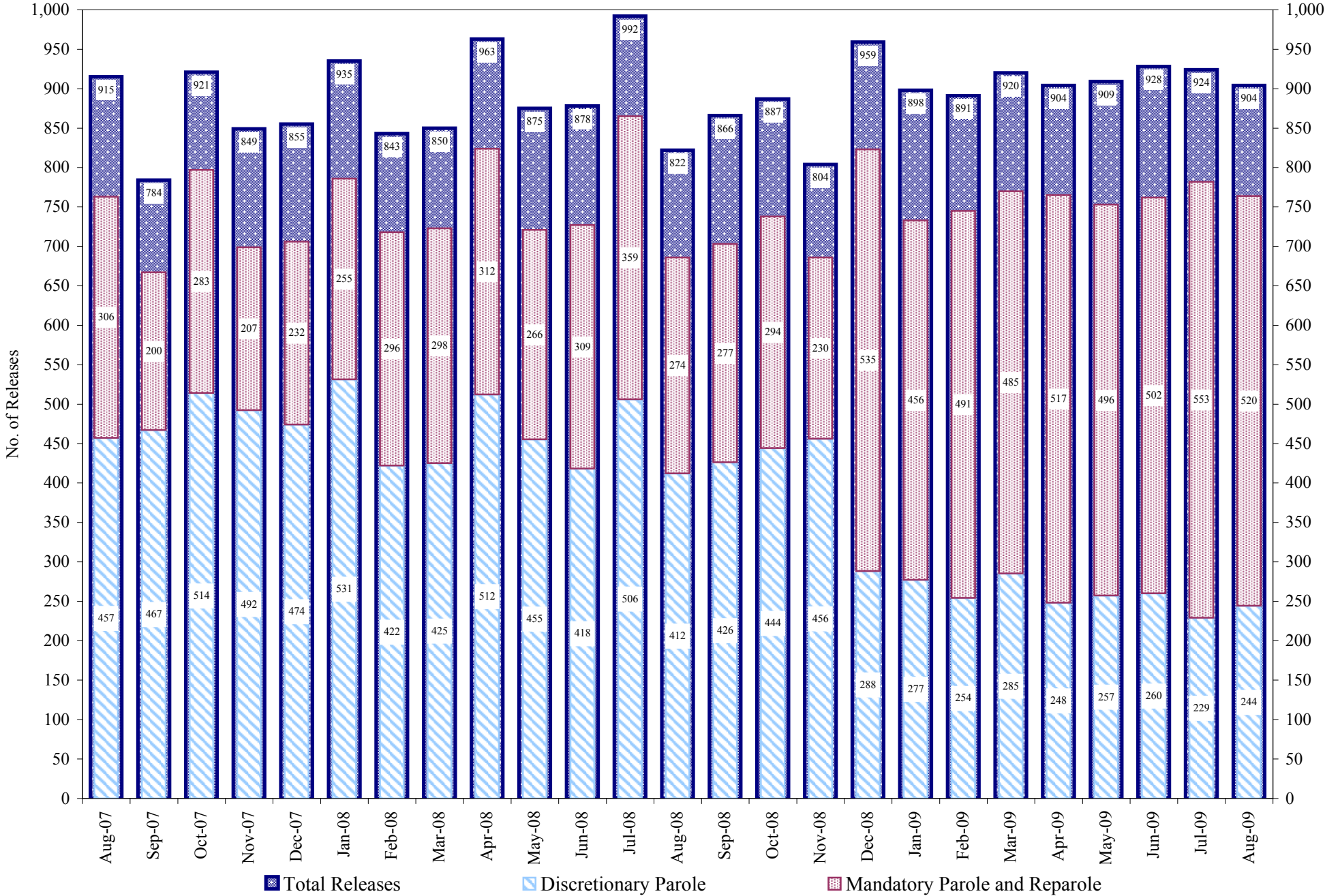
Female Population Only

	Parole*						Discharge				Other				Total
	Discre- tionary	Mand- atory	Wknd. Mand.	Mand. Repar.	Wknd. Mand. Repar.	HB 1351 Early	Sentence	H.B. 1087	Martin/ Cooper	Chgs/ Det.	Probation	Ct. Ord. Dsch.	Appeal Bond	Deceased	
Aug-09	40	15	15	12	8	15	3	8	1	0	2	0	0	0	119
Jul-09	45	18	15	14	11	10	1	9	0	0	0	2	0	0	125
FY 2010-Avg.	43	17	15	13	10	13	2	9	1	0	1	1	0	0	122
FY 2009-Avg.	49	21	N/A	13	N/A	N/A	3	7	0	2	2	1	0	0	112
FY 2008-Avg.	69	23	N/A	12	N/A	N/A	2	7	0	2	2	2	0	0	119
FY 2007-Avg.	63	23	N/A	11	N/A	N/A	2	6	0	1	2	1	0	0	109
FY 2006-Avg.	39	34	N/A	14	N/A	N/A	3	5	0	1	2	1	0	0	98

Definitions of Release Types
See previous page.

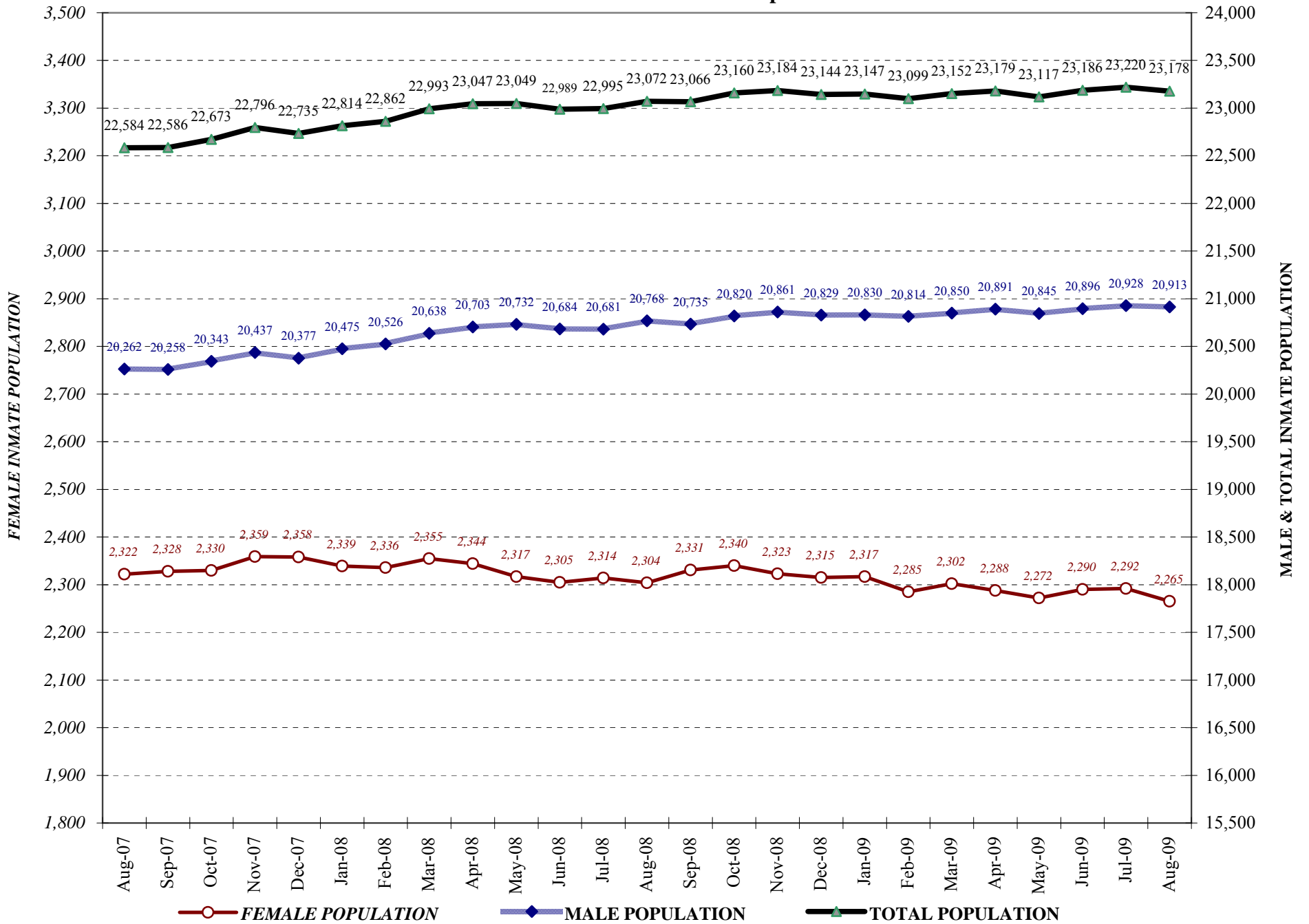
COLORADO DEPARTMENT OF CORRECTIONS

Adult Prison Releases

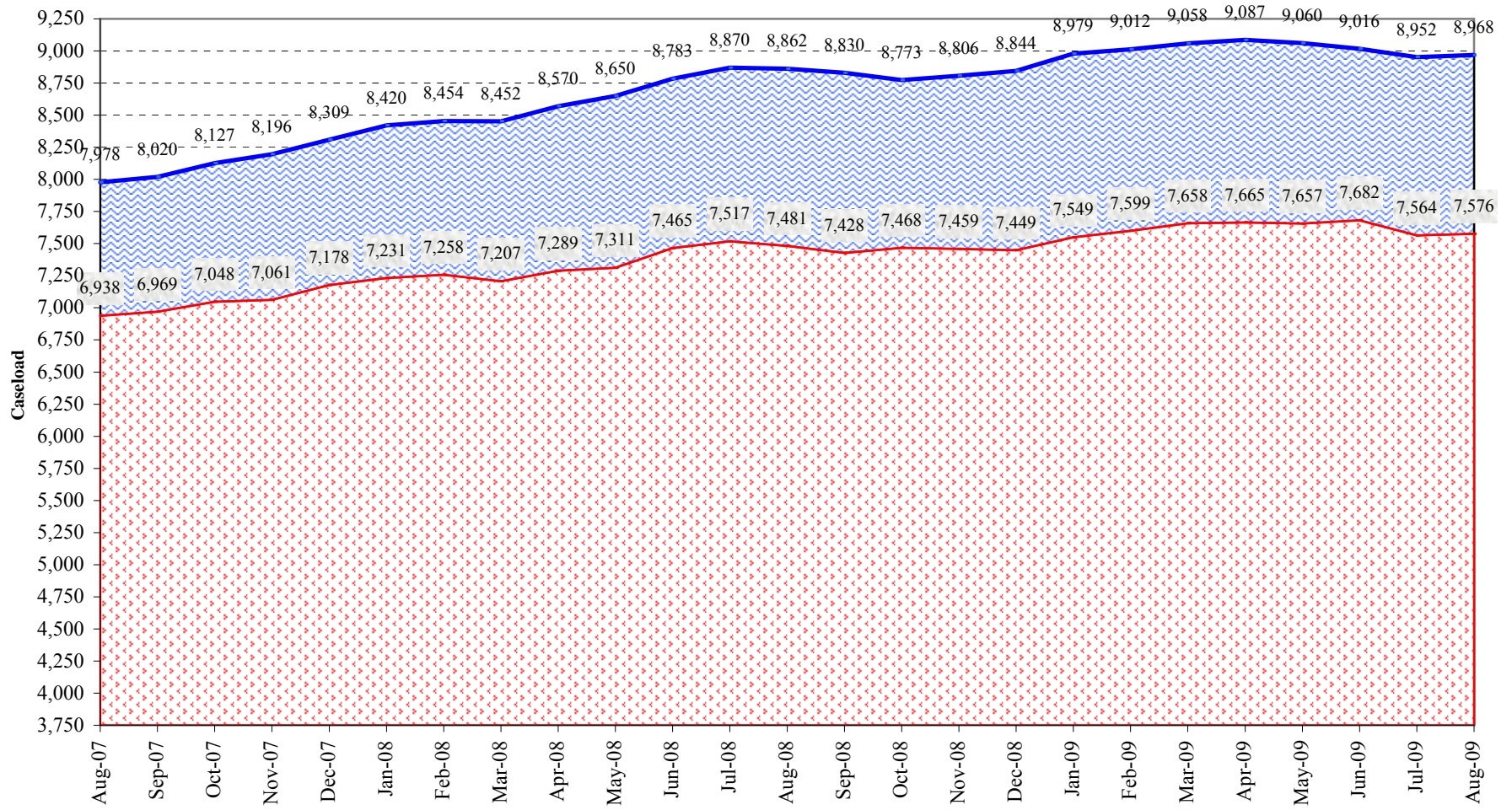


Total releases include releases to discretionary parole, mandatory parole and reparole, all types of discharges and other releases as detailed on the previous two pages.

COLORADO DEPARTMENT OF CORRECTIONS Adult Jurisdictional Inmate Population



COLORADO DEPARTMENT OF CORRECTIONS Parole Population



■ TOTAL CASELOAD (including ISP)

■ REGULAR* CASELOAD

* Regular caseload includes interstate parole, but excludes out-of-state parolees and absconders.