

**COLORADO DEPARTMENT OF CORRECTIONS
MONTHLY POPULATION AND CAPACITY REPORT
as of July 31, 2009**

	7/31/2009	07/31/09			6-Aug-09	
	OPERATIONAL CAPACITY*	ON-GRDS POPULATION	OFF-GRDS POPULATION	TOTAL POPULATION	OPERATIONAL CAPACITY*	ON-GRDS POPULATION
COLO STATE PENITENTIARY	756	748	4	752	756	715
CENTENNIAL CORR FAC	336	304	0	304	336	310
STERLING CORR FAC	2,545	2,525	20	2,545	2,545	2,512
LIMON CORR FAC	953	949	3	952	953	943
ARK VALLEY CORR FAC	1,007	1,004	12	1,016	1,007	1,001
BUENA VISTA CORR FAC	926	853	17	870	926	890
BUENA VISTA MIN CTR	292	283	3	286	292	262
COLO TERR CORR FAC	944	905	13	918	944	934
FORT LYON CORR FAC	500	487	9	496	500	487
FREMONT CORR FAC	1,661	1,649	12	1,661	1,661	1,652
LA VISTA CORR FAC	519	489	7	496	519	465
ARROWHEAD CORR CTR	494	489	2	491	494	482
FOUR MILE CORR CTR	499	496	1	497	499	471
TRINIDAD CORR FAC	484	475	9	484	484	477
S.T.U. at Y.O.S.	30	27	2	29	30	12
SKYLINE CORR CTR	249	249	0	249	249	238
COLORADO CORR CTR	150	139	1	140	150	149
DELTA CORR CTR	484	473	3	476	484	468
RIFLE CORR CTR	192	167	19	186	192	192
COLO CORR ALT PROGRAM	100	70	5	75	100	79
COLO WOMEN'S CORR FAC	0	0	0	0	224	214
DENVER WOMEN'S CORR FAC	976	888	9	897	866	787
DENVER REC DIAG CTR	480	492	18	510	480	388
SAN CARLOS CORR FAC	255	245	5	250	255	247
SUBTOTAL	14,832	14,406	174	14,580	14,946	14,375
CONTRACTS:						
BENT COUNTY CORR CTR		1,345	29	1,374	1,466	945
HUERFANO COUNTY CORR CTR		0	0	0	774	755
CROWLEY COUNTY CORR FAC		1,640	25	1,665	1,720	1,622
KIT CARSON COUNTY CORR FAC		1,313	19	1,332	1,562	1,088
CHEYENNE MTN REENTRY CTR		754	5	759	672	582
HIGH PLAINS CORR FAC		272	4	276	280	238
OFF-GROUNDS POPULATION:						
ESCAPEES/WALKAWAYS				227		237
REVOCATIONS-JAIL				0		0
JAIL BACKLOG:						
BACKLOG LESS THAN 72 HOURS			32		137	
BACKLOG GREATER THAN 72 HOURS (FISCAL YTD AVE =70			38		33	
BACKLOG-PAROLEES AWAITING TRANSFER			70		49	
TOTAL JAIL BACKLOG			140			219
COUNTY JAIL CONTRACTS			22			44
COMMUNITY CORRECTIONS						
COMMUNITY						
RESIDENTIAL		1,585		1,585	1,354	1,354
NON-RESIDENTIAL			102	102	2	2
PAROLE REVOCATIONS				0	223	223
REVOKED-RET TO CUST		229	61	290	58	58
REGRESSIONS			44	44	52	52
TOTAL COMMUNITY		1,814	207	2,021	1,689	1,689
ISP						
RESIDENTIAL		779		779	843	843
NON-RESIDENTIAL			40	40	51	51
REGRESSIONS			5	5	12	12
TOTAL ISP		779	45	824	906	906
TOTAL COMM. CORRECTIONS		2,593	252	2,845	2,595	2,595
MALE POPULATION				20,928		20,681
FEMALE POPULATION				2,292		2,314
TOTAL INMATE JURISDICTIONAL POPULATION				23,220		22,995

*OPERATIONAL CAPACITY INCLUDES ALL BEDS AVAILABLE FOR USE, INCLUDING MANAGEMENT CONTROL UNITS, BUT EXCLUDES EMERGENCY DOUBLE BUNKING

COLORADO DEPARTMENT OF CORRECTIONS
MONTHLY POPULATION AND CAPACITY REPORT
as of July 31, 2009

6-Aug-09

CURRENT MONTH CHANGES IN CAPACITY:

NET MONTHLY GROWTH RATE:

CURRENT MONTH	34
FISCAL YEAR-TO-DATE AVERAGE	34

YOUTHFUL OFFENDER SYSTEM

	----- 07/31/09 -----			07/31/08
	PUEBLO	COMM. CORR.	TOTAL POPULATION	TOTAL POPULATION
INTAKE/IDO	7		7	8
RFP/REMEDICATION	8		8	19
PHASE I	155		155	140
PHASE II	11		11	13
PHASE III		28	28	39
OFF GROUNDS/BACKLOG			8	5
TOTAL Y.O.S. POPULATION	181	28	217	224

	CURRENT MONTH	FISCAL YR. TO DATE
YOS ADMISSIONS	5	5
YOS RELEASES:		
COMPLETION OF SENTENCE	4	4
JUDICIAL RELEASE TO PROB/CT ORD DISCHG	0	0
JUDICIAL TRANSFER TO DOC	0	0
TERMINATION/FAILURE	1	1
DECEASED	0	0
TOTAL RELEASES	5	5

PAROLE CASELOAD

	----- 07/31/09 -----			----- 6/30/09 -----	----- 07/31/08 -----		
	DOMESTIC	INTERST PAR/PROB	TOTAL CASELOAD	DOMESTIC	TOTAL CASELOAD	DOMESTIC	TOTAL CASELOAD
DENVER REGION							
REGULAR	2,726	77	2,803	2,762	2,843	2,737	2,821
ISP	640		640	637	637	636	636
SUBTOTAL	3,366	77	3,443	3,399	3,480	3,373	3,457
NORTHEAST REGION							
REGULAR	1,935	97	2,032	1,993	2,091	1,958	2,056
ISP	351		351	318	318	295	295
SUBTOTAL	2,286	97	2,383	2,311	2,409	2,253	2,351
SOUTHEAST REGION							
REGULAR	1,882	84	1,966	1,899	1,979	1,789	1,874
ISP	283		283	281	281	309	309
SUBTOTAL	2,165	84	2,249	2,180	2,260	2,098	2,183
WESTERN REGION							
REGULAR	713	50	763	717	769	716	766
ISP	114		114	98	98	113	113
SUBTOTAL	827	50	877	815	867	829	879
TOTAL CASELOAD							
REGULAR	7,256	308	7,564	7,371	7,682	7,200	7,517
ISP	1,388		1,388	1,334	1,334	1,353	1,353
TOTAL	8,644	308	8,952	8,705	9,016	8,553	8,870
ADDITIONAL CASELOAD:							
OUT-OF-STATE PAROLEES			2,041		2,029		1,957
PAROLEE ABSCONDERS		682			705		775

COLORADO DEPARTMENT OF CORRECTIONS
ADULT INMATE JURISDICTIONAL POPULATION (1)

DATE: 8/6/2009

DATE	MALE POPULATION			FEMALE POPULATION			TOTAL POPULATION		
	Male Population	Net Change	Fiscal Y-T-D Average	Female Population	Net Change	Fiscal Y-T-D Average	Total Population	Net Change	Fiscal Y-T-D Average
07-31-09	20,928	32	32	2,292	2	2	23,220	34	34
06-30-09	20,896	51		2,290	18		23,186	69	
05-31-09	20,845	-46		2,272	-16		23,117	-62	
04-30-09	20,891	41		2,288	-14		23,179	27	
03-31-09	20,850	36		2,302	17		23,152	53	
02-28-09	20,814	-16		2,285	-32		23,099	-48	
01-31-09	20,830	1		2,317	2		23,147	3	
12-31-08	20,829	-32	16	2,315	-8	-1	23,144	-40	15
11-30-08	20,861	41		2,323	-17		23,184	24	
10-31-08	20,820	85		2,340	9		23,160	94	
09-30-08	20,735	-33		2,331	27		23,066	-6	
08-31-08	20,768	87		2,304	-10		23,072	77	
07-31-08	20,681	-3		2,314	9		22,995	6	
06-30-08	20,684	-48		2,305	-12		22,989	-60	
05-31-08	20,732	29		2,317	-27		23,049	2	
04-30-08	20,703	65		2,344	-11		23,047	54	
03-31-08	20,638	112		2,355	19		22,993	131	
02-29-08	20,526	51		2,336	-3		22,862	48	
01-31-08	20,475	98		2,339	-19		22,814	79	
12-31-07	20,377	-60	42	2,358	-1	-3	22,735	-61	39
11-30-07	20,437	94		2,359	29		22,796	123	
10-31-07	20,343	85		2,330	2		22,673	87	
09-30-07	20,258	-4		2,328	6		22,586	2	
08-31-07	20,262	107		2,322	-14		22,584	93	
07-31-07	20,155	-23		2,336	-5		22,491	-28	
06-30-07	20,178	41		2,341	9		22,519	50	
05-31-07	20,137	-39		2,332	-3		22,469	-42	
04-30-07	20,176	21		2,335	29		22,511	50	
03-31-07	20,155	75		2,306	-17		22,461	58	
02-28-07	20,080	7		2,323	1		22,403	8	
01-31-07	20,073	43		2,322	2		22,395	45	
12-31-06	20,030	12	32	2,320	6	10	22,350	18	42
11-30-06	20,018	44		2,314	11		22,332	55	
10-31-06	19,974	46		2,303	28		22,277	74	
09-30-06	19,928	139		2,275	33		22,203	172	
08-31-06	19,789	-34		2,242	-7		22,031	-41	
07-31-06	19,823	31		2,249	29		22,072	60	
06-30-06	19,792		97	2,220		12	22,012		109
06-30-05	18,631		68	2,073		27	20,704		95
06-30-04	17,814		49	1,755		11	19,569		60
06-30-03	17,226		57	1,620		10	18,846		67
06-30-02	16,539		87	1,506		14	18,045		101
06-30-01	15,493		63	1,340		6	16,833		70
06-30-00	14,733		99	1,266		7	15,999		106
06-30-99	13,547		75	1,179		14	14,726		89
06-30-98	12,647			1,016			13,663		

(1) Adult inmate jurisdictional population includes on-grounds, off-grounds, out-of-state, escapees, and jail backlog and excludes offenders sentenced to the Youthful Offender System (Y.O.S.).

COLORADO DEPARTMENT OF CORRECTIONS
ADULT INMATE RELEASES FROM PRISON
TOTAL Population (Male and Female)

Date: 8/6/2009

	Parole*						Discharge				Other				Total
	Discre- tionary	Mand- atory	Wknd. Mand.	Mand. Repar.	Wknd. Mand. Repar.	HB 1351 Early	Sentence	H.B. 1087	Martin/ Cooper	Chgs/ Det.	Probation	Ct. Ord. Dsch.	Appeal Bond	Deceased	
Jul-09	229	171	142	119	88	33	33	68	4	8	14	10	0	5	924
FY 2010-Avg.	229	171	142	119	88	33	33	68	4	8	14	10	0	5	924
FY 2009-Avg.	343	188	N/A	93	N/A	N/A	34	63	5	17	12	10	0	4	898
FY 2008-Avg.	466	186	N/A	88	N/A	N/A	34	56	8	17	12	11	0	4	881
FY 2007-Avg.	422	198	N/A	89	N/A	N/A	31	50	10	16	13	9	0	4	843
FY 2006-Avg.	234	266	N/A	98	N/A	N/A	38	50	13	15	16	10	0	5	746

Definitions of Release Types

Discretionary parole-Released to parole through Parole Board discretion prior to mandatory release or sentence discharge date.

Mandatory parole-Released to parole on mandatory release date.

Wknd Mand.-Mandatory releases scheduled to release on a weekend; released a few days early under Parole Board authority.

Mand. Repar-Reparoled on specific date set by Parole Board (includes S.B. 252 reparoles). n/a - breakout not available prior to June 2004.

Wknd Mand. Repar.-Mandatory Reparole releases scheduled to release on a weekend; released a few days early under Parole Board authority.

HB 1351 Early - Released to parole, subject to earn time provisions of H.B. 09-1351.

Sentence discharge-Completion of sentence with no further supervision.

H.B. 1087 discharge-Completion of sentence with no further supervision, subject to earn time provisions of H.B. 95-1087.

Martin/ Cooper discharge-Completion of sentence with no further supervision, sex offender subject to Martin/Cooper Supreme Court decision.

Chgs/ Det. discharge-Completion of sentence, released to other law enforcement for pending charges or detainees.

Probation-Released by court to probation.

Ct. Ord. Dsch.-Released by court order.

Appeal Bond-Released by court to appeal bond.

Deceased-Offender death in prison.

***Due to the decrease in community transportation services, the Department implemented a procedural change in December 2005 with regards to releasing inmates on weekends. As a result, discretionary releases increased and mandatory releases decreased. However, beginning December 2008, the implementation of a new electronic coding system enabled these releases to be correctly classified as weekend mandatory parole and mandatory reparole releases.**

COLORADO DEPARTMENT OF CORRECTIONS
ADULT INMATE RELEASES FROM PRISON

Date: 8/6/2009

Male Population Only

	Parole*						Discharge				Other				Total
	Discretionary	Mandatory	Wknd. Mand.	Mand. Repar.	Wknd. Mand. Repar.	HB 1351 Early	Sentence	H.B. 1087	Martin/Cooper	Chgs/Det.	Probation	Ct. Ord. Dsch.	Appeal Bond	Deceased	
Jul-09	184	153	127	105	77	23	32	59	4	8	14	8	0	5	799
FY 2010-Avg.	184	153	127	105	77	23	32	59	4	8	14	8	0	5	799
FY 2009-Avg.	294	167	N/A	80	N/A	N/A	31	56	5	15	10	9	0	4	786
FY 2008-Avg.	397	162	N/A	76	N/A	N/A	32	48	8	16	10	9	0	4	762
FY 2007-Avg.	359	175	N/A	77	N/A	N/A	29	45	9	15	11	8	0	4	733
FY 2006-Avg.	196	233	N/A	84	N/A	N/A	35	46	13	14	15	9	0	5	648

Female Population Only

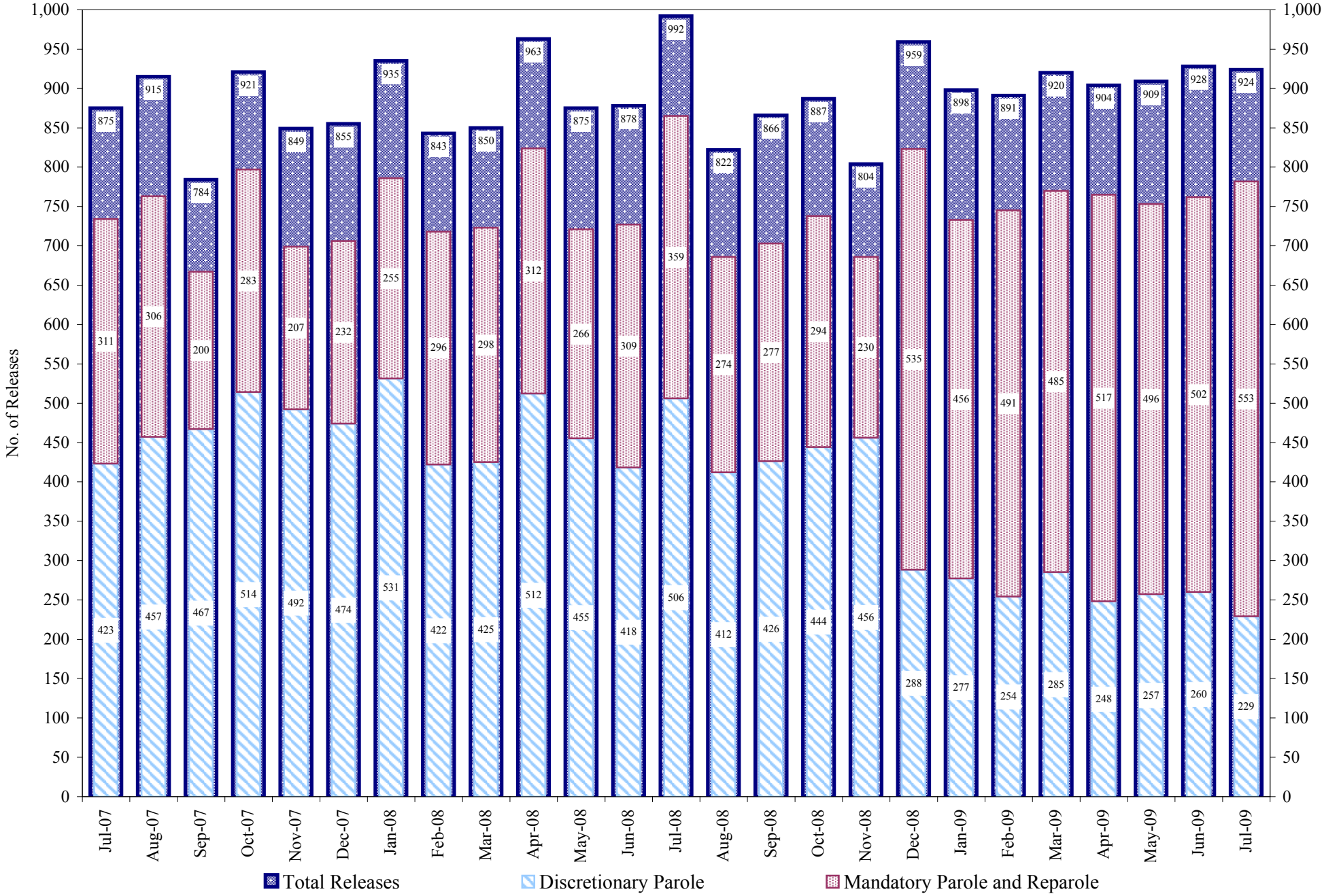
	Parole*						Discharge				Other				Total
	Discretionary	Mandatory	Wknd. Mand.	Mand. Repar.	Wknd. Mand. Repar.	HB 1351 Early	Sentence	H.B. 1087	Martin/Cooper	Chgs/Det.	Probation	Ct. Ord. Dsch.	Appeal Bond	Deceased	
Jul-09	45	18	15	14	11	10	1	9	0	0	0	2	0	0	125
FY 2010-Avg.	45	18	15	14	11	10	1	9	0	0	0	2	0	0	125
FY 2009-Avg.	49	21	N/A	13	N/A	N/A	3	7	0	2	2	1	0	0	112
FY 2008-Avg.	69	23	N/A	12	N/A	N/A	2	7	0	2	2	2	0	0	119
FY 2007-Avg.	63	23	N/A	11	N/A	N/A	2	6	0	1	2	1	0	0	109
FY 2006-Avg.	39	34	N/A	14	N/A	N/A	3	5	0	1	2	1	0	0	98

Definitions of Release Types

See previous page.

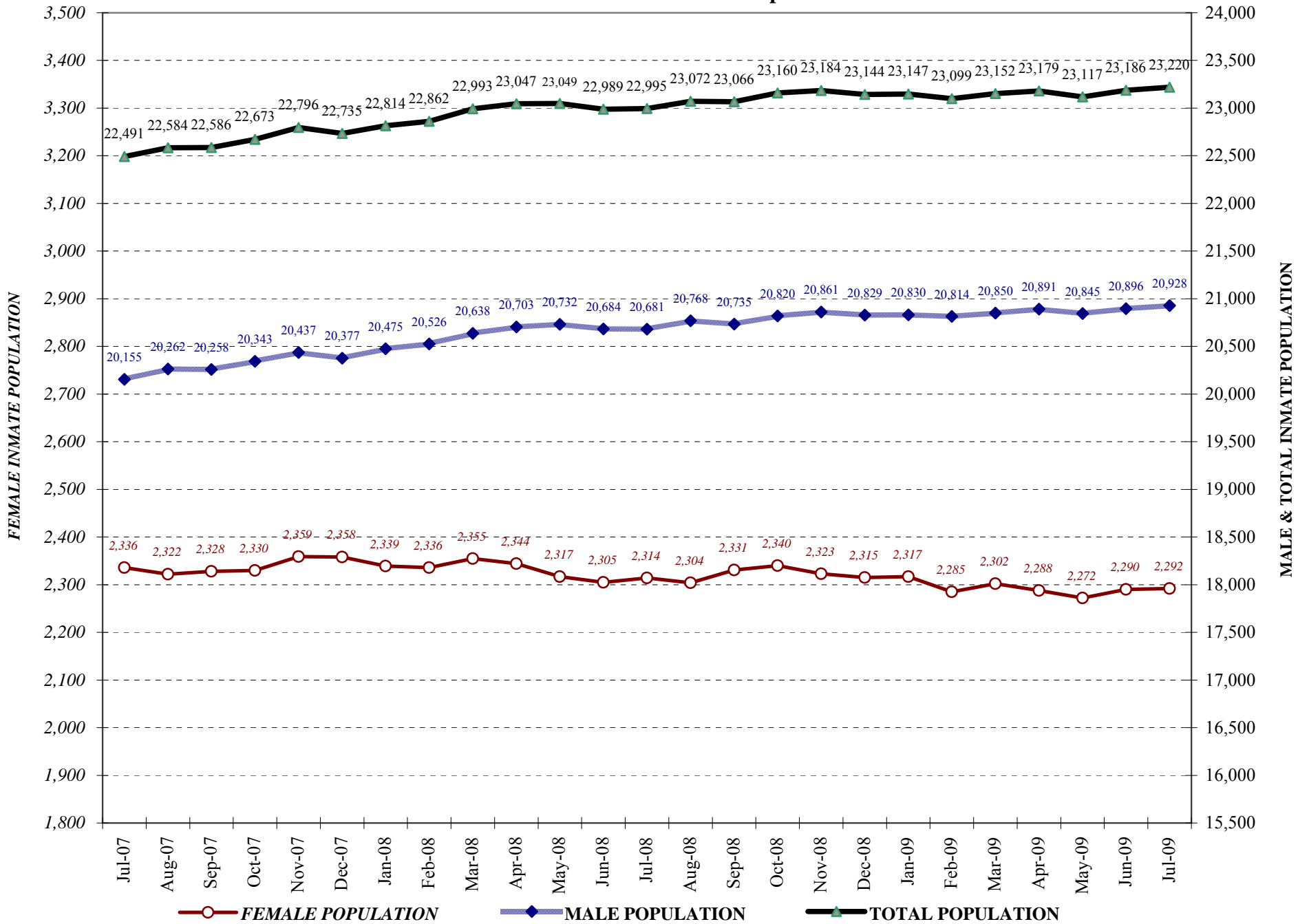
COLORADO DEPARTMENT OF CORRECTIONS

Adult Prison Releases

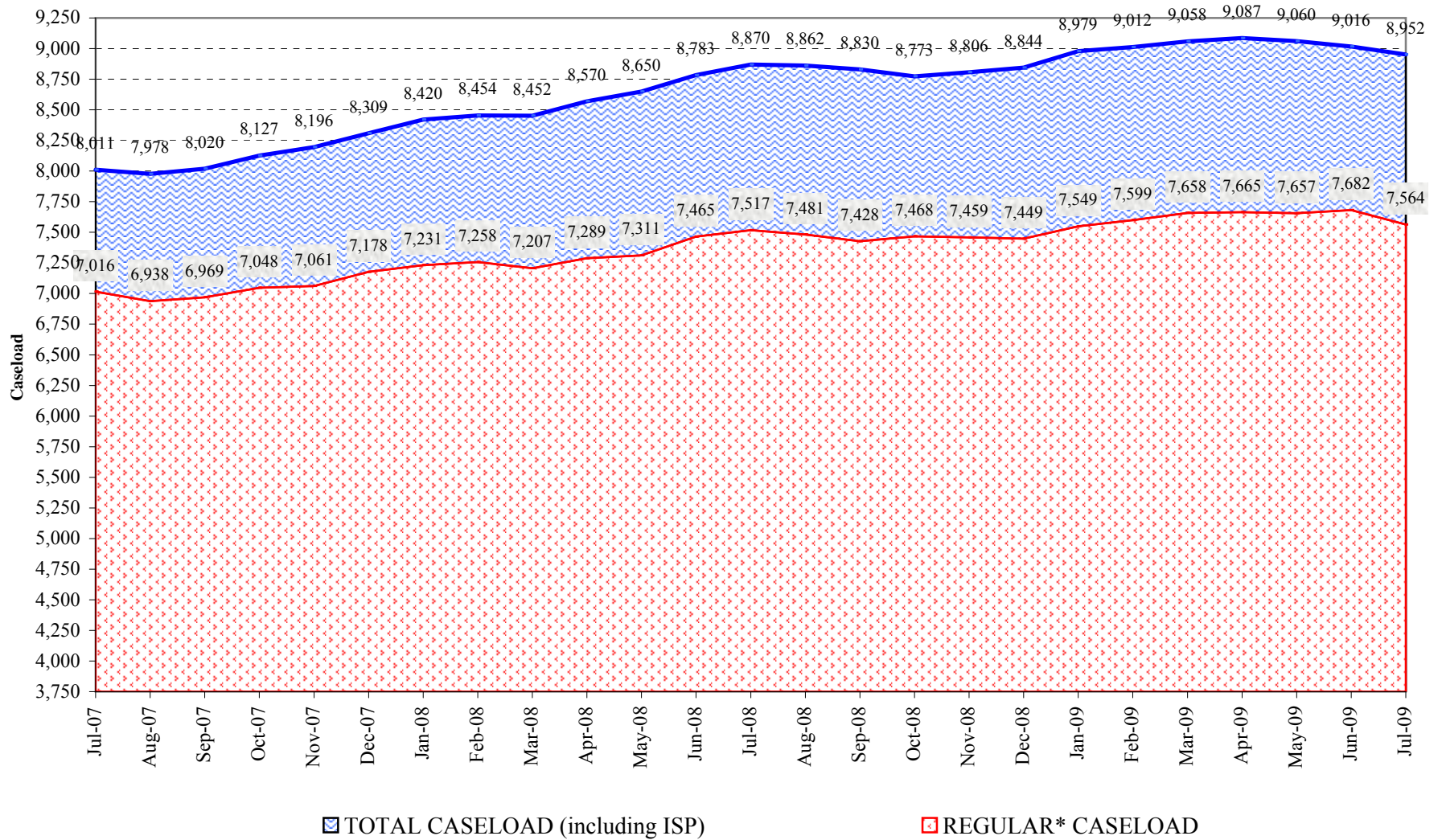


Total releases include releases to discretionary parole, mandatory parole and reparole, all types of discharges and other releases as detailed on the previous two pages.

COLORADO DEPARTMENT OF CORRECTIONS Adult Jurisdictional Inmate Population



COLORADO DEPARTMENT OF CORRECTIONS Parole Population



* Regular caseload includes interstate parole, but excludes out-of-state parolees and absconders.