

COLORADO DEPARTMENT OF CORRECTIONS
MONTHLY POPULATION AND CAPACITY REPORT
as of June 30, 2009

	6/30/2009	06/30/09			7-Jul-09
	OPERATIONAL CAPACITY*	ON-GRDS POPULATION	OFF-GRDS POPULATION	TOTAL POPULATION	OPERATIONAL CAPACITY* ON-GRDS POPULATION
COLO STATE PENITENTIARY	756	753	3	756	756 733
CENTENNIAL CORR FAC	336	311	0	311	336 299
STERLING CORR FAC	2,545	2,531	24	2,555	2,545 2,495
LIMON CORR FAC	953	940	6	946	953 931
ARK VALLEY CORR FAC	1,007	1,002	10	1,012	1,007 995
BUENA VISTA CORR FAC	926	890	20	910	926 886
BUENA VISTA MIN CTR	292	288	2	290	292 254
COLO TERR CORR FAC	944	915	9	924	936 911
FORT LYON CORR FAC	500	482	5	487	500 476
FREMONT CORR FAC	1,661	1,645	14	1,659	1,660 1,652
LA VISTA CORR FAC	519	493	4	497	519 464
ARROWHEAD CORR CTR	494	492	0	492	494 490
FOUR MILE CORR CTR	499	496	1	497	499 475
TRINIDAD CORR FAC	484	471	14	485	484 475
S.T.U. at Y.O.S.	30	17	0	17	30 27
SKYLINE CORR CTR	249	246	1	247	249 243
COLORADO CORR CTR	150	148	1	149	150 149
DELTA CORR CTR	484	480	1	481	484 459
RIFLE CORR CTR	192	191	3	194	192 170
COLO CORR ALT PROGRAM	100	80	3	83	100 89
COLO WOMEN'S CORR FAC	0	0	0	0	224 211
DENVER WOMEN'S CORR FAC	976	891	12	903	866 783
DENVER REC DIAG CTR	480	477	17	494	480 462
SAN CARLOS CORR FAC	255	246	3	249	255 244
SUBTOTAL	14,832	14,485	153	14,638	14,937 14,373
CONTRACTS:					
BENT COUNTY CORR CTR		1,374	26	1,400	1,466 924
HUERFANO COUNTY CORR CTR		0	0	0	774 765
CROWLEY COUNTY CORR FAC		1,635	19	1,654	1,720 1,629
KIT CARSON COUNTY CORR FAC		1,274	20	1,294	1,562 1,100
CHEYENNE MTN REENTRY CTR		743	8	751	672 568
HIGH PLAINS CORR FAC		279	5	284	280 238
OFF-GROUNDS POPULATION:					
ESCAPEES/WALKAWAYS			231	225	228
REVOCATIONS-JAIL				0	0
JAIL BACKLOG:					
BACKLOG LESS THAN 72 HOURS			41	49	49
BACKLOG GREATER THAN 72 HOURS (FISCAL YTD AVE =102)			42	0	0
BACKLOG-PAROLEES AWAITING TRANSFER			71	18	18
TOTAL JAIL BACKLOG			154	67	67
COUNTY JAIL CONTRACTS			15		52
COMMUNITY CORRECTIONS					
COMMUNITY					
RESIDENTIAL		1,558		1,558	1,361 1,361
NON-RESIDENTIAL			105	105	81 81
PAROLE REVOCATIONS				0	2 2
REVOKED-RET TO CUST		219	55	274	243 243
REGRESSIONS			35	35	47 47
TOTAL COMMUNITY		1,777	195	1,972	1,734 1,734
ISP					
RESIDENTIAL		757		757	904 904
NON-RESIDENTIAL			40	40	53 53
REGRESSIONS			2	2	9 9
TOTAL ISP		757	42	799	966 966
TOTAL COMM. CORRECTIONS		2,534	237	2,771	2,700 2,700
MALE POPULATION				20,896	20,684
FEMALE POPULATION				2,290	2,305
TOTAL INMATE JURISDICTIONAL POPULATION				23,186	22,989

*OPERATIONAL CAPACITY INCLUDES ALL BEDS AVAILABLE FOR USE, INCLUDING MANAGEMENT CONTROL UNITS, BUT EXCLUDES EMERGENCY DOUBLE BUNKING

COLORADO DEPARTMENT OF CORRECTIONS
MONTHLY POPULATION AND CAPACITY REPORT
as of June 30, 2009

7-Jul-09

CURRENT MONTH CHANGES IN CAPACITY:

30-Jun-09 Denver Women's Correctional Facility return 24 beds Remodel Complete

NET MONTHLY GROWTH RATE:

CURRENT MONTH 69
FISCAL YEAR-TO-DATE AVERAGE 16

YOUTHFUL OFFENDER SYSTEM

	----- 06/30/09 -----			06/30/08
	PUEBLO	COMM. CORR.	TOTAL POPULATION	TOTAL POPULATION
INTAKE/IDO	6		6	5
RFP/REMEDICATION	6		6	15
PHASE I	150		150	140
PHASE II	13		13	11
PHASE III		29	29	39
OFF GROUNDS/BACKLOG			13	9
TOTAL Y.O.S. POPULATION	175	29	217	219

	CURRENT MONTH	FISCAL YR. TO DATE
YOS ADMISSIONS	2	61
YOS RELEASES:		
COMPLETION OF SENTENCE	5	47
JUDICIAL RELEASE TO PROB/CT ORD DISCHG	0	0
JUDICIAL TRANSFER TO DOC	0	0
TERMINATION/FAILURE	0	15
DECEASED	0	1
TOTAL RELEASES	5	63

PAROLE CASELOAD

	----- 06/30/09 -----			----- 5/31/09 -----	----- 06/30/08 -----		
	DOMESTIC	INTERST PAR/PROB	TOTAL CASELOAD	DOMESTIC	TOTAL CASELOAD	DOMESTIC	TOTAL CASELOAD
DENVER REGION							
REGULAR	2,762	81	2,843	2,787	2,870	2,677	2,760
ISP	637		637	656	656	646	646
SUBTOTAL	3,399	81	3,480	3,443	3,526	3,323	3,406
NORTHEAST REGION							
REGULAR	1,993	98	2,091	1,955	2,051	2,000	2,099
ISP	318		318	342	342	274	274
SUBTOTAL	2,311	98	2,409	2,297	2,393	2,274	2,373
SOUTHEAST REGION							
REGULAR	1,899	80	1,979	1,889	1,968	1,786	1,870
ISP	281		281	297	297	273	273
SUBTOTAL	2,180	80	2,260	2,186	2,265	2,059	2,143
WESTERN REGION							
REGULAR	717	52	769	722	768	688	736
ISP	98		98	108	108	125	125
SUBTOTAL	815	52	867	830	876	813	861
TOTAL CASELOAD							
REGULAR	7,371	311	7,682	7,353	7,657	7,151	7,465
ISP	1,334		1,334	1,403	1,403	1,318	1,318
TOTAL	8,705	311	9,016	8,756	9,060	8,469	8,783
ADDITIONAL CASELOAD:							
OUT-OF-STATE PAROLEES			2,029		1,998		1,955
PAROLEE ABSCONDERS		705			726		773

COLORADO DEPARTMENT OF CORRECTIONS
ADULT INMATE JURISDICTIONAL POPULATION (1)

DATE: 7/7/2009

DATE	MALE POPULATION			FEMALE POPULATION			TOTAL POPULATION		
	Male Population	Net Change	Fiscal Y-T-D Average	Female Population	Net Change	Fiscal Y-T-D Average	Total Population	Net Change	Fiscal Y-T-D Average
06-30-09	20,896	51	18	2,290	18	-1	23,186	69	16
05-31-09	20,845	-46		2,272	-16		23,117	-62	
04-30-09	20,891	41		2,288	-14		23,179	27	
03-31-09	20,850	36		2,302	17		23,152	53	
02-28-09	20,814	-16		2,285	-32		23,099	-48	
01-31-09	20,830	1		2,317	2		23,147	3	
12-31-08	20,829	-32		2,315	-8		23,144	-40	
11-30-08	20,861	41		2,323	-17		23,184	24	
10-31-08	20,820	85		2,340	9		23,160	94	
09-30-08	20,735	-33		2,331	27		23,066	-6	
08-31-08	20,768	87		2,304	-10		23,072	77	
07-31-08	20,681	-3		2,314	9		22,995	6	
06-30-08	20,684	-48		2,305	-12		22,989	-60	
05-31-08	20,732	29		2,317	-27		23,049	2	
04-30-08	20,703	65		2,344	-11		23,047	54	
03-31-08	20,638	112		2,355	19		22,993	131	
02-29-08	20,526	51		2,336	-3		22,862	48	
01-31-08	20,475	98		2,339	-19		22,814	79	
12-31-07	20,377	-60	42	2,358	-1	-3	22,735	-61	39
11-30-07	20,437	94		2,359	29		22,796	123	
10-31-07	20,343	85		2,330	2		22,673	87	
09-30-07	20,258	-4		2,328	6		22,586	2	
08-31-07	20,262	107		2,322	-14		22,584	93	
07-31-07	20,155	-23		2,336	-5		22,491	-28	
06-30-07	20,178	41		2,341	9		22,519	50	
05-31-07	20,137	-39		2,332	-3		22,469	-42	
04-30-07	20,176	21		2,335	29		22,511	50	
03-31-07	20,155	75		2,306	-17		22,461	58	
02-28-07	20,080	7		2,323	1		22,403	8	
01-31-07	20,073	43		2,322	2		22,395	45	
12-31-06	20,030	12	32	2,320	6	10	22,350	18	42
11-30-06	20,018	44		2,314	11		22,332	55	
10-31-06	19,974	46		2,303	28		22,277	74	
09-30-06	19,928	139		2,275	33		22,203	172	
08-31-06	19,789	-34		2,242	-7		22,031	-41	
07-31-06	19,823	31		2,249	29		22,072	60	
06-30-06	19,792		97	2,220		12	22,012		109
06-30-05	18,631		68	2,073		27	20,704		95
06-30-04	17,814		49	1,755		11	19,569		60
06-30-03	17,226		57	1,620		10	18,846		67
06-30-02	16,539		87	1,506		14	18,045		101
06-30-01	15,493		63	1,340		6	16,833		70
06-30-00	14,733		99	1,266		7	15,999		106
06-30-99	13,547		75	1,179		14	14,726		89
06-30-98	12,647			1,016			13,663		

(1) Adult inmate jurisdictional population includes on-grounds, off-grounds, out-of-state, escapees, and jail backlog and excludes offenders sentenced to the Youthful Offender System (Y.O.S.).

COLORADO DEPARTMENT OF CORRECTIONS
ADULT INMATE RELEASES FROM PRISON
TOTAL Population (Male and Female)

Date: 7/7/2009

	Parole*					Discharge				Other				Total
	Discre- tionary	Mand- atory	Wknd. Mand.	Mand. Repar.	Wknd. Mand. Repar.	Sentence	H.B. 1087	Martin/ Cooper	Chgs/ Det.	Probation	Ct. Ord. Dsch.	Appeal Bond	Deceased	
Jun-09	260	198	145	87	72	30	92	6	14	13	7	0	4	928
May-09	257	178	143	93	82	43	73	6	12	11	7	0	4	909
Apr-09	248	221	148	78	70	18	74	4	15	13	11	0	4	904
Mar-09	285	190	120	89	86	29	65	9	18	10	14	0	5	920
Feb-09	254	160	172	91	68	35	68	4	12	14	9	1	3	891
Jan-09	277	172	124	80	80	38	67	4	27	7	13	0	9	898
Dec-08	288	194	172	98	71	40	56	4	7	15	11	0	3	959
Nov-08	456	144	N/A	86	N/A	37	45	5	16	7	8	0	0	804
Oct-08	444	211	N/A	83	N/A	34	51	3	25	17	13	0	6	887
Sep-08	426	184	N/A	93	N/A	35	63	6	31	12	10	1	5	866
Aug-08	412	164	N/A	110	N/A	40	59	6	15	10	4	0	2	822
Jul-08	506	233	N/A	126	N/A	30	49	6	17	15	6	0	4	992
FY 2009-Avg.	343	187	N/A	93	N/A	34	64	5	17	12	9	0	4	898
FY 2008-Avg.	466	186	N/A	88	N/A	34	56	8	17	12	11	0	4	881
FY 2007-Avg.	422	198	N/A	89	N/A	31	50	10	16	13	9	0	4	843
FY 2006-Avg.	234	266	N/A	98	N/A	38	50	13	15	16	10	0	5	746

Definitions of Release Types

Discretionary parole-Released to parole through Parole Board discretion prior to mandatory release or sentence discharge date.

Mandatory parole-Released to parole on mandatory release date.

Wknd Mand.-Mandatory releases scheduled to release on a weekend; released a few days early under Parole Board authority.

Mand. Repar.-Reparoled on specific date set by Parole Board (includes S.B. 252 reparaes). n/a - breakout not available prior to June 2004.

Wknd Mand. Repar.-Mandatory Reparole releases scheduled to release on a weekend; released a few days early under Parole Board authority.

Sentence discharge-Completion of sentence with no further supervision.

H.B. 1087 discharge-Completion of sentence with no further supervision, subject to earn time provisions of H.B. 95-1087.

Martin/ Cooper discharge-Completion of sentence with no further supervision, sex offender subject to Martin/Cooper Supreme Court decision.

Chgs/ Det. discharge-Completion of sentence, released to other law enforcement for pending charges or detainees.

Probation-Released by court to probation.

Ct. Ord. Dsch.-Released by court order.

Appeal Bond-Released by court to appeal bond.

Deceased-Offender death in prison.

***Due to the decrease in community transportation services, the Department implemented a procedural change in December 2005 with regards to releasing inmates on weekends. As a result, discretionary releases increased and mandatory releases decreased. However, beginning December 2008, the implementation of a new electronic coding system enabled these releases to be correctly classified as weekend mandatory parole and mandatory reparole releases.**

COLORADO DEPARTMENT OF CORRECTIONS
ADULT INMATE RELEASES FROM PRISON

Date: 7/7/2009

Male Population Only

	Parole*					Discharge				Other				Total
	Discre- tionary	Mand- atory	Wknd. Mand.	Mand. Repar.	Wknd. Mand. Repar.	Sentence	H.B. 1087	Martin/ Cooper	Chgs/ Det.	Probation	Ct. Ord. Dsch.	Appeal Bond	Deceased	
Jun-09	214	176	135	73	66	27	85	6	12	13	6	0	4	817
May-09	226	160	122	78	72	39	61	6	12	9	6	0	4	795
Apr-09	212	194	130	67	66	16	63	4	11	9	11	0	4	787
Mar-09	244	173	108	78	80	27	56	9	18	9	11	0	5	818
Feb-09	220	140	146	80	55	33	61	4	11	13	8	1	3	775
Jan-09	233	147	111	70	73	34	58	4	24	7	11	0	7	779
Dec-08	246	175	152	88	64	36	48	4	6	10	10	0	3	842
Nov-08	389	132	N/A	73	N/A	34	39	5	14	5	8	0	0	699
Oct-08	388	183	N/A	75	N/A	32	46	3	22	15	13	0	6	783
Sep-08	372	165	N/A	87	N/A	30	60	6	26	11	10	1	4	772
Aug-08	338	147	N/A	89	N/A	37	52	6	14	8	4	0	1	696
Jul-08	444	207	N/A	102	N/A	30	46	6	15	13	6	0	4	873
FY 2009-Avg.	294	167	N/A	80	N/A	31	56	5	15	10	9	0	4	786
FY 2008-Avg.	397	162	N/A	76	N/A	32	48	8	16	10	9	0	4	762
FY 2007-Avg.	359	175	N/A	77	N/A	29	45	9	15	11	8	0	4	733
FY 2006-Avg.	196	233	N/A	84	N/A	35	46	13	14	15	9	0	5	648

Female Population Only

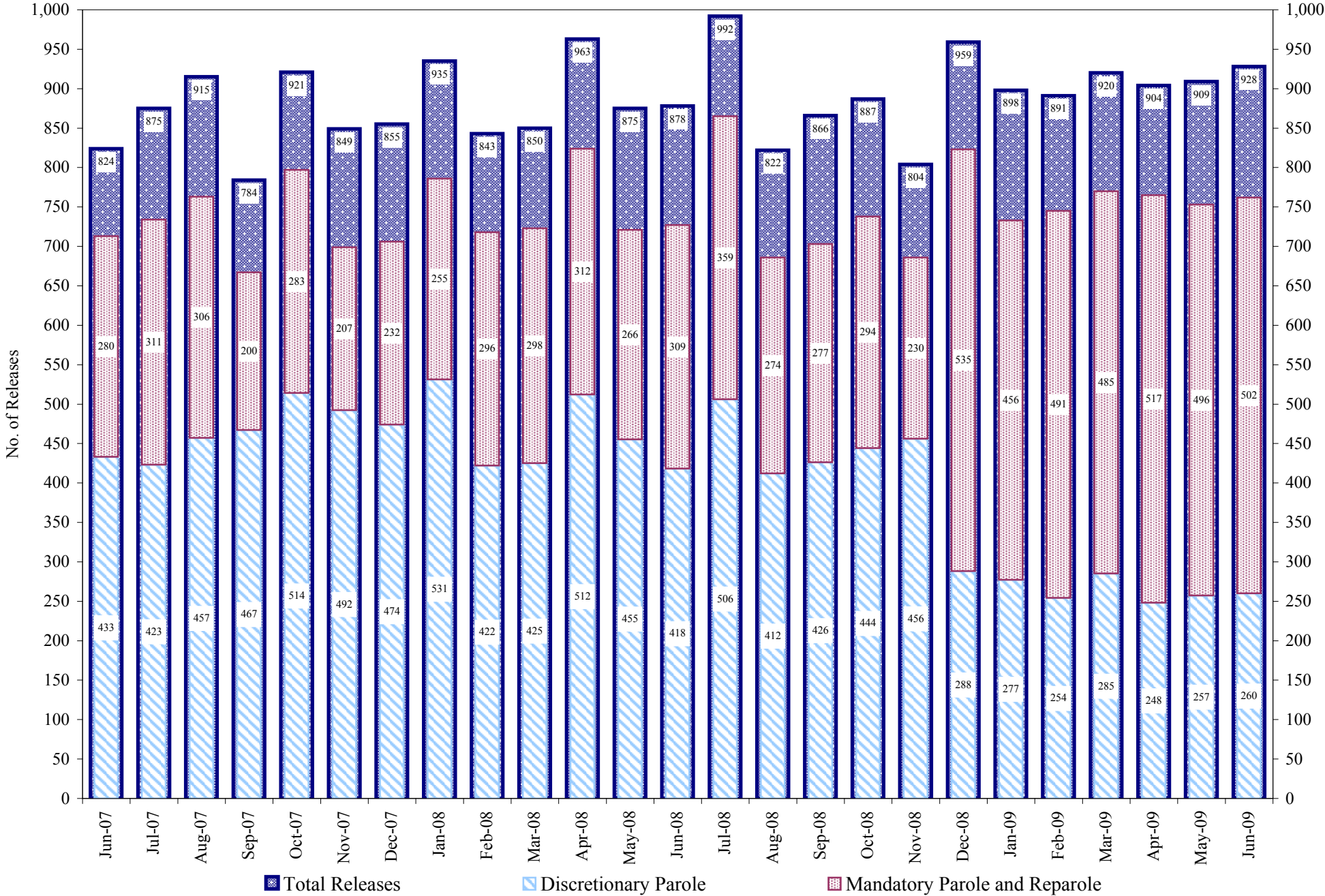
	Parole*					Discharge				Other				Total
	Discre- tionary	Mand- atory	Wknd. Mand.	Mand. Repar.	Wknd. Mand. Repar.	Sentence	H.B. 1087	Martin/ Cooper	Chgs/ Det.	Probation	Ct. Ord. Dsch.	Appeal Bond	Deceased	
Jun-09	46	22	10	14	6	3	7	0	2	0	1	0	0	111
May-09	31	18	21	15	10	4	12	0	0	2	1	0	0	114
Apr-09	36	27	18	11	4	2	11	0	4	4	0	0	0	117
Mar-09	41	17	12	11	6	2	9	0	0	1	3	0	0	102
Feb-09	34	20	26	11	13	2	7	0	1	1	1	0	0	116
Jan-09	44	25	13	10	7	4	9	0	3	0	2	0	2	119
Dec-08	42	19	20	10	7	4	8	0	1	5	1	0	0	117
Nov-08	67	12	N/A	13	N/A	3	6	0	2	2	0	0	0	105
Oct-08	56	28	N/A	8	N/A	2	5	0	3	2	0	0	0	104
Sep-08	54	19	N/A	6	N/A	5	3	0	5	1	0	0	1	94
Aug-08	74	17	N/A	21	N/A	3	7	0	1	2	0	0	1	126
Jul-08	62	26	N/A	24	N/A	0	3	0	2	2	0	0	0	119
FY 2009-Avg.	49	21	N/A	13	N/A	3	7	0	2	2	1	0	0	112
FY 2008-Avg.	69	23	N/A	12	N/A	2	7	0	2	2	2	0	0	119
FY 2007-Avg.	63	23	N/A	11	N/A	2	6	0	1	2	1	0	0	109
FY 2006-Avg.	39	34	N/A	14	N/A	3	5	0	1	2	1	0	0	98

Definitions of Release Types

See previous page.

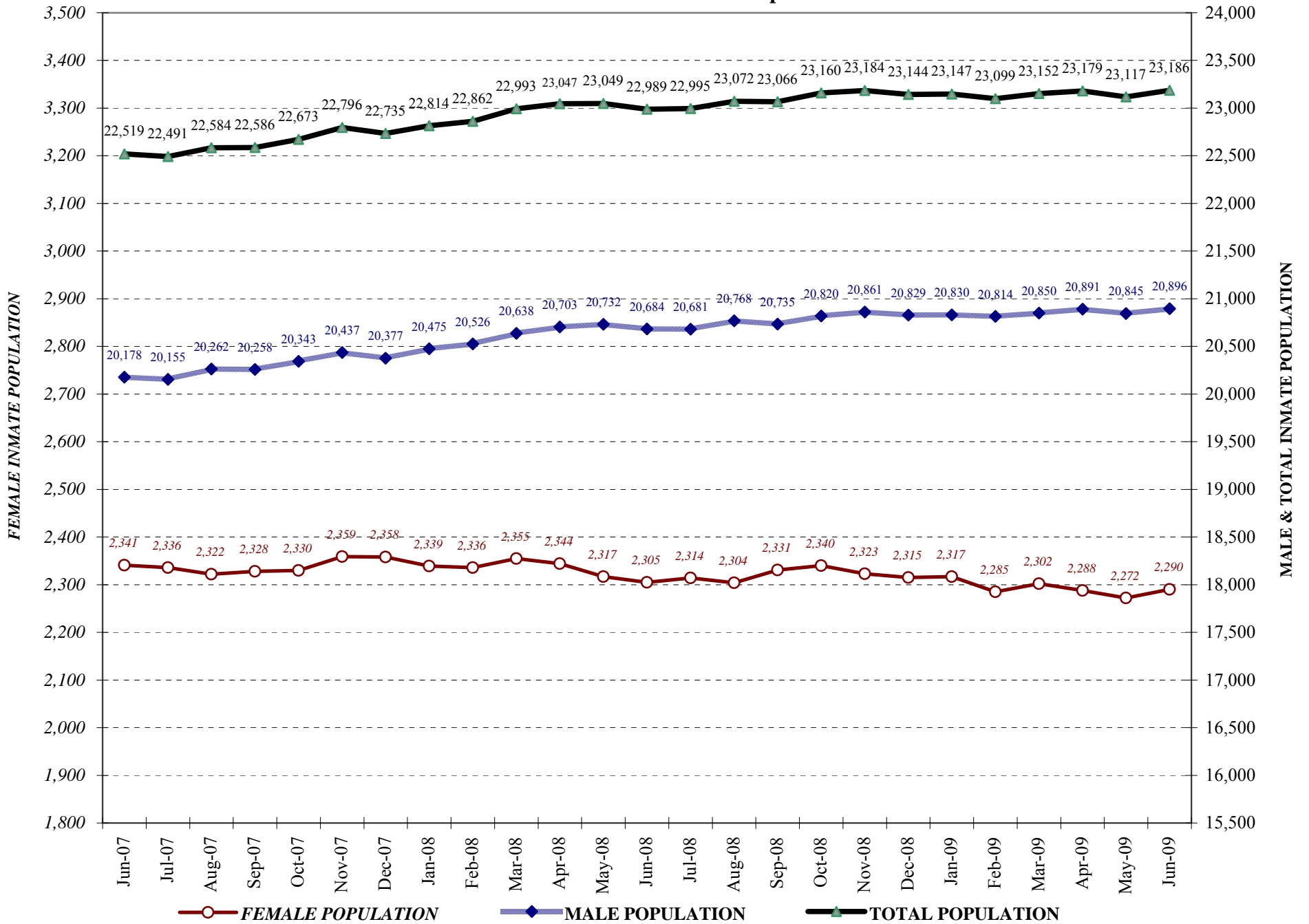
COLORADO DEPARTMENT OF CORRECTIONS

Adult Prison Releases

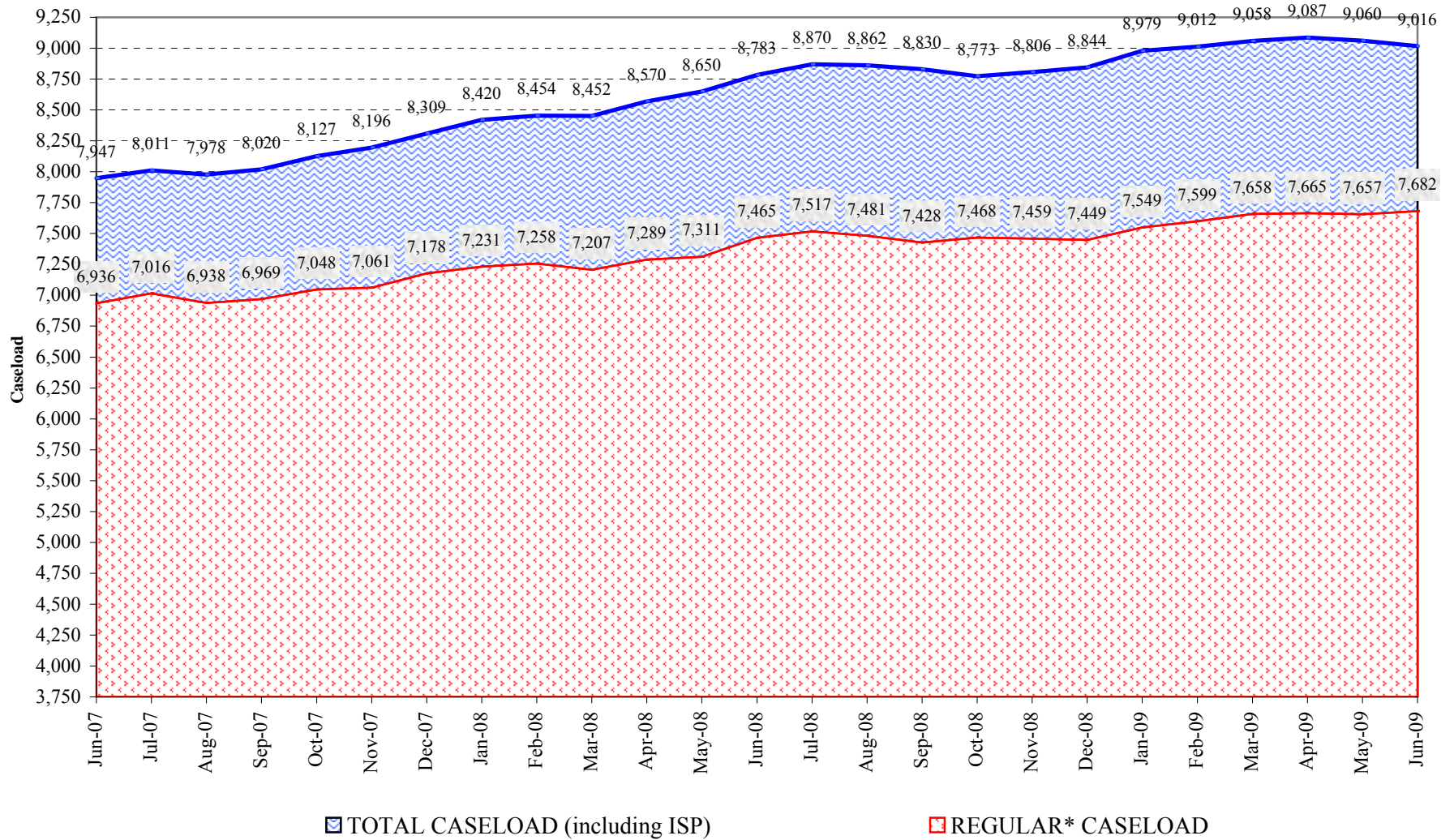


Total releases include releases to discretionary parole, mandatory parole and reparole, all types of discharges and other releases as detailed on the previous two pages.

COLORADO DEPARTMENT OF CORRECTIONS Adult Jurisdictional Inmate Population



COLORADO DEPARTMENT OF CORRECTIONS Parole Population



* Regular caseload includes interstate parole, but excludes out-of-state parolees and absconders.