

**COLORADO DEPARTMENT OF CORRECTIONS
MONTHLY POPULATION AND CAPACITY REPORT
AS OF MARCH 31, 2009**

2-Apr-09

	3/31/2009	----- 03/31/09 -----			----- 03/31/08 -----	
	OPERATIONAL CAPACITY*	ON-GRDS POPULATION	OFF-GRDS POPULATION	TOTAL POPULATION	OPERATIONAL CAPACITY*	ON-GRDS POPULATION
COLO STATE PENITENTIARY	756	748	4	752	756	746
CENTENNIAL CORR FAC	336	308	2	310	336	284
STERLING CORR FAC	2,545	2,524	26	2,550	2,545	2,468
LIMON CORR FAC	953	943	5	948	953	901
ARK VALLEY CORR FAC	1,007	1,004	6	1,010	1,007	1,003
BUENA VISTA CORR FAC	926	911	18	929	926	905
BUENA VISTA MIN CTR	292	288	7	295	292	288
COLO TERR CORR FAC	944	927	8	935	936	918
FORT LYON CORR FAC	500	485	7	492	500	485
FREMONT CORR FAC	1,661	1,639	11	1,650	1,660	1,644
LA VISTA CORR FAC	519	490	9	499	519	453
ARROWHEAD CORR CTR	494	489	1	490	494	489
FOUR MILE CORR CTR	499	495	3	498	499	495
TRINIDAD CORR FAC	484	474	13	487	484	473
S.T.U. at Y.O.S.	30	27	2	29	30	28
SKYLINE CORR CTR	249	249	0	249	249	247
COLORADO CORR CTR	150	148	2	150	150	150
DELTA CORR CTR	484	480	1	481	484	464
RIFLE CORR CTR	192	192	0	192	192	189
COLO CORR ALT PROGRAM	100	63	7	70	100	103
COLO WOMEN'S CORR FAC	224	88	1	89	224	210
DENVER WOMEN'S CORR FAC	866	848	8	856	866	808
DENVER REC DIAG CTR	480	473	15	488	480	486
SAN CARLOS CORR FAC	255	248	2	250	255	245
SUBTOTAL	14,946	14,541	158	14,699	14,937	14,482
CONTRACTS:						
BENT COUNTY CORR CTR		1,020	18	1,038	724	651
HUERFANO COUNTY CORR CTR		594	14	608	774	767
CROWLEY COUNTY CORR FAC		1,615	25	1,640	1,720	1,602
KIT CARSON COUNTY CORR FAC		1,070	9	1,079	820	745
CHEYENNE MTN REENTRY CTR		648	1	649	592	563
HIGH PLAINS CORR FAC		262	4	266	270	249
NORTH FORK OK CORR FAC				0	480	480
OFF-GROUNDS POPULATION:			229			242
ESCAPEES/WALKAWAYS				210		244
REVOCATIONS-JAIL				0		0
JAIL BACKLOG:						
BACKLOG LESS THAN 72 HOURS			0		126	
BACKLOG GREATER THAN 72 HOURS (FISCAL YTD AVE =108)			91		61	
BACKLOG-PAROLEES AWAITING TRANSFER			42		43	
TOTAL JAIL BACKLOG			133			230
COUNTY JAIL CONTRACTS			18			58
COMMUNITY CORRECTIONS						
COMMUNITY						
RESIDENTIAL		1,581		1,581	1,377	1,377
NON-RESIDENTIAL			82	82	2	2
PAROLE REVOCATIONS				0	252	252
REVOKED-RET TO CUST		222	50	272	66	66
REGRESSIONS			52	52	42	42
TOTAL COMMUNITY		1,803	184	1,987	1,739	1,739
ISP						
RESIDENTIAL		757		757	893	893
NON-RESIDENTIAL			53	53	42	42
REGRESSIONS			15	15	6	6
TOTAL ISP		757	68	825	941	941
TOTAL COMM. CORRECTIONS		2,560	252	2,812	2,680	2,680
MALE POPULATION				20,850		20,638
FEMALE POPULATION				2,302		2,355
TOTAL INMATE JURISDICTIONAL POPULATION				23,152		22,993

*OPERATIONAL CAPACITY INCLUDES ALL BEDS AVAILABLE FOR USE, INCLUDING MANAGEMENT CONTROL UNITS, BUT EXCLUDES EMERGENCY DOUBLE BUNKING

**COLORADO DEPARTMENT OF CORRECTIONS
MONTHLY POPULATION AND CAPACITY REPORT
AS OF MARCH 31, 2009**

2-Apr-09

CURRENT MONTH CHANGES IN CAPACITY:

None

NET MONTHLY GROWTH RATE:

CURRENT MONTH	53
FISCAL YEAR-TO-DATE AVERAGE	18

YOUTHFUL OFFENDER SYSTEM

	----- 03/31/09 -----			03/31/08
	PUEBLO	COMM. CORR.	TOTAL POPULATION	TOTAL POPULATION
INTAKE/IDO	6		6	9
RFP/REMEDATION	10		10	11
PHASE I	159		159	137
PHASE II	12		12	18
PHASE III		32	32	38
OFF GROUNDS/BACKLOG	2		2	3
TOTAL Y.O.S. POPULATION	189	32	221	216

	CURRENT MONTH	FISCAL YR. TO DATE
YOS ADMISSIONS	4	48
YOS RELEASES:		
COMPLETION OF SENTENCE	5	36
JUDICIAL RELEASE TO PROB/CT ORD DISCHG	0	0
JUDICIAL TRANSFER TO DOC	0	0
TERMINATION/FAILURE	0	10
DECEASED	0	0
TOTAL RELEASES	5	46

PAROLE CASELOAD

	----- 03/31/09 -----			----- 02/28/09 -----		----- 03/31/08 -----	
	DOMESTIC	INTERST PAR/PROB	TOTAL CASELOAD	DOMESTIC	TOTAL CASELOAD	DOMESTIC	TOTAL CASELOAD
DENVER REGION							
REGULAR	2,788	80	2,868	2,724	2,810	2,581	2,659
ISP	613		613	632	632	599	599
SUBTOTAL	3,401	80	3,481	3,356	3,442	3,180	3,258
NORTHEAST REGION							
REGULAR	1,966	102	2,068	1,936	2,035	1,924	2,012
ISP	352		352	354	354	277	277
SUBTOTAL	2,318	102	2,420	2,290	2,389	2,201	2,289
SOUTHEAST REGION							
REGULAR	1,847	77	1,924	1,874	1,948	1,729	1,817
ISP	321		321	312	312	264	264
SUBTOTAL	2,168	77	2,245	2,186	2,260	1,993	2,081
WESTERN REGION							
REGULAR	750	48	798	757	806	677	719
ISP	114		114	115	115	105	105
SUBTOTAL	864	48	912	872	921	782	824
TOTAL CASELOAD							
REGULAR	7,351	307	7,658	7,291	7,599	6,911	7,207
ISP	1,400		1,400	1,413	1,413	1,245	1,245
TOTAL	8,751	307	9,058	8,704	9,012	8,156	8,452
ADDITIONAL CASELOAD:							
OUT-OF-STATE PAROLEES			1,964		1,949		1,925
PAROLEE ABSCONDERS		742			782		808

COLORADO DEPARTMENT OF CORRECTIONS
ADULT INMATE JURISDICTIONAL POPULATION (1)

DATE: 4/2/2009

DATE	MALE POPULATION			FEMALE POPULATION			TOTAL POPULATION		
	Male Population	Net Change	Fiscal Y-T-D Average	Female Population	Net Change	Fiscal Y-T-D Average	Total Population	Net Change	Fiscal Y-T-D Average
03-31-09	20,850	36	18	2,302	17	0	23,152	53	18
02-28-09	20,814	-16		2,285	-32		23,099	-48	
01-31-09	20,830	1		2,317	2		23,147	3	
12-31-08	20,829	-32		2,315	-8		23,144	-40	
11-30-08	20,861	41		2,323	-17		23,184	24	
10-31-08	20,820	85		2,340	9		23,160	94	
09-30-08	20,735	-33		2,331	27		23,066	-6	
08-31-08	20,768	87		2,304	-10		23,072	77	
07-31-08	20,681	-3		2,314	9		22,995	6	
06-30-08	20,684	-48		2,305	-12		22,989	-60	
05-31-08	20,732	29		2,317	-27		23,049	2	
04-30-08	20,703	65		2,344	-11		23,047	54	
03-31-08	20,638	112		2,355	19		22,993	131	
02-29-08	20,526	51		2,336	-3		22,862	48	
01-31-08	20,475	98		2,339	-19		22,814	79	
12-31-07	20,377	-60	42	2,358	-1	-3	22,735	-61	39
11-30-07	20,437	94		2,359	29		22,796	123	
10-31-07	20,343	85		2,330	2		22,673	87	
09-30-07	20,258	-4		2,328	6		22,586	2	
08-31-07	20,262	107		2,322	-14		22,584	93	
07-31-07	20,155	-23		2,336	-5		22,491	-28	
06-30-07	20,178	41		2,341	9		22,519	50	
05-31-07	20,137	-39		2,332	-3		22,469	-42	
04-30-07	20,176	21		2,335	29		22,511	50	
03-31-07	20,155	75		2,306	-17		22,461	58	
02-28-07	20,080	7		2,323	1		22,403	8	
01-31-07	20,073	43		2,322	2		22,395	45	
12-31-06	20,030	12	32	2,320	6	10	22,350	18	42
11-30-06	20,018	44		2,314	11		22,332	55	
10-31-06	19,974	46		2,303	28		22,277	74	
09-30-06	19,928	139		2,275	33		22,203	172	
08-31-06	19,789	-34		2,242	-7		22,031	-41	
07-31-06	19,823	31		2,249	29		22,072	60	
06-30-06	19,792		97	2,220		12	22,012		109
06-30-05	18,631		68	2,073		27	20,704		95
06-30-04	17,814		49	1,755		11	19,569		60
06-30-03	17,226		57	1,620		10	18,846		67
06-30-02	16,539		87	1,506		14	18,045		101
06-30-01	15,493		63	1,340		6	16,833		70
06-30-00	14,733		99	1,266		7	15,999		106
06-30-99	13,547		75	1,179		14	14,726		89
06-30-98	12,647			1,016			13,663		

(1) Adult inmate jurisdictional population includes on-grounds, off-grounds, out-of-state, escapees, and jail backlog and excludes offenders sentenced to the Youthful Offender System (Y.O.S.).

COLORADO DEPARTMENT OF CORRECTIONS
ADULT INMATE RELEASES FROM PRISON
TOTAL Population (Male and Female)

Date: 4/2/2009

	Parole*					Discharge				Other				Total
	Discre- tionary	Mand- atory	Wknd Mand.	Mand. Repar.	Wknd Mand. Repar	Sentence	H.B. 1087	Martin/ Cooper	Chgs/ Det.	Probation	Ct. Ord. Dsch.	Appeal Bond	Deceased	
Mar-09	285	190	120	89	86	29	65	9	18	10	14	0	5	920
Feb-09	254	160	172	91	68	35	68	4	12	14	9	1	3	891
Jan-09	277	172	124	80	80	38	67	4	27	7	13	0	9	898
Dec-08	288	194	172	98	71	40	56	4	7	15	11	0	3	959
Nov-08	456	144	N/A	86	N/A	37	45	5	16	7	8	0	0	804
Oct-08	444	211	N/A	83	N/A	34	51	3	25	17	13	0	6	887
Sep-08	426	184	N/A	93	N/A	35	63	6	31	12	10	1	5	866
Aug-08	412	164	N/A	110	N/A	40	59	6	15	10	4	0	2	822
Jul-08	506	233	N/A	126	N/A	30	49	6	17	15	6	0	4	992
FYTD-Avg.	372	184	N/A	95	N/A	35	58	5	19	12	10	0	4	893
FY 2008-Avg.	466	186	N/A	88	N/A	34	56	8	17	12	11	0	4	881
FY 2007-Avg.	422	198	N/A	89	N/A	31	50	10	16	13	9	0	4	843
FY 2006-Avg.	234	266	N/A	98	N/A	38	50	13	15	16	10	0	5	746

Definitions of Release Types

Discretionary parole-Released to parole through Parole Board discretion prior to mandatory release or sentence discharge date.

Mandatory parole-Released to parole on mandatory release date.

Wknd Mand.-Mandatory releases scheduled to release on a weekend; released a few days early under Parole Board authority.

Mand. Repar-Reparoled on specific date set by Parole Board (includes S.B. 252 reparaoles). n/a - breakout not available prior to June 2004.

Wknd Mand. Repar.-Mandatory Reparole releases scheduled to release on a weekend; released a few days early under Parole Board authority.

Sentence discharge-Completion of sentence with no further supervision.

H.B. 1087 discharge-Completion of sentence with no further supervision, subject to earn time provisions of H.B. 95-1087.

Martin/ Cooper discharge-Completion of sentence with no further supervision, sex offender subject to Martin/Cooper Supreme Court decision.

Chgs/ Det. discharge-Completion of sentence, released to other law enforcement for pending charges or detainees.

Probation-Released by court to probation.

Ct. Ord. Dsch.-Released by court order.

Appeal Bond-Released by court to appeal bond.

Deceased-Offender death in prison.

***Due to the decrease in community transportation services, the Department implemented a procedural change in December 2005 with regards to releasing inmates on weekends. As a result, discretionary releases increased and mandatory releases decreased. However, beginning December 2008, the implementation of a new electronic coding system enabled these releases to be correctly classified as weekend mandatory parole and mandatory reparole releases.**

COLORADO DEPARTMENT OF CORRECTIONS
ADULT INMATE RELEASES FROM PRISON

Date: 4/2/2009

Male Population Only

	Parole*					Discharge				Other				Total
	Discre- tionary	Mand- atory	Wknd. Mand.	Mand. Repar.	Wknd. Mand. Repar.	Sentence	H.B. 1087	Martin/ Cooper	Chgs/ Det.	Probation	Ct. Ord. Dsch.	Appeal Bond	Deceased	
Mar-09	244	173	108	78	80	27	56	9	18	9	11	0	5	818
Feb-09	220	140	146	80	55	33	61	4	11	13	8	1	3	775
Jan-09	233	147	111	70	73	34	58	4	24	7	11	0	7	779
Dec-08	246	175	152	88	64	36	48	4	6	10	10	0	3	842
Nov-08	389	132	N/A	73	N/A	34	39	5	14	5	8	0	0	699
Oct-08	388	183	N/A	75	N/A	32	46	3	22	15	13	0	6	783
Sep-08	372	165	N/A	87	N/A	30	60	6	26	11	10	1	4	772
Aug-08	338	147	N/A	89	N/A	37	52	6	14	8	4	0	1	696
Jul-08	444	207	N/A	102	N/A	30	46	6	15	13	6	0	4	873
FYTD-Avg.	319	163	N/A	82	N/A	33	52	5	17	10	9	0	4	782
FY 2008-Avg.	397	162	N/A	76	N/A	32	48	8	16	10	9	0	4	762
FY 2007-Avg.	359	175	N/A	77	N/A	29	45	9	15	11	8	0	4	733
FY 2006-Avg.	196	233	N/A	84	N/A	35	46	13	14	15	9	0	5	648

Female Population Only

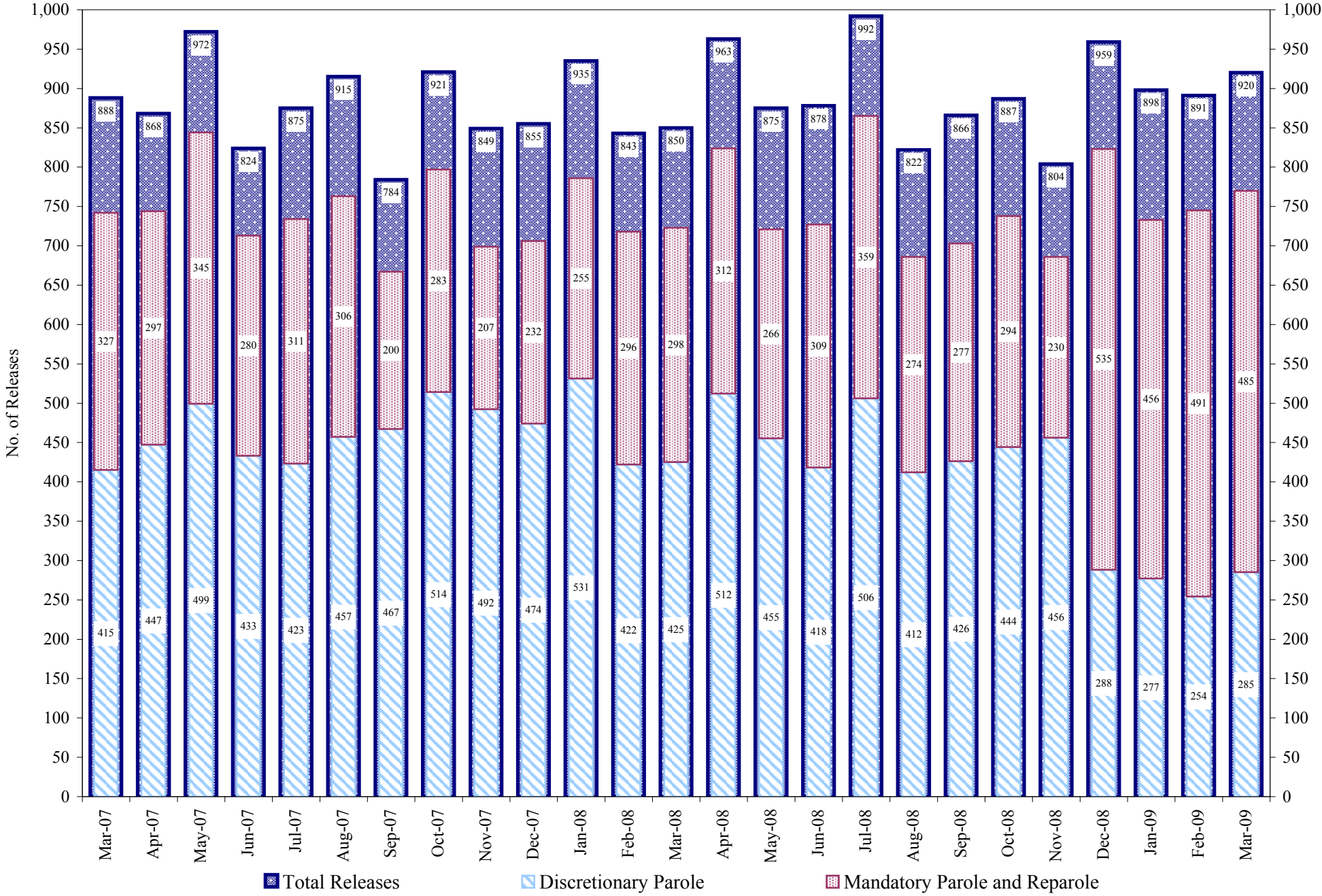
	Parole*					Discharge				Other				Total
	Discre- tionary	Mand- atory	Wknd. Mand.	Mand. Repar.	Wknd. Mand. Repar.	Sentence	H.B. 1087	Martin/ Cooper	Chgs/ Det.	Probation	Ct. Ord. Dsch.	Appeal Bond	Deceased	
Mar-09	41	17	12	11	6	2	9	0	0	1	3	0	0	102
Feb-09	34	20	26	11	13	2	7	0	1	1	1	0	0	116
Jan-09	44	25	13	10	7	4	9	0	3	0	2	0	2	119
Dec-08	42	19	20	10	7	4	8	0	1	5	1	0	0	117
Nov-08	67	12	N/A	13	N/A	3	6	0	2	2	0	0	0	105
Oct-08	56	28	N/A	8	N/A	2	5	0	3	2	0	0	0	104
Sep-08	54	19	N/A	6	N/A	5	3	0	5	1	0	0	1	94
Aug-08	74	17	N/A	21	N/A	3	7	0	1	2	0	0	1	126
Jul-08	62	26	N/A	24	N/A	0	3	0	2	2	0	0	0	119
FYTD-Avg.	53	20	N/A	13	N/A	3	6	0	2	2	1	0	0	111
FY 2008-Avg.	69	23	N/A	12	N/A	2	7	0	2	2	2	0	0	119
FY 2007-Avg.	63	23	N/A	11	N/A	2	6	0	1	2	1	0	0	109
FY 2006-Avg.	39	34	N/A	14	N/A	3	5	0	1	2	1	0	0	98

Definitions of Release Types

See previous page.

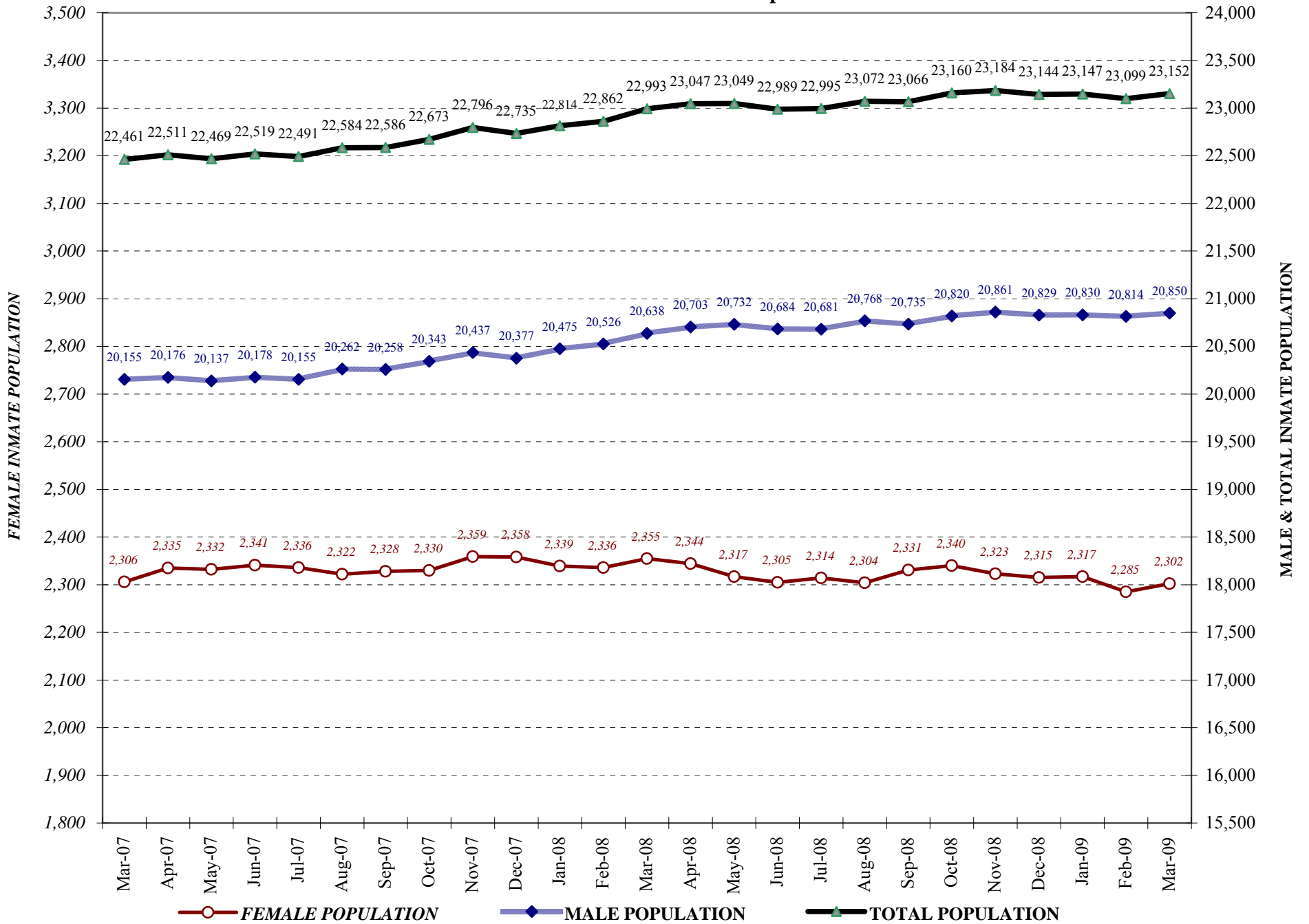
COLORADO DEPARTMENT OF CORRECTIONS

Adult Prison Releases

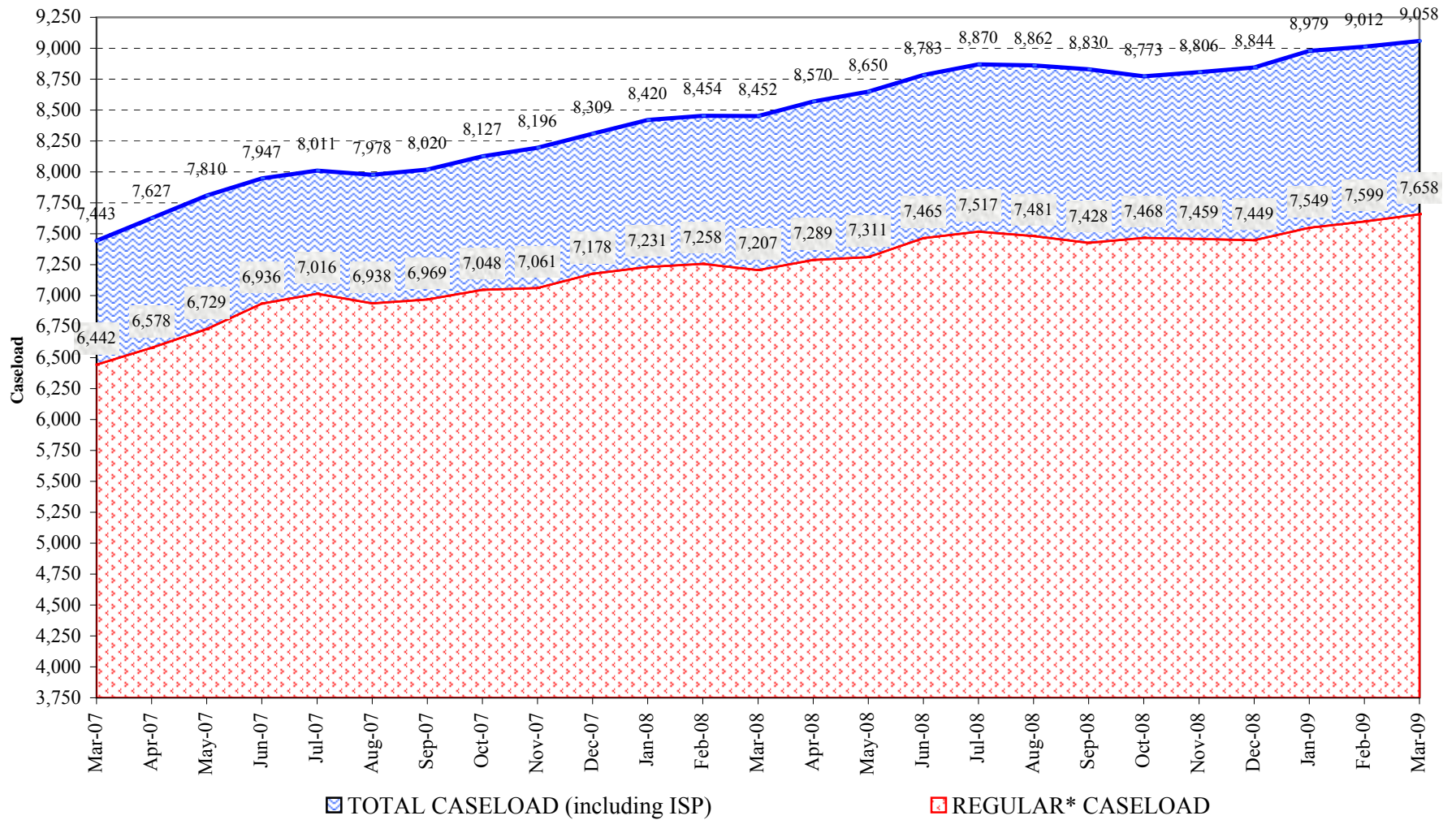


Total releases include releases to discretionary parole, mandatory parole and reparole, all types of discharges and other releases as detailed on the previous two pages.

COLORADO DEPARTMENT OF CORRECTIONS Adult Jurisdiction Inmate Population



COLORADO DEPARTMENT OF CORRECTIONS Parole Population



* Regular caseload includes interstate parole, but excludes out-of-state parolees and absconders.