

**COLORADO DEPARTMENT OF CORRECTIONS
MONTHLY POPULATION AND CAPACITY REPORT
AS OF FEBRUARY 28, 2009**

	2/28/2009	02/28/09			4-Mar-09	
	OPERATIONAL CAPACITY*	ON-GRDS POPULATION	OFF-GRDS POPULATION	TOTAL POPULATION	OPERATIONAL CAPACITY*	ON-GRDS POPULATION
COLO STATE PENITENTIARY	756	744	6	750	756	747
CENTENNIAL CORR FAC	336	297	1	298	336	302
STERLING CORR FAC	2,545	2,519	11	2,530	2,545	2,480
LIMON CORR FAC	953	941	9	950	953	888
ARK VALLEY CORR FAC	1,007	999	14	1,013	1,007	1,006
BUENA VISTA CORR FAC	926	919	13	932	926	906
BUENA VISTA MIN CTR	292	283	5	288	292	286
COLO TERR CORR FAC	944	934	11	945	936	926
FORT LYON CORR FAC	500	493	7	500	500	480
FREMONT CORR FAC	1,661	1,629	13	1,642	1,660	1,651
LA VISTA CORR FAC	519	448	10	458	519	468
ARROWHEAD CORR CTR	494	492	0	492	494	490
FOUR MILE CORR CTR	499	493	4	497	499	493
TRINIDAD CORR FAC	484	480	6	486	484	475
S.T.U. at Y.O.S.	30	21	2	23	30	25
SKYLINE CORR CTR	249	247	1	248	249	244
COLORADO CORR CTR	150	135	2	137	150	145
DELTA CORR CTR	484	431	2	433	484	477
RIFLE CORR CTR	192	191	1	192	192	185
COLO CORR ALT PROGRAM	100	71	5	76	100	103
COLO WOMEN'S CORR FAC	224	183	1	184	224	217
DENVER WOMEN'S CORR FAC	866	799	7	806	866	764
DENVER REC DIAG CTR	480	467	12	479	480	464
SAN CARLOS CORR FAC	255	245	5	250	255	249
SUBTOTAL	14,946	14,461	148	14,609	14,937	14,471
CONTRACTS:						
BENT COUNTY CORR CTR		1,012	21	1,033	724	620
HUERFANO COUNTY CORR CTR		642	10	652	774	689
CROWLEY COUNTY CORR FAC		1,653	21	1,674	1,720	1,546
KIT CARSON COUNTY CORR FAC		1,083	11	1,094	820	731
CHEYENNE MTN REENTRY CTR		656	1	657	592	590
HIGH PLAINS CORR FAC		252	2	254	270	241
NORTH FORK OK CORR FAC				0	480	480
OFF-GROUNDS POPULATION:			214			278
ESCAPEES/WALKAWAYS				216		244
REVOCATIONS-JAIL				0		0
JAIL BACKLOG:						
BACKLOG LESS THAN 72 HOURS			0		126	
BACKLOG GREATER THAN 72 HOURS (FISCAL YTD AVE =112)			58		64	
BACKLOG-PAROLEES AWAITING TRANSFER			22		42	
TOTAL JAIL BACKLOG			80			232
COUNTY JAIL CONTRACTS			22			50
COMMUNITY CORRECTIONS						
COMMUNITY						
RESIDENTIAL		1,585		1,585	1,377	1,377
NON-RESIDENTIAL			86	86	1	1
PAROLE REVOCATIONS				0	259	259
REVOKED-RET TO CUST		211	49	260	53	53
REGRESSIONS			36	36	60	60
TOTAL COMMUNITY		1,796	171	1,967	1,750	1,750
ISP						
RESIDENTIAL		779		779	884	884
NON-RESIDENTIAL			58	58	46	46
REGRESSIONS			4	4	10	10
TOTAL ISP		779	62	841	940	940
TOTAL COMM. CORRECTIONS		2,575	233	2,808	2,690	2,690
MALE POPULATION				20,814		20,526
FEMALE POPULATION				2,285		2,336
TOTAL INMATE JURISDICTIONAL POPULATION				23,099		22,862

*OPERATIONAL CAPACITY INCLUDES ALL BEDS AVAILABLE FOR USE, INCLUDING MANAGEMENT CONTROL UNITS, BUT EXCLUDES EMERGENCY DOUBLE BUNKING

**COLORADO DEPARTMENT OF CORRECTIONS
MONTHLY POPULATION AND CAPACITY REPORT
AS OF FEBRUARY 28, 2009**

4-Mar-09

CURRENT MONTH CHANGES IN CAPACITY:

None

NET MONTHLY GROWTH RATE:

CURRENT MONTH	-48
FISCAL YEAR-TO-DATE AVERAGE	14

YOUTHFUL OFFENDER SYSTEM

	----- 02/28/09 -----			02/29/08
	PUEBLO	COMM. CORR.	TOTAL POPULATION	TOTAL POPULATION
INTAKE/IDO	9		9	1
RFP/REMEDICATION	13		13	8
PHASE I	154		154	156
PHASE II	6		6	9
PHASE III		35	35	32
OFF GROUNDS/BACKLOG	6		6	8
TOTAL Y.O.S. POPULATION	188	35	223	214

	CURRENT MONTH	FISCAL YR. TO DATE
YOS ADMISSIONS	9	44
YOS RELEASES:		
COMPLETION OF SENTENCE	6	31
JUDICIAL RELEASE TO PROB/CT ORD DISCHG	0	0
JUDICIAL TRANSFER TO DOC	0	0
TERMINATION/FAILURE	2	9
DECEASED	0	0
TOTAL RELEASES	8	40

PAROLE CASELOAD

	----- 02/28/09 -----			----- 01/31/09 -----		----- 02/29/08 -----	
	DOMESTIC	INTERST PAR/PROB	TOTAL CASELOAD	DOMESTIC	TOTAL CASELOAD	DOMESTIC	TOTAL CASELOAD
DENVER REGION							
REGULAR	2,724	86	2,810	2,726	2,809	2,591	2,674
ISP	632		632	645	645	566	566
SUBTOTAL	3,356	86	3,442	3,371	3,454	3,157	3,240
NORTHEAST REGION							
REGULAR	1,936	99	2,035	1,907	2,005	1,931	2,019
ISP	354		354	358	358	280	280
SUBTOTAL	2,290	99	2,389	2,265	2,363	2,211	2,299
SOUTHEAST REGION							
REGULAR	1,874	74	1,948	1,858	1,935	1,758	1,847
ISP	312		312	310	310	249	249
SUBTOTAL	2,186	74	2,260	2,168	2,245	2,007	2,096
WESTERN REGION							
REGULAR	757	49	806	750	800	675	718
ISP	115		115	117	117	101	101
SUBTOTAL	872	49	921	867	917	776	819
TOTAL CASELOAD							
REGULAR	7,291	308	7,599	7,241	7,549	6,955	7,258
ISP	1,413		1,413	1,430	1,430	1,196	1,196
TOTAL	8,704	308	9,012	8,671	8,979	8,151	8,454
ADDITIONAL CASELOAD:							
OUT-OF-STATE PAROLEES			1,949		1,919		1,913
PAROLEE ABSCONDERS	782				804		815

COLORADO DEPARTMENT OF CORRECTIONS
ADULT INMATE JURISDICTIONAL POPULATION (1)

DATE: 3/4/2009

DATE	MALE POPULATION			FEMALE POPULATION			TOTAL POPULATION		
	Male Population	Net Change	Fiscal Y-T-D Average	Female Population	Net Change	Fiscal Y-T-D Average	Total Population	Net Change	Fiscal Y-T-D Average
02-28-09	20,814	-16	16	2,285	-32	-3	23,099	-48	14
01-31-09	20,830	1		2,317	2		23,147	3	
12-31-08	20,829	-32		2,315	-8		23,144	-40	
11-30-08	20,861	41		2,323	-17		23,184	24	
10-31-08	20,820	85		2,340	9		23,160	94	
09-30-08	20,735	-33		2,331	27		23,066	-6	
08-31-08	20,768	87		2,304	-10		23,072	77	
07-31-08	20,681	-3		2,314	9		22,995	6	
06-30-08	20,684	-48		2,305	-12		22,989	-60	
05-31-08	20,732	29		2,317	-27		23,049	2	
04-30-08	20,703	65		2,344	-11		23,047	54	
03-31-08	20,638	112		2,355	19		22,993	131	
02-29-08	20,526	51		2,336	-3		22,862	48	
01-31-08	20,475	98		2,339	-19		22,814	79	
12-31-07	20,377	-60	42	2,358	-1	-3	22,735	-61	39
11-30-07	20,437	94		2,359	29		22,796	123	
10-31-07	20,343	85		2,330	2		22,673	87	
09-30-07	20,258	-4		2,328	6		22,586	2	
08-31-07	20,262	107		2,322	-14		22,584	93	
07-31-07	20,155	-23		2,336	-5		22,491	-28	
06-30-07	20,178	41		2,341	9		22,519	50	
05-31-07	20,137	-39		2,332	-3		22,469	-42	
04-30-07	20,176	21		2,335	29		22,511	50	
03-31-07	20,155	75		2,306	-17		22,461	58	
02-28-07	20,080	7		2,323	1		22,403	8	
01-31-07	20,073	43		2,322	2		22,395	45	
12-31-06	20,030	12	32	2,320	6	10	22,350	18	42
11-30-06	20,018	44		2,314	11		22,332	55	
10-31-06	19,974	46		2,303	28		22,277	74	
09-30-06	19,928	139		2,275	33		22,203	172	
08-31-06	19,789	-34		2,242	-7		22,031	-41	
07-31-06	19,823	31		2,249	29		22,072	60	
06-30-06	19,792		97	2,220		12	22,012		109
06-30-05	18,631		68	2,073		27	20,704		95
06-30-04	17,814		49	1,755		11	19,569		60
06-30-03	17,226		57	1,620		10	18,846		67
06-30-02	16,539		87	1,506		14	18,045		101
06-30-01	15,493		63	1,340		6	16,833		70
06-30-00	14,733		99	1,266		7	15,999		106
06-30-99	13,547		75	1,179		14	14,726		89
06-30-98	12,647			1,016			13,663		

(1) Adult inmate jurisdictional population includes on-grounds, off-grounds, out-of-state, escapees, and jail backlog and excludes offenders sentenced to the Youthful Offender System (Y.O.S.).

COLORADO DEPARTMENT OF CORRECTIONS
ADULT INMATE RELEASES FROM PRISON
TOTAL Population (Male and Female)

Date: 3/20/2009

	Parole*					Discharge				Other				Total
	Discre- tionary	Mand- atory	Wknd. Mand.	Mand. Repar.	Wknd. Mand. Repar.	Sentence	H.B. 1087	Martin/ Cooper	Chgs/ Det.	Probation	Ct. Ord. Dsch.	Appeal Bond	Deceased	
Feb-09	254	160	172	91	68	35	68	4	12	14	9	1	3	891
Jan-09	277	172	124	80	80	38	67	4	27	7	13	0	9	898
Dec-08	288	194	172	98	71	40	56	4	7	15	11	0	3	959
Nov-08	456	144	N/A	86	N/A	37	45	5	16	7	8	0	0	804
Oct-08	444	211	N/A	83	N/A	34	51	3	25	17	13	0	6	887
Sep-08	426	184	N/A	93	N/A	35	63	6	31	12	10	1	5	866
Aug-08	412	164	N/A	110	N/A	40	59	6	15	10	4	0	2	822
Jul-08	506	233	N/A	126	N/A	30	49	6	17	15	6	0	4	992
FYTD-Avg.	383	183	N/A	96	N/A	36	57	5	19	12	9	0	4	890
FY 2008-Avg.	466	186	N/A	88	N/A	34	56	8	17	12	11	0	4	881
FY 2007-Avg.	422	198	N/A	89	N/A	31	50	10	16	13	9	0	4	843
FY 2006-Avg.	234	266	N/A	98	N/A	38	50	13	15	16	10	0	5	746

Definitions of Release Types

Discretionary parole-Released to parole through Parole Board discretion prior to mandatory release or sentence discharge date.

Mandatory parole-Released to parole on mandatory release date.

Wknd Mand.-Mandatory releases scheduled to release on a weekend; released a few days early under Parole Board authority.

Mand. Repar-Reparoled on specific date set by Parole Board (includes S.B. 252 reparoles). n/a - breakout not available prior to June 2004.

Wknd Mand. Repar.-Mandatory Reparole releases scheduled to release on a weekend; released a few days early under Parole Board authority.

Sentence discharge-Completion of sentence with no further supervision.

H.B. 1087 discharge-Completion of sentence with no further supervision, subject to earn time provisions of H.B. 95-1087.

Martin/ Cooper discharge-Completion of sentence with no further supervision, sex offender subject to Martin/Cooper Supreme Court decision.

Chgs/ Det. discharge-Completion of sentence, released to other law enforcement for pending charges or detainees.

Probation-Released by court to probation.

Ct. Ord. Dsch.-Released by court order.

Appeal Bond-Released by court to appeal bond.

Deceased-Offender death in prison.

***Due to the decrease in community transportation services, the Department implemented a procedural change in December 2005 with regards to releasing inmates on weekends. As a result, discretionary releases increased and mandatory releases decreased. However, beginning December 2008, the implementation of a new electronic coding system enabled these releases to be correctly classified as weekend mandatory parole and mandatory reparole releases.**

COLORADO DEPARTMENT OF CORRECTIONS
ADULT INMATE RELEASES FROM PRISON

Date: 3/20/2009

Male Population Only

	Parole*					Discharge				Other				Total
	Discre- tionary	Mand- atory	Wknd. Mand.	Mand. Repar.	Wknd. Mand. Repar.	Sentence	H.B. 1087	Martin/ Cooper	Chgs/ Det.	Probation	Ct. Ord. Dsch.	Appeal Bond	Deceased	
Feb-09	220	140	146	80	55	33	61	4	11	13	8	1	3	775
Jan-09	233	147	111	70	73	34	58	4	24	7	11	0	7	779
Dec-08	246	175	152	88	64	36	48	4	6	10	10	0	3	842
Nov-08	389	132	N/A	73	N/A	34	39	5	14	5	8	0	0	699
Oct-08	388	183	N/A	75	N/A	32	46	3	22	15	13	0	6	783
Sep-08	372	165	N/A	87	N/A	30	60	6	26	11	10	1	4	772
Aug-08	338	147	N/A	89	N/A	37	52	6	14	8	4	0	1	696
Jul-08	444	207	N/A	102	N/A	30	46	6	15	13	6	0	4	873
FYTD-Avg.	329	162	N/A	83	N/A	33	51	5	17	10	9	0	4	777
FY 2008-Avg.	397	162	N/A	76	N/A	32	48	8	16	10	9	0	4	762
FY 2007-Avg.	359	175	N/A	77	N/A	29	45	9	15	11	8	0	4	733
FY 2006-Avg.	196	233	N/A	84	N/A	35	46	13	14	15	9	0	5	648

Female Population Only

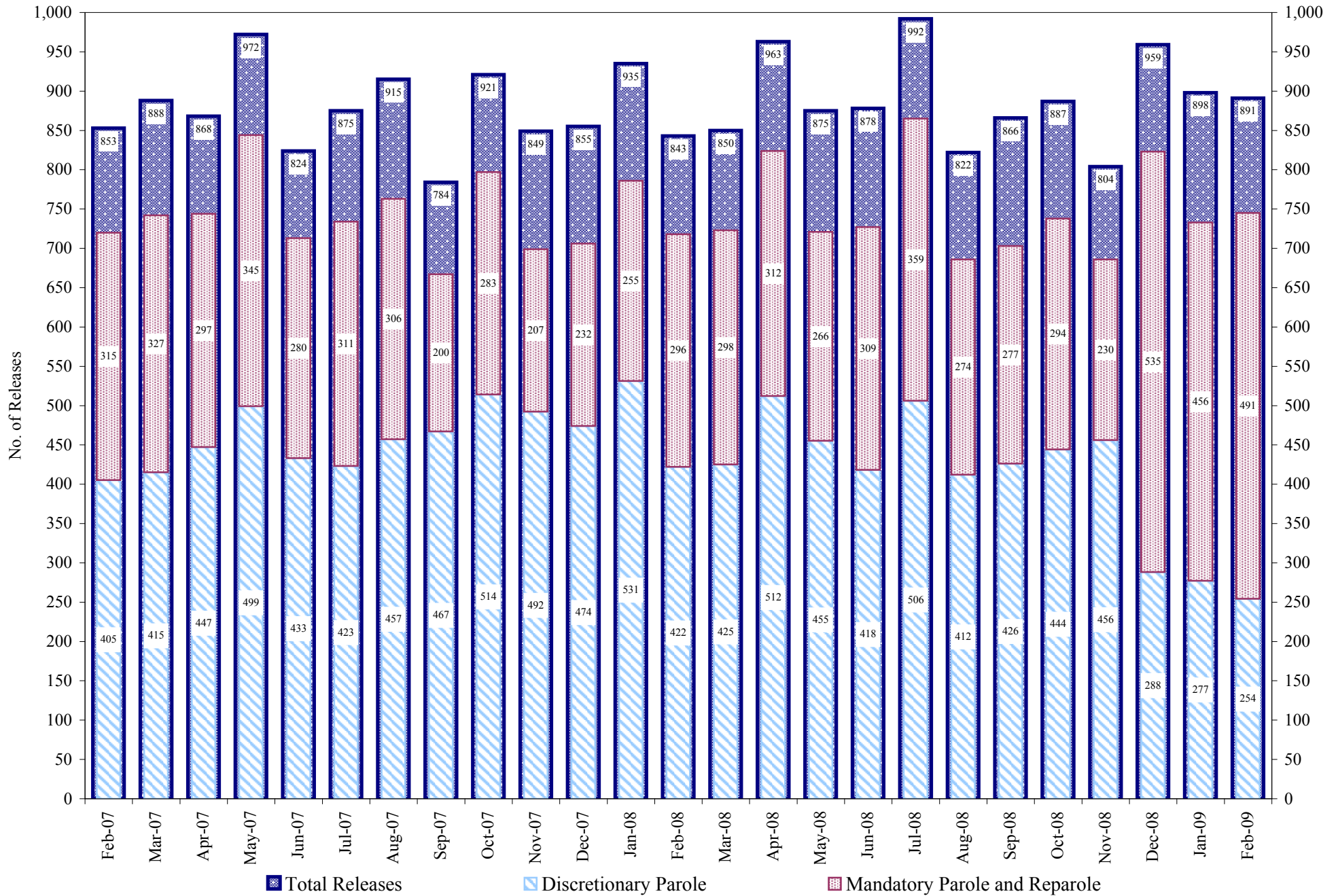
	Parole*					Discharge				Other				Total
	Discre- tionary	Mand- atory	Wknd. Mand.	Mand. Repar.	Wknd. Mand. Repar.	Sentence	H.B. 1087	Martin/ Cooper	Chgs/ Det.	Probation	Ct. Ord. Dsch.	Appeal Bond	Deceased	
Feb-09	34	20	26	11	13	2	7	0	1	1	1	0	0	116
Jan-09	44	25	13	10	7	4	9	0	3	0	2	0	2	119
Dec-08	42	19	20	10	7	4	8	0	1	5	1	0	0	117
Nov-08	67	12	N/A	13	N/A	3	6	0	2	2	0	0	0	105
Oct-08	56	28	N/A	8	N/A	2	5	0	3	2	0	0	0	104
Sep-08	54	19	N/A	6	N/A	5	3	0	5	1	0	0	1	94
Aug-08	74	17	N/A	21	N/A	3	7	0	1	2	0	0	1	126
Jul-08	62	26	N/A	24	N/A	0	3	0	2	2	0	0	0	119
FYTD-Avg.	54	21	N/A	13	N/A	3	6	0	2	2	1	0	1	113
FY 2008-Avg.	69	23	N/A	12	N/A	2	7	0	2	2	2	0	0	119
FY 2007-Avg.	63	23	N/A	11	N/A	2	6	0	1	2	1	0	0	109
FY 2006-Avg.	39	34	N/A	14	N/A	3	5	0	1	2	1	0	0	98

Definitions of Release Types

See previous page.

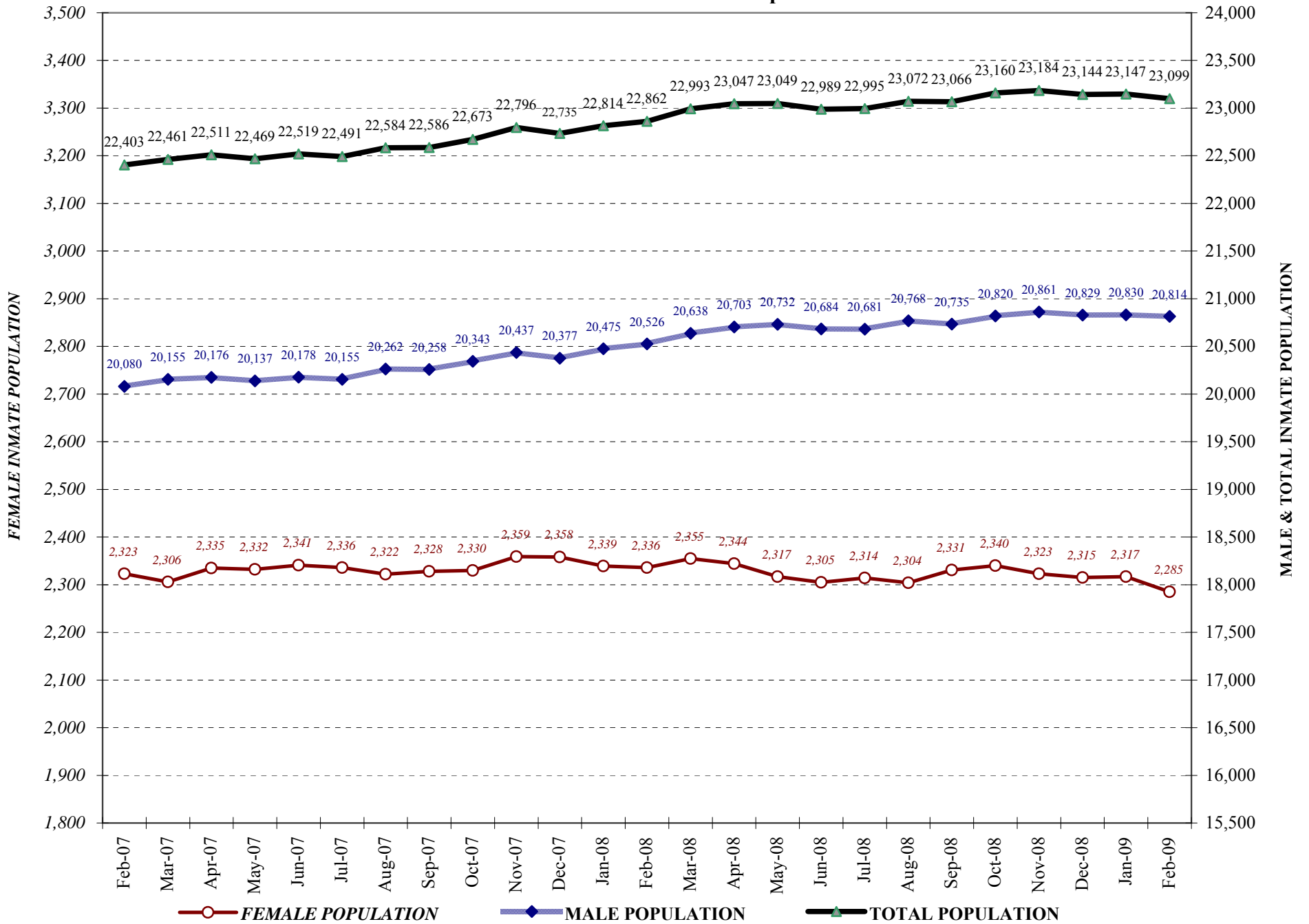
COLORADO DEPARTMENT OF CORRECTIONS

Adult Prison Releases

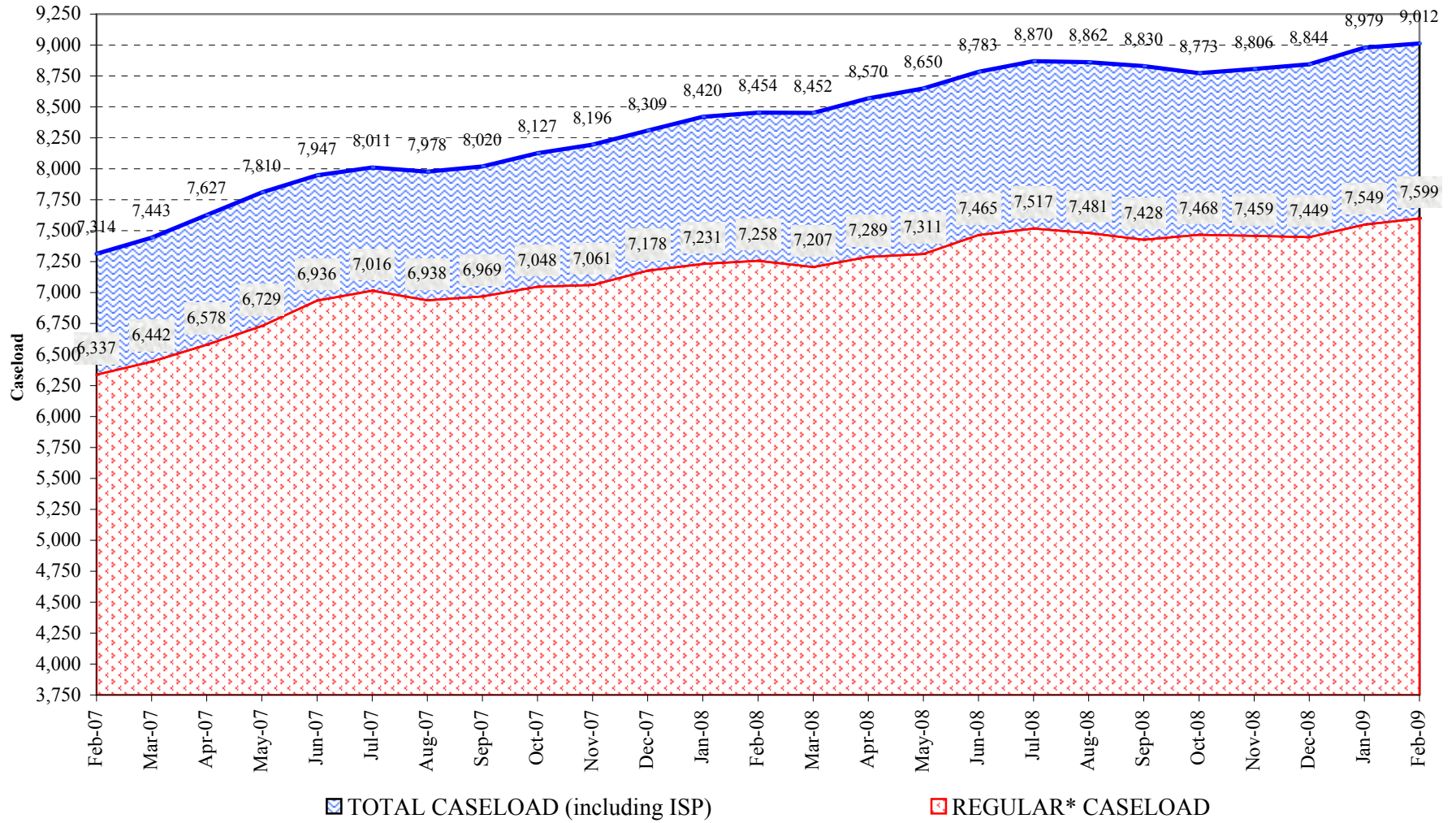


Total releases include releases to discretionary parole, mandatory parole and reparole, all types of discharges and other releases as detailed on the previous two pages.

COLORADO DEPARTMENT OF CORRECTIONS Adult Jurisdictional Inmate Population



COLORADO DEPARTMENT OF CORRECTIONS Parole Population



* Regular caseload includes interstate parole, but excludes out-of-state parolees and absconders.