

**COLORADO DEPARTMENT OF CORRECTIONS
MONTHLY POPULATION AND CAPACITY REPORT
AS OF JANUARY 31, 2009**

3-Feb-09

	1/31/2009	01/31/09			01/31/08	
	OPERATIONAL CAPACITY*	ON-GRDS POPULATION	OFF-GRDS POPULATION	TOTAL POPULATION	OPERATIONAL CAPACITY*	ON-GRDS POPULATION
COLO STATE PENITENTIARY	756	754	4	758	756	747
CENTENNIAL CORR FAC	336	304	2	306	336	299
STERLING CORR FAC	2,545	2,520	20	2,540	2,545	2,503
LIMON CORR FAC	953	944	12	956	953	910
ARK VALLEY CORR FAC	1,007	1,005	6	1,011	1,007	994
BUENA VISTA CORR FAC	926	923	24	947	926	917
BUENA VISTA MIN CTR	292	286	5	291	292	286
COLO TERR CORR FAC	944	925	14	939	936	904
FORT LYON CORR FAC	500	485	11	496	500	479
FREMONT CORR FAC	1,661	1,643	11	1,654	1,660	1,644
LA VISTA CORR FAC	519	442	7	449	519	470
ARROWHEAD CORR CTR	494	491	5	496	494	488
FOUR MILE CORR CTR	499	495	3	498	499	494
TRINIDAD CORR FAC	484	478	7	485	484	470
S.T.U. at Y.O.S.	30	26	3	29	30	23
SKYLINE CORR CTR	249	245	1	246	249	248
COLORADO CORR CTR	150	148	2	150	150	148
DELTA CORR CTR	484	464	4	468	484	471
RIFLE CORR CTR	192	185	2	187	192	187
COLO CORR ALT PROGRAM	100	59	8	67	100	98
COLO WOMEN'S CORR FAC	224	213	1	214	224	211
DENVER WOMEN'S CORR FAC	866	771	9	780	866	752
DENVER REC DIAG CTR	480	478	13	491	480	466
SAN CARLOS CORR FAC	255	250	2	252	255	247
SUBTOTAL	14,946	14,534	176	14,710	14,937	14,456
CONTRACTS:						
BENT COUNTY CORR CTR		926	24	950	724	599
HUERFANO COUNTY CORR CTR		680	23	703	774	691
CROWLEY COUNTY CORR FAC		1,643	19	1,662	1,720	1,483
KIT CARSON COUNTY CORR FAC		1,048	12	1,060	820	760
CHEYENNE MTN REENTRY CTR		645	1	646	592	565
HIGH PLAINS CORR FAC		254	2	256	270	233
NORTH FORK OK CORR FAC				0	480	478
OFF-GROUNDS POPULATION:			257			273
ESCAPEES/WALKAWAYS				225		242
REVOCATIONS-JAIL				0		0
JAIL BACKLOG:						
BACKLOG LESS THAN 72 HOURS			0		126	
BACKLOG GREATER THAN 72 HOURS (FISCAL YTD AVE =118)			106		50	
BACKLOG-PAROLEES AWAITING TRANSFER			21		63	
TOTAL JAIL BACKLOG			127			239
COUNTY JAIL CONTRACTS			19			65
COMMUNITY CORRECTIONS						
COMMUNITY						
RESIDENTIAL		1,556		1,556	1,378	1,378
NON-RESIDENTIAL			86	86	1	1
PAROLE REVOCATIONS				0	264	264
REVOKED-RET TO CUST		200	50	250	93	93
REGRESSIONS		1	40	41	51	51
TOTAL COMMUNITY		1,757	176	1,933	1,787	1,787
ISP						
RESIDENTIAL		798		798	881	881
NON-RESIDENTIAL			46	46	46	46
REGRESSIONS			12	12	16	16
TOTAL ISP		798	58	856	943	943
TOTAL COMM. CORRECTIONS		2,555	234	2,789	2,730	2,730
MALE POPULATION				20,830		20,475
FEMALE POPULATION				2,317		2,339
TOTAL INMATE JURISDICTIONAL POPULATION				23,147		22,814

*OPERATIONAL CAPACITY INCLUDES ALL BEDS AVAILABLE FOR USE, INCLUDING MANAGEMENT CONTROL UNITS, BWV EXCLUDES EMERGENCY DOUBLE BUNKING

COLORADO DEPARTMENT OF CORRECTIONS
MONTHLY POPULATION AND CAPACITY REPORT
AS OF JANUARY 31, 2009

3-Feb-09

CURRENT MONTH CHANGES IN CAPACITY:

None

NET MONTHLY GROWTH RATE:

CURRENT MONTH	3
FISCAL YEAR-TO-DATE AVERAGE	23

YOUTHFUL OFFENDER SYSTEM

	----- 01/31/09 -----			01/31/08
	PUEBLO	COMM. CORR.	TOTAL POPULATION	TOTAL POPULATION
INTAKE/IDO	8		8	3
RFP/REMEDICATION	12		12	16
PHASE I	154		154	143
PHASE II	10		10	11
PHASE III		34	34	34
OFF GROUNDS/BACKLOG			4	6
TOTAL Y.O.S. POPULATION	184	34	222	213

	CURRENT MONTH	FISCAL YR. TO DATE
YOS ADMISSIONS	2	35
YOS RELEASES:		
COMPLETION OF SENTENCE	6	25
JUDICIAL RELEASE TO PROB/CT ORD DISCHG	0	0
JUDICIAL TRANSFER TO DOC	0	0
TERMINATION/FAILURE	1	7
DECEASED	0	0
TOTAL RELEASES	7	32

PAROLE CASELOAD

	----- 01/31/09 -----			----- 12/31/08 -----		----- 01/31/08 -----	
	DOMESTIC	INTERST PAR/PROB	TOTAL CASELOAD	DOMESTIC	TOTAL CASELOAD	DOMESTIC	TOTAL CASELOAD
DENVER REGION							
REGULAR	2,726	83	2,809	2,693	2,775	2,639	2,720
ISP	645		645	643	643	524	524
SUBTOTAL	3,371	83	3,454	3,336	3,418	3,163	3,244
NORTHEAST REGION							
REGULAR	1,907	98	2,005	1,914	2,013	1,905	1,990
ISP	358		358	344	344	293	293
SUBTOTAL	2,265	98	2,363	2,258	2,357	2,198	2,283
SOUTHEAST REGION							
REGULAR	1,858	77	1,935	1,791	1,871	1,744	1,836
ISP	310		310	309	309	262	262
SUBTOTAL	2,168	77	2,245	2,100	2,180	2,006	2,098
WESTERN REGION							
REGULAR	750	50	800	744	790	640	685
ISP	117		117	99	99	110	110
SUBTOTAL	867	50	917	843	889	750	795
TOTAL CASELOAD							
REGULAR	7,241	308	7,549	7,142	7,449	6,928	7,231
ISP	1,430		1,430	1,395	1,395	1,189	1,189
TOTAL	8,671	308	8,979	8,537	8,844	8,117	8,420
ADDITIONAL CASELOAD:							
OUT-OF-STATE PAROLEES			1,919		1,943		1,909
PAROLEE ABSCONDERS			804		867		821

COLORADO DEPARTMENT OF CORRECTIONS
ADULT INMATE JURISDICTIONAL POPULATION (1)

DATE: 2/3/2009

DATE	MALE POPULATION			FEMALE POPULATION			TOTAL POPULATION		
	Male Population	Net Change	Fiscal Y-T-D Average	Female Population	Net Change	Fiscal Y-T-D Average	Total Population	Net Change	Fiscal Y-T-D Average
01-31-09	20,830	1	21	2,317	2	2	23,147	3	23
12-31-08	20,829	-32		2,315	-8		23,144	-40	
11-30-08	20,861	41		2,323	-17		23,184	24	
10-31-08	20,820	85		2,340	9		23,160	94	
09-30-08	20,735	-33		2,331	27		23,066	-6	
08-31-08	20,768	87		2,304	-10		23,072	77	
07-31-08	20,681	-3		2,314	9		22,995	6	
06-30-08	20,684	-48		2,305	-12		22,989	-60	
05-31-08	20,732	29		2,317	-27		23,049	2	
04-30-08	20,703	65		2,344	-11		23,047	54	
03-31-08	20,638	112		2,355	19		22,993	131	
02-29-08	20,526	51		2,336	-3		22,862	48	
01-31-08	20,475	98		2,339	-19		22,814	79	
12-31-07	20,377	-60	42	2,358	-1	-3	22,735	-61	39
11-30-07	20,437	94		2,359	29		22,796	123	
10-31-07	20,343	85		2,330	2		22,673	87	
09-30-07	20,258	-4		2,328	6		22,586	2	
08-31-07	20,262	107		2,322	-14		22,584	93	
07-31-07	20,155	-23		2,336	-5		22,491	-28	
06-30-07	20,178	41		2,341	9		22,519	50	
05-31-07	20,137	-39		2,332	-3		22,469	-42	
04-30-07	20,176	21		2,335	29		22,511	50	
03-31-07	20,155	75		2,306	-17		22,461	58	
02-28-07	20,080	7		2,323	1		22,403	8	
01-31-07	20,073	43		2,322	2		22,395	45	
12-31-06	20,030	12	32	2,320	6	10	22,350	18	42
11-30-06	20,018	44		2,314	11		22,332	55	
10-31-06	19,974	46		2,303	28		22,277	74	
09-30-06	19,928	139		2,275	33		22,203	172	
08-31-06	19,789	-34		2,242	-7		22,031	-41	
07-31-06	19,823	31		2,249	29		22,072	60	
06-30-06	19,792		97	2,220		12	22,012		109
06-30-05	18,631		68	2,073		27	20,704		95
06-30-04	17,814		49	1,755		11	19,569		60
06-30-03	17,226		57	1,620		10	18,846		67
06-30-02	16,539		87	1,506		14	18,045		101
06-30-01	15,493		63	1,340		6	16,833		70
06-30-00	14,733		99	1,266		7	15,999		106
06-30-99	13,547		75	1,179		14	14,726		89
06-30-98	12,647			1,016			13,663		

(1) Adult inmate jurisdictional population includes on-grounds, off-grounds, out-of-state, escapees, and jail backlog and excludes offenders sentenced to the Youthful Offender System (Y.O.S.).

COLORADO DEPARTMENT OF CORRECTIONS
ADULT INMATE RELEASES FROM PRISON
TOTAL Population (Male and Female)

Date: 3/20/2009

	Parole*					Discharge				Other				Total
	Discretionary	Mandatory	Wknd. Mand.	Mand. Repar.	Wknd. Mand. Repar.	Sentence	H.B. 1087	Martin/Cooper	Chgs/Det.	Probation	Ct. Ord. Dsch.	Appeal Bond	Deceased	
Jan-09	277	172	124	80	80	38	67	4	27	7	13	0	9	898
Dec-08	288	194	172	98	71	40	56	4	7	15	11	0	3	959
Nov-08	456	144	N/A	86	N/A	37	45	5	16	7	8	0	0	804
Oct-08	444	211	N/A	83	N/A	34	51	3	25	17	13	0	6	887
Sep-08	426	184	N/A	93	N/A	35	63	6	31	12	10	1	5	866
Aug-08	412	164	N/A	110	N/A	40	59	6	15	10	4	0	2	822
Jul-08	506	233	N/A	126	N/A	30	49	6	17	15	6	0	4	992
FYTD-Avg.	401	186	N/A	97	N/A	36	56	5	20	12	9	0	4	890
FY 2008-Avg.	466	186	N/A	88	N/A	34	56	8	17	12	11	0	4	881
FY 2007-Avg.	422	198	N/A	89	N/A	31	50	10	16	13	9	0	4	843
FY 2006-Avg.	234	266	N/A	98	N/A	38	50	13	15	16	10	0	5	746

Definitions of Release Types

Discretionary parole-Released to parole through Parole Board discretion prior to mandatory release or sentence discharge date.

Mandatory parole-Released to parole on mandatory release date.

Wknd Mand.-Mandatory releases scheduled to release on a weekend; released a few days early under Parole Board authority.

Mand. Repar.-Reparoled on specific date set by Parole Board (includes S.B. 252 reparoles). n/a - breakout not available prior to June 2004.

Wknd Mand. Repar.-Mandatory Reparole releases scheduled to release on a weekend; released a few days early under Parole Board authority.

Sentence discharge-Completion of sentence with no further supervision.

H.B. 1087 discharge-Completion of sentence with no further supervision, subject to earn time provisions of H.B. 95-1087.

Martin/ Cooper discharge-Completion of sentence with no further supervision, sex offender subject to Martin/Cooper Supreme Court decision.

Chgs/ Det. discharge-Completion of sentence, released to other law enforcement for pending charges or detainees.

Probation-Released by court to probation.

Ct. Ord. Dsch.-Released by court order.

Appeal Bond-Released by court to appeal bond.

Deceased-Offender death in prison.

***Due to the decrease in community transportation services, the Department implemented a procedural change in December 2005 with regards to releasing inmates on weekends. As a result, discretionary releases increased and mandatory releases decreased. However, beginning December 2008, the implementation of a new electronic coding system enabled these releases to be correctly classified as weekend mandatory parole and mandatory reparole releases.**

COLORADO DEPARTMENT OF CORRECTIONS
ADULT INMATE RELEASES FROM PRISON

Date: 3/20/2009

Male Population Only

	Parole*					Discharge					Other				Total
	Discretionary	Mandatory	Wknd. Mand.	Mand. Repar.	Wknd. Mand. Repar.	Sentence	H.B. 1087	Martin/Cooper	Chgs/Det.	Com Spv. Elim	Probation	Ct. Ord. Dsch.	Appeal Bond	Deceased	
Jan-09	233	147	111	70	73	34	58	4	24	0	7	11	0	7	779
Dec-08	246	175	152	88	64	36	48	4	6	0	10	10	0	3	842
Nov-08	389	132	N/A	73	N/A	34	39	5	14	0	5	8	0	0	699
Oct-08	388	183	N/A	75	N/A	32	46	3	22	0	15	13	0	6	783
Sep-08	372	165	N/A	87	N/A	30	60	6	26	0	11	10	1	4	772
Aug-08	338	147	N/A	89	N/A	37	52	6	14	0	8	4	0	1	696
Jul-08	444	207	N/A	102	N/A	30	46	6	15	0	13	6	0	4	873
FYTD-Avg.	344	165	N/A	83	N/A	33	50	5	17	0	10	9	0	4	778
FY 2008-Avg.	397	162	N/A	76	N/A	32	48	8	16	0	10	9	0	4	762
FY 2007-Avg.	359	175	N/A	77	N/A	29	45	9	15	0	11	8	0	4	733
FY 2006-Avg.	196	233	N/A	84	N/A	35	46	13	14	0	15	9	0	5	648

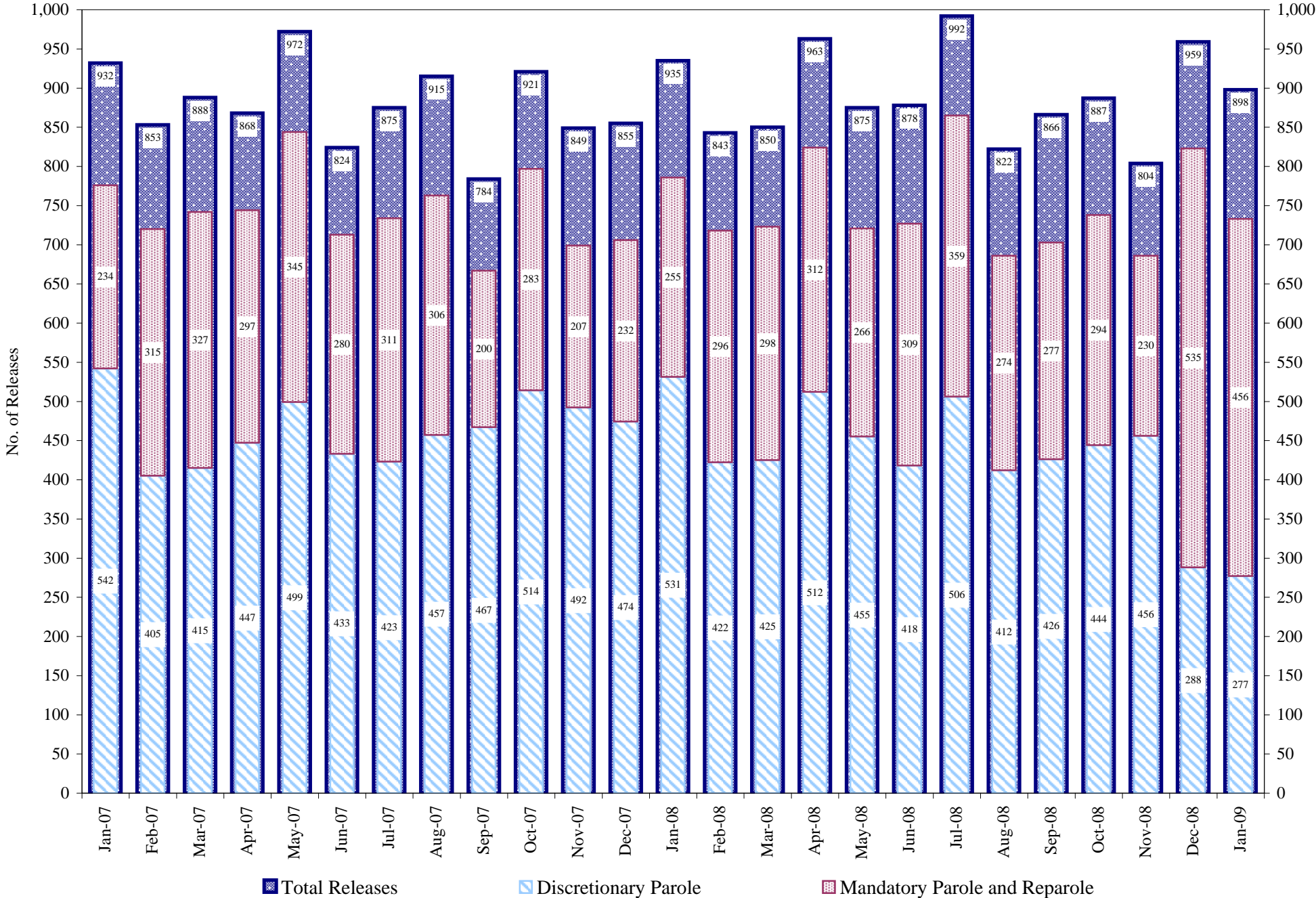
Female Population Only

	Parole*					Discharge					Other				Total
	Discretionary	Mandatory	Wknd. Mand.	Mand. Repar.	Wknd. Mand. Repar.	Sentence	H.B. 1087	Martin/Cooper	Chgs/Det.	Com Spv. Elim	Probation	Ct. Ord. Dsch.	Appeal Bond	Deceased	
Jan-09	44	25	13	10	7	4	9	0	3	0	0	2	0	2	119
Dec-08	42	19	20	10	7	4	8	0	1	0	5	1	0	0	117
Nov-08	67	12	N/A	13	N/A	3	6	0	2	0	2	0	0	0	105
Oct-08	56	28	N/A	8	N/A	2	5	0	3	0	2	0	0	0	104
Sep-08	54	19	N/A	6	N/A	5	3	0	5	0	1	0	0	1	94
Aug-08	74	17	N/A	21	N/A	3	7	0	1	0	2	0	0	1	126
Jul-08	62	26	N/A	24	N/A	0	3	0	2	0	2	0	0	0	119
FYTD-Avg.	57	21	N/A	13	N/A	3	6	0	2	0	2	0	0	1	112
FY 2008-Avg.	69	23	N/A	12	N/A	2	7	0	2	0	2	2	0	0	119
FY 2007-Avg.	63	23	N/A	11	N/A	2	6	0	1	0	2	1	0	0	109
FY 2006-Avg.	39	34	N/A	14	N/A	3	5	0	1	0	2	1	0	0	98

Definitions of Release Types
See previous page.

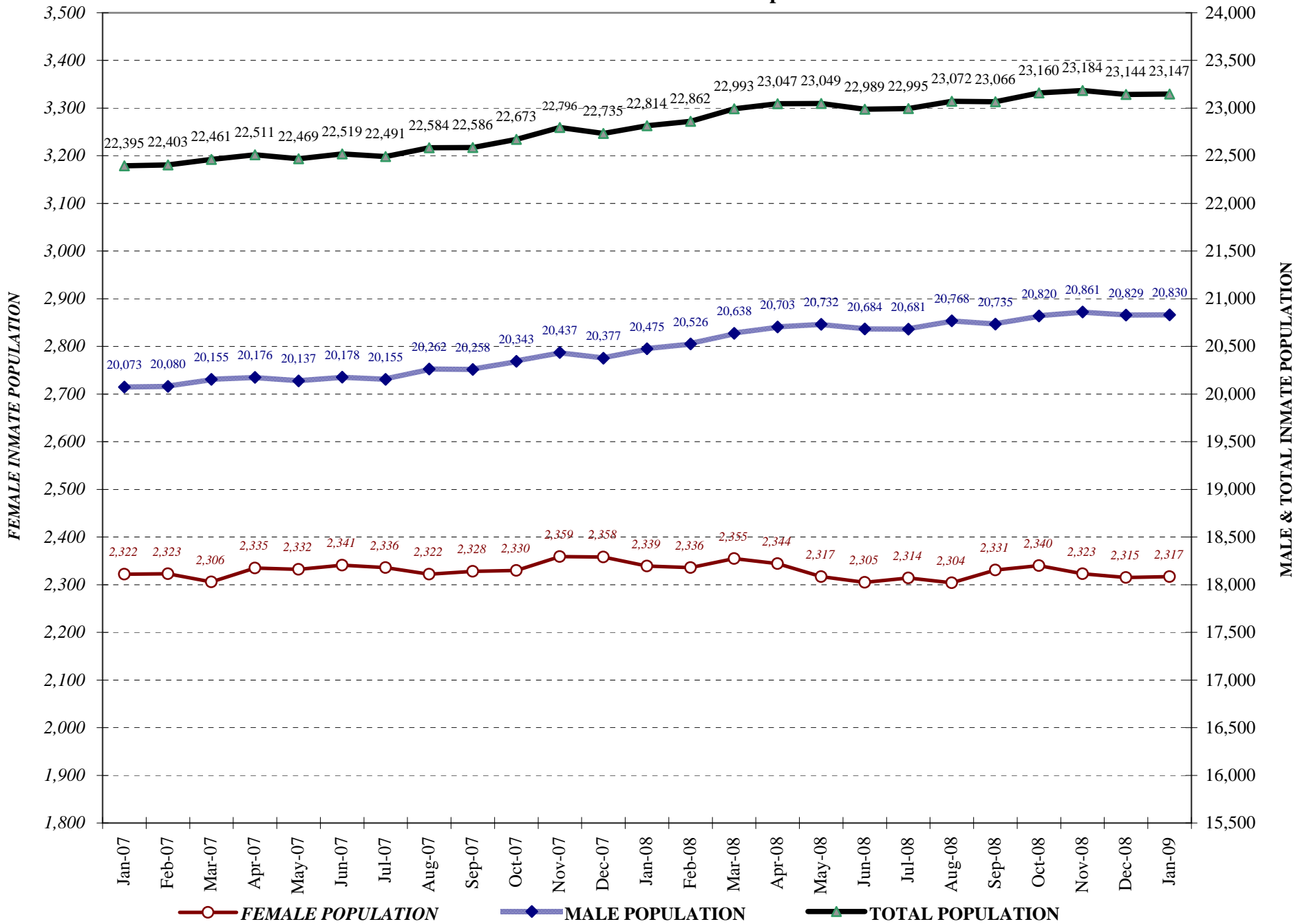
COLORADO DEPARTMENT OF CORRECTIONS

Adult Prison Releases

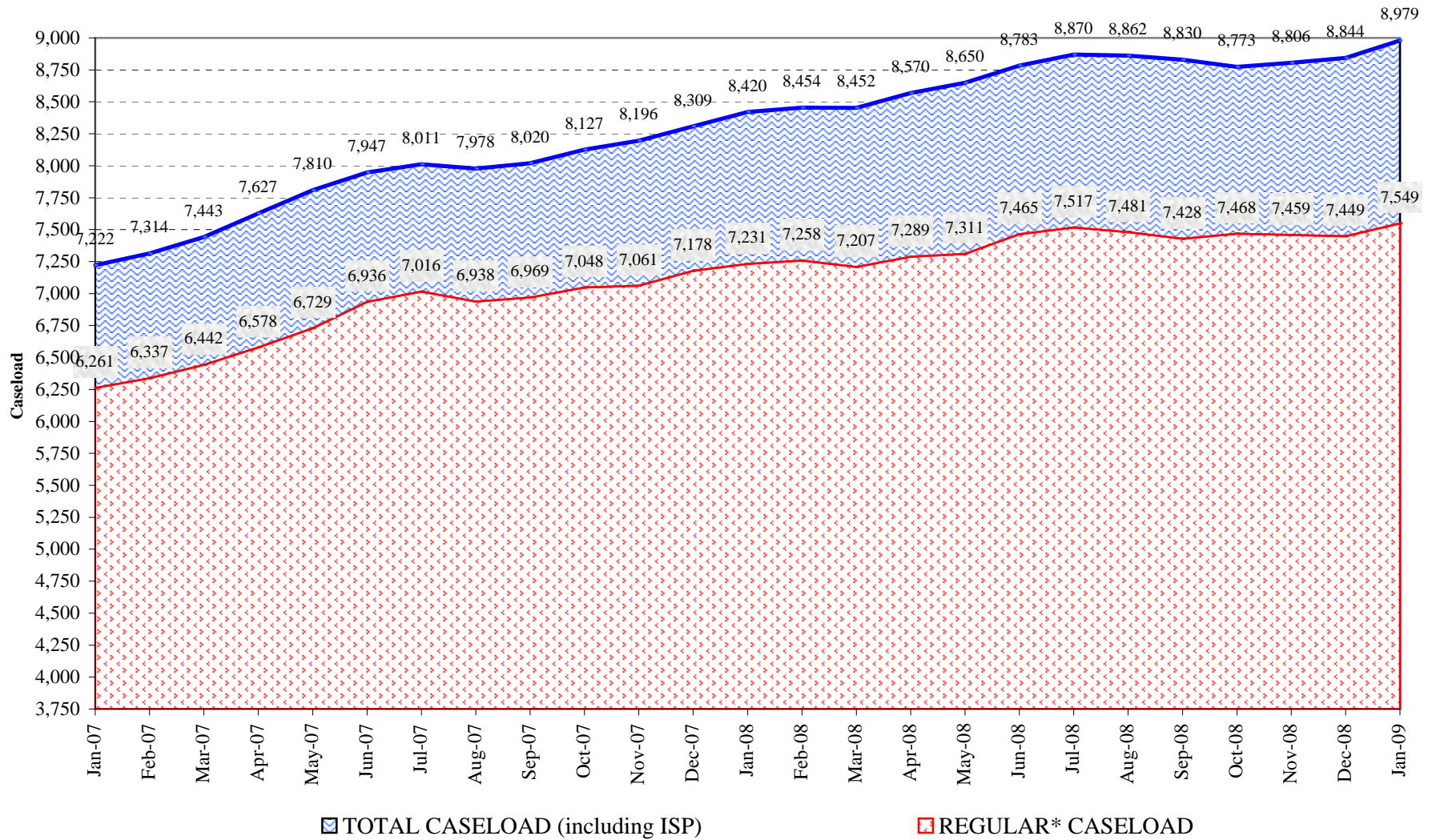


Total releases include releases to discretionary parole, mandatory parole and reparole, all types of discharges and other releases as detailed on the previous two pages.

COLORADO DEPARTMENT OF CORRECTIONS Adult Jurisdiction Inmate Population



COLORADO DEPARTMENT OF CORRECTIONS Parole Population



* Regular caseload includes interstate parole, but excludes out-of-state parolees and absconders.