

**COLORADO DEPARTMENT OF CORRECTIONS
MONTHLY POPULATION AND CAPACITY REPORT
AS OF DECEMBER 31, 2008**

	12/31/2008 OPERATIONAL CAPACITY*	12/31/08			6-Jan-09	
		ON-GRDS POPULATION	OFF-GRDS POPULATION	TOTAL POPULATION	OPERATIONAL CAPACITY*	ON-GRDS POPULATION
COLO STATE PENITENTIARY	756	752	6	758	756	738
CENTENNIAL CORR FAC	336	321	0	321	336	312
STERLING CORR FAC	2,545	2,495	23	2,518	2,545	2,499
LIMON CORR FAC	953	949	10	959	953	921
ARK VALLEY CORR FAC	1,007	1,001	6	1,007	1,007	1,002
BUENA VISTA CORR FAC	926	905	7	912	926	889
BUENA VISTA MIN CTR	292	287	7	294	292	279
COLO TERR CORR FAC	944	937	7	944	936	893
FORT LYON CORR FAC	500	491	10	501	500	492
FREMONT CORR FAC	1,661	1,643	10	1,653	1,660	1,660
LA VISTA CORR FAC	519	459	6	465	519	480
ARROWHEAD CORR CTR	494	493	0	493	494	488
FOUR MILE CORR CTR	499	493	4	497	499	497
TRINIDAD CORR FAC	484	459	7	466	484	472
S.T.U. at Y.O.S.	30	28	2	30	30	23
SKYLINE CORR CTR	249	246	1	247	249	248
COLORADO CORR CTR	150	150	1	151	150	146
DELTA CORR CTR	484	477	4	481	484	467
RIFLE CORR CTR	192	192	0	192	192	190
COLO CORR ALT PROGRAM	100	58	1	59	100	100
COLO WOMEN'S CORR FAC	224	209	1	210	224	201
DENVER WOMEN'S CORR FAC	866	771	5	776	866	784
DENVER REC DIAG CTR	480	450	12	462	480	424
SAN CARLOS CORR FAC	255	244	5	249	255	249
SUBTOTAL	14,946	14,510	135	14,645	14,937	14,454
CONTRACTS:						
BENT COUNTY CORR CTR		917	14	931	724	621
HUERFANO COUNTY CORR CTR		723	13	736	774	705
CROWLEY COUNTY CORR FAC		1,641	21	1,662	1,720	1,528
KIT CARSON COUNTY CORR FAC		1,068	12	1,080	820	749
CHEYENNE MTN REENTRY CTR		667	3	670	500	554
HIGH PLAINS CORR FAC		259	4	263	270	244
NORTH FORK OK CORR FAC				0	480	477
OFF-GROUNDS POPULATION:						
ESCAPEES/WALKAWAYS				231		261
REVOCATIONS-JAIL				0		0
JAIL BACKLOG:						
BACKLOG LESS THAN 72 HOURS			0		54	
BACKLOG GREATER THAN 72 HOURS (FISCAL YTD AVE = 125)			58		44	
BACKLOG-PAROLEES AWAITING TRANSFER			38		41	
TOTAL JAIL BACKLOG			96			139
COUNTY JAIL CONTRACTS			6			79
COMMUNITY CORRECTIONS						
COMMUNITY						
RESIDENTIAL		1,529		1,529	1,377	1,377
NON-RESIDENTIAL			78	78	90	90
PAROLE REVOCATIONS				0	0	0
REVOKED-RET TO CUST		201	73	274	257	257
REGRESSIONS			52	52	53	53
TOTAL COMMUNITY		1,730	203	1,933	1,777	1,777
ISP						
RESIDENTIAL		833		833	913	913
NON-RESIDENTIAL			56	56	42	42
REGRESSIONS			2	2	8	8
TOTAL ISP		833	58	891	963	963
TOTAL COMM. CORRECTIONS		2,563	261	2,824	2,740	2,740
MALE POPULATION				20,829		20,377
FEMALE POPULATION				2,315		2,358
TOTAL INMATE JURISDICTIONAL POPULATION				23,144		22,735

*OPERATIONAL CAPACITY INCLUDES ALL BEDS AVAILABLE FOR USE, INCLUDING MANAGEMENT CONTROL UNITS, BUT EXCLUDES EMERGENCY DOUBLE BUNKING

COLORADO DEPARTMENT OF CORRECTIONS
MONTHLY POPULATION AND CAPACITY REPORT
AS OF DECEMBER 31, 2008

6-Jan-09

CURRENT MONTH CHANGES IN CAPACITY:

None

NET MONTHLY GROWTH RATE:

CURRENT MONTH	-40
FISCAL YEAR-TO-DATE AVERAGE	26

YOUTHFUL OFFENDER SYSTEM

	----- 12/31/08 -----			12/31/07
	PUEBLO	COMM. CORR.	TOTAL POPULATION	TOTAL POPULATION
INTAKE/IDO	5		5	9
RFP/REMEDICATION	12		12	10
PHASE I	155		155	145
PHASE II	10		10	10
PHASE III	1	40	41	35
OFF GROUNDS/BACKLOG			4	2
TOTAL Y.O.S. POPULATION	183	40	227	211

	CURRENT MONTH	FISCAL YR. TO DATE
YOS ADMISSIONS	6	33
YOS RELEASES:		
COMPLETION OF SENTENCE	3	19
JUDICIAL RELEASE TO PROB/CT ORD DISCHG	0	0
JUDICIAL TRANSFER TO DOC	0	0
TERMINATION/FAILURE	2	6
DECEASED	0	0
TOTAL RELEASES	5	25

PAROLE CASELOAD

	----- 12/31/08 -----			----- 11/30/08 -----		----- 12/31/07 -----	
	DOMESTIC	INTERST PAR/PROB	TOTAL CASELOAD	DOMESTIC	TOTAL CASELOAD	DOMESTIC	TOTAL CASELOAD
DENVER REGION							
REGULAR	2,693	82	2,775	2,686	2,771	2,536	2,649
ISP	643		643	620	620	513	513
SUBTOTAL	3,336	82	3,418	3,306	3,391	3,049	3,162
NORTHEAST REGION							
REGULAR	1,914	99	2,013	1,931	2,029	1,925	1,972
ISP	344		344	322	322	259	259
SUBTOTAL	2,258	99	2,357	2,253	2,351	2,184	2,231
SOUTHEAST REGION							
REGULAR	1,791	80	1,871	1,795	1,877	1,778	1,874
ISP	309		309	294	294	247	247
SUBTOTAL	2,100	80	2,180	2,089	2,171	2,025	2,121
WESTERN REGION							
REGULAR	744	46	790	737	782	638	683
ISP	99		99	111	111	112	112
SUBTOTAL	843	46	889	848	893	750	795
TOTAL CASELOAD							
REGULAR	7,142	307	7,449	7,149	7,459	6,877	7,178
ISP	1,395		1,395	1,347	1,347	1,131	1,131
TOTAL	8,537	307	8,844	8,496	8,806	8,008	8,309
ADDITIONAL CASELOAD:							
OUT-OF-STATE PAROLEES			1,943		1,939		1,889
PAROLEE ABSCONDERS			867		828		888

COLORADO DEPARTMENT OF CORRECTIONS
ADULT INMATE JURISDICTIONAL POPULATION (1)

DATE: 1/6/2009

DATE	MALE POPULATION			FEMALE POPULATION			TOTAL POPULATION		
	Male Population	Net Change	Fiscal Y-T-D Average	Female Population	Net Change	Fiscal Y-T-D Average	Total Population	Net Change	Fiscal Y-T-D Average
12-31-08	20,829	-32	24	2,315	-8	2	23,144	-40	26
11-30-08	20,861	41		2,323	-17		23,184	24	
10-31-08	20,820	85		2,340	9		23,160	94	
09-30-08	20,735	-33		2,331	27		23,066	-6	
08-31-08	20,768	87		2,304	-10		23,072	77	
07-31-08	20,681	-3		2,314	9		22,995	6	
06-30-08	20,684	-48		2,305	-12		22,989	-60	
05-31-08	20,732	29		2,317	-27		23,049	2	
04-30-08	20,703	65		2,344	-11		23,047	54	
03-31-08	20,638	112		2,355	19		22,993	131	
02-29-08	20,526	51		2,336	-3		22,862	48	
01-31-08	20,475	98		2,339	-19		22,814	79	
12-31-07	20,377	-60	42	2,358	-1	-3	22,735	-61	39
11-30-07	20,437	94		2,359	29		22,796	123	
10-31-07	20,343	85		2,330	2		22,673	87	
09-30-07	20,258	-4		2,328	6		22,586	2	
08-31-07	20,262	107		2,322	-14		22,584	93	
07-31-07	20,155	-23		2,336	-5		22,491	-28	
06-30-07	20,178	41		2,341	9		22,519	50	
05-31-07	20,137	-39		2,332	-3		22,469	-42	
04-30-07	20,176	21		2,335	29		22,511	50	
03-31-07	20,155	75		2,306	-17		22,461	58	
02-28-07	20,080	7		2,323	1		22,403	8	
01-31-07	20,073	43		2,322	2		22,395	45	
12-31-06	20,030	12	32	2,320	6	10	22,350	18	42
11-30-06	20,018	44		2,314	11		22,332	55	
10-31-06	19,974	46		2,303	28		22,277	74	
09-30-06	19,928	139		2,275	33		22,203	172	
08-31-06	19,789	-34		2,242	-7		22,031	-41	
07-31-06	19,823	31		2,249	29		22,072	60	
06-30-06	19,792		97	2,220		12	22,012		109
06-30-05	18,631		68	2,073		27	20,704		95
06-30-04	17,814		49	1,755		11	19,569		60
06-30-03	17,226		57	1,620		10	18,846		67
06-30-02	16,539		87	1,506		14	18,045		101
06-30-01	15,493		63	1,340		6	16,833		70
06-30-00	14,733		99	1,266		7	15,999		106
06-30-99	13,547		75	1,179		14	14,726		89
06-30-98	12,647			1,016			13,663		

(1) Adult inmate jurisdictional population includes on-grounds, off-grounds, out-of-state, escapees, and jail backlog and excludes offenders sentenced to the Youthful Offender System (Y.O.S.).

COLORADO DEPARTMENT OF CORRECTIONS
ADULT INMATE RELEASES FROM PRISON
TOTAL Population (Male and Female)

Date: 3/20/2009

	Parole*					Discharge					Other				Total
	Discretionary	Mandatory	Wknd. Mand.	Mand. Repar.	Wknd. Mand. Repar.	Sentence	H.B. 1087	Martin/Cooper	Chgs/Det.	Probation	Ct. Ord. Dsch.	Appeal Bond	Deceased		
Dec-08	288	194	172	98	71	40	56	4	7	15	11	0	3	959	
Nov-08	456	144	N/A	86	N/A	37	45	5	16	7	8	0	0	804	
Oct-08	444	211	N/A	83	N/A	34	51	3	25	17	13	0	6	887	
Sep-08	426	184	N/A	93	N/A	35	63	6	31	12	10	1	5	866	
Aug-08	412	164	N/A	110	N/A	40	59	6	15	10	4	0	2	822	
Jul-08	506	233	N/A	126	N/A	30	49	6	17	15	6	0	4	992	
FYTD-Avg.	422	188	N/A	99	N/A	36	54	5	19	13	9	0	3	888	
FY 2008-Avg.	466	186	N/A	88	N/A	34	56	8	17	12	11	0	4	881	
FY 2007-Avg.	422	198	N/A	89	N/A	31	50	10	16	13	9	0	4	843	
FY 2006-Avg.	234	266	N/A	98	N/A	38	50	13	15	16	10	0	5	746	

Definitions of Release Types

Discretionary parole-Released to parole through Parole Board discretion prior to mandatory release or sentence discharge date.

Mandatory parole-Released to parole on mandatory release date.

Wknd Mand.-Mandatory releases scheduled to release on a weekend; released a few days early under Parole Board authority.

Mand. Repar.-Reparoled on specific date set by Parole Board (includes S.B. 252 reparoles). n/a - breakout not available prior to June 2004.

Wknd Mand. Repar.-Mandatory Reparole releases scheduled to release on a weekend; released a few days early under Parole Board authority.

Sentence discharge-Completion of sentence with no further supervision.

H.B. 1087 discharge-Completion of sentence with no further supervision, subject to earn time provisions of H.B. 95-1087.

Martin/ Cooper discharge-Completion of sentence with no further supervision, sex offender subject to Martin/Cooper Supreme Court decision.

Chgs/ Det. discharge-Completion of sentence, released to other law enforcement for pending charges or detainees.

Probation-Released by court to probation.

Ct. Ord. Dsch.-Released by court order.

Appeal Bond-Released by court to appeal bond.

Deceased-Offender death in prison.

***Due to the decrease in community transportation services, the Department implemented a procedural change in December 2005 with regards to releasing inmates on weekends. As a result, discretionary releases increased and mandatory releases decreased. However, beginning December 2008, the implementation of a new electronic coding system enabled these releases to be correctly classified as weekend mandatory parole and mandatory reparole releases.**

COLORADO DEPARTMENT OF CORRECTIONS
ADULT INMATE RELEASES FROM PRISON

Date: 3/20/2009

Male Population Only

	Parole*					Discharge				Other				Total
	Discretionary	Mandatory	Wknd. Mand.	Mand. Repar.	Wknd. Mand. Repar.	Sentence	H.B. 1087	Martin/Cooper	Chgs/Det.	Probation	Ct. Ord. Dsch.	Appeal Bond	Deceased	
Dec-08	246	175	152	88	64	36	48	4	6	10	10	0	3	842
Nov-08	389	132	N/A	73	N/A	34	39	5	14	5	8	0	0	699
Oct-08	388	183	N/A	75	N/A	32	46	3	22	15	13	0	6	783
Sep-08	372	165	N/A	87	N/A	30	60	6	26	11	10	1	4	772
Aug-08	338	147	N/A	89	N/A	37	52	6	14	8	4	0	1	696
Jul-08	444	207	N/A	102	N/A	30	46	6	15	13	6	0	4	873
FYTD-Avg.	363	168	N/A	86	N/A	33	49	5	16	10	9	0	3	778
FY 2008-Avg.	397	162	N/A	76	N/A	32	48	8	16	10	9	0	4	762
FY 2007-Avg.	359	175	N/A	77	N/A	29	45	9	15	11	8	0	4	733
FY 2006-Avg.	196	233	N/A	84	N/A	35	46	13	14	15	9	0	5	648

Female Population Only

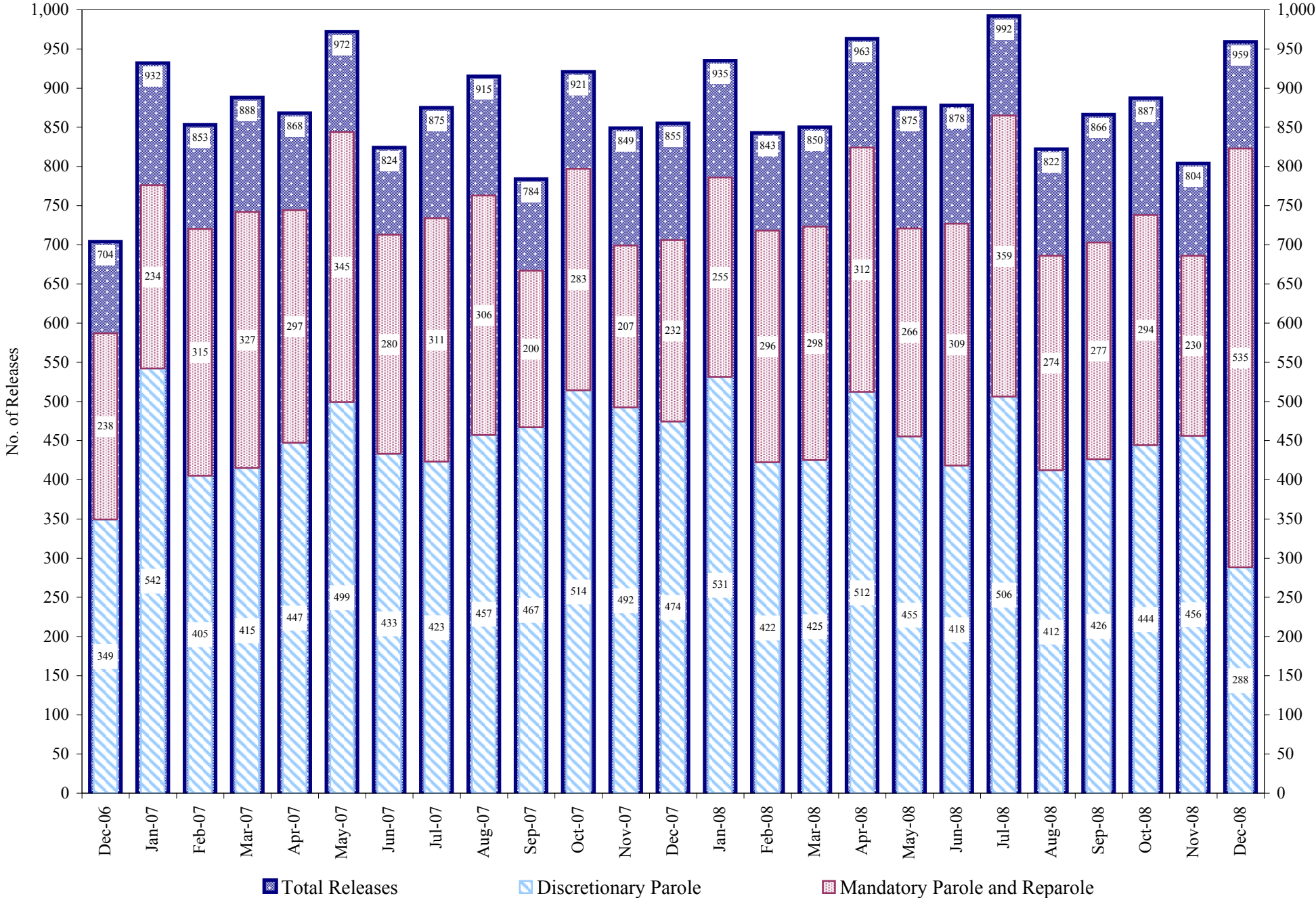
	Parole*					Discharge				Other				Total
	Discretionary	Mandatory	Wknd. Mand.	Mand. Repar.	Wknd. Mand. Repar.	Sentence	H.B. 1087	Martin/Cooper	Chgs/Det.	Probation	Ct. Ord. Dsch.	Appeal Bond	Deceased	
Dec-08	42	19	20	10	7	4	8	0	1	5	1	0	0	117
Nov-08	67	12	N/A	13	N/A	3	6	0	2	2	0	0	0	105
Oct-08	56	28	N/A	8	N/A	2	5	0	3	2	0	0	0	104
Sep-08	54	19	N/A	6	N/A	5	3	0	5	1	0	0	1	94
Aug-08	74	17	N/A	21	N/A	3	7	0	1	2	0	0	1	126
Jul-08	62	26	N/A	24	N/A	0	3	0	2	2	0	0	0	119
FYTD-Avg.	59	20	N/A	14	N/A	3	5	0	2	2	0	0	0	111
FY 2008-Avg.	69	23	N/A	12	N/A	2	7	0	2	2	2	0	0	119
FY 2007-Avg.	63	23	N/A	11	N/A	2	6	0	1	2	1	0	0	109
FY 2006-Avg.	39	34	N/A	14	N/A	3	5	0	1	2	1	0	0	98

Definitions of Release Types

See previous page.

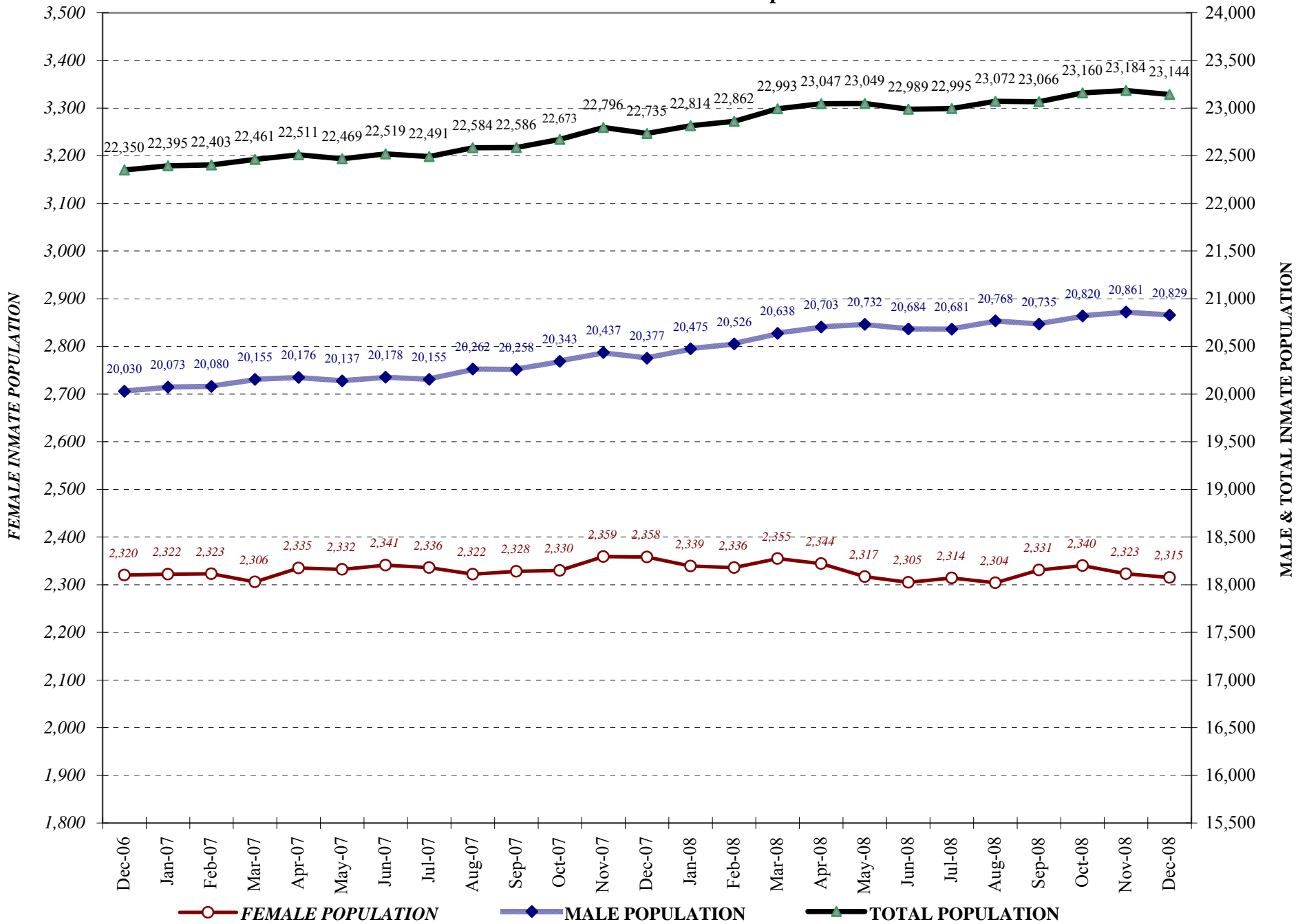
COLORADO DEPARTMENT OF CORRECTIONS

Adult Prison Releases

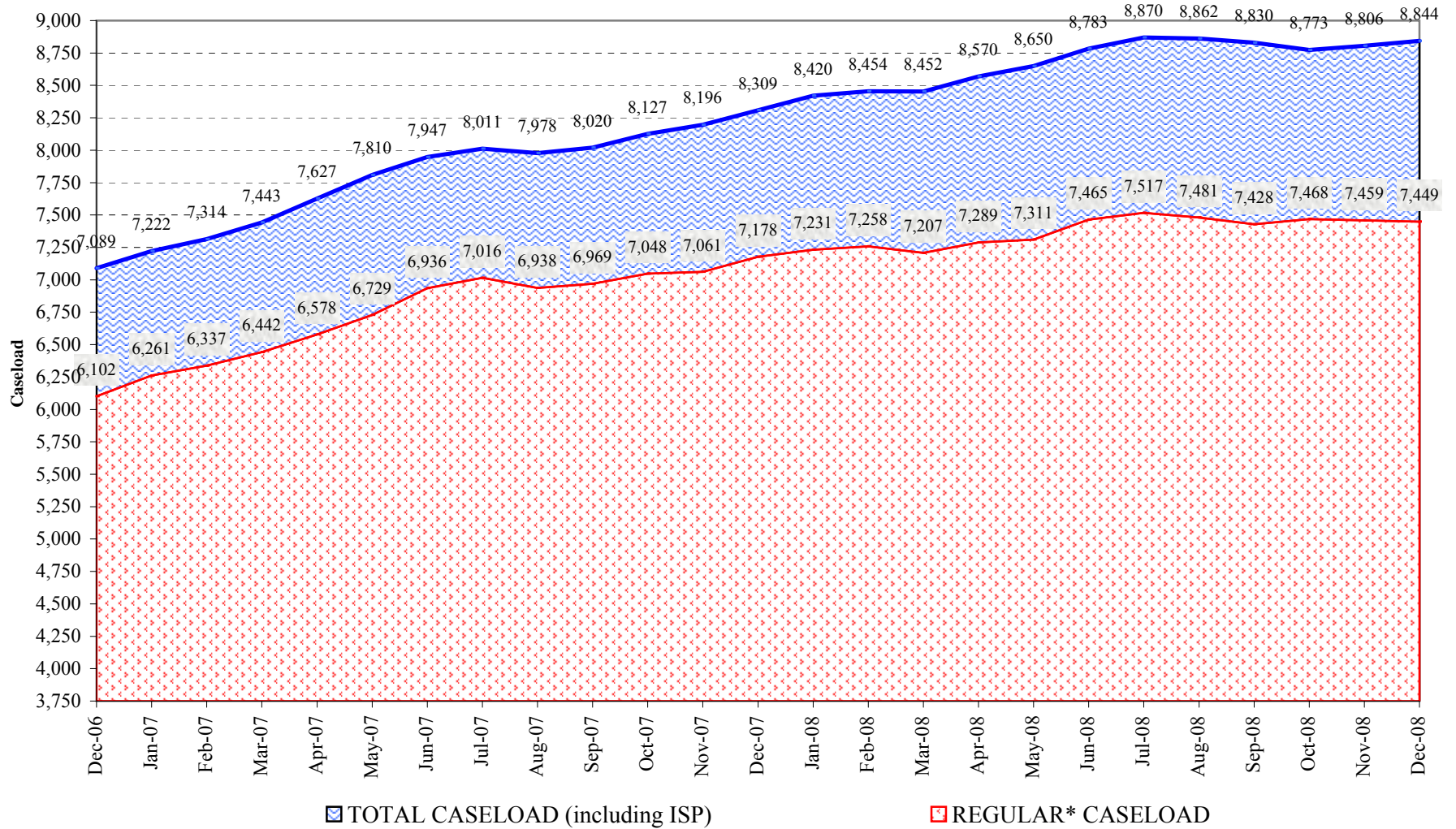


Total releases include releases to discretionary parole, mandatory parole and reparole, all types of discharges and other releases as detailed on the previous two pages.

COLORADO DEPARTMENT OF CORRECTIONS Adult Jurisdictional Inmate Population



COLORADO DEPARTMENT OF CORRECTIONS Parole Population



* Regular caseload includes interstate parole, but excludes out-of-state parolees and absconders.