

**COLORADO DEPARTMENT OF CORRECTIONS  
MONTHLY POPULATION AND CAPACITY REPORT  
AS OF NOVEMBER 30, 2008**

3-Dec-08

	11/30/2008	11/30/08			11/30/07	
	OPERATIONAL CAPACITY*	ON-GRDS POPULATION	OFF-GRDS POPULATION	TOTAL POPULATION	OPERATIONAL CAPACITY*	ON-GRDS POPULATION
COLO STATE PENITENTIARY	756	740	8	748	756	754
CENTENNIAL CORR FAC	336	324	0	324	336	313
STERLING CORR FAC	2,545	2,495	19	2,514	2,545	2,503
LIMON CORR FAC	953	942	8	950	953	906
ARK VALLEY CORR FAC	1,007	1,002	7	1,009	1,007	997
BUENA VISTA CORR FAC	926	904	12	916	926	882
BUENA VISTA MIN CTR	292	287	3	290	292	278
COLO TERR CORR FAC	944	905	12	917	936	914
FORT LYON CORR FAC	500	481	10	491	500	486
FREMONT CORR FAC	1,661	1,652	14	1,666	1,660	1,544
LA VISTA CORR FAC	519	493	9	502	519	464
ARROWHEAD CORR CTR	494	483	4	487	494	484
FOUR MILE CORR CTR	499	496	1	497	499	493
TRINIDAD CORR FAC	484	479	7	486	484	473
S.T.U. at Y.O.S.	30	9	2	11	30	14
SKYLINE CORR CTR	249	248	3	251	249	238
COLORADO CORR CTR	150	145	1	146	150	150
DELTA CORR CTR	484	465	5	470	484	469
RIFLE CORR CTR	192	184	2	186	192	183
COLO CORR ALT PROGRAM	100	57	9	66	100	95
COLO WOMEN'S CORR FAC	224	211	1	212	224	203
DENVER WOMEN'S CORR FAC	866	746	6	752	866	774
DENVER REC DIAG CTR	480	479	17	496	480	471
SAN CARLOS CORR FAC	255	245	4	249	255	250
<b>***SUBTOTAL***</b>	<b>14,946</b>	<b>14,472</b>	<b>164</b>	<b>14,636</b>	<b>14,937</b>	<b>14,338</b>
<b>CONTRACTS:</b>						
BENT COUNTY CORR CTR		922	17	939	724	691
HUERFANO COUNTY CORR CTR		750	22	772	774	700
CROWLEY COUNTY CORR FAC		1,643	27	1,670	1,720	1,575
KIT CARSON COUNTY CORR FAC		1,044	11	1,055	820	745
CHEYENNE MTN REENTRY CTR		671	2	673	500	519
HIGH PLAINS CORR FAC		265	5	270	270	232
NORTH FORK OK CORR FAC				0	480	478
OFF-GROUNDS POPULATION:			248			269
ESCAPEES/WALKAWAYS				228		242
REVOCATIONS-JAIL				0		1
JAIL BACKLOG:						
BACKLOG LESS THAN 72 HOURS			8		124	
BACKLOG GREATER THAN 72 HOURS (FISCAL YTD AVE = 133)			101		22	
BACKLOG-PAROLEES AWAITING TRANSFER			26		50	
TOTAL JAIL BACKLOG			135			196
<b>COUNTY JAIL CONTRACTS</b>			7			83
<b>COMMUNITY CORRECTIONS</b>						
<b>COMMUNITY</b>						
RESIDENTIAL		1,486		1,486	1,386	1,386
NON-RESIDENTIAL			102	102	83	83
PAROLE REVOCATIONS				0	0	0
REVOKED-RET TO CUST		223	55	278	261	261
REGRESSIONS			36	36	35	35
<b>TOTAL COMMUNITY</b>		<b>1,709</b>	<b>193</b>	<b>1,902</b>	<b>1,765</b>	<b>1,765</b>
<b>ISP</b>						
RESIDENTIAL		849		849	904	904
NON-RESIDENTIAL			42	42	52	52
REGRESSIONS			6	6	6	6
<b>TOTAL ISP</b>		<b>849</b>	<b>48</b>	<b>897</b>	<b>962</b>	<b>962</b>
<b>TOTAL COMM. CORRECTIONS</b>		<b>2,558</b>	<b>241</b>	<b>2,799</b>	<b>2,727</b>	<b>2,727</b>
MALE POPULATION				<b>20,861</b>		20,437
FEMALE POPULATION				<b>2,323</b>		2,359
<b>**TOTAL INMATE JURISDICTIONAL POPULATION**</b>				<b>23,184</b>		<b>22,796</b>

\*OPERATIONAL CAPACITY INCLUDES ALL BEDS AVAILABLE FOR USE, INCLUDING MANAGEMENT CONTROL UNITS, BWV EXCLUDES EMERGENCY DOUBLE BUNKING

**COLORADO DEPARTMENT OF CORRECTIONS**  
**MONTHLY POPULATION AND CAPACITY REPORT**  
**AS OF NOVEMBER 30, 2008**

3-Dec-08

CURRENT MONTH CHANGES IN CAPACITY:

None

**NET MONTHLY GROWTH RATE:**

CURRENT MONTH	24
FISCAL YEAR-TO-DATE AVERAGE	39

**YOUTHFUL OFFENDER SYSTEM**

	----- 11/30/08 -----			11/30/07
	PUEBLO	COMM. CORR.	TOTAL POPULATION	TOTAL POPULATION
INTAKE/IDO	8		8	5
RFP/REMEDICATION	18		18	10
PHASE I	142		142	155
PHASE II	14		14	11
PHASE III		42	42	31
OFF GROUNDS/BACKLOG			3	2
<b>**TOTAL Y.O.S. POPULATION**</b>	<b>182</b>	<b>42</b>	<b>227</b>	<b>214</b>

	CURRENT MONTH	FISCAL YR. TO DATE
YOS ADMISSIONS	5	27
YOS RELEASES:		
COMPLETION OF SENTENCE	2	16
JUDICIAL RELEASE TO PROB/CT ORD DISCHG	0	0
JUDICIAL TRANSFER TO DOC	0	0
TERMINATION/FAILURE	0	4
DECEASED	0	0
TOTAL RELEASES	2	20

**PAROLE CASELOAD**

	----- 11/30/08 -----			----- 10/31/08 -----		----- 11/30/07 -----	
	DOMESTIC	INTERST PAR/PROB	TOTAL CASELOAD	DOMESTIC	TOTAL CASELOAD	DOMESTIC	TOTAL CASELOAD
DENVER REGION							
REGULAR	2,686	85	2,771	2,657	2,741	2,536	2,646
ISP	620		620	613	613	504	504
SUBTOTAL	3,306	85	3,391	3,270	3,354	3,040	3,150
NORTHEAST REGION							
REGULAR	1,931	98	2,029	1,963	2,061	1,919	1,965
ISP	322		322	296	296	248	248
SUBTOTAL	2,253	98	2,351	2,259	2,357	2,167	2,213
SOUTHEAST REGION							
REGULAR	1,795	82	1,877	1,807	1,883	1,677	1,768
ISP	294		294	312	312	270	270
SUBTOTAL	2,089	82	2,171	2,119	2,195	1,947	2,038
WESTERN REGION							
REGULAR	737	45	782	740	783	641	682
ISP	111		111	84	84	113	113
SUBTOTAL	848	45	893	824	867	754	795
TOTAL CASELOAD							
REGULAR	7,149	310	7,459	7,167	7,468	6,773	7,061
ISP	1,347		1,347	1,305	1,305	1,135	1,135
TOTAL	8,496	310	8,806	8,472	8,773	7,908	8,196
ADDITIONAL CASELOAD:							
OUT-OF-STATE PAROLEES			1,939		1,971		1,887
PAROLEE ABSCONDERS	828			830		888	



**COLORADO DEPARTMENT OF CORRECTIONS**  
ADULT INMATE JURISDICTIONAL POPULATION (1)

DATE: 12/3/2008

DATE	MALE POPULATION			FEMALE POPULATION			TOTAL POPULATION		
	Male Population	Net Change	Fiscal Y-T-D Average	Female Population	Net Change	Fiscal Y-T-D Average	Total Population	Net Change	Fiscal Y-T-D Average
<b>11-30-08</b>	<b>20,861</b>	<b>41</b>	<b>35</b>	<b>2,323</b>	<b>-17</b>	<b>4</b>	<b>23,184</b>	<b>24</b>	<b>39</b>
10-31-08	20,820	85		2,340	9		23,160	94	
09-30-08	20,735	-33		2,331	27		23,066	-6	
08-31-08	20,768	87		2,304	-10		23,072	77	
07-31-08	20,681	-3		2,314	9		22,995	6	
<b>06-30-08</b>	<b>20,684</b>	<b>-48</b>		<b>2,305</b>	<b>-12</b>		<b>22,989</b>	<b>-60</b>	
05-31-08	20,732	29		2,317	-27		23,049	2	
04-30-08	20,703	65		2,344	-11		23,047	54	
03-31-08	20,638	112		2,355	19		22,993	131	
02-29-08	20,526	51		2,336	-3		22,862	48	
01-31-08	20,475	98		2,339	-19		22,814	79	
12-31-07	20,377	-60	<b>42</b>	2,358	-1	<b>-3</b>	22,735	-61	<b>39</b>
11-30-07	20,437	94		2,359	29		22,796	123	
10-31-07	20,343	85		2,330	2		22,673	87	
09-30-07	20,258	-4		2,328	6		22,586	2	
08-31-07	20,262	107		2,322	-14		22,584	93	
07-31-07	20,155	-23		2,336	-5		22,491	-28	
<b>06-30-07</b>	<b>20,178</b>	<b>41</b>		<b>2,341</b>	<b>9</b>		<b>22,519</b>	<b>50</b>	
05-31-07	20,137	-39		2,332	-3		22,469	-42	
04-30-07	20,176	21		2,335	29		22,511	50	
03-31-07	20,155	75		2,306	-17		22,461	58	
02-28-07	20,080	7		2,323	1		22,403	8	
01-31-07	20,073	43		2,322	2		22,395	45	
12-31-06	20,030	12	<b>32</b>	2,320	6	<b>10</b>	22,350	18	<b>42</b>
11-30-06	20,018	44		2,314	11		22,332	55	
10-31-06	19,974	46		2,303	28		22,277	74	
09-30-06	19,928	139		2,275	33		22,203	172	
08-31-06	19,789	-34		2,242	-7		22,031	-41	
07-31-06	19,823	31		2,249	29		22,072	60	
<b>06-30-06</b>	<b>19,792</b>		<b>97</b>	<b>2,220</b>		<b>12</b>	<b>22,012</b>		<b>109</b>
<b>06-30-05</b>	<b>18,631</b>		<b>68</b>	<b>2,073</b>		<b>27</b>	<b>20,704</b>		<b>95</b>
<b>06-30-04</b>	<b>17,814</b>		<b>49</b>	<b>1,755</b>		<b>11</b>	<b>19,569</b>		<b>60</b>
<b>06-30-03</b>	<b>17,226</b>		<b>57</b>	<b>1,620</b>		<b>10</b>	<b>18,846</b>		<b>67</b>
<b>06-30-02</b>	<b>16,539</b>		<b>87</b>	<b>1,506</b>		<b>14</b>	<b>18,045</b>		<b>101</b>
<b>06-30-01</b>	<b>15,493</b>		<b>63</b>	<b>1,340</b>		<b>6</b>	<b>16,833</b>		<b>70</b>
<b>06-30-00</b>	<b>14,733</b>		<b>99</b>	<b>1,266</b>		<b>7</b>	<b>15,999</b>		<b>106</b>
<b>06-30-99</b>	<b>13,547</b>		<b>75</b>	<b>1,179</b>		<b>14</b>	<b>14,726</b>		<b>89</b>
<b>06-30-98</b>	<b>12,647</b>			<b>1,016</b>			<b>13,663</b>		

(1) Adult inmate jurisdictional population includes on-grounds, off-grounds, out-of-state, escapees, and jail backlog and excludes offenders sentenced to the Youthful Offender System (Y.O.S.).

**COLORADO DEPARTMENT OF CORRECTIONS**  
**ADULT INMATE RELEASES FROM PRISON**  
**TOTAL Population (Male and Female)**

Date: 12/3/2008

	Parole				Discharge					Other				Total
	Discretionary*	Mandatory*	Mand. Repar.*	Com. Supv.	Sentence	H.B. 1087	Martin/Cooper	Chgs/Det.	Com Spv. Elim	Probation	Ct. Ord. Dsch.	Appeal Bond	Deceased	
Nov-08	456	144	86	0	37	45	5	16	0	7	8	0	0	804
Oct-08	444	211	83	0	34	51	3	25	0	17	13	0	6	887
Sep-08	426	184	93	0	35	63	6	31	0	12	10	1	5	866
Aug-08	412	164	110	0	40	59	6	15	0	10	4	0	2	822
Jul-08	506	233	126	0	30	49	6	17	0	15	6	0	4	992
FYTD-Avg.	449	187	100	0	35	53	5	21	0	12	8	0	3	874
FY 2008-Avg.	466	186	88	0	34	56	8	17	0	12	11	0	4	881
FY 2007-Avg.	422	198	89	0	31	50	10	16	0	13	9	0	4	843
FY 2006-Avg.	234	266	98	0	38	50	13	15	0	16	10	0	5	746

Definitions of Release Types

**Discretionary parole**-Released to parole through Parole Board discretion prior to mandatory release or sentence discharge date.

**Mandatory parole**-Released to parole on mandatory release date.

**Mand. Repar**-Reparoled on specific date set by Parole Board (includes S.B. 252 reparoles). n/a - breakout not available prior to June 2004.

**Com. Supv.**-Released to serve 12 months of community supervision.

**Sentence discharge**-Completion of sentence with no further supervision.

**H.B. 1087 discharge**-Completion of sentence with no further supervision, subject to earn time provisions of H.B. 95-1087.

**Martin/ Cooper discharge**-Completion of sentence with no further supervision, sex offender subject to Martin/Cooper Supreme Court decision.

**Chgs/ Det. discharge**-Completion of sentence, released to other law enforcement for pending charges or detainers.

**Com. Spv. Elim discharge**-Completion of sentence following reincarceration on community supervision sentence.

**Probation**-Released by court to probation.

**Ct. Ord. Dsch.**-Released by court order.

**Appeal Bond**-Released by court to appeal bond.

**Deceased**-Offender death in prison.

**\*Due to the decrease in community transportation services, the Department implemented a procedural change in December 2005 with regards to releasing inmates on weekends. As a result of this change, discretionary releases have increased and mandatory releases have decreased.**

**COLORADO DEPARTMENT OF CORRECTIONS**  
ADULT INMATE RELEASES FROM PRISON

Date: 12/3/2008

**Male Population Only**

	Parole				Discharge					Other				Total
	Discretionary*	Mandatory*	Mand. Repar.*	Com. Supv.	Sentence	H.B. 1087	Martin/Cooper	Chgs/Det.	Com Spv. Elim	Probation	Ct. Ord. Dsch.	Appeal Bond	Deceased	
Nov-08	389	132	73	0	34	39	5	14	0	5	8	0	0	699
Oct-08	388	183	75	0	32	46	3	22	0	15	13	0	6	783
Sep-08	372	165	87	0	30	60	6	26	0	11	10	1	4	772
Aug-08	338	147	89	0	37	52	6	14	0	8	4	0	1	696
Jul-08	444	207	102	0	30	46	6	15	0	13	6	0	4	873
FYTD-Avg.	386	167	85	0	33	49	5	18	0	10	8	0	3	765
FY 2008-Avg.	397	162	76	0	32	48	8	16	0	10	9	0	4	762
FY 2007-Avg.	359	175	77	0	29	45	9	15	0	11	8	0	4	733
FY 2006-Avg.	196	233	84	0	35	46	13	14	0	15	9	0	5	648

**Female Population Only**

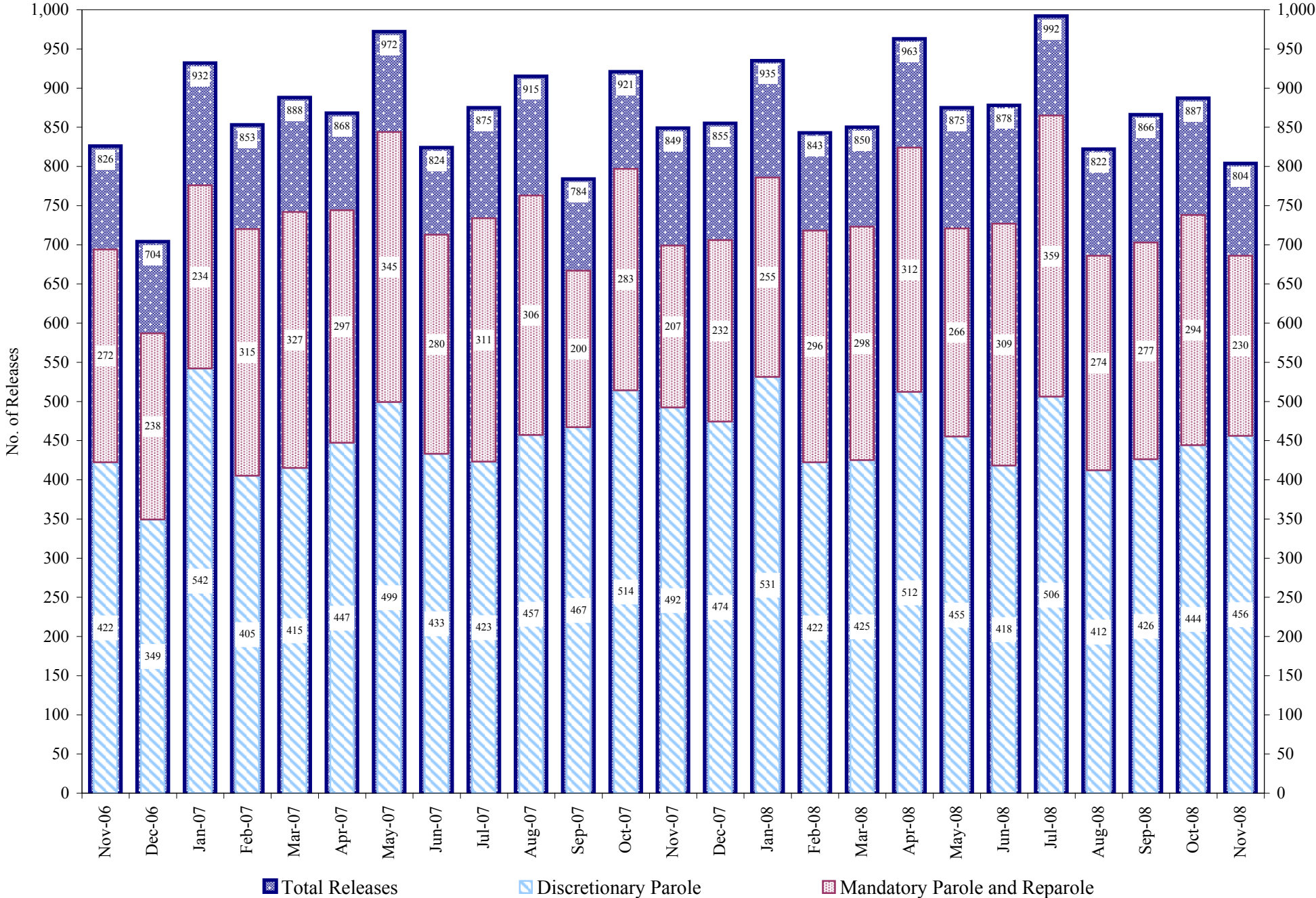
	Parole				Discharge					Other				Total
	Discretionary*	Mandatory*	Mand. Repar.*	Com. Supv.	Sentence	H.B. 1087	Martin/Cooper	Chgs/Det.	Com Spv. Elim	Probation	Ct. Ord. Dsch.	Appeal Bond	Deceased	
Nov-08	67	12	13	0	3	6	0	2	0	2	0	0	0	105
Oct-08	56	28	8	0	2	5	0	3	0	2	0	0	0	104
Sep-08	54	19	6	0	5	3	0	5	0	1	0	0	1	94
Aug-08	74	17	21	0	3	7	0	1	0	2	0	0	1	126
Jul-08	62	26	24	0	0	3	0	2	0	2	0	0	0	119
FYTD-Avg.	63	20	14	0	3	5	0	3	0	2	0	0	0	110
FY 2008-Avg.	69	23	12	0	2	7	0	2	0	2	2	0	0	119
FY 2007-Avg.	63	23	11	0	2	6	0	1	0	2	1	0	0	109
FY 2006-Avg.	39	34	14	0	3	5	0	1	0	2	1	0	0	98

Definitions of Release Types

See previous page.

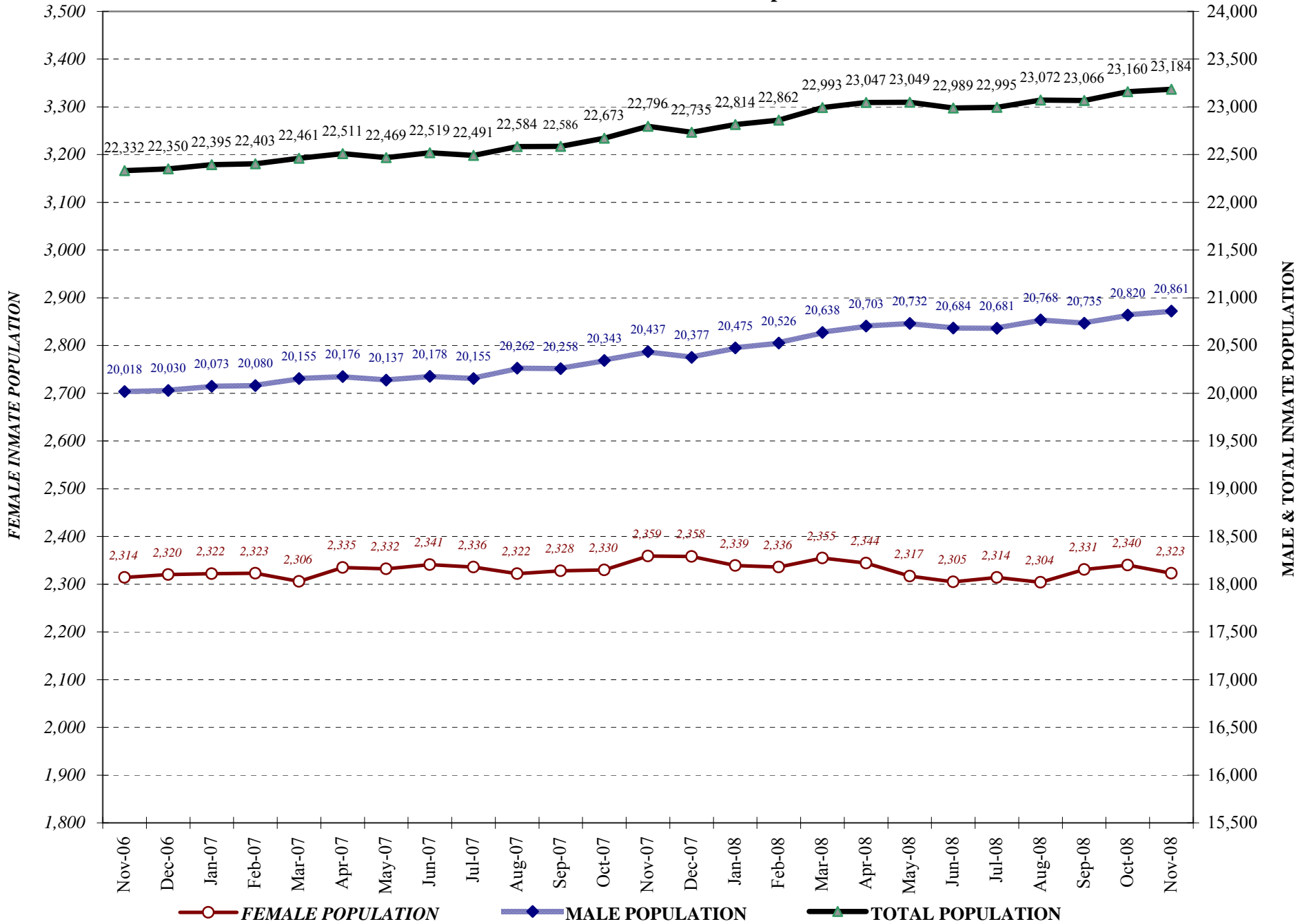
# COLORADO DEPARTMENT OF CORRECTIONS

## Adult Prison Releases



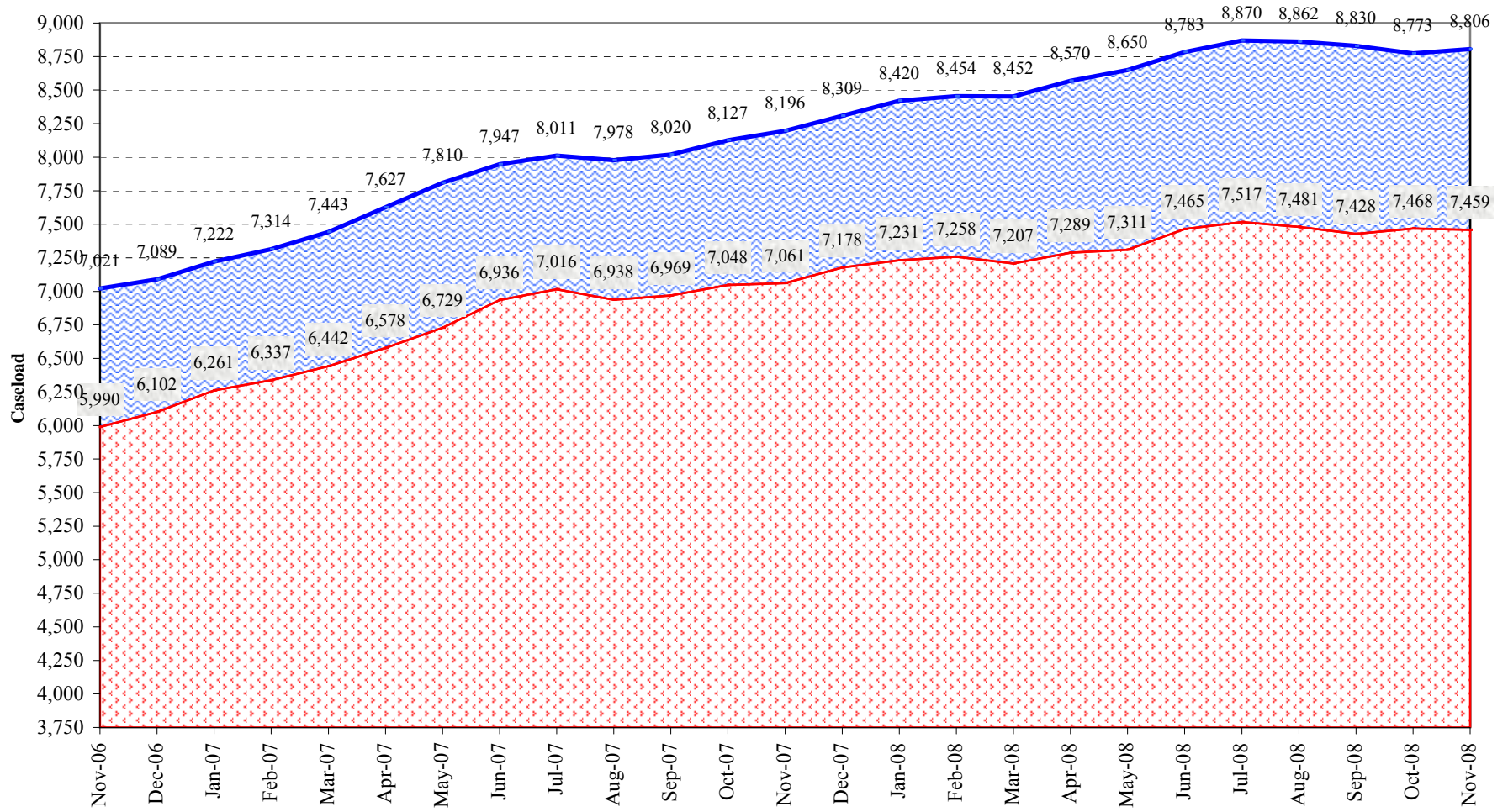
Total releases include releases to discretionary parole, mandatory parole and reparole, all types of discharges and other releases as detailed on the previous two pages.

## COLORADO DEPARTMENT OF CORRECTIONS Adult Jurisdictional Inmate Population





## COLORADO DEPARTMENT OF CORRECTIONS Parole Population



■ TOTAL CASELOAD (including ISP)

■ REGULAR\* CASELOAD

\* Regular caseload includes interstate parole, but excludes out-of-state parolees and absconders.