

**COLORADO DEPARTMENT OF CORRECTIONS
MONTHLY POPULATION AND CAPACITY REPORT
AS OF OCTOBER 31, 2008**

5-Nov-08

	10/31/2008	10/31/08			10/31/07	
	OPERATIONAL CAPACITY*	ON-GRDS POPULATION	OFF-GRDS POPULATION	TOTAL POPULATION	OPERATIONAL CAPACITY*	ON-GRDS POPULATION
COLO STATE PENITENTIARY	756	747	8	755	756	756
CENTENNIAL CORR FAC	336	310	0	310	336	321
STERLING CORR FAC	2,545	2,459	26	2,485	2,545	2,511
LIMON CORR FAC	953	941	8	949	953	919
ARK VALLEY CORR FAC	1,007	997	13	1,010	1,007	1,006
BUENA VISTA CORR FAC	926	904	14	918	926	910
BUENA VISTA MIN CTR	292	287	6	293	292	285
COLO TERR CORR FAC	944	925	11	936	936	770
FORT LYON CORR FAC	500	482	11	493	500	477
FREMONT CORR FAC	1,661	1,655	19	1,674	1,660	1,459
LA VISTA CORR FAC	519	461	12	473	519	482
ARROWHEAD CORR CTR	494	490	2	492	494	490
FOUR MILE CORR CTR	499	495	3	498	499	496
TRINIDAD CORR FAC	484	481	5	486	484	476
S.T.U. at Y.O.S.	30	30	0	30	30	26
SKYLINE CORR CTR	249	244	1	245	249	247
COLORADO CORR CTR	150	149	1	150	150	150
DELTA CORR CTR	484	466	5	471	484	477
RIFLE CORR CTR	192	187	0	187	192	190
COLO CORR ALT PROGRAM	100	71	5	76	100	95
COLO WOMEN'S CORR FAC	224	215	0	215	224	201
DENVER WOMEN'S CORR FAC	866	783	9	792	900	758
DENVER REC DIAG CTR	480	424	18	442	480	477
SAN CARLOS CORR FAC	255	245	6	251	255	250
SUBTOTAL	14,946	14,448	183	14,631	14,971	14,229
CONTRACTS:						
BENT COUNTY CORR CTR		959	23	982	724	704
HUERFANO COUNTY CORR CTR		723	17	740	774	726
CROWLEY COUNTY CORR FAC		1,629	25	1,654	1,720	1,605
KIT CARSON COUNTY CORR FAC		1,051	15	1,066	820	785
CHEYENNE MTN REENTRY CTR		656	1	657	500	497
HIGH PLAINS CORR FAC		251	4	255	270	235
NORTH FORK OK CORR FAC				0	480	479
OFF-GROUNDS POPULATION:			268			264
ESCAPEES/WALKAWAYS				226		232
REVOCATIONS-JAIL				0		1
JAIL BACKLOG:						
BACKLOG LESS THAN 72 HOURS			62		60	
BACKLOG GREATER THAN 72 HOURS (FISCAL YTD AVE = 132)			46		0	
BACKLOG-PAROLEES AWAITING TRANSFER			39		58	
TOTAL JAIL BACKLOG			147			118
COUNTY JAIL CONTRACTS			10			91
COMMUNITY CORRECTIONS						
COMMUNITY						
RESIDENTIAL		1,467		1,467	1,394	1,394
NON-RESIDENTIAL			89	89	83	83
PAROLE REVOCATIONS				0	0	0
REVOKED-RET TO CUST		223	55	278	256	256
REGRESSIONS			46	46	40	40
TOTAL COMMUNITY		1,690	190	1,880	1,773	1,773
ISP						
RESIDENTIAL		864		864	891	891
NON-RESIDENTIAL			45	45	38	38
REGRESSIONS			3	3	5	5
TOTAL ISP		864	48	912	934	934
TOTAL COMM. CORRECTIONS		2,554	238	2,792	2,707	2,707
MALE POPULATION				20,820		20,343
FEMALE POPULATION				2,340		2,330
TOTAL INMATE JURISDICTIONAL POPULATION				23,160		22,673

*OPERATIONAL CAPACITY INCLUDES ALL BEDS AVAILABLE FOR USE, INCLUDING MANAGEMENT CONTROL UNITS, BUT EXCLUDES EMERGENCY DOUBLE BUNKING

**COLORADO DEPARTMENT OF CORRECTIONS
MONTHLY POPULATION AND CAPACITY REPORT
AS OF OCTOBER 31, 2008**

5-Nov-08

CURRENT MONTH CHANGES IN CAPACITY:

None

NET MONTHLY GROWTH RATE:

CURRENT MONTH	94
FISCAL YEAR-TO-DATE AVERAGE	43

YOUTHFUL OFFENDER SYSTEM

	----- 10/31/08 -----			10/31/07
	PUEBLO	COMM. CORR.	TOTAL POPULATION	TOTAL POPULATION
INTAKE/IDO	8		8	2
RFP/REMEDICATION	12		12	13
PHASE I	149		149	143
PHASE II	9		9	16
PHASE III		41	41	32
OFF GROUNDS/BACKLOG			5	3
TOTAL Y.O.S. POPULATION	178	41	224	209

	CURRENT MONTH	FISCAL YR. TO DATE
YOS ADMISSIONS	6	22
YOS RELEASES:		
COMPLETION OF SENTENCE	5	14
JUDICIAL RELEASE TO PROB/CT ORD DISCHG	0	0
JUDICIAL TRANSFER TO DOC	0	0
TERMINATION/FAILURE	2	3
DECEASED	0	0
TOTAL RELEASES	7	17

PAROLE CASELOAD

	----- 10/31/08 -----			----- 09/30/08 -----		----- 10/31/07 -----	
	DOMESTIC	INTERST PAR/PROB	TOTAL CASELOAD	DOMESTIC	TOTAL CASELOAD	DOMESTIC	TOTAL CASELOAD
DENVER REGION							
REGULAR	2,657	84	2,741	2,683	2,765	2,544	2,656
ISP	613		613	635	635	456	456
SUBTOTAL	3,270	84	3,354	3,318	3,400	3,000	3,112
NORTHEAST REGION							
REGULAR	1,963	98	2,061	1,976	2,075	1,904	1,950
ISP	296		296	309	309	239	239
SUBTOTAL	2,259	98	2,357	2,285	2,384	2,143	2,189
SOUTHEAST REGION							
REGULAR	1,807	76	1,883	1,771	1,845	1,670	1,761
ISP	312		312	335	335	274	274
SUBTOTAL	2,119	76	2,195	2,106	2,180	1,944	2,035
WESTERN REGION							
REGULAR	740	43	783	698	743	641	681
ISP	84		84	123	123	110	110
SUBTOTAL	824	43	867	821	866	751	791
TOTAL CASELOAD							
REGULAR	7,167	301	7,468	7,128	7,428	6,759	7,048
ISP	1,305		1,305	1,402	1,402	1,079	1,079
TOTAL	8,472	301	8,773	8,530	8,830	7,838	8,127
ADDITIONAL CASELOAD:							
OUT-OF-STATE PAROLEES			1,971		1,953		1,867
PAROLEE ABSCONDERS		830			806		864

COLORADO DEPARTMENT OF CORRECTIONS
ADULT INMATE JURISDICTIONAL POPULATION (1)

DATE: 11/5/2008

DATE	MALE POPULATION			FEMALE POPULATION			TOTAL POPULATION		
	Male Population	Net Change	Fiscal Y-T-D Average	Female Population	Net Change	Fiscal Y-T-D Average	Total Population	Net Change	Fiscal Y-T-D Average
10-31-08	20,820	85	34	2,340	9	9	23,160	94	43
09-30-08	20,735	-33		2,331	27		23,066	-6	
08-31-08	20,768	87		2,304	-10		23,072	77	
07-31-08	20,681	-3		2,314	9		22,995	6	
06-30-08	20,684	-48		2,305	-12		22,989	-60	
05-31-08	20,732	29		2,317	-27		23,049	2	
04-30-08	20,703	65		2,344	-11		23,047	54	
03-31-08	20,638	112		2,355	19		22,993	131	
02-29-08	20,526	51		2,336	-3		22,862	48	
01-31-08	20,475	98		2,339	-19		22,814	79	
12-31-07	20,377	-60	42	2,358	-1	-3	22,735	-61	39
11-30-07	20,437	94		2,359	29		22,796	123	
10-31-07	20,343	85		2,330	2		22,673	87	
09-30-07	20,258	-4		2,328	6		22,586	2	
08-31-07	20,262	107		2,322	-14		22,584	93	
07-31-07	20,155	-23		2,336	-5		22,491	-28	
06-30-07	20,178	41		2,341	9		22,519	50	
05-31-07	20,137	-39		2,332	-3		22,469	-42	
04-30-07	20,176	21		2,335	29		22,511	50	
03-31-07	20,155	75		2,306	-17		22,461	58	
02-28-07	20,080	7		2,323	1		22,403	8	
01-31-07	20,073	43		2,322	2		22,395	45	
12-31-06	20,030	12	32	2,320	6	10	22,350	18	42
11-30-06	20,018	44		2,314	11		22,332	55	
10-31-06	19,974	46		2,303	28		22,277	74	
09-30-06	19,928	139		2,275	33		22,203	172	
08-31-06	19,789	-34		2,242	-7		22,031	-41	
07-31-06	19,823	31		2,249	29		22,072	60	
06-30-06	19,792		97	2,220		12	22,012		109
06-30-05	18,631		68	2,073		27	20,704		95
06-30-04	17,814		49	1,755		11	19,569		60
06-30-03	17,226		57	1,620		10	18,846		67
06-30-02	16,539		87	1,506		14	18,045		101
06-30-01	15,493		63	1,340		6	16,833		70
06-30-00	14,733		99	1,266		7	15,999		106
06-30-99	13,547		75	1,179		14	14,726		89
06-30-98	12,647			1,016			13,663		

(1) Adult inmate jurisdictional population includes on-grounds, off-grounds, out-of-state, escapees, and jail backlog and excludes offenders sentenced to the Youthful Offender System (Y.O.S.).

COLORADO DEPARTMENT OF CORRECTIONS
ADULT INMATE RELEASES FROM PRISON
TOTAL Population (Male and Female)

Date: 11/5/2008

	Parole				Discharge					Other				Total
	Discretionary*	Mandatory*	Mand. Repar.*	Com. Supv.	Sentence	H.B. 1087	Martin/Cooper	Chgs/Det.	Com Spv. Elim	Probation	Ct. Ord. Dsch.	Appeal Bond	Deceased	
Oct-08	444	211	83	0	34	51	3	25	0	17	13	0	6	887
Sep-08	426	184	93	0	35	63	6	31	0	12	10	1	5	866
Aug-08	412	164	110	0	40	59	6	15	0	10	4	0	2	822
Jul-08	506	233	126	0	30	49	6	17	0	15	6	0	4	992
FYTD-Avg.	447	198	103	0	35	56	5	22	0	14	8	0	4	892
FY 2008-Avg.	466	186	88	0	34	56	8	17	0	12	11	0	4	881
FY 2007-Avg.	422	198	89	0	31	50	10	16	0	13	9	0	4	843
FY 2006-Avg.	234	266	98	0	38	50	13	15	0	16	10	0	5	746

Definitions of Release Types

Discretionary parole-Released to parole through Parole Board discretion prior to mandatory release or sentence discharge date.

Mandatory parole-Released to parole on mandatory release date.

Mand. Repar-Reparoled on specific date set by Parole Board (includes S.B. 252 reparoles). n/a - breakout not available prior to June 2004.

Com. Supv.-Released to serve 12 months of community supervision.

Sentence discharge-Completion of sentence with no further supervision.

H.B. 1087 discharge-Completion of sentence with no further supervision, subject to earn time provisions of H.B. 95-1087.

Martin/ Cooper discharge-Completion of sentence with no further supervision, sex offender subject to Martin/Cooper Supreme Court decision.

Chgs/ Det. discharge-Completion of sentence, released to other law enforcement for pending charges or detainees.

Com. Spv. Elim discharge-Completion of sentence following reincarceration on community supervision sentence.

Probation-Released by court to probation.

Ct. Ord. Dsch.-Released by court order.

Appeal Bond-Released by court to appeal bond.

Deceased-Offender death in prison.

*Due to the decrease in community transportation services, the Department implemented a procedural change in December 2005 with regards to releasing inmates on weekends. As a result of this change, discretionary releases have increased and mandatory releases have decreased.

COLORADO DEPARTMENT OF CORRECTIONS
ADULT INMATE RELEASES FROM PRISON

Date: 11/5/2008

Male Population Only

	Parole				Discharge					Other				Total
	Discretionary*	Mandatory*	Mand. Repar.*	Com. Supv.	Sentence	H.B. 1087	Martin/Cooper	Chgs/Det.	Com Spv. Elim	Probation	Ct. Ord. Dsch.	Appeal Bond	Deceased	
Oct-08	388	183	75	0	32	46	3	22	0	15	13	0	6	783
Sep-08	372	165	87	0	30	60	6	26	0	11	10	1	4	772
Aug-08	338	147	89	0	37	52	6	14	0	8	4	0	1	696
Jul-08	444	207	102	0	30	46	6	15	0	13	6	0	4	873
FYTD-Avg.	386	176	88	0	32	51	5	19	0	12	8	0	4	781
FY 2008-Avg.	397	162	76	0	32	48	8	16	0	10	9	0	4	762
FY 2007-Avg.	359	175	77	0	29	45	9	15	0	11	8	0	4	733
FY 2006-Avg.	196	233	84	0	35	46	13	14	0	15	9	0	5	648

Female Population Only

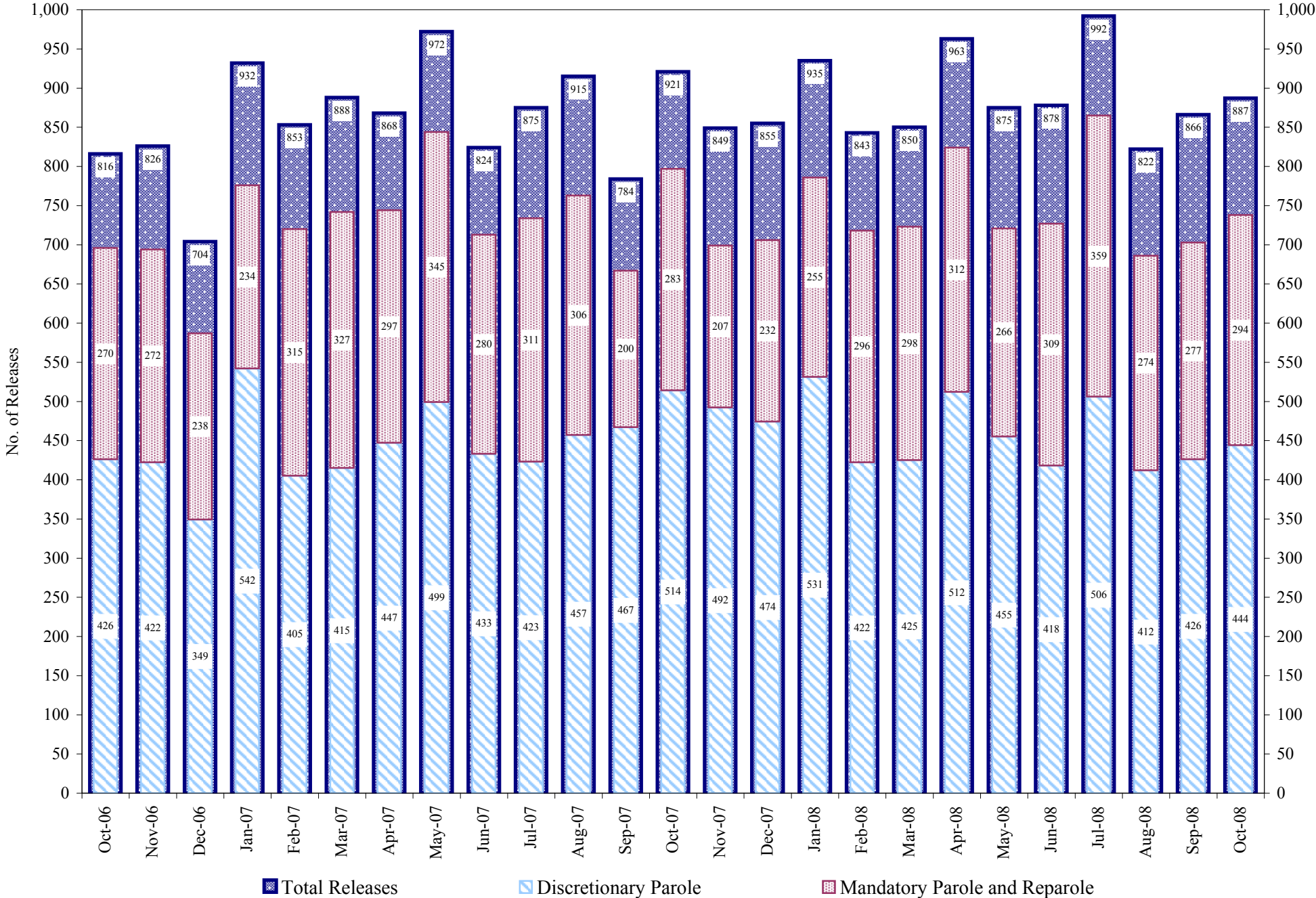
	Parole				Discharge					Other				Total
	Discretionary*	Mandatory*	Mand. Repar.*	Com. Supv.	Sentence	H.B. 1087	Martin/Cooper	Chgs/Det.	Com Spv. Elim	Probation	Ct. Ord. Dsch.	Appeal Bond	Deceased	
Oct-08	56	28	8	0	2	5	0	3	0	2	0	0	0	104
Sep-08	54	19	6	0	5	3	0	5	0	1	0	0	1	94
Aug-08	74	17	21	0	3	7	0	1	0	2	0	0	1	126
Jul-08	62	26	24	0	0	3	0	2	0	2	0	0	0	119
FYTD-Avg.	62	23	15	0	3	5	0	3	0	2	0	0	1	111
FY 2008-Avg.	69	23	12	0	2	7	0	2	0	2	2	0	0	119
FY 2007-Avg.	63	23	11	0	2	6	0	1	0	2	1	0	0	109
FY 2006-Avg.	39	34	14	0	3	5	0	1	0	2	1	0	0	98

Definitions of Release Types

See previous page.

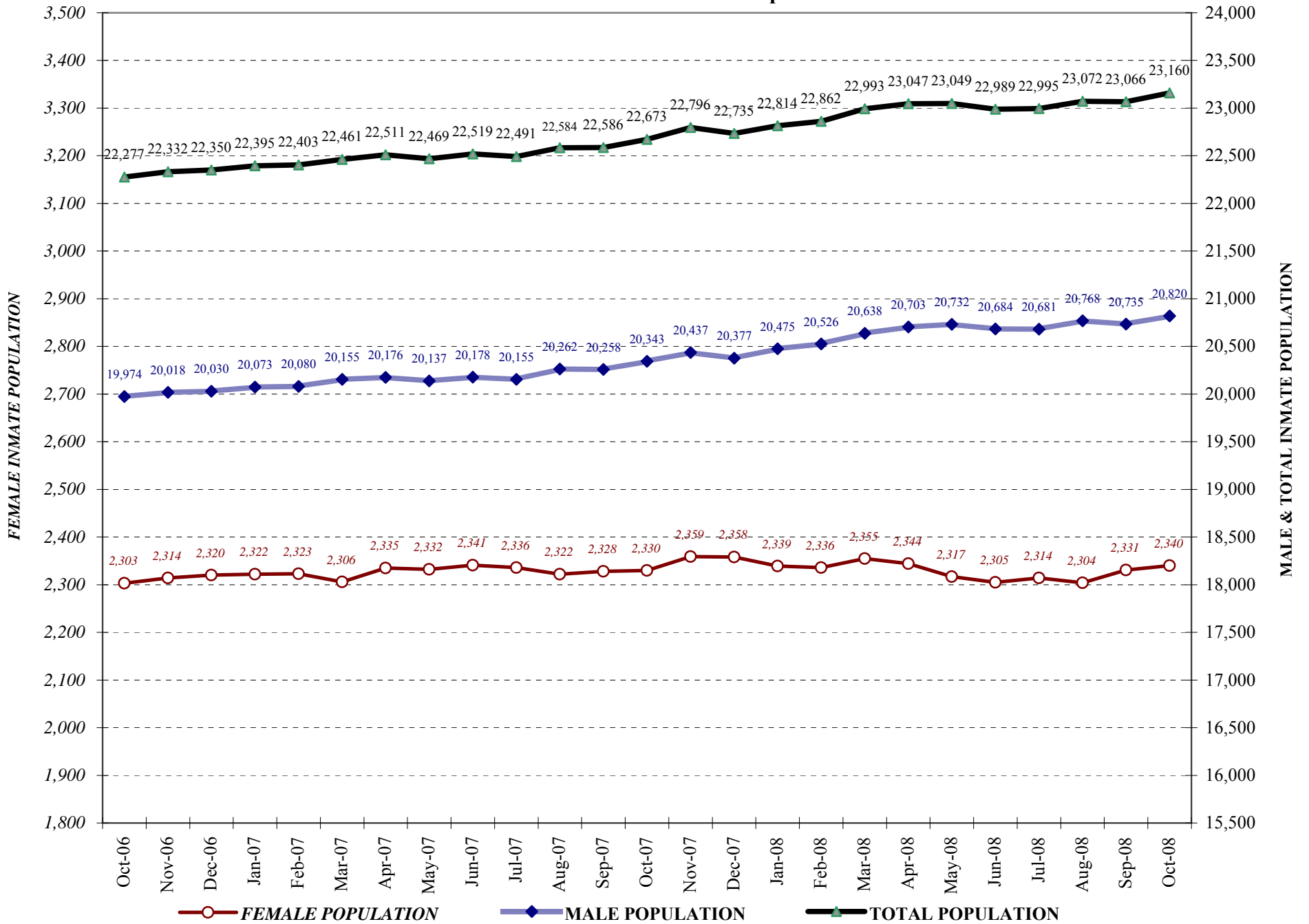
COLORADO DEPARTMENT OF CORRECTIONS

Adult Prison Releases

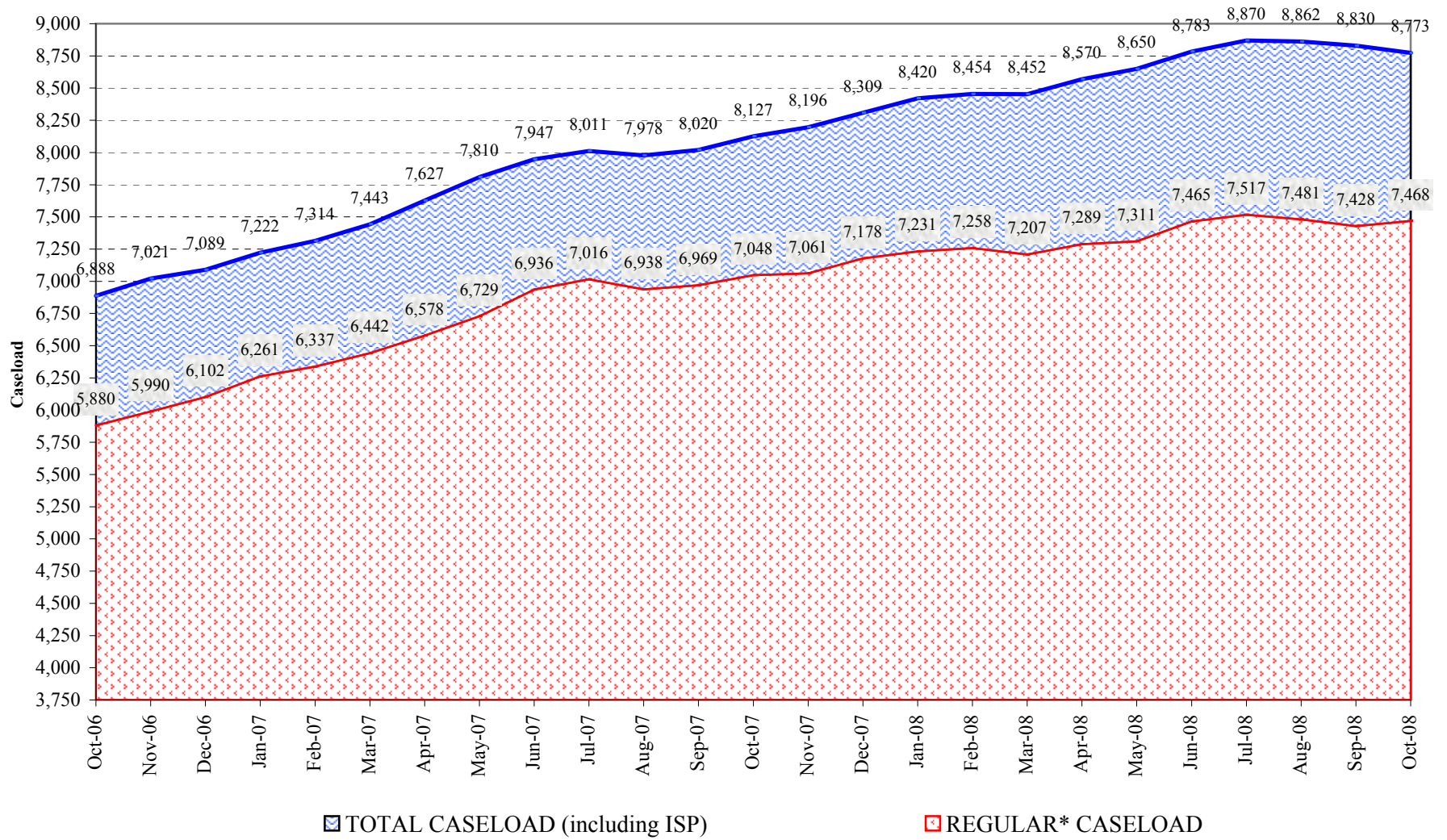


Total releases include releases to discretionary parole, mandatory parole and reparole, all types of discharges and other releases as detailed on the previous two pages.

COLORADO DEPARTMENT OF CORRECTIONS Adult Jurisdiction Inmate Population



COLORADO DEPARTMENT OF CORRECTIONS Parole Population



* Regular caseload includes interstate parole, but excludes out-of-state parolees and absconders.