

**COLORADO DEPARTMENT OF CORRECTIONS
MONTHLY POPULATION AND CAPACITY REPORT
AS OF AUGUST 31, 2008**

4-Sep-08

	07/31/08	CAPACITY CHANGES	----- 08/31/08 -----		----- 08/31/07 -----	
	OPERATIONAL CAPACITY*		OPERATIONAL CAPACITY*	ON-GRDS POPULATION	OPERATIONAL CAPACITY*	ON-GRDS POPULATION
COLO STATE PENITENTIARY	756		756	715	756	751
CENTENNIAL CORR FAC	336		336	318	336	318
STERLING CORR FAC	2,545		2,545	2,522	2,545	2,490
LIMON CORR FAC	953		953	939	953	935
ARK VALLEY CORR FAC	1,007		1,007	1,001	1,007	998
BUENA VISTA CORR FAC	926		926	923	926	899
BUENA VISTA MIN CTR	292		292	285	292	272
COLO TERR CORR FAC	944		944	923	786	805
FORT LYON CORR FAC	500		500	481	500	478
FREMONT CORR FAC	1,661		1,661	1,656	1,471	1,470
LA VISTA CORR FAC	519		519	478	519	496
ARROWHEAD CORR CTR	494		494	492	494	491
FOUR MILE CORR CTR	499		499	493	499	492
TRINIDAD CORR FAC	484		484	474	484	475
S.T.U. at Y.O.S.	30		30	15	30	27
SKYLINE CORR CTR	249		249	248	249	244
COLORADO CORR CTR	150		150	150	150	149
DELTA CORR CTR	484		484	471	484	457
RIFLE CORR CTR	192		192	189	192	182
COLO CORR ALT PROGRAM	100		100	90	100	100
COLO WOMEN'S CORR FAC	224		224	207	224	209
DENVER WOMEN'S CORR FAC	866		866	775	900	781
DENVER REC DIAG CTR	480	-96	384	370	480	440
SAN CARLOS CORR FAC	255		255	245	255	248
SUBTOTAL	14,946	-96	14,850	14,460	14,632	14,207
CONTRACTS:						
BENT COUNTY CORR CTR	1,466		1,466	968	724	691
HUERFANO COUNTY CORR CTR	774		774	747	774	740
CROWLEY COUNTY CORR FAC	1,720		1,720	1,614	1,720	1,561
KIT CARSON COUNTY CORR FAC	1,562		1,562	1,060	820	793
CHEYENNE MTN REENTRY CTR	672		672	605	500	492
HIGH PLAINS CORR FAC	280		280	242	270	236
NORTH FORK OK CORR FAC	0		0	0	480	479
OFF-GROUNDS POPULATION:				268		259
ESCAPEES/WALKAWAYS				227		229
REVOCATIONS-JAIL				0		1
JAIL BACKLOG:						
BACKLOG LESS THAN 72 HOURS			76		47	
BACKLOG GREATER THAN 72 HOURS (FISCAL YTD AVE = 148)			75		0	
BACKLOG-PAROLEES AWAITING TRANSFER			34		22	
TOTAL JAIL BACKLOG				185		69
COUNTY JAIL CONTRACTS				32		84
COMMUNITY CORRECTIONS						
COMMUNITY						
RESIDENTIAL	1,354	61	1,415	1,415	1,431	1,431
PAROLE REVOCATIONS	2	-2	0	0	1	1
REVOKED-RET TO CUST	223	16	239	239	245	245
NON-RESIDENTIAL	58	11	69	69	71	71
REGRESSIONS	52	-11	41	41	26	26
TOTAL COMMUNITY	1,689	75	1,764	1,764	1,774	1,774
ISP						
RESIDENTIAL	843	4	847	847	837	837
NON-RESIDENTIAL	51	-7	44	44	35	35
REGRESSIONS	12	-3	9	9	4	4
TOTAL ISP	906	-6	900	900	876	876
TOTAL COMM. CORRECTIONS	2,595	69	2,664	2,664	2,650	2,650
MALE POPULATION			20,768		20,155	
FEMALE POPULATION			2,304		2,336	
TOTAL INMATE JURISDICTIONAL POPULATION				23,072		22,491

*OPERATIONAL CAPACITY INCLUDES ALL BEDS AVAILABLE FOR USE, INCLUDING MANAGEMENT CONTROL UNITS, BUT EXCLUDES EMERGENCY DOUBLE BUNKING

**COLORADO DEPARTMENT OF CORRECTIONS
MONTHLY POPULATION AND CAPACITY REPORT
AS OF AUGUST 31, 2008**

		08/31/2008 Population			----- FINAL CUSTODY DESIGNATION* -----					
		On-Grds.	Off-Grds	Total	Uncls.	Ad.Seg	Close	Medium	Min.-Res.	Minimum
Male Population	COLO STATE PENITENTIARY	715	7	722		719	3			
	CENTENNIAL CORR FAC	318	1	319		22	293	2	1	1
	STERLING CORR FAC	2,522	24	2,546		280	750	503	561	452
	LIMON CORR FAC	939	12	951		15	667	198	51	20
	ARK VALLEY CORR FAC	1,001	12	1,013		9	416	356	169	63
	BUENA VISTA CORR FAC	923	10	933		7	356	372	128	70
	BUENA VISTA MIN CTR	285	4	289				3	214	72
	COLO TERR CORR FAC	923	15	938		6	249	307	229	147
	FORT LYON CORR FAC	481	13	494		2	23	202	185	82
	FREMONT CORR FAC	1,656	13	1,669		13	181	462	574	439
	ARROWHEAD CORR CTR	492	1	493				1	306	186
	FOUR MILE CORR CTR	493	3	496				1	354	141
	TRINIDAD CORR FAC	474	8	482					421	61
	S.T.U. at Y.O.S.	15	1	16				2	14	0
	SKYLINE CORR CTR	248	4	252					1	251
	COLORADO CORR CTR	150	0	150						150
	DELTA CORR CTR	471	3	474				2	1	471
	RIFLE CORR CTR	189	0	189					2	187
	COLO CORR ALT PROGRAM	83	5	88					1	87
	DENVER REC DIAG CTR	367	10	377	102	2	36	97	95	45
	SAN CARLOS CORR FAC	245	7	252		25	107	61	31	28
	CONTRACTS:									
	BENT COUNTY CORR CTR	968	13	981			9	480	331	161
	HUERFANO COUNTY CORR CTR	747	22	769			7	400	241	121
	CROWLEY COUNTY CORR FAC	1,614	37	1,651		7	9	794	614	227
	KIT CARSON COUNTY CORR FAC	1,060	13	1,073		1	5	528	326	213
	CHEYENNE MTN REENTRY CTR	605	6	611			5	125	277	204
	NORTH FORK OK CORR FAC	0	0	0						
	COMMUNITY/ISP	1,811	94	1,905			3	36	56	1,810
	Total Classified Male Population	19,795	338	20,133	102	1,108	3,119	4,932	5,183	5,689
Percent of Total				0.5%	5.5%	15.5%	24.5%	25.7%	28.3%	
Unclassified Facilities:										
JAIL BACKLOG/REVOCATIONS	159	0	159							
COUNTY JAIL CONTRACTS	32	0	32							
REVOKED TO JAIL	0	0	0							
REVOKED TO COMM CTR	0	0	0							
REVOKED-RET TO CUST FAC	173	41	214							
COMM/ISP REGRESSIONS	0	45	45							
ESCAPEES/WALKAWAYS	43	142	185							
Total Unclassified Facilities	407	228	635							
Total Male Population	20,202	566	20,768							
Female Population	COLO WOMEN'S CORR FAC	207	2	209			57	22	61	69
	DENVER WOMEN'S CORR FAC	775	7	782	4	29	135	129	283	202
	LA VISTA CORR FAC	478	7	485			30	93	221	141
	COLO CORR ALT PROGRAM	7	1	8						8
	DENVER REC DIAG CTR INF	3	1	4				1	1	2
	COLO TERR CORR FAC INF.	0	0	0						
	CONTRACTS:									
	HIGH PLAINS CORR FAC	242	6	248				15	158	75
	COMMUNITY/ISP	451	19	470				4	20	446
	Total Classified Female Population	2,163	43	2,206	4	29	222	264	744	943
	Percent of Total				0.2%	1.3%	10.1%	12.0%	33.7%	42.7%
	Unclassified Facilities:									
	JAIL BACKLOG	26	0	26						
COUNTY JAIL CONTRACTS	0	0	0							
REVOKED TO JAIL	0	0	0							
REVOKED TO COMM CTR	0	0	0							
REVOKED-RET TO CUST FAC	22	3	25							
COMM/ISP REGRESSIONS	0	5	5							
ESCAPEES/WALKAWAYS	5	37	42							
Total Unclassified Facilities	53	45	98							
Total Female Population	2,216	88	2,304							

COLORADO DEPARTMENT OF CORRECTIONS
ADULT INMATE JURISDICTIONAL POPULATION (1)

DATE: 9/4/2008

DATE	MALE POPULATION			FEMALE POPULATION			TOTAL POPULATION		
	Male Population	Net Change	Fiscal Y-T-D Average	Female Population	Net Change	Fiscal Y-T-D Average	Total Population	Net Change	Fiscal Y-T-D Average
08-31-08	20,768	87	42	2,304	-10	-1	23,072	77	42
07-31-08	20,681	-3		2,314	9		22,995	6	
06-30-08	20,684	-48		2,305	-12		22,989	-60	
05-31-08	20,732	29		2,317	-27		23,049	2	
04-30-08	20,703	65		2,344	-11		23,047	54	
03-31-08	20,638	112		2,355	19		22,993	131	
02-29-08	20,526	51		2,336	-3		22,862	48	
01-31-08	20,475	98		2,339	-19		22,814	79	
12-31-07	20,377	-60	42	2,358	-1	-3	22,735	-61	39
11-30-07	20,437	94		2,359	29		22,796	123	
10-31-07	20,343	85		2,330	2		22,673	87	
09-30-07	20,258	-4		2,328	6		22,586	2	
08-31-07	20,262	107		2,322	-14		22,584	93	
07-31-07	20,155	-23		2,336	-5		22,491	-28	
06-30-07	20,178	41		2,341	9		22,519	50	
05-31-07	20,137	-39		2,332	-3		22,469	-42	
04-30-07	20,176	21		2,335	29		22,511	50	
03-31-07	20,155	75		2,306	-17		22,461	58	
02-28-07	20,080	7		2,323	1		22,403	8	
01-31-07	20,073	43		2,322	2		22,395	45	
12-31-06	20,030	12	32	2,320	6	10	22,350	18	42
11-30-06	20,018	44		2,314	11		22,332	55	
10-31-06	19,974	46		2,303	28		22,277	74	
09-30-06	19,928	139		2,275	33		22,203	172	
08-31-06	19,789	-34		2,242	-7		22,031	-41	
07-31-06	19,823	31		2,249	29		22,072	60	
06-30-06	19,792		97	2,220		12	22,012		109
06-30-05	18,631		68	2,073		27	20,704		95
06-30-04	17,814		49	1,755		11	19,569		60
06-30-03	17,226		57	1,620		10	18,846		67
06-30-02	16,539		87	1,506		14	18,045		101
06-30-01	15,493		63	1,340		6	16,833		70
06-30-00	14,733		99	1,266		7	15,999		106
06-30-99	13,547		75	1,179		14	14,726		89
06-30-98	12,647			1,016			13,663		

(1) Adult inmate jurisdictional population includes on-grounds, off-grounds, out-of-state, escapees, and jail backlog and excludes offenders sentenced to the Youthful Offender System (Y.O.S.).

COLORADO DEPARTMENT OF CORRECTIONS
ADULT INMATE RELEASES FROM PRISON
TOTAL Population (Male and Female)

Date: 9/4/2008

	Parole				Discharge					Other				Total
	Discretionary*	Mandatory*	Mand. Repar.*	Com. Supv.	Sentence	H.B. 1087	Martin/Cooper	Chgs/Det.	Com Spv. Elim	Probation	Ct. Ord. Dsch.	Appeal Bond	Deceased	
Aug-08	412	164	110	0	40	59	6	15	0	10	4	0	2	822
Jul-08	506	233	126	0	30	49	6	17	0	15	6	0	4	992
Jun-08	418	209	100	0	37	62	9	16	0	15	9	0	3	878
May-08	455	188	78	0	38	63	6	14	0	14	14	0	5	875
Apr-08	512	219	93	0	36	51	5	19	0	15	9	0	4	963
Mar-08	425	182	116	0	27	52	8	22	0	5	10	0	3	850
Feb-08	422	214	82	0	35	49	3	17	0	9	6	1	5	843
Jan-08	531	179	76	0	33	66	10	21	0	6	9	0	4	935
Dec-07	474	157	75	0	35	55	10	17	0	17	7	0	8	855
Nov-07	492	154	53	0	29	56	11	16	0	21	14	0	3	849
Oct-07	514	185	98	0	24	55	11	12	0	12	8	0	2	921
Sep-07	467	153	47	0	39	41	6	9	0	5	13	1	3	784
Aug-07	457	192	114	0	34	54	8	21	0	16	14	0	5	915
Jul-07	423	196	115	0	34	58	6	22	0	7	10	0	4	875
Jun-07	433	188	92	0	19	49	13	11	0	9	8	0	2	824
May-07	499	216	129	0	31	43	7	20	0	14	9	0	4	972
Apr-07	447	197	100	0	26	51	9	16	0	6	10	0	6	868
Mar-07	415	187	140	0	33	64	4	14	0	14	13	1	3	888
Feb-07	405	235	80	0	24	58	12	19	0	15	5	0	0	853
Jan-07	542	192	42	0	37	59	5	15	0	15	16	0	9	932
Dec-06	349	179	59	0	27	44	10	14	0	13	6	1	2	704
Nov-06	422	202	70	0	30	45	12	12	0	16	11	0	6	826
Oct-06	426	186	84	0	36	44	11	10	0	6	7	1	5	816
Sep-06	348	180	65	0	29	44	13	15	0	13	7	0	2	716

Definitions of Release Types

Discretionary parole-Released to parole through Parole Board discretion prior to mandatory release or sentence discharge date.

Mandatory parole-Released to parole on mandatory release date.

Mand. Repar-Reparoled on specific date set by Parole Board (includes S.B. 252 reparoles). n/a - breakout not available prior to June 2004.

Com. Supv.-Released to serve 12 months of community supervision.

Sentence discharge-Completion of sentence with no further supervision.

H.B. 1087 discharge-Completion of sentence with no further supervision, subject to earn time provisions of H.B. 95-1087.

Martin/ Cooper discharge-Completion of sentence with no further supervision, sex offender subject to Martin/Cooper Supreme Court decision.

Chgs/ Det. discharge-Completion of sentence, released to other law enforcement for pending charges or detainees.

Com. Spv. Elim discharge-Completion of sentence following reincarceration on community supervision sentence.

Probation-Released by court to probation.

Ct. Ord. Dsch.-Released by court order.

Appeal Bond-Released by court to appeal bond.

Deceased-Offender death in prison.

***Due to the decrease in community transportation services, the Department implemented a procedural change in December 2005 with regards to releasing inmates on weekends. As a result of this change, discretionary releases have increased and mandatory releases have decreased.**

COLORADO DEPARTMENT OF CORRECTIONS
ADULT INMATE RELEASES FROM PRISON
Male Population Only

Date: 9/4/2008

	Parole				Discharge					Other				Total
	Discretionary*	Mandatory*	Mand. Repar.*	Com. Supv.	Sentence	H.B. 1087	Martin/Cooper	Chgs/Det.	Com Spv. Elim	Probation	Ct. Ord. Dsch.	Appeal Bond	Deceased	
Aug-08	338	147	89	0	37	52	6	14	0	8	4	0	1	696
Jul-08	444	207	102	0	30	46	6	15	0	13	6	0	4	873
Jun-08	370	187	89	0	36	57	9	14	0	13	7	0	2	784
May-08	372	166	63	0	37	54	6	12	0	12	14	0	5	741
Apr-08	440	181	82	0	35	45	5	17	0	15	7	0	3	830
Mar-08	367	167	98	0	25	46	8	19	0	5	9	0	2	746
Feb-08	362	189	72	0	34	43	3	16	0	7	4	1	5	736
Jan-08	445	156	64	0	31	59	10	16	0	5	6	0	4	796
Dec-07	401	141	66	0	31	45	10	16	0	16	7	0	8	741
Nov-07	425	133	49	0	25	50	11	14	0	14	13	0	3	737
Oct-07	432	154	84	0	23	48	11	12	0	11	7	0	2	784
Sep-07	413	131	41	0	36	35	6	8	0	4	13	1	3	691
Aug-07	377	170	104	0	29	46	8	20	0	14	10	0	5	783
Jul-07	360	171	94	0	34	52	6	20	0	7	6	0	4	754
Jun-07	366	172	79	0	18	45	12	11	0	8	8	0	2	721
May-07	432	194	110	0	30	37	7	18	0	11	9	0	3	851
Apr-07	382	179	90	0	24	47	8	15	0	4	8	0	6	763
Mar-07	344	166	118	0	28	56	4	14	0	10	13	0	3	756
Feb-07	330	209	71	0	23	51	11	16	0	14	5	0	0	730
Jan-07	453	169	37	0	34	53	5	15	0	14	13	0	7	800
Dec-06	298	160	56	0	24	38	10	14	0	13	6	1	2	622
Nov-06	358	178	62	0	28	42	12	12	0	13	10	0	6	721
Oct-06	373	163	73	0	34	36	11	9	0	6	6	1	5	717
Sep-06	300	148	59	0	29	40	13	12	0	12	7	0	2	622

Definitions of Release Types

Discretionary parole-Released to parole through Parole Board discretion prior to mandatory release or sentence discharge date.

Mandatory parole-Released to parole on mandatory release date.

Mand. Repar-Reparoled on specific date set by Parole Board (includes S.B. 252 reparoles). n/a - breakout not available prior to June 2004.

Com. Supv.-Released to serve 12 months of community supervision.

Sentence discharge-Completion of sentence with no further supervision.

H.B. 1087 discharge-Completion of sentence with no further supervision, subject to earn time provisions of H.B. 95-1087.

Martin/ Cooper discharge-Completion of sentence with no further supervision, sex offender subject to Martin/Cooper Supreme Court decision.

Chgs/ Det. discharge-Completion of sentence, released to other law enforcement for pending charges or detainees.

Com. Spv. Elim discharge-Completion of sentence following reincarceration on community supervision sentence.

Probation-Released by court to probation.

Ct. Ord. Dsch.-Released by court order.

Appeal Bond-Released by court to appeal bond.

Deceased-Offender death in prison.

***Due to the decrease in community transportation services, the Department implemented a procedural change in December 2005 with regards to releasing inmates on weekends. As a result of this change, discretionary releases have increased and mandatory releases have decreased.**

COLORADO DEPARTMENT OF CORRECTIONS
ADULT INMATE RELEASES FROM PRISON
Female Population Only

Date: 9/4/2008

	Parole				Discharge					Other				Total
	Discretionary*	Mandatory*	Mand. Repar.*	Com. Supv.	Sentence	H.B. 1087	Martin/Cooper	Chgs/Det.	Com Spv. Elim.	Probation	Ct. Ord. Dsch.	Appeal Bond	Deceased	
Aug-08	74	17	21	0	3	7	0	1	0	2	0	0	1	126
Jul-08	62	26	24	0	0	3	0	2	0	2	0	0	0	119
Jun-08	48	22	11	0	1	5	0	2	0	2	2	0	1	94
May-08	83	22	15	0	1	9	0	2	0	2	0	0	0	134
Apr-08	72	38	11	0	1	6	0	2	0	0	2	0	1	133
Mar-08	58	15	18	0	2	6	0	3	0	0	1	0	1	104
Feb-08	60	25	10	0	1	6	0	1	0	2	2	0	0	107
Jan-08	86	23	12	0	2	7	0	5	0	1	3	0	0	139
Dec-07	73	16	9	0	4	10	0	1	0	1	0	0	0	114
Nov-07	67	21	4	0	4	6	0	2	0	7	1	0	0	112
Oct-07	82	31	14	0	1	7	0	0	0	1	1	0	0	137
Sep-07	54	22	6	0	3	6	0	1	0	1	0	0	0	93
Aug-07	80	22	10	0	5	8	0	1	0	2	4	0	0	132
Jul-07	63	25	21	0	0	6	0	2	0	0	4	0	0	121
Jun-07	67	16	13	0	1	4	1	0	0	1	0	0	0	103
May-07	67	22	19	0	1	6	0	2	0	3	0	0	1	121
Apr-07	65	18	10	0	2	4	1	1	0	2	2	0	0	105
Mar-07	71	21	22	0	5	8	0	0	0	4	0	1	0	132
Feb-07	75	26	9	0	1	7	1	3	0	1	0	0	0	123
Jan-07	89	23	5	0	3	6	0	0	0	1	3	0	2	132
Dec-06	51	19	3	0	3	6	0	0	0	0	0	0	0	82
Nov-06	64	24	8	0	2	3	0	0	0	3	1	0	0	105
Oct-06	53	23	11	0	2	8	0	1	0	0	1	0	0	99
Sep-06	48	32	6	0	0	4	0	3	0	1	0	0	0	94

Definitions of Release Types

Discretionary parole-Released to parole through Parole Board discretion prior to mandatory release or sentence discharge date.

Mandatory parole-Released to parole on mandatory release date.

Mand. Repar-Reparoled on specific date set by Parole Board (includes S.B. 252 reparoles). n/a - breakout not available prior to June 2004.

Com. Supv.-Released to serve 12 months of community supervision.

Sentence discharge-Completion of sentence with no further supervision.

H.B. 1087 discharge-Completion of sentence with no further supervision, subject to earn time provisions of H.B. 95-1087.

Martin/ Cooper discharge-Completion of sentence with no further supervision, sex offender subject to Martin/Cooper Supreme Court decision.

Chgs/ Det. discharge-Completion of sentence, released to other law enforcement for pending charges or detainees.

Com. Spv. Elim discharge-Completion of sentence following reincarceration on community supervision sentence.

Probation-Released by court to probation.

Ct. Ord. Dsch.-Released by court order.

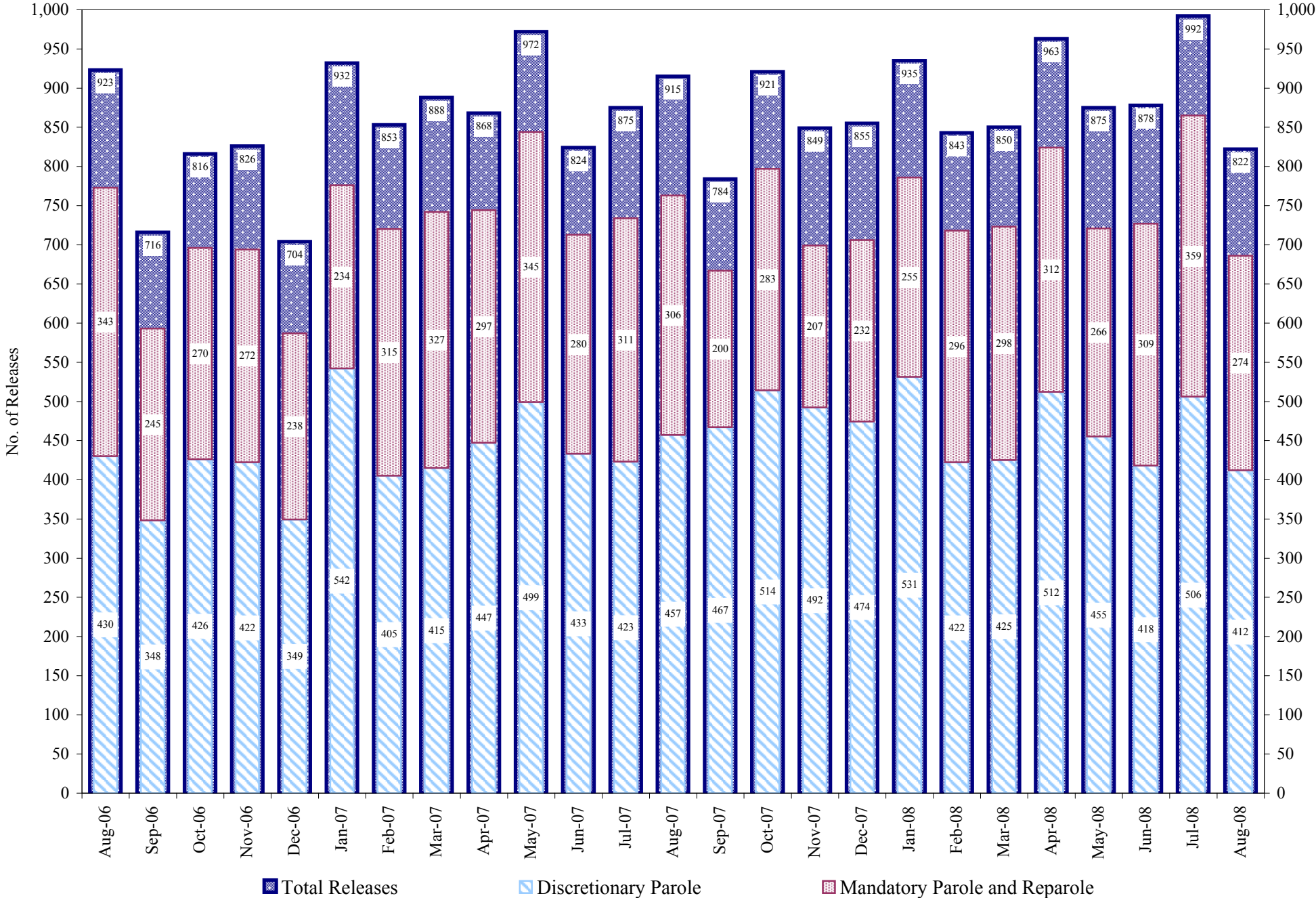
Appeal Bond-Released by court to appeal bond.

Deceased-Offender death in prison.

***Due to the decrease in community transportation services, the Department implemented a procedural change in December 2005 with regards to releasing inmates on weekends. As a result of this change, discretionary releases have increased and mandatory releases have decreased.**

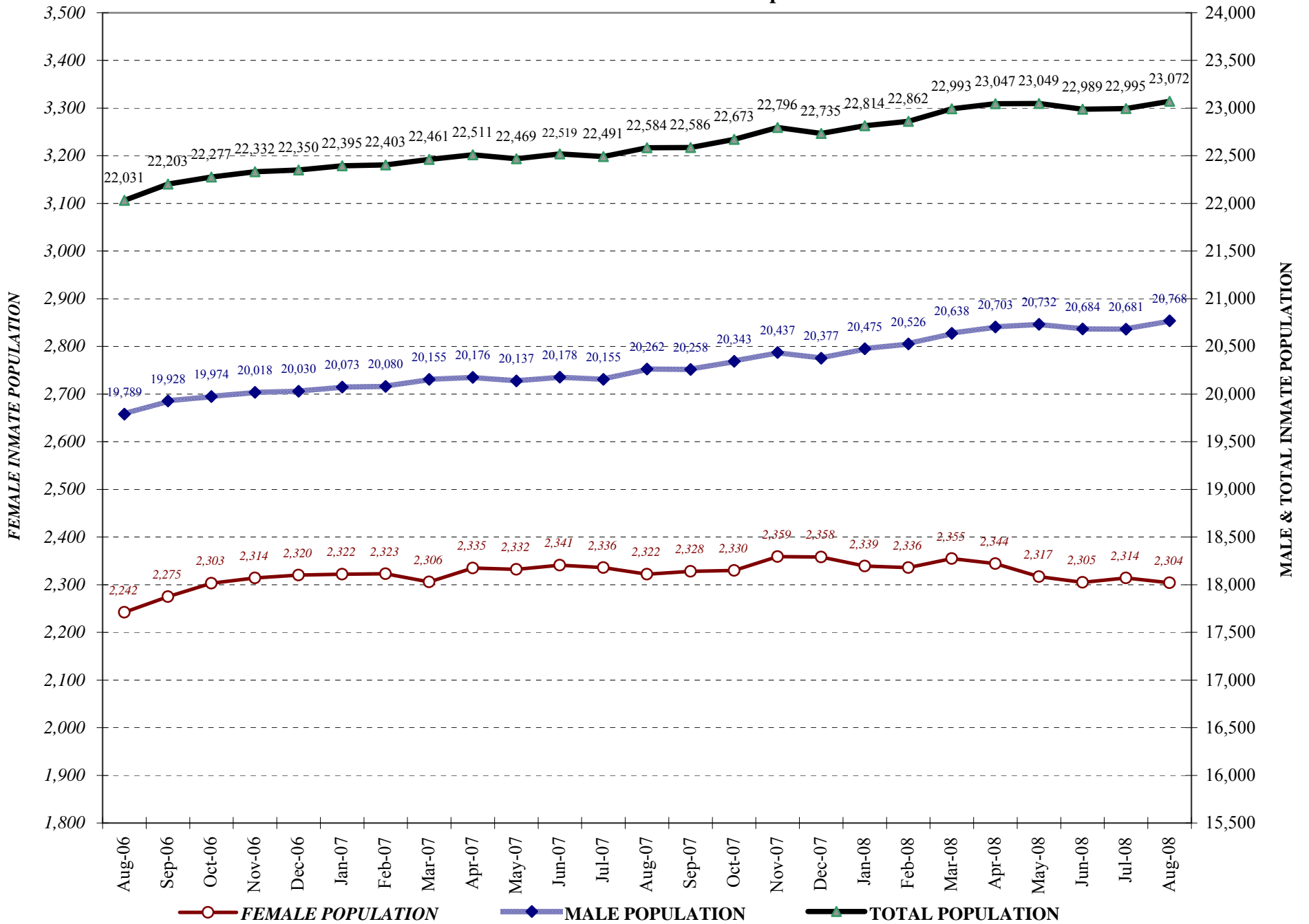
COLORADO DEPARTMENT OF CORRECTIONS

Adult Prison Releases

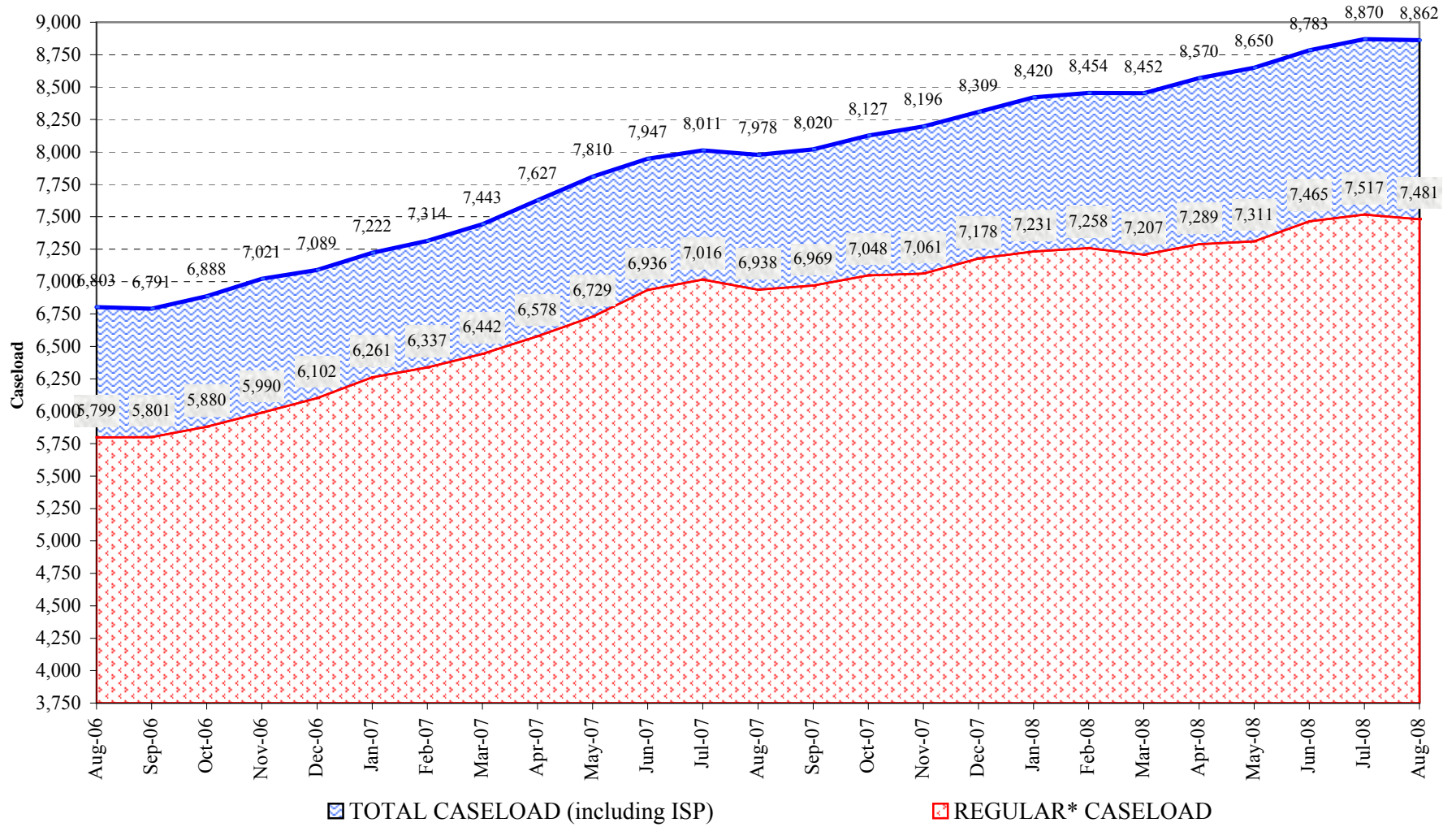


Total releases include releases to discretionary parole, mandatory parole and reparole, all types of discharges and other releases as detailed on the previous page.

COLORADO DEPARTMENT OF CORRECTIONS Adult Jurisdictional Inmate Population



COLORADO DEPARTMENT OF CORRECTIONS Parole Population



* Regular caseload includes interstate parole, but excludes out-of-state parolees and absconders.