

**COLORADO DEPARTMENT OF CORRECTIONS
MONTHLY POPULATION AND CAPACITY REPORT
AS OF JULY 31, 2008**

20-Aug-08

	06/30/08	CAPACITY CHANGES	------ 07/31/08 -----		------ 07/31/07 -----	
	OPERATIONAL CAPACITY*		OPERATIONAL CAPACITY*	ON-GRDS POPULATION	OPERATIONAL CAPACITY*	ON-GRDS POPULATION
COLO STATE PENITENTIARY	756		756	715	756	751
CENTENNIAL CORR FAC	336		336	310	336	318
STERLING CORR FAC	2,545		2,545	2,512	2,545	2,490
LIMON CORR FAC	953		953	943	953	935
ARK VALLEY CORR FAC	1,007		1,007	1,001	1,007	998
BUENA VISTA CORR FAC	926		926	890	926	899
BUENA VISTA MIN CTR	292		292	262	292	272
COLO TERR CORR FAC	936	8	944	934	786	805
FORT LYON CORR FAC	500		500	487	500	478
FREMONT CORR FAC	1,660	1	1,661	1,652	1,471	1,470
LA VISTA CORR FAC	519		519	465	519	496
ARROWHEAD CORR CTR	494		494	482	494	491
FOUR MILE CORR CTR	499		499	471	499	492
TRINIDAD CORR FAC	484		484	477	484	475
S.T.U. at Y.O.S.	30		30	12	30	27
SKYLINE CORR CTR	249		249	238	249	244
COLORADO CORR CTR	150		150	149	150	149
DELTA CORR CTR	484		484	468	484	457
RIFLE CORR CTR	192		192	192	192	182
COLO CORR ALT PROGRAM	100		100	79	100	100
COLO WOMEN'S CORR FAC	224		224	214	224	209
DENVER WOMEN'S CORR FAC	866		866	787	900	781
DENVER REC DIAG CTR	480		480	388	480	440
SAN CARLOS CORR FAC	255		255	247	255	248
SUBTOTAL	14,937	9	14,946	14,375	14,632	14,207
CONTRACTS:						
BENT COUNTY CORR CTR	1,466		1,466	945	724	691
HUERFANO COUNTY CORR CTR	774		774	755	774	740
CROWLEY COUNTY CORR FAC	1,720		1,720	1,622	1,720	1,561
KIT CARSON COUNTY CORR FAC	1,562		1,562	1,088	820	793
CHEYENNE MTN REENTRY CTR	672		672	582	500	492
HIGH PLAINS CORR FAC	280		280	238	270	236
NORTH FORK OK CORR FAC	0		0	0	480	479
OFF-GROUNDS POPULATION:						
ESCAPEES/WALKAWAYS				295		259
REVOCATIONS-JAIL				237		229
				0		1
JAIL BACKLOG:						
BACKLOG LESS THAN 72 HOURS			137		47	
BACKLOG GREATER THAN 72 HOURS (FISCAL YTD AVE = 130)			33		0	
BACKLOG-PAROLEES AWAITING TRANSFER			49		22	
TOTAL JAIL BACKLOG				219		69
COUNTY JAIL CONTRACTS				44		84
COMMUNITY CORRECTIONS						
COMMUNITY						
RESIDENTIAL	1,356	-2	1,354	1,354	1,431	1,431
PAROLE REVOCATIONS	1	1	2	2	1	1
REVOKED-RET TO CUST	245	-22	223	223	245	245
NON-RESIDENTIAL	63	-5	58	58	71	71
REGRESSIONS	48	4	52	52	26	26
TOTAL COMMUNITY	1,713	-24	1,689	1,689	1,774	1,774
ISP						
RESIDENTIAL	901	-58	843	843	837	837
NON-RESIDENTIAL	58	-7	51	51	35	35
REGRESSIONS	5	7	12	12	4	4
TOTAL ISP	964	-58	906	906	876	876
TOTAL COMM. CORRECTIONS	2,677	-82	2,595	2,595	2,650	2,650
MALE POPULATION			20,681		20,155	
FEMALE POPULATION			2,314		2,336	
TOTAL INMATE JURISDICTIONAL POPULATION				22,995		22,491

*OPERATIONAL CAPACITY INCLUDES ALL BEDS AVAILABLE FOR USE, INCLUDING MANAGEMENT CONTROL UNITS, BUT EXCLUDES EMERGENCY DOUBLE BUNKING

COLORADO DEPARTMENT OF CORRECTIONS
MONTHLY POPULATION AND CAPACITY REPORT
AS OF JULY 31, 2008

20-Aug-08

CURRENT MONTH CHANGES IN CAPACITY:

Jul-08	COLO TERR CORR FAC	RECONSTRUCTION COMPLETED	8
	FREMONT CORR FAC	CAPACITY CORRECTION	1

NET MONTHLY GROWTH RATE:

CURRENT MONTH	6
FISCAL YEAR-TO-DATE AVERAGE	6

YOUTHFUL OFFENDER SYSTEM

	----- 07/31/08 -----			07/31/07
	PUEBLO	CONTRACT FACILITIES	COMM. CORR.	TOTAL POPULATION
INTAKE/IDO	8			5
RFP/REMEDICATION	19			14
PHASE I	140			148
PHASE II	13			13
PHASE III			39	28
OFF GROUNDS/BACKLOG				2
TOTAL Y.O.S. POPULATION	180	0	39	210

	CURRENT MONTH	FISCAL YR. TO DATE
YOS ADMISSIONS	6	6
YOS RELEASES:		
COMPLETION OF SENTENCE	1	1
JUDICIAL RELEASE TO PROB/CT ORD DISCHG	0	0
JUDICIAL TRANSFER TO DOC	0	0
TERMINATION/FAILURE	0	0
DECEASED	0	0
TOTAL RELEASES	1	1

PAROLE CASELOAD

	----- 07/31/08 -----			----- 06/30/08 -----		----- 07/31/07 -----	
	DOMESTIC	INTERST PAR/PROB	TOTAL CASELOAD	DOMESTIC	TOTAL CASELOAD	DOMESTIC	TOTAL CASELOAD
DENVER REGION							
REGULAR	2,737	84	2,821	2,677	2,760	2,537	2,648
ISP	636		636	646	646	458	458
SUBTOTAL	3,373	84	3,457	3,323	3,406	2,995	3,106
NORTHEAST REGION							
REGULAR	1,958	98	2,056	2,000	2,099	1,381	1,878
ISP	295		295	274	274	219	219
SUBTOTAL	2,253	98	2,351	2,274	2,373	1,600	2,097
SOUTHEAST REGION							
REGULAR	1,789	85	1,874	1,786	1,870	1,655	1,747
ISP	309		309	273	273	236	236
SUBTOTAL	2,098	85	2,183	2,059	2,143	1,891	1,983
WESTERN REGION							
REGULAR	716	50	766	688	736	702	743
ISP	113		113	125	125	82	82
SUBTOTAL	829	50	879	813	861	784	825
TOTAL CASELOAD							
REGULAR	7,200	317	7,517	7,151	7,465	6,275	7,016
ISP	1,353		1,353	1,318	1,318	995	995
TOTAL	8,553	317	8,870	8,469	8,783	7,270	8,011
ADDITIONAL CASELOAD:							
OUT-OF-STATE PAROLEES			1,957		1,955		1,839
PAROLEE ABSCONDERS			775		773		800

**COLORADO DEPARTMENT OF CORRECTIONS
MONTHLY POPULATION AND CAPACITY REPORT
AS OF JULY 31, 2008**

		07/31/2008 Population			----- FINAL CUSTODY DESIGNATION* -----					
		On-Grds.	Off-Grds	Total	Uncls.	Ad.Seg	Close	Medium	Min.-Res.	Minimum
Male Population	COLO STATE PENITENTIARY	715	7	722		720	2			
	CENTENNIAL CORR FAC	310	0	310		19	289	2		
	STERLING CORR FAC	2,512	33	2,545		277	746	506	580	436
	LIMON CORR FAC	943	7	950		10	665	196	60	19
	ARK VALLEY CORR FAC	1,001	8	1,009		3	430	346	171	59
	BUENA VISTA CORR FAC	890	16	906		3	356	355	130	62
	BUENA VISTA MIN CTR	262	27	289					215	74
	COLO TERR CORR FAC	934	18	952		9	251	298	235	159
	FORT LYON CORR FAC	487	6	493		1	25	197	184	86
	FREMONT CORR FAC	1,652	19	1,671		16	193	463	563	436
	ARROWHEAD CORR CTR	482	2	484				2	295	187
	FOUR MILE CORR CTR	471	22	493				1	345	147
	TRINIDAD CORR FAC	477	6	483				1	428	54
	S.T.U. at Y.O.S.	12	0	12				8	4	0
	SKYLINE CORR CTR	238	1	239						239
	COLORADO CORR CTR	149	0	149						149
	DELTA CORR CTR	468	3	471				1		470
	RIFLE CORR CTR	192	1	193				1	2	190
	COLO CORR ALT PROGRAM	73	8	81					2	79
	DENVER REC DIAG CTR	388	17	405	87	8	34	85	138	53
	SAN CARLOS CORR FAC	247	4	251		24	109	56	32	30
	CONTRACTS:									
	BENT COUNTY CORR CTR	945	9	954			7	475	324	148
	HUERFANO COUNTY CORR CTR	755	16	771		3	5	396	242	125
	CROWLEY COUNTY CORR FAC	1,622	27	1,649		11	3	811	593	231
	KIT CARSON COUNTY CORR FAC	1,088	9	1,097			15	543	346	193
	CHEYENNE MTN REENTRY CTR	582	4	586			5	121	252	208
	NORTH FORK OK CORR FAC	0	0	0						
	COMMUNITY/ISP	1,747	87	1,834			7	32	41	1,754
	Total Classified Male Population	19,642	357	19,999	87	1,104	3,142	4,896	5,182	5,588
Percent of Total				0.4%	5.5%	15.7%	24.5%	25.9%	27.9%	
Unclassified Facilities:										
JAIL BACKLOG/REVOCATIONS	197	0	197							
COUNTY JAIL CONTRACTS	38	6	44							
REVOKED TO JAIL	0	0	0							
REVOKED TO COMM CTR	1	1	2							
REVOKED-RET TO CUST FAC	147	45	192							
COMM/ISP REGRESSIONS	0	57	57							
ESCAPEES/WALKAWAYS	42	148	190							
Total Unclassified Facilities	425	257	682							
Total Male Population	20,067	614	20,681							
Female Population	COLO WOMEN'S CORR FAC	214	1	215		1	56	21	64	73
	DENVER WOMEN'S CORR FAC	787	11	798	16	29	125	133	292	203
	LA VISTA CORR FAC	465	9	474			26	90	216	142
	COLO CORR ALT PROGRAM	6	1	7						7
	DENVER REC DIAG CTR INF	0	0	0						
	COLO TERR CORR FAC INF.	0	0	0						
	CONTRACTS:									
	HIGH PLAINS CORR FAC	238	3	241				13	162	66
	COMMUNITY/ISP	450	22	472			1	6	23	442
	Total Classified Female Population	2,160	47	2,207	16	30	208	263	757	933
	Percent of Total				0.7%	1.4%	9.4%	11.9%	34.3%	42.3%
	Unclassified Facilities:									
	JAIL BACKLOG	22	0	22						
COUNTY JAIL CONTRACTS	0	0	0							
REVOKED TO JAIL	0	0	0							
REVOKED TO COMM CTR	0	0	0							
REVOKED-RET TO CUST FAC	23	8	31							
COMM/ISP REGRESSIONS	0	7	7							
ESCAPEES/WALKAWAYS	6	41	47							
Total Unclassified Facilities	51	56	107							
Total Female Population	2,211	103	2,314							

COLORADO DEPARTMENT OF CORRECTIONS
ADULT INMATE JURISDICTIONAL POPULATION (1)

DATE: 8/20/2008

DATE	MALE POPULATION			FEMALE POPULATION			TOTAL POPULATION		
	Male Population	Net Change	Fiscal Y-T-D Average	Female Population	Net Change	Fiscal Y-T-D Average	Total Population	Net Change	Fiscal Y-T-D Average
07-31-08	20,681	-3	-3	2,314	9	9	22,995	6	6
06-30-08	20,684	-48		2,305	-12		22,989	-60	
05-31-08	20,732	29		2,317	-27		23,049	2	
04-30-08	20,703	65		2,344	-11		23,047	54	
03-31-08	20,638	112		2,355	19		22,993	131	
02-29-08	20,526	51		2,336	-3		22,862	48	
01-31-08	20,475	98		2,339	-19		22,814	79	
12-31-07	20,377	-60	42	2,358	-1	-3	22,735	-61	39
11-30-07	20,437	94		2,359	29		22,796	123	
10-31-07	20,343	85		2,330	2		22,673	87	
09-30-07	20,258	-4		2,328	6		22,586	2	
08-31-07	20,262	107		2,322	-14		22,584	93	
07-31-07	20,155	-23		2,336	-5		22,491	-28	
06-30-07	20,178	41		2,341	9		22,519	50	
05-31-07	20,137	-39		2,332	-3		22,469	-42	
04-30-07	20,176	21		2,335	29		22,511	50	
03-31-07	20,155	75		2,306	-17		22,461	58	
02-28-07	20,080	7		2,323	1		22,403	8	
01-31-07	20,073	43		2,322	2		22,395	45	
12-31-06	20,030	12	32	2,320	6	10	22,350	18	42
11-30-06	20,018	44		2,314	11		22,332	55	
10-31-06	19,974	46		2,303	28		22,277	74	
09-30-06	19,928	139		2,275	33		22,203	172	
08-31-06	19,789	-34		2,242	-7		22,031	-41	
07-31-06	19,823	31		2,249	29		22,072	60	
06-30-06	19,792		97	2,220		12	22,012		109
06-30-05	18,631		68	2,073		27	20,704		95
06-30-04	17,814		49	1,755		11	19,569		60
06-30-03	17,226		57	1,620		10	18,846		67
06-30-02	16,539		87	1,506		14	18,045		101
06-30-01	15,493		63	1,340		6	16,833		70
06-30-00	14,733		99	1,266		7	15,999		106
06-30-99	13,547		75	1,179		14	14,726		89
06-30-98	12,647			1,016			13,663		

(1) Adult inmate jurisdictional population includes on-grounds, off-grounds, out-of-state, escapees, and jail backlog and excludes offenders sentenced to the Youthful Offender System (Y.O.S.).

COLORADO DEPARTMENT OF CORRECTIONS
ADULT INMATE RELEASES FROM PRISON
TOTAL Population (Male and Female)

Date: 8/20/2008

	Parole				Discharge					Other				Total
	Discretionary*	Mandatory*	Mand. Repar.*	Com. Supv.	Sentence	H.B. 1087	Martin/Cooper	Chgs/Det.	Com Spv. Elim	Probation	Ct. Ord. Dsch.	Appeal Bond	Deceased	
Jul-08	506	233	126	0	30	49	6	17	0	15	6	0	4	992
Jun-08	418	209	100	0	37	62	9	16	0	15	9	0	3	878
May-08	455	188	78	0	38	63	6	14	0	14	14	0	5	875
Apr-08	512	219	93	0	36	51	5	19	0	15	9	0	4	963
Mar-08	425	182	116	0	27	52	8	22	0	5	10	0	3	850
Feb-08	422	214	82	0	35	49	3	17	0	9	6	1	5	843
Jan-08	531	179	76	0	33	66	10	21	0	6	9	0	4	935
Dec-07	474	157	75	0	35	55	10	17	0	17	7	0	8	855
Nov-07	492	154	53	0	29	56	11	16	0	21	14	0	3	849
Oct-07	514	185	98	0	24	55	11	12	0	12	8	0	2	921
Sep-07	467	153	47	0	39	41	6	9	0	5	13	1	3	784
Aug-07	457	192	114	0	34	54	8	21	0	16	14	0	5	915
Jul-07	423	196	115	0	34	58	6	22	0	7	10	0	4	875
Jun-07	433	188	92	0	19	49	13	11	0	9	8	0	2	824
May-07	499	216	129	0	31	43	7	20	0	14	9	0	4	972
Apr-07	447	197	100	0	26	51	9	16	0	6	10	0	6	868
Mar-07	415	187	140	0	33	64	4	14	0	14	13	1	3	888
Feb-07	405	235	80	0	24	58	12	19	0	15	5	0	0	853
Jan-07	542	192	42	0	37	59	5	15	0	15	16	0	9	932
Dec-06	349	179	59	0	27	44	10	14	0	13	6	1	2	704
Nov-06	422	202	70	0	30	45	12	12	0	16	11	0	6	826
Oct-06	426	186	84	0	36	44	11	10	0	6	7	1	5	816
Sep-06	348	180	65	0	29	44	13	15	0	13	7	0	2	716
Aug-06	430	239	104	0	37	52	10	21	0	17	11	0	2	923

Definitions of Release Types

Discretionary parole-Released to parole through Parole Board discretion prior to mandatory release or sentence discharge date.

Mandatory parole-Released to parole on mandatory release date.

Mand. Repar-Reparoled on specific date set by Parole Board (includes S.B. 252 reparoles). n/a - breakout not available prior to June 2004.

Com. Supv.-Released to serve 12 months of community supervision.

Sentence discharge-Completion of sentence with no further supervision.

H.B. 1087 discharge-Completion of sentence with no further supervision, subject to earn time provisions of H.B. 95-1087.

Martin/ Cooper discharge-Completion of sentence with no further supervision, sex offender subject to Martin/Cooper Supreme Court decision.

Chgs/ Det. discharge-Completion of sentence, released to other law enforcement for pending charges or detainees.

Com. Spv. Elim discharge-Completion of sentence following reincarceration on community supervision sentence.

Probation-Released by court to probation.

Ct. Ord. Dsch.-Released by court order.

Appeal Bond-Released by court to appeal bond.

Deceased-Offender death in prison.

***Due to the decrease in community transportation services, the Department implemented a procedural change in December 2005 with regards to releasing inmates on weekends. As a result of this change, discretionary releases have increased and mandatory releases have decreased.**

COLORADO DEPARTMENT OF CORRECTIONS

ADULT INMATE RELEASES FROM PRISON

Male Population Only

Date: 8/20/2008

	Parole				Discharge					Other				Total
	Discretionary*	Mandatory*	Mand. Repar.*	Com. Supv.	Sentence	H.B. 1087	Martin/Cooper	Chgs/Det.	Com Spv. Elim	Probation	Ct. Ord. Dsch.	Appeal Bond	Deceased	
Jul-08	444	207	102	0	30	46	6	15	0	13	6	0	4	873
Jun-08	370	187	89	0	36	57	9	14	0	13	7	0	2	784
May-08	372	166	63	0	37	54	6	12	0	12	14	0	5	741
Apr-08	440	181	82	0	35	45	5	17	0	15	7	0	3	830
Mar-08	367	167	98	0	25	46	8	19	0	5	9	0	2	746
Feb-08	362	189	72	0	34	43	3	16	0	7	4	1	5	736
Jan-08	445	156	64	0	31	59	10	16	0	5	6	0	4	796
Dec-07	401	141	66	0	31	45	10	16	0	16	7	0	8	741
Nov-07	425	133	49	0	25	50	11	14	0	14	13	0	3	737
Oct-07	432	154	84	0	23	48	11	12	0	11	7	0	2	784
Sep-07	413	131	41	0	36	35	6	8	0	4	13	1	3	691
Aug-07	377	170	104	0	29	46	8	20	0	14	10	0	5	783
Jul-07	360	171	94	0	34	52	6	20	0	7	6	0	4	754
Jun-07	366	172	79	0	18	45	12	11	0	8	8	0	2	721
May-07	432	194	110	0	30	37	7	18	0	11	9	0	3	851
Apr-07	382	179	90	0	24	47	8	15	0	4	8	0	6	763
Mar-07	344	166	118	0	28	56	4	14	0	10	13	0	3	756
Feb-07	330	209	71	0	23	51	11	16	0	14	5	0	0	730
Jan-07	453	169	37	0	34	53	5	15	0	14	13	0	7	800
Dec-06	298	160	56	0	24	38	10	14	0	13	6	1	2	622
Nov-06	358	178	62	0	28	42	12	12	0	13	10	0	6	721
Oct-06	373	163	73	0	34	36	11	9	0	6	6	1	5	717
Sep-06	300	148	59	0	29	40	13	12	0	12	7	0	2	622
Aug-06	364	209	89	0	34	44	10	21	0	14	10	0	2	797

Definitions of Release Types

Discretionary parole-Released to parole through Parole Board discretion prior to mandatory release or sentence discharge date.

Mandatory parole-Released to parole on mandatory release date.

Mand. Repar-Reparoled on specific date set by Parole Board (includes S.B. 252 reparoles). n/a - breakout not available prior to June 2004.

Com. Supv.-Released to serve 12 months of community supervision.

Sentence discharge-Completion of sentence with no further supervision.

H.B. 1087 discharge-Completion of sentence with no further supervision, subject to earn time provisions of H.B. 95-1087.

Martin/ Cooper discharge-Completion of sentence with no further supervision, sex offender subject to Martin/Cooper Supreme Court decision.

Chgs/ Det. discharge-Completion of sentence, released to other law enforcement for pending charges or detainees.

Com. Spv. Elim discharge-Completion of sentence following reincarceration on community supervision sentence.

Probation-Released by court to probation.

Ct. Ord. Dsch.-Released by court order.

Appeal Bond-Released by court to appeal bond.

Deceased-Offender death in prison.

***Due to the decrease in community transportation services, the Department implemented a procedural change in December 2005 with regards to releasing inmates on weekends. As a result of this change, discretionary releases have increased and mandatory releases have decreased.**

COLORADO DEPARTMENT OF CORRECTIONS
ADULT INMATE RELEASES FROM PRISON
Female Population Only

Date: 8/20/2008

	Parole				Discharge					Other				Total
	Discretionary*	Mandatory*	Mand. Repar.*	Com. Supv.	Sentence	H.B. 1087	Martin/Cooper	Chgs/Det.	Com Spv. Elim	Probation	Ct. Ord. Dsch.	Appeal Bond	Deceased	
Jul-08	62	26	24	0	0	3	0	2	0	2	0	0	0	119
Jun-08	48	22	11	0	1	5	0	2	0	2	2	0	1	94
May-08	83	22	15	0	1	9	0	2	0	2	0	0	0	134
Apr-08	72	38	11	0	1	6	0	2	0	0	2	0	1	133
Mar-08	58	15	18	0	2	6	0	3	0	0	1	0	1	104
Feb-08	60	25	10	0	1	6	0	1	0	2	2	0	0	107
Jan-08	86	23	12	0	2	7	0	5	0	1	3	0	0	139
Dec-07	73	16	9	0	4	10	0	1	0	1	0	0	0	114
Nov-07	67	21	4	0	4	6	0	2	0	7	1	0	0	112
Oct-07	82	31	14	0	1	7	0	0	0	1	1	0	0	137
Sep-07	54	22	6	0	3	6	0	1	0	1	0	0	0	93
Aug-07	80	22	10	0	5	8	0	1	0	2	4	0	0	132
Jul-07	63	25	21	0	0	6	0	2	0	0	4	0	0	121
Jun-07	67	16	13	0	1	4	1	0	0	1	0	0	0	103
May-07	67	22	19	0	1	6	0	2	0	3	0	0	1	121
Apr-07	65	18	10	0	2	4	1	1	0	2	2	0	0	105
Mar-07	71	21	22	0	5	8	0	0	0	4	0	1	0	132
Feb-07	75	26	9	0	1	7	1	3	0	1	0	0	0	123
Jan-07	89	23	5	0	3	6	0	0	0	1	3	0	2	132
Dec-06	51	19	3	0	3	6	0	0	0	0	0	0	0	82
Nov-06	64	24	8	0	2	3	0	0	0	3	1	0	0	105
Oct-06	53	23	11	0	2	8	0	1	0	0	1	0	0	99
Sep-06	48	32	6	0	0	4	0	3	0	1	0	0	0	94
Aug-06	66	30	15	0	3	8	0	0	0	3	1	0	0	126

Definitions of Release Types

Discretionary parole-Released to parole through Parole Board discretion prior to mandatory release or sentence discharge date.

Mandatory parole-Released to parole on mandatory release date.

Mand. Repar-Reparoled on specific date set by Parole Board (includes S.B. 252 reparoles). n/a - breakout not available prior to June 2004.

Com. Supv.-Released to serve 12 months of community supervision.

Sentence discharge-Completion of sentence with no further supervision.

H.B. 1087 discharge-Completion of sentence with no further supervision, subject to earn time provisions of H.B. 95-1087.

Martin/ Cooper discharge-Completion of sentence with no further supervision, sex offender subject to Martin/Cooper Supreme Court decision.

Chgs/ Det. discharge-Completion of sentence, released to other law enforcement for pending charges or detainees.

Com. Spv. Elim discharge-Completion of sentence following reincarceration on community supervision sentence.

Probation-Released by court to probation.

Ct. Ord. Dsch.-Released by court order.

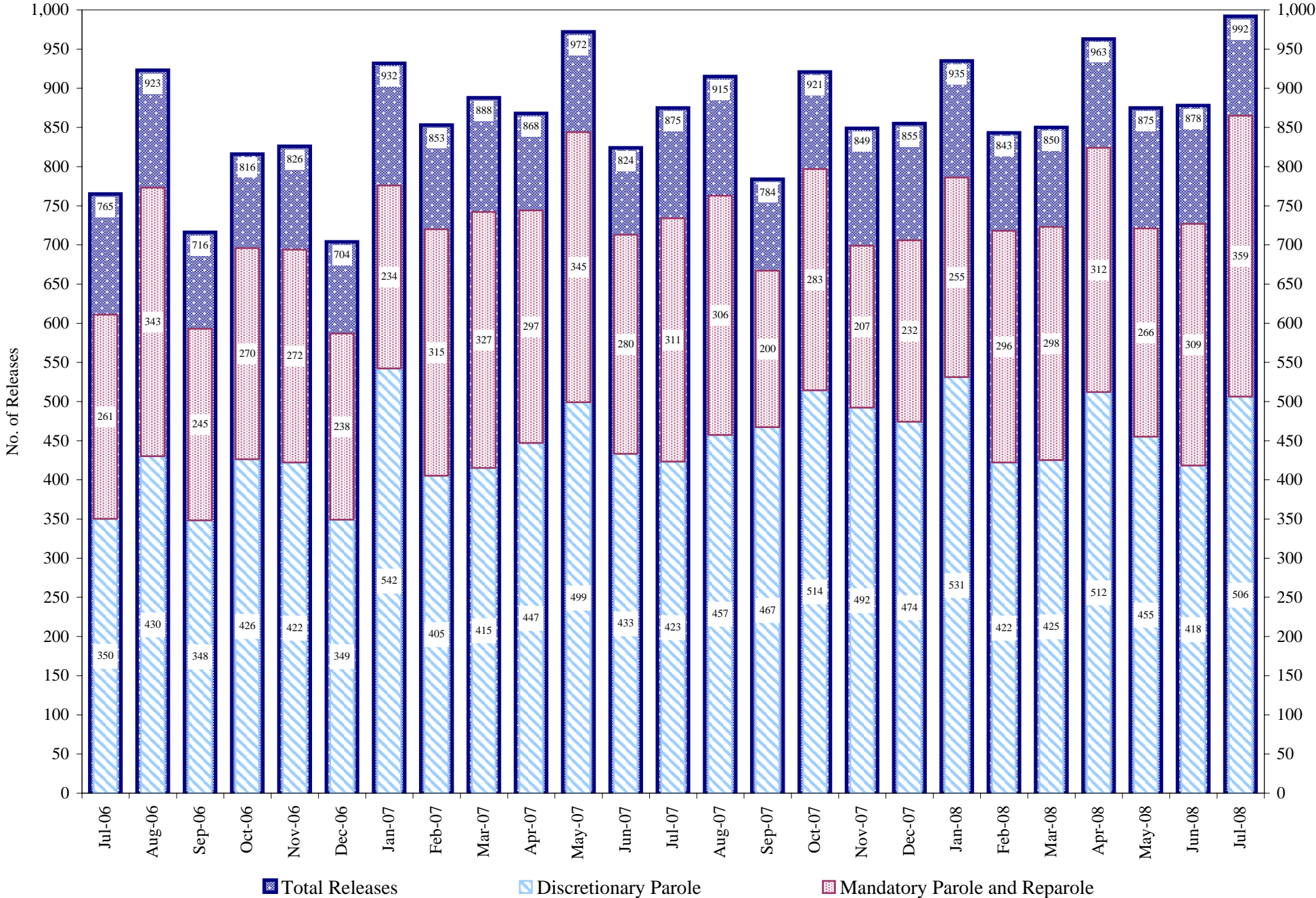
Appeal Bond-Released by court to appeal bond.

Deceased-Offender death in prison.

*Due to the decrease in community transportation services, the Department implemented a procedural change in December 2005 with regards to releasing inmates on weekends. As a result of this change, discretionary releases have increased and mandatory releases have decreased.

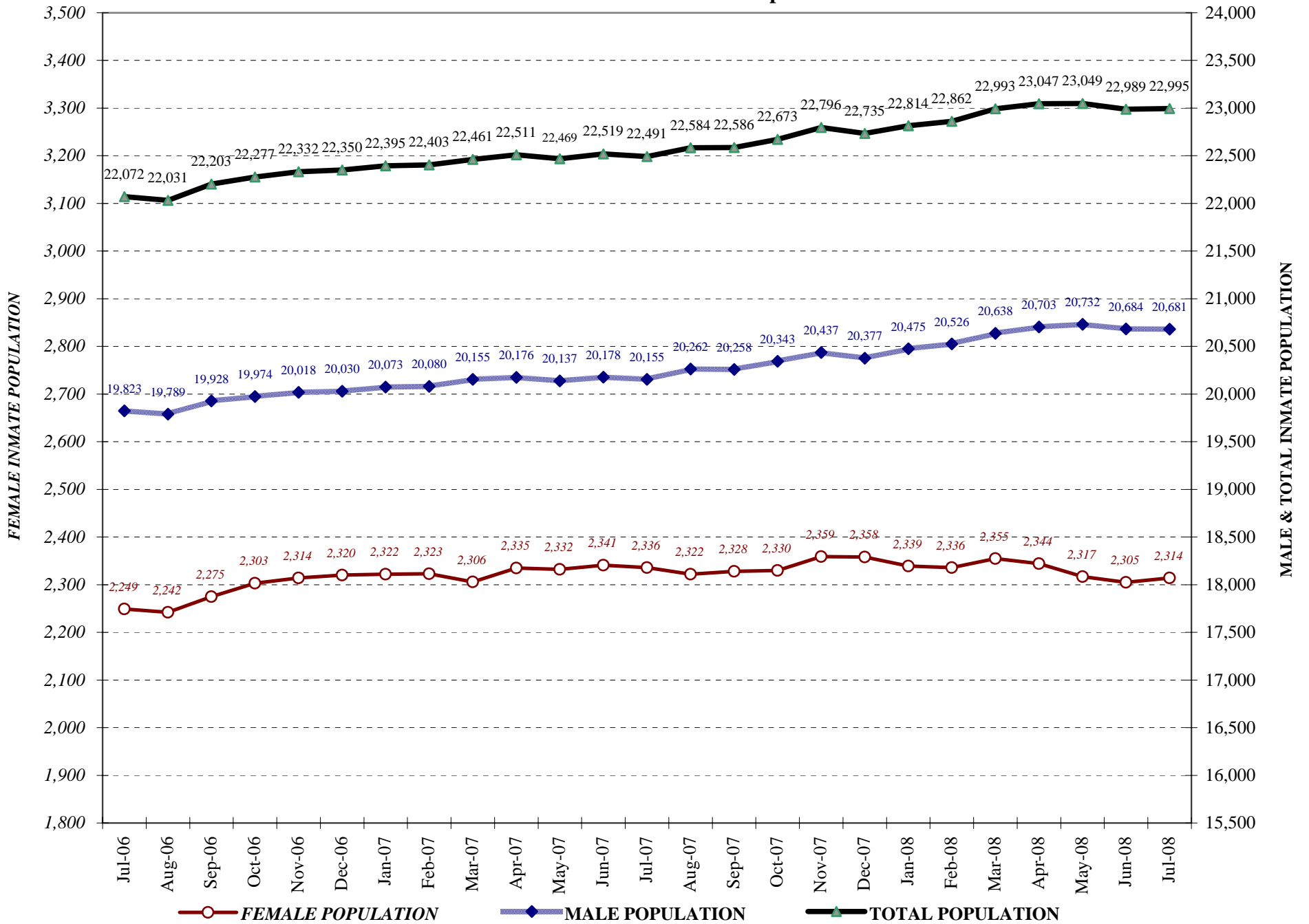
COLORADO DEPARTMENT OF CORRECTIONS

Adult Prison Releases

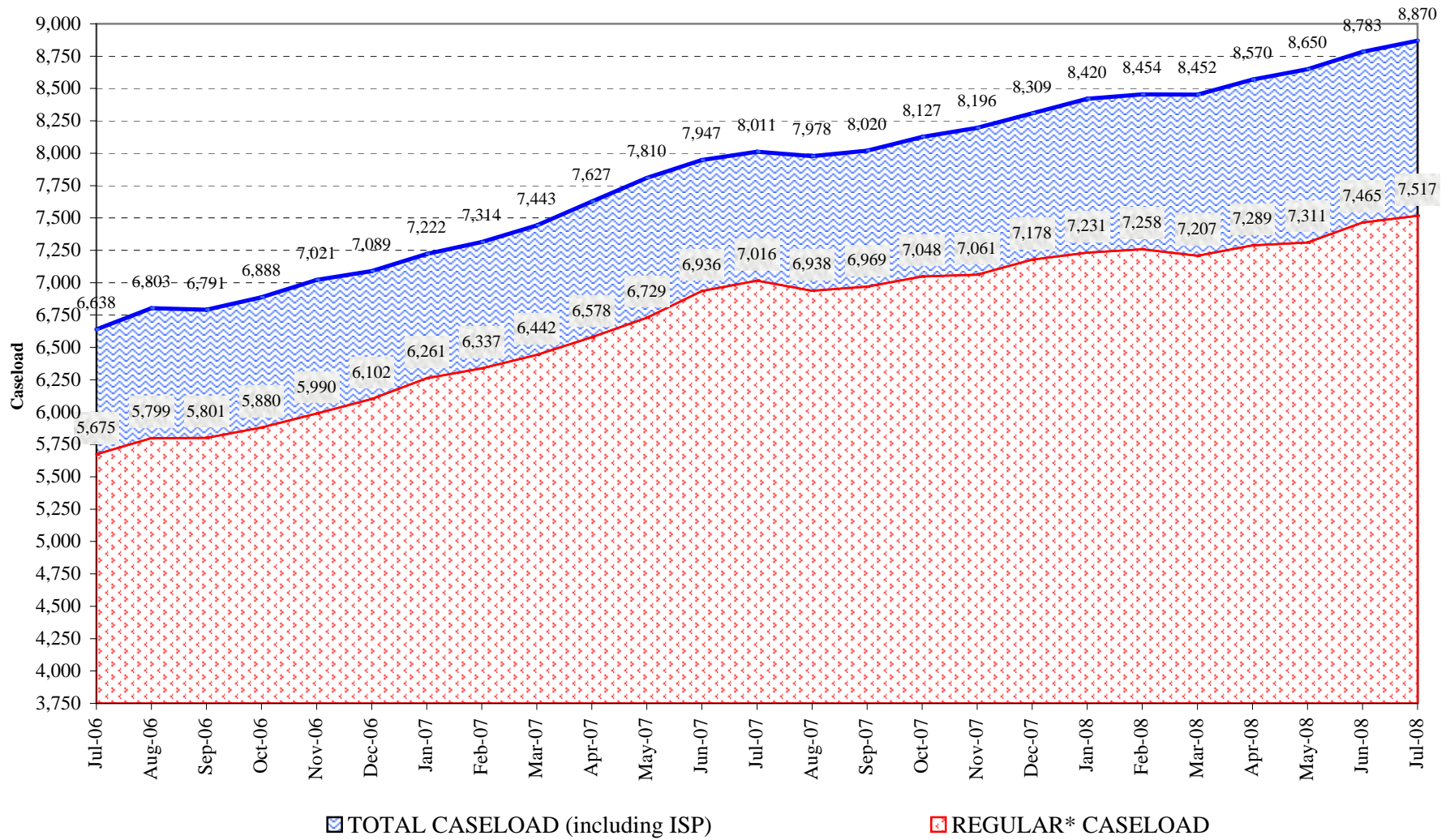


Total releases include releases to discretionary parole, mandatory parole and reparole, all types of discharges and other releases as detailed on the previous page.

COLORADO DEPARTMENT OF CORRECTIONS Adult Jurisdiction Inmate Population



COLORADO DEPARTMENT OF CORRECTIONS Parole Population



* Regular caseload includes interstate parole, but excludes out-of-state parolees and absconders.