

**COLORADO DEPARTMENT OF CORRECTIONS
MONTHLY POPULATION AND CAPACITY REPORT
AS OF JUNE 30, 2008**

2-Jul-08

	05/31/08	CAPACITY CHANGES	----- 06/30/08 -----		----- 06/30/07 -----	
	OPERATIONAL CAPACITY*		OPERATIONAL CAPACITY*	ON-GRDS POPULATION	OPERATIONAL CAPACITY*	ON-GRDS POPULATION
COLO STATE PENITENTIARY	756		756	733	756	753
CENTENNIAL CORR FAC	336		336	299	336	315
STERLING CORR FAC	2,545		2,545	2,495	2,545	2,530
LIMON CORR FAC	953		953	931	953	941
ARK VALLEY CORR FAC	1,007		1,007	995	1,007	1,008
BUENA VISTA CORR FAC	926		926	886	926	912
BUENA VISTA MIN CTR	292		292	254	292	284
COLO TERR CORR FAC	936		936	911	786	786
FORT LYON CORR FAC	500		500	476	500	497
FREMONT CORR FAC	1,660		1,660	1,652	1,471	1,465
LA VISTA CORR FAC	519		519	464	519	498
ARROWHEAD CORR CTR	494		494	490	494	489
FOUR MILE CORR CTR	499		499	475	499	494
TRINIDAD CORR FAC	484		484	475	484	471
S.T.U. at Y.O.S.	30		30	27	30	30
SKYLINE CORR CTR	249		249	243	249	248
COLORADO CORR CTR	150		150	149	150	145
DELTA CORR CTR	484		484	459	484	454
RIFLE CORR CTR	192		192	170	192	187
COLO CORR ALT PROGRAM	100		100	89	100	104
COLO WOMEN'S CORR FAC	224		224	211	224	208
DENVER WOMEN'S CORR FAC	866		866	783	900	810
DENVER REC DIAG CTR	480		480	462	480	457
SAN CARLOS CORR FAC	255		255	244	255	244
SUBTOTAL	14,937	0	14,937	14,373	14,632	14,330
CONTRACTS:						
BENT COUNTY CORR CTR	1,466		1,466	924	724	668
HUERFANO COUNTY CORR CTR	774		774	765	774	749
CROWLEY COUNTY CORR FAC	1,720		1,720	1,629	1,720	1,556
KIT CARSON COUNTY CORR FAC	1,562		1,562	1,100	820	790
CHEYENNE MTN REENTRY CTR	672		672	568	500	500
HIGH PLAINS CORR FAC	270	10	280	238	270	207
NORTH FORK OK CORR FAC	113	-113	0	0	480	479
OFF-GROUNDS POPULATION:				345		233
ESCAPEES/WALKAWAYS				228		227
REVOCATIONS-JAIL				0		0
JAIL BACKLOG:						
BACKLOG LESS THAN 72 HOURS			49		82	
BACKLOG GREATER THAN 72 HOURS (FISCAL YTD AVE = 117)			0		0	
BACKLOG-PAROLEES AWAITING TRANSFER			18		36	
TOTAL JAIL BACKLOG				67		118
COUNTY JAIL CONTRACTS				52		82
COMMUNITY CORRECTIONS						
COMMUNITY						
RESIDENTIAL	1,356	5	1,361	1,361	1,393	1,393
PAROLE REVOCATIONS	1	1	2	2	0	0
REVOKED-RET TO CUST	245	-2	243	243	235	235
NON-RESIDENTIAL	63	18	81	81	38	38
REGRESSIONS	48	-1	47	47	45	45
TOTAL COMMUNITY	1,713	21	1,734	1,734	1,711	1,711
ISP						
RESIDENTIAL	901	3	904	904	842	842
NON-RESIDENTIAL	58	-5	53	53	22	22
REGRESSIONS	5	4	9	9	5	5
TOTAL ISP	964	2	966	966	869	869
TOTAL COMM. CORRECTIONS	2,677	23	2,700	2,700	2,580	2,580
MALE POPULATION			20,684		20,178	
FEMALE POPULATION			2,305		2,341	
TOTAL INMATE JURISDICTIONAL POPULATION				22,989		22,519

*OPERATIONAL CAPACITY INCLUDES ALL BEDS AVAILABLE FOR USE, INCLUDING MANAGEMENT CONTROL UNITS, BUT EXCLUDES EMERGENCY DOUBLE BUNKING

**COLORADO DEPARTMENT OF CORRECTIONS
MONTHLY POPULATION AND CAPACITY REPORT
AS OF JUNE 30, 2008**

2-Jul-08

CURRENT MONTH CHANGES IN CAPACITY:

June-08	HIGH PLAINS CORR FAC	INCREASED CONTRACT CAPACITY	10
	NORTH FORK OK CORR FAC	RETURNED OUT-OF-STATE PLACEMENTS	-113

NET MONTHLY GROWTH RATE:

CURRENT MONTH	-60
FISCAL YEAR-TO-DATE AVERAGE	39

YOUTHFUL OFFENDER SYSTEM

	----- 06/30/08 -----			06/30/07
	PUEBLO	CONTRACT FACILITIES	COMM. CORR.	TOTAL POPULATION
INTAKE/IDO	5			9
RFP/REMEDICATION	15			7
PHASE I	140			154
PHASE II	11			12
PHASE III	0		39	25
OFF GROUNDS/BACKLOG				2
TOTAL Y.O.S. POPULATION	171	0	39	209

	CURRENT MONTH	FISCAL YR. TO DATE
YOS ADMISSIONS	5	59
YOS RELEASES:		
COMPLETION OF SENTENCE	1	31
JUDICIAL RELEASE TO PROB/CT ORD DISCHG	1	4
JUDICIAL TRANSFER TO DOC	0	0
TERMINATION/FAILURE	4	14
DECEASED	0	0
TOTAL RELEASES	6	49

PAROLE CASELOAD

	----- 06/30/08 -----			----- 05/31/08 -----		----- 06/30/07 -----	
	DOMESTIC	INTERST PAR/PROB	TOTAL CASELOAD	DOMESTIC	TOTAL CASELOAD	DOMESTIC	TOTAL CASELOAD
DENVER REGION							
REGULAR	2,677	83	2,760	2,608	2,687	2,510	2,617
ISP	646		646	658	658	473	473
SUBTOTAL	3,323	83	3,406	3,266	3,345	2,983	3,090
NORTHEAST REGION							
REGULAR	2,000	99	2,099	1,946	2,044	1,800	1,846
ISP	274		274	285	285	206	206
SUBTOTAL	2,274	99	2,373	2,231	2,329	2,006	2,052
SOUTHEAST REGION							
REGULAR	1,786	84	1,870	1,774	1,857	1,639	1,731
ISP	273		273	277	277	242	242
SUBTOTAL	2,059	84	2,143	2,051	2,134	1,881	1,973
WESTERN REGION							
REGULAR	688	48	736	680	723	701	742
ISP	125		125	119	119	90	90
SUBTOTAL	813	48	861	799	842	791	832
TOTAL CASELOAD							
REGULAR	7,151	314	7,465	7,008	7,311	6,650	6,936
ISP	1,318		1,318	1,339	1,339	1,011	1,011
TOTAL	8,469	314	8,783	8,347	8,650	7,661	7,947
ADDITIONAL CASELOAD:							
OUT-OF-STATE PAROLEES			1,955		1,941		1,815
PAROLEE ABSCONDERS			773		799		781

COLORADO DEPARTMENT OF CORRECTIONS
MONTHLY POPULATION AND CAPACITY REPORT
AS OF JUNE 30, 2008

	06/30/2008 Population			----- FINAL CUSTODY DESIGNATION* -----					
	On-Grds.	Off-Grds	Total	Uncls.	Ad.Seg	Close	Medium	Min.-Res.	Minimum
COLO STATE PENITENTIARY	733	6	739		732	5	1		1
CENTENNIAL CORR FAC	299	0	299		10	285	2	2	0
STERLING CORR FAC	2,495	42	2,537		279	756	511	552	439
LIMON CORR FAC	931	7	938		2	657	196	68	15
ARK VALLEY CORR FAC	995	9	1,004		2	415	352	182	53
BUENA VISTA CORR FAC	886	19	905		8	359	327	149	62
BUENA VISTA MIN CTR	254	30	284		0	0	2	212	70
COLO TERR CORR FAC	911	16	927		14	225	283	248	157
FORT LYON CORR FAC	476	4	480		0	25	178	193	84
FREMONT CORR FAC	1,652	13	1,665		19	202	461	554	429
ARROWHEAD CORR CTR	490	3	493				1	302	190
FOUR MILE CORR CTR	475	22	497				0	345	152
TRINIDAD CORR FAC	475	13	488				2	430	56
S.T.U. at Y.O.S.	27	0	27				4	23	0
SKYLINE CORR CTR	243	3	246					2	244
COLORADO CORR CTR	149	0	149						149
DELTA CORR CTR	459	6	465						465
RIFLE CORR CTR	170	23	193						193
COLO CORR ALT PROGRAM	84	2	86			1	2	6	77
DENVER REC DIAG CTR	460	14	474	95	9	35	119	137	79
SAN CARLOS CORR FAC	244	6	250		24	112	52	35	27
CONTRACTS:									
BENT COUNTY CORR CTR	924	14	938			13	488	289	148
HUERFANO COUNTY CORR CTR	765	15	780		3	6	411	228	132
CROWLEY COUNTY CORR FAC	1,629	31	1,660		10	3	825	594	228
KIT CARSON COUNTY CORR FAC	1,100	8	1,108			8	546	346	208
CHEYENNE MTN REENTRY CTR	568	4	572			3	133	261	175
NORTH FORK OK CORR FAC	0	0	0						
COMMUNITY/ISP	1,798	115	1,913			7	44	80	1,782
Total Classified Male Population	19,692	425	20,117	95	1,112	3,117	4,940	5,238	5,615
Percent of Total				0.5%	5.5%	15.5%	24.6%	26.0%	27.9%
Unclassified Facilities:									
JAIL BACKLOG/REVOCATIONS	62	0	62						
COUNTY JAIL CONTRACTS	52	0	52						
REVOKED TO JAIL	0	0	0						
REVOKED TO COMM CTR	2	0	2						
REVOKED-RET TO CUST FAC	147	61	208						
COMM/ISP REGRESSIONS	0	54	54						
ESCAPEES/WALKAWAYS	43	146	189						
Total Unclassified Facilities	306	261	567						
Total Male Population	19,998	686	20,684						
COLO WOMEN'S CORR FAC	211	1	212			51	24	60	77
DENVER WOMEN'S CORR FAC	783	13	796	10	26	132	124	298	206
LA VISTA CORR FAC	464	12	476		2	27	90	222	135
COLO CORR ALT PROGRAM	5	1	6						6
DENVER REC DIAG CTR INF	2	0	2			1		1	
COLO TERR CORR FAC INF.	0	0	0						
CONTRACTS:									
HIGH PLAINS CORR FAC	238	8	246			1	16	164	65
COMMUNITY/ISP	467	19	486			3	10	43	430
Total Classified Female Population	2,170	54	2,224	10	28	215	264	788	919
Percent of Total				0.4%	1.3%	9.7%	11.9%	35.4%	41.3%
Unclassified Facilities:									
JAIL BACKLOG	5	0	5						
COUNTY JAIL CONTRACTS	0	0	0						
REVOKED TO JAIL	0	0	0						
REVOKED TO COMM CTR	0	0	0						
REVOKED-RET TO CUST FAC	26	9	35						
COMM/ISP REGRESSIONS	0	2	2						
ESCAPEES/WALKAWAYS	7	32	39						
Total Unclassified Facilities	38	43	81						
Total Female Population	2,208	97	2,305						

COLORADO DEPARTMENT OF CORRECTIONS
ADULT INMATE JURISDICTIONAL POPULATION (1)

DATE: 7/2/2008

DATE	MALE POPULATION			FEMALE POPULATION			TOTAL POPULATION		
	Male Population	Net Change	Fiscal Y-T-D Average	Female Population	Net Change	Fiscal Y-T-D Average	Total Population	Net Change	Fiscal Y-T-D Average
06-30-08	20,684	-48	42	2,305	-12	-3	22,989	-60	39
05-31-08	20,732	29		2,317	-27		23,049	2	
04-30-08	20,703	65		2,344	-11		23,047	54	
03-31-08	20,638	112		2,355	19		22,993	131	
02-29-08	20,526	51		2,336	-3		22,862	48	
01-31-08	20,475	98		2,339	-19		22,814	79	
12-31-07	20,377	-60		2,358	-1		22,735	-61	
11-30-07	20,437	94		2,359	29		22,796	123	
10-31-07	20,343	85		2,330	2		22,673	87	
09-30-07	20,258	-4		2,328	6		22,586	2	
08-31-07	20,262	107		2,322	-14		22,584	93	
07-31-07	20,155	-23		2,336	-5		22,491	-28	
06-30-07	20,178	41		2,341	9		22,519	50	
05-31-07	20,137	-39		2,332	-3		22,469	-42	
04-30-07	20,176	21		2,335	29		22,511	50	
03-31-07	20,155	75		2,306	-17		22,461	58	
02-28-07	20,080	7		2,323	1		22,403	8	
01-31-07	20,073	43		2,322	2		22,395	45	
12-31-06	20,030	12	32	2,320	6	10	22,350	18	42
11-30-06	20,018	44		2,314	11		22,332	55	
10-31-06	19,974	46		2,303	28		22,277	74	
09-30-06	19,928	139		2,275	33		22,203	172	
08-31-06	19,789	-34		2,242	-7		22,031	-41	
07-31-06	19,823	31		2,249	29		22,072	60	
06-30-06	19,792		97	2,220		12	22,012		109
06-30-05	18,631		68	2,073		27	20,704		95
06-30-04	17,814		49	1,755		11	19,569		60
06-30-03	17,226		57	1,620		10	18,846		67
06-30-02	16,539		87	1,506		14	18,045		101
06-30-01	15,493		63	1,340		6	16,833		70
06-30-00	14,733		99	1,266		7	15,999		106
06-30-99	13,547		75	1,179		14	14,726		89
06-30-98	12,647			1,016			13,663		

(1) Adult inmate jurisdictional population includes on-grounds, off-grounds, out-of-state, escapees, and jail backlog and excludes offenders sentenced to the Youthful Offender System (Y.O.S.).

COLORADO DEPARTMENT OF CORRECTIONS
ADULT INMATE RELEASES FROM PRISON
TOTAL Population (Male and Female)

Date: 7/2/2008

	Parole				Discharge					Other				Total
	Discretionary*	Mandatory*	Mand. Repar.*	Com. Supv.	Sentence	H.B. 1087	Martin/Cooper	Chgs/Det.	Com Spv. Elim	Probation	Ct. Ord. Dsch.	Appeal Bond	Deceased	
Jun-08	418	209	100	0	37	62	9	16	0	15	9	0	3	878
May-08	455	188	78	0	38	63	6	14	0	14	14	0	5	875
Apr-08	512	219	93	0	36	51	5	19	0	15	9	0	4	963
Mar-08	425	182	116	0	27	52	8	22	0	5	10	0	3	850
Feb-08	422	214	82	0	35	49	3	17	0	9	6	1	5	843
Jan-08	531	179	76	0	33	66	10	21	0	6	9	0	4	935
Dec-07	474	157	75	0	35	55	10	17	0	17	7	0	8	855
Nov-07	492	154	53	0	29	56	11	16	0	21	14	0	3	849
Oct-07	514	185	98	0	24	55	11	12	0	12	8	0	2	921
Sep-07	467	153	47	0	39	41	6	9	0	5	13	1	3	784
Aug-07	457	192	114	0	34	54	8	21	0	16	14	0	5	915
Jul-07	423	196	115	0	34	58	6	22	0	7	10	0	4	875
Jun-07	433	188	92	0	19	49	13	11	0	9	8	0	2	824
May-07	499	216	129	0	31	43	7	20	0	14	9	0	4	972
Apr-07	447	197	100	0	26	51	9	16	0	6	10	0	6	868
Mar-07	415	187	140	0	33	64	4	14	0	14	13	1	3	888
Feb-07	405	235	80	0	24	58	12	19	0	15	5	0	0	853
Jan-07	542	192	42	0	37	59	5	15	0	15	16	0	9	932
Dec-06	349	179	59	0	27	44	10	14	0	13	6	1	2	704
Nov-06	422	202	70	0	30	45	12	12	0	16	11	0	6	826
Oct-06	426	186	84	0	36	44	11	10	0	6	7	1	5	816
Sep-06	348	180	65	0	29	44	13	15	0	13	7	0	2	716
Aug-06	430	239	104	0	37	52	10	21	0	17	11	0	2	923
Jul-06	350	174	87	0	43	52	9	20	0	17	6	0	7	765

Definitions of Release Types

Discretionary parole-Released to parole through Parole Board discretion prior to mandatory release or sentence discharge date.

Mandatory parole-Released to parole on mandatory release date.

Mand. Repar-Reparoled on specific date set by Parole Board (includes S.B. 252 reparoles). n/a - breakout not available prior to June 2004.

Com. Supv.-Released to serve 12 months of community supervision.

Sentence discharge-Completion of sentence with no further supervision.

H.B. 1087 discharge-Completion of sentence with no further supervision, subject to earn time provisions of H.B. 95-1087.

Martin/ Cooper discharge-Completion of sentence with no further supervision, sex offender subject to Martin/Cooper Supreme Court decision.

Chgs/ Det. discharge-Completion of sentence, released to other law enforcement for pending charges or detainees.

Com. Spv. Elim discharge-Completion of sentence following reincarceration on community supervision sentence.

Probation-Released by court to probation.

Ct. Ord. Dsch.-Released by court order.

Appeal Bond-Released by court to appeal bond.

Deceased-Offender death in prison.

***Due to the decrease in community transportation services, the Department implemented a procedural change in December 2005 with regards to releasing inmates on weekends. As a result of this change, discretionary releases have increased and mandatory releases have decreased.**

COLORADO DEPARTMENT OF CORRECTIONS
ADULT INMATE RELEASES FROM PRISON
Male Population Only

Date: 7/2/2008

	Parole				Discharge					Other				Total
	Discretionary*	Mandatory*	Mand. Repar.*	Com. Supv.	Sentence	H.B. 1087	Martin/Cooper	Chgs/Det.	Com Spv. Elim	Probation	Ct. Ord. Dsch.	Appeal Bond	Deceased	
Jun-08	370	187	89	0	36	57	9	14	0	13	7	0	2	784
May-08	372	166	63	0	37	54	6	12	0	12	14	0	5	741
Apr-08	440	181	82	0	35	45	5	17	0	15	7	0	3	830
Mar-08	367	167	98	0	25	46	8	19	0	5	9	0	2	746
Feb-08	362	189	72	0	34	43	3	16	0	7	4	1	5	736
Jan-08	445	156	64	0	31	59	10	16	0	5	6	0	4	796
Dec-07	401	141	66	0	31	45	10	16	0	16	7	0	8	741
Nov-07	425	133	49	0	25	50	11	14	0	14	13	0	3	737
Oct-07	432	154	84	0	23	48	11	12	0	11	7	0	2	784
Sep-07	413	131	41	0	36	35	6	8	0	4	13	1	3	691
Aug-07	377	170	104	0	29	46	8	20	0	14	10	0	5	783
Jul-07	360	171	94	0	34	52	6	20	0	7	6	0	4	754
Jun-07	366	172	79	0	18	45	12	11	0	8	8	0	2	721
May-07	432	194	110	0	30	37	7	18	0	11	9	0	3	851
Apr-07	382	179	90	0	24	47	8	15	0	4	8	0	6	763
Mar-07	344	166	118	0	28	56	4	14	0	10	13	0	3	756
Feb-07	330	209	71	0	23	51	11	16	0	14	5	0	0	730
Jan-07	453	169	37	0	34	53	5	15	0	14	13	0	7	800
Dec-06	298	160	56	0	24	38	10	14	0	13	6	1	2	622
Nov-06	358	178	62	0	28	42	12	12	0	13	10	0	6	721
Oct-06	373	163	73	0	34	36	11	9	0	6	6	1	5	717
Sep-06	300	148	59	0	29	40	13	12	0	12	7	0	2	622
Aug-06	364	209	89	0	34	44	10	21	0	14	10	0	2	797
Jul-06	310	158	72	0	40	45	9	18	0	15	4	0	7	678

Definitions of Release Types

Discretionary parole-Released to parole through Parole Board discretion prior to mandatory release or sentence discharge date.

Mandatory parole-Released to parole on mandatory release date.

Mand. Repar-Reparoled on specific date set by Parole Board (includes S.B. 252 reparaes). n/a - breakout not available prior to June 2004.

Com. Supv.-Released to serve 12 months of community supervision.

Sentence discharge-Completion of sentence with no further supervision.

H.B. 1087 discharge-Completion of sentence with no further supervision, subject to earn time provisions of H.B. 95-1087.

Martin/ Cooper discharge-Completion of sentence with no further supervision, sex offender subject to Martin/Cooper Supreme Court decision.

Chgs/ Det. discharge-Completion of sentence, released to other law enforcement for pending charges or detainees.

Com. Spv. Elim discharge-Completion of sentence following reincarceration on community supervision sentence.

Probation-Released by court to probation.

Ct. Ord. Dsch.-Released by court order.

Appeal Bond-Released by court to appeal bond.

Deceased-Offender death in prison.

***Due to the decrease in community transportation services, the Department implemented a procedural change in December 2005 with regards to releasing inmates on weekends. As a result of this change, discretionary releases have increased and mandatory releases have decreased.**

COLORADO DEPARTMENT OF CORRECTIONS
ADULT INMATE RELEASES FROM PRISON
Female Population Only

Date: 7/2/2008

	Parole				Discharge					Other				Total
	Discretionary*	Mandatory*	Mand. Repar.*	Com. Supv.	Sentence	H.B. 1087	Martin/Cooper	Chgs/Det.	Com Spv. Elim	Probation	Ct. Ord. Dsch.	Appeal Bond	Deceased	
Jun-08	48	22	11	0	1	5	0	2	0	2	2	0	1	94
May-08	83	22	15	0	1	9	0	2	0	2	0	0	0	134
Apr-08	72	38	11	0	1	6	0	2	0	0	2	0	1	133
Mar-08	58	15	18	0	2	6	0	3	0	0	1	0	1	104
Feb-08	60	25	10	0	1	6	0	1	0	2	2	0	0	107
Jan-08	86	23	12	0	2	7	0	5	0	1	3	0	0	139
Dec-07	73	16	9	0	4	10	0	1	0	1	0	0	0	114
Nov-07	67	21	4	0	4	6	0	2	0	7	1	0	0	112
Oct-07	82	31	14	0	1	7	0	0	0	1	1	0	0	137
Sep-07	54	22	6	0	3	6	0	1	0	1	0	0	0	93
Aug-07	80	22	10	0	5	8	0	1	0	2	4	0	0	132
Jul-07	63	25	21	0	0	6	0	2	0	0	4	0	0	121
Jun-07	67	16	13	0	1	4	1	0	0	1	0	0	0	103
May-07	67	22	19	0	1	6	0	2	0	3	0	0	1	121
Apr-07	65	18	10	0	2	4	1	1	0	2	2	0	0	105
Mar-07	71	21	22	0	5	8	0	0	0	4	0	1	0	132
Feb-07	75	26	9	0	1	7	1	3	0	1	0	0	0	123
Jan-07	89	23	5	0	3	6	0	0	0	1	3	0	2	132
Dec-06	51	19	3	0	3	6	0	0	0	0	0	0	0	82
Nov-06	64	24	8	0	2	3	0	0	0	3	1	0	0	105
Oct-06	53	23	11	0	2	8	0	1	0	0	1	0	0	99
Sep-06	48	32	6	0	0	4	0	3	0	1	0	0	0	94
Aug-06	66	30	15	0	3	8	0	0	0	3	1	0	0	126
Jul-06	40	16	15	0	3	7	0	2	0	2	2	0	0	87

Definitions of Release Types

Discretionary parole-Released to parole through Parole Board discretion prior to mandatory release or sentence discharge date.

Mandatory parole-Released to parole on mandatory release date.

Mand. Repar-Reparoled on specific date set by Parole Board (includes S.B. 252 reparoles). n/a - breakout not available prior to June 2004.

Com. Supv.-Released to serve 12 months of community supervision.

Sentence discharge-Completion of sentence with no further supervision.

H.B. 1087 discharge-Completion of sentence with no further supervision, subject to earn time provisions of H.B. 95-1087.

Martin/ Cooper discharge-Completion of sentence with no further supervision, sex offender subject to Martin/Cooper Supreme Court decision.

Chgs/ Det. discharge-Completion of sentence, released to other law enforcement for pending charges or detainees.

Com. Spv. Elim discharge-Completion of sentence following reincarceration on community supervision sentence.

Probation-Released by court to probation.

Ct. Ord. Dsch.-Released by court order.

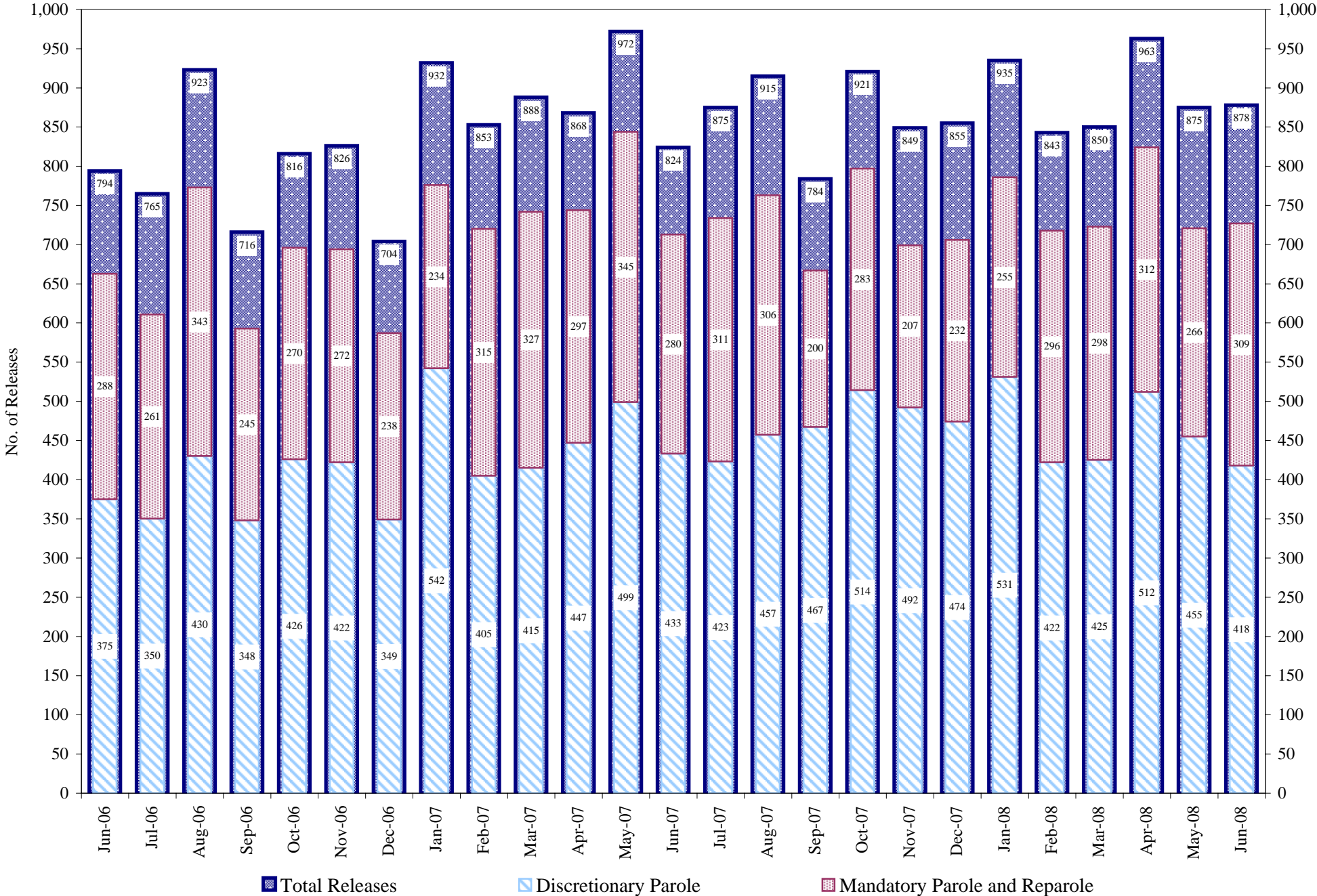
Appeal Bond-Released by court to appeal bond.

Deceased-Offender death in prison.

*Due to the decrease in community transportation services, the Department implemented a procedural change in December 2005 with regards to releasing inmates on weekends. As a result of this change, discretionary releases have increased and mandatory releases have decreased.

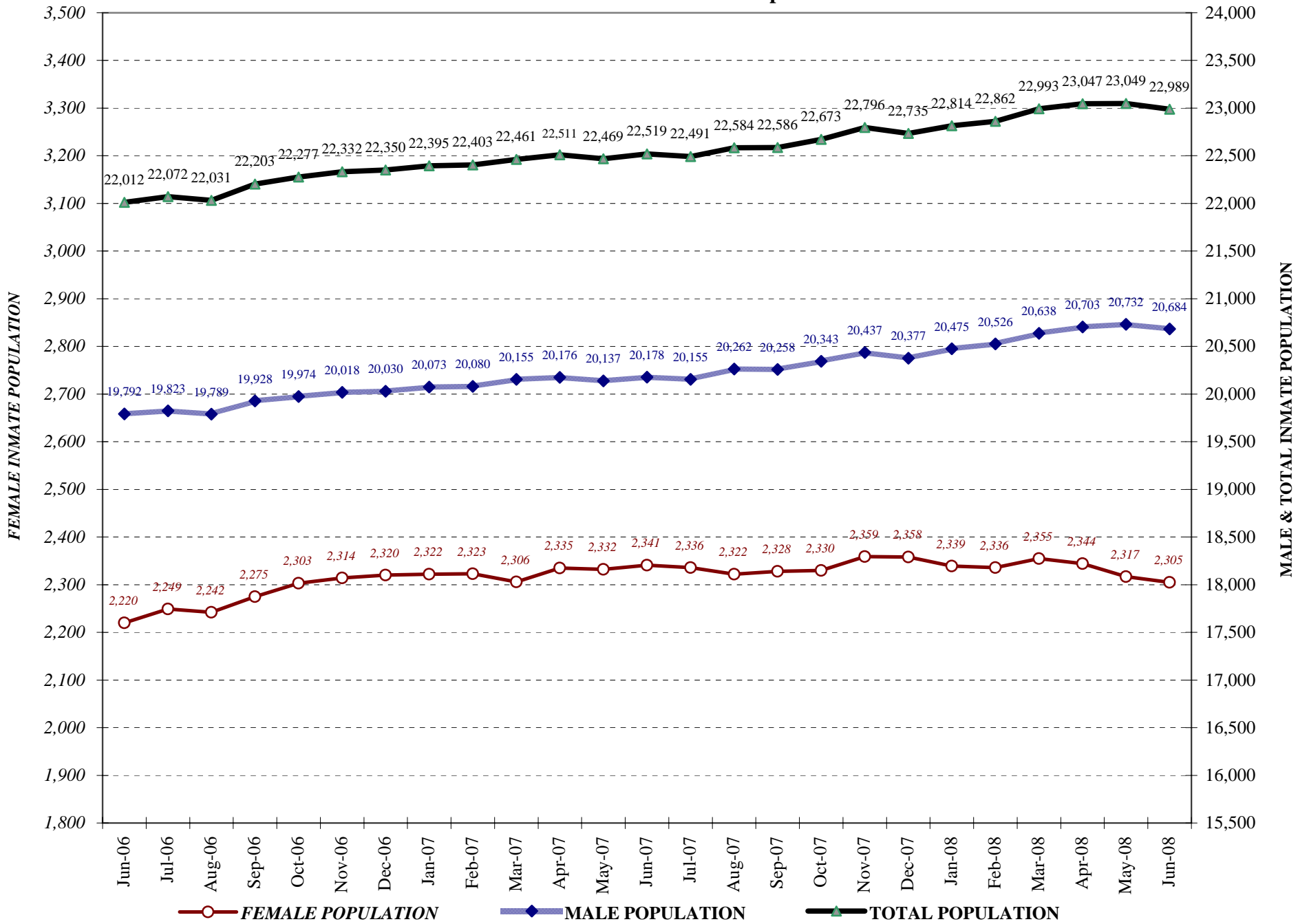
COLORADO DEPARTMENT OF CORRECTIONS

Adult Prison Releases

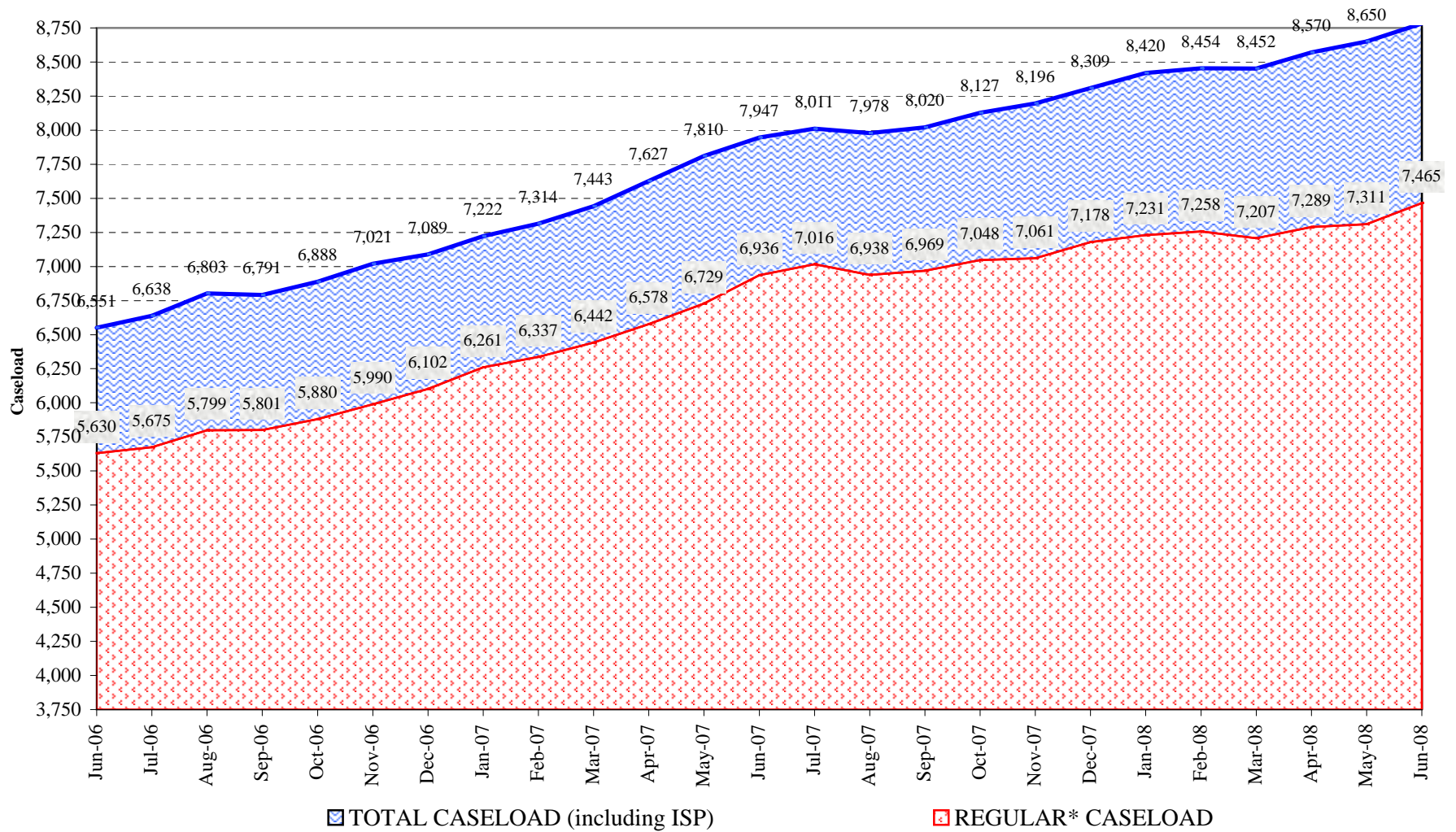


Total releases include releases to discretionary parole, mandatory parole and reparole, all types of discharges and other releases as detailed on the previous page.

COLORADO DEPARTMENT OF CORRECTIONS Adult Jurisdiction Inmate Population



COLORADO DEPARTMENT OF CORRECTIONS Parole Population



* Regular caseload includes interstate parole, but excludes out-of-state parolees and absconders.