

**COLORADO DEPARTMENT OF CORRECTIONS
MONTHLY POPULATION AND CAPACITY REPORT
AS OF MAY 31, 2008**

3-Jun-08

	04/30/08	CAPACITY CHANGES	----- 05/31/08 -----		----- 05/31/07 -----	
	OPERATIONAL CAPACITY*		OPERATIONAL CAPACITY*	ON-GRDS POPULATION	OPERATIONAL CAPACITY*	ON-GRDS POPULATION
COLO STATE PENITENTIARY	756		756	710	756	751
CENTENNIAL CORR FAC	336		336	302	336	320
STERLING CORR FAC	2,545		2,545	2,508	2,545	2,512
LIMON CORR FAC	953		953	937	953	936
ARK VALLEY CORR FAC	1,007		1,007	989	1,007	1,006
BUENA VISTA CORR FAC	926		926	920	926	901
BUENA VISTA MIN CTR	292		292	288	292	282
COLO TERR CORR FAC	936		936	934	786	789
FORT LYON CORR FAC	500		500	488	500	493
FREMONT CORR FAC	1,660		1,660	1,651	1,471	1,465
LA VISTA CORR FAC	519		519	476	519	493
ARROWHEAD CORR CTR	494		494	488	494	493
FOUR MILE CORR CTR	499		499	494	499	493
TRINIDAD CORR FAC	484		484	481	484	477
S.T.U. at Y.O.S.	30		30	29	30	27
SKYLINE CORR CTR	249		249	245	249	246
COLORADO CORR CTR	150		150	150	150	149
DELTA CORR CTR	484		484	471	484	463
RIFLE CORR CTR	192		192	188	192	187
COLO CORR ALT PROGRAM	100		100	81	100	98
COLO WOMEN'S CORR FAC	224		224	215	224	207
DENVER WOMEN'S CORR FAC	866		866	775	900	819
DENVER REC DIAG CTR	480		480	468	480	452
SAN CARLOS CORR FAC	255		255	247	255	243
SUBTOTAL	14,937	0	14,937	14,535	14,632	14,302
CONTRACTS:						
BENT COUNTY CORR CTR	724	742	1,466	741	724	669
HUERFANO COUNTY CORR CTR	774		774	766	774	754
CROWLEY COUNTY CORR FAC	1,720		1,720	1,675	1,720	1,477
KIT CARSON COUNTY CORR FAC	820	742	1,562	1,079	820	784
CHEYENNE MTN REENTRY CTR	592	80	672	529	500	498
HIGH PLAINS CORR FAC	270		270	240	270	189
NORTH FORK OK CORR FAC	480	-367	113	113	480	484
OFF-GROUNDS POPULATION:						
ESCAPEES/WALKAWAYS				278		284
REVOICATIONS-JAIL				235		224
				0		0
JAIL BACKLOG:						
BACKLOG LESS THAN 72 HOURS			92		78	
BACKLOG GREATER THAN 72 HOURS (FISCAL YTD AVE = 125)			0		0	
BACKLOG-PAROLEES AWAITING TRANSFER			28		43	
TOTAL JAIL BACKLOG				120		121
COUNTY JAIL CONTRACTS				61		90
COMMUNITY CORRECTIONS						
COMMUNITY						
RESIDENTIAL	1,334	22	1,356	1,356	1,363	1,363
PAROLE REVOICATIONS	1	0	1	1	1	1
REVOKED-RET TO CUST	256	-11	245	245	245	245
NON-RESIDENTIAL	74	-11	63	63	63	63
REGRESSIONS	54	-6	48	48	27	27
TOTAL COMMUNITY	1,719	-6	1,713	1,713	1,699	1,699
ISP						
RESIDENTIAL	916	-15	901	901	862	862
NON-RESIDENTIAL	49	9	58	58	27	27
REGRESSIONS	11	-6	5	5	5	5
TOTAL ISP	976	-12	964	964	894	894
TOTAL COMM. CORRECTIONS	2,695	-18	2,677	2,677	2,593	2,593
MALE POPULATION			20,732		20,137	
FEMALE POPULATION			2,317		2,332	
TOTAL INMATE JURISDICTIONAL POPULATION				23,049		22,469

*OPERATIONAL CAPACITY INCLUDES ALL BEDS AVAILABLE FOR USE, INCLUDING MANAGEMENT CONTROL UNITS, BUT EXCLUDES EMERGENCY DOUBLE BUNKING

COLORADO DEPARTMENT OF CORRECTIONS
MONTHLY POPULATION AND CAPACITY REPORT
AS OF MAY 31, 2008

3-Jun-08

CURRENT MONTH CHANGES IN CAPACITY:

May-08	BENT COUNTY CORR CTR	INCREASED CAPACITY	742
	KIT CARSON COUNTY CORR FAC	INCREASED CAPACITY	742
	CHEYENNE MTN REENTRY CTR	INCREASED CAPACITY	80
	NORTH FORK OK CORR FAC	RETURNED OUT-OF-STATE PLACEMENTS	-367

NET MONTHLY GROWTH RATE:

CURRENT MONTH	2
FISCAL YEAR-TO-DATE AVERAGE	48

YOUTHFUL OFFENDER SYSTEM

	----- 05/31/08 -----				05/31/07
	PUEBLO	CONTRACT FACILITIES	COMM. CORR.	TOTAL POPULATION	TOTAL POPULATION
INTAKE/IDO	6			6	0
RFP/REMEDICATION	5			5	9
PHASE I	151			151	152
PHASE II	13			13	11
PHASE III	2		36	38	31
OFF GROUNDS/BACKLOG				3	10
TOTAL Y.O.S. POPULATION	177	0	36	216	213

	CURRENT MONTH	FISCAL YR. TO DATE
YOS ADMISSIONS	4	54
YOS RELEASES:		
COMPLETION OF SENTENCE	4	30
JUDICIAL RELEASE TO PROB/CT ORD DISCHG	0	3
JUDICIAL TRANSFER TO DOC	0	0
TERMINATION/FAILURE	4	14
DECEASED	0	0
TOTAL RELEASES	8	47

PAROLE CASELOAD

	----- 05/31/08 -----			----- 04/30/08 -----		----- 05/31/07 -----	
	DOMESTIC	INTERST PAR/PROB	TOTAL CASELOAD	DOMESTIC	TOTAL CASELOAD	DOMESTIC	TOTAL CASELOAD
DENVER REGION							
REGULAR	2,608	79	2,687	2,615	2,697	2,417	2,517
ISP	658		658	624	624	508	508
SUBTOTAL	3,266	79	3,345	3,239	3,321	2,925	3,025
NORTHEAST REGION							
REGULAR	1,946	98	2,044	1,948	2,038	1,764	1,814
ISP	285		285	275	275	216	216
SUBTOTAL	2,231	98	2,329	2,223	2,313	1,980	2,030
SOUTHEAST REGION							
REGULAR	1,774	83	1,857	1,756	1,843	1,594	1,684
ISP	277		277	272	272	252	252
SUBTOTAL	2,051	83	2,134	2,028	2,115	1,846	1,936
WESTERN REGION							
REGULAR	680	43	723	668	711	675	714
ISP	119		119	110	110	105	105
SUBTOTAL	799	43	842	778	821	780	819
TOTAL CASELOAD							
REGULAR	7,008	303	7,311	6,987	7,289	6,450	6,729
ISP	1,339		1,339	1,281	1,281	1,081	1,081
TOTAL	8,347	303	8,650	8,268	8,570	7,531	7,810
ADDITIONAL CASELOAD:							
OUT-OF-STATE PAROLEES			1,941		1,938		1,819
PAROLEE ABSCONDERS			799		819		757

COLORADO DEPARTMENT OF CORRECTIONS
MONTHLY POPULATION AND CAPACITY REPORT
AS OF MAY 31, 2008

		05/31/2008 Population			----- FINAL CUSTODY DESIGNATION* -----					
		On-Grds.	Off-Grds	Total	Uncls.	Ad.Seg	Close	Medium	Min.-Res.	Minimum
Male Population	COLO STATE PENITENTIARY	710	6	716		713	3			
	CENTENNIAL CORR FAC	302	1	303		9	292			2
	STERLING CORR FAC	2,508	38	2,546		280	756	525	553	432
	LIMON CORR FAC	937	9	946		0	655	199	75	17
	ARK VALLEY CORR FAC	989	9	998		7	414	336	180	61
	BUENA VISTA CORR FAC	920	17	937		10	357	353	138	79
	BUENA VISTA MIN CTR	288	3	291		0	0	0	217	74
	COLO TERR CORR FAC	934	12	946		10	236	289	271	140
	FORT LYON CORR FAC	488	11	499		0	29	199	184	87
	FREMONT CORR FAC	1,651	24	1,675		23	190	469	568	425
	ARROWHEAD CORR CTR	488	3	491				2	301	188
	FOUR MILE CORR CTR	494	5	499				2	350	147
	TRINIDAD CORR FAC	481	11	492				3	428	61
	S.T.U. at Y.O.S.	29	1	30				4	22	4
	SKYLINE CORR CTR	245	0	245						245
	COLORADO CORR CTR	150	0	150					1	149
	DELTA CORR CTR	471	7	478					2	476
	RIFLE CORR CTR	188	4	192				1	2	189
	COLO CORR ALT PROGRAM	77	7	84				1	8	75
	DENVER REC DIAG CTR	467	15	482	164	9	38	97	124	50
	SAN CARLOS CORR FAC	247	5	252		24	115	51	35	27
	CONTRACTS:									
	BENT COUNTY CORR CTR	741	13	754			7	420	225	102
	HUERFANO COUNTY CORR CTR	766	12	778		1	5	407	221	144
	CROWLEY COUNTY CORR FAC	1,675	29	1,704		4	5	855	580	260
	KIT CARSON COUNTY CORR FAC	1,079	7	1,086			9	527	330	220
	CHEYENNE MTN REENTRY CTR	529	2	531			4	121	246	160
	NORTH FORK OK CORR FAC	113	0	113				35	53	25
	COMMUNITY/ISP	1,806	108	1,914			6	49	93	1,766
	Total Classified Male Population	19,773	359	20,132	164	1,090	3,121	4,945	5,207	5,605
Percent of Total				0.8%	5.4%	15.5%	24.6%	25.9%	27.8%	
Unclassified Facilities:										
JAIL BACKLOG/REVOCATIONS	91	0	91							
COUNTY JAIL CONTRACTS	61	0	61							
REVOKED TO JAIL	0	0	0							
REVOKED TO COMM CTR	1	0	1							
REVOKED-RET TO CUST FAC	164	40	204							
COMM/ISP REGRESSIONS	0	47	47							
ESCAPEES/WALKAWAYS	41	155	196							
Total Unclassified Facilities	358	242	600							
Total Male Population	20,131	601	20,732							
Female Population	COLO WOMEN'S CORR FAC	215	2	217			49	31	58	79
	DENVER WOMEN'S CORR FAC	775	9	784	2	26	130	128	305	193
	LA VISTA CORR FAC	476	11	487			30	83	244	130
	COLO CORR ALT PROGRAM	4	1	5					1	4
	DENVER REC DIAG CTR INF	1	0	1					1	
	COLO TERR CORR FAC INF.	0	0	0						
	CONTRACTS:									
	HIGH PLAINS CORR FAC	240	4	244			2	17	152	73
	COMMUNITY/ISP	451	13	464			1	6	59	398
	Total Classified Female Population	2,162	40	2,202	2	26	212	265	820	877
	Percent of Total				0.1%	1.2%	9.6%	12.0%	37.2%	39.8%
	Unclassified Facilities:									
	JAIL BACKLOG	29	0	29						
COUNTY JAIL CONTRACTS	0	0	0							
REVOKED TO JAIL	0	0	0							
REVOKED TO COMM CTR	0	0	0							
REVOKED-RET TO CUST FAC	35	6	41							
COMM/ISP REGRESSIONS	0	6	6							
ESCAPEES/WALKAWAYS	3	36	39							
Total Unclassified Facilities	67	48	115							
Total Female Population	2,229	88	2,317							

COLORADO DEPARTMENT OF CORRECTIONS
ADULT INMATE JURISDICTIONAL POPULATION (1)

DATE: 6/3/2008

DATE	MALE POPULATION			FEMALE POPULATION			TOTAL POPULATION		
	Male Population	Net Change	Fiscal Y-T-D Average	Female Population	Net Change	Fiscal Y-T-D Average	Total Population	Net Change	Fiscal Y-T-D Average
05-31-08	20,732	29	50	2,317	-27	-2	23,049	2	48
04-30-08	20,703	65		2,344	-11		23,047	54	
03-31-08	20,638	112		2,355	19		22,993	131	
02-29-08	20,526	51		2,336	-3		22,862	48	
01-31-08	20,475	98		2,339	-19		22,814	79	
12-31-07	20,377	-60		2,358	-1		22,735	-61	
11-30-07	20,437	94		2,359	29		22,796	123	
10-31-07	20,343	85		2,330	2		22,673	87	
09-30-07	20,258	-4		2,328	6		22,586	2	
08-31-07	20,262	107		2,322	-14		22,584	93	
07-31-07	20,155	-23		2,336	-5		22,491	-28	
06-30-07	20,178	41		2,341	9		22,519	50	
05-31-07	20,137	-39		2,332	-3		22,469	-42	
04-30-07	20,176	21		2,335	29		22,511	50	
03-31-07	20,155	75		2,306	-17		22,461	58	
02-28-07	20,080	7		2,323	1		22,403	8	
01-31-07	20,073	43		2,322	2		22,395	45	
12-31-06	20,030	12	32	2,320	6	10	22,350	18	42
11-30-06	20,018	44		2,314	11		22,332	55	
10-31-06	19,974	46		2,303	28		22,277	74	
09-30-06	19,928	139		2,275	33		22,203	172	
08-31-06	19,789	-34		2,242	-7		22,031	-41	
07-31-06	19,823	31		2,249	29		22,072	60	
06-30-06	19,792		97	2,220		12	22,012		109
06-30-05	18,631		68	2,073		27	20,704		95
06-30-04	17,814		49	1,755		11	19,569		60
06-30-03	17,226		57	1,620		10	18,846		67
06-30-02	16,539		87	1,506		14	18,045		101
06-30-01	15,493		63	1,340		6	16,833		70
06-30-00	14,733		99	1,266		7	15,999		106
06-30-99	13,547		75	1,179		14	14,726		89
06-30-98	12,647		81	1,016		9	13,663		89
06-30-97	11,681			909			12,590		

(1) Adult inmate jurisdictional population includes on-grounds, off-grounds, out-of-state, escapees, and jail backlog and excludes offenders sentenced to the Youthful Offender System (Y.O.S.).

COLORADO DEPARTMENT OF CORRECTIONS
ADULT INMATE RELEASES FROM PRISON
TOTAL Population (Male and Female)

Date: 6/3/2008

	Parole				Discharge					Other				Total
	Discretionary*	Mandatory*	Mand. Repar.*	Com. Supv.	Sentence	H.B. 1087	Martin/Cooper	Chgs/Det.	Com Spv. Elim	Probation	Ct. Ord. Dsch.	Appeal Bond	Deceased	
May-08	455	188	78	0	38	63	6	14	0	14	14	0	5	875
Apr-08	512	219	93	0	36	51	5	19	0	15	9	0	4	963
Mar-08	425	182	116	0	27	52	8	22	0	5	10	0	3	850
Feb-08	422	214	82	0	35	49	3	17	0	9	6	1	5	843
Jan-08	531	179	76	0	33	66	10	21	0	6	9	0	4	935
Dec-07	474	157	75	0	35	55	10	17	0	17	7	0	8	855
Nov-07	492	154	53	0	29	56	11	16	0	21	14	0	3	849
Oct-07	514	185	98	0	24	55	11	12	0	12	8	0	2	921
Sep-07	467	153	47	0	39	41	6	9	0	5	13	1	3	784
Aug-07	457	192	114	0	34	54	8	21	0	16	14	0	5	915
Jul-07	423	196	115	0	34	58	6	22	0	7	10	0	4	875
Jun-07	433	188	92	0	19	49	13	11	0	9	8	0	2	824
May-07	499	216	129	0	31	43	7	20	0	14	9	0	4	972
Apr-07	447	197	100	0	26	51	9	16	0	6	10	0	6	868
Mar-07	415	187	140	0	33	64	4	14	0	14	13	1	3	888
Feb-07	405	235	80	0	24	58	12	19	0	15	5	0	0	853
Jan-07	542	192	42	0	37	59	5	15	0	15	16	0	9	932
Dec-06	349	179	59	0	27	44	10	14	0	13	6	1	2	704
Nov-06	422	202	70	0	30	45	12	12	0	16	11	0	6	826
Oct-06	426	186	84	0	36	44	11	10	0	6	7	1	5	816
Sep-06	348	180	65	0	29	44	13	15	0	13	7	0	2	716
Aug-06	430	239	104	0	37	52	10	21	0	17	11	0	2	923
Jul-06	350	174	87	0	43	52	9	20	0	17	6	0	7	765
Jun-06	375	199	89	0	37	43	10	16	0	16	7	0	2	794

Definitions of Release Types

Discretionary parole-Released to parole through Parole Board discretion prior to mandatory release or sentence discharge date.

Mandatory parole-Released to parole on mandatory release date.

Mand. Repar-Reparoled on specific date set by Parole Board (includes S.B. 252 reparoles). n/a - breakout not available prior to June 2004.

Com. Supv.-Released to serve 12 months of community supervision.

Sentence discharge-Completion of sentence with no further supervision.

H.B. 1087 discharge-Completion of sentence with no further supervision, subject to earn time provisions of H.B. 95-1087.

Martin/ Cooper discharge-Completion of sentence with no further supervision, sex offender subject to Martin/Cooper Supreme Court decision.

Chgs/ Det. discharge-Completion of sentence, released to other law enforcement for pending charges or detainees.

Com. Spv. Elim discharge-Completion of sentence following reincarceration on community supervision sentence.

Probation-Released by court to probation.

Ct. Ord. Dsch.-Released by court order.

Appeal Bond-Released by court to appeal bond.

Deceased-Offender death in prison.

*Due to the decrease in community transportation services, the Department implemented a procedural change in December 2005 with regards to releasing inmates on weekends. As a result of this change, discretionary releases have increased and mandatory releases have decreased.

COLORADO DEPARTMENT OF CORRECTIONS

ADULT INMATE RELEASES FROM PRISON

Male Population Only

Date: 6/3/2008

	Parole				Discharge					Other				Total
	Discretionary*	Mandatory*	Mand. Repar.*	Com. Supv.	Sentence	H.B. 1087	Martin/Cooper	Chgs/Det.	Com Spv. Elim	Probation	Ct. Ord. Dsch.	Appeal Bond	Deceased	
May-08	372	166	63	0	37	54	6	12	0	12	14	0	5	741
Apr-08	440	181	82	0	35	45	5	17	0	15	7	0	3	830
Mar-08	367	167	98	0	25	46	8	19	0	5	9	0	2	746
Feb-08	362	189	72	0	34	43	3	16	0	7	4	1	5	736
Jan-08	445	156	64	0	31	59	10	16	0	5	6	0	4	796
Dec-07	401	141	66	0	31	45	10	16	0	16	7	0	8	741
Nov-07	425	133	49	0	25	50	11	14	0	14	13	0	3	737
Oct-07	432	154	84	0	23	48	11	12	0	11	7	0	2	784
Sep-07	413	131	41	0	36	35	6	8	0	4	13	1	3	691
Aug-07	377	170	104	0	29	46	8	20	0	14	10	0	5	783
Jul-07	360	171	94	0	34	52	6	20	0	7	6	0	4	754
Jun-07	366	172	79	0	18	45	12	11	0	8	8	0	2	721
May-07	432	194	110	0	30	37	7	18	0	11	9	0	3	851
Apr-07	382	179	90	0	24	47	8	15	0	4	8	0	6	763
Mar-07	344	166	118	0	28	56	4	14	0	10	13	0	3	756
Feb-07	330	209	71	0	23	51	11	16	0	14	5	0	0	730
Jan-07	453	169	37	0	34	53	5	15	0	14	13	0	7	800
Dec-06	298	160	56	0	24	38	10	14	0	13	6	1	2	622
Nov-06	358	178	62	0	28	42	12	12	0	13	10	0	6	721
Oct-06	373	163	73	0	34	36	11	9	0	6	6	1	5	717
Sep-06	300	148	59	0	29	40	13	12	0	12	7	0	2	622
Aug-06	364	209	89	0	34	44	10	21	0	14	10	0	2	797
Jul-06	310	158	72	0	40	45	9	18	0	15	4	0	7	678
Jun-06	325	180	74	0	32	41	10	13	0	15	6	0	2	698

Definitions of Release Types

Discretionary parole-Released to parole through Parole Board discretion prior to mandatory release or sentence discharge date.

Mandatory parole-Released to parole on mandatory release date.

Mand. Repar-Reparoled on specific date set by Parole Board (includes S.B. 252 reparoles). n/a - breakout not available prior to June 2004.

Com. Supv.-Released to serve 12 months of community supervision.

Sentence discharge-Completion of sentence with no further supervision.

H.B. 1087 discharge-Completion of sentence with no further supervision, subject to earn time provisions of H.B. 95-1087.

Martin/ Cooper discharge-Completion of sentence with no further supervision, sex offender subject to Martin/Cooper Supreme Court decision.

Chgs/ Det. discharge-Completion of sentence, released to other law enforcement for pending charges or detainees.

Com. Spv. Elim discharge-Completion of sentence following reincarceration on community supervision sentence.

Probation-Released by court to probation.

Ct. Ord. Dsch.-Released by court order.

Appeal Bond-Released by court to appeal bond.

Deceased-Offender death in prison.

***Due to the decrease in community transportation services, the Department implemented a procedural change in December 2005 with regards to releasing inmates on weekends. As a result of this change, discretionary releases have increased and mandatory releases have decreased.**

COLORADO DEPARTMENT OF CORRECTIONS
ADULT INMATE RELEASES FROM PRISON
Female Population Only

Date: 6/3/2008

	Parole				Discharge					Other				Total
	Discretionary*	Mandatory*	Mand. Repar.*	Com. Supv.	Sentence	H.B. 1087	Martin/Cooper	Chgs/Det.	Com Spv. Elim	Probation	Ct. Ord. Dsch.	Appeal Bond	Deceased	
May-08	83	22	15	0	1	9	0	2	0	2	0	0	0	134
Apr-08	72	38	11	0	1	6	0	2	0	0	2	0	1	133
Mar-08	58	15	18	0	2	6	0	3	0	0	1	0	1	104
Feb-08	60	25	10	0	1	6	0	1	0	2	2	0	0	107
Jan-08	86	23	12	0	2	7	0	5	0	1	3	0	0	139
Dec-07	73	16	9	0	4	10	0	1	0	1	0	0	0	114
Nov-07	67	21	4	0	4	6	0	2	0	7	1	0	0	112
Oct-07	82	31	14	0	1	7	0	0	0	1	1	0	0	137
Sep-07	54	22	6	0	3	6	0	1	0	1	0	0	0	93
Aug-07	80	22	10	0	5	8	0	1	0	2	4	0	0	132
Jul-07	63	25	21	0	0	6	0	2	0	0	4	0	0	121
Jun-07	67	16	13	0	1	4	1	0	0	1	0	0	0	103
May-07	67	22	19	0	1	6	0	2	0	3	0	0	1	121
Apr-07	65	18	10	0	2	4	1	1	0	2	2	0	0	105
Mar-07	71	21	22	0	5	8	0	0	0	4	0	1	0	132
Feb-07	75	26	9	0	1	7	1	3	0	1	0	0	0	123
Jan-07	89	23	5	0	3	6	0	0	0	1	3	0	2	132
Dec-06	51	19	3	0	3	6	0	0	0	0	0	0	0	82
Nov-06	64	24	8	0	2	3	0	0	0	3	1	0	0	105
Oct-06	53	23	11	0	2	8	0	1	0	0	1	0	0	99
Sep-06	48	32	6	0	0	4	0	3	0	1	0	0	0	94
Aug-06	66	30	15	0	3	8	0	0	0	3	1	0	0	126
Jul-06	40	16	15	0	3	7	0	2	0	2	2	0	0	87
Jun-06	50	19	15	0	5	2	0	3	0	1	1	0	0	96

Definitions of Release Types

Discretionary parole-Released to parole through Parole Board discretion prior to mandatory release or sentence discharge date.

Mandatory parole-Released to parole on mandatory release date.

Mand. Repar-Reparoled on specific date set by Parole Board (includes S.B. 252 reparoles). n/a - breakout not available prior to June 2004.

Com. Supv.-Released to serve 12 months of community supervision.

Sentence discharge-Completion of sentence with no further supervision.

H.B. 1087 discharge-Completion of sentence with no further supervision, subject to earn time provisions of H.B. 95-1087.

Martin/ Cooper discharge-Completion of sentence with no further supervision, sex offender subject to Martin/Cooper Supreme Court decision.

Chgs/ Det. discharge-Completion of sentence, released to other law enforcement for pending charges or detainees.

Com. Spv. Elim discharge-Completion of sentence following reincarceration on community supervision sentence.

Probation-Released by court to probation.

Ct. Ord. Dsch.-Released by court order.

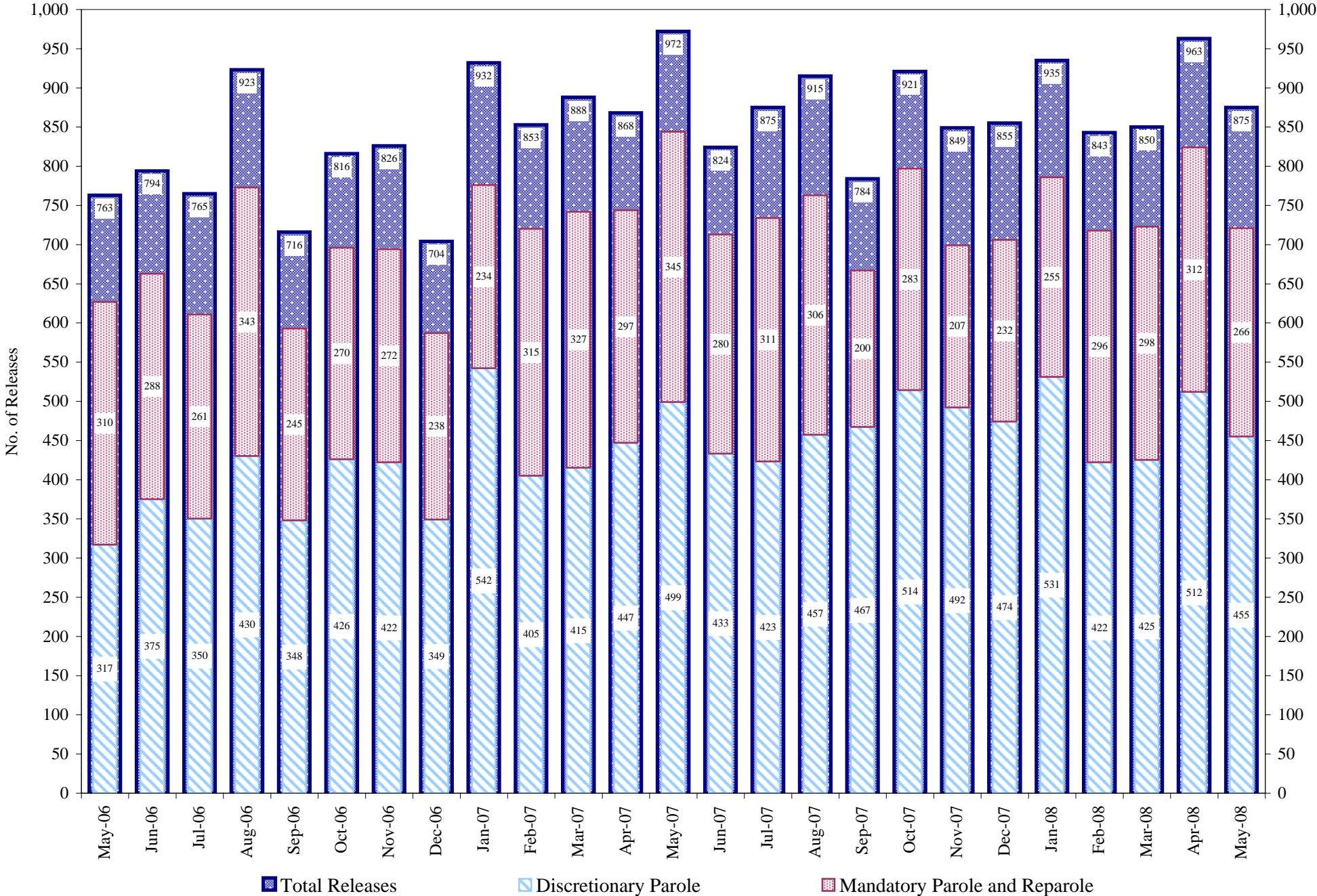
Appeal Bond-Released by court to appeal bond.

Deceased-Offender death in prison.

***Due to the decrease in community transportation services, the Department implemented a procedural change in December 2005 with regards to releasing inmates on weekends. As a result of this change, discretionary releases have increased and mandatory releases have decreased.**

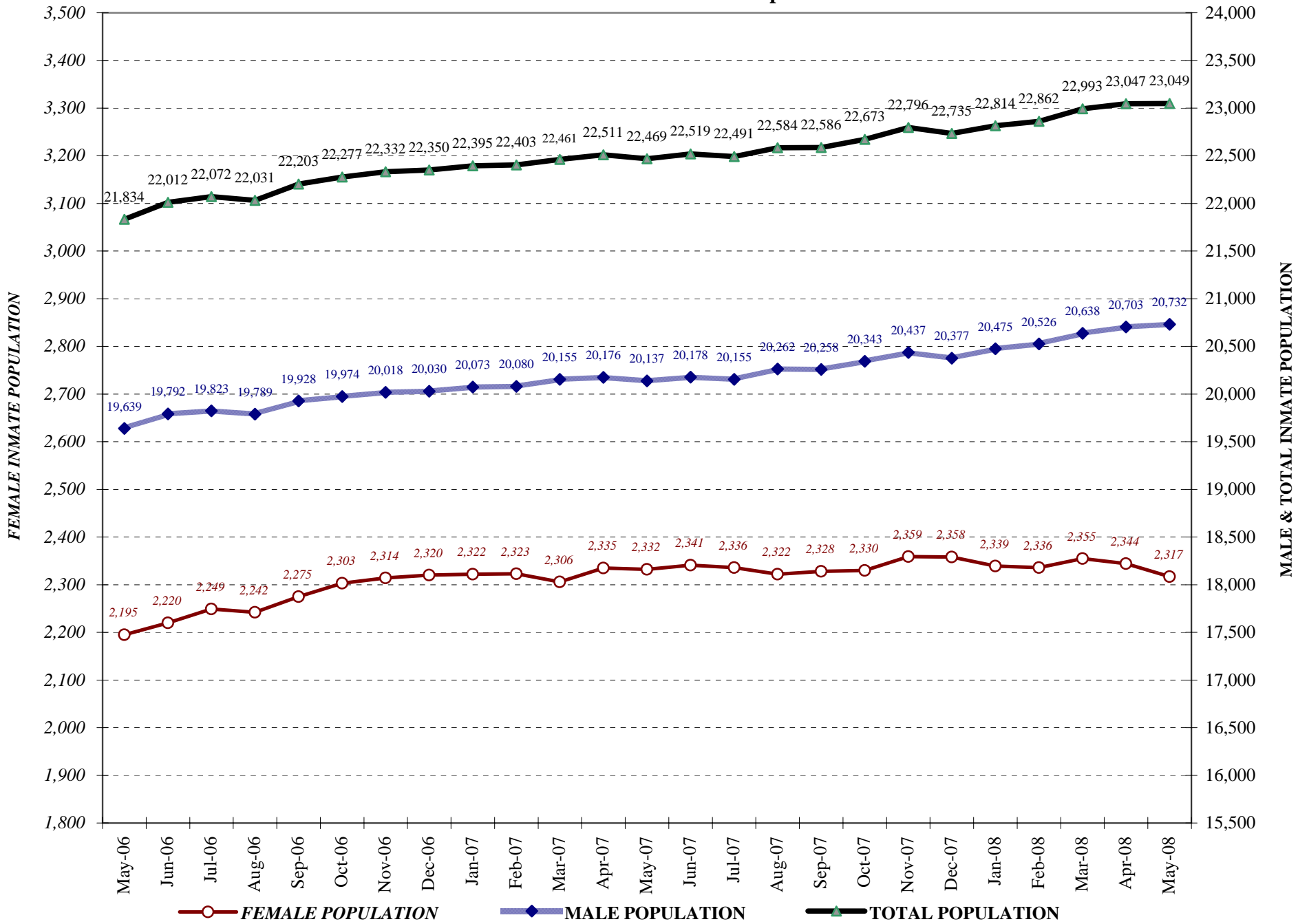
COLORADO DEPARTMENT OF CORRECTIONS

Adult Prison Releases

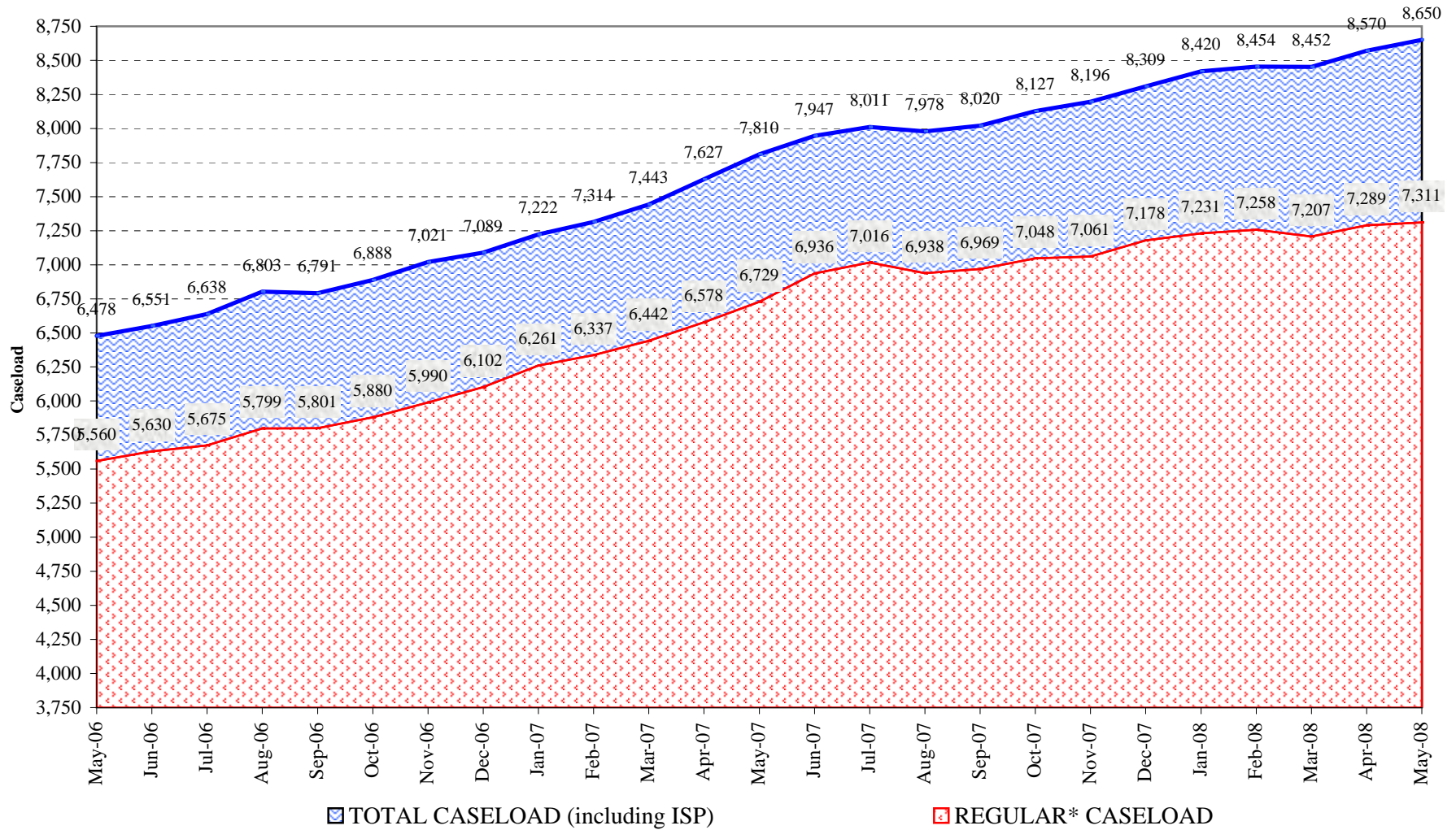


Total releases include releases to discretionary parole, mandatory parole and reparole, all types of discharges and other releases as detailed on the previous page.

COLORADO DEPARTMENT OF CORRECTIONS Adult Jurisdiction Inmate Population



COLORADO DEPARTMENT OF CORRECTIONS Parole Population



* Regular caseload includes interstate parole, but excludes out-of-state parolees and absconders.