

**COLORADO DEPARTMENT OF CORRECTIONS
MONTHLY POPULATION AND CAPACITY REPORT
AS OF APRIL 30, 2008**

6-May-08

	03/31/08	CAPACITY CHANGES	------ 04/30/08 -----		------ 04/30/07 -----	
	OPERATIONAL CAPACITY*		OPERATIONAL CAPACITY*	ON-GRDS POPULATION	OPERATIONAL CAPACITY*	ON-GRDS POPULATION
COLO STATE PENITENTIARY	756		756	742	756	751
CENTENNIAL CORR FAC	336		336	304	336	324
STERLING CORR FAC	2,545		2,545	2,474	2,545	2,499
LIMON CORR FAC	953		953	910	953	947
ARK VALLEY CORR FAC	1,007		1,007	1,003	1,007	1,006
BUENA VISTA CORR FAC	926		926	918	926	913
BUENA VISTA MIN CTR	292		292	270	292	283
COLO TERR CORR FAC	936		936	919	786	786
FORT LYON CORR FAC	500		500	489	500	492
FREMONT CORR FAC	1,660		1,660	1,652	1,471	1,470
LA VISTA CORR FAC	519		519	472	519	515
ARROWHEAD CORR CTR	494		494	492	494	489
FOUR MILE CORR CTR	499		499	471	499	496
TRINIDAD CORR FAC	484		484	479	484	467
S.T.U. at Y.O.S.	30		30	21	30	28
SKYLINE CORR CTR	249		249	246	249	246
COLORADO CORR CTR	150		150	149	150	139
DELTA CORR CTR	484		484	471	484	461
RIFLE CORR CTR	192		192	185	192	184
COLO CORR ALT PROGRAM	100		100	95	100	90
COLO WOMEN'S CORR FAC	224		224	210	224	217
DENVER WOMEN'S CORR FAC	866		866	780	900	831
DENVER REC DIAG CTR	480		480	480	480	494
SAN CARLOS CORR FAC	255		255	249	255	244
SUBTOTAL	14,937	0	14,937	14,481	14,632	14,372
CONTRACTS:						
BENT COUNTY CORR CTR	724		724	636	724	667
HUERFANO COUNTY CORR CTR	774		774	772	774	716
CROWLEY COUNTY CORR FAC	1,720		1,720	1,630	1,720	1,469
KIT CARSON COUNTY CORR FAC	820		820	792	820	775
CHEYENNE MTN REENTRY CTR	592		592	533	500	488
HIGH PLAINS CORR FAC	270		270	244	270	180
NORTH FORK OK CORR FAC	480		480	472	480	480
OFF-GROUNDS POPULATION:						
ESCAPEES/WALKAWAYS				280		242
REVOCATIONS-JAIL				231		234
				0		0
JAIL BACKLOG:						
BACKLOG LESS THAN 72 HOURS			126		115	
BACKLOG GREATER THAN 72 HOURS(FISCAL YTD AVE = 123)			47		46	
BACKLOG-PAROLEES AWAITING TRANSFER			38		62	
TOTAL JAIL BACKLOG				211		223
COUNTY JAIL CONTRACTS				70		83
COMMUNITY CORRECTIONS						
COMMUNITY						
RESIDENTIAL	1,377	-43	1,334	1,334	1,361	1,361
PAROLE REVOCATIONS	2	-1	1	1	1	1
REVOKED-RET TO CUST	252	4	256	256	237	237
NON-RESIDENTIAL	66	8	74	74	48	48
REGRESSIONS	42	12	54	54	29	29
TOTAL COMMUNITY	1,739	-20	1,719	1,719	1,676	1,676
ISP						
RESIDENTIAL	893	23	916	916	859	859
NON-RESIDENTIAL	42	7	49	49	44	44
REGRESSIONS	6	5	11	11	3	3
TOTAL ISP	941	35	976	976	906	906
TOTAL COMM. CORRECTIONS	2,680	15	2,695	2,695	2,582	2,582
MALE POPULATION			20,703		20,176	
FEMALE POPULATION			2,344		2,335	
TOTAL INMATE JURISDICTIONAL POPULATION				23,047		22,511

*OPERATIONAL CAPACITY INCLUDES ALL BEDS AVAILABLE FOR USE, INCLUDING MANAGEMENT CONTROL UNITS, BUT EXCLUDES EMERGENCY DOUBLE BUNKING

COLORADO DEPARTMENT OF CORRECTIONS
MONTHLY POPULATION AND CAPACITY REPORT
AS OF APRIL 30, 2008

6-May-08

CURRENT MONTH CHANGES IN CAPACITY:

NONE

NET MONTHLY GROWTH RATE:

CURRENT MONTH	54
FISCAL YEAR-TO-DATE AVERAGE	53

YOUTHFUL OFFENDER SYSTEM

	----- 04/30/08 -----			04/30/07
	PUEBLO	CONTRACT FACILITIES	COMM. CORR.	TOTAL POPULATION
INTAKE/IDO	10			6
RFP/REMEDATION	11			9
PHASE I	146			152
PHASE II	14			12
PHASE III	2		34	29
OFF GROUNDS/BACKLOG				5
TOTAL Y.O.S. POPULATION	183	0	34	221

	CURRENT MONTH	FISCAL YR. TO DATE
YOS ADMISSIONS	9	50
YOS RELEASES:		
COMPLETION OF SENTENCE	3	26
JUDICIAL RELEASE TO PROB/CT ORD DISCHG	0	3
JUDICIAL TRANSFER TO DOC	0	0
TERMINATION/FAILURE	1	9
DECEASED	0	0
TOTAL RELEASES	4	38

PAROLE CASELOAD

	----- 04/30/08 -----			----- 03/31/08 -----		----- 04/30/07 -----	
	DOMESTIC	INTERST PAR/PROB	TOTAL CASELOAD	DOMESTIC	TOTAL CASELOAD	DOMESTIC	TOTAL CASELOAD
DENVER REGION							
REGULAR	2,615	82	2,697	2,581	2,659	2,369	2,473
ISP	624		624	599	599	495	495
SUBTOTAL	3,239	82	3,321	3,180	3,258	2,864	2,968
NORTHEAST REGION							
REGULAR	1,948	90	2,038	1,924	2,012	1,737	1,785
ISP	275		275	277	277	218	218
SUBTOTAL	2,223	90	2,313	2,201	2,289	1,955	2,003
SOUTHEAST REGION							
REGULAR	1,756	87	1,843	1,729	1,817	1,533	1,618
ISP	272		272	264	264	235	235
SUBTOTAL	2,028	87	2,115	1,993	2,081	1,768	1,853
WESTERN REGION							
REGULAR	668	43	711	677	719	664	702
ISP	110		110	105	105	101	101
SUBTOTAL	778	43	821	782	824	765	803
TOTAL CASELOAD							
REGULAR	6,987	302	7,289	6,911	7,207	6,303	6,578
ISP	1,281		1,281	1,245	1,245	1,049	1,049
TOTAL	8,268	302	8,570	8,156	8,452	7,352	7,627
ADDITIONAL CASELOAD:							
OUT-OF-STATE PAROLEES			1,938		1,925		1,817
PAROLEE ABSCONDERS			819		808		746

**COLORADO DEPARTMENT OF CORRECTIONS
MONTHLY POPULATION AND CAPACITY REPORT
AS OF APRIL 30, 2008**

	04/30/2008 Population			----- FINAL CUSTODY DESIGNATION* -----					
	On-Grds.	Off-Grds	Total	Uncls.	Ad.Seg	Close	Medium	Min.-Res.	Minimum
COLO STATE PENITENTIARY	742	7	749		740	5	3	1	0
CENTENNIAL CORR FAC	304	2	306		5	297	0	2	2
STERLING CORR FAC	2,474	29	2,503		274	732	507	555	435
LIMON CORR FAC	910	14	924		9	654	183	64	14
ARK VALLEY CORR FAC	1,003	16	1,019		4	420	346	181	68
BUENA VISTA CORR FAC	918	15	933		8	337	363	153	72
BUENA VISTA MIN CTR	270	4	274					205	69
COLO TERR CORR FAC	917	13	930		7	218	310	262	133
FORT LYON CORR FAC	489	8	497			34	194	190	79
FREMONT CORR FAC	1,652	14	1,666		12	206	465	569	414
ARROWHEAD CORR CTR	492	3	495				2	306	187
FOUR MILE CORR CTR	471	23	494					337	157
TRINIDAD CORR FAC	479	11	490				1	433	56
S.T.U. at Y.O.S.	21	1	22				10	12	
SKYLINE CORR CTR	246	2	248					2	246
COLORADO CORR CTR	149	2	151						151
DELTA CORR CTR	471	4	475					1	474
RIFLE CORR CTR	185	5	190					4	186
COLO CORR ALT PROGRAM	90	2	92				1	2	89
DENVER REC DIAG CTR	478	16	494	118	9	41	113	159	54
SAN CARLOS CORR FAC	249	4	253		23	114	50	37	29
CONTRACTS:									
BENT COUNTY CORR CTR	636	7	643			9	342	192	100
HUERFANO COUNTY CORR CTR	772	10	782		1	6	410	225	140
CROWLEY COUNTY CORR FAC	1,630	25	1,655		2	2	873	558	220
KIT CARSON COUNTY CORR FAC	792	9	801			7	433	220	141
CHEYENNE MTN REENTRY CTR	533	0	533		2	2	124	264	141
NORTH FORK OK CORR FAC	472	1	473			7	192	175	99
COMMUNITY/ISP	1,784	107	1,891			5	42	95	1,749
Total Classified Male Population	19,629	354	19,983	118	1,096	3,096	4,964	5,204	5,505
Percent of Total				0.6%	5.5%	15.5%	24.8%	26.0%	27.5%
Unclassified Facilities:									
JAIL BACKLOG/REVOCATIONS	190	0	190						
COUNTY JAIL CONTRACTS	70	0	70						
REVOKED TO JAIL	0	0	0						
REVOKED TO COMM CTR	1	0	1						
REVOKED-RET TO CUST FAC	168	48	216						
COMM/ISP REGRESSIONS	0	50	50						
ESCAPEES/WALKAWAYS	40	153	193						
Total Unclassified Facilities	469	251	720						
Total Male Population	20,098	605	20,703						
COLO WOMEN'S CORR FAC	210	0	210			47	25	59	79
DENVER WOMEN'S CORR FAC	780	13	793	2	21	130	129	315	196
LA VISTA CORR FAC	472	11	483		2	35	84	223	139
COLO CORR ALT PROGRAM	5	2	7						7
DENVER REC DIAG CTR INF	2	0	2				1	1	
COLO TERR CORR FAC INF.	2	0	2					1	1
CONTRACTS:									
HIGH PLAINS CORR FAC	244	7	251			2	20	166	63
COMMUNITY/ISP	466	16	482	1		2	6	54	419
Total Classified Female Population	2,181	49	2,230	3	23	216	265	819	904
Percent of Total				0.1%	1.0%	9.7%	11.9%	36.7%	40.5%
Unclassified Facilities:									
JAIL BACKLOG	21	0	21						
COUNTY JAIL CONTRACTS	0	0	0						
REVOKED TO JAIL	0	0	0						
REVOKED TO COMM CTR	0	0	0						
REVOKED-RET TO CUST FAC	35	5	40						
COMM/ISP REGRESSIONS	0	15	15						
ESCAPEES/WALKAWAYS	3	35	38						
Total Unclassified Facilities	59	55	114						
Total Female Population	2,240	104	2,344						

COLORADO DEPARTMENT OF CORRECTIONS
ADULT INMATE JURISDICTIONAL POPULATION (1)

DATE: 5/6/2008

DATE	MALE POPULATION			FEMALE POPULATION			TOTAL POPULATION		
	Male Population	Net Change	Fiscal Y-T-D Average	Female Population	Net Change	Fiscal Y-T-D Average	Total Population	Net Change	Fiscal Y-T-D Average
04-30-08	20,703	65	53	2,344	-11	0	23,047	54	53
03-31-08	20,638	112		2,355	19		22,993	131	
02-29-08	20,526	51		2,336	-3		22,862	48	
01-31-08	20,475	98		2,339	-19		22,814	79	
12-31-07	20,377	-60		2,358	-1		22,735	-61	
11-30-07	20,437	94		2,359	29		22,796	123	
10-31-07	20,343	85		2,330	2		22,673	87	
09-30-07	20,258	-4		2,328	6		22,586	2	
08-31-07	20,262	107		2,322	-14		22,584	93	
07-31-07	20,155	-23		2,336	-5		22,491	-28	
06-30-07	20,178	41		2,341	9		22,519	50	
05-31-07	20,137	-39		2,332	-3		22,469	-42	
04-30-07	20,176	21		2,335	29		22,511	50	
03-31-07	20,155	75		2,306	-17		22,461	58	
02-28-07	20,080	7		2,323	1		22,403	8	
01-31-07	20,073	43		2,322	2		22,395	45	
12-31-06	20,030	12	32	2,320	6	10	22,350	18	42
11-30-06	20,018	44		2,314	11		22,332	55	
10-31-06	19,974	46		2,303	28		22,277	74	
09-30-06	19,928	139		2,275	33		22,203	172	
08-31-06	19,789	-34		2,242	-7		22,031	-41	
07-31-06	19,823	31		2,249	29		22,072	60	
06-30-06	19,792		97	2,220		12	22,012		109
06-30-05	18,631		68	2,073		27	20,704		95
06-30-04	17,814		49	1,755		11	19,569		60
06-30-03	17,226		57	1,620		10	18,846		67
06-30-02	16,539		87	1,506		14	18,045		101
06-30-01	15,493		63	1,340		6	16,833		70
06-30-00	14,733		99	1,266		7	15,999		106
06-30-99	13,547		75	1,179		14	14,726		89
06-30-98	12,647		81	1,016		9	13,663		89
06-30-97	11,681			909			12,590		

(1) Adult inmate jurisdictional population includes on-grounds, off-grounds, out-of-state, escapees, and jail backlog and excludes offenders sentenced to the Youthful Offender System (Y.O.S.).

COLORADO DEPARTMENT OF CORRECTIONS
ADULT INMATE RELEASES FROM PRISON
TOTAL Population (Male and Female)

Date: 5/6/2008

	Parole				Discharge					Other				Total
	Discretionary*	Mandatory*	Mand. Repar.*	Com. Supv.	Sentence	H.B. 1087	Martin/Cooper	Chgs/Det.	Com Spv. Elim	Probation	Ct. Ord. Dsch.	Appeal Bond	Deceased	
Apr-08	512	219	93	0	36	51	5	19	0	15	9	0	4	963
Mar-08	425	182	116	0	27	52	8	22	0	5	10	0	3	850
Feb-08	422	214	82	0	35	49	3	17	0	9	6	1	5	843
Jan-08	531	179	76	0	33	66	10	21	0	6	9	0	4	935
Dec-07	474	157	75	0	35	55	10	17	0	17	7	0	8	855
Nov-07	492	154	53	0	29	56	11	16	0	21	14	0	3	849
Oct-07	514	185	98	0	24	55	11	12	0	12	8	0	2	921
Sep-07	467	153	47	0	39	41	6	9	0	5	13	1	3	784
Aug-07	457	192	114	0	34	54	8	21	0	16	14	0	5	915
Jul-07	423	196	115	0	34	58	6	22	0	7	10	0	4	875
Jun-07	433	188	92	0	19	49	13	11	0	9	8	0	2	824
May-07	499	216	129	0	31	43	7	20	0	14	9	0	4	972
Apr-07	447	197	100	0	26	51	9	16	0	6	10	0	6	868
Mar-07	415	187	140	0	33	64	4	14	0	14	13	1	3	888
Feb-07	405	235	80	0	24	58	12	19	0	15	5	0	0	853
Jan-07	542	192	42	0	37	59	5	15	0	15	16	0	9	932
Dec-06	349	179	59	0	27	44	10	14	0	13	6	1	2	704
Nov-06	422	202	70	0	30	45	12	12	0	16	11	0	6	826
Oct-06	426	186	84	0	36	44	11	10	0	6	7	1	5	816
Sep-06	348	180	65	0	29	44	13	15	0	13	7	0	2	716
Aug-06	430	239	104	0	37	52	10	21	0	17	11	0	2	923
Jul-06	350	174	87	0	43	52	9	20	0	17	6	0	7	765
Jun-06	375	199	89	0	37	43	10	16	0	16	7	0	2	794
May-06	317	235	75	0	34	52	10	15	0	13	9	0	3	763

Definitions of Release Types

Discretionary parole-Released to parole through Parole Board discretion prior to mandatory release or sentence discharge date.

Mandatory parole-Released to parole on mandatory release date.

Mand. Repar-Reparoled on specific date set by Parole Board (includes S.B. 252 reparoles). n/a - breakout not available prior to June 2004.

Com. Supv.-Released to serve 12 months of community supervision.

Sentence discharge-Completion of sentence with no further supervision.

H.B. 1087 discharge-Completion of sentence with no further supervision, subject to earn time provisions of H.B. 95-1087.

Martin/ Cooper discharge-Completion of sentence with no further supervision, sex offender subject to Martin/Cooper Supreme Court decision.

Chgs/ Det. discharge-Completion of sentence, released to other law enforcement for pending charges or detainees.

Com. Spv. Elim discharge-Completion of sentence following reincarceration on community supervision sentence.

Probation-Released by court to probation.

Ct. Ord. Dsch.-Released by court order.

Appeal Bond-Released by court to appeal bond.

Deceased-Offender death in prison.

*Due to the decrease in community transportation services, the Department implemented a procedural change in December 2005 with regards to releasing inmates on weekends. As a result of this change, discretionary releases have increased and mandatory releases have decreased.

COLORADO DEPARTMENT OF CORRECTIONS

ADULT INMATE RELEASES FROM PRISON

Male Population Only

Date: 5/6/2008

	Parole				Discharge					Other				Total
	Discretionary*	Mandatory*	Mand. Repar.*	Com. Supv.	Sentence	H.B. 1087	Martin/Cooper	Chgs/Det.	Com Spv. Elim	Probation	Ct. Ord. Dsch.	Appeal Bond	Deceased	
Apr-08	440	181	82	0	35	45	5	17	0	15	7	0	3	830
Mar-08	367	167	98	0	25	46	8	19	0	5	9	0	2	746
Feb-08	362	189	72	0	34	43	3	16	0	7	4	1	5	736
Jan-08	445	156	64	0	31	59	10	16	0	5	6	0	4	796
Dec-07	401	141	66	0	31	45	10	16	0	16	7	0	8	741
Nov-07	425	133	49	0	25	50	11	14	0	14	13	0	3	737
Oct-07	432	154	84	0	23	48	11	12	0	11	7	0	2	784
Sep-07	413	131	41	0	36	35	6	8	0	4	13	1	3	691
Aug-07	377	170	104	0	29	46	8	20	0	14	10	0	5	783
Jul-07	360	171	94	0	34	52	6	20	0	7	6	0	4	754
Jun-07	366	172	79	0	18	45	12	11	0	8	8	0	2	721
May-07	432	194	110	0	30	37	7	18	0	11	9	0	3	851
Apr-07	382	179	90	0	24	47	8	15	0	4	8	0	6	763
Mar-07	344	166	118	0	28	56	4	14	0	10	13	0	3	756
Feb-07	330	209	71	0	23	51	11	16	0	14	5	0	0	730
Jan-07	453	169	37	0	34	53	5	15	0	14	13	0	7	800
Dec-06	298	160	56	0	24	38	10	14	0	13	6	1	2	622
Nov-06	358	178	62	0	28	42	12	12	0	13	10	0	6	721
Oct-06	373	163	73	0	34	36	11	9	0	6	6	1	5	717
Sep-06	300	148	59	0	29	40	13	12	0	12	7	0	2	622
Aug-06	364	209	89	0	34	44	10	21	0	14	10	0	2	797
Jul-06	310	158	72	0	40	45	9	18	0	15	4	0	7	678
Jun-06	325	180	74	0	32	41	10	13	0	15	6	0	2	698
May-06	269	202	60	0	33	47	10	15	0	12	8	0	3	659

Definitions of Release Types

Discretionary parole-Released to parole through Parole Board discretion prior to mandatory release or sentence discharge date.

Mandatory parole-Released to parole on mandatory release date.

Mand. Repar-Reparoled on specific date set by Parole Board (includes S.B. 252 reparoles). n/a - breakout not available prior to June 2004.

Com. Supv.-Released to serve 12 months of community supervision.

Sentence discharge-Completion of sentence with no further supervision.

H.B. 1087 discharge-Completion of sentence with no further supervision, subject to earn time provisions of H.B. 95-1087.

Martin/ Cooper discharge-Completion of sentence with no further supervision, sex offender subject to Martin/Cooper Supreme Court decision.

Chgs/ Det. discharge-Completion of sentence, released to other law enforcement for pending charges or detainees.

Com. Spv. Elim discharge-Completion of sentence following reincarceration on community supervision sentence.

Probation-Released by court to probation.

Ct. Ord. Dsch.-Released by court order.

Appeal Bond-Released by court to appeal bond.

Deceased-Offender death in prison.

***Due to the decrease in community transportation services, the Department implemented a procedural change in December 2005 with regards to releasing inmates on weekends. As a result of this change, discretionary releases have increased and mandatory releases have decreased.**

COLORADO DEPARTMENT OF CORRECTIONS
ADULT INMATE RELEASES FROM PRISON
Female Population Only

Date: 5/6/2008

	Parole				Discharge					Other				Total
	Discretionary*	Mandatory*	Mand. Repar.*	Com. Supv.	Sentence	H.B. 1087	Martin/Cooper	Chgs/Det.	Com Spv. Elim	Probation	Ct. Ord. Dsch.	Appeal Bond	Deceased	
Apr-08	72	38	11	0	1	6	0	2	0	0	2	0	1	133
Mar-08	58	15	18	0	2	6	0	3	0	0	1	0	1	104
Feb-08	60	25	10	0	1	6	0	1	0	0	2	0	0	107
Jan-08	86	23	12	0	2	7	0	5	0	0	3	0	0	139
Dec-07	73	16	9	0	4	10	0	1	0	0	0	0	0	114
Nov-07	67	21	4	0	4	6	0	2	0	0	1	0	0	112
Oct-07	82	31	14	0	1	7	0	0	0	0	1	0	0	137
Sep-07	54	22	6	0	3	6	0	1	0	0	0	0	0	93
Aug-07	80	22	10	0	5	8	0	1	0	0	4	0	0	132
Jul-07	63	25	21	0	0	6	0	2	0	0	4	0	0	121
Jun-07	67	16	13	0	1	4	1	0	0	0	0	0	0	103
May-07	67	22	19	0	1	6	0	2	0	0	0	0	1	121
Apr-07	65	18	10	0	2	4	1	1	0	0	2	0	0	105
Mar-07	71	21	22	0	5	8	0	0	0	0	0	1	0	132
Feb-07	75	26	9	0	1	7	1	3	0	0	0	0	0	123
Jan-07	89	23	5	0	3	6	0	0	0	0	3	0	2	132
Dec-06	51	19	3	0	3	6	0	0	0	0	0	0	0	82
Nov-06	64	24	8	0	2	3	0	0	0	0	1	0	0	105
Oct-06	53	23	11	0	2	8	0	1	0	0	1	0	0	99
Sep-06	48	32	6	0	0	4	0	3	0	0	0	0	0	94
Aug-06	66	30	15	0	3	8	0	0	0	0	1	0	0	126
Jul-06	40	16	15	0	3	7	0	2	0	0	2	0	0	87
Jun-06	50	19	15	0	5	2	0	3	0	0	1	0	0	96
May-06	48	33	15	0	1	5	0	0	0	0	1	0	0	104

Definitions of Release Types

Discretionary parole-Released to parole through Parole Board discretion prior to mandatory release or sentence discharge date.

Mandatory parole-Released to parole on mandatory release date.

Mand. Repar-Reparoled on specific date set by Parole Board (includes S.B. 252 reparoles). n/a - breakout not available prior to June 2004.

Com. Supv.-Released to serve 12 months of community supervision.

Sentence discharge-Completion of sentence with no further supervision.

H.B. 1087 discharge-Completion of sentence with no further supervision, subject to earn time provisions of H.B. 95-1087.

Martin/ Cooper discharge-Completion of sentence with no further supervision, sex offender subject to Martin/Cooper Supreme Court decision.

Chgs/ Det. discharge-Completion of sentence, released to other law enforcement for pending charges or detainees.

Com. Spv. Elim discharge-Completion of sentence following reincarceration on community supervision sentence.

Probation-Released by court to probation.

Ct. Ord. Dsch.-Released by court order.

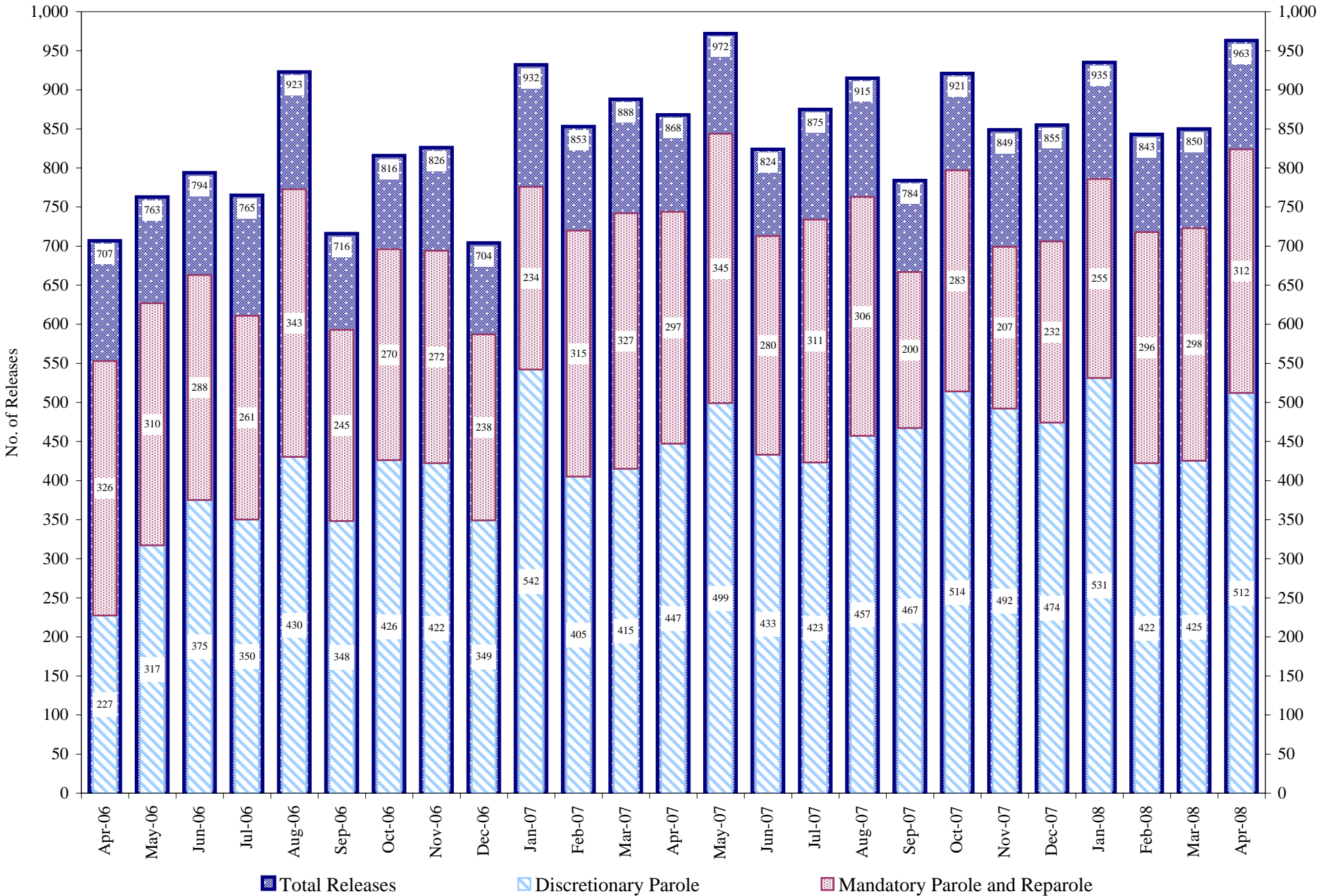
Appeal Bond-Released by court to appeal bond.

Deceased-Offender death in prison.

***Due to the decrease in community transportation services, the Department implemented a procedural change in December 2005 with regards to releasing inmates on weekends. As a result of this change, discretionary releases have increased and mandatory releases have decreased.**

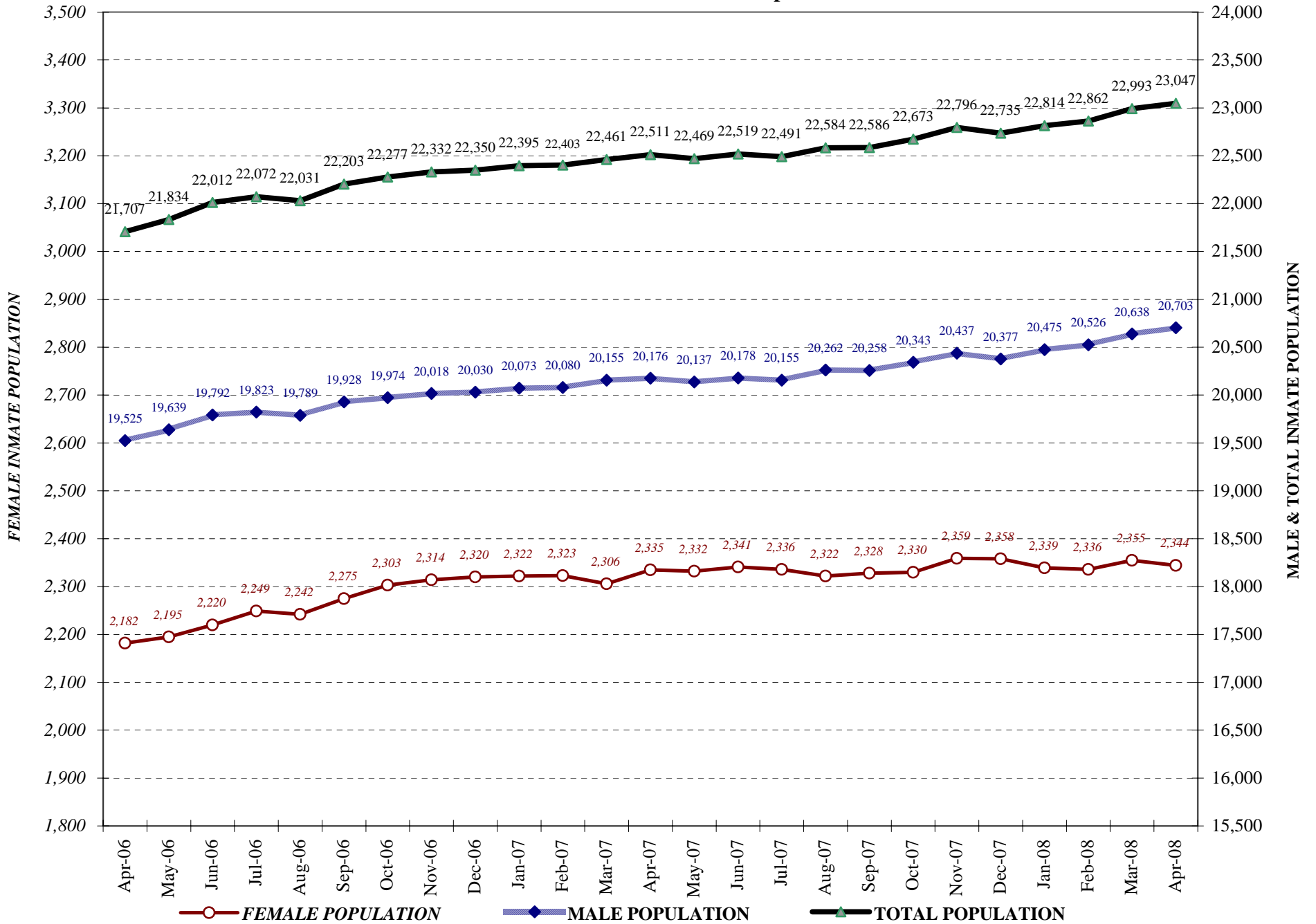
COLORADO DEPARTMENT OF CORRECTIONS

Adult Prison Releases

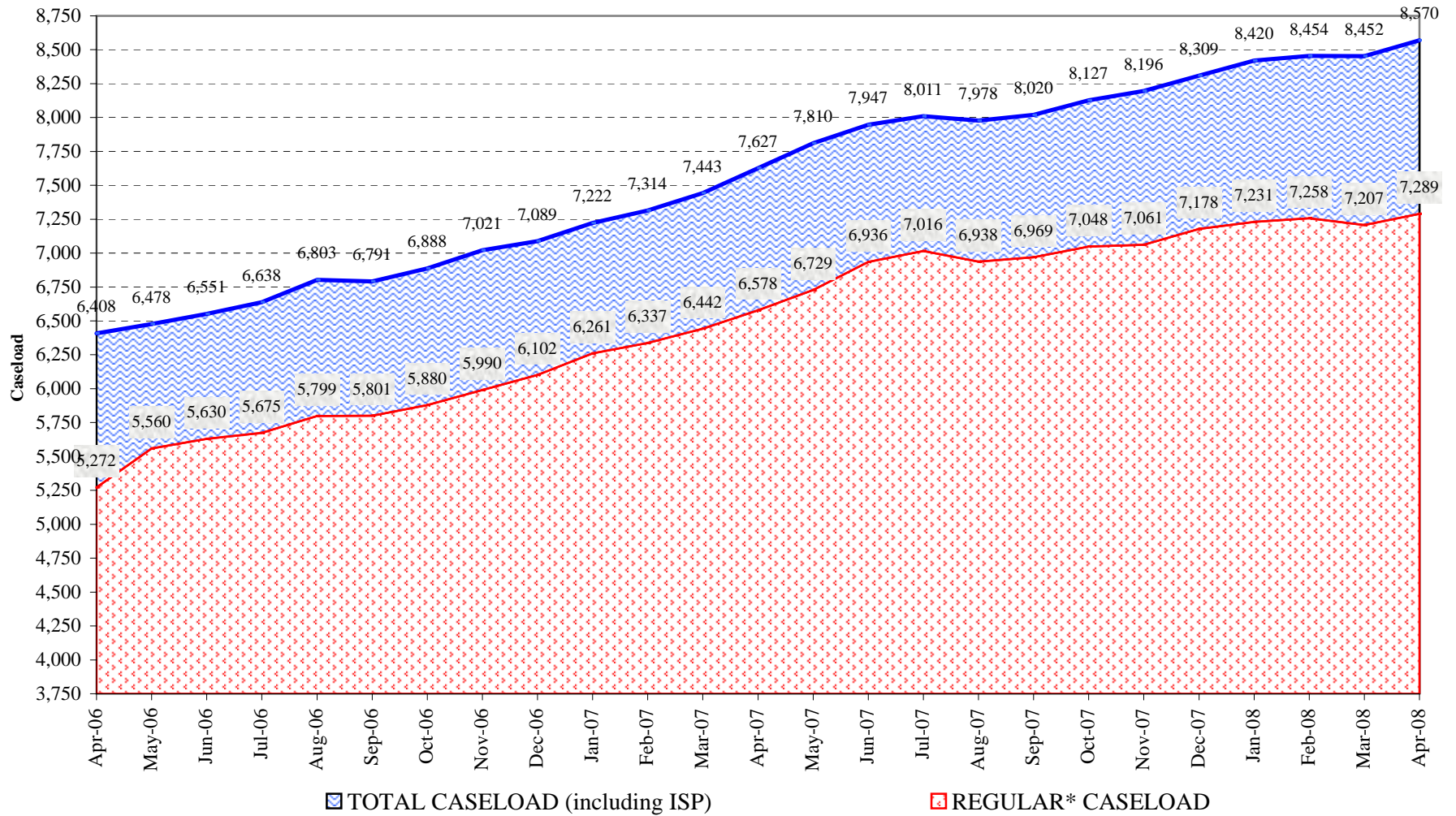


Total releases include releases to discretionary parole, mandatory parole and reparable, all types of discharges and other releases as detailed on the previous page.

COLORADO DEPARTMENT OF CORRECTIONS Adult Jurisdiction Inmate Population



COLORADO DEPARTMENT OF CORRECTIONS Parole Population



* Regular caseload includes interstate parole, but excludes out-of-state parolees and absconders.