

**COLORADO DEPARTMENT OF CORRECTIONS
MONTHLY POPULATION AND CAPACITY REPORT
AS OF MARCH 31, 2008**

8-Apr-08

	02/29/08	CAPACITY CHANGES	----- 03/31/08 -----		----- 03/31/07 -----	
	OPERATIONAL CAPACITY*		OPERATIONAL CAPACITY*	ON-GRDS POPULATION	OPERATIONAL CAPACITY*	ON-GRDS POPULATION
COLO STATE PENITENTIARY	756		756	746	756	753
CENTENNIAL CORR FAC	336		336	284	336	329
STERLING CORR FAC	2,545		2,545	2,468	2,545	2,539
LIMON CORR FAC	953		953	901	953	954
ARK VALLEY CORR FAC	1,007		1,007	1,003	1,007	1,002
BUENA VISTA CORR FAC	926		926	905	926	850
BUENA VISTA MIN CTR	292		292	288	292	276
COLO TERR CORR FAC	936		936	918	786	770
FORT LYON CORR FAC	500		500	485	500	484
FREMONT CORR FAC	1,660		1,660	1,644	1,471	1,467
LA VISTA CORR FAC	519		519	453	472	476
ARROWHEAD CORR CTR	494		494	489	494	489
FOUR MILE CORR CTR	499		499	495	499	495
TRINIDAD CORR FAC	484		484	473	484	476
S.T.U. at Y.O.S.	30		30	28	30	17
SKYLINE CORR CTR	249		249	247	249	248
COLORADO CORR CTR	150		150	150	150	141
DELTA CORR CTR	484		484	464	484	462
RIFLE CORR CTR	192		192	189	192	187
COLO CORR ALT PROGRAM	100		100	103	100	84
COLO WOMEN'S CORR FAC	224		224	210	224	216
DENVER WOMEN'S CORR FAC	866		866	808	900	814
DENVER REC DIAG CTR	480		480	486	480	472
SAN CARLOS CORR FAC	255		255	245	255	248
SUBTOTAL	14,937	0	14,937	14,482	14,585	14,249
CONTRACTS:						
BENT COUNTY CORR CTR	724		724	651	724	669
HUERFANO COUNTY CORR CTR	774		774	767	774	714
CROWLEY COUNTY CORR FAC	1,720		1,720	1,602	1,720	1,478
KIT CARSON COUNTY CORR FAC	820		820	745	820	728
CHEYENNE MTN REENTRY CTR	592		592	563	500	503
HIGH PLAINS CORR FAC	270		270	249	270	219
NORTH FORK OK CORR FAC	480		480	480	480	479
OFF-GROUNDS POPULATION:				242		217
ESCAPEES/WALKAWAYS				244		230
REVOCATIONS-JAIL				0		1
JAIL BACKLOG:						
BACKLOG LESS THAN 72 HOURS			126		139	
BACKLOG GREATER THAN 72 HOURS (FISCAL YTD AVE = 118)			61		95	
BACKLOG-PAROLEES AWAITING TRANSFER			43		75	
TOTAL JAIL BACKLOG				230		309
COUNTY JAIL CONTRACTS				58		68
COMMUNITY CORRECTIONS						
COMMUNITY						
RESIDENTIAL	1,378	-1	1,377	1,377	1,362	1,362
PAROLE REVOCATIONS	1	1	2	2	0	0
REVOKED-RET TO CUST	264	-12	252	252	230	230
NON-RESIDENTIAL	93	-27	66	66	41	41
REGRESSIONS	51	-9	42	42	47	47
TOTAL COMMUNITY	1,787	-48	1,739	1,739	1,680	1,680
ISP						
RESIDENTIAL	881	12	893	893	870	870
NON-RESIDENTIAL	46	-4	42	42	38	38
REGRESSIONS	16	-10	6	6	9	9
TOTAL ISP	943	-2	941	941	917	917
TOTAL COMM. CORRECTIONS	2,730	-50	2,680	2,680	2,597	2,597
MALE POPULATION			20,638		20,155	
FEMALE POPULATION			2,355		2,306	
TOTAL INMATE JURISDICTIONAL POPULATION				22,993		22,461

*OPERATIONAL CAPACITY INCLUDES ALL BEDS AVAILABLE FOR USE, INCLUDING MANAGEMENT CONTROL UNITS, BUT EXCLUDES EMERGENCY DOUBLE BUNKING

**COLORADO DEPARTMENT OF CORRECTIONS
MONTHLY POPULATION AND CAPACITY REPORT
AS OF MARCH 31, 2008**

8-Apr-08

CURRENT MONTH CHANGES IN CAPACITY:

NONE

NET MONTHLY GROWTH RATE:

CURRENT MONTH	131
FISCAL YEAR-TO-DATE AVERAGE	53

YOUTHFUL OFFENDER SYSTEM

	----- 03/31/08 -----			03/31/07
	PUEBLO	CONTRACT FACILITIES	COMM. CORR.	TOTAL POPULATION
INTAKE/IDO	9			8
RFP/REMEDICATION	11			9
PHASE I	137			154
PHASE II	18			10
PHASE III			38	25
OFF GROUNDS/BACKLOG				3
TOTAL Y.O.S. POPULATION	175	0	38	211

	CURRENT MONTH	FISCAL YR. TO DATE
YOS ADMISSIONS	3	41
YOS RELEASES:		
COMPLETION OF SENTENCE	4	23
JUDICIAL RELEASE TO PROB/CT ORD DISCHG	0	3
JUDICIAL TRANSFER TO DOC	0	0
TERMINATION/FAILURE	1	8
DECEASED	0	0
TOTAL RELEASES	5	34

PAROLE CASELOAD

	----- 03/31/08 -----			----- 02/29/08 -----		----- 03/31/07 -----	
	DOMESTIC	INTERST PAR/PROB	TOTAL CASELOAD	DOMESTIC	TOTAL CASELOAD	DOMESTIC	TOTAL CASELOAD
DENVER REGION							
REGULAR	2,581	78	2,659	2,591	2,674	2,347	2,447
ISP	599		599	566	566	467	467
SUBTOTAL	3,180	78	3,258	3,157	3,240	2,814	2,914
NORTHEAST REGION							
REGULAR	1,924	88	2,012	1,931	2,019	1,692	1,741
ISP	277		277	280	280	212	212
SUBTOTAL	2,201	88	2,289	2,211	2,299	1,904	1,953
SOUTHEAST REGION							
REGULAR	1,729	88	1,817	1,758	1,847	1,495	1,581
ISP	264		264	249	249	210	210
SUBTOTAL	1,993	88	2,081	2,007	2,096	1,705	1,791
WESTERN REGION							
REGULAR	677	42	719	675	718	635	673
ISP	105		105	101	101	112	112
SUBTOTAL	782	42	824	776	819	747	785
TOTAL CASELOAD							
REGULAR	6,911	296	7,207	6,955	7,258	6,169	6,442
ISP	1,245		1,245	1,196	1,196	1,001	1,001
TOTAL	8,156	296	8,452	8,151	8,454	7,170	7,443
ADDITIONAL CASELOAD:							
OUT-OF-STATE PAROLEES			1,925		1,913		1,799
PAROLEE ABSCONDERS			808		815		754

**COLORADO DEPARTMENT OF CORRECTIONS
MONTHLY POPULATION AND CAPACITY REPORT
AS OF MARCH 31, 2008**

		03/31/2008 Population			----- FINAL CUSTODY DESIGNATION* -----					
		On-Grds.	Off-Grds	Total	Uncls.	Ad.Seg	Close	Medium	Min.-Res.	Minimum
Male Population	COLO STATE PENITENTIARY	746	5	751		707	34	5	1	4
	CENTENNIAL CORR FAC	284	1	285		2	277	4	1	1
	STERLING CORR FAC	2,468	24	2,492		268	748	482	564	430
	LIMON CORR FAC	901	11	912		7	659	174	56	16
	ARK VALLEY CORR FAC	1,003	14	1,017		3	421	349	170	74
	BUENA VISTA CORR FAC	905	25	930		13	337	367	145	68
	BUENA VISTA MIN CTR	288	3	291		0	0	1	224	66
	COLO TERR CORR FAC	917	11	928		7	211	335	264	111
	FORT LYON CORR FAC	485	7	492		1	33	189	193	76
	FREMONT CORR FAC	1,644	21	1,665		16	220	463	558	408
	ARROWHEAD CORR CTR	489	3	492				1	309	182
	FOUR MILE CORR CTR	495	2	497					346	151
	TRINIDAD CORR FAC	473	8	481		2			432	47
	S.T.U. at Y.O.S.	28	1	29				4	25	0
	SKYLINE CORR CTR	247	2	249					1	248
	COLORADO CORR CTR	150	0	150					1	149
	DELTA CORR CTR	464	6	470			1		1	468
	RIFLE CORR CTR	189	2	191					1	190
	COLO CORR ALT PROGRAM	95	4	99				2	5	92
	DENVER REC DIAG CTR	485	12	497	147	8	39	119	121	63
	SAN CARLOS CORR FAC	245	4	249		23	113	48	39	26
	CONTRACTS:									
	BENT COUNTY CORR CTR	651	9	660		0	10	379	178	93
	HUERFANO COUNTY CORR CTR	767	10	777		3	7	393	242	132
	CROWLEY COUNTY CORR FAC	1,602	20	1,622		4	1	839	549	229
	KIT CARSON COUNTY CORR FAC	745	10	755		1	7	396	229	122
	CHEYENNE MTN REENTRY CTR	563	0	563		0	0	136	267	160
	NORTH FORK OK CORR FAC	480	0	480		1	4	198	183	94
	COMMUNITY/ISP	1,786	92	1,878			6	40	91	1,741
	Total Classified Male Population	19,595	307	19,902	147	1,066	3,128	4,924	5,196	5,441
Percent of Total				0.7%	5.4%	15.7%	24.7%	26.1%	27.3%	
Unclassified Facilities:										
JAIL BACKLOG/REVOCATIONS	217	0	217							
COUNTY JAIL CONTRACTS	58	0	58							
REVOKED TO JAIL	0	0	0							
REVOKED TO COMM CTR	2	0	2							
REVOKED-RET TO CUST FAC	172	44	216							
COMM/ISP REGRESSIONS	0	38	38							
ESCAPEES/WALKAWAYS	49	156	205							
Total Unclassified Facilities	498	238	736							
Total Male Population	20,093	545	20,638							
Female Population	COLO WOMEN'S CORR FAC	210	0	210			45	29	55	81
	DENVER WOMEN'S CORR FAC	808	15	823	17	20	125	138	321	202
	LA VISTA CORR FAC	453	7	460			38	80	222	120
	COLO CORR ALT PROGRAM	8	0	8						8
	DENVER REC DIAG CTR INF	1	0	1						1
	COLO TERR CORR FAC INF.	1	1	2			1			1
	CONTRACTS:									
	HIGH PLAINS CORR FAC	249	4	253			2	33	135	83
	COMMUNITY/ISP	484	16	500	1		1	7	55	436
	Total Classified Female Population	2,214	43	2,257	18	20	212	287	788	932
	Percent of Total				0.8%	0.9%	9.4%	12.7%	34.9%	41.3%
	Unclassified Facilities:									
	JAIL BACKLOG	13	0	13						
COUNTY JAIL CONTRACTS	0	0	0							
REVOKED TO JAIL	0	0	0							
REVOKED TO COMM CTR	0	0	0							
REVOKED-RET TO CUST FAC	31	5	36							
COMM/ISP REGRESSIONS	0	10	10							
ESCAPEES/WALKAWAYS	3	36	39							
Total Unclassified Facilities	47	51	98							
Total Female Population	2,261	94	2,355							

COLORADO DEPARTMENT OF CORRECTIONS
ADULT INMATE JURISDICTIONAL POPULATION (1)

DATE: 4/8/2008

DATE	MALE POPULATION			FEMALE POPULATION			TOTAL POPULATION		
	Male Population	Net Change	Fiscal Y-T-D Average	Female Population	Net Change	Fiscal Y-T-D Average	Total Population	Net Change	Fiscal Y-T-D Average
03-31-08	20,638	112	51	2,355	19	2	22,993	131	53
02-29-08	20,526	51		2,336	-3		22,862	48	
01-31-08	20,475	98		2,339	-19		22,814	79	
12-31-07	20,377	-60		2,358	-1		22,735	-61	
11-30-07	20,437	94		2,359	29		22,796	123	
10-31-07	20,343	85		2,330	2		22,673	87	
09-30-07	20,258	-4		2,328	6		22,586	2	
08-31-07	20,262	107		2,322	-14		22,584	93	
07-31-07	20,155	-23		2,336	-5		22,491	-28	
06-30-07	20,178	41		2,341	9		22,519	50	
05-31-07	20,137	-39		2,332	-3		22,469	-42	
04-30-07	20,176	21		2,335	29		22,511	50	
03-31-07	20,155	75		2,306	-17		22,461	58	
02-28-07	20,080	7		2,323	1		22,403	8	
01-31-07	20,073	43		2,322	2		22,395	45	
12-31-06	20,030	12	32	2,320	6	10	22,350	18	42
11-30-06	20,018	44		2,314	11		22,332	55	
10-31-06	19,974	46		2,303	28		22,277	74	
09-30-06	19,928	139		2,275	33		22,203	172	
08-31-06	19,789	-34		2,242	-7		22,031	-41	
07-31-06	19,823	31		2,249	29		22,072	60	
06-30-06	19,792		97	2,220		12	22,012		109
06-30-05	18,631		68	2,073		27	20,704		95
06-30-04	17,814		49	1,755		11	19,569		60
06-30-03	17,226		57	1,620		10	18,846		67
06-30-02	16,539		87	1,506		14	18,045		101
06-30-01	15,493		63	1,340		6	16,833		70
06-30-00	14,733		99	1,266		7	15,999		106
06-30-99	13,547		75	1,179		14	14,726		89
06-30-98	12,647		81	1,016		9	13,663		89
06-30-97	11,681			909			12,590		

(1) Adult inmate jurisdictional population includes on-grounds, off-grounds, out-of-state, escapees, and jail backlog and excludes offenders sentenced to the Youthful Offender System (Y.O.S.).

COLORADO DEPARTMENT OF CORRECTIONS
ADULT INMATE RELEASES FROM PRISON
TOTAL Population (Male and Female)

Date: 4/8/2008

	Parole				Discharge					Other				Total
	Discretionary*	Mandatory*	Mand. Repar.*	Com. Supv.	Sentence	H.B. 1087	Martin/Cooper	Chgs/Det.	Com Spv. Elim	Probation	Ct. Ord. Dsch.	Appeal Bond	Deceased	
Mar-08	425	182	116	0	27	52	8	22	0	5	10	0	3	850
Feb-08	422	214	82	0	35	49	3	17	0	9	6	1	5	843
Jan-08	531	179	76	0	33	66	10	21	0	6	9	0	4	935
Dec-07	474	157	75	0	35	55	10	17	0	17	7	0	8	855
Nov-07	492	154	53	0	29	56	11	16	0	21	14	0	3	849
Oct-07	514	185	98	0	24	55	11	12	0	12	8	0	2	921
Sep-07	467	153	47	0	39	41	6	9	0	5	13	1	3	784
Aug-07	457	192	114	0	34	54	8	21	0	16	14	0	5	915
Jul-07	423	196	115	0	34	58	6	22	0	7	10	0	4	875
Jun-07	433	188	92	0	19	49	13	11	0	9	8	0	2	824
May-07	499	216	129	0	31	43	7	20	0	14	9	0	4	972
Apr-07	447	197	100	0	26	51	9	16	0	6	10	0	6	868
Mar-07	415	187	140	0	33	64	4	14	0	14	13	1	3	888
Feb-07	405	235	80	0	24	58	12	19	0	15	5	0	0	853
Jan-07	542	192	42	0	37	59	5	15	0	15	16	0	9	932
Dec-06	349	179	59	0	27	44	10	14	0	13	6	1	2	704
Nov-06	422	202	70	0	30	45	12	12	0	16	11	0	6	826
Oct-06	426	186	84	0	36	44	11	10	0	6	7	1	5	816
Sep-06	348	180	65	0	29	44	13	15	0	13	7	0	2	716
Aug-06	430	239	104	0	37	52	10	21	0	17	11	0	2	923
Jul-06	350	174	87	0	43	52	9	20	0	17	6	0	7	765
Jun-06	375	199	89	0	37	43	10	16	0	16	7	0	2	794
May-06	317	235	75	0	34	52	10	15	0	13	9	0	3	763
Apr-06	227	235	91	0	41	54	17	17	0	10	7	0	8	707

Definitions of Release Types

Discretionary parole-Released to parole through Parole Board discretion prior to mandatory release or sentence discharge date.

Mandatory parole-Released to parole on mandatory release date.

Mand. Repar-Reparoled on specific date set by Parole Board (includes S.B. 252 reparoles). n/a - breakout not available prior to June 2004.

Com. Supv.-Released to serve 12 months of community supervision.

Sentence discharge-Completion of sentence with no further supervision.

H.B. 1087 discharge-Completion of sentence with no further supervision, subject to earn time provisions of H.B. 95-1087.

Martin/ Cooper discharge-Completion of sentence with no further supervision, sex offender subject to Martin/Cooper Supreme Court decision.

Chgs/ Det. discharge-Completion of sentence, released to other law enforcement for pending charges or detainees.

Com. Spv. Elim discharge-Completion of sentence following reincarceration on community supervision sentence.

Probation-Released by court to probation.

Ct. Ord. Dsch.-Released by court order.

Appeal Bond-Released by court to appeal bond.

Deceased-Offender death in prison.

***Due to the decrease in community transportation services, the Department implemented a procedural change in December 2005 with regards to releasing inmates on weekends. As a result of this change, discretionary releases have increased and mandatory releases have decreased.**

COLORADO DEPARTMENT OF CORRECTIONS

ADULT INMATE RELEASES FROM PRISON

Male Population Only

Date: 4/8/2008

	Parole				Discharge					Other				Total
	Discretionary*	Mandatory*	Mand. Repar.*	Com. Supv.	Sentence	H.B. 1087	Martin/Cooper	Chgs/Det.	Com Spv. Elim	Probation	Ct. Ord. Dsch.	Appeal Bond	Deceased	
Mar-08	367	167	98	0	25	46	8	19	0	5	9	0	2	746
Feb-08	362	189	72	0	34	43	3	16	0	7	4	1	5	736
Jan-08	445	156	64	0	31	59	10	16	0	5	6	0	4	796
Dec-07	401	141	66	0	31	45	10	16	0	16	7	0	8	741
Nov-07	425	133	49	0	25	50	11	14	0	14	13	0	3	737
Oct-07	432	154	84	0	23	48	11	12	0	11	7	0	2	784
Sep-07	413	131	41	0	36	35	6	8	0	4	13	1	3	691
Aug-07	377	170	104	0	29	46	8	20	0	14	10	0	5	783
Jul-07	360	171	94	0	34	52	6	20	0	7	6	0	4	754
Jun-07	366	172	79	0	18	45	12	11	0	8	8	0	2	721
May-07	432	194	110	0	30	37	7	18	0	11	9	0	3	851
Apr-07	382	179	90	0	24	47	8	15	0	4	8	0	6	763
Mar-07	344	166	118	0	28	56	4	14	0	10	13	0	3	756
Feb-07	330	209	71	0	23	51	11	16	0	14	5	0	0	730
Jan-07	453	169	37	0	34	53	5	15	0	14	13	0	7	800
Dec-06	298	160	56	0	24	38	10	14	0	13	6	1	2	622
Nov-06	358	178	62	0	28	42	12	12	0	13	10	0	6	721
Oct-06	373	163	73	0	34	36	11	9	0	6	6	1	5	717
Sep-06	300	148	59	0	29	40	13	12	0	12	7	0	2	622
Aug-06	364	209	89	0	34	44	10	21	0	14	10	0	2	797
Jul-06	310	158	72	0	40	45	9	18	0	15	4	0	7	678
Jun-06	325	180	74	0	32	41	10	13	0	15	6	0	2	698
May-06	269	202	60	0	33	47	10	15	0	12	8	0	3	659
Apr-06	178	213	79	0	35	47	17	16	0	9	6	0	8	608

Definitions of Release Types

Discretionary parole-Released to parole through Parole Board discretion prior to mandatory release or sentence discharge date.

Mandatory parole-Released to parole on mandatory release date.

Mand. Repar-Reparoled on specific date set by Parole Board (includes S.B. 252 reparoles). n/a - breakout not available prior to June 2004.

Com. Supv.-Released to serve 12 months of community supervision.

Sentence discharge-Completion of sentence with no further supervision.

H.B. 1087 discharge-Completion of sentence with no further supervision, subject to earn time provisions of H.B. 95-1087.

Martin/ Cooper discharge-Completion of sentence with no further supervision, sex offender subject to Martin/Cooper Supreme Court decision.

Chgs/ Det. discharge-Completion of sentence, released to other law enforcement for pending charges or detainees.

Com. Spv. Elim discharge-Completion of sentence following reincarceration on community supervision sentence.

Probation-Released by court to probation.

Ct. Ord. Dsch.-Released by court order.

Appeal Bond-Released by court to appeal bond.

Deceased-Offender death in prison.

***Due to the decrease in community transportation services, the Department implemented a procedural change in December 2005 with regards to releasing inmates on weekends. As a result of this change, discretionary releases have increased and mandatory releases have decreased.**

COLORADO DEPARTMENT OF CORRECTIONS
ADULT INMATE RELEASES FROM PRISON
Female Population Only

Date: 4/8/2008

	Parole				Discharge					Other				Total
	Discretionary*	Mandatory*	Mand. Repar.*	Com. Supv.	Sentence	H.B. 1087	Martin/Cooper	Chgs/Det.	Com Spv. Elim	Probation	Ct. Ord. Dsch.	Appeal Bond	Deceased	
Mar-08	58	15	18	0	2	6	0	3	0	0	1	0	1	104
Feb-08	60	25	10	0	1	6	0	1	0	2	2	0	0	107
Jan-08	86	23	12	0	2	7	0	5	0	1	3	0	0	139
Dec-07	73	16	9	0	4	10	0	1	0	1	0	0	0	114
Nov-07	67	21	4	0	4	6	0	2	0	7	1	0	0	112
Oct-07	82	31	14	0	1	7	0	0	0	1	1	0	0	137
Sep-07	54	22	6	0	3	6	0	1	0	1	0	0	0	93
Aug-07	80	22	10	0	5	8	0	1	0	2	4	0	0	132
Jul-07	63	25	21	0	0	6	0	2	0	0	4	0	0	121
Jun-07	67	16	13	0	1	4	1	0	0	1	0	0	0	103
May-07	67	22	19	0	1	6	0	2	0	3	0	0	1	121
Apr-07	65	18	10	0	2	4	1	1	0	2	2	0	0	105
Mar-07	71	21	22	0	5	8	0	0	0	4	0	1	0	132
Feb-07	75	26	9	0	1	7	1	3	0	1	0	0	0	123
Jan-07	89	23	5	0	3	6	0	0	0	1	3	0	2	132
Dec-06	51	19	3	0	3	6	0	0	0	0	0	0	0	82
Nov-06	64	24	8	0	2	3	0	0	0	3	1	0	0	105
Oct-06	53	23	11	0	2	8	0	1	0	0	1	0	0	99
Sep-06	48	32	6	0	0	4	0	3	0	1	0	0	0	94
Aug-06	66	30	15	0	3	8	0	0	0	3	1	0	0	126
Jul-06	40	16	15	0	3	7	0	2	0	2	2	0	0	87
Jun-06	50	19	15	0	5	2	0	3	0	1	1	0	0	96
May-06	48	33	15	0	1	5	0	0	0	1	1	0	0	104
Apr-06	49	22	12	0	6	7	0	1	0	1	1	0	0	99

Definitions of Release Types

Discretionary parole-Released to parole through Parole Board discretion prior to mandatory release or sentence discharge date.

Mandatory parole-Released to parole on mandatory release date.

Mand. Repar-Reparoled on specific date set by Parole Board (includes S.B. 252 reparoles). n/a - breakout not available prior to June 2004.

Com. Supv.-Released to serve 12 months of community supervision.

Sentence discharge-Completion of sentence with no further supervision.

H.B. 1087 discharge-Completion of sentence with no further supervision, subject to earn time provisions of H.B. 95-1087.

Martin/ Cooper discharge-Completion of sentence with no further supervision, sex offender subject to Martin/Cooper Supreme Court decision.

Chgs/ Det. discharge-Completion of sentence, released to other law enforcement for pending charges or detainees.

Com. Spv. Elim discharge-Completion of sentence following reincarceration on community supervision sentence.

Probation-Released by court to probation.

Ct. Ord. Dsch.-Released by court order.

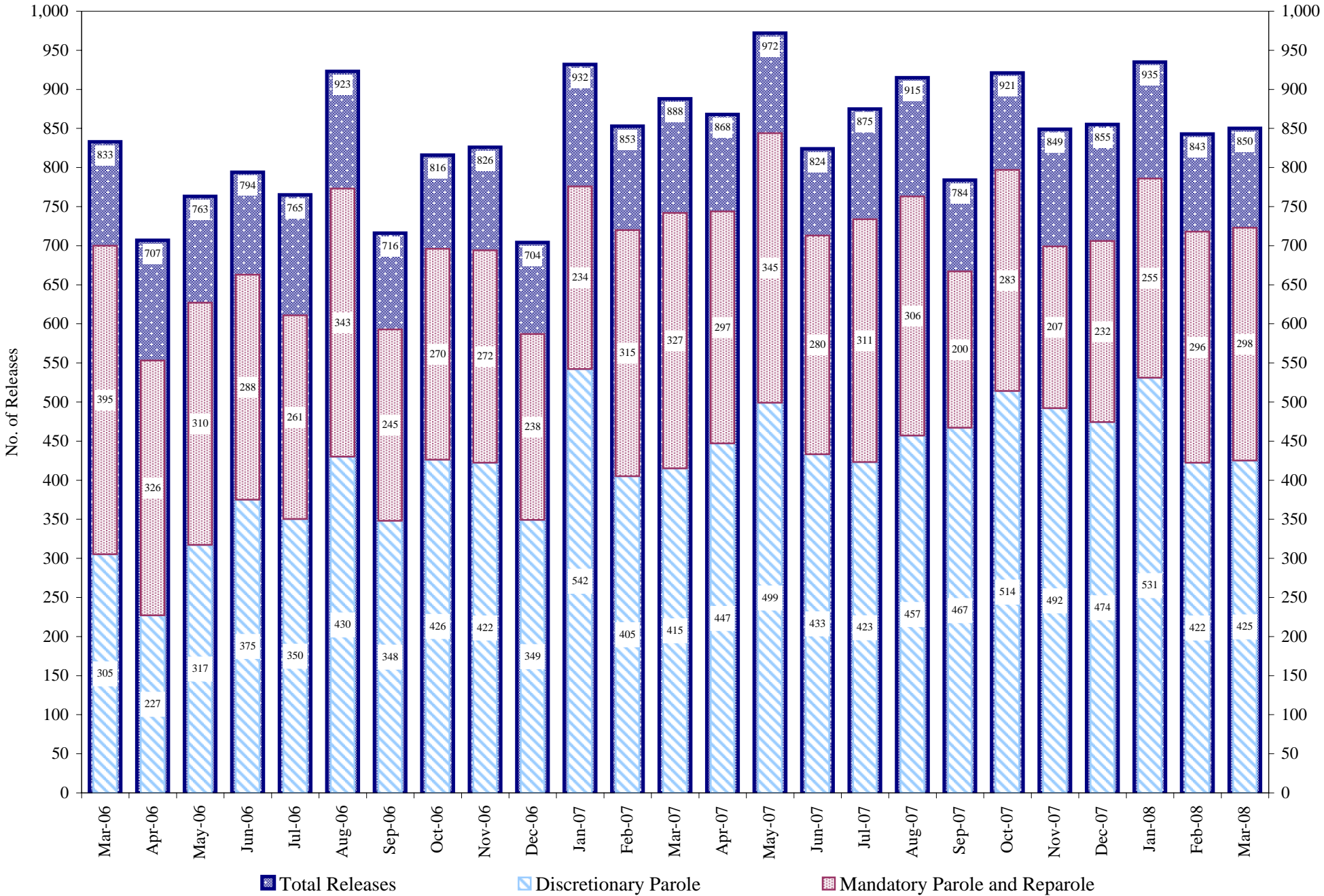
Appeal Bond-Released by court to appeal bond.

Deceased-Offender death in prison.

***Due to the decrease in community transportation services, the Department implemented a procedural change in December 2005 with regards to releasing inmates on weekends. As a result of this change, discretionary releases have increased and mandatory releases have decreased.**

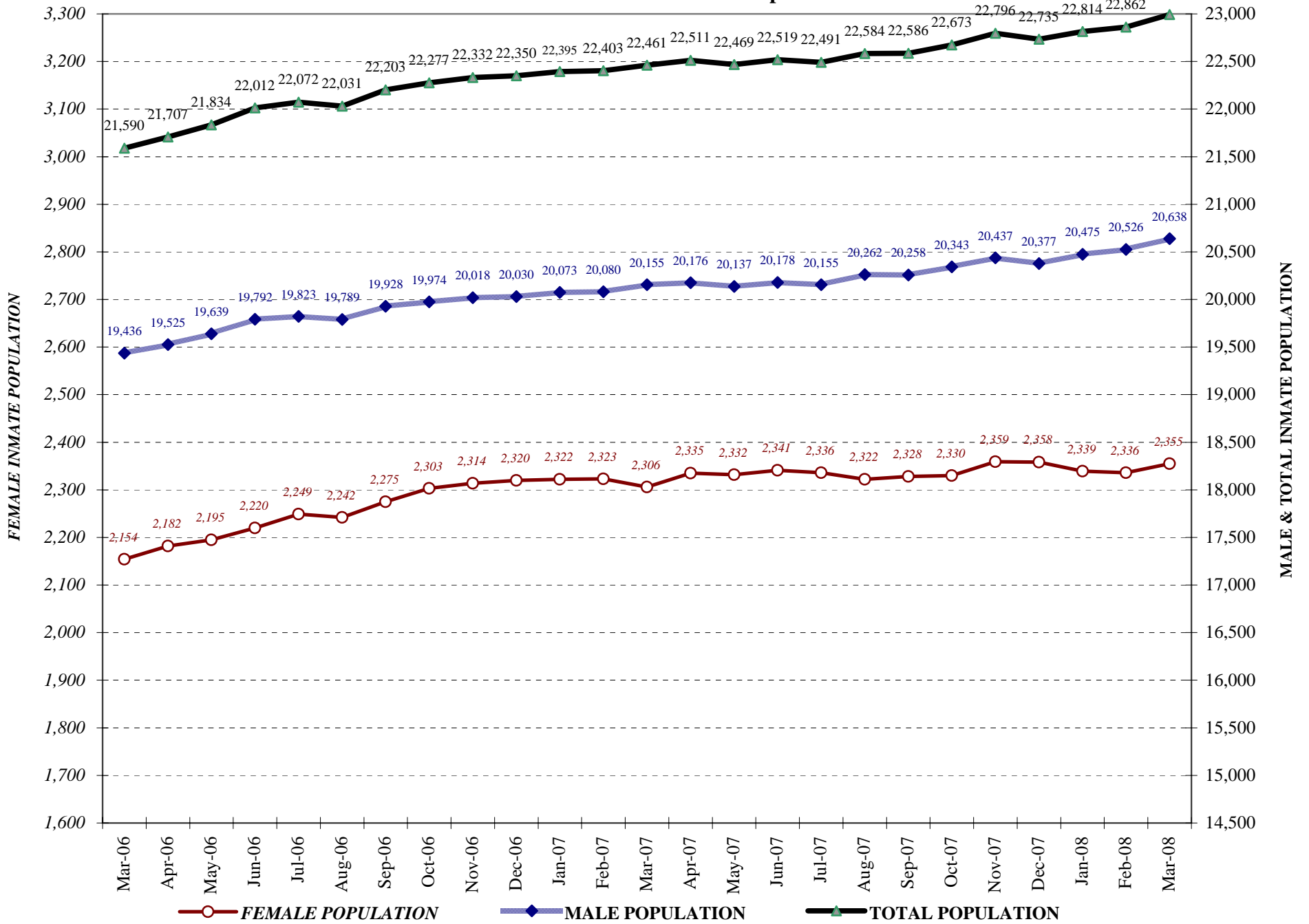
COLORADO DEPARTMENT OF CORRECTIONS

Adult Prison Releases

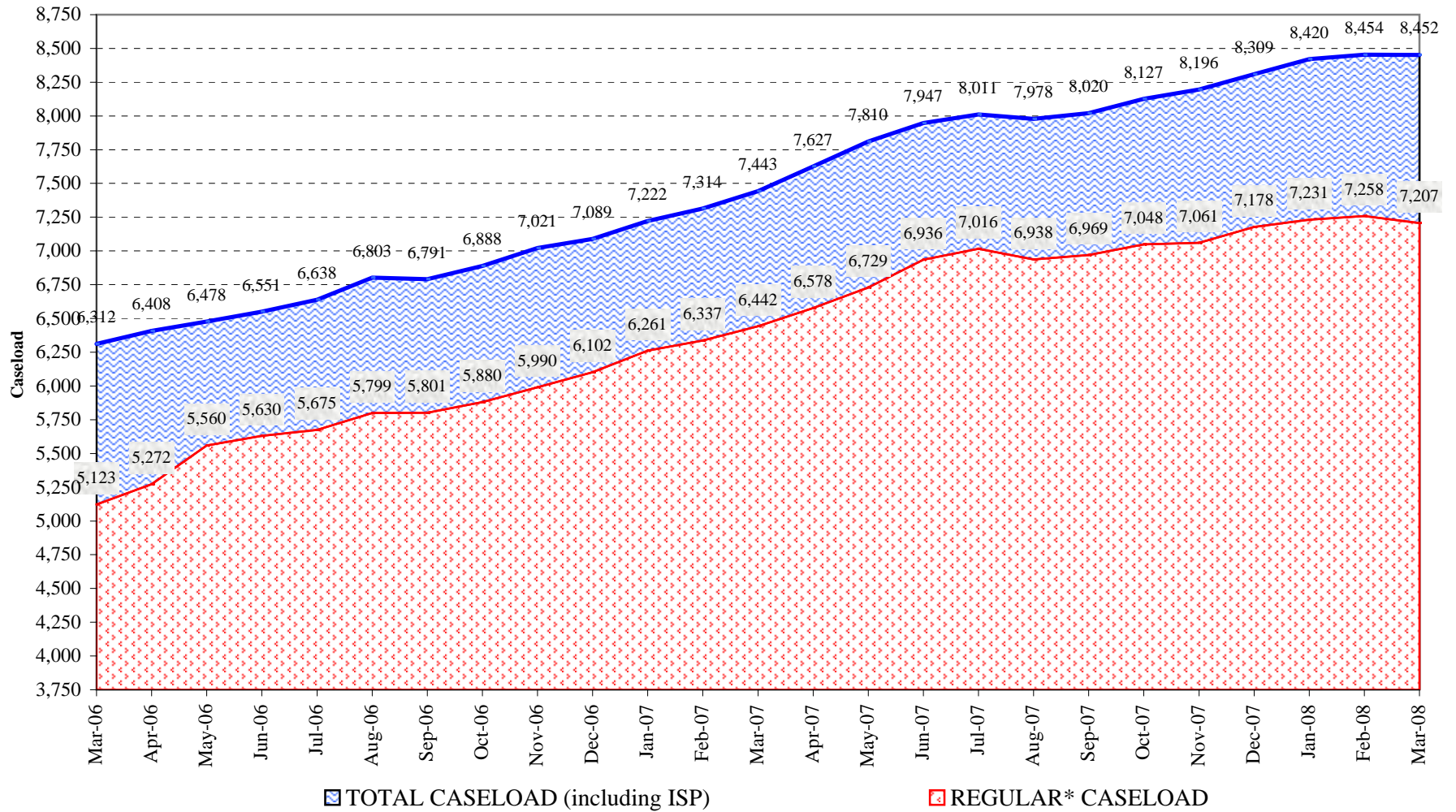


Total releases include releases to discretionary parole, mandatory parole and reparo, all types of discharges and other releases as detailed on the previous page.

COLORADO DEPARTMENT OF CORRECTIONS Adult Jurisdiction Inmate Population



COLORADO DEPARTMENT OF CORRECTIONS Parole Population



* Regular caseload includes interstate parole, but excludes out-of-state parolees and absconders.