

**COLORADO DEPARTMENT OF CORRECTIONS
MONTHLY POPULATION AND CAPACITY REPORT
AS OF FEBRUARY 29, 2008**

6-Mar-08

	01/31/08	CAPACITY CHANGES	------ 02/29/08 -----		------ 02/28/07 -----	
	OPERATIONAL CAPACITY*		OPERATIONAL CAPACITY*	ON-GRDS POPULATION	OPERATIONAL CAPACITY*	ON-GRDS POPULATION
COLO STATE PENITENTIARY	756		756	747	756	748
CENTENNIAL CORR FAC	336		336	302	336	316
STERLING CORR FAC	2,545		2,545	2,480	2,541	2,513
LIMON CORR FAC	953		953	888	953	944
ARK VALLEY CORR FAC	1,007		1,007	1,006	1,007	1,001
BUENA VISTA CORR FAC	926		926	906	826	807
BUENA VISTA MIN CTR	292		292	286	292	287
COLO TERR CORR FAC	936		936	926	786	777
FORT LYON CORR FAC	500		500	480	500	494
FREMONT CORR FAC	1,660		1,660	1,651	1,471	1,422
LA VISTA CORR FAC	519		519	468	472	466
ARROWHEAD CORR CTR	494		494	490	494	491
FOUR MILE CORR CTR	499		499	493	499	495
TRINIDAD CORR FAC	484		484	475	484	477
S.T.U. at Y.O.S.	30		30	25	30	29
SKYLINE CORR CTR	249		249	244	249	248
COLORADO CORR CTR	150		150	145	150	134
DELTA CORR CTR	484		484	477	484	464
RIFLE CORR CTR	192		192	185	192	184
COLO CORR ALT PROGRAM	100		100	103	100	88
COLO WOMEN'S CORR FAC	224		224	217	224	218
DENVER WOMEN'S CORR FAC	866		866	764	900	766
DENVER REC DIAG CTR	480		480	464	480	489
SAN CARLOS CORR FAC	255		255	249	255	245
SUBTOTAL	14,937	0	14,937	14,471	14,481	14,103
CONTRACTS:						
BENT COUNTY CORR CTR	724		724	620	724	668
HUERFANO COUNTY CORR CTR	774		774	689	774	704
CROWLEY COUNTY CORR FAC	1,720		1,720	1,546	1,720	1,505
KIT CARSON COUNTY CORR FAC	820		820	731	820	720
CHEYENNE MTN REENTRY CTR	592		592	590	500	480
HIGH PLAINS CORR FAC	270		270	241	270	256
NORTH FORK OK CORR FAC	480		480	480	480	480
OFF-GROUNDS POPULATION:				278		237
ESCAPEES/WALKAWAYS				244		244
REVOCATIONS-JAIL				0		0
JAIL BACKLOG:						
BACKLOG LESS THAN 72 HOURS			126		143	
BACKLOG GREATER THAN 72 HOURS (FISCAL YTD AVE = 108)			64		199	
BACKLOG-PAROLEES AWAITING TRANSFER			42		63	
TOTAL JAIL BACKLOG				232		405
COUNTY JAIL CONTRACTS				50		64
COMMUNITY CORRECTIONS						
COMMUNITY						
RESIDENTIAL	1,378	-1	1,377	1,377	1,316	1,316
PAROLE REVOCATIONS	1	0	1	1	0	0
REVOKED-RET TO CUST	264	-5	259	259	231	231
NON-RESIDENTIAL	93	-40	53	53	44	44
REGRESSIONS	51	9	60	60	39	39
TOTAL COMMUNITY	1,787	-37	1,750	1,750	1,630	1,630
ISP						
RESIDENTIAL	881	3	884	884	857	857
NON-RESIDENTIAL	46	0	46	46	39	39
REGRESSIONS	16	-6	10	10	11	11
TOTAL ISP	943	-3	940	940	907	907
TOTAL COMM. CORRECTIONS	2,730	-40	2,690	2,690	2,537	2,537
MALE POPULATION			20,526		20,080	
FEMALE POPULATION			2,336		2,323	
TOTAL INMATE JURISDICTIONAL POPULATION				22,862		22,403

*OPERATIONAL CAPACITY INCLUDES ALL BEDS AVAILABLE FOR USE, INCLUDING MANAGEMENT CONTROL UNITS, BUT EXCLUDES EMERGENCY DOUBLE BUNKING

**COLORADO DEPARTMENT OF CORRECTIONS
MONTHLY POPULATION AND CAPACITY REPORT
AS OF FEBRUARY 29, 2008**

6-Mar-08

CURRENT MONTH CHANGES IN CAPACITY:

NONE

NET MONTHLY GROWTH RATE:

CURRENT MONTH	48
FISCAL YEAR-TO-DATE AVERAGE	43

YOUTHFUL OFFENDER SYSTEM

	----- 02/29/08 -----			02/28/07
	PUEBLO	CONTRACT FACILITIES	COMM. CORR.	TOTAL POPULATION
INTAKE/IDO	10			1
RFP/REMEDICATION	14			8
PHASE I	139			156
PHASE II	9			9
PHASE III			39	32
OFF GROUNDS/BACKLOG				5
TOTAL Y.O.S. POPULATION	172	0	39	214

	CURRENT MONTH	FISCAL YR. TO DATE
YOS ADMISSIONS	6	38
YOS RELEASES:		
COMPLETION OF SENTENCE	1	19
JUDICIAL RELEASE TO PROB/CT ORD DISCHG	1	3
JUDICIAL TRANSFER TO DOC	0	0
TERMINATION/FAILURE	0	7
DECEASED	0	0
TOTAL RELEASES	2	29

PAROLE CASELOAD

	----- 02/29/08 -----			----- 01/31/08 -----		----- 02/28/07 -----	
	DOMESTIC	INTERST PAR/PROB	TOTAL CASELOAD	DOMESTIC	TOTAL CASELOAD	DOMESTIC	TOTAL CASELOAD
DENVER REGION							
REGULAR	2,591	83	2,674	2,639	2,648	2,333	218
ISP	566		566	524	524	446	446
SUBTOTAL	3,157	83	3,240	3,163	3,244	2,779	2,879
NORTHEAST REGION							
REGULAR	1,931	88	2,019	1,905	1,878	1,662	1,546
ISP	280		280	293	293	203	203
SUBTOTAL	2,211	88	2,299	2,198	2,283	1,865	1,915
SOUTHEAST REGION							
REGULAR	1,758	89	1,847	1,744	1,747	1,453	1,427
ISP	249		249	262	262	223	223
SUBTOTAL	2,007	89	2,096	2,006	2,098	1,676	1,760
WESTERN REGION							
REGULAR	675	43	718	640	743	616	648
ISP	101		101	110	110	105	105
SUBTOTAL	776	43	819	750	795	721	760
TOTAL CASELOAD							
REGULAR	6,955	303	7,258	6,928	7,231	6,064	6,337
ISP	1,196		1,196	1,189	1,189	977	977
TOTAL	8,151	303	8,454	8,117	8,420	7,041	7,314
ADDITIONAL CASELOAD:							
OUT-OF-STATE PAROLEES			1,913		1,909		1,763
PAROLEE ABSCONDERS			815		821		773

COLORADO DEPARTMENT OF CORRECTIONS
MONTHLY POPULATION AND CAPACITY REPORT
AS OF FEBRUARY 29, 2008

	02/29/2008 Population			----- FINAL CUSTODY DESIGNATION* -----					
	On-Grds.	Off-Grds	Total	Uncls.	Ad.Seg	Close	Medium	Min.-Res.	Minimum
Male Population									
COLO STATE PENITENTIARY	747	7	754		737	9	2	3	3
CENTENNIAL CORR FAC	302	0	302			282	5	9	6
STERLING CORR FAC	2,480	23	2,503		271	759	504	540	429
LIMON CORR FAC	888	9	897		5	656	174	49	13
ARK VALLEY CORR FAC	1,006	18	1,024		3	435	342	176	68
BUENA VISTA CORR FAC	906	23	929		9	341	372	136	71
BUENA VISTA MIN CTR	286	3	289					218	71
COLO TERR CORR FAC	925	9	934		10	202	332	267	123
FORT LYON CORR FAC	480	7	487		1	30	186	199	71
FREMONT CORR FAC	1,651	22	1,673		18	219	453	580	403
ARROWHEAD CORR CTR	490	1	491				2	310	179
FOUR MILE CORR CTR	493	4	497				1	336	160
TRINIDAD CORR FAC	475	11	486		1		2	439	44
S.T.U. at Y.O.S.	25	1	26				4	20	2
SKYLINE CORR CTR	244	1	245					3	242
COLORADO CORR CTR	145	0	145					1	144
DELTA CORR CTR	477	4	481					1	480
RIFLE CORR CTR	185	2	187						187
COLO CORR ALT PROGRAM	98	7	105				2	1	102
DENVER REC DIAG CTR	463	17	480	133	5	32	121	110	79
SAN CARLOS CORR FAC	249	4	253		24	109	59	37	24
CONTRACTS:									
BENT COUNTY CORR CTR	620	14	634			7	354	174	99
HUERFANO COUNTY CORR CTR	689	16	705		3	5	357	205	135
CROWLEY COUNTY CORR FAC	1,546	26	1,572		7	0	811	533	221
KIT CARSON COUNTY CORR FAC	731	13	744		2	4	383	235	120
CHEYENNE MTN REENTRY CTR	590	4	594			1	154	267	172
NORTH FORK OK CORR FAC	480	0	480			5	209	177	89
COMMUNITY/ISP	1,779	85	1,864			1	30	77	1,756
Total Classified Male Population	19,450	331	19,781	133	1,096	3,097	4,859	5,103	5,493
Percent of Total				0.7%	5.5%	15.7%	24.6%	25.8%	27.8%
Unclassified Facilities:									
JAIL BACKLOG/REVOICATIONS	208	0	208						
COUNTY JAIL CONTRACTS	50	0	50						
REVOKED TO JAIL	0	0	0						
REVOKED TO COMM CTR	1	0	1						
REVOKED-RET TO CUST FAC	176	45	221						
COMM/ISP REGRESSIONS	0	59	59						
ESCAPEES/WALKAWAYS	42	164	206						
Total Unclassified Facilities	477	268	745						
Total Male Population	19,927	599	20,526						
Female Population									
COLO WOMEN'S CORR FAC	217	2	219			42	33	63	81
DENVER WOMEN'S CORR FAC	764	14	778	10	17	122	121	313	195
LA VISTA CORR FAC	468	8	476		2	55	79	220	120
COLO CORR ALT PROGRAM	5	0	5					1	4
DENVER REC DIAG CTR INF	1	0	1			1			
COLO TERR CORR FAC INF.	1	0	1						1
CONTRACTS:									
HIGH PLAINS CORR FAC	241	8	249				32	131	86
COMMUNITY/ISP	482	14	496	1			6	54	435
Total Classified Female Population	2,179	46	2,225	11	19	220	271	782	922
Percent of Total				0.5%	0.9%	9.9%	12.2%	35.1%	41.4%
Unclassified Facilities:									
JAIL BACKLOG	24	0	24						
COUNTY JAIL CONTRACTS	0	0	0						
REVOKED TO JAIL	0	0	0						
REVOKED TO COMM CTR	0	0	0						
REVOKED-RET TO CUST FAC	32	6	38						
COMM/ISP REGRESSIONS	0	11	11						
ESCAPEES/WALKAWAYS	1	37	38						
Total Unclassified Facilities	57	54	111						
Total Female Population	2,236	100	2,336						

COLORADO DEPARTMENT OF CORRECTIONS
ADULT INMATE JURISDICTIONAL POPULATION (1)

DATE: 3/6/2008

DATE	MALE POPULATION			FEMALE POPULATION			TOTAL POPULATION		
	Male Population	Net Change	Fiscal Y-T-D Average	Female Population	Net Change	Fiscal Y-T-D Average	Total Population	Net Change	Fiscal Y-T-D Average
02-29-08	20,526	51	44	2,336	-3	-1	22,862	48	43
01-31-08	20,475	98		2,339	-19		22,814	79	
12-31-07	20,377	-60		2,358	-1		22,735	-61	
11-30-07	20,437	94		2,359	29		22,796	123	
10-31-07	20,343	85		2,330	2		22,673	87	
09-30-07	20,258	-4		2,328	6		22,586	2	
08-31-07	20,262	107		2,322	-14		22,584	93	
07-31-07	20,155	-23		2,336	-5		22,491	-28	
06-30-07	20,178	41		2,341	9		22,519	50	
05-31-07	20,137	-39		2,332	-3		22,469	-42	
04-30-07	20,176	21		2,335	29		22,511	50	
03-31-07	20,155	75		2,306	-17		22,461	58	
02-28-07	20,080	7		2,323	1		22,403	8	
01-31-07	20,073	43		2,322	2		22,395	45	
12-31-06	20,030	12	32	2,320	6	10	22,350	18	42
11-30-06	20,018	44		2,314	11		22,332	55	
10-31-06	19,974	46		2,303	28		22,277	74	
09-30-06	19,928	139		2,275	33		22,203	172	
08-31-06	19,789	-34		2,242	-7		22,031	-41	
07-31-06	19,823	31		2,249	29		22,072	60	
06-30-06	19,792	153		2,220	25		22,012	178	
05-31-06	19,639	114		2,195	13		21,834	127	
04-30-06	19,525	89		2,182	28		21,707	117	
03-31-06	19,436	160		2,154	23		21,590	183	
02-28-06	19,276	31		2,131	-4		21,407	27	
01-31-06	19,245	53		2,135	-9		21,380	44	
12-31-05	19,192	117	97	2,144	7	12	21,336	124	109
11-30-05	19,075	32		2,137	9		21,212	41	
10-31-05	19,043	43		2,128	13		21,171	56	
09-30-05	19,000	71		2,115	-7		21,115	64	
08-31-05	18,929	183		2,122	19		21,051	202	
07-31-05	18,746	115		2,103	30		20,849	145	
06-30-05	18,631		68	2,073		27	20,704		95
06-30-04	17,814		49	1,755		11	19,569		60
06-30-03	17,226		57	1,620		10	18,846		67
06-30-02	16,539		87	1,506		14	18,045		101
06-30-01	15,493		63	1,340		6	16,833		70
06-30-00	14,733		99	1,266		7	15,999		106
06-30-99	13,547		75	1,179		14	14,726		89
06-30-98	12,647		81	1,016		9	13,663		89
06-30-97	11,681			909			12,590		

(1) Adult inmate jurisdictional population includes on-grounds, off-grounds, out-of-state, escapees, and jail backlog and excludes offenders sentenced to the Youthful Offender System (Y.O.S.).

COLORADO DEPARTMENT OF CORRECTIONS
ADULT INMATE RELEASES FROM PRISON
TOTAL Population (Male and Female)

Date: 3/6/2008

	Parole				Discharge					Other				Total
	Discretionary*	Mandatory*	Mand. Repar.*	Com. Supv.	Sentence	H.B. 1087	Martin/Cooper	Chgs/Det.	Com Spv. Elim	Probation	Ct. Ord. Dsch.	Appeal Bond	Deceased	
Feb-08	422	214	82	0	35	49	3	17	0	9	6	1	5	843
Jan-08	531	179	76	0	33	66	10	21	0	6	9	0	4	935
Dec-07	474	157	75	0	35	55	10	17	0	17	7	0	8	855
Nov-07	492	154	53	0	29	56	11	16	0	21	14	0	3	849
Oct-07	514	185	98	0	24	55	11	12	0	12	8	0	2	921
Sep-07	467	153	47	0	39	41	6	9	0	5	13	1	3	784
Aug-07	457	192	114	0	34	54	8	21	0	16	14	0	5	915
Jul-07	423	196	115	0	34	58	6	22	0	7	10	0	4	875
Jun-07	433	188	92	0	19	49	13	11	0	9	8	0	2	824
May-07	499	216	129	0	31	43	7	20	0	14	9	0	4	972
Apr-07	447	197	100	0	26	51	9	16	0	6	10	0	6	868
Mar-07	415	187	140	0	33	64	4	14	0	14	13	1	3	888
Feb-07	405	235	80	0	24	58	12	19	0	15	5	0	0	853
Jan-07	542	192	42	0	37	59	5	15	0	15	16	0	9	932
Dec-06	349	179	59	0	27	44	10	14	0	13	6	1	2	704
Nov-06	422	202	70	0	30	45	12	12	0	16	11	0	6	826
Oct-06	426	186	84	0	36	44	11	10	0	6	7	1	5	816
Sep-06	348	180	65	0	29	44	13	15	0	13	7	0	2	716
Aug-06	430	239	104	0	37	52	10	21	0	17	11	0	2	923
Jul-06	350	174	87	0	43	52	9	20	0	17	6	0	7	765
Jun-06	375	199	89	0	37	43	10	16	0	16	7	0	2	794
May-06	317	235	75	0	34	52	10	15	0	13	9	0	3	763
Apr-06	227	235	91	0	41	54	17	17	0	10	7	0	8	707
Mar-06	305	282	113	0	39	46	10	12	0	18	5	1	2	833

Definitions of Release Types

Discretionary parole-Released to parole through Parole Board discretion prior to mandatory release or sentence discharge date.

Mandatory parole-Released to parole on mandatory release date.

Mand. Repar-Reparoled on specific date set by Parole Board (includes S.B. 252 reparoles). n/a - breakout not available prior to June 2004.

Com. Supv.-Released to serve 12 months of community supervision.

Sentence discharge-Completion of sentence with no further supervision.

H.B. 1087 discharge-Completion of sentence with no further supervision, subject to earn time provisions of H.B. 95-1087.

Martin/ Cooper discharge-Completion of sentence with no further supervision, sex offender subject to Martin/Cooper Supreme Court decision.

Chgs/ Det. discharge-Completion of sentence, released to other law enforcement for pending charges or detainees.

Com. Spv. Elim discharge-Completion of sentence following reincarceration on community supervision sentence.

Probation-Released by court to probation.

Ct. Ord. Dsch.-Released by court order.

Appeal Bond-Released by court to appeal bond.

Deceased-Offender death in prison.

*Due to the decrease in community transportation services, the Department implemented a procedural change in December 2005 with regards to releasing inmates on weekends. As a result of this change, discretionary releases have increased and mandatory releases have decreased.

COLORADO DEPARTMENT OF CORRECTIONS

ADULT INMATE RELEASES FROM PRISON

Male Population Only

Date: 3/6/2008

	Parole				Discharge					Other				Total
	Discretionary*	Mandatory*	Mand. Repar.*	Com. Supv.	Sentence	H.B. 1087	Martin/Cooper	Chgs/Det.	Com Spv. Elim	Probation	Ct. Ord. Dsch.	Appeal Bond	Deceased	
Feb-08	362	189	72	0	34	43	3	16	0	7	4	1	5	736
Jan-08	445	156	64	0	31	59	10	16	0	5	6	0	4	796
Dec-07	401	141	66	0	31	45	10	16	0	16	7	0	8	741
Nov-07	425	133	49	0	25	50	11	14	0	14	13	0	3	737
Oct-07	432	154	84	0	23	48	11	12	0	11	7	0	2	784
Sep-07	413	131	41	0	36	35	6	8	0	4	13	1	3	691
Aug-07	377	170	104	0	29	46	8	20	0	14	10	0	5	783
Jul-07	360	171	94	0	34	52	6	20	0	7	6	0	4	754
Jun-07	366	172	79	0	18	45	12	11	0	8	8	0	2	721
May-07	432	194	110	0	30	37	7	18	0	11	9	0	3	851
Apr-07	382	179	90	0	24	47	8	15	0	4	8	0	6	763
Mar-07	344	166	118	0	28	56	4	14	0	10	13	0	3	756
Feb-07	330	209	71	0	23	51	11	16	0	14	5	0	0	730
Jan-07	453	169	37	0	34	53	5	15	0	14	13	0	7	800
Dec-06	298	160	56	0	24	38	10	14	0	13	6	1	2	622
Nov-06	358	178	62	0	28	42	12	12	0	13	10	0	6	721
Oct-06	373	163	73	0	34	36	11	9	0	6	6	1	5	717
Sep-06	300	148	59	0	29	40	13	12	0	12	7	0	2	622
Aug-06	364	209	89	0	34	44	10	21	0	14	10	0	2	797
Jul-06	310	158	72	0	40	45	9	18	0	15	4	0	7	678
Jun-06	325	180	74	0	32	41	10	13	0	15	6	0	2	698
May-06	269	202	60	0	33	47	10	15	0	12	8	0	3	659
Apr-06	178	213	79	0	35	47	17	16	0	9	6	0	8	608
Mar-06	267	246	100	0	36	41	10	12	0	14	5	1	2	734

Definitions of Release Types

Discretionary parole-Released to parole through Parole Board discretion prior to mandatory release or sentence discharge date.

Mandatory parole-Released to parole on mandatory release date.

Mand. Repar-Reparoled on specific date set by Parole Board (includes S.B. 252 reparoles). n/a - breakout not available prior to June 2004.

Com. Supv.-Released to serve 12 months of community supervision.

Sentence discharge-Completion of sentence with no further supervision.

H.B. 1087 discharge-Completion of sentence with no further supervision, subject to earn time provisions of H.B. 95-1087.

Martin/ Cooper discharge-Completion of sentence with no further supervision, sex offender subject to Martin/Cooper Supreme Court decision.

Chgs/ Det. discharge-Completion of sentence, released to other law enforcement for pending charges or detainees.

Com. Spv. Elim discharge-Completion of sentence following reincarceration on community supervision sentence.

Probation-Released by court to probation.

Ct. Ord. Dsch.-Released by court order.

Appeal Bond-Released by court to appeal bond.

Deceased-Offender death in prison.

***Due to the decrease in community transportation services, the Department implemented a procedural change in December 2005 with regards to releasing inmates on weekends. As a result of this change, discretionary releases have increased and mandatory releases have decreased.**

COLORADO DEPARTMENT OF CORRECTIONS
ADULT INMATE RELEASES FROM PRISON
Female Population Only

Date: 3/6/2008

	Parole				Discharge					Other				Total
	Discretionary*	Mandatory*	Mand. Repar.*	Com. Supv.	Sentence	H.B. 1087	Martin/Cooper	Chgs/Det.	Com Spv. Elim	Probation	Ct. Ord. Dsch.	Appeal Bond	Deceased	
Feb-08	60	25	10	0	1	6	0	1	0	2	2	0	0	107
Jan-08	86	23	12	0	2	7	0	5	0	1	3	0	0	139
Dec-07	73	16	9	0	4	10	0	1	0	1	0	0	0	114
Nov-07	67	21	4	0	4	6	0	2	0	7	1	0	0	112
Oct-07	82	31	14	0	1	7	0	0	0	1	1	0	0	137
Sep-07	54	22	6	0	3	6	0	1	0	1	0	0	0	93
Aug-07	80	22	10	0	5	8	0	1	0	2	4	0	0	132
Jul-07	63	25	21	0	0	6	0	2	0	0	4	0	0	121
Jun-07	67	16	13	0	1	4	1	0	0	1	0	0	0	103
May-07	67	22	19	0	1	6	0	2	0	3	0	0	1	121
Apr-07	65	18	10	0	2	4	1	1	0	2	2	0	0	105
Mar-07	71	21	22	0	5	8	0	0	0	4	0	1	0	132
Feb-07	75	26	9	0	1	7	1	3	0	1	0	0	0	123
Jan-07	89	23	5	0	3	6	0	0	0	1	3	0	2	132
Dec-06	51	19	3	0	3	6	0	0	0	0	0	0	0	82
Nov-06	64	24	8	0	2	3	0	0	0	3	1	0	0	105
Oct-06	53	23	11	0	2	8	0	1	0	0	1	0	0	99
Sep-06	48	32	6	0	0	4	0	3	0	1	0	0	0	94
Aug-06	66	30	15	0	3	8	0	0	0	3	1	0	0	126
Jul-06	40	16	15	0	3	7	0	2	0	2	2	0	0	87
Jun-06	50	19	15	0	5	2	0	3	0	1	1	0	0	96
May-06	48	33	15	0	1	5	0	0	0	1	1	0	0	104
Apr-06	49	22	12	0	6	7	0	1	0	1	1	0	0	99
Mar-06	38	36	13	0	3	5	0	0	0	4	0	0	0	99

Definitions of Release Types

Discretionary parole-Released to parole through Parole Board discretion prior to mandatory release or sentence discharge date.

Mandatory parole-Released to parole on mandatory release date.

Mand. Repar-Reparoled on specific date set by Parole Board (includes S.B. 252 reparoles). n/a - breakout not available prior to June 2004.

Com. Supv.-Released to serve 12 months of community supervision.

Sentence discharge-Completion of sentence with no further supervision.

H.B. 1087 discharge-Completion of sentence with no further supervision, subject to earn time provisions of H.B. 95-1087.

Martin/ Cooper discharge-Completion of sentence with no further supervision, sex offender subject to Martin/Cooper Supreme Court decision.

Chgs/ Det. discharge-Completion of sentence, released to other law enforcement for pending charges or detainees.

Com. Spv. Elim discharge-Completion of sentence following reincarceration on community supervision sentence.

Probation-Released by court to probation.

Ct. Ord. Dsch.-Released by court order.

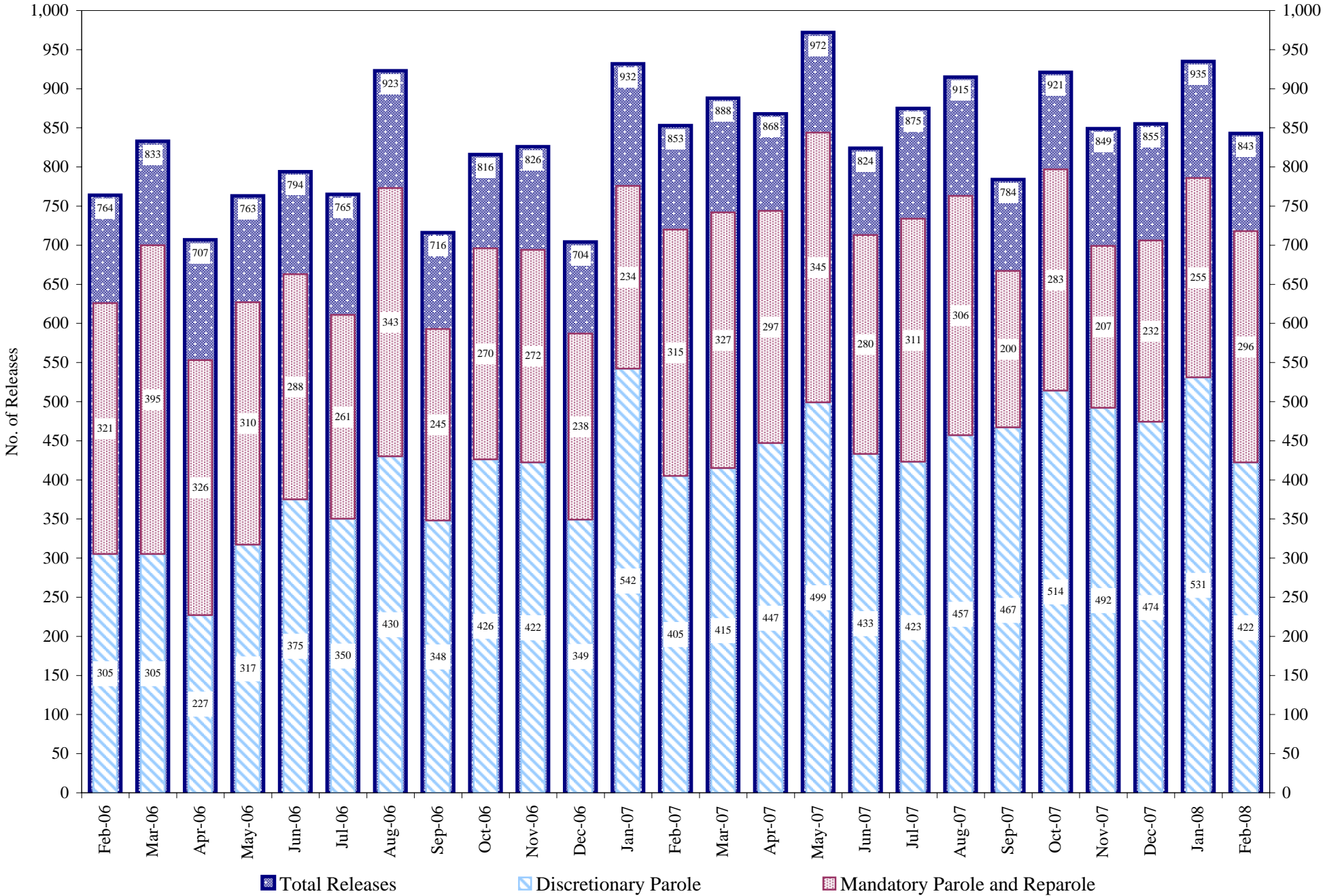
Appeal Bond-Released by court to appeal bond.

Deceased-Offender death in prison.

*Due to the decrease in community transportation services, the Department implemented a procedural change in December 2005 with regards to releasing inmates on weekends. As a result of this change, discretionary releases have increased and mandatory releases have decreased.

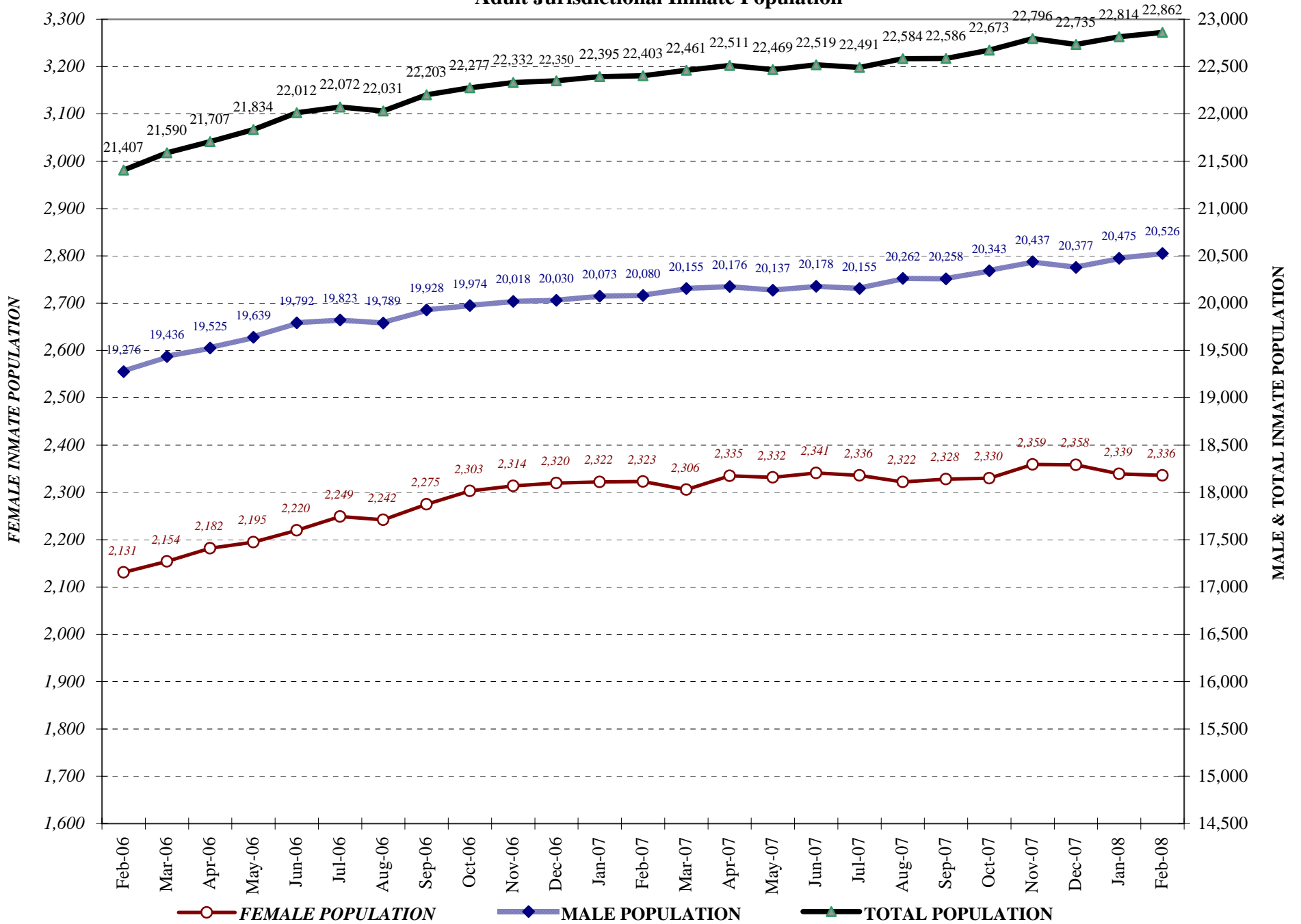
COLORADO DEPARTMENT OF CORRECTIONS

Adult Prison Releases

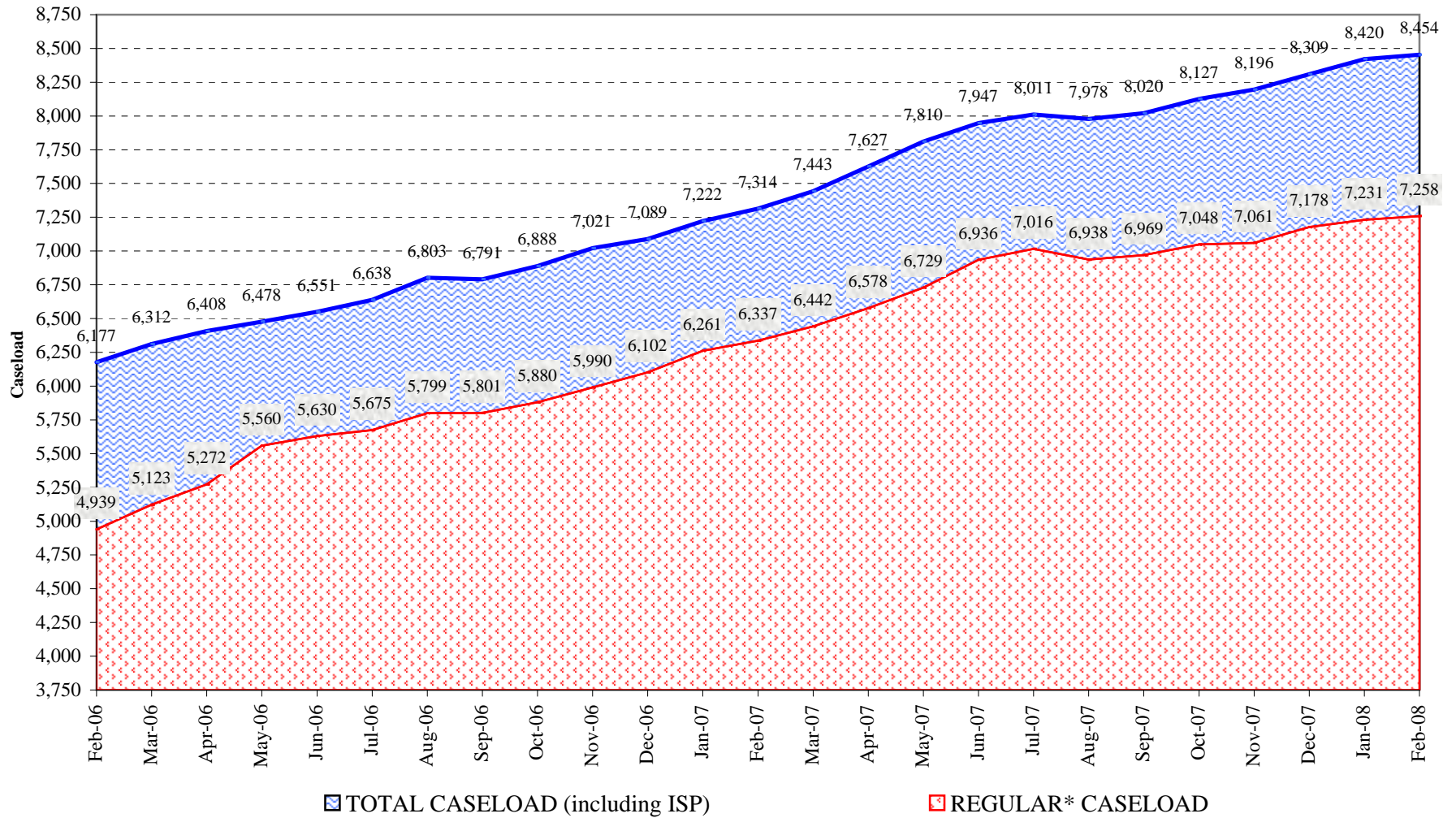


Total releases include releases to discretionary parole, mandatory parole and reparole, all types of discharges and other releases as detailed on the previous page.

COLORADO DEPARTMENT OF CORRECTIONS Adult Jurisdiction Inmate Population



COLORADO DEPARTMENT OF CORRECTIONS Parole Population



* Regular caseload includes interstate parole, but excludes out-of-state parolees and absconders.