

**COLORADO DEPARTMENT OF CORRECTIONS
MONTHLY POPULATION AND CAPACITY REPORT
AS OF JANUARY 31, 2008**

5-Feb-08

	12/31/07	CAPACITY CHANGES	------ 01/31/08 -----		------ 01/31/07 -----	
	OPERATIONAL CAPACITY*		OPERATIONAL CAPACITY*	ON-GRDS POPULATION	OPERATIONAL CAPACITY*	ON-GRDS POPULATION
COLO STATE PENITENTIARY	756		756	747	756	752
CENTENNIAL CORR FAC	336		336	299	336	324
STERLING CORR FAC	2,545		2,545	2,503	2,445	2,383
LIMON CORR FAC	953		953	910	953	931
ARK VALLEY CORR FAC	1,007		1,007	994	1,007	1,001
BUENA VISTA CORR FAC	926		926	917	826	815
BUENA VISTA MIN CTR	292		292	286	292	286
COLO TERR CORR FAC	936		936	904	786	794
FORT LYON CORR FAC	500		500	479	500	466
FREMONT CORR FAC	1,660		1,660	1,644	1,471	1,435
LA VISTA CORR FAC	519		519	470	472	471
ARROWHEAD CORR CTR	494		494	488	494	488
FOUR MILE CORR CTR	499		499	494	499	496
TRINIDAD CORR FAC	484		484	470	484	480
S.T.U. at Y.O.S.	30		30	23	30	30
SKYLINE CORR CTR	249		249	248	249	243
COLORADO CORR CTR	150		150	148	150	144
DELTA CORR CTR	484		484	471	484	468
RIFLE CORR CTR	192		192	187	192	187
COLO CORR ALT PROGRAM	100		100	98	100	101
COLO WOMEN'S CORR FAC	224		224	211	224	208
DENVER WOMEN'S CORR FAC	866		866	752	900	778
DENVER REC DIAG CTR	480		480	466	480	455
SAN CARLOS CORR FAC	255		255	247	255	250
SUBTOTAL	14,937	0	14,937	14,456	14,385	13,986
CONTRACTS:						
BENT COUNTY CORR CTR	724		724	599	724	691
HUERFANO COUNTY CORR CTR	774		774	691	774	718
CROWLEY COUNTY CORR FAC	1,720		1,720	1,483	1,720	1,537
KIT CARSON COUNTY CORR FAC	820		820	760	820	713
CHEYENNE MTN REENTRY CTR	500	92	592	565	500	479
HIGH PLAINS CORR FAC	270		270	233	270	257
NORTH FORK OK CORR FAC	480		480	478	480	480
OFF-GROUNDS POPULATION:						
ESCAPEES/WALKAWAYS				242		245
REVOCATIONS-JAIL				0		0
JAIL BACKLOG:						
BACKLOG LESS THAN 72 HOURS			126		184	
BACKLOG GREATER THAN 72 HOURS (FISCAL YTD AVE = 96			50		214	
BACKLOG-PAROLEES AWAITING TRANSFER			63		76	
TOTAL JAIL BACKLOG				239		474
COUNTY JAIL CONTRACTS				65		63
COMMUNITY CORRECTIONS						
COMMUNITY						
RESIDENTIAL	1,377	1	1,378	1,378	1,289	1,289
PAROLE REVOCATIONS	0	1	1	1	1	1
REVOKED-RET TO CUST	257	7	264	264	232	232
NON-RESIDENTIAL	90	3	93	93	71	71
REGRESSIONS	53	-2	51	51	31	31
TOTAL COMMUNITY	1,777	10	1,787	1,787	1,624	1,624
ISP						
RESIDENTIAL	913	-32	881	881	864	864
NON-RESIDENTIAL	42	4	46	46	38	38
REGRESSIONS	8	8	16	16	8	8
TOTAL ISP	963	-20	943	943	910	910
TOTAL COMM. CORRECTIONS	2,740	-10	2,730	2,730	2,534	2,534
MALE POPULATION			20,475		20,073	
FEMALE POPULATION			2,339		2,322	
TOTAL INMATE JURISDICTIONAL POPULATION				22,814		22,395

*OPERATIONAL CAPACITY INCLUDES ALL BEDS AVAILABLE FOR USE, INCLUDING MANAGEMENT CONTROL UNITS, BUT EXCLUDES EMERGENCY DOUBLE BUNKING

**COLORADO DEPARTMENT OF CORRECTIONS
MONTHLY POPULATION AND CAPACITY REPORT
AS OF JANUARY 31, 2008**

	01/31/2008 Population			----- FINAL CUSTODY DESIGNATION* -----					
	On-Grds.	Off-Grds	Total	Uncls.	Ad.Seg	Close	Medium	Min.-Res.	Minimum
COLO STATE PENITENTIARY	747	8	755		744	5	4	1	1
CENTENNIAL CORR FAC	299	1	300		0	284	4	5	7
STERLING CORR FAC	2,503	26	2,529		266	739	514	568	442
LIMON CORR FAC	910	14	924		6	689	166	50	13
ARK VALLEY CORR FAC	994	13	1,007		1	437	339	163	67
BUENA VISTA CORR FAC	917	21	938		8	348	382	131	69
BUENA VISTA MIN CTR	286	5	291				1	224	66
COLO TERR CORR FAC	904	11	915		1	193	337	266	118
FORT LYON CORR FAC	479	12	491			32	189	194	76
FREMONT CORR FAC	1,644	10	1,654		14	217	435	582	406
ARROWHEAD CORR CTR	488	2	490					310	180
FOUR MILE CORR CTR	494	4	498				3	331	164
TRINIDAD CORR FAC	470	11	481			1	6	423	51
S.T.U. at Y.O.S.	23	1	24				14	10	
SKYLINE CORR CTR	248	3	251					2	249
COLORADO CORR CTR	148	1	149						149
DELTA CORR CTR	471	5	476					1	475
RIFLE CORR CTR	187	5	192					1	191
COLO CORR ALT PROGRAM	96	7	103				1	4	98
DENVER REC DIAG CTR	463	13	476	115	4	39	123	142	53
SAN CARLOS CORR FAC	247	3	250		24	108	59	34	25
CONTRACTS:									
BENT COUNTY CORR CTR	599	12	611			4	333	174	100
HUERFANO COUNTY CORR CTR	691	9	700			2	364	207	127
CROWLEY COUNTY CORR FAC	1,483	26	1,509			3	752	543	211
KIT CARSON COUNTY CORR FAC	760	13	773		1	4	415	243	110
CHEYENNE MTN REENTRY CTR	565	0	565			1	150	237	177
NORTH FORK OK CORR FAC	478	0	478			5	207	183	83
COMMUNITY/ISP	1,777	121	1,898			12	36	92	1,758
Total Classified Male Population	19,371	357	19,728	115	1,069	3,123	4,834	5,121	5,466
Percent of Total				0.6%	5.4%	15.8%	24.5%	26.0%	27.7%
Unclassified Facilities:									
JAIL BACKLOG/REVOICATIONS	196	0	196						
COUNTY JAIL CONTRACTS	65	0	65						
REVOKED TO JAIL	0	0	0						
REVOKED TO COMM CTR	1	0	1						
REVOKED-RET TO CUST FAC	180	44	224						
COMM/ISP REGRESSIONS	0	58	58						
ESCAPEES/WALKAWAYS	44	159	203						
Total Unclassified Facilities	486	261	747						
Total Male Population	19,857	618	20,475						
COLO WOMEN'S CORR FAC	211	3	214			41	35	55	83
DENVER WOMEN'S CORR FAC	752	17	769	15	18	119	111	324	182
LA VISTA CORR FAC	470	5	475			66	79	219	111
COLO CORR ALT PROGRAM	2	1	3						3
DENVER REC DIAG CTR INF	3	0	3		1		1		1
COLO TERR CORR FAC INF.	0	0	0						
CONTRACTS:									
HIGH PLAINS CORR FAC	233	11	244			2	28	130	84
COMMUNITY/ISP	482	18	500	1		4	7	54	434
Total Classified Female Population	2,153	55	2,208	16	19	232	261	782	898
Percent of Total				0.7%	0.9%	10.5%	11.8%	35.4%	40.7%
Unclassified Facilities:									
JAIL BACKLOG	43	0	43						
COUNTY JAIL CONTRACTS	0	0	0						
REVOKED TO JAIL	0	0	0						
REVOKED TO COMM CTR	0	0	0						
REVOKED-RET TO CUST FAC	36	4	40						
COMM/ISP REGRESSIONS	0	9	9						
ESCAPEES/WALKAWAYS	3	36	39						
Total Unclassified Facilities	82	49	131						
Total Female Population	2,235	104	2,339						

Male Population

Female Population

COLORADO DEPARTMENT OF CORRECTIONS
ADULT INMATE JURISDICTIONAL POPULATION (1)

DATE: 2/5/2008

DATE	MALE POPULATION			FEMALE POPULATION			TOTAL POPULATION		
	Male Population	Net Change	Fiscal Y-T-D Average	Female Population	Net Change	Fiscal Y-T-D Average	Total Population	Net Change	Fiscal Y-T-D Average
01-31-08	20,475	98	42	2,339	-19	0	22,814	79	42
12-31-07	20,377	-60		2,358	-1		22,735	-61	
11-30-07	20,437	94		2,359	29		22,796	123	
10-31-07	20,343	85		2,330	2		22,673	87	
09-30-07	20,258	-4		2,328	6		22,586	2	
08-31-07	20,262	107		2,322	-14		22,584	93	
07-31-07	20,155	-23		2,336	-5		22,491	-28	
06-30-07	20,178	41		2,341	9		22,519	50	
05-31-07	20,137	-39		2,332	-3		22,469	-42	
04-30-07	20,176	21		2,335	29		22,511	50	
03-31-07	20,155	75		2,306	-17		22,461	58	
02-28-07	20,080	7		2,323	1		22,403	8	
01-31-07	20,073	43		2,322	2		22,395	45	
12-31-06	20,030	12	32	2,320	6	10	22,350	18	42
11-30-06	20,018	44		2,314	11		22,332	55	
10-31-06	19,974	46		2,303	28		22,277	74	
09-30-06	19,928	139		2,275	33		22,203	172	
08-31-06	19,789	-34		2,242	-7		22,031	-41	
07-31-06	19,823	31		2,249	29		22,072	60	
06-30-06	19,792	153		2,220	25		22,012	178	
05-31-06	19,639	114		2,195	13		21,834	127	
04-30-06	19,525	89		2,182	28		21,707	117	
03-31-06	19,436	160		2,154	23		21,590	183	
02-28-06	19,276	31		2,131	-4		21,407	27	
01-31-06	19,245	53		2,135	-9		21,380	44	
12-31-05	19,192	117	97	2,144	7	12	21,336	124	109
11-30-05	19,075	32		2,137	9		21,212	41	
10-31-05	19,043	43		2,128	13		21,171	56	
09-30-05	19,000	71		2,115	-7		21,115	64	
08-31-05	18,929	183		2,122	19		21,051	202	
07-31-05	18,746	115		2,103	30		20,849	145	
06-30-05	18,631		68	2,073		27	20,704		95
06-30-04	17,814		49	1,755		11	19,569		60
06-30-03	17,226		57	1,620		10	18,846		67
06-30-02	16,539		87	1,506		14	18,045		101
06-30-01	15,493		63	1,340		6	16,833		70
06-30-00	14,733		99	1,266		7	15,999		106
06-30-99	13,547		75	1,179		14	14,726		89
06-30-98	12,647		81	1,016		9	13,663		89
06-30-97	11,681			909			12,590		

(1) Adult inmate jurisdictional population includes on-grounds, off-grounds, out-of-state, escapees, and jail backlog and excludes offenders sentenced to the Youthful Offender System (Y.O.S.).

COLORADO DEPARTMENT OF CORRECTIONS
ADULT INMATE RELEASES FROM PRISON
TOTAL Population (Male and Female)

Date: 2/5/2008

	Parole				Discharge					Other				Total
	Discretionary*	Mandatory*	Mand. Repar.*	Com. Supv.	Sentence	H.B. 1087	Martin/Cooper	Chgs/Det.	Com Spv. Elim	Probation	Ct. Ord. Dsch.	Appeal Bond	Deceased	
Jan-08	531	179	76	0	33	66	10	21	0	6	9	0	4	935
Dec-07	474	157	75	0	35	55	10	17	0	17	7	0	8	855
Nov-07	492	154	53	0	29	56	11	16	0	21	14	0	3	849
Oct-07	514	185	98	0	24	55	11	12	0	12	8	0	2	921
Sep-07	467	153	47	0	39	41	6	9	0	5	13	1	3	784
Aug-07	457	192	114	0	34	54	8	21	0	16	14	0	5	915
Jul-07	423	196	115	0	34	58	6	22	0	7	10	0	4	875
Jun-07	433	188	92	0	19	49	13	11	0	9	8	0	2	824
May-07	499	216	129	0	31	43	7	20	0	14	9	0	4	972
Apr-07	447	197	100	0	26	51	9	16	0	6	10	0	6	868
Mar-07	415	187	140	0	33	64	4	14	0	14	13	1	3	888
Feb-07	405	235	80	0	24	58	12	19	0	15	5	0	0	853
Jan-07	542	192	42	0	37	59	5	15	0	15	16	0	9	932
Dec-06	349	179	59	0	27	44	10	14	0	13	6	1	2	704
Nov-06	422	202	70	0	30	45	12	12	0	16	11	0	6	826
Oct-06	426	186	84	0	36	44	11	10	0	6	7	1	5	816
Sep-06	348	180	65	0	29	44	13	15	0	13	7	0	2	716
Aug-06	430	239	104	0	37	52	10	21	0	17	11	0	2	923
Jul-06	350	174	87	0	43	52	9	20	0	17	6	0	7	765
Jun-06	375	199	89	0	37	43	10	16	0	16	7	0	2	794
May-06	317	235	75	0	34	52	10	15	0	13	9	0	3	763
Apr-06	227	235	91	0	41	54	17	17	0	10	7	0	8	707
Mar-06	305	282	113	0	39	46	10	12	0	18	5	1	2	833
Feb-06	305	250	71	0	34	39	13	10	0	27	14	0	1	764

Definitions of Release Types

Discretionary parole-Released to parole through Parole Board discretion prior to mandatory release or sentence discharge date.

Mandatory parole-Released to parole on mandatory release date.

Mand. Repar-Reparoled on specific date set by Parole Board (includes S.B. 252 reparoles). n/a - breakout not available prior to June 2004.

Com. Supv.-Released to serve 12 months of community supervision.

Sentence discharge-Completion of sentence with no further supervision.

H.B. 1087 discharge-Completion of sentence with no further supervision, subject to earn time provisions of H.B. 95-1087.

Martin/ Cooper discharge-Completion of sentence with no further supervision, sex offender subject to Martin/Cooper Supreme Court decision.

Chgs/ Det. discharge-Completion of sentence, released to other law enforcement for pending charges or detainees.

Com. Spv. Elim discharge-Completion of sentence following reincarceration on community supervision sentence.

Probation-Released by court to probation.

Ct. Ord. Dsch.-Released by court order.

Appeal Bond-Released by court to appeal bond.

Deceased-Offender death in prison.

***Due to the decrease in community transportation services, the Department implemented a procedural change in December 2005 with regards to releasing inmates on weekends. As a result of this change, discretionary releases have increased and mandatory releases have decreased.**

COLORADO DEPARTMENT OF CORRECTIONS

ADULT INMATE RELEASES FROM PRISON

Male Population Only

Date: 2/5/2008

	Parole				Discharge					Other				Total
	Discretionary*	Mandatory*	Mand. Repar.*	Com. Supv.	Sentence	H.B. 1087	Martin/Cooper	Chgs/Det.	Com Spv. Elim	Probation	Ct. Ord. Dsch.	Appeal Bond	Deceased	
Jan-08	445	156	64	0	31	59	10	16	0	5	6	0	4	796
Dec-07	401	141	66	0	31	45	10	16	0	16	7	0	8	741
Nov-07	425	133	49	0	25	50	11	14	0	14	13	0	3	737
Oct-07	432	154	84	0	23	48	11	12	0	11	7	0	2	784
Sep-07	413	131	41	0	36	35	6	8	0	4	13	1	3	691
Aug-07	377	170	104	0	29	46	8	20	0	14	10	0	5	783
Jul-07	360	171	94	0	34	52	6	20	0	7	6	0	4	754
Jun-07	366	172	79	0	18	45	12	11	0	8	8	0	2	721
May-07	432	194	110	0	30	37	7	18	0	11	9	0	3	851
Apr-07	382	179	90	0	24	47	8	15	0	4	8	0	6	763
Mar-07	344	166	118	0	28	56	4	14	0	10	13	0	3	756
Feb-07	330	209	71	0	23	51	11	16	0	14	5	0	0	730
Jan-07	453	169	37	0	34	53	5	15	0	14	13	0	7	800
Dec-06	298	160	56	0	24	38	10	14	0	13	6	1	2	622
Nov-06	358	178	62	0	28	42	12	12	0	13	10	0	6	721
Oct-06	373	163	73	0	34	36	11	9	0	6	6	1	5	717
Sep-06	300	148	59	0	29	40	13	12	0	12	7	0	2	622
Aug-06	364	209	89	0	34	44	10	21	0	14	10	0	2	797
Jul-06	310	158	72	0	40	45	9	18	0	15	4	0	7	678
Jun-06	325	180	74	0	32	41	10	13	0	15	6	0	2	698
May-06	269	202	60	0	33	47	10	15	0	12	8	0	3	659
Apr-06	178	213	79	0	35	47	17	16	0	9	6	0	8	608
Mar-06	267	246	100	0	36	41	10	12	0	14	5	1	2	734
Feb-06	253	220	63	0	33	37	13	10	0	25	14	0	1	669

Definitions of Release Types

Discretionary parole-Released to parole through Parole Board discretion prior to mandatory release or sentence discharge date.

Mandatory parole-Released to parole on mandatory release date.

Mand. Repar-Reparoled on specific date set by Parole Board (includes S.B. 252 reparoles). n/a - breakout not available prior to June 2004.

Com. Supv.-Released to serve 12 months of community supervision.

Sentence discharge-Completion of sentence with no further supervision.

H.B. 1087 discharge-Completion of sentence with no further supervision, subject to earn time provisions of H.B. 95-1087.

Martin/ Cooper discharge-Completion of sentence with no further supervision, sex offender subject to Martin/Cooper Supreme Court decision.

Chgs/ Det. discharge-Completion of sentence, released to other law enforcement for pending charges or detainees.

Com. Spv. Elim discharge-Completion of sentence following reincarceration on community supervision sentence.

Probation-Released by court to probation.

Ct. Ord. Dsch.-Released by court order.

Appeal Bond-Released by court to appeal bond.

Deceased-Offender death in prison.

***Due to the decrease in community transportation services, the Department implemented a procedural change in December 2005 with regards to releasing inmates on weekends. As a result of this change, discretionary releases have increased and mandatory releases have decreased.**

COLORADO DEPARTMENT OF CORRECTIONS
ADULT INMATE RELEASES FROM PRISON
Female Population Only

Date: 2/5/2008

	Parole				Discharge					Other				Total
	Discretionary*	Mandatory*	Mand. Repar.*	Com. Supv.	Sentence	H.B. 1087	Martin/Cooper	Chgs/Det.	Com Spv. Elim	Probation	Ct. Ord. Dsch.	Appeal Bond	Deceased	
Jan-08	86	23	12	0	2	7	0	5	0	1	3	0	0	139
Dec-07	73	16	9	0	4	10	0	1	0	1	0	0	0	114
Nov-07	67	21	4	0	4	6	0	2	0	7	1	0	0	112
Oct-07	82	31	14	0	1	7	0	0	0	1	1	0	0	137
Sep-07	54	22	6	0	3	6	0	1	0	1	0	0	0	93
Aug-07	80	22	10	0	5	8	0	1	0	2	4	0	0	132
Jul-07	63	25	21	0	0	6	0	2	0	0	4	0	0	121
Jun-07	67	16	13	0	1	4	1	0	0	1	0	0	0	103
May-07	67	22	19	0	1	6	0	2	0	3	0	0	1	121
Apr-07	65	18	10	0	2	4	1	1	0	2	2	0	0	105
Mar-07	71	21	22	0	5	8	0	0	0	4	0	1	0	132
Feb-07	75	26	9	0	1	7	1	3	0	1	0	0	0	123
Jan-07	89	23	5	0	3	6	0	0	0	1	3	0	2	132
Dec-06	51	19	3	0	3	6	0	0	0	0	0	0	0	82
Nov-06	64	24	8	0	2	3	0	0	0	3	1	0	0	105
Oct-06	53	23	11	0	2	8	0	1	0	0	1	0	0	99
Sep-06	48	32	6	0	0	4	0	3	0	1	0	0	0	94
Aug-06	66	30	15	0	3	8	0	0	0	3	1	0	0	126
Jul-06	40	16	15	0	3	7	0	2	0	2	2	0	0	87
Jun-06	50	19	15	0	5	2	0	3	0	1	1	0	0	96
May-06	48	33	15	0	1	5	0	0	0	1	1	0	0	104
Apr-06	49	22	12	0	6	7	0	1	0	1	1	0	0	99
Mar-06	38	36	13	0	3	5	0	0	0	4	0	0	0	99
Feb-06	52	30	8	0	1	2	0	0	0	2	0	0	0	95

Definitions of Release Types

Discretionary parole-Released to parole through Parole Board discretion prior to mandatory release or sentence discharge date.

Mandatory parole-Released to parole on mandatory release date.

Mand. Repar-Reparoled on specific date set by Parole Board (includes S.B. 252 reparoles). n/a - breakout not available prior to June 2004.

Com. Supv.-Released to serve 12 months of community supervision.

Sentence discharge-Completion of sentence with no further supervision.

H.B. 1087 discharge-Completion of sentence with no further supervision, subject to earn time provisions of H.B. 95-1087.

Martin/ Cooper discharge-Completion of sentence with no further supervision, sex offender subject to Martin/Cooper Supreme Court decision.

Chgs/ Det. discharge-Completion of sentence, released to other law enforcement for pending charges or detainees.

Com. Spv. Elim discharge-Completion of sentence following reincarceration on community supervision sentence.

Probation-Released by court to probation.

Ct. Ord. Dsch.-Released by court order.

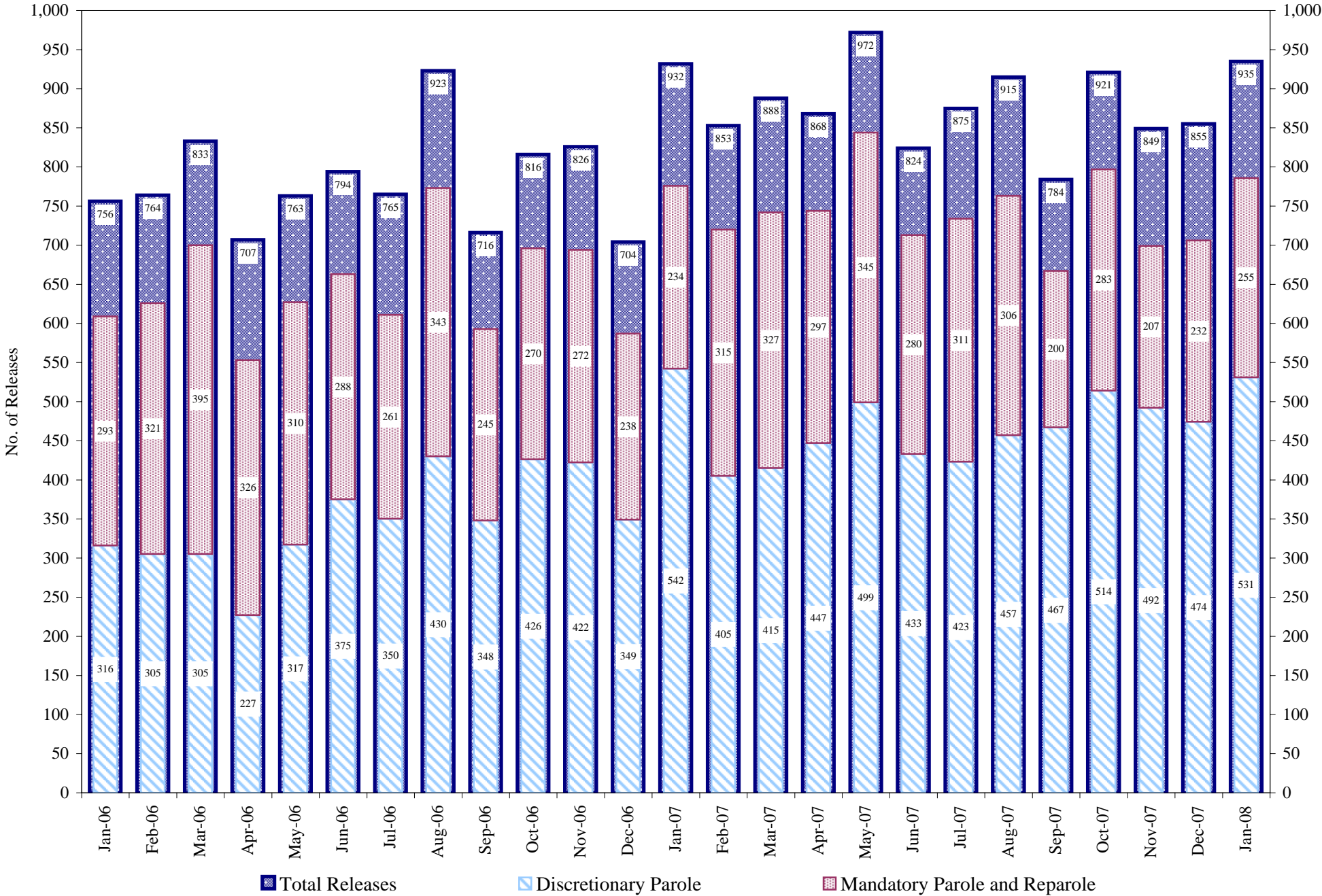
Appeal Bond-Released by court to appeal bond.

Deceased-Offender death in prison.

***Due to the decrease in community transportation services, the Department implemented a procedural change in December 2005 with regards to releasing inmates on weekends. As a result of this change, discretionary releases have increased and mandatory releases have decreased.**

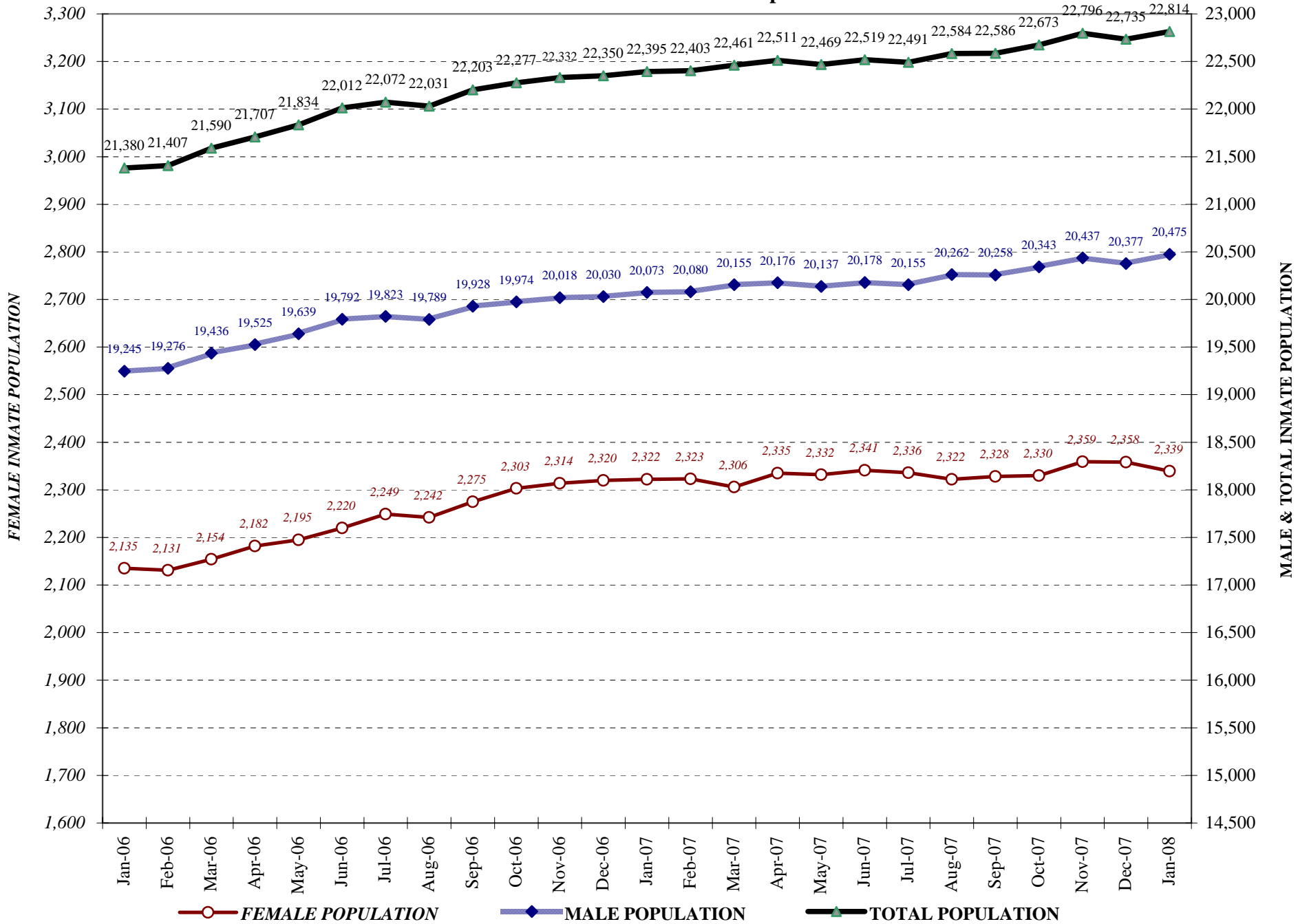
COLORADO DEPARTMENT OF CORRECTIONS

Adult Prison Releases

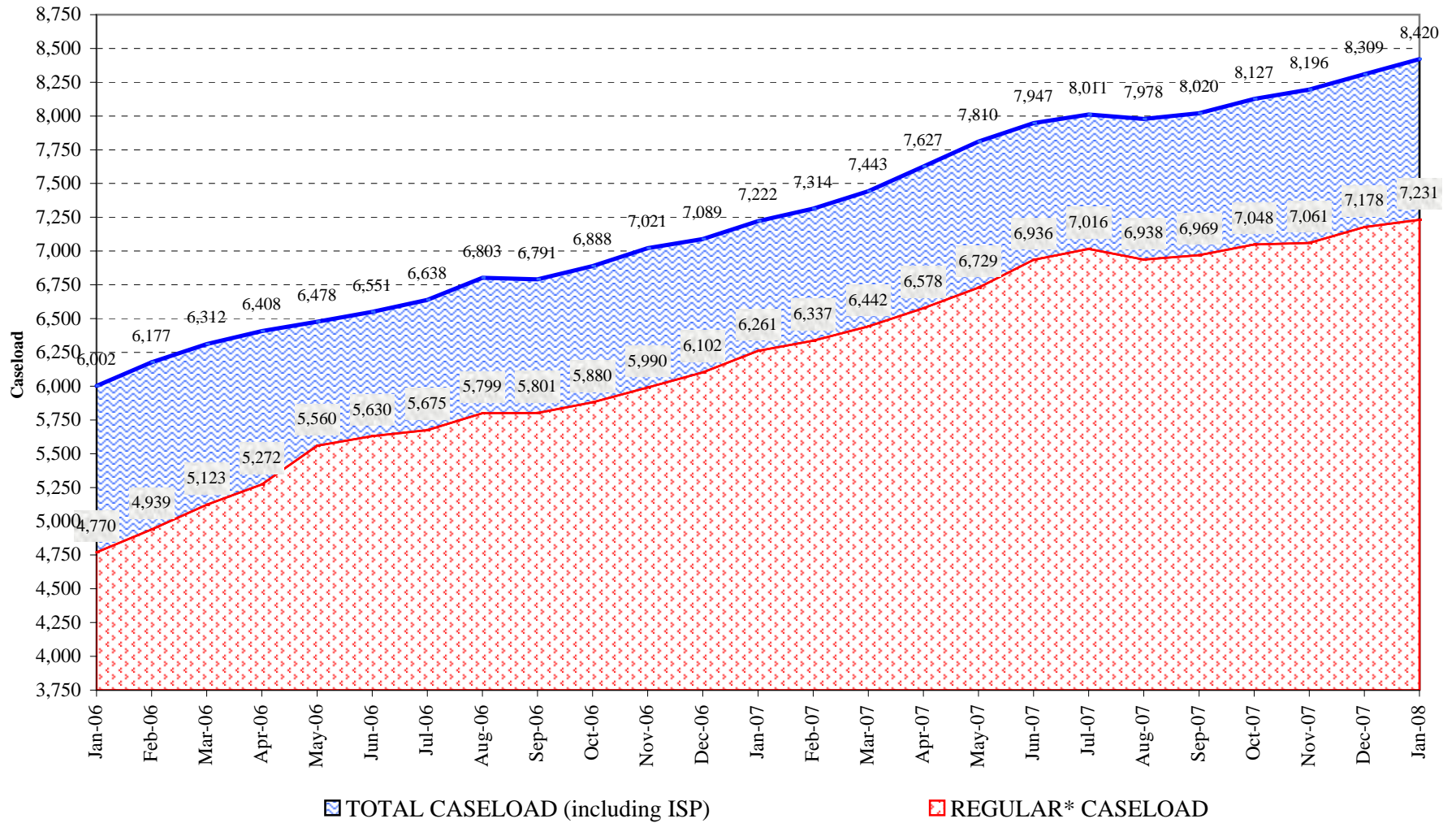


Total releases include releases to discretionary parole, mandatory parole and reparole, all types of discharges and other releases as detailed on the previous page.

COLORADO DEPARTMENT OF CORRECTIONS Adult Jurisdiction Inmate Population



COLORADO DEPARTMENT OF CORRECTIONS Parole Population



* Regular caseload includes interstate parole, but excludes out-of-state parolees and absconders.