

**COLORADO DEPARTMENT OF CORRECTIONS  
MONTHLY POPULATION AND CAPACITY REPORT  
AS OF DECEMBER 31, 2007**

7-Jan-08

	11/30/07	CAPACITY CHANGES	------ 12/31/07 -----		------ 12/31/06 -----	
	OPERATIONAL CAPACITY*		OPERATIONAL CAPACITY*	ON-GRDS POPULATION	OPERATIONAL CAPACITY*	ON-GRDS POPULATION
COLO STATE PENITENTIARY	756		756	738	756	749
CENTENNIAL CORR FAC	336		336	312	336	326
STERLING CORR FAC	2,545		2,545	2,499	2,445	2,397
LIMON CORR FAC	953		953	921	953	946
ARK VALLEY CORR FAC	1,007		1,007	1,002	1,007	991
BUENA VISTA CORR FAC	926		926	889	826	806
BUENA VISTA MIN CTR	292		292	279	292	288
COLO TERR CORR FAC	936		936	893	786	777
FORT LYON CORR FAC	500		500	492	500	476
FREMONT CORR FAC	1,660		1,660	1,660	1,471	1,448
LA VISTA CORR FAC	519		519	480	447	404
ARROWHEAD CORR CTR	494		494	488	494	492
FOUR MILE CORR CTR	499		499	497	499	497
TRINIDAD CORR FAC	484		484	472	484	475
S.T.U. at Y.O.S.	30		30	23	30	30
SKYLINE CORR CTR	249		249	248	249	244
COLORADO CORR CTR	150		150	146	150	148
DELTA CORR CTR	484		484	467	484	471
RIFLE CORR CTR	192		192	190	192	184
COLO CORR ALT PROGRAM	100		100	100	100	107
COLO WOMEN'S CORR FAC	224		224	201	224	218
DENVER WOMEN'S CORR FAC	866		866	784	900	857
DENVER REC DIAG CTR	480		480	424	480	491
SAN CARLOS CORR FAC	255		255	249	255	244
<b>***SUBTOTAL***</b>	<b>14,937</b>	<b>0</b>	<b>14,937</b>	<b>14,454</b>	<b>14,360</b>	<b>14,066</b>
<b>CONTRACTS:</b>						
BENT COUNTY CORR CTR	724		724	621	724	711
HUERFANO COUNTY CORR CTR	774		774	705	774	755
CROWLEY COUNTY CORR FAC	1,720		1,720	1,528	1,754	1,615
KIT CARSON COUNTY CORR FAC	820		820	749	824	798
CHEYENNE MTN REENTRY CTR	500		500	554	500	485
HIGH PLAINS CORR FAC	270		270	244	270	251
NORTH FORK OK CORR FAC	480		480	477	240	240
<b>OFF-GROUNDS POPULATION:</b>						
ESCAPEES/WALKAWAYS				261		245
REVOCATIONS-JAIL				0		0
<b>JAIL BACKLOG:</b>						
BACKLOG LESS THAN 72 HOURS			54		114	
BACKLOG GREATER THAN 72 HOURS (FISCAL YTD AVE = 91			44		203	
BACKLOG-PAROLEES AWAITING TRANSFER			41		80	
<b>TOTAL JAIL BACKLOG</b>				139		397
<b>COUNTY JAIL CONTRACTS</b>				79		38
<b>COMMUNITY CORRECTIONS</b>						
<b>COMMUNITY</b>						
RESIDENTIAL	1,386	-9	1,377	1,377	1,273	1,273
PAROLE REVOCATIONS	0	0	0	0	1	1
REVOKED-RET TO CUST	261	-4	257	257	222	222
NON-RESIDENTIAL	83	7	90	90	86	86
REGRESSIONS	35	18	53	53	61	61
<b>TOTAL COMMUNITY</b>	<b>1,765</b>	<b>12</b>	<b>1,777</b>	<b>1,777</b>	<b>1,643</b>	<b>1,643</b>
<b>ISP</b>						
RESIDENTIAL	904	9	913	913	878	878
NON-RESIDENTIAL	52	-10	42	42	40	40
REGRESSIONS	6	2	8	8	10	10
<b>TOTAL ISP</b>	<b>962</b>	<b>1</b>	<b>963</b>	<b>963</b>	<b>928</b>	<b>928</b>
<b>TOTAL COMM. CORRECTIONS</b>	<b>2,727</b>	<b>13</b>	<b>2,740</b>	<b>2,740</b>	<b>2,571</b>	<b>2,571</b>
MALE POPULATION			<b>20,377</b>		20,030	
FEMALE POPULATION			<b>2,358</b>		2,320	
<b>**TOTAL INMATE JURISDICTIONAL POPULATION**</b>				<b>22,735</b>		<b>22,350</b>

\*OPERATIONAL CAPACITY INCLUDES ALL BEDS AVAILABLE FOR USE, INCLUDING MANAGEMENT CONTROL UNITS, BUT EXCLUDES EMERGENCY DOUBLE BUNKING

**COLORADO DEPARTMENT OF CORRECTIONS**  
**MONTHLY POPULATION AND CAPACITY REPORT**  
**AS OF DECEMBER 31, 2007**

7-Jan-08

**CURRENT MONTH CHANGES IN CAPACITY:**

NONE

**NET MONTHLY GROWTH RATE:**

CURRENT MONTH	-61
FISCAL YEAR-TO-DATE AVERAGE	36

**YOUTHFUL OFFENDER SYSTEM**

	----- 12/31/07 -----			12/31/06
	PUEBLO	CONTRACT FACILITIES	COMM. CORR.	TOTAL POPULATION
INTAKE/IDO	9			2
RFP/REMEDICATION	10			14
PHASE I	145			155
PHASE II	10			5
PHASE III			35	34
OFF GROUNDS/BACKLOG				3
<b>**TOTAL Y.O.S. POPULATION**</b>	<b>174</b>	<b>0</b>	<b>35</b>	<b>213</b>

	CURRENT MONTH	FISCAL YR. TO DATE
YOS ADMISSIONS	5	25
YOS RELEASES:		
COMPLETION OF SENTENCE	3	16
JUDICIAL RELEASE TO PROB/CT ORD DISCHG	0	2
JUDICIAL TRANSFER TO DOC	0	0
TERMINATION/FAILURE	2	6
DECEASED	0	0
TOTAL RELEASES	5	24

**PAROLE CASELOAD**

	----- 12/31/07 -----			----- 11/30/07 -----		----- 12/31/06 -----	
	DOMESTIC	INTERST PAR/PROB	TOTAL CASELOAD	DOMESTIC	TOTAL CASELOAD	DOMESTIC	TOTAL CASELOAD
DENVER REGION							
REGULAR	2,536	113	2,649	2,536	2,648	2,197	218
ISP	513		513	504	504	441	441
SUBTOTAL	3,049	113	3,162	3,040	3,150	2,638	2,746
NORTHEAST REGION							
REGULAR	1,925	47	1,972	1,919	1,878	1,646	1,546
ISP	259		259	248	248	216	216
SUBTOTAL	2,184	47	2,231	2,167	2,213	1,862	1,911
SOUTHEAST REGION							
REGULAR	1,778	96	1,874	1,677	1,747	1,390	1,427
ISP	247		247	270	270	233	233
SUBTOTAL	2,025	96	2,121	1,947	2,038	1,623	1,709
WESTERN REGION							
REGULAR	638	45	683	641	743	587	648
ISP	112		112	113	113	97	97
SUBTOTAL	750	45	795	754	795	684	723
TOTAL CASELOAD							
REGULAR	6,877	301	7,178	6,773	7,061	5,820	6,102
ISP	1,131		1,131	1,135	1,135	987	987
TOTAL	8,008	301	8,309	7,908	8,196	6,807	7,089
ADDITIONAL CASELOAD:							
OUT-OF-STATE PAROLEES			1,889		1,887		1,742
PAROLEE ABSCONDERS			888		888		720

**COLORADO DEPARTMENT OF CORRECTIONS  
MONTHLY POPULATION AND CAPACITY REPORT  
AS OF DECEMBER 31, 2007**

	12/31/2007 Population			----- FINAL CUSTODY DESIGNATION* -----					
	On-Grds.	Off-Grds	Total	Uncls.	Ad.Seg	Close	Medium	Min.-Res.	Minimum
COLO STATE PENITENTIARY	738	2	740			733	3	1	3
CENTENNIAL CORR FAC	312	1	313			1	306	3	1
STERLING CORR FAC	2,499	16	2,515	1	277	750	495	561	431
LIMON CORR FAC	921	7	928			6	680	170	57
ARK VALLEY CORR FAC	1,002	9	1,011			4	452	332	159
BUENA VISTA CORR FAC	889	19	908			9	343	350	138
BUENA VISTA MIN CTR	279	5	284				0	2	211
COLO TERR CORR FAC	893	4	897				197	309	266
FORT LYON CORR FAC	492	4	496				32	200	194
FREMONT CORR FAC	1,660	10	1,670			12	208	457	595
ARROWHEAD CORR CTR	488	0	488					0	304
FOUR MILE CORR CTR	497	3	500				1	2	334
TRINIDAD CORR FAC	472	9	481				1	6	413
S.T.U. at Y.O.S.	23	0	23					6	12
SKYLINE CORR CTR	248	1	249						3
COLORADO CORR CTR	146	0	146						
DELTA CORR CTR	467	3	470					3	7
RIFLE CORR CTR	190	2	192					2	
COLO CORR ALT PROGRAM	96	5	101						6
DENVER REC DIAG CTR	423	11	434	93	8	43	105	137	48
SAN CARLOS CORR FAC	249	5	254			25	109	62	35
CONTRACTS:									
BENT COUNTY CORR CTR	621	8	629			1	5	340	174
HUERFANO COUNTY CORR CTR	705	7	712			2	8	370	198
CROWLEY COUNTY CORR FAC	1,528	22	1,550				1	819	527
KIT CARSON COUNTY CORR FAC	749	11	760				2	415	238
CHEYENNE MTN REENTRY CTR	554	3	557					152	234
NORTH FORK OK CORR FAC	477	0	477				4	205	191
COMMUNITY/ISP	1,807	111	1,918	1			4	35	108
<b>Total Classified Male Population</b>	<b>19,425</b>	<b>278</b>	<b>19,703</b>	<b>95</b>	<b>1,078</b>	<b>3,149</b>	<b>4,841</b>	<b>5,103</b>	<b>5,437</b>
<b>Percent of Total</b>				<b>0.5%</b>	<b>5.5%</b>	<b>16.0%</b>	<b>24.6%</b>	<b>25.9%</b>	<b>27.6%</b>
Unclassified Facilities:									
JAIL BACKLOG/REVOCATIONS	106	0	106						
COUNTY JAIL CONTRACTS	79	0	79						
REVOKED TO JAIL	0	0	0						
REVOKED TO COMM CTR	0	0	0						
REVOKED-RET TO CUST FAC	163	47	210						
COMM/ISP REGRESSIONS	0	59	59						
ESCAPEES/WALKAWAYS	48	172	220						
<b>Total Unclassified Facilities</b>	<b>396</b>	<b>278</b>	<b>674</b>						
<b>Total Male Population</b>	<b>19,821</b>	<b>556</b>	<b>20,377</b>						
COLO WOMEN'S CORR FAC	201	2	203				40	27	59
DENVER WOMEN'S CORR FAC	784	7	791	14	23	118	112	329	195
LA VISTA CORR FAC	480	6	486			67	78	225	116
COLO CORR ALT PROGRAM	4	0	4						1
DENVER REC DIAG CTR INF	1	0	1						1
COLO TERR CORR FAC INF.	0	0	0						
CONTRACTS:									
HIGH PLAINS CORR FAC	244	2	246				2	23	136
COMMUNITY/ISP	483	21	504	1			4	13	50
<b>Total Classified Female Population</b>	<b>2,197</b>	<b>38</b>	<b>2,235</b>	<b>15</b>	<b>23</b>	<b>231</b>	<b>253</b>	<b>801</b>	<b>912</b>
<b>Percent of Total</b>				<b>0.7%</b>	<b>1.0%</b>	<b>10.3%</b>	<b>11.3%</b>	<b>35.8%</b>	<b>40.8%</b>
Unclassified Facilities:									
JAIL BACKLOG	33	0	33						
COUNTY JAIL CONTRACTS	0	0	0						
REVOKED TO JAIL	0	0	0						
REVOKED TO COMM CTR	0	0	0						
REVOKED-RET TO CUST FAC	39	8	47						
COMM/ISP REGRESSIONS	0	2	2						
ESCAPEES/WALKAWAYS	1	40	41						
<b>Total Unclassified Facilities</b>	<b>73</b>	<b>50</b>	<b>123</b>						
<b>Total Female Population</b>	<b>2,270</b>	<b>88</b>	<b>2,358</b>						

**COLORADO DEPARTMENT OF CORRECTIONS**  
**ADULT INMATE JURISDICTIONAL POPULATION (1)**

DATE: 1/7/2008

DATE	MALE POPULATION			FEMALE POPULATION			TOTAL POPULATION		
	Male Population	Net Change	Fiscal Y-T-D Average	Female Population	Net Change	Fiscal Y-T-D Average	Total Population	Net Change	Fiscal Y-T-D Average
<b>12-31-07</b>	<b>20,377</b>	-60	<b>33</b>	<b>2,358</b>	-1	<b>3</b>	<b>22,735</b>	-61	<b>36</b>
11-30-07	20,437	94		2,359	29		22,796	123	
10-31-07	20,343	85		2,330	2		22,673	87	
09-30-07	20,258	-4		2,328	6		22,586	2	
08-31-07	20,262	107		2,322	-14		22,584	93	
07-31-07	20,155	-23		2,336	-5		22,491	-28	
<b>06-30-07</b>	<b>20,178</b>	41		<b>2,341</b>	9		<b>22,519</b>	50	
05-31-07	20,137	-39		2,332	-3		22,469	-42	
04-30-07	20,176	21		2,335	29		22,511	50	
03-31-07	20,155	75		2,306	-17		22,461	58	
02-28-07	20,080	7		2,323	1		22,403	8	
01-31-07	20,073	43		2,322	2		22,395	45	
12-31-06	20,030	12	<b>32</b>	2,320	6	<b>10</b>	22,350	18	<b>42</b>
11-30-06	20,018	44		2,314	11		22,332	55	
10-31-06	19,974	46		2,303	28		22,277	74	
09-30-06	19,928	139		2,275	33		22,203	172	
08-31-06	19,789	-34		2,242	-7		22,031	-41	
07-31-06	19,823	31		2,249	29		22,072	60	
<b>06-30-06</b>	<b>19,792</b>	153		<b>2,220</b>	25		<b>22,012</b>	178	
05-31-06	19,639	114		2,195	13		21,834	127	
04-30-06	19,525	89		2,182	28		21,707	117	
03-31-06	19,436	160		2,154	23		21,590	183	
02-28-06	19,276	31		2,131	-4		21,407	27	
01-31-06	19,245	53		2,135	-9		21,380	44	
12-31-05	19,192	117	<b>97</b>	2,144	7	<b>12</b>	21,336	124	<b>109</b>
11-30-05	19,075	32		2,137	9		21,212	41	
10-31-05	19,043	43		2,128	13		21,171	56	
09-30-05	19,000	71		2,115	-7		21,115	64	
08-31-05	18,929	183		2,122	19		21,051	202	
07-31-05	18,746	115		2,103	30		20,849	145	
<b>06-30-05</b>	<b>18,631</b>		<b>68</b>	<b>2,073</b>		<b>27</b>	<b>20,704</b>		<b>95</b>
<b>06-30-04</b>	<b>17,814</b>		<b>49</b>	<b>1,755</b>		<b>11</b>	<b>19,569</b>		<b>60</b>
<b>06-30-03</b>	<b>17,226</b>		<b>57</b>	<b>1,620</b>		<b>10</b>	<b>18,846</b>		<b>67</b>
<b>06-30-02</b>	<b>16,539</b>		<b>87</b>	<b>1,506</b>		<b>14</b>	<b>18,045</b>		<b>101</b>
<b>06-30-01</b>	<b>15,493</b>		<b>63</b>	<b>1,340</b>		<b>6</b>	<b>16,833</b>		<b>70</b>
<b>06-30-00</b>	<b>14,733</b>		<b>99</b>	<b>1,266</b>		<b>7</b>	<b>15,999</b>		<b>106</b>
<b>06-30-99</b>	<b>13,547</b>		<b>75</b>	<b>1,179</b>		<b>14</b>	<b>14,726</b>		<b>89</b>
<b>06-30-98</b>	<b>12,647</b>		<b>81</b>	<b>1,016</b>		<b>9</b>	<b>13,663</b>		<b>89</b>
<b>06-30-97</b>	<b>11,681</b>			<b>909</b>			<b>12,590</b>		

(1) Adult inmate jurisdictional population includes on-grounds, off-grounds, out-of-state, escapees, and jail backlog and excludes offenders sentenced to the Youthful Offender System (Y.O.S.).

**COLORADO DEPARTMENT OF CORRECTIONS**  
**ADULT INMATE RELEASES FROM PRISON**  
**TOTAL Population (Male and Female)**

Date: 1/7/2008

	Parole				Discharge					Other				Total
	Discretionary*	Mandatory*	Mand. Repar.*	Com. Supv.	Sentence	H.B. 1087	Martin/Cooper	Chgs/Det.	Com Spv. Elim	Probation	Ct. Ord. Dsch.	Appeal Bond	Deceased	
Dec-07	474	157	75	0	35	55	10	17	0	17	7	0	8	855
Nov-07	492	154	53	0	29	56	11	16	0	21	14	0	3	849
Oct-07	514	185	98	0	24	55	11	12	0	12	8	0	2	921
Sep-07	467	153	47	0	39	41	6	9	0	5	13	1	3	784
Aug-07	457	192	114	0	34	54	8	21	0	16	14	0	5	915
Jul-07	423	196	115	0	34	58	6	22	0	7	10	0	4	875
Jun-07	433	188	92	0	19	49	13	11	0	9	8	0	2	824
May-07	499	216	129	0	31	43	7	20	0	14	9	0	4	972
Apr-07	447	197	100	0	26	51	9	16	0	6	10	0	6	868
Mar-07	415	187	140	0	33	64	4	14	0	14	13	1	3	888
Feb-07	405	235	80	0	24	58	12	19	0	15	5	0	0	853
Jan-07	542	192	42	0	37	59	5	15	0	15	16	0	9	932
Dec-06	349	179	59	0	27	44	10	14	0	13	6	1	2	704
Nov-06	422	202	70	0	30	45	12	12	0	16	11	0	6	826
Oct-06	426	186	84	0	36	44	11	10	0	6	7	1	5	816
Sep-06	348	180	65	0	29	44	13	15	0	13	7	0	2	716
Aug-06	430	239	104	0	37	52	10	21	0	17	11	0	2	923
Jul-06	350	174	87	0	43	52	9	20	0	17	6	0	7	765
Jun-06	375	199	89	0	37	43	10	16	0	16	7	0	2	794
May-06	317	235	75	0	34	52	10	15	0	13	9	0	3	763
Apr-06	227	235	91	0	41	54	17	17	0	10	7	0	8	707
Mar-06	305	282	113	0	39	46	10	12	0	18	5	1	2	833
Feb-06	305	250	71	0	34	39	13	10	0	27	14	0	1	764
Jan-06	316	218	75	0	45	51	11	14	0	13	6	0	7	756

Definitions of Release Types

**Discretionary parole**-Released to parole through Parole Board discretion prior to mandatory release or sentence discharge date.

**Mandatory parole**-Released to parole on mandatory release date.

**Mand. Repar**-Reparoled on specific date set by Parole Board (includes S.B. 252 reparoles). n/a - breakout not available prior to June 2004.

**Com. Supv.**-Released to serve 12 months of community supervision.

**Sentence discharge**-Completion of sentence with no further supervision.

**H.B. 1087 discharge**-Completion of sentence with no further supervision, subject to earn time provisions of H.B. 95-1087.

**Martin/ Cooper discharge**-Completion of sentence with no further supervision, sex offender subject to Martin/Cooper Supreme Court decision.

**Chgs/ Det. discharge**-Completion of sentence, released to other law enforcement for pending charges or detainees.

**Com. Spv. Elim discharge**-Completion of sentence following reincarceration on community supervision sentence.

**Probation**-Released by court to probation.

**Ct. Ord. Dsch.**-Released by court order.

**Appeal Bond**-Released by court to appeal bond.

**Deceased**-Offender death in prison.

**\*Due to the decrease in community transportation services, the Department implemented a procedural change in December 2005 with regards to releasing inmates on weekends. As a result of this change, discretionary releases have increased and mandatory releases have decreased.**

**COLORADO DEPARTMENT OF CORRECTIONS**  
**ADULT INMATE RELEASES FROM PRISON**  
**Male Population Only**

Date: 1/7/2008

	Parole				Discharge					Other				Total
	Discretionary*	Mandatory*	Mand. Repar.*	Com. Supv.	Sentence	H.B. 1087	Martin/Cooper	Chgs/Det.	Com Spv. Elim	Probation	Ct. Ord. Dsch.	Appeal Bond	Deceased	
Dec-07	401	141	66	0	31	45	10	16	0	16	7	0	8	741
Nov-07	425	133	49	0	25	50	11	14	0	14	13	0	3	737
Oct-07	432	154	84	0	23	48	11	12	0	11	7	0	2	784
Sep-07	413	131	41	0	36	35	6	8	0	4	13	1	3	691
Aug-07	377	170	104	0	29	46	8	20	0	14	10	0	5	783
Jul-07	360	171	94	0	34	52	6	20	0	7	6	0	4	754
Jun-07	366	172	79	0	18	45	12	11	0	8	8	0	2	721
May-07	432	194	110	0	30	37	7	18	0	11	9	0	3	851
Apr-07	382	179	90	0	24	47	8	15	0	4	8	0	6	763
Mar-07	344	166	118	0	28	56	4	14	0	10	13	0	3	756
Feb-07	330	209	71	0	23	51	11	16	0	14	5	0	0	730
Jan-07	453	169	37	0	34	53	5	15	0	14	13	0	7	800
Dec-06	298	160	56	0	24	38	10	14	0	13	6	1	2	622
Nov-06	358	178	62	0	28	42	12	12	0	13	10	0	6	721
Oct-06	373	163	73	0	34	36	11	9	0	6	6	1	5	717
Sep-06	300	148	59	0	29	40	13	12	0	12	7	0	2	622
Aug-06	364	209	89	0	34	44	10	21	0	14	10	0	2	797
Jul-06	310	158	72	0	40	45	9	18	0	15	4	0	7	678
Jun-06	325	180	74	0	32	41	10	13	0	15	6	0	2	698
May-06	269	202	60	0	33	47	10	15	0	12	8	0	3	659
Apr-06	178	213	79	0	35	47	17	16	0	9	6	0	8	608
Mar-06	267	246	100	0	36	41	10	12	0	14	5	1	2	734
Feb-06	253	220	63	0	33	37	13	10	0	25	14	0	1	669
Jan-06	266	187	63	0	43	48	11	13	0	12	5	0	6	654

**Definitions of Release Types**

**Discretionary parole**-Released to parole through Parole Board discretion prior to mandatory release or sentence discharge date.

**Mandatory parole**-Released to parole on mandatory release date.

**Mand. Repar**-Reparoled on specific date set by Parole Board (includes S.B. 252 reparoles). n/a - breakout not available prior to June 2004.

**Com. Supv.**-Released to serve 12 months of community supervision.

**Sentence discharge**-Completion of sentence with no further supervision.

**H.B. 1087 discharge**-Completion of sentence with no further supervision, subject to earn time provisions of H.B. 95-1087.

**Martin/ Cooper discharge**-Completion of sentence with no further supervision, sex offender subject to Martin/Cooper Supreme Court decision.

**Chgs/ Det. discharge**-Completion of sentence, released to other law enforcement for pending charges or detainees.

**Com. Spv. Elim discharge**-Completion of sentence following reincarceration on community supervision sentence.

**Probation**-Released by court to probation.

**Ct. Ord. Dsch.**-Released by court order.

**Appeal Bond**-Released by court to appeal bond.

**Deceased**-Offender death in prison.

**\*Due to the decrease in community transportation services, the Department implemented a procedural change in December 2005 with regards to releasing inmates on weekends. As a result of this change, discretionary releases have increased and mandatory releases have decreased.**

**COLORADO DEPARTMENT OF CORRECTIONS**  
**ADULT INMATE RELEASES FROM PRISON**  
**Female Population Only**

Date: 1/7/2008

	Parole				Discharge					Other				Total
	Discretionary*	Mandatory*	Mand. Repar.*	Com. Supv.	Sentence	H.B. 1087	Martin/Cooper	Chgs/Det.	Com Spv. Elim.	Probation	Ct. Ord. Dsch.	Appeal Bond	Deceased	
Dec-07	73	16	9	0	4	10	0	1	0	1	0	0	0	114
Nov-07	67	21	4	0	4	6	0	2	0	7	1	0	0	112
Oct-07	82	31	14	0	1	7	0	0	0	1	1	0	0	137
Sep-07	54	22	6	0	3	6	0	1	0	1	0	0	0	93
Aug-07	80	22	10	0	5	8	0	1	0	2	4	0	0	132
Jul-07	63	25	21	0	0	6	0	2	0	0	4	0	0	121
Jun-07	67	16	13	0	1	4	1	0	0	1	0	0	0	103
May-07	67	22	19	0	1	6	0	2	0	3	0	0	1	121
Apr-07	65	18	10	0	2	4	1	1	0	2	2	0	0	105
Mar-07	71	21	22	0	5	8	0	0	0	4	0	1	0	132
Feb-07	75	26	9	0	1	7	1	3	0	1	0	0	0	123
Jan-07	89	23	5	0	3	6	0	0	0	1	3	0	2	132
Dec-06	51	19	3	0	3	6	0	0	0	0	0	0	0	82
Nov-06	64	24	8	0	2	3	0	0	0	3	1	0	0	105
Oct-06	53	23	11	0	2	8	0	1	0	0	1	0	0	99
Sep-06	48	32	6	0	0	4	0	3	0	1	0	0	0	94
Aug-06	66	30	15	0	3	8	0	0	0	3	1	0	0	126
Jul-06	40	16	15	0	3	7	0	2	0	2	2	0	0	87
Jun-06	50	19	15	0	5	2	0	3	0	1	1	0	0	96
May-06	48	33	15	0	1	5	0	0	0	1	1	0	0	104
Apr-06	49	22	12	0	6	7	0	1	0	1	1	0	0	99
Mar-06	38	36	13	0	3	5	0	0	0	4	0	0	0	99
Feb-06	52	30	8	0	1	2	0	0	0	2	0	0	0	95
Jan-06	50	31	12	0	2	3	0	1	0	1	1	0	1	102

Definitions of Release Types

**Discretionary parole**-Released to parole through Parole Board discretion prior to mandatory release or sentence discharge date.

**Mandatory parole**-Released to parole on mandatory release date.

**Mand. Repar**-Reparoled on specific date set by Parole Board (includes S.B. 252 reparoles). n/a - breakout not available prior to June 2004.

**Com. Supv.**-Released to serve 12 months of community supervision.

**Sentence discharge**-Completion of sentence with no further supervision.

**H.B. 1087 discharge**-Completion of sentence with no further supervision, subject to earn time provisions of H.B. 95-1087.

**Martin/ Cooper discharge**-Completion of sentence with no further supervision, sex offender subject to Martin/Cooper Supreme Court decision.

**Chgs/ Det. discharge**-Completion of sentence, released to other law enforcement for pending charges or detainees.

**Com. Spv. Elim discharge**-Completion of sentence following reincarceration on community supervision sentence.

**Probation**-Released by court to probation.

**Ct. Ord. Dsch.**-Released by court order.

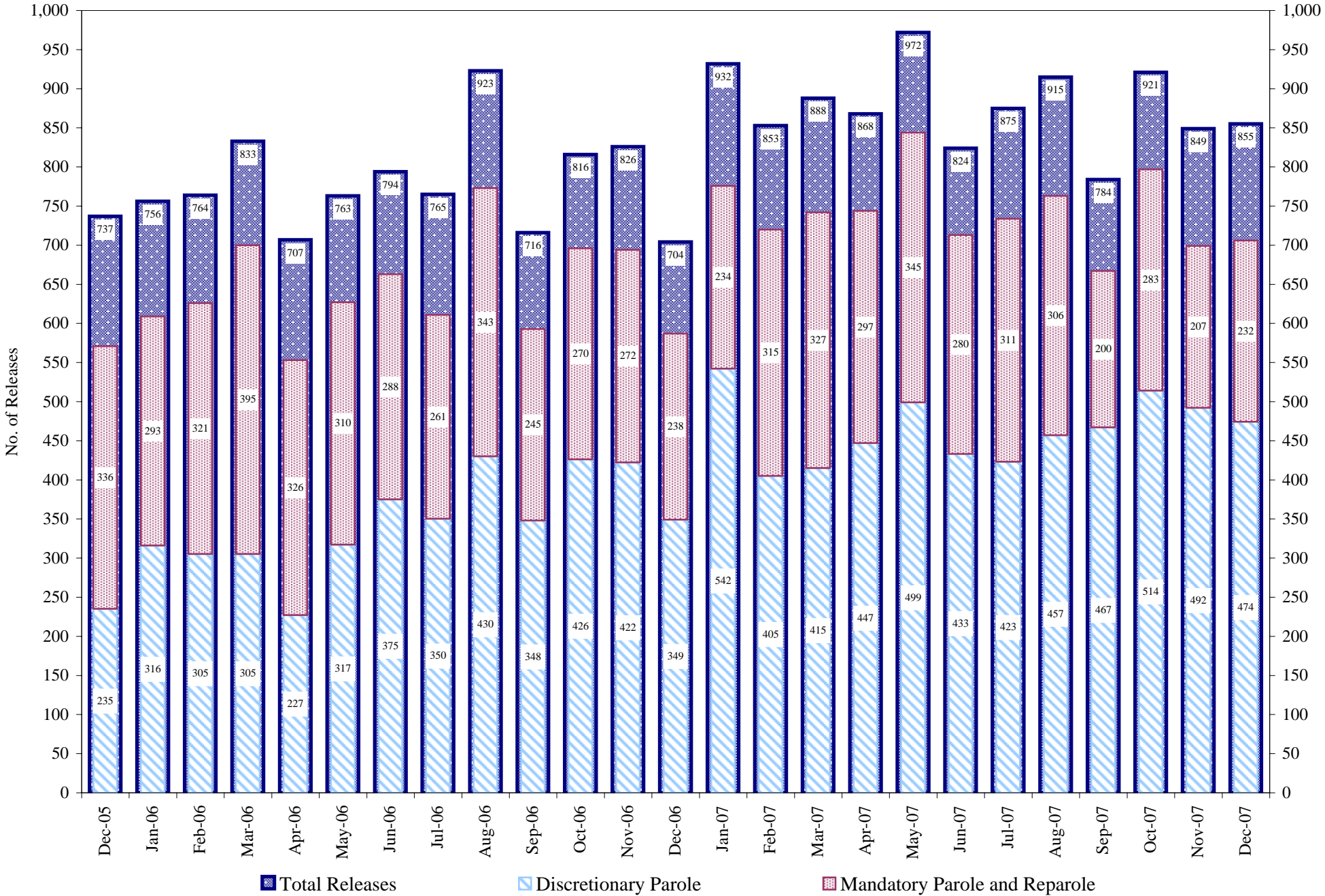
**Appeal Bond**-Released by court to appeal bond.

**Deceased**-Offender death in prison.

\*Due to the decrease in community transportation services, the Department implemented a procedural change in December 2005 with regards to releasing inmates on weekends. As a result of this change, discretionary releases have increased and mandatory releases have decreased.

# COLORADO DEPARTMENT OF CORRECTIONS

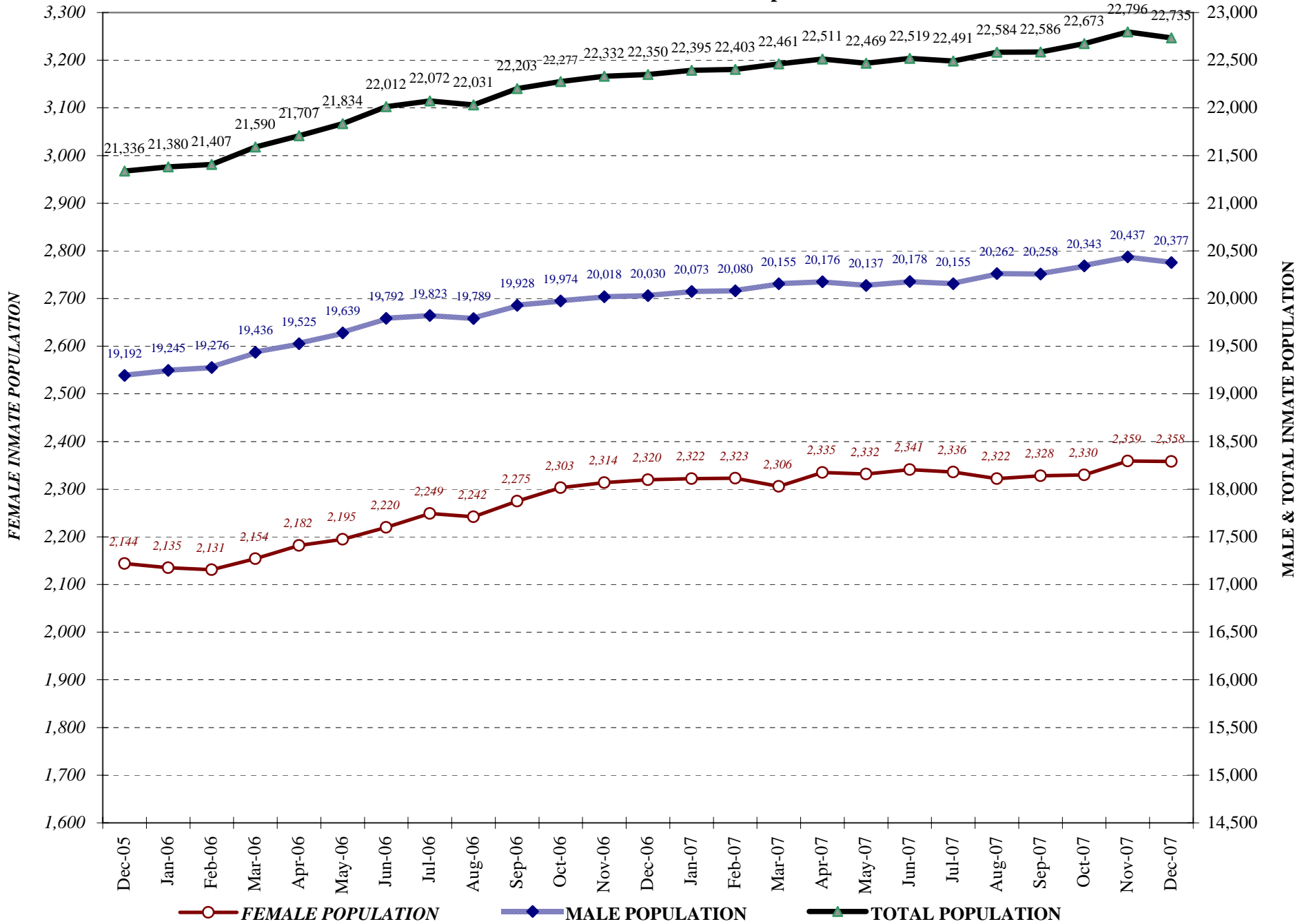
## Adult Prison Releases



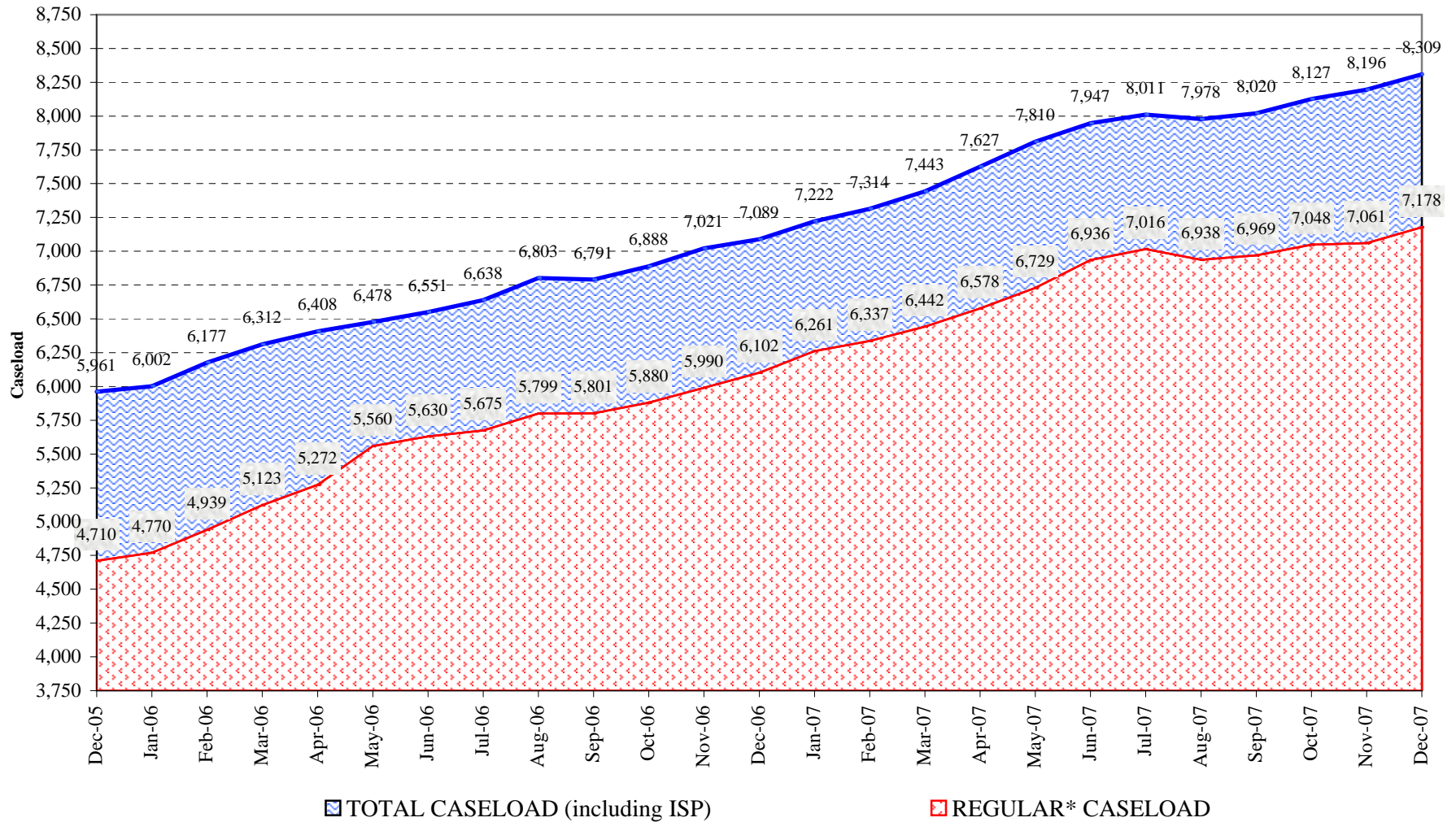
Total releases include releases to discretionary parole, mandatory parole and reparole, all types of discharges and other releases as detailed on the previous page.



## COLORADO DEPARTMENT OF CORRECTIONS Adult Jurisdiction Inmate Population



## COLORADO DEPARTMENT OF CORRECTIONS Parole Population



\* Regular caseload includes interstate parole, but excludes out-of-state parolees and absconders.