

**COLORADO DEPARTMENT OF CORRECTIONS
MONTHLY POPULATION AND CAPACITY REPORT
AS OF NOVEMBER 30, 2007**

4-Dec-07

	10/31/07	CAPACITY CHANGES	----- 11/30/07 -----		----- 11/30/06 -----	
	OPERATIONAL CAPACITY*		OPERATIONAL CAPACITY*	ON-GRDS POPULATION	OPERATIONAL CAPACITY*	ON-GRDS POPULATION
COLO STATE PENITENTIARY	756		756	754	756	746
CENTENNIAL CORR FAC	336		336	313	336	328
STERLING CORR FAC	2,545		2,545	2,503	2,445	2,410
LIMON CORR FAC	953		953	906	953	947
ARK VALLEY CORR FAC	1,007		1,007	997	1,007	1,004
BUENA VISTA CORR FAC	926		926	882	826	824
BUENA VISTA MIN CTR	292		292	278	292	288
COLO TERR CORR FAC	936		936	914	786	792
FORT LYON CORR FAC	500		500	486	500	484
FREMONT CORR FAC	1,660		1,660	1,544	1,471	1,465
LA VISTA CORR FAC	519		519	464	375	352
ARROWHEAD CORR CTR	494		494	484	494	489
FOUR MILE CORR CTR	499		499	493	499	495
TRINIDAD CORR FAC	484		484	473	484	480
S.T.U. at Y.O.S.	30		30	14	30	30
SKYLINE CORR CTR	249		249	238	249	249
COLORADO CORR CTR	150		150	150	150	149
DELTA CORR CTR	484		484	469	484	472
RIFLE CORR CTR	192		192	183	192	189
COLO CORR ALT PROGRAM	100		100	95	100	118
COLO WOMEN'S CORR FAC	224		224	203	224	220
DENVER WOMEN'S CORR FAC	866		866	774	900	875
DENVER REC DIAG CTR	480		480	471	480	482
SAN CARLOS CORR FAC	255		255	250	255	246
SUBTOTAL	14,937	0	14,937	14,338	14,288	14,134
CONTRACTS:						
BENT COUNTY CORR CTR	724		724	691	724	709
HUERFANO COUNTY CORR CTR	774		774	700	774	769
CROWLEY COUNTY CORR FAC	1,720		1,720	1,575	1,754	1,660
KIT CARSON COUNTY CORR FAC	820		820	745	824	801
CHEYENNE MTN REENTRY CTR	500		500	519	500	476
HIGH PLAINS CORR FAC	270		270	232	270	255
NORTH FORK OK CORR FAC	480		480	478	0	0
OFF-GROUNDS POPULATION:				269		227
ESCAPEES/WALKAWAYS				242		249
REVOCATIONS-JAIL				1		0
JAIL BACKLOG:						
BACKLOG LESS THAN 72 HOURS			124		111	
BACKLOG GREATER THAN 72 HOURS (FISCAL YTD AVE = 82)			22		246	
BACKLOG-PAROLEES AWAITING TRANSFER			50		68	
TOTAL JAIL BACKLOG				196		425
COUNTY JAIL CONTRACTS				83		43
COMMUNITY CORRECTIONS						
COMMUNITY						
RESIDENTIAL	1,394	-8	1,386	1,386	1,280	1,280
PAROLE REVOCATIONS	0	0	0	0	0	0
REVOKED-RET TO CUST	256	5	261	261	221	221
NON-RESIDENTIAL	83	0	83	83	71	71
REGRESSIONS	40	-5	35	35	107	107
TOTAL COMMUNITY	1,773	-8	1,765	1,765	1,679	1,679
ISP						
RESIDENTIAL	891	13	904	904	847	847
NON-RESIDENTIAL	38	14	52	52	41	41
REGRESSIONS	5	1	6	6	17	17
TOTAL ISP	934	28	962	962	905	905
TOTAL COMM. CORRECTIONS	2,707	20	2,727	2,727	2,584	2,584
MALE POPULATION			20,437		20,018	
FEMALE POPULATION			2,359		2,314	
TOTAL INMATE JURISDICTIONAL POPULATION				22,796		22,332

*OPERATIONAL CAPACITY INCLUDES ALL BEDS AVAILABLE FOR USE, INCLUDING MANAGEMENT CONTROL UNITS, BUT EXCLUDES EMERGENCY DOUBLE BUNKING

COLORADO DEPARTMENT OF CORRECTIONS
MONTHLY POPULATION AND CAPACITY REPORT
AS OF NOVEMBER 30, 2007

4-Dec-07

CURRENT MONTH CHANGES IN CAPACITY:

NONE

NET MONTHLY GROWTH RATE:

CURRENT MONTH	123
FISCAL YEAR-TO-DATE AVERAGE	55

YOUTHFUL OFFENDER SYSTEM

	----- 11/30/07 -----			11/30/06
	PUEBLO	CONTRACT FACILITIES	COMM. CORR.	TOTAL POPULATION
INTAKE/IDO	7			5
RFP/REMEDICATION	12			10
PHASE I	141			155
PHASE II	16			11
PHASE III			31	31
OFF GROUNDS/BACKLOG				2
TOTAL Y.O.S. POPULATION	176	0	31	214

	CURRENT MONTH	FISCAL YR. TO DATE
YOS ADMISSIONS	5	20
YOS RELEASES:		
COMPLETION OF SENTENCE	4	13
JUDICIAL RELEASE TO PROB/CT ORD DISCHG	0	2
JUDICIAL TRANSFER TO DOC	0	0
TERMINATION/FAILURE	0	4
DECEASED	0	0
TOTAL RELEASES	4	19

PAROLE CASELOAD

	----- 11/30/07 -----			----- 10/31/07 -----		----- 11/30/06 -----	
	DOMESTIC	INTERST PAR/PROB	TOTAL CASELOAD	DOMESTIC	TOTAL CASELOAD	DOMESTIC	TOTAL CASELOAD
DENVER REGION							
REGULAR	2,536	110	2,646	2,544	2,648	2,142	218
ISP	504		504	456	456	488	488
SUBTOTAL	3,040	110	3,150	3,000	3,112	2,630	2,739
NORTHEAST REGION							
REGULAR	1,919	46	1,965	1,904	1,878	1,624	1,546
ISP	248		248	239	239	226	226
SUBTOTAL	2,167	46	2,213	2,143	2,189	1,850	1,897
SOUTHEAST REGION							
REGULAR	1,677	91	1,768	1,670	1,747	1,351	1,427
ISP	270		270	274	274	228	228
SUBTOTAL	1,947	91	2,038	1,944	2,035	1,579	1,664
WESTERN REGION							
REGULAR	641	41	682	641	743	589	648
ISP	113		113	110	110	89	89
SUBTOTAL	754	41	795	751	791	678	721
TOTAL CASELOAD							
REGULAR	6,773	288	7,061	6,759	7,048	5,706	5,990
ISP	1,135		1,135	1,079	1,079	1,031	1,031
TOTAL	7,908	288	8,196	7,838	8,127	6,737	7,021
ADDITIONAL CASELOAD:							
OUT-OF-STATE PAROLEES			1,887		1,867		1,739
PAROLEE ABSCONDERS			888		864		719

**COLORADO DEPARTMENT OF CORRECTIONS
MONTHLY POPULATION AND CAPACITY REPORT
AS OF NOVEMBER 30, 2007**

	11/30/2007 Population			----- FINAL CUSTODY DESIGNATION* -----					
	On-Grds.	Off-Grds	Total	Uncls.	Ad.Seg	Close	Medium	Min.-Res.	Minimum
COLO STATE PENITENTIARY	754	3	757		754	2		1	
CENTENNIAL CORR FAC	313	0	313		2	277	10	12	12
STERLING CORR FAC	2,503	36	2,539		278	748	499	561	453
LIMON CORR FAC	906	9	915		1	655	183	59	17
ARK VALLEY CORR FAC	997	13	1,010		7	465	310	163	65
BUENA VISTA CORR FAC	882	25	907		14	343	345	132	73
BUENA VISTA MIN CTR	278	6	284		0	0	0	213	71
COLO TERR CORR FAC	913	4	917	1	4	200	302	279	131
FORT LYON CORR FAC	486	4	490		0	33	199	185	73
FREMONT CORR FAC	1,544	15	1,559		13	193	410	561	382
ARROWHEAD CORR CTR	484	4	488			0	2	297	189
FOUR MILE CORR CTR	493	6	499			1	0	336	162
TRINIDAD CORR FAC	473	6	479				0	411	68
S.T.U. at Y.O.S.	14	0	14				6	8	
SKYLINE CORR CTR	238	3	241						241
COLORADO CORR CTR	150	0	150						150
DELTA CORR CTR	469	8	477				2	2	473
RIFLE CORR CTR	183	1	184						184
COLO CORR ALT PROGRAM	88	5	93					10	83
DENVER REC DIAG CTR	470	15	485	170	10	36	112	108	49
SAN CARLOS CORR FAC	250	5	255		25	110	60	38	22
CONTRACTS:									
BENT COUNTY CORR CTR	691	8	699			4	379	205	111
HUERFANO COUNTY CORR CTR	700	11	711		4	11	378	182	136
CROWLEY COUNTY CORR FAC	1,575	35	1,610		3	1	825	552	229
KIT CARSON COUNTY CORR FAC	745	18	763		2	5	412	238	106
CHEYENNE MTN REENTRY CTR	519	1	520			1	130	217	172
NORTH FORK OK CORR FAC	478	0	478			5	205	195	73
COMMUNITY/ISP	1,798	118	1,916			9	43	104	1,760
Total Classified Male Population	19,394	359	19,753	171	1,117	3,099	4,812	5,069	5,485
Percent of Total				0.9%	5.7%	15.7%	24.4%	25.7%	27.8%
Unclassified Facilities:									
JAIL BACKLOG/REVOCATIONS	139	0	139						
COUNTY JAIL CONTRACTS	83	0	83						
REVOKED TO JAIL	0	0	0						
REVOKED TO COMM CTR	0	0	0						
REVOKED-RET TO CUST FAC	160	57	217						
COMM/ISP REGRESSIONS	0	36	36						
ESCAPEES/WALKAWAYS	44	165	209						
Total Unclassified Facilities	426	258	684						
Total Male Population	19,820	617	20,437						
COLO WOMEN'S CORR FAC	203	1	204			37	27	68	72
DENVER WOMEN'S CORR FAC	774	8	782	11	23	122	103	328	195
LA VISTA CORR FAC	464	11	475			69	85	201	120
COLO CORR ALT PROGRAM	7	0	7					2	5
DENVER REC DIAG CTR INF	1	1	2					2	
COLO TERR CORR FAC INF.	1	0	1						1
CONTRACTS:									
HIGH PLAINS CORR FAC	232	7	239			1	21	140	77
COMMUNITY/ISP	492	17	509			3	13	54	439
Total Classified Female Population	2,174	45	2,219	11	23	232	249	795	909
Percent of Total				0.5%	1.0%	10.5%	11.2%	35.8%	41.0%
Unclassified Facilities:									
JAIL BACKLOG	57	0	57						
COUNTY JAIL CONTRACTS	0	0	0						
REVOKED TO JAIL	1	0	1						
REVOKED TO COMM CTR	0	0	0						
REVOKED-RET TO CUST FAC	41	3	44						
COMM/ISP REGRESSIONS	0	5	5						
ESCAPEES/WALKAWAYS	0	33	33						
Total Unclassified Facilities	99	41	140						
Total Female Population	2,273	86	2,359						

COLORADO DEPARTMENT OF CORRECTIONS
ADULT INMATE JURISDICTIONAL POPULATION (1)

DATE: 12/4/2007

DATE	MALE POPULATION			FEMALE POPULATION			TOTAL POPULATION		
	Male Population	Net Change	Fiscal Y-T-D Average	Female Population	Net Change	Fiscal Y-T-D Average	Total Population	Net Change	Fiscal Y-T-D Average
11-30-07	20,437	94	52	2,359	29	4	22,796	123	55
10-31-07	20,343	85		2,330	2		22,673	87	
09-30-07	20,258	-4		2,328	6		22,586	2	
08-31-07	20,262	107		2,322	-14		22,584	93	
07-31-07	20,155	-23		2,336	-5		22,491	-28	
06-30-07	20,178	41		2,341	9		22,519	50	
05-31-07	20,137	-39		2,332	-3		22,469	-42	
04-30-07	20,176	21		2,335	29		22,511	50	
03-31-07	20,155	75		2,306	-17		22,461	58	
02-28-07	20,080	7		2,323	1		22,403	8	
01-31-07	20,073	43		2,322	2		22,395	45	
12-31-06	20,030	12	32	2,320	6	10	22,350	18	42
11-30-06	20,018	44		2,314	11		22,332	55	
10-31-06	19,974	46		2,303	28		22,277	74	
09-30-06	19,928	139		2,275	33		22,203	172	
08-31-06	19,789	-34		2,242	-7		22,031	-41	
07-31-06	19,823	31		2,249	29		22,072	60	
06-30-06	19,792	153		2,220	25		22,012	178	
05-31-06	19,639	114		2,195	13		21,834	127	
04-30-06	19,525	89		2,182	28		21,707	117	
03-31-06	19,436	160		2,154	23		21,590	183	
02-28-06	19,276	31		2,131	-4		21,407	27	
01-31-06	19,245	53		2,135	-9		21,380	44	
12-31-05	19,192	117	97	2,144	7	12	21,336	124	109
11-30-05	19,075	32		2,137	9		21,212	41	
10-31-05	19,043	43		2,128	13		21,171	56	
09-30-05	19,000	71		2,115	-7		21,115	64	
08-31-05	18,929	183		2,122	19		21,051	202	
07-31-05	18,746	115		2,103	30		20,849	145	
06-30-05	18,631		68	2,073		27	20,704		95
06-30-04	17,814		49	1,755		11	19,569		60
06-30-03	17,226		57	1,620		10	18,846		67
06-30-02	16,539		87	1,506		14	18,045		101
06-30-01	15,493		63	1,340		6	16,833		70
06-30-00	14,733		99	1,266		7	15,999		106
06-30-99	13,547		75	1,179		14	14,726		89
06-30-98	12,647		81	1,016		9	13,663		89
06-30-97	11,681			909			12,590		

(1) Adult inmate jurisdictional population includes on-grounds, off-grounds, out-of-state, escapees, and jail backlog and excludes offenders sentenced to the Youthful Offender System (Y.O.S.).

COLORADO DEPARTMENT OF CORRECTIONS
ADULT INMATE RELEASES FROM PRISON
TOTAL Population (Male and Female)

Date: 12/4/2007

	Parole				Discharge					Other				Total
	Discretionary*	Mandatory*	Mand. Repar.*	Com. Supv.	Sentence	H.B. 1087	Martin/Cooper	Chgs/Det.	Com Spv. Elim	Probation	Ct. Ord. Dsch.	Appeal Bond	Deceased	
Nov-07	492	154	53	0	29	56	11	16	0	21	14	0	3	849
Oct-07	514	185	98	0	24	55	11	12	0	12	8	0	2	921
Sep-07	467	153	47	0	39	41	6	9	0	5	13	1	3	784
Aug-07	457	192	114	0	34	54	8	21	0	16	14	0	5	915
Jul-07	423	196	115	0	34	58	6	22	0	7	10	0	4	875
Jun-07	433	188	92	0	19	49	13	11	0	9	8	0	2	824
May-07	499	216	129	0	31	43	7	20	0	14	9	0	4	972
Apr-07	447	197	100	0	26	51	9	16	0	6	10	0	6	868
Mar-07	415	187	140	0	33	64	4	14	0	14	13	1	3	888
Feb-07	405	235	80	0	24	58	12	19	0	15	5	0	0	853
Jan-07	542	192	42	0	37	59	5	15	0	15	16	0	9	932
Dec-06	349	179	59	0	27	44	10	14	0	13	6	1	2	704
Nov-06	422	202	70	0	30	45	12	12	0	16	11	0	6	826
Oct-06	426	186	84	0	36	44	11	10	0	6	7	1	5	816
Sep-06	348	180	65	0	29	44	13	15	0	13	7	0	2	716
Aug-06	430	239	104	0	37	52	10	21	0	17	11	0	2	923
Jul-06	350	174	87	0	43	52	9	20	0	17	6	0	7	765
Jun-06	375	199	89	0	37	43	10	16	0	16	7	0	2	794
May-06	317	235	75	0	34	52	10	15	0	13	9	0	3	763
Apr-06	227	235	91	0	41	54	17	17	0	10	7	0	8	707
Mar-06	305	282	113	0	39	46	10	12	0	18	5	1	2	833
Feb-06	305	250	71	0	34	39	13	10	0	27	14	0	1	764
Jan-06	316	218	75	0	45	51	11	14	0	13	6	0	7	756
Dec-05	235	238	98	0	51	47	15	17	0	18	12	0	6	737

Definitions of Release Types

Discretionary parole-Released to parole through Parole Board discretion prior to mandatory release or sentence discharge date.

Mandatory parole-Released to parole on mandatory release date.

Mand. Repar-Reparoled on specific date set by Parole Board (includes S.B. 252 reparoles). n/a - breakout not available prior to June 2004.

Com. Supv.-Released to serve 12 months of community supervision.

Sentence discharge-Completion of sentence with no further supervision.

H.B. 1087 discharge-Completion of sentence with no further supervision, subject to earn time provisions of H.B. 95-1087.

Martin/ Cooper discharge-Completion of sentence with no further supervision, sex offender subject to Martin/Cooper Supreme Court decision.

Chgs/ Det. discharge-Completion of sentence, released to other law enforcement for pending charges or detainees.

Com. Spv. Elim discharge-Completion of sentence following reincarceration on community supervision sentence.

Probation-Released by court to probation.

Ct. Ord. Dsch.-Released by court order.

Appeal Bond-Released by court to appeal bond.

Deceased-Offender death in prison.

*Due to the decrease in community transportation services, the Department implemented a procedural change in December 2005 with regards to releasing inmates on weekends. As a result of this change, discretionary releases have increased and mandatory releases have decreased.

COLORADO DEPARTMENT OF CORRECTIONS
ADULT INMATE RELEASES FROM PRISON
Male Population Only

Date: 12/4/2007

	Parole				Discharge					Other				Total
	Discretionary*	Mandatory*	Mand. Repar.*	Com. Supv.	Sentence	H.B. 1087	Martin/Cooper	Chgs/Det.	Com Spv. Elim	Probation	Ct. Ord. Dsch.	Appeal Bond	Deceased	
Nov-07	425	133	49	0	25	50	11	14	0	14	13	0	3	737
Oct-07	432	154	84	0	23	48	11	12	0	11	7	0	2	784
Sep-07	413	131	41	0	36	35	6	8	0	4	13	1	3	691
Aug-07	377	170	104	0	29	46	8	20	0	14	10	0	5	783
Jul-07	360	171	94	0	34	52	6	20	0	7	6	0	4	754
Jun-07	366	172	79	0	18	45	12	11	0	8	8	0	2	721
May-07	432	194	110	0	30	37	7	18	0	11	9	0	3	851
Apr-07	382	179	90	0	24	47	8	15	0	4	8	0	6	763
Mar-07	344	166	118	0	28	56	4	14	0	10	13	0	3	756
Feb-07	330	209	71	0	23	51	11	16	0	14	5	0	0	730
Jan-07	453	169	37	0	34	53	5	15	0	14	13	0	7	800
Dec-06	298	160	56	0	24	38	10	14	0	13	6	1	2	622
Nov-06	358	178	62	0	28	42	12	12	0	13	10	0	6	721
Oct-06	373	163	73	0	34	36	11	9	0	6	6	1	5	717
Sep-06	300	148	59	0	29	40	13	12	0	12	7	0	2	622
Aug-06	364	209	89	0	34	44	10	21	0	14	10	0	2	797
Jul-06	310	158	72	0	40	45	9	18	0	15	4	0	7	678
Jun-06	325	180	74	0	32	41	10	13	0	15	6	0	2	698
May-06	269	202	60	0	33	47	10	15	0	12	8	0	3	659
Apr-06	178	213	79	0	35	47	17	16	0	9	6	0	8	608
Mar-06	267	246	100	0	36	41	10	12	0	14	5	1	2	734
Feb-06	253	220	63	0	33	37	13	10	0	25	14	0	1	669
Jan-06	266	187	63	0	43	48	11	13	0	12	5	0	6	654
Dec-05	193	204	84	0	48	43	15	17	0	16	11	0	4	635

Definitions of Release Types

Discretionary parole-Released to parole through Parole Board discretion prior to mandatory release or sentence discharge date.

Mandatory parole-Released to parole on mandatory release date.

Mand. Repar-Reparoled on specific date set by Parole Board (includes S.B. 252 reparoles). n/a - breakout not available prior to June 2004.

Com. Supv.-Released to serve 12 months of community supervision.

Sentence discharge-Completion of sentence with no further supervision.

H.B. 1087 discharge-Completion of sentence with no further supervision, subject to earn time provisions of H.B. 95-1087.

Martin/ Cooper discharge-Completion of sentence with no further supervision, sex offender subject to Martin/Cooper Supreme Court decision.

Chgs/ Det. discharge-Completion of sentence, released to other law enforcement for pending charges or detainees.

Com. Spv. Elim discharge-Completion of sentence following reincarceration on community supervision sentence.

Probation-Released by court to probation.

Ct. Ord. Dsch.-Released by court order.

Appeal Bond-Released by court to appeal bond.

Deceased-Offender death in prison.

***Due to the decrease in community transportation services, the Department implemented a procedural change in December 2005 with regards to releasing inmates on weekends. As a result of this change, discretionary releases have increased and mandatory releases have decreased.**

COLORADO DEPARTMENT OF CORRECTIONS
ADULT INMATE RELEASES FROM PRISON
Female Population Only

Date: 12/4/2007

	Parole				Discharge					Other				Total
	Discretionary*	Mandatory*	Mand. Repar.*	Com. Supv.	Sentence	H.B. 1087	Martin/Cooper	Chgs/Det.	Com Spv. Elim	Probation	Ct. Ord. Dsch.	Appeal Bond	Deceased	
Nov-07	67	21	4	0	4	6	0	2	0	7	1	0	0	112
Oct-07	82	31	14	0	1	7	0	0	0	1	1	0	0	137
Sep-07	54	22	6	0	3	6	0	1	0	1	0	0	0	93
Aug-07	80	22	10	0	5	8	0	1	0	2	4	0	0	132
Jul-07	63	25	21	0	0	6	0	2	0	0	4	0	0	121
Jun-07	67	16	13	0	1	4	1	0	0	1	0	0	0	103
May-07	67	22	19	0	1	6	0	2	0	3	0	0	1	121
Apr-07	65	18	10	0	2	4	1	1	0	2	2	0	0	105
Mar-07	71	21	22	0	5	8	0	0	0	4	0	1	0	132
Feb-07	75	26	9	0	1	7	1	3	0	1	0	0	0	123
Jan-07	89	23	5	0	3	6	0	0	0	1	3	0	2	132
Dec-06	51	19	3	0	3	6	0	0	0	0	0	0	0	82
Nov-06	64	24	8	0	2	3	0	0	0	3	1	0	0	105
Oct-06	53	23	11	0	2	8	0	1	0	0	1	0	0	99
Sep-06	48	32	6	0	0	4	0	3	0	1	0	0	0	94
Aug-06	66	30	15	0	3	8	0	0	0	3	1	0	0	126
Jul-06	40	16	15	0	3	7	0	2	0	2	2	0	0	87
Jun-06	50	19	15	0	5	2	0	3	0	1	1	0	0	96
May-06	48	33	15	0	1	5	0	0	0	1	1	0	0	104
Apr-06	49	22	12	0	6	7	0	1	0	1	1	0	0	99
Mar-06	38	36	13	0	3	5	0	0	0	4	0	0	0	99
Feb-06	52	30	8	0	1	2	0	0	0	2	0	0	0	95
Jan-06	50	31	12	0	2	3	0	1	0	1	1	0	1	102
Dec-05	42	34	14	0	3	4	0	0	0	2	1	0	2	102

Definitions of Release Types

Discretionary parole-Released to parole through Parole Board discretion prior to mandatory release or sentence discharge date.

Mandatory parole-Released to parole on mandatory release date.

Mand. Repar-Reparoled on specific date set by Parole Board (includes S.B. 252 reparoles). n/a - breakout not available prior to June 2004.

Com. Supv.-Released to serve 12 months of community supervision.

Sentence discharge-Completion of sentence with no further supervision.

H.B. 1087 discharge-Completion of sentence with no further supervision, subject to earn time provisions of H.B. 95-1087.

Martin/ Cooper discharge-Completion of sentence with no further supervision, sex offender subject to Martin/Cooper Supreme Court decision.

Chgs/ Det. discharge-Completion of sentence, released to other law enforcement for pending charges or detainees.

Com. Spv. Elim discharge-Completion of sentence following reincarceration on community supervision sentence.

Probation-Released by court to probation.

Ct. Ord. Dsch.-Released by court order.

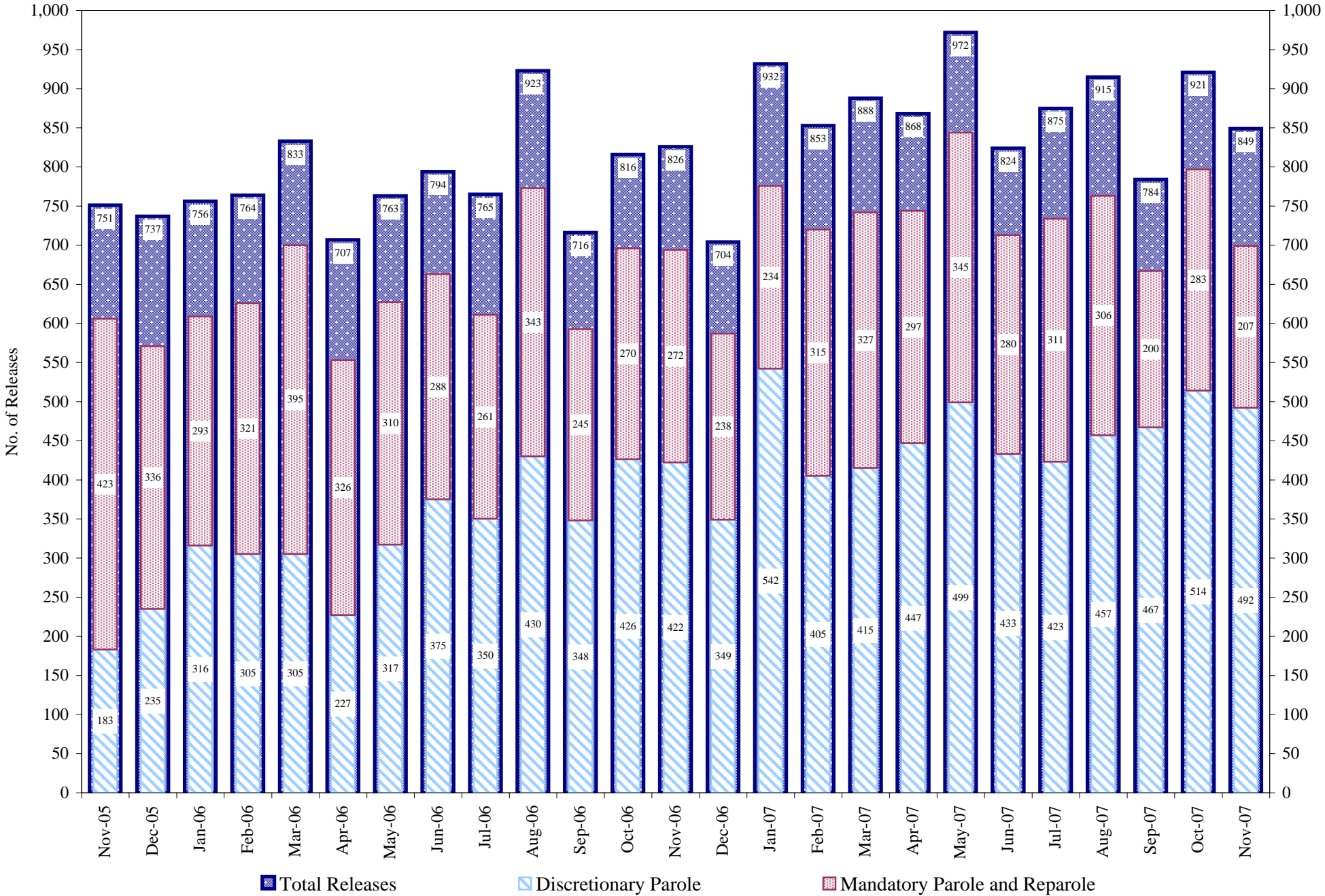
Appeal Bond-Released by court to appeal bond.

Deceased-Offender death in prison.

*Due to the decrease in community transportation services, the Department implemented a procedural change in December 2005 with regards to releasing inmates on weekends. As a result of this change, discretionary releases have increased and mandatory releases have decreased.

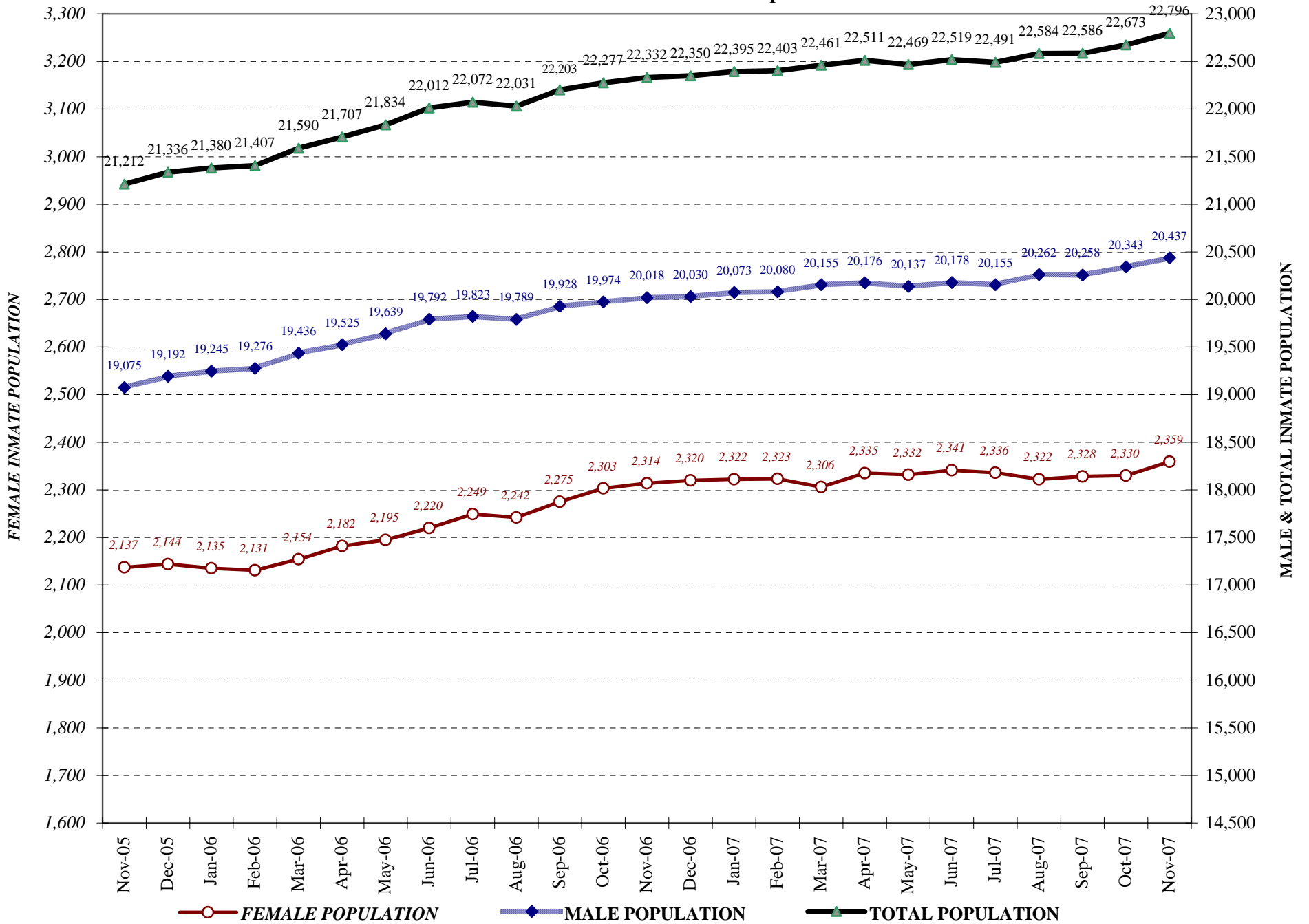
COLORADO DEPARTMENT OF CORRECTIONS

Adult Prison Releases

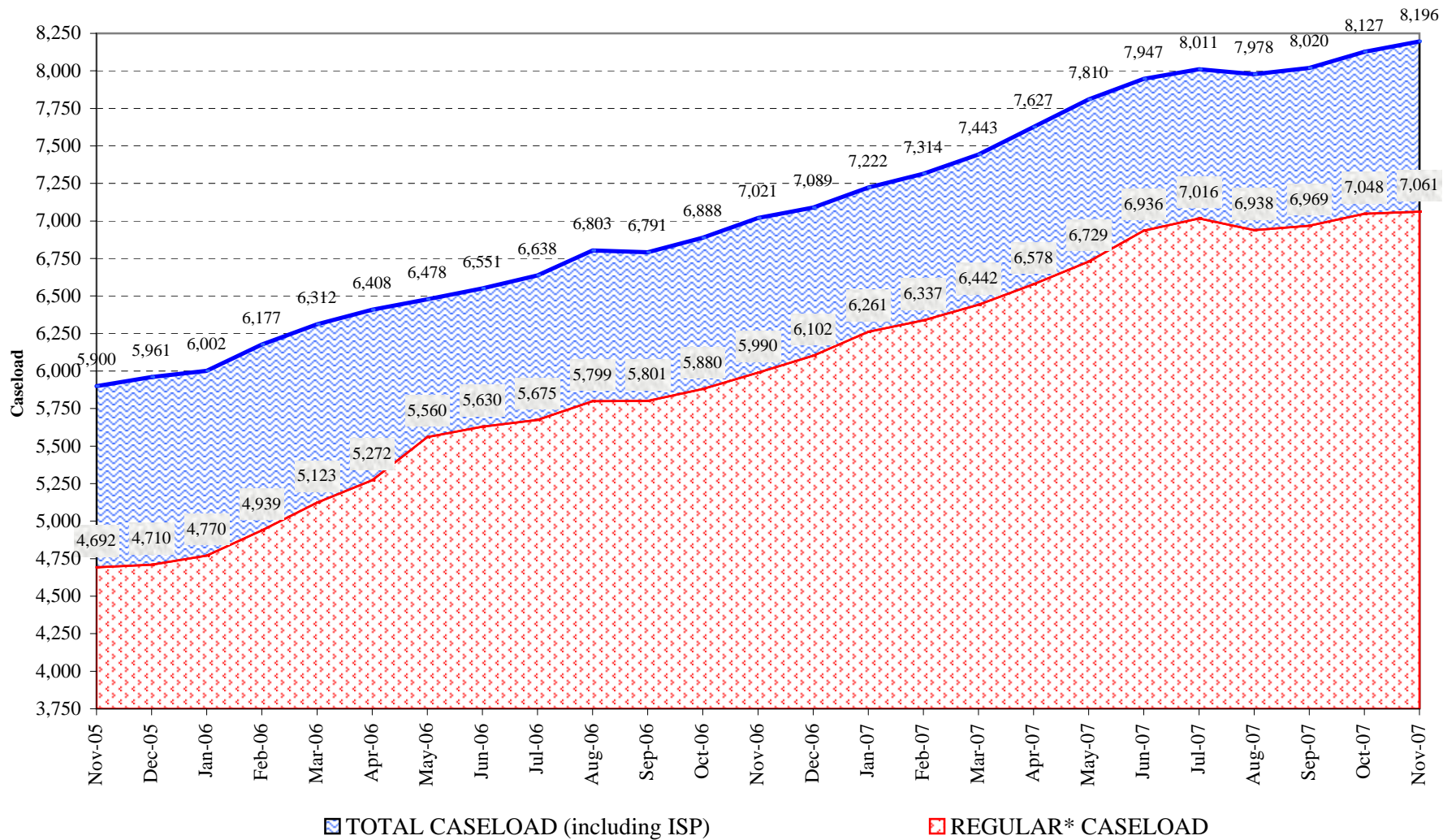


Total releases include releases to discretionary parole, mandatory parole and reparaole, all types of discharges and other releases as detailed on the previous page.

COLORADO DEPARTMENT OF CORRECTIONS Adult Jurisdiction Inmate Population



COLORADO DEPARTMENT OF CORRECTIONS Parole Population



* Regular caseload includes interstate parole, but excludes out-of-state parolees and absconders.