

**COLORADO DEPARTMENT OF CORRECTIONS  
MONTHLY POPULATION AND CAPACITY REPORT  
AS OF SEPTEMBER 30, 2007**

5-Oct-07

	08/31/07	CAPACITY CHANGES	------ 09/30/07 -----		------ 09/30/06 -----	
	OPERATIONAL CAPACITY*		OPERATIONAL CAPACITY*	ON-GRDS POPULATION	OPERATIONAL CAPACITY*	ON-GRDS POPULATION
COLO STATE PENITENTIARY	756		756	751	756	753
CENTENNIAL CORR FAC	336		336	310	336	331
STERLING CORR FAC	2,545		2,545	2,490	2,445	2,404
LIMON CORR FAC	953		953	906	953	944
ARK VALLEY CORR FAC	1,007		1,007	997	1,007	994
BUENA VISTA CORR FAC	926		926	911	826	823
BUENA VISTA MIN CTR	292		292	282	292	288
COLO TERR CORR FAC	786	150	936	782	786	800
FORT LYON CORR FAC	500		500	487	500	477
FREMONT CORR FAC	1,471	189	1,660	1,465	1,471	1,465
LA VISTA CORR FAC	519		519	498	303	296
ARROWHEAD CORR CTR	494		494	491	494	488
FOUR MILE CORR CTR	499		499	495	499	495
PUEBLO MINIMUM CTR	0		0	0	0	0
TRINIDAD CORR FAC	484		484	476	484	475
S.T.U. at Y.O.S.	30		30	17	30	27
SKYLINE CORR CTR	249		249	247	249	249
COLORADO CORR CTR	150		150	150	150	146
DELTA CORR CTR	484		484	467	484	479
RIFLE CORR CTR	192		192	180	192	190
COLO CORR ALT PROGRAM	100		100	106	100	126
COLO WOMEN'S CORR FAC	224		224	208	224	217
DENVER WOMEN'S CORR FAC	900		900	741	900	874
DENVER REC DIAG CTR	480		480	447	480	492
SAN CARLOS CORR FAC	255		255	248	255	244
<b>***SUBTOTAL***</b>	<b>14,632</b>	<b>339</b>	<b>14,971</b>	<b>14,152</b>	<b>14,216</b>	<b>14,077</b>
<b>CONTRACTS:</b>						
BENT COUNTY CORR CTR	724		724	700	724	712
HUERFANO COUNTY CORR CTR	774		774	723	774	767
CROWLEY COUNTY CORR FAC	1,720		1,720	1,600	1,754	1,550
KIT CARSON COUNTY CORR FAC	820		820	790	824	801
CHEYENNE MTN REENTRY CTR	500		500	500	500	471
HIGH PLAINS CORR FAC	270		270	231	270	269
NORTH FORK OK CORR FAC	480		480	479	0	0
OFF-GROUNDS POPULATION:				277		226
ESCAPEES/WALKAWAYS				230		250
REVOCATIONS-JAIL				1		0
<b>JAIL BACKLOG:</b>						
BACKLOG LESS THAN 72 HOURS			50		129	
BACKLOG GREATER THAN 72 HOURS (FISCAL YTD AVE = 63)			0		300	
BACKLOG-PAROLEES AWAITING TRANSFER			53		73	
<b>TOTAL JAIL BACKLOG</b>				103		502
<b>COUNTY JAIL CONTRACTS</b>				98		38
<b>COMMUNITY CORRECTIONS</b>						
<b>COMMUNITY</b>						
RESIDENTIAL	1,445	-38	1,407	1,407	1,310	1,310
PAROLE REVOCATIONS	1	0	1	1	1	1
REVOKED-RET TO CUST	250	8	258	258	229	229
NON-RESIDENTIAL	58	30	88	88	74	74
REGRESSIONS	51	-7	44	44	56	56
<b>TOTAL COMMUNITY</b>	<b>1,805</b>	<b>-7</b>	<b>1,798</b>	<b>1,798</b>	<b>1,670</b>	<b>1,670</b>
<b>ISP</b>						
RESIDENTIAL	846	15	861	861	814	814
NON-RESIDENTIAL	34	0	34	34	44	44
REGRESSIONS	9	0	9	9	12	12
<b>TOTAL ISP</b>	<b>889</b>	<b>15</b>	<b>904</b>	<b>904</b>	<b>870</b>	<b>870</b>
<b>TOTAL COMM. CORRECTIONS</b>	<b>2,694</b>	<b>8</b>	<b>2,702</b>	<b>2,702</b>	<b>2,540</b>	<b>2,540</b>
MALE POPULATION			<b>20,258</b>		19,928	
FEMALE POPULATION			<b>2,328</b>		2,275	
<b>**TOTAL INMATE JURISDICTIONAL POPULATION**</b>				<b>22,586</b>		<b>22,203</b>

\*OPERATIONAL CAPACITY INCLUDES ALL BEDS AVAILABLE FOR USE, INCLUDING MANAGEMENT CONTROL UNITS, BU  
EXCLUDES EMERGENCY DOUBLE BUNKING

**COLORADO DEPARTMENT OF CORRECTIONS**  
**MONTHLY POPULATION AND CAPACITY REPORT**  
**AS OF SEPTEMBER 30, 2007**

5-Oct-07

**CURRENT MONTH CHANGES IN CAPACITY:**

September-07	COLO TERR CORR FAC	150
September-07	FREMONT CORR FAC	189

**NET MONTHLY GROWTH RATE:**

CURRENT MONTH	2
FISCAL YEAR-TO-DATE AVERAGE	22

**YOUTHFUL OFFENDER SYSTEM**

	----- 09/30/07 -----			09/30/06	
	PUEBLO	CONTRACT FACILITIES	COMM. CORR.	TOTAL POPULATION	TOTAL POPULATION
INTAKE/IDO	4			4	17
RFP/REMEDICATION	16			16	2
PHASE I	143	0		143	151
PHASE II	16			16	6
PHASE III	1		27	28	40
OFF GROUNDS/BACKLOG				3	6
<b>**TOTAL Y.O.S. POPULATION**</b>	<b>180</b>	<b>0</b>	<b>27</b>	<b>210</b>	<b>222</b>

	CURRENT MONTH	FISCAL YR. TO DATE
YOS ADMISSIONS	4	11
YOS RELEASES:		
COMPLETION OF SENTENCE	1	7
JUDICIAL RELEASE TO PROB/CT ORD DISCHG	1	2
JUDICIAL TRANSFER TO DOC	0	0
TERMINATION/FAILURE	0	1
DECEASED	0	0
TOTAL RELEASES	2	10

**PAROLE CASELOAD**

	----- 09/30/07 -----			----- 08/31/07 -----	----- 09/30/06 -----		
	DOMESTIC	INTERST PAR/PROB	TOTAL CASELOAD	DOMESTIC	TOTAL CASELOAD	DOMESTIC	TOTAL CASELOAD
DENVER REGION							
REGULAR	2,514	110	2,624	2,508	2,648	2,064	218
ISP	450		450	448	448	486	486
SUBTOTAL	2,964	110	3,074	2,956	3,067	2,550	2,656
NORTHEAST REGION							
REGULAR	1,860	45	1,905	1,830	1,878	1,516	1,546
ISP	236		236	232	232	227	227
SUBTOTAL	2,096	45	2,141	2,062	2,108	1,743	1,789
SOUTHEAST REGION							
REGULAR	1,653	96	1,749	1,636	1,747	1,357	1,427
ISP	263		263	265	265	202	202
SUBTOTAL	1,916	96	2,012	1,901	1,993	1,559	1,640
WESTERN REGION							
REGULAR	647	44	691	676	743	592	648
ISP	102		102	95	95	75	75
SUBTOTAL	749	44	793	771	810	667	706
TOTAL CASELOAD							
REGULAR	6,674	295	6,969	6,650	6,938	5,529	5,801
ISP	1,051		1,051	1,040	1,040	990	990
TOTAL	7,725	295	8,020	7,690	7,978	6,519	6,791
ADDITIONAL CASELOAD:							
OUT-OF-STATE PAROLEES			1,903		1,874		171
PAROLEE ABSCONDERS			859		856		692

**COLORADO DEPARTMENT OF CORRECTIONS  
MONTHLY POPULATION AND CAPACITY REPORT  
AS OF SEPTEMBER 30, 2007**

	09/30/2007 Population			FINAL CUSTODY DESIGNATION*					
	On-Grds.	Off-Grds.	Total	Uncls.	Ad.Seg	Close	Medium	Min.-Res.	Minimum
COLO STATE PENITENTIARY	751	3	754			747	7		
CENTENNIAL CORR FAC	310	0	310			2	301	4	2
STERLING CORR FAC	2,490	27	2,517			254	749	490	583
LIMON CORR FAC	906	9	915			7	656	182	51
ARK VALLEY CORR FAC	997	14	1,011			7	471	300	167
BUENA VISTA CORR FAC	911	17	928			25	352	337	145
BUENA VISTA MIN CTR	282	9	291			0	0	1	214
COLO TERR CORR FAC	781	4	785			14	161	242	214
FORT LYON CORR FAC	487	13	500			2	36	208	170
FREMONT CORR FAC	1,465	12	1,477			21	172	393	530
ARROWHEAD CORR CTR	491	2	493					2	295
FOUR MILE CORR CTR	495	6	501					0	339
TRINIDAD CORR FAC	476	12	488					3	431
S.T.U. at Y.O.S.	17	3	20					7	13
SKYLINE CORR CTR	247	0	247						1
COLORADO CORR CTR	150	0	150						0
DELTA CORR CTR	467	5	472						1
RIFLE CORR CTR	180	1	181						4
COLO CORR ALT PROGRAM	98	11	109					1	6
DENVER REC DIAG CTR	446	9	455	106	6	42	94	138	69
SAN CARLOS CORR FAC	248	5	253		26	102	60	36	29
CONTRACTS:									
BENT COUNTY CORR CTR	700	12	712				7	385	198
HUERFANO COUNTY CORR CTR	723	10	733				6	405	187
CROWLEY COUNTY CORR FAC	1,600	43	1,643		17	9	841	525	251
KIT CARSON COUNTY CORR FAC	790	11	801		2	12	422	223	142
CHEYENNE MTN REENTRY CTR	500	5	505				4	135	215
NORTH FORK OK CORR FAC	479	1	480				2	213	198
COMMUNITY/ISP	1,779	103	1,882				7	48	104
<b>Total Classified Male Population</b>	<b>19,266</b>	<b>347</b>	<b>19,613</b>	<b>106</b>	<b>1,130</b>	<b>3,096</b>	<b>4,773</b>	<b>4,990</b>	<b>5,518</b>
<b>Percent of Total</b>				<b>0.5%</b>	<b>5.8%</b>	<b>15.8%</b>	<b>24.3%</b>	<b>25.4%</b>	<b>28.1%</b>
Unclassified Facilities:									
JAIL BACKLOG/REVOCATIONS	81	0	81						
COUNTY JAIL CONTRACTS	99	0	99						
REVOKED TO JAIL	0	0	0						
REVOKED TO COMM CTR	0	0	0						
REVOKED-RET TO CUST FAC	166	64	230						
COMM/ISP REGRESSIONS	0	37	37						
ESCAPEES/WALKAWAYS	38	160	198						
<b>Total Unclassified Facilities</b>	<b>384</b>	<b>261</b>	<b>645</b>						
<b>Total Male Population</b>	<b>19,650</b>	<b>608</b>	<b>20,258</b>						
COLO WOMEN'S CORR FAC	208	2	210				32	27	82
DENVER WOMEN'S CORR FAC	741	10	751	9	20	127	94	307	194
LA VISTA CORR FAC	498	17	515			74	92	213	136
COLO CORR ALT PROGRAM	8	0	8						8
DENVER REC DIAG CTR INF	1	0	1						1
COLO TERR CORR FAC INF.	1	1	2					1	1
CONTRACTS:									
HIGH PLAINS CORR FAC	231	3	234					21	134
COMMUNITY/ISP	489	19	508				2	12	43
<b>Total Classified Female Population</b>	<b>2,177</b>	<b>52</b>	<b>2,229</b>	<b>9</b>	<b>20</b>	<b>235</b>	<b>247</b>	<b>780</b>	<b>938</b>
<b>Percent of Total</b>				<b>0.4%</b>	<b>0.9%</b>	<b>10.5%</b>	<b>11.1%</b>	<b>35.0%</b>	<b>42.1%</b>
Unclassified Facilities:									
JAIL BACKLOG	22	0	22						
COUNTY JAIL CONTRACTS	0	0	0						
REVOKED TO JAIL	1	0	1						
REVOKED TO COMM CTR	0	0	0						
REVOKED-RET TO CUST FAC	40	2	42						
COMM/ISP REGRESSIONS	0	2	2						
ESCAPEES/WALKAWAYS	0	32	32						
<b>Total Unclassified Facilities</b>	<b>63</b>	<b>36</b>	<b>99</b>						
<b>Total Female Population</b>	<b>2,240</b>	<b>88</b>	<b>2,328</b>						

**COLORADO DEPARTMENT OF CORRECTIONS**  
**ADULT INMATE JURISDICTIONAL POPULATION (1)**

DATE: 10/5/2007

DATE	MALE POPULATION			FEMALE POPULATION			TOTAL POPULATION		
	Male Population	Net Change	Fiscal Y-T-D Average	Female Population	Net Change	Fiscal Y-T-D Average	Total Population	Net Change	Fiscal Y-T-D Average
<b>09-30-07</b>	<b>20,258</b>	-4	<b>27</b>	<b>2,328</b>	6	<b>-4</b>	<b>22,586</b>	2	<b>22</b>
08-31-07	20,262	107		2,322	-14		22,584	93	
07-31-07	20,155	-23		2,336	-5		22,491	-28	
<b>06-30-07</b>	<b>20,178</b>	41		<b>2,341</b>	9		<b>22,519</b>	50	
05-31-07	20,137	-39		2,332	-3		22,469	-42	
04-30-07	20,176	21		2,335	29		22,511	50	
03-31-07	20,155	75		2,306	-17		22,461	58	
02-28-07	20,080	7		2,323	1		22,403	8	
01-31-07	20,073	43		2,322	2		22,395	45	
12-31-06	20,030	12	<b>32</b>	2,320	6	<b>10</b>	22,350	18	<b>42</b>
11-30-06	20,018	44		2,314	11		22,332	55	
10-31-06	19,974	46		2,303	28		22,277	74	
09-30-06	19,928	139		2,275	33		22,203	172	
08-31-06	19,789	-34		2,242	-7		22,031	-41	
07-31-06	19,823	31		2,249	29		22,072	60	
<b>06-30-06</b>	<b>19,792</b>	153		<b>2,220</b>	25		<b>22,012</b>	178	
05-31-06	19,639	114		2,195	13		21,834	127	
04-30-06	19,525	89		2,182	28		21,707	117	
03-31-06	19,436	160		2,154	23		21,590	183	
02-28-06	19,276	31		2,131	-4		21,407	27	
01-31-06	19,245	53		2,135	-9		21,380	44	
12-31-05	19,192	117	<b>97</b>	2,144	7	<b>12</b>	21,336	124	<b>109</b>
11-30-05	19,075	32		2,137	9		21,212	41	
10-31-05	19,043	43		2,128	13		21,171	56	
09-30-05	19,000	71		2,115	-7		21,115	64	
08-31-05	18,929	183		2,122	19		21,051	202	
07-31-05	18,746	115		2,103	30		20,849	145	
<b>06-30-05</b>	<b>18,631</b>		<b>68</b>	<b>2,073</b>		<b>27</b>	<b>20,704</b>		<b>95</b>
<b>06-30-04</b>	<b>17,814</b>		<b>49</b>	<b>1,755</b>		<b>11</b>	<b>19,569</b>		<b>60</b>
<b>06-30-03</b>	<b>17,226</b>		<b>57</b>	<b>1,620</b>		<b>10</b>	<b>18,846</b>		<b>67</b>
<b>06-30-02</b>	<b>16,539</b>		<b>87</b>	<b>1,506</b>		<b>14</b>	<b>18,045</b>		<b>101</b>
<b>06-30-01</b>	<b>15,493</b>		<b>63</b>	<b>1,340</b>		<b>6</b>	<b>16,833</b>		<b>70</b>
<b>06-30-00</b>	<b>14,733</b>		<b>99</b>	<b>1,266</b>		<b>7</b>	<b>15,999</b>		<b>106</b>
<b>06-30-99</b>	<b>13,547</b>		<b>75</b>	<b>1,179</b>		<b>14</b>	<b>14,726</b>		<b>89</b>
<b>06-30-98</b>	<b>12,647</b>		<b>81</b>	<b>1,016</b>		<b>9</b>	<b>13,663</b>		<b>89</b>
<b>06-30-97</b>	<b>11,681</b>			<b>909</b>			<b>12,590</b>		

(1) Adult inmate jurisdictional population includes on-grounds, off-grounds, out-of-state, escapees, and jail backlog and excludes offenders sentenced to the Youthful Offender System (Y.O.S.).

**COLORADO DEPARTMENT OF CORRECTIONS**  
**ADULT INMATE RELEASES FROM PRISON**  
**TOTAL Population (Male and Female)**

Date: 10/5/2007

	Parole				Discharge					Other				Total
	Discretionary*	Mandatory*	Mand. Repar.*	Com. Supv.	Sentence	H.B. 1087	Martin/Cooper	Chgs/Det.	Com Spv. Elim	Probation	Ct. Ord. Dsch.	Appeal Bond	Deceased	
Sep-07	467	153	47	0	39	41	6	9	0	5	13	1	3	784
Aug-07	457	192	114	0	34	54	8	21	0	16	14	0	5	915
Jul-07	423	196	115	0	34	58	6	22	0	7	10	0	4	875
Jun-07	433	188	92	0	19	49	13	11	0	9	8	0	2	824
May-07	499	216	129	0	31	43	7	20	0	14	9	0	4	972
Apr-07	447	197	100	0	26	51	9	16	0	6	10	0	6	868
Mar-07	415	187	140	0	33	64	4	14	0	14	13	1	3	888
Feb-07	405	235	80	0	24	58	12	19	0	15	5	0	0	853
Jan-07	542	192	42	0	37	59	5	15	0	15	16	0	9	932
Dec-06	349	179	59	0	27	44	10	14	0	13	6	1	2	704
Nov-06	422	202	70	0	30	45	12	12	0	16	11	0	6	826
Oct-06	426	186	84	0	36	44	11	10	0	6	7	1	5	816
Sep-06	348	180	65	0	29	44	13	15	0	13	7	0	2	716
Aug-06	430	239	104	0	37	52	10	21	0	17	11	0	2	923
Jul-06	350	174	87	0	43	52	9	20	0	17	6	0	7	765
Jun-06	375	199	89	0	37	43	10	16	0	16	7	0	2	794
May-06	317	235	75	0	34	52	10	15	0	13	9	0	3	763
Apr-06	227	235	91	0	41	54	17	17	0	10	7	0	8	707
Mar-06	305	282	113	0	39	46	10	12	0	18	5	1	2	833
Feb-06	305	250	71	0	34	39	13	10	0	27	14	0	1	764
Jan-06	316	218	75	0	45	51	11	14	0	13	6	0	7	756
Dec-05	235	238	98	0	51	47	15	17	0	18	12	0	6	737
Nov-05	183	297	126	0	37	55	7	13	0	10	18	0	5	751
Oct-05	157	304	130	0	34	58	11	19	0	17	10	1	5	746

Definitions of Release Types

**Discretionary parole**-Released to parole through Parole Board discretion prior to mandatory release or sentence discharge date.

**Mandatory parole**-Released to parole on mandatory release date.

**Mand. Repar**-Reparoled on specific date set by Parole Board (includes S.B. 252 reparoles). n/a - breakout not available prior to June 2004.

**Com. Supv.**-Released to serve 12 months of community supervision.

**Sentence discharge**-Completion of sentence with no further supervision.

**H.B. 1087 discharge**-Completion of sentence with no further supervision, subject to earn time provisions of H.B. 95-1087.

**Martin/ Cooper discharge**-Completion of sentence with no further supervision, sex offender subject to Martin/Cooper Supreme Court decision.

**Chgs/ Det. discharge**-Completion of sentence, released to other law enforcement for pending charges or detainees.

**Com. Spv. Elim discharge**-Completion of sentence following reincarceration on community supervision sentence.

**Probation**-Released by court to probation.

**Ct. Ord. Dsch.**-Released by court order.

**Appeal Bond**-Released by court to appeal bond.

**Deceased**-Offender death in prison.

**\*Due to the decrease in community transportation services, the Department implemented a procedural change in December 2005 with regards to releasing inmates on weekends. As a result of this change, discretionary releases have increased and mandatory releases have decreased.**

# COLORADO DEPARTMENT OF CORRECTIONS

## ADULT INMATE RELEASES FROM PRISON

### Male Population Only

Date: 10/5/2007

	Parole				Discharge					Other				Total
	Discretionary*	Mandatory*	Mand. Repair.*	Com. Supv.	Sentence	H.B. 1087	Martin/Cooper	Chgs/Det.	Com Spv. Elim	Probation	Ct. Ord. Dsch.	Appeal Bond	Deceased	
Sep-07	413	131	41	0	36	35	6	8	0	4	13	1	3	691
Aug-07	377	170	104	0	29	46	8	20	0	14	10	0	5	783
Jul-07	360	171	94	0	34	52	6	20	0	7	6	0	4	754
Jun-07	366	172	79	0	18	45	12	11	0	8	8	0	2	721
May-07	432	194	110	0	30	37	7	18	0	11	9	0	3	851
Apr-07	382	179	90	0	24	47	8	15	0	4	8	0	6	763
Mar-07	344	166	118	0	28	56	4	14	0	10	13	0	3	756
Feb-07	330	209	71	0	23	51	11	16	0	14	5	0	0	730
Jan-07	453	169	37	0	34	53	5	15	0	14	13	0	7	800
Dec-06	298	160	56	0	24	38	10	14	0	13	6	1	2	622
Nov-06	358	178	62	0	28	42	12	12	0	13	10	0	6	721
Oct-06	373	163	73	0	34	36	11	9	0	6	6	1	5	717
Sep-06	300	148	59	0	29	40	13	12	0	12	7	0	2	622
Aug-06	364	209	89	0	34	44	10	21	0	14	10	0	2	797
Jul-06	310	158	72	0	40	45	9	18	0	15	4	0	7	678
Jun-06	325	180	74	0	32	41	10	13	0	15	6	0	2	698
May-06	269	202	60	0	33	47	10	15	0	12	8	0	3	659
Apr-06	178	213	79	0	35	47	17	16	0	9	6	0	8	608
Mar-06	267	246	100	0	36	41	10	12	0	14	5	1	2	734
Feb-06	253	220	63	0	33	37	13	10	0	25	14	0	1	669
Jan-06	266	187	63	0	43	48	11	13	0	12	5	0	6	654
Dec-05	193	204	84	0	48	43	15	17	0	16	11	0	4	635
Nov-05	156	251	114	0	32	47	7	12	0	10	17	0	4	650
Oct-05	127	273	101	0	32	50	11	17	0	15	10	1	4	641

#### Definitions of Release Types

**Discretionary parole**-Released to parole through Parole Board discretion prior to mandatory release or sentence discharge date.

**Mandatory parole**-Released to parole on mandatory release date.

**Mand. Repair**-Reparoled on specific date set by Parole Board (includes S.B. 252 reparoles). n/a - breakout not available prior to June 2004.

**Com. Supv.**-Released to serve 12 months of community supervision.

**Sentence discharge**-Completion of sentence with no further supervision.

**H.B. 1087 discharge**-Completion of sentence with no further supervision, subject to earn time provisions of H.B. 95-1087.

**Martin/ Cooper discharge**-Completion of sentence with no further supervision, sex offender subject to Martin/Cooper Supreme Court decision.

**Chgs/ Det. discharge**-Completion of sentence, released to other law enforcement for pending charges or detainees.

**Com. Spv. Elim discharge**-Completion of sentence following reincarceration on community supervision sentence.

**Probation**-Released by court to probation.

**Ct. Ord. Dsch.**-Released by court order.

**Appeal Bond**-Released by court to appeal bond.

**Deceased**-Offender death in prison.

**\*Due to the decrease in community transportation services, the Department implemented a procedural change in December 2005 with regards to releasing inmates on weekends. As a result of this change, discretionary releases have increased and mandatory releases have decreased.**

**COLORADO DEPARTMENT OF CORRECTIONS**  
**ADULT INMATE RELEASES FROM PRISON**  
**Female Population Only**

Date: 10/5/2007

	Parole				Discharge					Other				Total
	Discretionary*	Mandatory*	Mand. Repar.*	Com. Supv.	Sentence	H.B. 1087	Martin/Cooper	Chgs/Det.	Com Spv. Elim	Probation	Ct. Ord. Dsch.	Appeal Bond	Deceased	
Sep-07	54	22	6	0	3	6	0	1	0	1	0	0	0	93
Aug-07	80	22	10	0	5	8	0	1	0	2	4	0	0	132
Jul-07	63	25	21	0	0	6	0	2	0	0	4	0	0	121
Jun-07	67	16	13	0	1	4	1	0	0	1	0	0	0	103
May-07	67	22	19	0	1	6	0	2	0	3	0	0	1	121
Apr-07	65	18	10	0	2	4	1	1	0	2	2	0	0	105
Mar-07	71	21	22	0	5	8	0	0	0	4	0	1	0	132
Feb-07	75	26	9	0	1	7	1	3	0	1	0	0	0	123
Jan-07	89	23	5	0	3	6	0	0	0	1	3	0	2	132
Dec-06	51	19	3	0	3	6	0	0	0	0	0	0	0	82
Nov-06	64	24	8	0	2	3	0	0	0	3	1	0	0	105
Oct-06	53	23	11	0	2	8	0	1	0	0	1	0	0	99
Sep-06	48	32	6	0	0	4	0	3	0	1	0	0	0	94
Aug-06	66	30	15	0	3	8	0	0	0	3	1	0	0	126
Jul-06	40	16	15	0	3	7	0	2	0	2	2	0	0	87
Jun-06	50	19	15	0	5	2	0	3	0	1	1	0	0	96
May-06	48	33	15	0	1	5	0	0	0	1	1	0	0	104
Apr-06	49	22	12	0	6	7	0	1	0	1	1	0	0	99
Mar-06	38	36	13	0	3	5	0	0	0	4	0	0	0	99
Feb-06	52	30	8	0	1	2	0	0	0	2	0	0	0	95
Jan-06	50	31	12	0	2	3	0	1	0	1	1	0	1	102
Dec-05	42	34	14	0	3	4	0	0	0	2	1	0	2	102
Nov-05	27	46	12	0	5	8	0	1	0	0	1	0	1	101
Oct-05	30	31	29	0	2	8	0	2	0	2	0	0	1	105

Definitions of Release Types

**Discretionary parole**-Released to parole through Parole Board discretion prior to mandatory release or sentence discharge date.

**Mandatory parole**-Released to parole on mandatory release date.

**Mand. Repar**-Reparoled on specific date set by Parole Board (includes S.B. 252 reparoles). n/a - breakout not available prior to June 2004.

**Com. Supv.**-Released to serve 12 months of community supervision.

**Sentence discharge**-Completion of sentence with no further supervision.

**H.B. 1087 discharge**-Completion of sentence with no further supervision, subject to earn time provisions of H.B. 95-1087.

**Martin/ Cooper discharge**-Completion of sentence with no further supervision, sex offender subject to Martin/Cooper Supreme Court decision.

**Chgs/ Det. discharge**-Completion of sentence, released to other law enforcement for pending charges or detainees.

**Com. Spv. Elim discharge**-Completion of sentence following reincarceration on community supervision sentence.

**Probation**-Released by court to probation.

**Ct. Ord. Dsch.**-Released by court order.

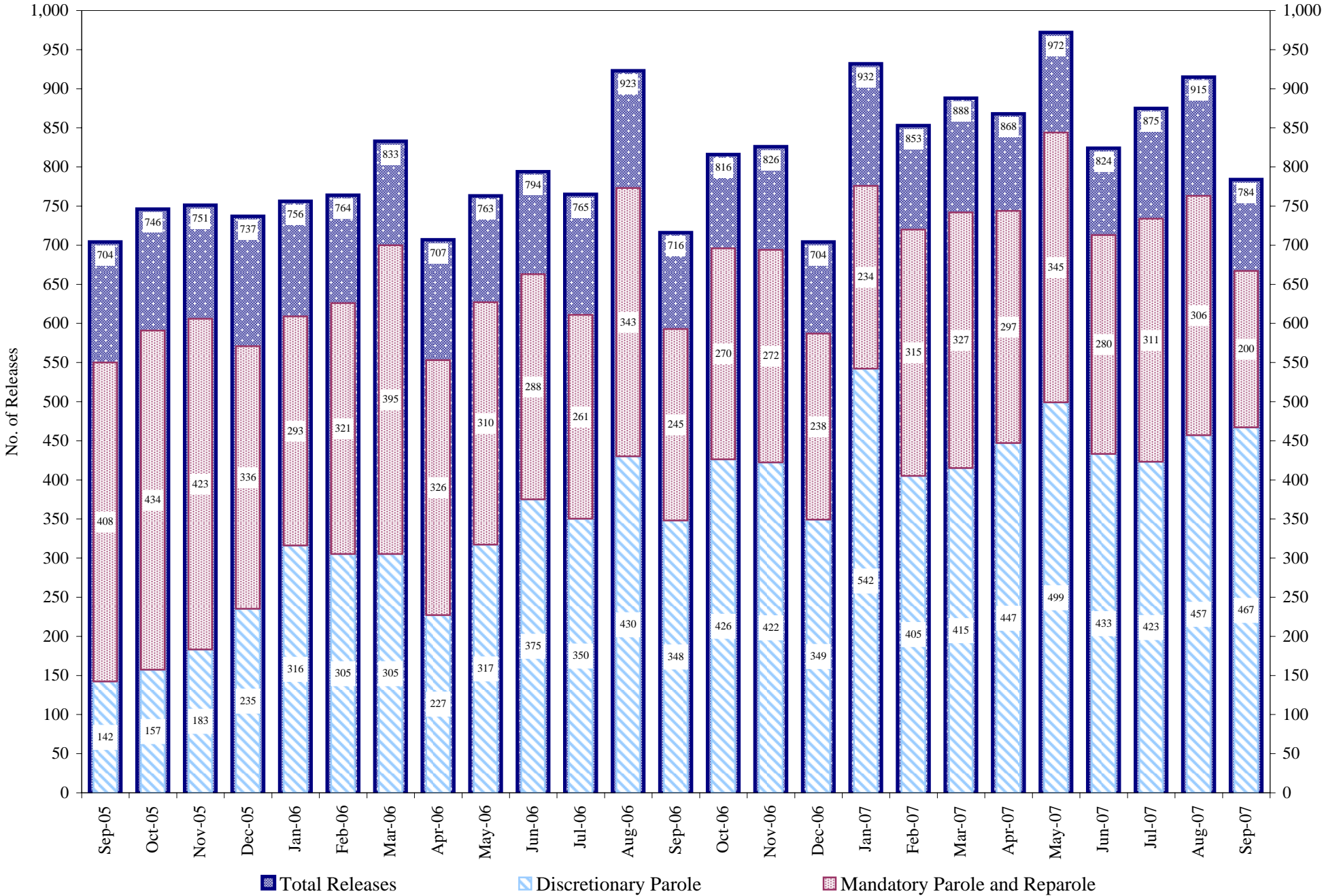
**Appeal Bond**-Released by court to appeal bond.

**Deceased**-Offender death in prison.

**\*Due to the decrease in community transportation services, the Department implemented a procedural change in December 2005 with regards to releasing inmates on weekends. As a result of this change, discretionary releases have increased and mandatory releases have decreased.**

# COLORADO DEPARTMENT OF CORRECTIONS

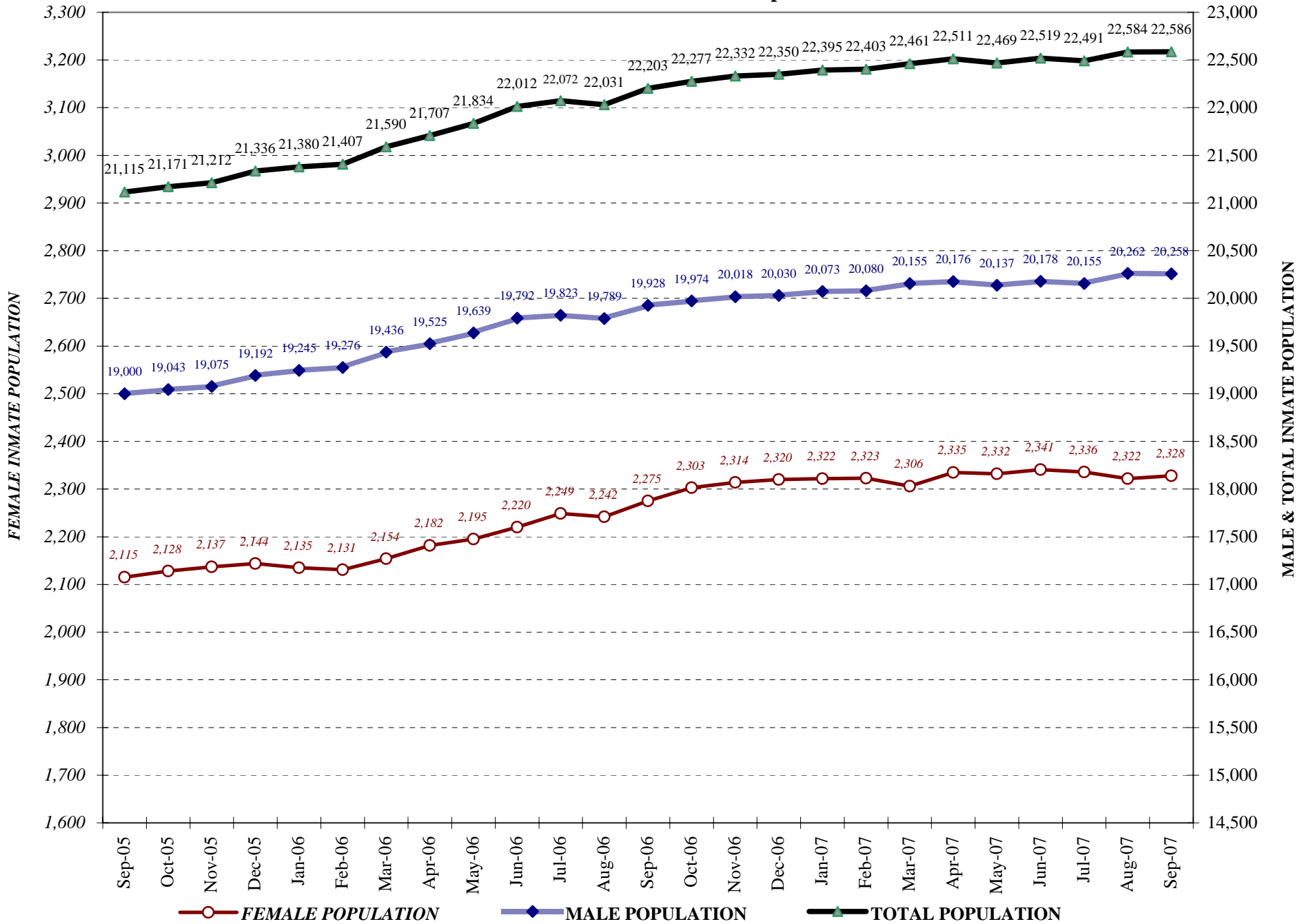
## Adult Prison Releases



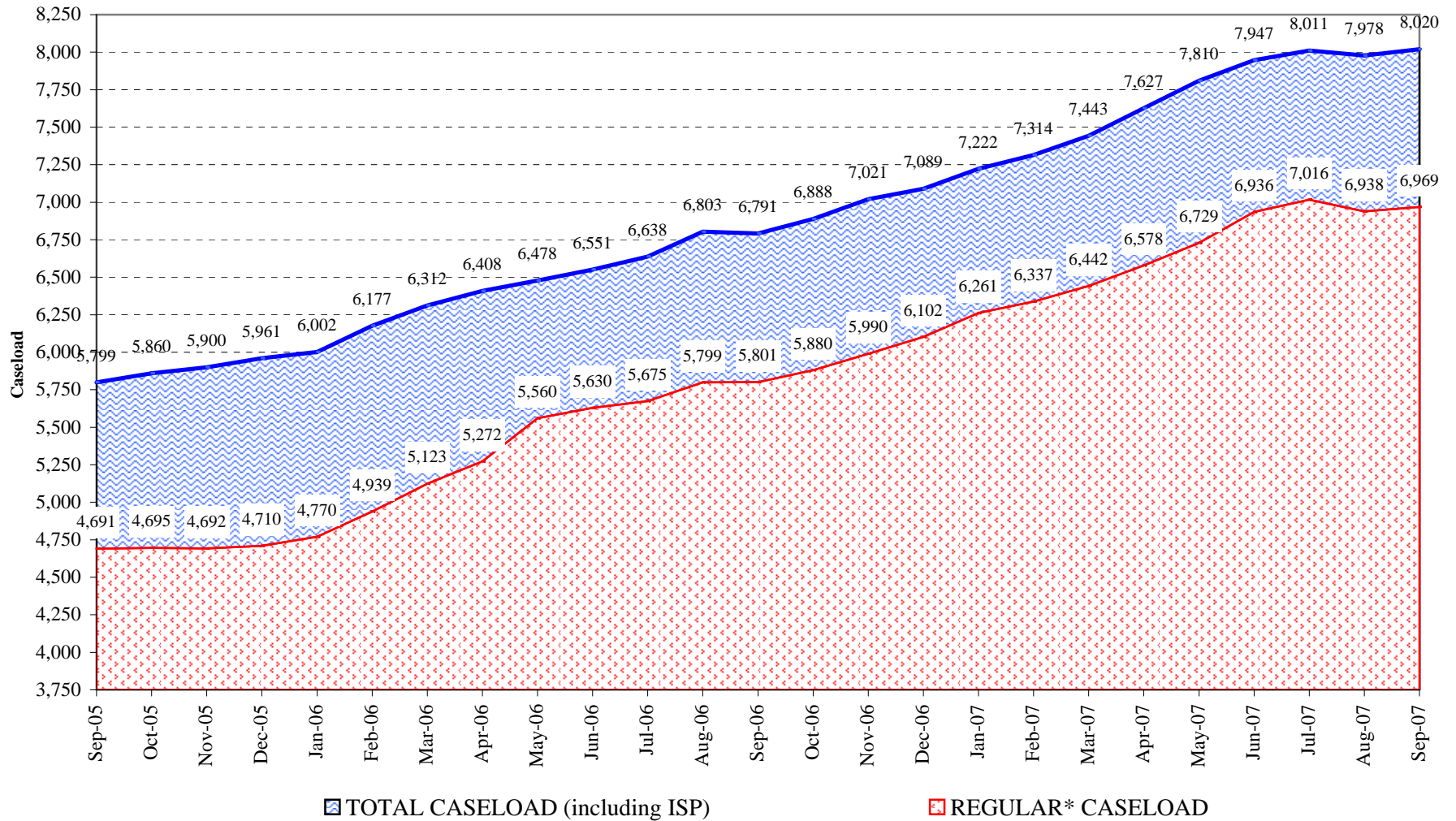
Total releases include releases to discretionary parole, mandatory parole and reparole, all types of discharges and other releases as detailed on the previous page.



## COLORADO DEPARTMENT OF CORRECTIONS Adult Jurisdiction Inmate Population



## COLORADO DEPARTMENT OF CORRECTIONS Parole Population



\* Regular caseload includes interstate parole, but excludes out-of-state parolees and absconders.