

**COLORADO DEPARTMENT OF CORRECTIONS
MONTHLY POPULATION AND CAPACITY REPORT
AS OF AUGUST 31, 2007**

5-Sep-07

	07/31/07	CAPACITY CHANGES	------ 08/31/07 -----		------ 08/31/06 -----	
	OPERATIONAL CAPACITY*		OPERATIONAL CAPACITY*	ON-GRDS POPULATION	OPERATIONAL CAPACITY*	ON-GRDS POPULATION
COLO STATE PENITENTIARY	756		756	755	756	744
CENTENNIAL CORR FAC	336		336	315	336	323
STERLING CORR FAC	2,545		2,545	2,513	2,445	2,415
LIMON CORR FAC	953		953	944	953	948
ARK VALLEY CORR FAC	1,007		1,007	998	1,007	1,003
BUENA VISTA CORR FAC	926		926	906	826	821
BUENA VISTA MIN CTR	292		292	282	292	287
COLO TERR CORR FAC	786		786	762	786	780
FORT LYON CORR FAC	500		500	486	500	472
FREMONT CORR FAC	1,471		1,471	1,461	1,471	1,463
LA VISTA CORR FAC	519		519	490	303	281
ARROWHEAD CORR CTR	494		494	491	494	488
FOUR MILE CORR CTR	499		499	477	499	494
PUEBLO MINIMUM CTR	0		0	0	0	0
TRINIDAD CORR FAC	484		484	482	484	479
S.T.U. at Y.O.S.	30		30	28	30	24
SKYLINE CORR CTR	249		249	243	249	249
COLORADO CORR CTR	150		150	149	150	150
DELTA CORR CTR	484		484	471	484	479
RIFLE CORR CTR	192		192	188	192	172
COLO CORR ALT PROGRAM	100		100	111	100	116
COLO WOMEN'S CORR FAC	224		224	211	224	221
DENVER WOMEN'S CORR FAC	900		900	754	900	896
DENVER REC DIAG CTR	480		480	488	480	478
SAN CARLOS CORR FAC	255		255	248	255	250
SUBTOTAL	14,632	0	14,632	14,253	14,216	14,033
CONTRACTS:						
BENT COUNTY CORR CTR	724		724	712	724	721
HUERFANO COUNTY CORR CTR	774		774	716	774	767
CROWLEY COUNTY CORR FAC	1,720		1,720	1,519	1,754	1,431
KIT CARSON COUNTY CORR FAC	820		820	784	824	791
CHEYENNE MTN REENTRY CTR	500		500	497	500	500
HIGH PLAINS CORR FAC	270		270	243	270	259
NORTH FORK OK CORR FAC	480		480	479	0	0
OFF-GROUNDS POPULATION:						
ESCAPEES/WALKAWAYS				260		233
REVOCATIONS-JAIL				224		254
				0		1
JAIL BACKLOG:						
BACKLOG LESS THAN 72 HOURS			67		154	
BACKLOG GREATER THAN 72 HOURS (FISCAL YTD AVE = 63)			0		246	
BACKLOG-PAROLEES AWAITING TRANSFER			48		77	
TOTAL JAIL BACKLOG				115		477
COUNTY JAIL CONTRACTS				88		50
COMMUNITY CORRECTIONS						
COMMUNITY						
RESIDENTIAL	1,431	14	1,445	1,445	1,310	1,310
PAROLE REVOCATIONS	1	0	1	1	1	1
REVOKED-RET TO CUST	245	5	250	250	198	198
NON-RESIDENTIAL	71	-13	58	58	78	78
REGRESSIONS	26	25	51	51	60	60
TOTAL COMMUNITY	1,774	31	1,805	1,805	1,647	1,647
ISP						
RESIDENTIAL	837	9	846	846	812	812
NON-RESIDENTIAL	35	-1	34	34	47	47
REGRESSIONS	4	5	9	9	8	8
TOTAL ISP	876	13	889	889	867	867
TOTAL COMM. CORRECTIONS	2,650	44	2,694	2,694	2,514	2,514
MALE POPULATION			20,262		19,789	
FEMALE POPULATION			2,322		2,242	
TOTAL INMATE JURISDICTIONAL POPULATION				22,584		22,031

*OPERATIONAL CAPACITY INCLUDES ALL BEDS AVAILABLE FOR USE, INCLUDING MANAGEMENT CONTROL UNITS, BU
EXCLUDES EMERGENCY DOUBLE BUNKING

COLORADO DEPARTMENT OF CORRECTIONS
MONTHLY POPULATION AND CAPACITY REPORT
AS OF AUGUST 31, 2007

5-Sep-07

CURRENT MONTH CHANGES IN CAPACITY:

NONE

NET MONTHLY GROWTH RATE:

CURRENT MONTH	93
FISCAL YEAR-TO-DATE AVERAGE	33

YOUTHFUL OFFENDER SYSTEM

	----- 08/31/07 -----			08/31/06
	PUEBLO	CONTRACT FACILITIES	COMM. CORR.	TOTAL POPULATION
INTAKE/IDO	3			20
RFP/REMEDATION	15			0
PHASE I	149	0		156
PHASE II	12			8
PHASE III	1		25	42
OFF GROUNDS/BACKLOG				3
TOTAL Y.O.S. POPULATION	180	0	25	227

	CURRENT MONTH	FISCAL YR. TO DATE
YOS ADMISSIONS	2	7
YOS RELEASES:		
COMPLETION OF SENTENCE	3	6
JUDICIAL RELEASE TO PROB/CT ORD DISCHG	0	1
JUDICIAL TRANSFER TO DOC	0	0
TERMINATION/FAILURE	1	1
DECEASED	0	0
TOTAL RELEASES	4	8

PAROLE CASELOAD

	----- 08/31/07 -----			----- 07/31/07 -----		----- 08/31/06 -----	
	DOMESTIC	INTERST PAR/PROB	TOTAL CASELOAD	DOMESTIC	TOTAL CASELOAD	DOMESTIC	TOTAL CASELOAD
DENVER REGION							
REGULAR	2,508	111	2,619	2,537	2,648	2,075	218
ISP	448		448	458	458	508	508
SUBTOTAL	2,956	111	3,067	2,995	3,106	2,583	2,686
NORTHEAST REGION							
REGULAR	1,830	46	1,876	1,831	1,878	1,500	1,546
ISP	232		232	219	219	229	229
SUBTOTAL	2,062	46	2,108	2,050	2,097	1,729	1,775
SOUTHEAST REGION							
REGULAR	1,636	92	1,728	1,655	1,747	1,348	1,427
ISP	265		265	236	236	191	191
SUBTOTAL	1,901	92	1,993	1,891	1,983	1,539	1,618
WESTERN REGION							
REGULAR	676	39	715	702	743	608	648
ISP	95		95	82	82	76	76
SUBTOTAL	771	39	810	784	825	684	724
TOTAL CASELOAD							
REGULAR	6,650	288	6,938	6,725	7,016	5,531	5,799
ISP	1,040		1,040	995	995	1,004	1,004
TOTAL	7,690	288	7,978	7,720	8,011	6,535	6,803
ADDITIONAL CASELOAD:							
OUT-OF-STATE PAROLEES			1,874		1,839		1,728
PAROLEE ABSCONDERS			856		800		641

**COLORADO DEPARTMENT OF CORRECTIONS
MONTHLY POPULATION AND CAPACITY REPORT
AS OF AUGUST 31, 2007**

	08/31/2007 Population			----- FINAL CUSTODY DESIGNATION* -----					
	On-Grds.	Off-Grds	Total	Uncls.	Ad.Seg	Close	Medium	Min.-Res.	Minimum
COLO STATE PENITENTIARY	755	2	757		754	1	1	1	
CENTENNIAL CORR FAC	315	1	316		12	277	6	10	11
STERLING CORR FAC	2,513	24	2,537		238	772	487	601	439
LIMON CORR FAC	944	7	951		19	681	185	47	19
ARK VALLEY CORR FAC	998	16	1,014		6	460	313	170	65
BUENA VISTA CORR FAC	906	16	922		24	338	359	132	69
BUENA VISTA MIN CTR	282	7	289		0	0	1	215	73
COLO TERR CORR FAC	761	13	774		8	170	238	205	153
FORT LYON CORR FAC	486	8	494		2	37	218	159	78
FREMONT CORR FAC	1,461	12	1,473		19	179	381	540	354
ARROWHEAD CORR CTR	491	2	493				2	290	201
FOUR MILE CORR CTR	477	22	499				3	339	157
TRINIDAD CORR FAC	482	3	485		1		4	419	61
S.T.U. at Y.O.S.	28	3	31				6	23	2
SKYLINE CORR CTR	243	4	247					2	245
COLORADO CORR CTR	149	0	149					1	148
DELTA CORR CTR	471	3	474					1	473
RIFLE CORR CTR	188	1	189					1	188
COLO CORR ALT PROGRAM	104	6	110					11	99
DENVER REC DIAG CTR	488	8	496	138	9	35	118	150	46
SAN CARLOS CORR FAC	248	6	254		25	102	54	42	31
CONTRACTS:									
BENT COUNTY CORR CTR	712	11	723		0	7	379	204	133
HUERFANO COUNTY CORR CTR	716	12	728		7	4	384	192	141
CROWLEY COUNTY CORR FAC	1,519	30	1,549		9	2	820	503	215
KIT CARSON COUNTY CORR FAC	784	13	797		2	9	433	231	122
CHEYENNE MTN REENTRY CTR	497	2	499		0	2	128	228	141
NORTH FORK OK CORR FAC	479	1	480		0	1	223	188	68
COMMUNITY/ISP	1,803	83	1,886			12	48	90	1,736
Total Classified Male Population	19,300	316	19,616	138	1,135	3,089	4,791	4,995	5,468
Percent of Total				0.7%	5.8%	15.7%	24.4%	25.5%	27.9%
Unclassified Facilities:									
JAIL BACKLOG/REVOCATIONS	97	0	97						
COUNTY JAIL CONTRACTS	88	0	88						
REVOKED TO JAIL	0	0	0						
REVOKED TO COMM CTR	1	0	1						
REVOKED-RET TO CUST FAC	175	37	212						
COMM/ISP REGRESSIONS	0	55	55						
ESCAPEES/WALKAWAYS	43	150	193						
Total Unclassified Facilities	404	242	646						
Total Male Population	19,704	558	20,262						
COLO WOMEN'S CORR FAC	211	1	212		3	34	30	74	71
DENVER WOMEN'S CORR FAC	754	7	761	12	16	126	101	310	196
LA VISTA CORR FAC	490	13	503			66	88	216	133
COLO CORR ALT PROGRAM	7	0	7					2	5
DENVER REC DIAG CTR INF	0	0	0						
COLO TERR CORR FAC INF.	1	1	2			1	1		
CONTRACTS:									
HIGH PLAINS CORR FAC	243	5	248				22	143	83
COMMUNITY/ISP	488	9	497			1	10	44	442
Total Classified Female Population	2,194	36	2,230	12	19	228	252	789	930
Percent of Total				0.5%	0.9%	10.2%	11.3%	35.4%	41.7%
Unclassified Facilities:									
JAIL BACKLOG	18	0	18						
COUNTY JAIL CONTRACTS	0	0	0						
REVOKED TO JAIL	0	0	0						
REVOKED TO COMM CTR	0	0	0						
REVOKED-RET TO CUST FAC	35	3	38						
COMM/ISP REGRESSIONS	0	5	5						
ESCAPEES/WALKAWAYS	2	29	31						
Total Unclassified Facilities	55	37	92						
Total Female Population	2,249	73	2,322						

COLORADO DEPARTMENT OF CORRECTIONS
ADULT INMATE JURISDICTIONAL POPULATION (1)

DATE: 9/5/2007

DATE	MALE POPULATION			FEMALE POPULATION			TOTAL POPULATION		
	Male Population	Net Change	Fiscal Y-T-D Average	Female Population	Net Change	Fiscal Y-T-D Average	Total Population	Net Change	Fiscal Y-T-D Average
08-31-07	20,262	107	42	2,322	-14	-10	22,584	93	33
07-31-07	20,155	-23		2,336	-5		22,491	-28	
06-30-07	20,178	41		2,341	9		22,519	50	
05-31-07	20,137	-39		2,332	-3		22,469	-42	
04-30-07	20,176	21		2,335	29		22,511	50	
03-31-07	20,155	75		2,306	-17		22,461	58	
02-28-07	20,080	7		2,323	1		22,403	8	
01-31-07	20,073	43		2,322	2		22,395	45	
12-31-06	20,030	12	32	2,320	6	10	22,350	18	42
11-30-06	20,018	44		2,314	11		22,332	55	
10-31-06	19,974	46		2,303	28		22,277	74	
09-30-06	19,928	139		2,275	33		22,203	172	
08-31-06	19,789	-34		2,242	-7		22,031	-41	
07-31-06	19,823	31		2,249	29		22,072	60	
06-30-06	19,792	153		2,220	25		22,012	178	
05-31-06	19,639	114		2,195	13		21,834	127	
04-30-06	19,525	89		2,182	28		21,707	117	
03-31-06	19,436	160		2,154	23		21,590	183	
02-28-06	19,276	31		2,131	-4		21,407	27	
01-31-06	19,245	53		2,135	-9		21,380	44	
12-31-05	19,192	117	97	2,144	7	12	21,336	124	109
11-30-05	19,075	32		2,137	9		21,212	41	
10-31-05	19,043	43		2,128	13		21,171	56	
09-30-05	19,000	71		2,115	-7		21,115	64	
08-31-05	18,929	183		2,122	19		21,051	202	
07-31-05	18,746	115		2,103	30		20,849	145	
06-30-05	18,631		68	2,073		27	20,704		95
06-30-04	17,814		49	1,755		11	19,569		60
06-30-03	17,226		57	1,620		10	18,846		67
06-30-02	16,539		87	1,506		14	18,045		101
06-30-01	15,493		63	1,340		6	16,833		70
06-30-00	14,733		99	1,266		7	15,999		106
06-30-99	13,547		75	1,179		14	14,726		89
06-30-98	12,647		81	1,016		9	13,663		89
06-30-97	11,681			909			12,590		

(1) Adult inmate jurisdictional population includes on-grounds, off-grounds, out-of-state, escapees, and jail backlog and excludes offenders sentenced to the Youthful Offender System (Y.O.S.).

COLORADO DEPARTMENT OF CORRECTIONS
ADULT INMATE RELEASES FROM PRISON
TOTAL Population (Male and Female)

Date: 9/5/2007

	Parole				Discharge					Other				Total
	Discretionary*	Mandatory*	Mand. Repar.*	Com. Supv.	Sentence	H.B. 1087	Martin/Cooper	Chgs/Det.	Com Spv. Elim	Probation	Ct. Ord. Dsch.	Appeal Bond	Deceased	
Aug-07	457	192	114	0	34	54	8	21	0	16	14	0	5	915
Jul-07	423	196	115	0	34	58	6	22	0	7	10	0	4	875
Jun-07	433	188	92	0	19	49	13	11	0	9	8	0	2	824
May-07	499	216	129	0	31	43	7	20	0	14	9	0	4	972
Apr-07	447	197	100	0	26	51	9	16	0	6	10	0	6	868
Mar-07	415	187	140	0	33	64	4	14	0	14	13	1	3	888
Feb-07	405	235	80	0	24	58	12	19	0	15	5	0	0	853
Jan-07	542	192	42	0	37	59	5	15	0	15	16	0	9	932
Dec-06	349	179	59	0	27	44	10	14	0	13	6	1	2	704
Nov-06	422	202	70	0	30	45	12	12	0	16	11	0	6	826
Oct-06	426	186	84	0	36	44	11	10	0	6	7	1	5	816
Sep-06	348	180	65	0	29	44	13	15	0	13	7	0	2	716
Aug-06	430	239	104	0	37	52	10	21	0	17	11	0	2	923
Jul-06	350	174	87	0	43	52	9	20	0	17	6	0	7	765
Jun-06	375	199	89	0	37	43	10	16	0	16	7	0	2	794
May-06	317	235	75	0	34	52	10	15	0	13	9	0	3	763
Apr-06	227	235	91	0	41	54	17	17	0	10	7	0	8	707
Mar-06	305	282	113	0	39	46	10	12	0	18	5	1	2	833
Feb-06	305	250	71	0	34	39	13	10	0	27	14	0	1	764
Jan-06	316	218	75	0	45	51	11	14	0	13	6	0	7	756
Dec-05	235	238	98	0	51	47	15	17	0	18	12	0	6	737
Nov-05	183	297	126	0	37	55	7	13	0	10	18	0	5	751
Oct-05	157	304	130	0	34	58	11	19	0	17	10	1	5	746
Sep-05	142	318	90	0	30	61	17	14	0	23	6	0	3	704

Definitions of Release Types

Discretionary parole-Released to parole through Parole Board discretion prior to mandatory release or sentence discharge date.

Mandatory parole-Released to parole on mandatory release date.

Mand. Repar-Reparoled on specific date set by Parole Board (includes S.B. 252 reparoles). n/a - breakout not available prior to June 2004.

Com. Supv.-Released to serve 12 months of community supervision.

Sentence discharge-Completion of sentence with no further supervision.

H.B. 1087 discharge-Completion of sentence with no further supervision, subject to earn time provisions of H.B. 95-1087.

Martin/ Cooper discharge-Completion of sentence with no further supervision, sex offender subject to Martin/Cooper Supreme Court decision.

Chgs/ Det. discharge-Completion of sentence, released to other law enforcement for pending charges or detainees.

Com. Spv. Elim discharge-Completion of sentence following reincarceration on community supervision sentence.

Probation-Released by court to probation.

Ct. Ord. Dsch.-Released by court order.

Appeal Bond-Released by court to appeal bond.

Deceased-Offender death in prison.

*Due to the decrease in community transportation services, the Department implemented a procedural change in December 2005 with regards to releasing inmates on weekends. As a result of this change, discretionary releases have increased and mandatory releases have decreased.

COLORADO DEPARTMENT OF CORRECTIONS

ADULT INMATE RELEASES FROM PRISON

Male Population Only

Date: 9/5/2007

	Parole				Discharge					Other				Total
	Discretionary*	Mandatory*	Mand. Repar.*	Com. Supv.	Sentence	H.B. 1087	Martin/Cooper	Chgs/Det.	Com Spv. Elim	Probation	Ct. Ord. Dsch.	Appeal Bond	Deceased	
Aug-07	377	170	104	0	29	46	8	20	0	14	10	0	5	783
Jul-07	360	171	94	0	34	52	6	20	0	7	6	0	4	754
Jun-07	366	172	79	0	18	45	12	11	0	8	8	0	2	721
May-07	432	194	110	0	30	37	7	18	0	11	9	0	3	851
Apr-07	382	179	90	0	24	47	8	15	0	4	8	0	6	763
Mar-07	344	166	118	0	28	56	4	14	0	10	13	0	3	756
Feb-07	330	209	71	0	23	51	11	16	0	14	5	0	0	730
Jan-07	453	169	37	0	34	53	5	15	0	14	13	0	7	800
Dec-06	298	160	56	0	24	38	10	14	0	13	6	1	2	622
Nov-06	358	178	62	0	28	42	12	12	0	13	10	0	6	721
Oct-06	373	163	73	0	34	36	11	9	0	6	6	1	5	717
Sep-06	300	148	59	0	29	40	13	12	0	12	7	0	2	622
Aug-06	364	209	89	0	34	44	10	21	0	14	10	0	2	797
Jul-06	310	158	72	0	40	45	9	18	0	15	4	0	7	678
Jun-06	325	180	74	0	32	41	10	13	0	15	6	0	2	698
May-06	269	202	60	0	33	47	10	15	0	12	8	0	3	659
Apr-06	178	213	79	0	35	47	17	16	0	9	6	0	8	608
Mar-06	267	246	100	0	36	41	10	12	0	14	5	1	2	734
Feb-06	253	220	63	0	33	37	13	10	0	25	14	0	1	669
Jan-06	266	187	63	0	43	48	11	13	0	12	5	0	6	654
Dec-05	193	204	84	0	48	43	15	17	0	16	11	0	4	635
Nov-05	156	251	114	0	32	47	7	12	0	10	17	0	4	650
Oct-05	127	273	101	0	32	50	11	17	0	15	10	1	4	641
Sep-05	111	283	78	0	26	57	16	12	0	22	6	0	3	614

Definitions of Release Types

Discretionary parole-Released to parole through Parole Board discretion prior to mandatory release or sentence discharge date.

Mandatory parole-Released to parole on mandatory release date.

Mand. Repar-Reparoled on specific date set by Parole Board (includes S.B. 252 reparoles). n/a - breakout not available prior to June 2004.

Com. Supv.-Released to serve 12 months of community supervision.

Sentence discharge-Completion of sentence with no further supervision.

H.B. 1087 discharge-Completion of sentence with no further supervision, subject to earn time provisions of H.B. 95-1087.

Martin/ Cooper discharge-Completion of sentence with no further supervision, sex offender subject to Martin/Cooper Supreme Court decision.

Chgs/ Det. discharge-Completion of sentence, released to other law enforcement for pending charges or detainees.

Com. Spv. Elim discharge-Completion of sentence following reincarceration on community supervision sentence.

Probation-Released by court to probation.

Ct. Ord. Dsch.-Released by court order.

Appeal Bond-Released by court to appeal bond.

Deceased-Offender death in prison.

***Due to the decrease in community transportation services, the Department implemented a procedural change in December 2005 with regards to releasing inmates on weekends. As a result of this change, discretionary releases have increased and mandatory releases have decreased.**

COLORADO DEPARTMENT OF CORRECTIONS
ADULT INMATE RELEASES FROM PRISON
Female Population Only

Date: 9/5/2007

	Parole				Discharge					Other				Total
	Discretionary*	Mandatory*	Mand. Repar.*	Com. Supv.	Sentence	H.B. 1087	Martin/Cooper	Chgs/Det.	Com Spv. Elim	Probation	Ct. Ord. Dsch.	Appeal Bond	Deceased	
Aug-07	80	22	10	0	5	8	0	1	0	2	4	0	0	132
Jul-07	63	25	21	0	0	6	0	2	0	0	4	0	0	121
Jun-07	67	16	13	0	1	4	1	0	0	1	0	0	0	103
May-07	67	22	19	0	1	6	0	2	0	3	0	0	1	121
Apr-07	65	18	10	0	2	4	1	1	0	2	2	0	0	105
Mar-07	71	21	22	0	5	8	0	0	0	4	0	1	0	132
Feb-07	75	26	9	0	1	7	1	3	0	1	0	0	0	123
Jan-07	89	23	5	0	3	6	0	0	0	1	3	0	2	132
Dec-06	51	19	3	0	3	6	0	0	0	0	0	0	0	82
Nov-06	64	24	8	0	2	3	0	0	0	3	1	0	0	105
Oct-06	53	23	11	0	2	8	0	1	0	0	1	0	0	99
Sep-06	48	32	6	0	0	4	0	3	0	1	0	0	0	94
Aug-06	66	30	15	0	3	8	0	0	0	3	1	0	0	126
Jul-06	40	16	15	0	3	7	0	2	0	2	2	0	0	87
Jun-06	50	19	15	0	5	2	0	3	0	1	1	0	0	96
May-06	48	33	15	0	1	5	0	0	0	1	1	0	0	104
Apr-06	49	22	12	0	6	7	0	1	0	1	1	0	0	99
Mar-06	38	36	13	0	3	5	0	0	0	4	0	0	0	99
Feb-06	52	30	8	0	1	2	0	0	0	2	0	0	0	95
Jan-06	50	31	12	0	2	3	0	1	0	1	1	0	1	102
Dec-05	42	34	14	0	3	4	0	0	0	2	1	0	2	102
Nov-05	27	46	12	0	5	8	0	1	0	0	1	0	1	101
Oct-05	30	31	29	0	2	8	0	2	0	2	0	0	1	105
Sep-05	31	35	12	0	4	4	1	2	0	1	0	0	0	90

Definitions of Release Types

Discretionary parole-Released to parole through Parole Board discretion prior to mandatory release or sentence discharge date.

Mandatory parole-Released to parole on mandatory release date.

Mand. Repar-Reparoled on specific date set by Parole Board (includes S.B. 252 reparoles). n/a - breakout not available prior to June 2004.

Com. Supv.-Released to serve 12 months of community supervision.

Sentence discharge-Completion of sentence with no further supervision.

H.B. 1087 discharge-Completion of sentence with no further supervision, subject to earn time provisions of H.B. 95-1087.

Martin/ Cooper discharge-Completion of sentence with no further supervision, sex offender subject to Martin/Cooper Supreme Court decision.

Chgs/ Det. discharge-Completion of sentence, released to other law enforcement for pending charges or detainees.

Com. Spv. Elim discharge-Completion of sentence following reincarceration on community supervision sentence.

Probation-Released by court to probation.

Ct. Ord. Dsch.-Released by court order.

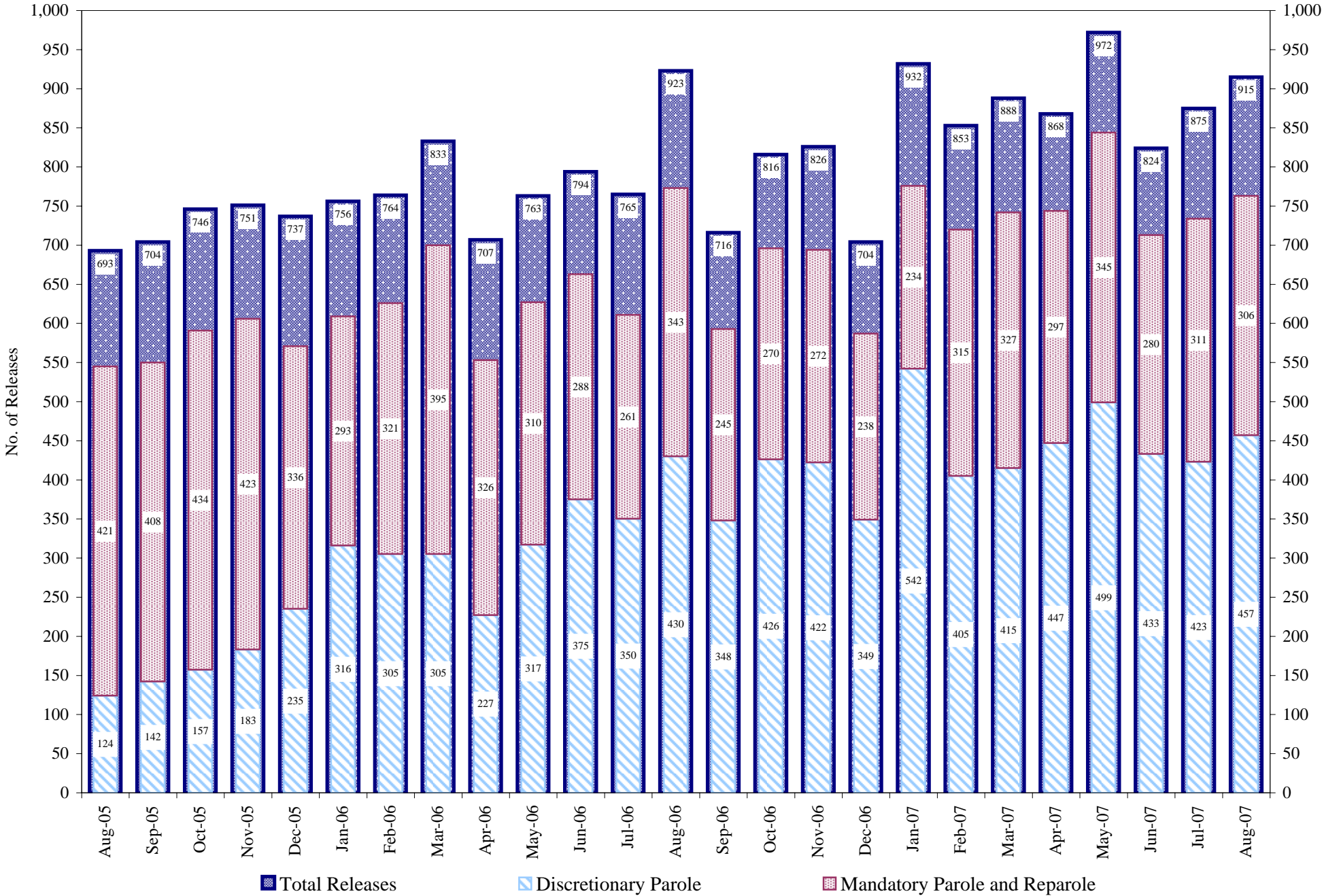
Appeal Bond-Released by court to appeal bond.

Deceased-Offender death in prison.

*Due to the decrease in community transportation services, the Department implemented a procedural change in December 2005 with regards to releasing inmates on weekends. As a result of this change, discretionary releases have increased and mandatory releases have decreased.

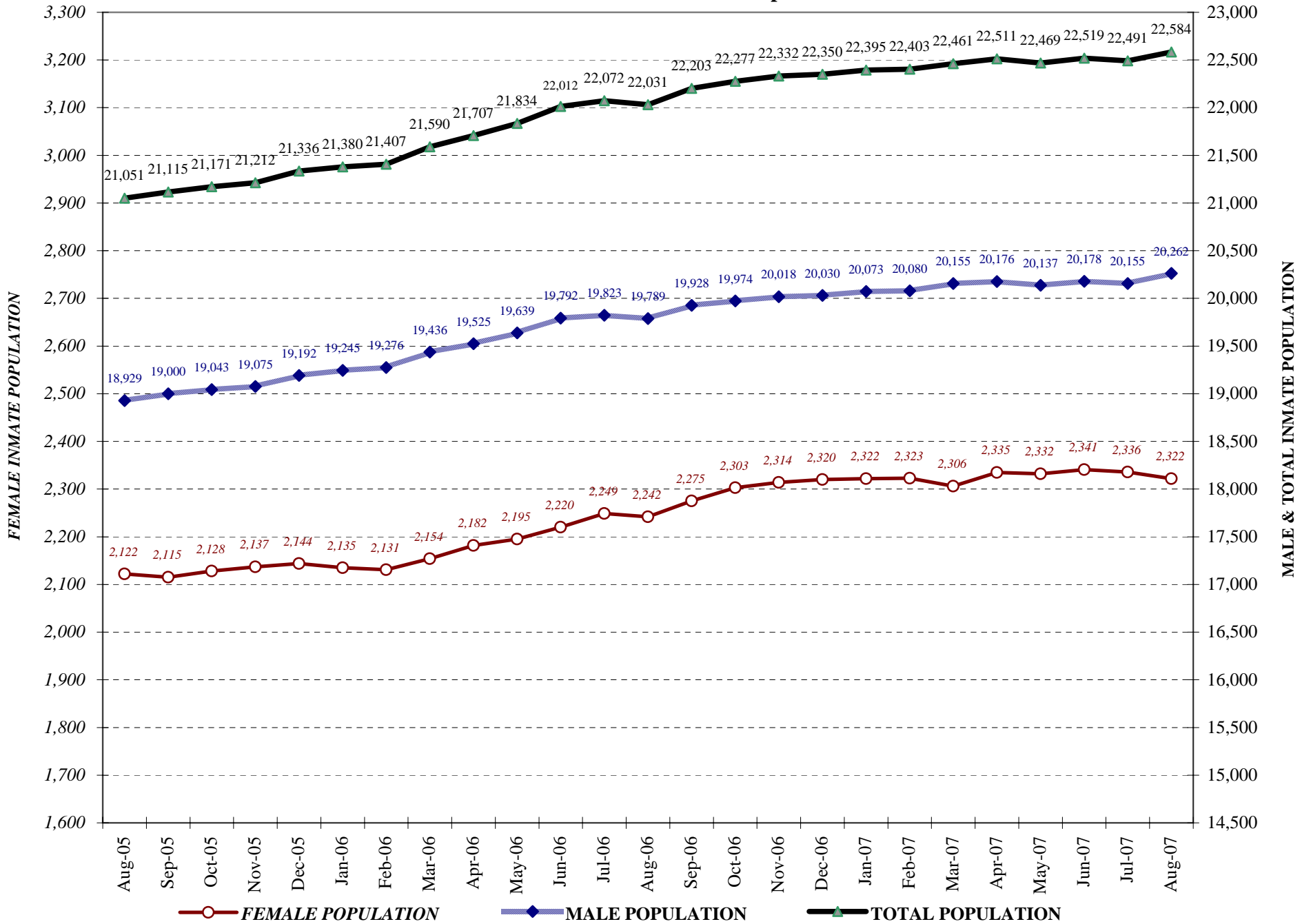
COLORADO DEPARTMENT OF CORRECTIONS

Adult Prison Releases

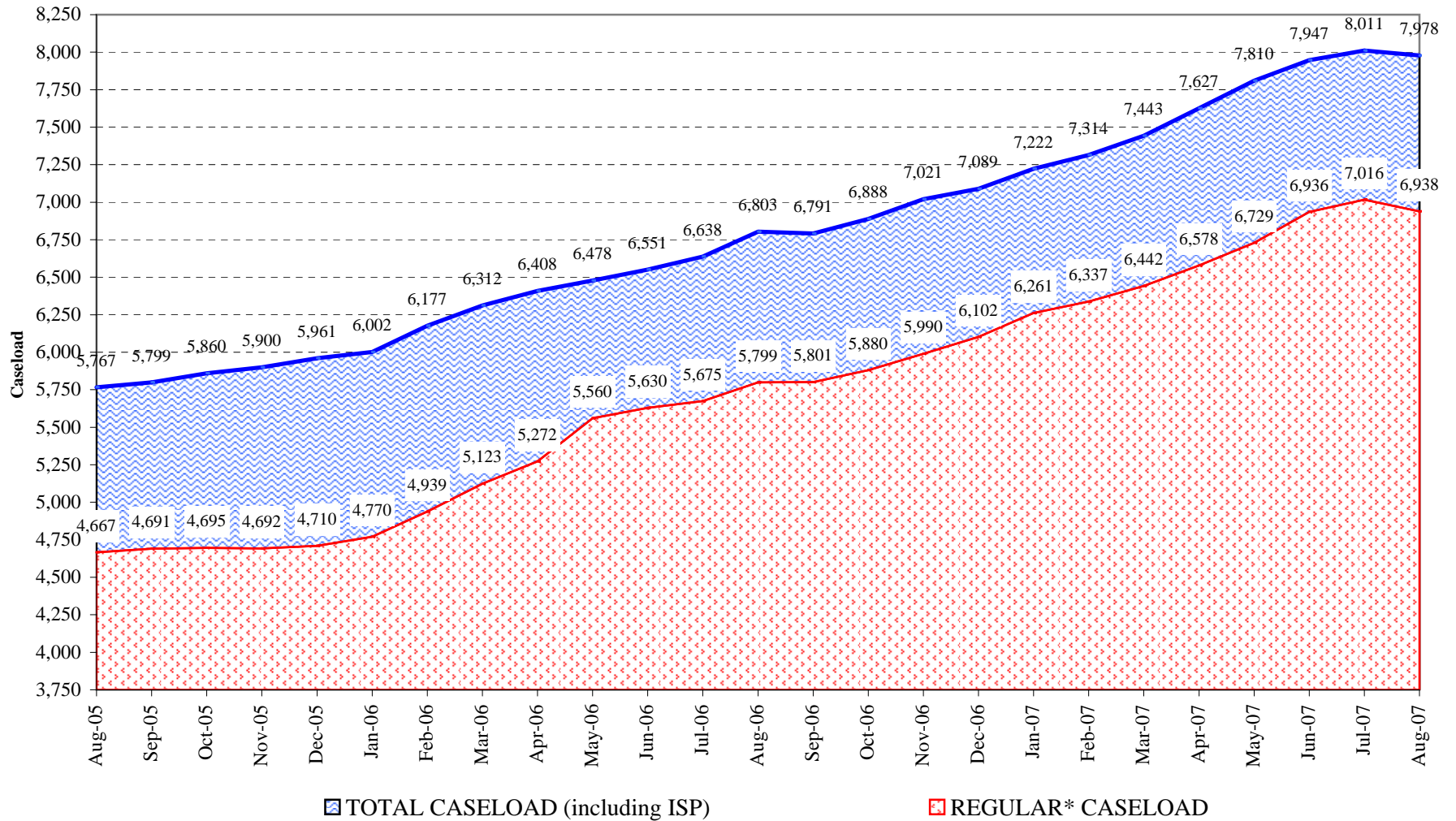


Total releases include releases to discretionary parole, mandatory parole and reparole, all types of discharges and other releases as detailed on the previous page.

COLORADO DEPARTMENT OF CORRECTIONS Adult Jurisdiction Inmate Population



COLORADO DEPARTMENT OF CORRECTIONS Parole Population



* Regular caseload includes interstate parole, but excludes out-of-state parolees and absconders.