

**COLORADO DEPARTMENT OF CORRECTIONS  
MONTHLY POPULATION AND CAPACITY REPORT  
AS OF JULY 31, 2007**

13-Aug-07

	06/30/07	CAPACITY CHANGES	------ 07/31/07 -----		------ 07/31/06 -----	
	OPERATIONAL CAPACITY*		OPERATIONAL CAPACITY*	ON-GRDS POPULATION	OPERATIONAL CAPACITY*	ON-GRDS POPULATION
COLO STATE PENITENTIARY	756		756	751	756	747
CENTENNIAL CORR FAC	336		336	318	336	325
STERLING CORR FAC	2,545		2,545	2,490	2,445	2,410
LIMON CORR FAC	953		953	935	953	947
ARK VALLEY CORR FAC	1,007		1,007	998	1,007	1,000
BUENA VISTA CORR FAC	926		926	899	826	824
BUENA VISTA MIN CTR	292		292	272	292	288
COLO TERR CORR FAC	786		786	805	786	792
FORT LYON CORR FAC	500		500	478	500	486
FREMONT CORR FAC	1,471		1,471	1,470	1,471	1,468
LA VISTA CORR FAC	519		519	496	303	283
ARROWHEAD CORR CTR	494		494	491	494	488
FOUR MILE CORR CTR	499		499	492	499	497
PUEBLO MINIMUM CTR	0		0	0	0	0
TRINIDAD CORR FAC	484		484	475	484	481
S.T.U. at Y.O.S.	30		30	27	30	28
SKYLINE CORR CTR	249		249	244	249	248
COLORADO CORR CTR	150		150	149	150	148
DELTA CORR CTR	484		484	457	484	477
RIFLE CORR CTR	192		192	182	192	188
COLO CORR ALT PROGRAM	100		100	100	100	126
COLO WOMEN'S CORR FAC	224		224	209	224	219
DENVER WOMEN'S CORR FAC	900		900	781	900	894
DENVER REC DIAG CTR	480		480	440	480	500
SAN CARLOS CORR FAC	255		255	248	255	251
<b>***SUBTOTAL***</b>	<b>14,632</b>	<b>0</b>	<b>14,632</b>	<b>14,207</b>	<b>14,216</b>	<b>14,115</b>
<b>CONTRACTS:</b>						
BENT COUNTY CORR CTR	724		724	691	724	721
HUERFANO COUNTY CORR CTR	774		774	740	774	769
CROWLEY COUNTY CORR FAC	1,720		1,720	1,561	1,754	1,352
KIT CARSON COUNTY CORR FAC	820		820	793	824	808
CHEYENNE MTN REENTRY CTR	500		500	492	500	478
HIGH PLAINS CORR FAC	270		270	236	270	256
NORTH FORK OK CORR FAC	480		480	479	0	0
<b>OFF-GROUNDS POPULATION:</b>						
ESCAPEES/WALKAWAYS				259		196
REVOCATIONS-JAIL				229		268
				1		1
<b>JAIL BACKLOG:</b>						
BACKLOG LESS THAN 72 HOURS			47		139	
BACKLOG GREATER THAN 72 HOURS (FISCAL YTD AVE = 67)			0		281	
BACKLOG-PAROLEES AWAITING TRANSFER			22		82	
<b>TOTAL JAIL BACKLOG</b>				69		502
<b>COUNTY JAIL CONTRACTS</b>				84		63
<b>COMMUNITY CORRECTIONS</b>						
<b>COMMUNITY</b>						
RESIDENTIAL	1,393	38	1,431	1,431	1,317	1,317
PAROLE REVOCATIONS	0	1	1	1	1	1
REVOKED-RET TO CUST	235	10	245	245	210	210
NON-RESIDENTIAL	38	33	71	71	66	66
REGRESSIONS	45	-19	26	26	52	52
<b>TOTAL COMMUNITY</b>	<b>1,711</b>	<b>63</b>	<b>1,774</b>	<b>1,774</b>	<b>1,646</b>	<b>1,646</b>
<b>ISP</b>						
RESIDENTIAL	842	-5	837	837	845	845
NON-RESIDENTIAL	22	13	35	35	42	42
REGRESSIONS	5	-1	4	4	10	10
<b>TOTAL ISP</b>	<b>869</b>	<b>7</b>	<b>876</b>	<b>876</b>	<b>897</b>	<b>897</b>
<b>TOTAL COMM. CORRECTIONS</b>	<b>2,580</b>	<b>70</b>	<b>2,650</b>	<b>2,650</b>	<b>2,543</b>	<b>2,543</b>
MALE POPULATION			<b>20,155</b>		19,823	
FEMALE POPULATION			<b>2,336</b>		2,249	
<b>**TOTAL INMATE JURISDICTIONAL POPULATION**</b>				<b>22,491</b>		<b>22,072</b>

\*OPERATIONAL CAPACITY INCLUDES ALL BEDS AVAILABLE FOR USE, INCLUDING MANAGEMENT CONTROL UNITS, BUT EXCLUDES EMERGENCY DOUBLE BUNKING

**COLORADO DEPARTMENT OF CORRECTIONS**  
**MONTHLY POPULATION AND CAPACITY REPORT**  
**AS OF JULY 31, 2007**

13-Aug-07

**CURRENT MONTH CHANGES IN CAPACITY:**

Jul-07 BRUSH CORR FACILITY CHANGED TO HIGH PLAINS CORR FACILITY

**NET MONTHLY GROWTH RATE:**

CURRENT MONTH	-28
FISCAL YEAR-TO-DATE AVERAGE	-28

**YOUTHFUL OFFENDER SYSTEM**

	----- 07/31/07 -----				07/31/06
	PUEBLO	CONTRACT FACILITIES	COMM. CORR.	TOTAL POPULATION	TOTAL POPULATION
INTAKE/IDO	5			5	19
RFP/REMEDICATION	14			14	2
PHASE I	148	0		148	154
PHASE II	13			13	-- *
PHASE III	2		26	28	41
OFF GROUNDS/BACKLOG				2	8
<b>**TOTAL Y.O.S. POPULATION**</b>	<b>182</b>	<b>0</b>	<b>26</b>	<b>210</b>	<b>224</b>

\*Phase II included in Phase I.

	CURRENT MONTH	FISCAL YR. TO DATE
YOS ADMISSIONS	5	5
YOS RELEASES:		
COMPLETION OF SENTENCE	3	3
JUDICIAL RELEASE TO PROB/CT ORD DISCHG	1	1
JUDICIAL TRANSFER TO DOC	0	0
TERMINATION/FAILURE	0	0
DECEASED	0	0
TOTAL RELEASES	4	4

**PAROLE CASELOAD**

	----- 07/31/07 -----			----- 06/30/07 -----		----- 07/31/06 -----	
	DOMESTIC	INTERST PAR/PROB	TOTAL CASELOAD	DOMESTIC	TOTAL CASELOAD	DOMESTIC	TOTAL CASELOAD
DENVER REGION							
REGULAR	2,537	111	2,648	2,510	2,617	2,090	2,188
ISP	458		458	473	473	450	450
SUBTOTAL	2,995	111	3,106	2,983	3,090	2,540	2,638
NORTHEAST REGION							
REGULAR	1,831	47	1,878	1,800	1,846	1,440	1,485
ISP	219		219	206	206	230	230
SUBTOTAL	2,050	47	2,097	2,006	2,052	1,670	1,715
SOUTHEAST REGION							
REGULAR	1,655	92	1,747	1,639	1,731	1,289	1,368
ISP	236		236	242	242	214	214
SUBTOTAL	1,891	92	1,983	1,881	1,973	1,503	1,582
WESTERN REGION							
REGULAR	702	41	743	701	742	593	634
ISP	82		82	90	90	69	69
SUBTOTAL	784	41	825	791	832	662	703
TOTAL CASELOAD							
REGULAR	6,725	291	7,016	6,650	6,936	5,412	5,675
ISP	995		995	1,011	1,011	963	963
TOTAL	7,720	291	8,011	7,661	7,947	6,375	6,638
ADDITIONAL CASELOAD:							
OUT-OF-STATE PAROLEES			1,839		1,815		1,683
PAROLEE ABSCONDERS			800		781		635

**COLORADO DEPARTMENT OF CORRECTIONS**  
**MONTHLY POPULATION AND CAPACITY REPORT**  
AS OF JULY 31, 2007

	07/31/2007 Population			----- FINAL CUSTODY DESIGNATION* -----					
	On-Grds.	Off-Grds	Total	Uncls.	Ad.Seg	Close	Medium	Min.-Res.	Minimum
COLO STATE PENITENTIARY	751	2	753			743	10		
CENTENNIAL CORR FAC	318	0	318			40	274	3	1
STERLING CORR FAC	2,490	28	2,518			242	771	493	586
LIMON CORR FAC	935	8	943			15	678	182	53
ARK VALLEY CORR FAC	998	17	1,015			5	466	315	166
BUENA VISTA CORR FAC	899	17	916			16	342	340	145
BUENA VISTA MIN CTR	272	15	287			0	0	2	209
COLO TERR CORR FAC	804	9	813			7	168	259	224
FORT LYON CORR FAC	478	10	488			1	38	224	153
FREMONT CORR FAC	1,470	14	1,484			19	166	387	561
ARROWHEAD CORR CTR	491	2	493				1	5	281
FOUR MILE CORR CTR	492	7	499					1	332
TRINIDAD CORR FAC	475	6	481					4	415
S.T.U. at Y.O.S.	27	3	30					6	23
SKYLINE CORR CTR	244	0	244						
COLORADO CORR CTR	149	0	149						2
DELTA CORR CTR	457	4	461					1	4
RIFLE CORR CTR	182	2	184						
COLO CORR ALT PROGRAM	96	10	106						2
DENVER REC DIAG CTR	439	7	446	120	7	44	116	104	55
SAN CARLOS CORR FAC	248	5	253		25	102	53	42	31
CONTRACTS:									
BENT COUNTY CORR CTR	691	12	703			0	6	364	207
HUERFANO COUNTY CORR CTR	740	11	751			4	6	383	211
CROWLEY COUNTY CORR FAC	1,561	30	1,591			5	5	839	512
KIT CARSON COUNTY CORR FAC	793	12	805			1	8	434	233
CHEYENNE MTN REENTRY CTR	492	2	494			0	2	113	245
NORTH FORK OK CORR FAC	479	0	479			0	5	225	189
COMMUNITY/ISP	1,788	86	1,874	3		5	43	76	1,747
<b>Total Classified Male Population</b>	<b>19,259</b>	<b>319</b>	<b>19,578</b>	<b>123</b>	<b>1,130</b>	<b>3,097</b>	<b>4,792</b>	<b>4,976</b>	<b>5,460</b>
<b>Percent of Total</b>				<b>0.6%</b>	<b>5.8%</b>	<b>15.8%</b>	<b>24.5%</b>	<b>25.4%</b>	<b>27.9%</b>
Unclassified Facilities:									
JAIL BACKLOG	60	0	60						
COUNTY JAIL CONTRACTS	82	2	84						
REVOKED TO JAIL	1	0	1						
REVOKED TO COMM CTR	1	0	1						
REVOKED-RET TO CUST FAC	165	42	207						
COMM/ISP REGRESSIONS	0	27	27						
ESCAPEES/WALKAWAYS	44	153	197						
<b>Total Unclassified Facilities</b>	<b>353</b>	<b>224</b>	<b>577</b>						
<b>Total Male Population</b>	<b>19,612</b>	<b>543</b>	<b>20,155</b>						
COLO WOMEN'S CORR FAC	209	1	210			35	30	69	76
DENVER WOMEN'S CORR FAC	781	15	796	13	18	115	113	321	216
LA VISTA CORR FAC	496	6	502			61	78	233	130
COLO CORR ALT PROGRAM	4	1	5					2	3
DENVER REC DIAG CTR INF	1	0	1		1				
COLO TERR CORR FAC INF.	1	0	1				1		
CONTRACTS:									
HIGH PLAINS CORR FAC	236	3	239					25	129
COMMUNITY/ISP	480	20	500			4	11	45	440
<b>Total Classified Female Population</b>	<b>2,208</b>	<b>46</b>	<b>2,254</b>	<b>13</b>	<b>19</b>	<b>215</b>	<b>258</b>	<b>799</b>	<b>950</b>
<b>Percent of Total</b>				<b>0.6%</b>	<b>0.8%</b>	<b>9.5%</b>	<b>11.4%</b>	<b>35.4%</b>	<b>42.1%</b>
Unclassified Facilities:									
JAIL BACKLOG	9	0	9						
COUNTY JAIL CONTRACTS	0	0	0						
REVOKED TO JAIL	0	0	0						
REVOKED TO COMM CTR	0	0	0						
REVOKED-RET TO CUST FAC	33	5	38						
COMM/ISP REGRESSIONS	0	3	3						
ESCAPEES/WALKAWAYS	2	30	32						
<b>Total Unclassified Facilities</b>	<b>44</b>	<b>38</b>	<b>82</b>						
<b>Total Female Population</b>	<b>2,252</b>	<b>84</b>	<b>2,336</b>						

Male Population

Female Population

**COLORADO DEPARTMENT OF CORRECTIONS**  
**ADULT INMATE JURISDICTIONAL POPULATION (1)**

DATE: 8/13/2007

DATE	MALE POPULATION			FEMALE POPULATION			TOTAL POPULATION		
	Male Population	Net Change	Fiscal Y-T-D Average	Female Population	Net Change	Fiscal Y-T-D Average	Total Population	Net Change	Fiscal Y-T-D Average
<b>07-31-07</b>	<b>20,155</b>	-23	<b>-23</b>	<b>2,336</b>	-5	<b>-5</b>	<b>22,491</b>	-28	<b>-28</b>
<b>06-30-07</b>	<b>20,178</b>	41		<b>2,341</b>	9		<b>22,519</b>	50	
05-31-07	20,137	-39		2,332	-3		22,469	-42	
04-30-07	20,176	21		2,335	29		22,511	50	
03-31-07	20,155	75		2,306	-17		22,461	58	
02-28-07	20,080	7		2,323	1		22,403	8	
01-31-07	20,073	43		2,322	2		22,395	45	
12-31-06	20,030	12	<b>32</b>	2,320	6	<b>10</b>	22,350	18	<b>42</b>
11-30-06	20,018	44		2,314	11		22,332	55	
10-31-06	19,974	46		2,303	28		22,277	74	
09-30-06	19,928	139		2,275	33		22,203	172	
08-31-06	19,789	-34		2,242	-7		22,031	-41	
07-31-06	19,823	31		2,249	29		22,072	60	
<b>06-30-06</b>	<b>19,792</b>	153		<b>2,220</b>	25		<b>22,012</b>	178	
05-31-06	19,639	114		2,195	13		21,834	127	
04-30-06	19,525	89		2,182	28		21,707	117	
03-31-06	19,436	160		2,154	23		21,590	183	
02-28-06	19,276	31		2,131	-4		21,407	27	
01-31-06	19,245	53		2,135	-9		21,380	44	
12-31-05	19,192	117	<b>97</b>	2,144	7	<b>12</b>	21,336	124	<b>109</b>
11-30-05	19,075	32		2,137	9		21,212	41	
10-31-05	19,043	43		2,128	13		21,171	56	
09-30-05	19,000	71		2,115	-7		21,115	64	
08-31-05	18,929	183		2,122	19		21,051	202	
07-31-05	18,746	115		2,103	30		20,849	145	
<b>06-30-05</b>	<b>18,631</b>		<b>68</b>	<b>2,073</b>		<b>27</b>	<b>20,704</b>		<b>95</b>
<b>06-30-04</b>	<b>17,814</b>		<b>49</b>	<b>1,755</b>		<b>11</b>	<b>19,569</b>		<b>60</b>
<b>06-30-03</b>	<b>17,226</b>		<b>57</b>	<b>1,620</b>		<b>10</b>	<b>18,846</b>		<b>67</b>
<b>06-30-02</b>	<b>16,539</b>		<b>87</b>	<b>1,506</b>		<b>14</b>	<b>18,045</b>		<b>101</b>
<b>06-30-01</b>	<b>15,493</b>		<b>63</b>	<b>1,340</b>		<b>6</b>	<b>16,833</b>		<b>70</b>
<b>06-30-00</b>	<b>14,733</b>		<b>99</b>	<b>1,266</b>		<b>7</b>	<b>15,999</b>		<b>106</b>
<b>06-30-99</b>	<b>13,547</b>		<b>75</b>	<b>1,179</b>		<b>14</b>	<b>14,726</b>		<b>89</b>
<b>06-30-98</b>	<b>12,647</b>		<b>81</b>	<b>1,016</b>		<b>9</b>	<b>13,663</b>		<b>89</b>
<b>06-30-97</b>	<b>11,681</b>			<b>909</b>			<b>12,590</b>		

(1) Adult inmate jurisdictional population includes on-grounds, off-grounds, out-of-state, escapees, and jail backlog and excludes offenders sentenced to the Youthful Offender System (Y.O.S.).

**COLORADO DEPARTMENT OF CORRECTIONS**  
**ADULT INMATE RELEASES FROM PRISON**  
**TOTAL Population (Male and Female)**

Date: 8/13/2007

	Parole				Discharge					Other				Total
	Discretionary*	Mandatory*	Mand. Repar.*	Com. Supv.	Sentence	H.B. 1087	Martin/Cooper	Chgs/Det.	Com Spv. Elim	Probation	Ct. Ord. Dsch.	Appeal Bond	Deceased	
Jul-07	423	196	115	0	34	58	6	22	0	7	10	0	4	875
Jun-07	433	188	92	0	19	49	13	11	0	9	8	0	2	824
May-07	499	216	129	0	31	43	7	20	0	14	9	0	4	972
Apr-07	447	197	100	0	26	51	9	16	0	6	10	0	6	868
Mar-07	415	187	140	0	33	64	4	14	0	14	13	1	3	888
Feb-07	405	235	80	0	24	58	12	19	0	15	5	0	0	853
Jan-07	542	192	42	0	37	59	5	15	0	15	16	0	9	932
Dec-06	349	179	59	0	27	44	10	14	0	13	6	1	2	704
Nov-06	422	202	70	0	30	45	12	12	0	16	11	0	6	826
Oct-06	426	186	84	0	36	44	11	10	0	6	7	1	5	816
Sep-06	348	180	65	0	29	44	13	15	0	13	7	0	2	716
Aug-06	430	239	104	0	37	52	10	21	0	17	11	0	2	923
Jul-06	350	174	87	0	43	52	9	20	0	17	6	0	7	765
Jun-06	375	199	89	0	37	43	10	16	0	16	7	0	2	794
May-06	317	235	75	0	34	52	10	15	0	13	9	0	3	763
Apr-06	227	235	91	0	41	54	17	17	0	10	7	0	8	707
Mar-06	305	282	113	0	39	46	10	12	0	18	5	1	2	833
Feb-06	305	250	71	0	34	39	13	10	0	27	14	0	1	764
Jan-06	316	218	75	0	45	51	11	14	0	13	6	0	7	756
Dec-05	235	238	98	0	51	47	15	17	0	18	12	0	6	737
Nov-05	183	297	126	0	37	55	7	13	0	10	18	0	5	751
Oct-05	157	304	130	0	34	58	11	19	0	17	10	1	5	746
Sep-05	142	318	90	0	30	61	17	14	0	23	6	0	3	704
Aug-05	124	312	109	0	33	47	17	20	0	14	11	0	6	693

Definitions of Release Types

**Discretionary parole**-Released to parole through Parole Board discretion prior to mandatory release or sentence discharge date.

**Mandatory parole**-Released to parole on mandatory release date.

**Mand. Repar**-Reparoled on specific date set by Parole Board (includes S.B. 252 reparoles). n/a - breakout not available prior to June 2004.

**Com. Supv.**-Released to serve 12 months of community supervision.

**Sentence discharge**-Completion of sentence with no further supervision.

**H.B. 1087 discharge**-Completion of sentence with no further supervision, subject to earn time provisions of H.B. 95-1087.

**Martin/ Cooper discharge**-Completion of sentence with no further supervision, sex offender subject to Martin/Cooper Supreme Court decision.

**Chgs/ Det. discharge**-Completion of sentence, released to other law enforcement for pending charges or detainees.

**Com. Spv. Elim discharge**-Completion of sentence following reincarceration on community supervision sentence.

**Probation**-Released by court to probation.

**Ct. Ord. Dsch.**-Released by court order.

**Appeal Bond**-Released by court to appeal bond.

**Deceased**-Offender death in prison.

**\*Due to the decrease in community transportation services, the Department implemented a procedural change in December 2005 with regards to releasing inmates on weekends. As a result of this change, discretionary releases have increased and mandatory releases have decreased.**

**COLORADO DEPARTMENT OF CORRECTIONS**  
**ADULT INMATE RELEASES FROM PRISON**  
**Male Population Only**

Date: 8/13/2007

	Parole				Discharge					Other				Total
	Discretionary*	Mandatory*	Mand. Repar.*	Com. Supv.	Sentence	H.B. 1087	Martin/Cooper	Chgs/Det.	Com Spv. Elim	Probation	Ct. Ord. Dsch.	Appeal Bond	Deceased	
Jul-07	360	171	94	0	34	52	6	20	0	7	6	0	4	754
Jun-07	366	172	79	0	18	45	12	11	0	8	8	0	2	721
May-07	432	194	110	0	30	37	7	18	0	11	9	0	3	851
Apr-07	382	179	90	0	24	47	8	15	0	4	8	0	6	763
Mar-07	344	166	118	0	28	56	4	14	0	10	13	0	3	756
Feb-07	330	209	71	0	23	51	11	16	0	14	5	0	0	730
Jan-07	453	169	37	0	34	53	5	15	0	14	13	0	7	800
Dec-06	298	160	56	0	24	38	10	14	0	13	6	1	2	622
Nov-06	358	178	62	0	28	42	12	12	0	13	10	0	6	721
Oct-06	373	163	73	0	34	36	11	9	0	6	6	1	5	717
Sep-06	300	148	59	0	29	40	13	12	0	12	7	0	2	622
Aug-06	364	209	89	0	34	44	10	21	0	14	10	0	2	797
Jul-06	310	158	72	0	40	45	9	18	0	15	4	0	7	678
Jun-06	325	180	74	0	32	41	10	13	0	15	6	0	2	698
May-06	269	202	60	0	33	47	10	15	0	12	8	0	3	659
Apr-06	178	213	79	0	35	47	17	16	0	9	6	0	8	608
Mar-06	267	246	100	0	36	41	10	12	0	14	5	1	2	734
Feb-06	253	220	63	0	33	37	13	10	0	25	14	0	1	669
Jan-06	266	187	63	0	43	48	11	13	0	12	5	0	6	654
Dec-05	193	204	84	0	48	43	15	17	0	16	11	0	4	635
Nov-05	156	251	114	0	32	47	7	12	0	10	17	0	4	650
Oct-05	127	273	101	0	32	50	11	17	0	15	10	1	4	641
Sep-05	111	283	78	0	26	57	16	12	0	22	6	0	3	614
Aug-05	98	280	94	0	31	41	17	19	0	12	8	0	6	606

Definitions of Release Types

**Discretionary parole**-Released to parole through Parole Board discretion prior to mandatory release or sentence discharge date.

**Mandatory parole**-Released to parole on mandatory release date.

**Mand. Repar**-Reparoled on specific date set by Parole Board (includes S.B. 252 reparoles). n/a - breakout not available prior to June 2004.

**Com. Supv.**-Released to serve 12 months of community supervision.

**Sentence discharge**-Completion of sentence with no further supervision.

**H.B. 1087 discharge**-Completion of sentence with no further supervision, subject to earn time provisions of H.B. 95-1087.

**Martin/ Cooper discharge**-Completion of sentence with no further supervision, sex offender subject to Martin/Cooper Supreme Court decision.

**Chgs/ Det. discharge**-Completion of sentence, released to other law enforcement for pending charges or detainees.

**Com. Spv. Elim discharge**-Completion of sentence following reincarceration on community supervision sentence.

**Probation**-Released by court to probation.

**Ct. Ord. Dsch.**-Released by court order.

**Appeal Bond**-Released by court to appeal bond.

**Deceased**-Offender death in prison.

**\*Due to the decrease in community transportation services, the Department implemented a procedural change in December 2005 with regards to releasing inmates on weekends. As a result of this change, discretionary releases have increased and mandatory releases have decreased.**

**COLORADO DEPARTMENT OF CORRECTIONS**  
**ADULT INMATE RELEASES FROM PRISON**  
**Female Population Only**

Date: 8/13/2007

	Parole				Discharge					Other				Total
	Discretionary*	Mandatory*	Mand. Repar.*	Com. Supv.	Sentence	H.B. 1087	Martin/Cooper	Chgs/Det.	Com Spv. Elim	Probation	Ct. Ord. Dsch.	Appeal Bond	Deceased	
Jul-07	63	25	21	0	0	6	0	2	0	0	4	0	0	121
Jun-07	67	16	13	0	1	4	1	0	0	1	0	0	0	103
May-07	67	22	19	0	1	6	0	2	0	3	0	0	1	121
Apr-07	65	18	10	0	2	4	1	1	0	2	2	0	0	105
Mar-07	71	21	22	0	5	8	0	0	0	4	0	1	0	132
Feb-07	75	26	9	0	1	7	1	3	0	1	0	0	0	123
Jan-07	89	23	5	0	3	6	0	0	0	1	3	0	2	132
Dec-06	51	19	3	0	3	6	0	0	0	0	0	0	0	82
Nov-06	64	24	8	0	2	3	0	0	0	3	1	0	0	105
Oct-06	53	23	11	0	2	8	0	1	0	0	1	0	0	99
Sep-06	48	32	6	0	0	4	0	3	0	1	0	0	0	94
Aug-06	66	30	15	0	3	8	0	0	0	3	1	0	0	126
Jul-06	40	16	15	0	3	7	0	2	0	2	2	0	0	87
Jun-06	50	19	15	0	5	2	0	3	0	1	1	0	0	96
May-06	48	33	15	0	1	5	0	0	0	1	1	0	0	104
Apr-06	49	22	12	0	6	7	0	1	0	1	1	0	0	99
Mar-06	38	36	13	0	3	5	0	0	0	4	0	0	0	99
Feb-06	52	30	8	0	1	2	0	0	0	2	0	0	0	95
Jan-06	50	31	12	0	2	3	0	1	0	1	1	0	1	102
Dec-05	42	34	14	0	3	4	0	0	0	2	1	0	2	102
Nov-05	27	46	12	0	5	8	0	1	0	0	1	0	1	101
Oct-05	30	31	29	0	2	8	0	2	0	2	0	0	1	105
Sep-05	31	35	12	0	4	4	1	2	0	1	0	0	0	90
Aug-05	26	32	15	0	2	6	0	1	0	2	3	0	0	87

Definitions of Release Types

**Discretionary parole**-Released to parole through Parole Board discretion prior to mandatory release or sentence discharge date.

**Mandatory parole**-Released to parole on mandatory release date.

**Mand. Repar**-Reparoled on specific date set by Parole Board (includes S.B. 252 reparoles). n/a - breakout not available prior to June 2004.

**Com. Supv.**-Released to serve 12 months of community supervision.

**Sentence discharge**-Completion of sentence with no further supervision.

**H.B. 1087 discharge**-Completion of sentence with no further supervision, subject to earn time provisions of H.B. 95-1087.

**Martin/ Cooper discharge**-Completion of sentence with no further supervision, sex offender subject to Martin/Cooper Supreme Court decision.

**Chgs/ Det. discharge**-Completion of sentence, released to other law enforcement for pending charges or detainees.

**Com. Spv. Elim discharge**-Completion of sentence following reincarceration on community supervision sentence.

**Probation**-Released by court to probation.

**Ct. Ord. Dsch.**-Released by court order.

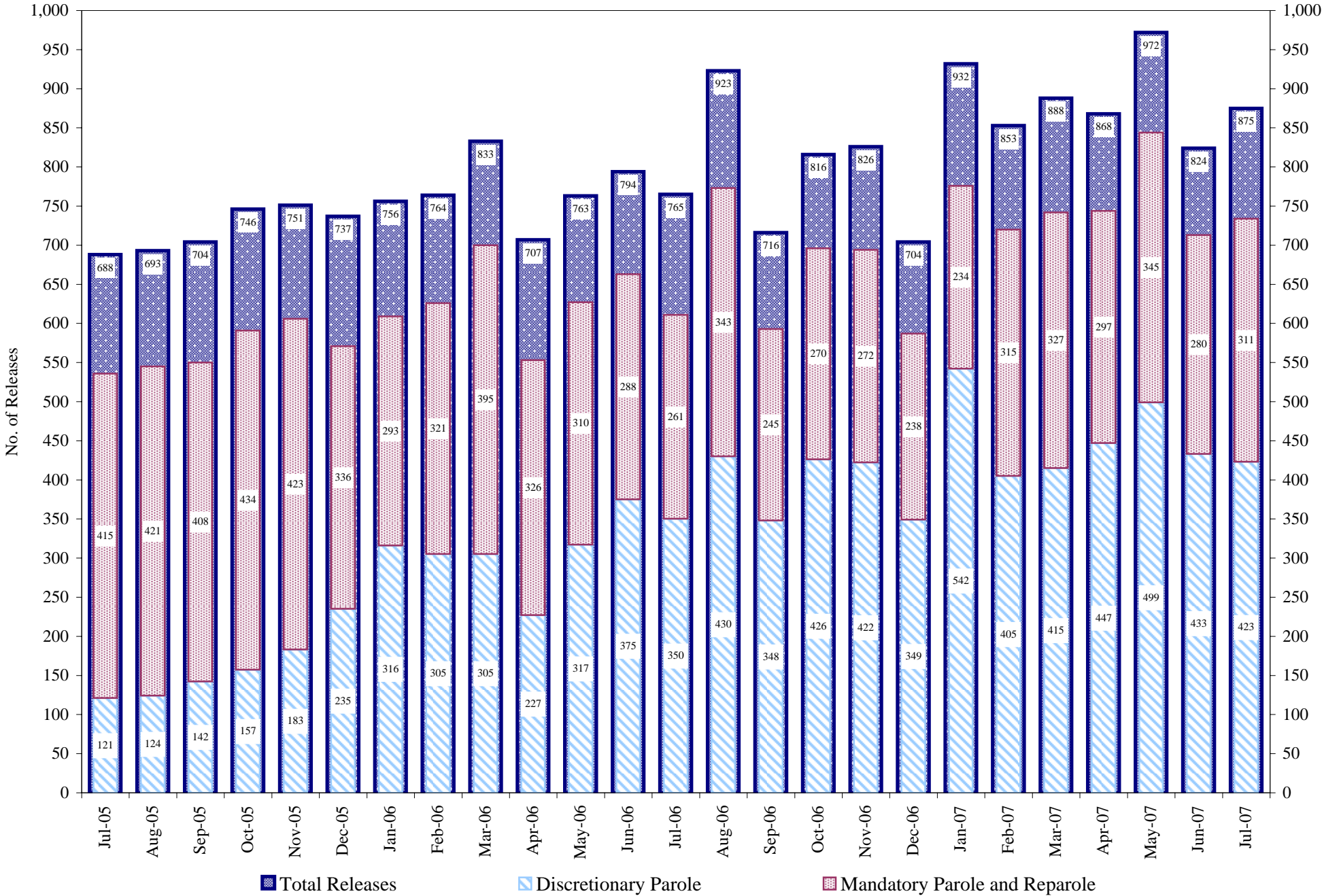
**Appeal Bond**-Released by court to appeal bond.

**Deceased**-Offender death in prison.

\*Due to the decrease in community transportation services, the Department implemented a procedural change in December 2005 with regards to releasing inmates on weekends. As a result of this change, discretionary releases have increased and mandatory releases have decreased.

# COLORADO DEPARTMENT OF CORRECTIONS

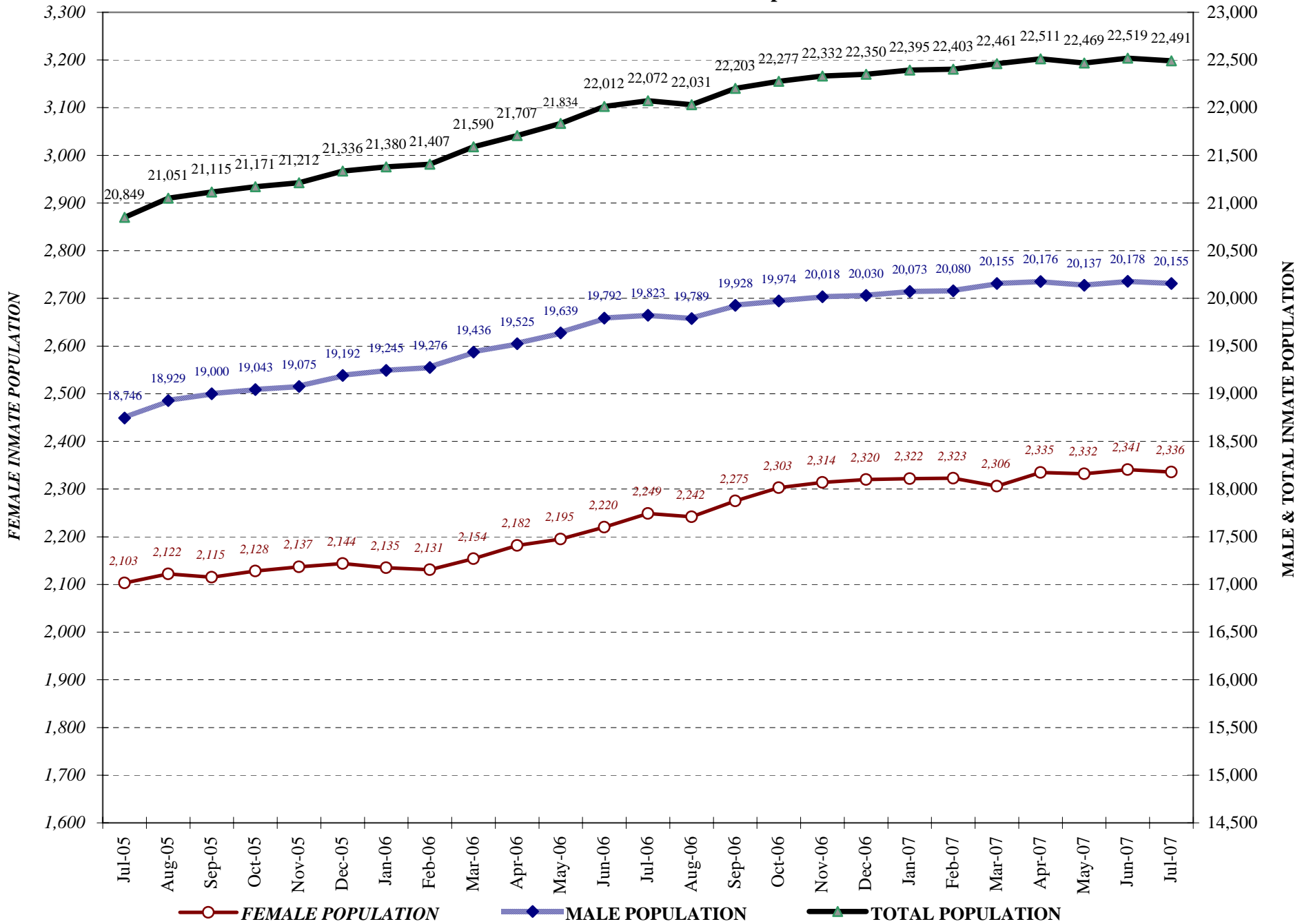
## Adult Prison Releases



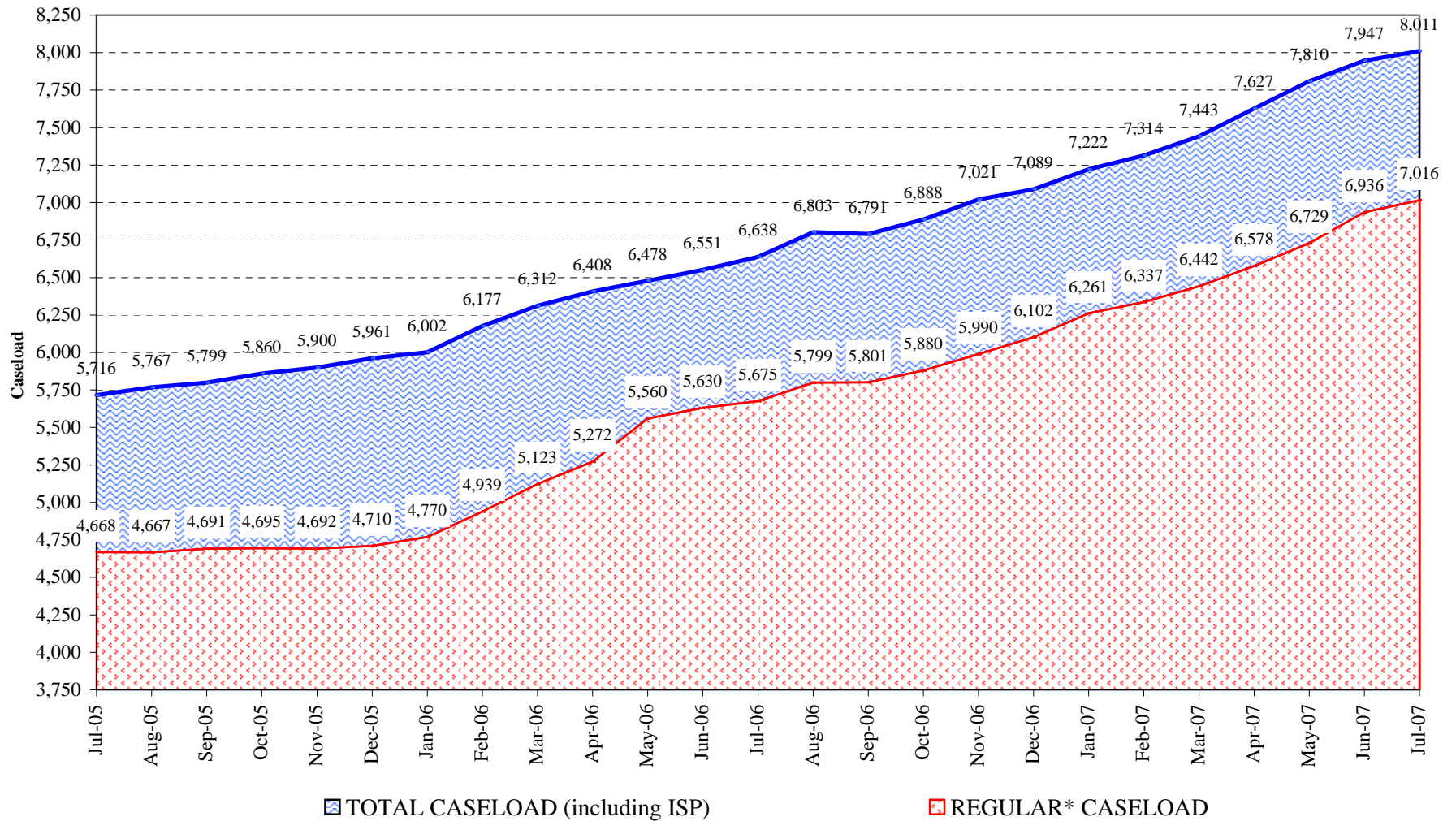
Total releases include releases to discretionary parole, mandatory parole and reparole, all types of discharges and other releases as detailed on the previous page.



## COLORADO DEPARTMENT OF CORRECTIONS Adult Jurisdiction Inmate Population



## COLORADO DEPARTMENT OF CORRECTIONS Parole Population



\* Regular caseload includes interstate parole, but excludes out-of-state parolees and absconders.