

**COLORADO DEPARTMENT OF CORRECTIONS
MONTHLY POPULATION AND CAPACITY REPORT
AS OF JUNE 30, 2007**

5-Jul-07

	05/31/07	CAPACITY CHANGES	----- 06/30/07 -----		----- 06/30/06 -----	
	OPERATIONAL CAPACITY*		OPERATIONAL CAPACITY*	ON-GRDS POPULATION	OPERATIONAL CAPACITY*	ON-GRDS POPULATION
COLO STATE PENITENTIARY	756		756	753	756	752
CENTENNIAL CORR FAC	336		336	315	336	327
STERLING CORR FAC	2,545		2,545	2,530	2,445	2,405
LIMON CORR FAC	953		953	941	953	945
ARK VALLEY CORR FAC	1,007		1,007	1,008	1,007	1,003
BUENA VISTA CORR FAC	926		926	912	826	824
BUENA VISTA MIN CTR	292		292	284	292	286
COLO TERR CORR FAC	786		786	786	786	787
FORT LYON CORR FAC	500		500	497	500	476
FREMONT CORR FAC	1,471		1,471	1,465	1,471	1,467
LA VISTA CORR FAC	519		519	498	72	72
ARROWHEAD CORR CTR	494		494	489	494	490
FOUR MILE CORR CTR	499		499	494	499	498
PUEBLO MINIMUM CTR	0		0	0	184	182
TRINIDAD CORR FAC	484		484	471	484	482
S.T.U. at Y.O.S.	30		30	30	30	24
SKYLINE CORR CTR	249		249	248	249	249
COLORADO CORR CTR	150		150	145	150	148
DELTA CORR CTR	484		484	454	484	480
RIFLE CORR CTR	192		192	187	192	172
COLO CORR ALT PROGRAM	100		100	104	100	118
COLO WOMEN'S CORR FAC	224		224	208	224	224
DENVER WOMEN'S CORR FAC	900		900	810	900	892
DENVER REC DIAG CTR	480		480	457	480	495
SAN CARLOS CORR FAC	255		255	244	255	250
SUBTOTAL	14,632	0	14,632	14,330	14,169	14,048
CONTRACTS:						
BENT COUNTY CORR CTR	724		724	668	724	722
HUERFANO COUNTY CORR CTR	774		774	749	774	755
CROWLEY COUNTY CORR FAC	1,720		1,720	1,556	1,754	1,276
KIT CARSON COUNTY CORR FAC	820		820	790	824	801
CHEYENNE MTN REENTRY CTR	500		500	500	500	498
BRUSH CORR FAC	270		270	207	270	247
NORTH FORK OK CORR FAC	480		480	479	0	0
OFF-GROUNDS POPULATION:						
ESCAPEES/WALKAWAYS				233		208
REVOCATIONS-JAIL				227		255
				0		0
JAIL BACKLOG:						
BACKLOG LESS THAN 72 HOURS			82		124	
BACKLOG GREATER THAN 72 HOURS (FISCAL YTD AVE = 309)			0		384	
BACKLOG-PAROLEES AWAITING TRANSFER			36		74	
TOTAL JAIL BACKLOG				118		582
COUNTY JAIL CONTRACTS				82		62
COMMUNITY CORRECTIONS						
COMMUNITY						
RESIDENTIAL	1,363	30	1,393	1,393	1,336	1,336
PAROLE REVOCATIONS	1	-1	0	0	1	1
REVOKED-RET TO CUST	245	-10	235	235	230	230
NON-RESIDENTIAL	63	-25	38	38	66	66
REGRESSIONS	27	18	45	45	37	37
TOTAL COMMUNITY	1,699	12	1,711	1,711	1,670	1,670
ISP						
RESIDENTIAL	862	-20	842	842	843	843
NON-RESIDENTIAL	27	-5	22	22	33	33
REGRESSIONS	5	0	5	5	12	12
TOTAL ISP	894	-25	869	869	888	888
TOTAL COMM. CORRECTIONS	2,593	-13	2,580	2,580	2,558	2,558
MALE POPULATION			20,178		19,792	
FEMALE POPULATION			2,341		2,220	
TOTAL INMATE JURISDICTIONAL POPULATION				22,519		22,012

*OPERATIONAL CAPACITY INCLUDES ALL BEDS AVAILABLE FOR USE, INCLUDING MANAGEMENT CONTROL UNITS, BU
EXCLUDES EMERGENCY DOUBLE BUNKING

COLORADO DEPARTMENT OF CORRECTIONS
MONTHLY POPULATION AND CAPACITY REPORT
AS OF JUNE 30, 2007

5-Jul-07

CURRENT MONTH CHANGES IN CAPACITY:

NONE

NET MONTHLY GROWTH RATE:

CURRENT MONTH	50
FISCAL YEAR-TO-DATE AVERAGE	42

YOUTHFUL OFFENDER SYSTEM

	----- 06/30/07 -----			06/30/06
	PUEBLO	CONTRACT FACILITIES	COMM. CORR.	TOTAL POPULATION
INTAKE/IDO	9			9
RFP/REMEDATION	7			7
PHASE I	154	0		154
PHASE II	12			12
PHASE III	1		24	25
OFF GROUNDS/BACKLOG				2
TOTAL Y.O.S. POPULATION	183	0	24	209

	CURRENT MONTH	FISCAL YR. TO DATE
YOS ADMISSIONS	2	61
YOS RELEASES:		
COMPLETION OF SENTENCE	6	55
JUDICIAL RELEASE TO PROB/CT ORD DISCHG	0	3
JUDICIAL TRANSFER TO DOC	0	0
TERMINATION/FAILURE	0	11
DECEASED	0	1
TOTAL RELEASES	6	70

PAROLE CASELOAD

	----- 06/30/07 -----			----- 05/31/07 -----		----- 06/30/06 -----	
	DOMESTIC	INTERST PAR/PROB	TOTAL CASELOAD	DOMESTIC	TOTAL CASELOAD	DOMESTIC	TOTAL CASELOAD
DENVER REGION							
REGULAR	2,510	107	2,617	2,417	2,433	2,081	2,183
ISP	473		473	508	508	431	431
SUBTOTAL	2,983	107	3,090	2,925	3,025	2,512	2,614
NORTHEAST REGION							
REGULAR	1,800	46	1,846	1,764	1,712	1,438	1,485
ISP	206		206	216	216	232	232
SUBTOTAL	2,006	46	2,052	1,980	2,030	1,670	1,717
SOUTHEAST REGION							
REGULAR	1,639	92	1,731	1,594	1,537	1,256	1,332
ISP	242		242	252	252	196	196
SUBTOTAL	1,881	92	1,973	1,846	1,936	1,452	1,528
WESTERN REGION							
REGULAR	701	41	742	675	655	590	630
ISP	90		90	105	105	62	62
SUBTOTAL	791	41	832	780	819	652	692
TOTAL CASELOAD							
REGULAR	6,650	286	6,936	6,450	6,729	5,365	5,630
ISP	1,011		1,011	1,081	1,081	921	921
TOTAL	7,661	286	7,947	7,531	7,810	6,286	6,551
ADDITIONAL CASELOAD:							
OUT-OF-STATE PAROLEES			1,815		1,819		1,669
PAROLEE ABSCONDERS			781		757		622

COLORADO DEPARTMENT OF CORRECTIONS
MONTHLY POPULATION AND CAPACITY REPORT
AS OF JUNE 30, 2007

	06/30/2007 Population			----- FINAL CUSTODY DESIGNATION* -----					
	On-Grds.	Off-Grds	Total	Uncls.	Ad.Seg	Close	Medium	Min.-Res.	Minimum
COLO STATE PENITENTIARY	753	5	758		754	2	1		1
CENTENNIAL CORR FAC	315	0	315		53	259	2	1	
STERLING CORR FAC	2,530	22	2,552		254	771	515	594	418
LIMON CORR FAC	941	10	951		6	683	186	60	16
ARK VALLEY CORR FAC	1,008	11	1,019		0	467	327	163	62
BUENA VISTA CORR FAC	912	15	927		12	367	348	139	61
BUENA VISTA MIN CTR	284	8	292					215	77
COLO TERR CORR FAC	785	10	795		10	185	255	199	146
FORT LYON CORR FAC	497	7	504		1	34	242	148	79
FREMONT CORR FAC	1,465	11	1,476		19	158	389	568	342
ARROWHEAD CORR CTR	489	1	490				3	290	197
FOUR MILE CORR CTR	494	6	500				1	345	154
TRINIDAD CORR FAC	471	5	476				1	408	67
S.T.U. at Y.O.S.	30	3	33				16	16	1
SKYLINE CORR CTR	248	0	248					2	246
COLORADO CORR CTR	145	1	146					2	144
DELTA CORR CTR	454	5	459						459
RIFLE CORR CTR	187	2	189				2	2	185
COLO CORR ALT PROGRAM	96	8	104					5	99
DENVER REC DIAG CTR	457	7	464	157	7	35	92	120	53
SAN CARLOS CORR FAC	244	5	249		25	101	57	34	32
CONTRACTS:									
BENT COUNTY CORR CTR	668	16	684		1	12	341	205	125
HUERFANO COUNTY CORR CTR	749	17	766		6	5	388	221	146
CROWLEY COUNTY CORR FAC	1,556	25	1,581		4	5	812	520	240
KIT CARSON COUNTY CORR FAC	790	3	793			7	433	221	132
CHEYENNE MTN REENTRY CTR	500	1	501			5	120	245	131
NORTH FORK OK CORR FAC	479	0	479			2	233	188	56
COMMUNITY/ISP	1,760	48	1,808			1	31	51	1,725
Total Classified Male Population	19,307	252	19,559	157	1,152	3,099	4,795	4,962	5,394
Percent of Total				0.8%	5.9%	15.8%	24.5%	25.4%	27.6%
Unclassified Facilities:									
JAIL BACKLOG	96	0	96						
COUNTY JAIL CONTRACTS	78	4	82						
REVOKED TO JAIL	0	0	0						
REVOKED TO COMM CTR	0	0	0						
REVOKED-RET TO CUST FAC	162	39	201						
COMM/ISP REGRESSIONS	0	46	46						
ESCAPEES/WALKAWAYS	42	152	194						
Total Unclassified Facilities	378	241	619						
Total Male Population	19,685	493	20,178						
COLO WOMEN'S CORR FAC	208	1	209		1	37	27	64	80
DENVER WOMEN'S CORR FAC	810	10	820	7	23	116	114	341	219
LA VISTA CORR FAC	498	8	506		1	62	80	230	133
COLO CORR ALT PROGRAM	8	0	8					2	6
DENVER REC DIAG CTR INF	0	0	0						
COLO TERR CORR FAC INF.	1	0	1					1	
CONTRACTS:									
BRUSH CORR FAC	207	10	217				25	113	79
COMMUNITY/ISP	475	12	487			3	10	35	439
Total Classified Female Population	2,207	41	2,248	7	25	218	256	786	956
Percent of Total				0.3%	1.1%	9.7%	11.4%	35.0%	42.5%
Unclassified Facilities:									
JAIL BACKLOG	22	0	22						
COUNTY JAIL CONTRACTS	0	0	0						
REVOKED TO JAIL	0	0	0						
REVOKED TO COMM CTR	0	0	0						
REVOKED-RET TO CUST FAC	30	4	34						
COMM/ISP REGRESSIONS	0	4	4						
ESCAPEES/WALKAWAYS	1	32	33						
Total Unclassified Facilities	53	40	93						
Total Female Population	2,260	81	2,341						

COLORADO DEPARTMENT OF CORRECTIONS
ADULT INMATE JURISDICTIONAL POPULATION (1)

DATE: 7/5/2007

DATE	MALE POPULATION			FEMALE POPULATION			TOTAL POPULATION		
	Male Population	Net Change	Fiscal Y-T-D Average	Female Population	Net Change	Fiscal Y-T-D Average	Total Population	Net Change	Fiscal Y-T-D Average
06-30-07	20,178	41	32	2,341	9	10	22,519	50	42
05-31-07	20,137	-39		2,332	-3		22,469	-42	
04-30-07	20,176	21		2,335	29		22,511	50	
03-31-07	20,155	75		2,306	-17		22,461	58	
02-28-07	20,080	7		2,323	1		22,403	8	
01-31-07	20,073	43		2,322	2		22,395	45	
12-31-06	20,030	12		2,320	6		22,350	18	
11-30-06	20,018	44		2,314	11		22,332	55	
10-31-06	19,974	46		2,303	28		22,277	74	
09-30-06	19,928	139		2,275	33		22,203	172	
08-31-06	19,789	-34		2,242	-7		22,031	-41	
07-31-06	19,823	31		2,249	29		22,072	60	
06-30-06	19,792	153		2,220	25		22,012	178	
05-31-06	19,639	114		2,195	13		21,834	127	
04-30-06	19,525	89		2,182	28		21,707	117	
03-31-06	19,436	160		2,154	23		21,590	183	
02-28-06	19,276	31		2,131	-4		21,407	27	
01-31-06	19,245	53		2,135	-9		21,380	44	
12-31-05	19,192	117	97	2,144	7	12	21,336	124	109
11-30-05	19,075	32		2,137	9		21,212	41	
10-31-05	19,043	43		2,128	13		21,171	56	
09-30-05	19,000	71		2,115	-7		21,115	64	
08-31-05	18,929	183		2,122	19		21,051	202	
07-31-05	18,746	115		2,103	30		20,849	145	
06-30-05	18,631		68	2,073		27	20,704		95
06-30-04	17,814		49	1,755		11	19,569		60
06-30-03	17,226		57	1,620		10	18,846		67
06-30-02	16,539		87	1,506		14	18,045		101
06-30-01	15,493		63	1,340		6	16,833		70
06-30-00	14,733		99	1,266		7	15,999		106
06-30-99	13,547		75	1,179		14	14,726		89
06-30-98	12,647		81	1,016		9	13,663		89
06-30-97	11,681			909			12,590		

(1) Adult inmate jurisdictional population includes on-grounds, off-grounds, out-of-state, escapees, and jail backlog and excludes offenders sentenced to the Youthful Offender System (Y.O.S.).

COLORADO DEPARTMENT OF CORRECTIONS
ADULT INMATE RELEASES FROM PRISON
TOTAL Population (Male and Female)

Date: 7/5/2007

	Parole				Discharge					Other				Total
	Discretionary*	Mandatory*	Mand. Repar.*	Com. Supv.	Sentence	H.B. 1087	Martin/Cooper	Chgs/Det.	Com Spv. Elim	Probation	Ct. Ord. Dsch.	Appeal Bond	Deceased	
Jun-07	433	188	92	0	19	49	13	11	0	9	8	0	2	824
May-07	499	216	129	0	31	43	7	20	0	14	9	0	4	972
Apr-07	447	197	100	0	26	51	9	16	0	6	10	0	6	868
Mar-07	415	187	140	0	33	64	4	14	0	14	13	1	3	888
Feb-07	405	235	80	0	24	58	12	19	0	15	5	0	0	853
Jan-07	542	192	42	0	37	59	5	15	0	15	16	0	9	932
Dec-06	349	179	59	0	27	44	10	14	0	13	6	1	2	704
Nov-06	422	202	70	0	30	45	12	12	0	16	11	0	6	826
Oct-06	426	186	84	0	36	44	11	10	0	6	7	1	5	816
Sep-06	348	180	65	0	29	44	13	15	0	13	7	0	2	716
Aug-06	430	239	104	0	37	52	10	21	0	17	11	0	2	923
Jul-06	350	174	87	0	43	52	9	20	0	17	6	0	7	765
Jun-06	375	199	89	0	37	43	10	16	0	16	7	0	2	794
May-06	317	235	75	0	34	52	10	15	0	13	9	0	3	763
Apr-06	227	235	91	0	41	54	17	17	0	10	7	0	8	707
Mar-06	305	282	113	0	39	46	10	12	0	18	5	1	2	833
Feb-06	305	250	71	0	34	39	13	10	0	27	14	0	1	764
Jan-06	316	218	75	0	45	51	11	14	0	13	6	0	7	756
Dec-05	235	238	98	0	51	47	15	17	0	18	12	0	6	737
Nov-05	183	297	126	0	37	55	7	13	0	10	18	0	5	751
Oct-05	157	304	130	0	34	58	11	19	0	17	10	1	5	746
Sep-05	142	318	90	0	30	61	17	14	0	23	6	0	3	704
Aug-05	124	312	109	0	33	47	17	20	0	14	11	0	6	693
Jul-05	121	306	109	0	46	48	13	13	0	15	9	0	8	688

Definitions of Release Types

Discretionary parole-Released to parole through Parole Board discretion prior to mandatory release or sentence discharge date.

Mandatory parole-Released to parole on mandatory release date.

Mand. Repar-Reparoled on specific date set by Parole Board (includes S.B. 252 reparoles). n/a - breakout not available prior to June 2004.

Com. Supv.-Released to serve 12 months of community supervision.

Sentence discharge-Completion of sentence with no further supervision.

H.B. 1087 discharge-Completion of sentence with no further supervision, subject to earn time provisions of H.B. 95-1087.

Martin/ Cooper discharge-Completion of sentence with no further supervision, sex offender subject to Martin/Cooper Supreme Court decision.

Chgs/ Det. discharge-Completion of sentence, released to other law enforcement for pending charges or detainees.

Com. Spv. Elim discharge-Completion of sentence following reincarceration on community supervision sentence.

Probation-Released by court to probation.

Ct. Ord. Dsch.-Released by court order.

Appeal Bond-Released by court to appeal bond.

Deceased-Offender death in prison.

***Due to the decrease in community transportation services, the Department implemented a procedural change in December 2005 with regards to releasing inmates on weekends. As a result of this change, discretionary releases have increased and mandatory releases have decreased.**

COLORADO DEPARTMENT OF CORRECTIONS
ADULT INMATE RELEASES FROM PRISON
Male Population Only

Date: 7/5/2007

	Parole				Discharge					Other				Total
	Discretionary*	Mandatory*	Mand. Repar.*	Com. Supv.	Sentence	H.B. 1087	Martin/Cooper	Chgs/Det.	Com Spv. Elim	Probation	Ct. Ord. Dsch.	Appeal Bond	Deceased	
Jun-07	366	172	79	0	18	45	12	11	0	8	8	0	2	721
May-07	432	194	110	0	30	37	7	18	0	11	9	0	3	851
Apr-07	382	179	90	0	24	47	8	15	0	4	8	0	6	763
Mar-07	344	166	118	0	28	56	4	14	0	10	13	0	3	756
Feb-07	330	209	71	0	23	51	11	16	0	14	5	0	0	730
Jan-07	453	169	37	0	34	53	5	15	0	14	13	0	7	800
Dec-06	298	160	56	0	24	38	10	14	0	13	6	1	2	622
Nov-06	358	178	62	0	28	42	12	12	0	13	10	0	6	721
Oct-06	373	163	73	0	34	36	11	9	0	6	6	1	5	717
Sep-06	300	148	59	0	29	40	13	12	0	12	7	0	2	622
Aug-06	364	209	89	0	34	44	10	21	0	14	10	0	2	797
Jul-06	310	158	72	0	40	45	9	18	0	15	4	0	7	678
Jun-06	325	180	74	0	32	41	10	13	0	15	6	0	2	698
May-06	269	202	60	0	33	47	10	15	0	12	8	0	3	659
Apr-06	178	213	79	0	35	47	17	16	0	9	6	0	8	608
Mar-06	267	246	100	0	36	41	10	12	0	14	5	1	2	734
Feb-06	253	220	63	0	33	37	13	10	0	25	14	0	1	669
Jan-06	266	187	63	0	43	48	11	13	0	12	5	0	6	654
Dec-05	193	204	84	0	48	43	15	17	0	16	11	0	4	635
Nov-05	156	251	114	0	32	47	7	12	0	10	17	0	4	650
Oct-05	127	273	101	0	32	50	11	17	0	15	10	1	4	641
Sep-05	111	283	78	0	26	57	16	12	0	22	6	0	3	614
Aug-05	98	280	94	0	31	41	17	19	0	12	8	0	6	606
Jul-05	100	253	95	0	43	47	13	13	0	11	8	0	8	591

Definitions of Release Types

Discretionary parole-Released to parole through Parole Board discretion prior to mandatory release or sentence discharge date.

Mandatory parole-Released to parole on mandatory release date.

Mand. Repar-Reparoled on specific date set by Parole Board (includes S.B. 252 reparoles). n/a - breakout not available prior to June 2004.

Com. Supv.-Released to serve 12 months of community supervision.

Sentence discharge-Completion of sentence with no further supervision.

H.B. 1087 discharge-Completion of sentence with no further supervision, subject to earn time provisions of H.B. 95-1087.

Martin/ Cooper discharge-Completion of sentence with no further supervision, sex offender subject to Martin/Cooper Supreme Court decision.

Chgs/ Det. discharge-Completion of sentence, released to other law enforcement for pending charges or detainees.

Com. Spv. Elim discharge-Completion of sentence following reincarceration on community supervision sentence.

Probation-Released by court to probation.

Ct. Ord. Dsch.-Released by court order.

Appeal Bond-Released by court to appeal bond.

Deceased-Offender death in prison.

***Due to the decrease in community transportation services, the Department implemented a procedural change in December 2005 with regards to releasing inmates on weekends. As a result of this change, discretionary releases have increased and mandatory releases have decreased.**

COLORADO DEPARTMENT OF CORRECTIONS
ADULT INMATE RELEASES FROM PRISON
Female Population Only

Date: 7/5/2007

	Parole				Discharge					Other				Total
	Discretionary*	Mandatory*	Mand. Repar.*	Com. Supv.	Sentence	H.B. 1087	Martin/Cooper	Chgs/Det.	Com Spv. Elim	Probation	Ct. Ord. Dsch.	Appeal Bond	Deceased	
Jun-07	67	16	13	0	1	4	1	0	0	1	0	0	0	103
May-07	67	22	19	0	1	6	0	2	0	3	0	0	1	121
Apr-07	65	18	10	0	2	4	1	1	0	2	2	0	0	105
Mar-07	71	21	22	0	5	8	0	0	0	4	0	1	0	132
Feb-07	75	26	9	0	1	7	1	3	0	1	0	0	0	123
Jan-07	89	23	5	0	3	6	0	0	0	1	3	0	2	132
Dec-06	51	19	3	0	3	6	0	0	0	0	0	0	0	82
Nov-06	64	24	8	0	2	3	0	0	0	3	1	0	0	105
Oct-06	53	23	11	0	2	8	0	1	0	0	1	0	0	99
Sep-06	48	32	6	0	0	4	0	3	0	1	0	0	0	94
Aug-06	66	30	15	0	3	8	0	0	0	3	1	0	0	126
Jul-06	40	16	15	0	3	7	0	2	0	2	2	0	0	87
Jun-06	50	19	15	0	5	2	0	3	0	1	1	0	0	96
May-06	48	33	15	0	1	5	0	0	0	1	1	0	0	104
Apr-06	49	22	12	0	6	7	0	1	0	1	1	0	0	99
Mar-06	38	36	13	0	3	5	0	0	0	4	0	0	0	99
Feb-06	52	30	8	0	1	2	0	0	0	2	0	0	0	95
Jan-06	50	31	12	0	2	3	0	1	0	1	1	0	1	102
Dec-05	42	34	14	0	3	4	0	0	0	2	1	0	2	102
Nov-05	27	46	12	0	5	8	0	1	0	0	1	0	1	101
Oct-05	30	31	29	0	2	8	0	2	0	2	0	0	1	105
Sep-05	31	35	12	0	4	4	1	2	0	1	0	0	0	90
Aug-05	26	32	15	0	2	6	0	1	0	2	3	0	0	87
Jul-05	21	53	14	0	3	1	0	0	0	4	1	0	0	97

Definitions of Release Types

Discretionary parole-Released to parole through Parole Board discretion prior to mandatory release or sentence discharge date.

Mandatory parole-Released to parole on mandatory release date.

Mand. Repar-Reparoled on specific date set by Parole Board (includes S.B. 252 reparoles). n/a - breakout not available prior to June 2004.

Com. Supv.-Released to serve 12 months of community supervision.

Sentence discharge-Completion of sentence with no further supervision.

H.B. 1087 discharge-Completion of sentence with no further supervision, subject to earn time provisions of H.B. 95-1087.

Martin/ Cooper discharge-Completion of sentence with no further supervision, sex offender subject to Martin/Cooper Supreme Court decision.

Chgs/ Det. discharge-Completion of sentence, released to other law enforcement for pending charges or detainees.

Com. Spv. Elim discharge-Completion of sentence following reincarceration on community supervision sentence.

Probation-Released by court to probation.

Ct. Ord. Dsch.-Released by court order.

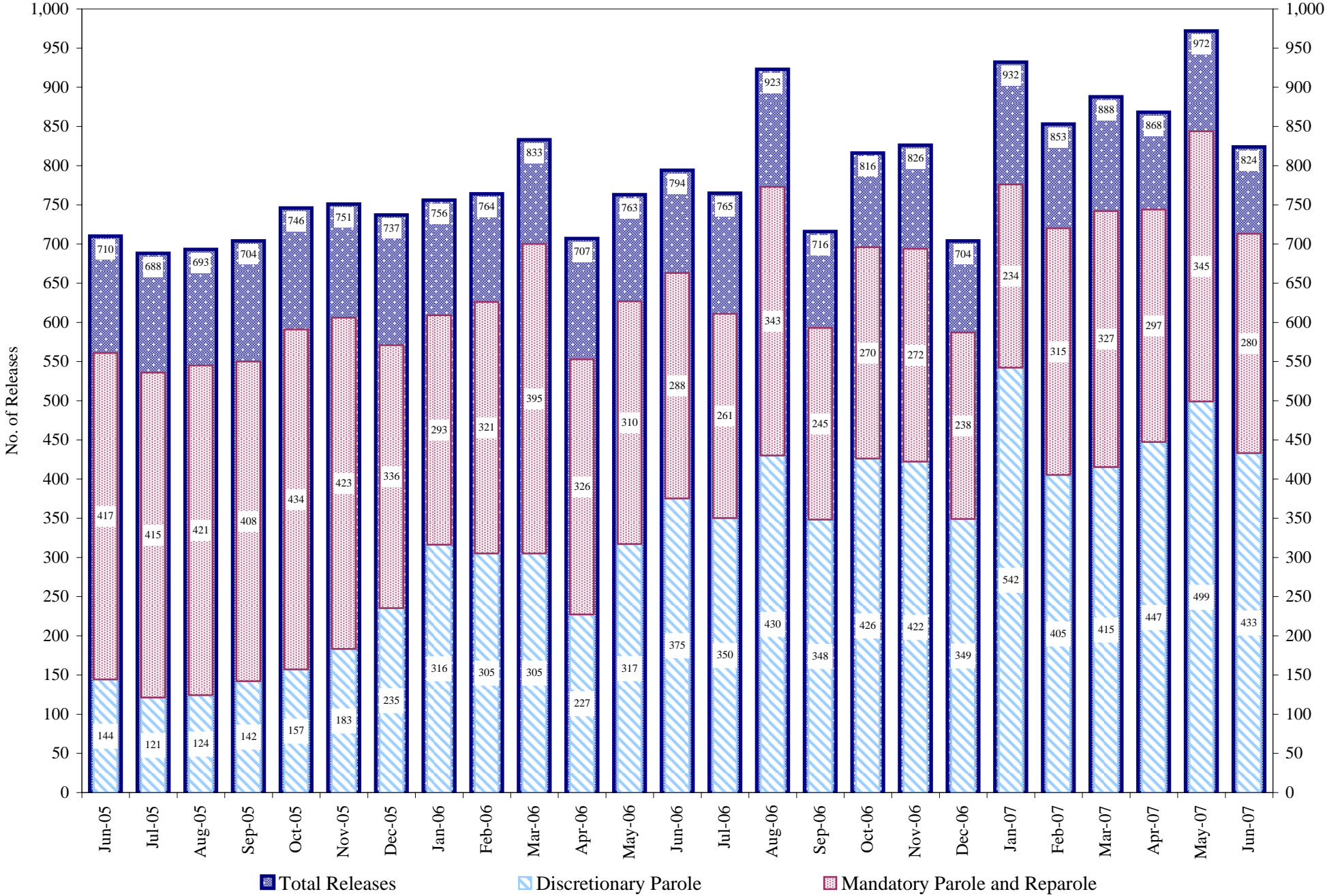
Appeal Bond-Released by court to appeal bond.

Deceased-Offender death in prison.

*Due to the decrease in community transportation services, the Department implemented a procedural change in December 2005 with regards to releasing inmates on weekends. As a result of this change, discretionary releases have increased and mandatory releases have decreased.

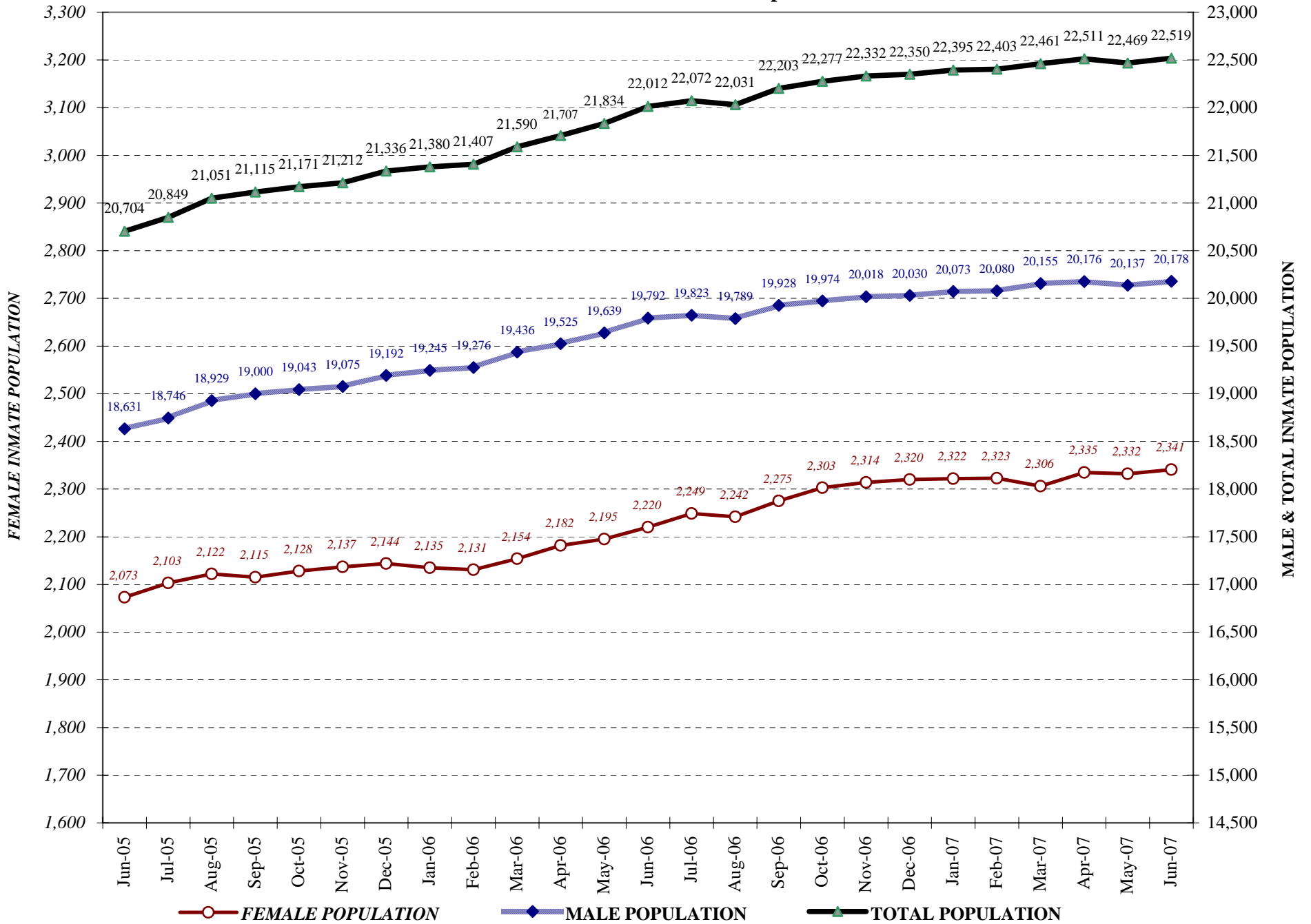
COLORADO DEPARTMENT OF CORRECTIONS

Adult Prison Releases

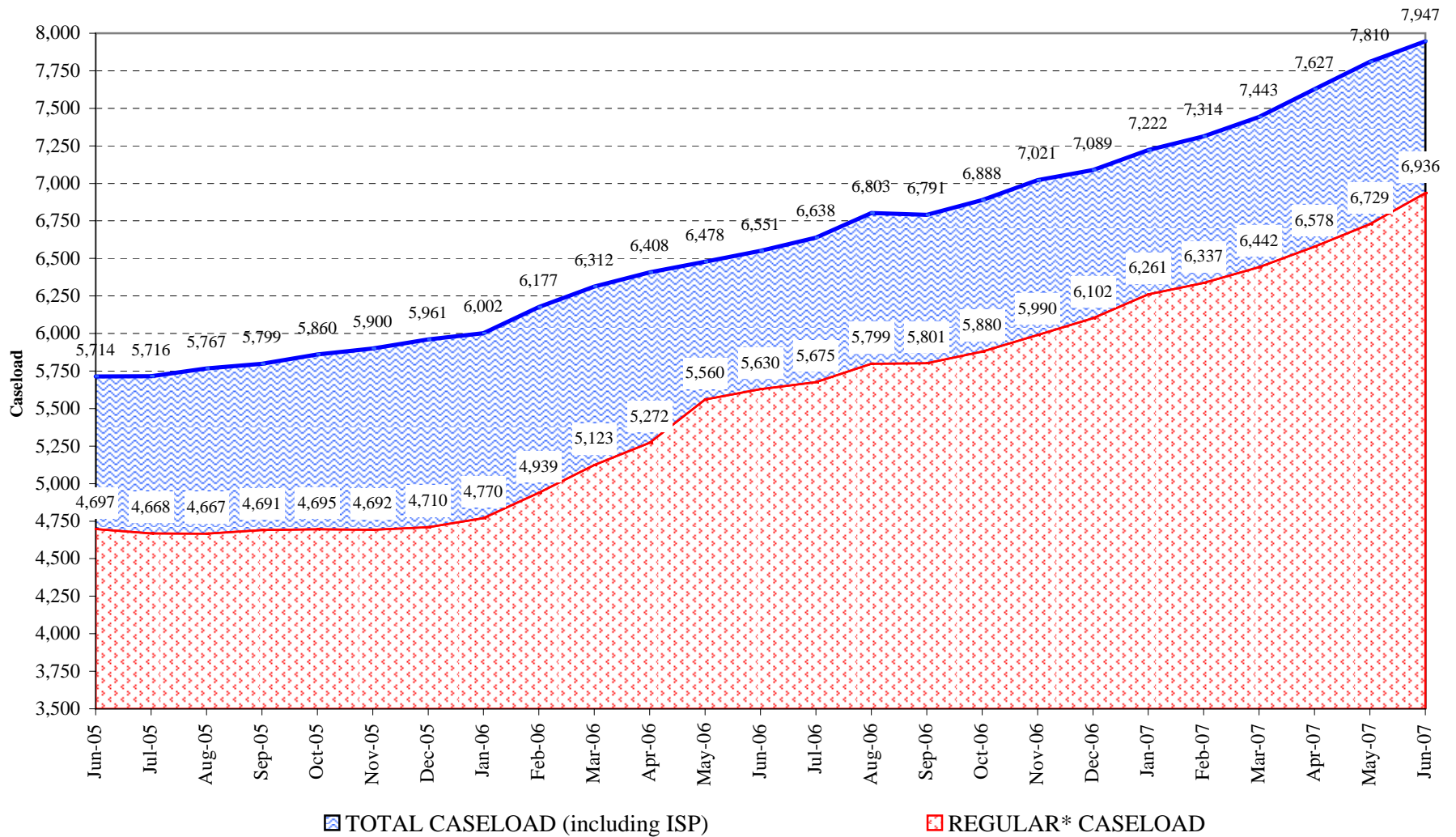


Total releases include releases to discretionary parole, mandatory parole and reparole, all types of discharges and other releases as detailed on the previous page.

COLORADO DEPARTMENT OF CORRECTIONS Adult Jurisdictional Inmate Population



COLORADO DEPARTMENT OF CORRECTIONS Parole Population



* Regular caseload includes interstate parole, but excludes out-of-state parolees and absconders.