

**COLORADO DEPARTMENT OF CORRECTIONS
MONTHLY POPULATION AND CAPACITY REPORT
AS OF MAY 31, 2007**

7-Jun-07

	04/30/07	CAPACITY CHANGES	----- 05/31/07 -----		----- 05/31/06 -----	
	OPERATIONAL CAPACITY*		OPERATIONAL CAPACITY*	ON-GRDS POPULATION	OPERATIONAL CAPACITY*	ON-GRDS POPULATION
COLO STATE PENITENTIARY	756		756	751	756	756
CENTENNIAL CORR FAC	336		336	320	336	322
STERLING CORR FAC	2,545		2,545	2,512	2,445	2,410
LIMON CORR FAC	953		953	936	953	948
ARK VALLEY CORR FAC	1,007		1,007	1,006	1,007	997
BUENA VISTA CORR FAC	926		926	901	826	813
BUENA VISTA MIN CTR	292		292	282	292	285
COLO TERR CORR FAC	786		786	789	786	784
FORT LYON CORR FAC	500		500	493	500	477
FREMONT CORR FAC	1,471		1,471	1,465	1,471	1,467
LA VISTA CORR FAC	519		519	493	72	67
ARROWHEAD CORR CTR	494		494	493	494	491
FOUR MILE CORR CTR	499		499	493	499	495
PUEBLO MINIMUM CTR	0		0	0	184	181
TRINIDAD CORR FAC	484		484	477	484	468
S.T.U. at Y.O.S.	30		30	27	30	26
SKYLINE CORR CTR	249		249	246	249	246
COLORADO CORR CTR	150		150	149	150	150
DELTA CORR CTR	484		484	463	484	477
RIFLE CORR CTR	192		192	187	192	192
COLO CORR ALT PROGRAM	100		100	98	100	93
COLO WOMEN'S CORR FAC	224		224	207	224	219
DENVER WOMEN'S CORR FAC	900		900	819	900	884
DENVER REC DIAG CTR	480		480	452	480	496
SAN CARLOS CORR FAC	255		255	243	255	248
SUBTOTAL	14,632	0	14,632	14,302	14,169	13,992
CONTRACTS:						
BENT COUNTY CORR CTR	724		724	669	724	694
HUERFANO COUNTY CORR CTR	774		774	754	774	756
CROWLEY COUNTY CORR FAC	1,720		1,720	1,477	1,754	1,185
KIT CARSON COUNTY CORR FAC	820		820	784	824	765
CHEYENNE MTN REENTRY CTR	500		500	498	500	495
BRUSH CORR FAC	270		270	189	270	250
NORTH FORK OK CORR FAC	480		480	484	0	0
OFF-GROUNDS POPULATION:						
ESCAPEES/WALKAWAYS				284		215
REVOCATIONS-JAIL				224		260
				0		0
JAIL BACKLOG:						
BACKLOG LESS THAN 72 HOURS			78		113	
BACKLOG GREATER THAN 72 HOURS (FISCAL YTD AVE = 331)			0		420	
BACKLOG-PAROLEES AWAITING TRANSFER			43		81	
TOTAL JAIL BACKLOG				121		614
COUNTY JAIL CONTRACTS				90		33
COMMUNITY CORRECTIONS						
COMMUNITY						
RESIDENTIAL	1,361	2	1,363	1,363	1,324	1,324
PAROLE REVOCATIONS	1	0	1	1	1	1
REVOKED-RET TO CUST	237	8	245	245	214	214
NON-RESIDENTIAL	48	15	63	63	65	65
REGRESSIONS	29	-2	27	27	57	57
TOTAL COMMUNITY	1,676	23	1,699	1,699	1,661	1,661
ISP						
RESIDENTIAL	859	3	862	862	851	851
NON-RESIDENTIAL	44	-17	27	27	51	51
REGRESSIONS	3	2	5	5	12	12
TOTAL ISP	906	-12	894	894	914	914
TOTAL COMM. CORRECTIONS	2,582	11	2,593	2,593	2,575	2,575
MALE POPULATION			20,137		19,639	
FEMALE POPULATION			2,332		2,195	
TOTAL INMATE JURISDICTIONAL POPULATION				22,469		21,834

*OPERATIONAL CAPACITY INCLUDES ALL BEDS AVAILABLE FOR USE, INCLUDING MANAGEMENT CONTROL UNITS, BU
EXCLUDES EMERGENCY DOUBLE BUNKING

COLORADO DEPARTMENT OF CORRECTIONS
MONTHLY POPULATION AND CAPACITY REPORT
AS OF MAY 31, 2007

7-Jun-07

CURRENT MONTH CHANGES IN CAPACITY:

NONE

NET MONTHLY GROWTH RATE:

CURRENT MONTH	-42
FISCAL YEAR-TO-DATE AVERAGE	42

YOUTHFUL OFFENDER SYSTEM

	----- 05/31/07 -----			05/31/06
	PUEBLO	CONTRACT FACILITIES	COMM. CORR.	TOTAL POPULATION
INTAKE/IDO	0			9
RFP/REMEDICATION	9			8
PHASE I	152	0		140
PHASE II	11			13
PHASE III	4		27	46
OFF GROUNDS/BACKLOG				1
TOTAL Y.O.S. POPULATION	176	0	27	217

	CURRENT MONTH	FISCAL YR. TO DATE
YOS ADMISSIONS	7	59
YOS RELEASES:		
COMPLETION OF SENTENCE	6	49
JUDICIAL RELEASE TO PROB/CT ORD DISCHG	1	3
JUDICIAL TRANSFER TO DOC	0	0
TERMINATION/FAILURE	0	11
DECEASED	0	1
TOTAL RELEASES	7	64

PAROLE CASELOAD

	----- 05/31/07 -----			----- 04/30/07 -----		----- 05/31/06 -----	
	DOMESTIC	INTERST PAR/PROB	TOTAL CASELOAD	DOMESTIC	TOTAL CASELOAD	DOMESTIC	TOTAL CASELOAD
DENVER REGION							
REGULAR	2,417	100	2,517	2,369	2,433	2,048	2,146
ISP	508		508	495	495	450	450
SUBTOTAL	2,925	100	3,025	2,864	2,968	2,498	2,596
NORTHEAST REGION							
REGULAR	1,764	50	1,814	1,737	1,712	1,424	1,472
ISP	216		216	218	218	229	229
SUBTOTAL	1,980	50	2,030	1,955	2,003	1,653	1,701
SOUTHEAST REGION							
REGULAR	1,594	90	1,684	1,533	1,537	1,239	1,311
ISP	252		252	235	235	180	180
SUBTOTAL	1,846	90	1,936	1,768	1,853	1,419	1,491
WESTERN REGION							
REGULAR	675	39	714	664	655	588	631
ISP	105		105	101	101	59	59
SUBTOTAL	780	39	819	765	803	647	690
TOTAL CASELOAD							
REGULAR	6,450	279	6,729	6,303	6,578	5,299	5,560
ISP	1,081		1,081	1,049	1,049	918	918
TOTAL	7,531	279	7,810	7,352	7,627	6,217	6,478
ADDITIONAL CASELOAD:							
OUT-OF-STATE PAROLEES			1,819		1,817		1,633
PAROLEE ABSCONDERS			757		746		590

COLORADO DEPARTMENT OF CORRECTIONS
MONTHLY POPULATION AND CAPACITY REPORT
AS OF MAY 31, 2007

	05/31/2007 Population			----- FINAL CUSTODY DESIGNATION* -----					
	On-Grds.	Off-Grds	Total	Uncls.	Ad.Seg	Close	Medium	Min.-Res.	Minimum
Male Population									
COLO STATE PENITENTIARY	751	5	756		751	4		1	
CENTENNIAL CORR FAC	320	1	321		72	234	8	4	3
STERLING CORR FAC	2,512	31	2,543		234	795	526	584	404
LIMON CORR FAC	936	10	946		5	681	182	60	18
ARK VALLEY CORR FAC	1,006	16	1,022		5	465	334	157	61
BUENA VISTA CORR FAC	901	17	918		2	387	341	126	62
BUENA VISTA MIN CTR	282	7	289		0	0	1	218	70
COLO TERR CORR FAC	789	12	801		4	167	254	217	159
FORT LYON CORR FAC	493	3	496		1	37	253	130	75
FREMONT CORR FAC	1,465	14	1,479	1	12	158	398	578	332
ARROWHEAD CORR CTR	493	4	497					287	210
FOUR MILE CORR CTR	493	6	499					343	156
TRINIDAD CORR FAC	477	13	490				1	427	62
S.T.U. at Y.O.S.	27	0	27				5	21	1
SKYLINE CORR CTR	246	2	248					0	248
COLORADO CORR CTR	149	0	149					3	146
DELTA CORR CTR	463	4	467				1	1	465
RIFLE CORR CTR	187	4	191						191
COLO CORR ALT PROGRAM	89	8	97				4	11	82
DENVER REC DIAG CTR	451	11	462	137	7	41	107	102	68
SAN CARLOS CORR FAC	243	7	250		24	106	53	35	32
CONTRACTS:									
BENT COUNTY CORR CTR	669	20	689		1	8	345	193	142
HUERFANO COUNTY CORR CTR	754	14	768		2	13	378	219	156
CROWLEY COUNTY CORR FAC	1,477	26	1,503			7	767	494	235
KIT CARSON COUNTY CORR FAC	784	9	793			9	432	221	131
CHEYENNE MTN REENTRY CTR	498	2	500			2	122	241	135
NORTH FORK OK CORR FAC	484	0	484				241	188	55
COMMUNITY/ISP	1,755	74	1,829			6	45	38	1,740
Total Classified Male Population	19,194	320	19,514	138	1,120	3,120	4,798	4,899	5,439
Percent of Total				0.7%	5.7%	16.0%	24.6%	25.1%	27.9%
Unclassified Facilities:									
JAIL BACKLOG	103	0	103						
COUNTY JAIL CONTRACTS	90	0	90						
REVOKED TO JAIL	0	0	0						
REVOKED TO COMM CTR	1	0	1						
REVOKED-RET TO CUST FAC	168	45	213						
COMM/ISP REGRESSIONS	0	25	25						
ESCAPEES/WALKAWAYS	40	151	191						
Total Unclassified Facilities	402	221	623						
Total Male Population	19,596	541	20,137						
Female Population									
COLO WOMEN'S CORR FAC	207	5	212		1	41	29	71	70
DENVER WOMEN'S CORR FAC	819	12	831	15	20	121	111	343	221
LA VISTA CORR FAC	493	10	503			61	85	215	142
COLO CORR ALT PROGRAM	9	1	10						10
DENVER REC DIAG CTR INF	1	0	1					1	
COLO TERR CORR FAC INF.	0	0	0						
CONTRACTS:									
BRUSH CORR FAC	189	10	199			4	19	104	72
COMMUNITY/ISP	470	16	486			3	5	32	446
Total Classified Female Population	2,188	54	2,242	15	21	230	249	766	961
Percent of Total				0.7%	0.9%	10.3%	11.1%	34.2%	42.9%
Unclassified Facilities:									
JAIL BACKLOG	18	0	18						
COUNTY JAIL CONTRACTS	0	0	0						
REVOKED TO JAIL	0	0	0						
REVOKED TO COMM CTR	0	0	0						
REVOKED-RET TO CUST FAC	28	4	32						
COMM/ISP REGRESSIONS	0	7	7						
ESCAPEES/WALKAWAYS	2	31	33						
Total Unclassified Facilities	48	42	90						
Total Female Population	2,236	96	2,332						

COLORADO DEPARTMENT OF CORRECTIONS

ADULT INMATE JURISDICTIONAL POPULATION (1)

DATE: 6/7/2007

DATE	MALE POPULATION			FEMALE POPULATION			TOTAL POPULATION		
	Male Population	Net Change	Fiscal Y-T-D Average	Female Population	Net Change	Fiscal Y-T-D Average	Total Population	Net Change	Fiscal Y-T-D Average
05-31-07	20,137	-39	31	2,332	-3	10	22,469	-42	42
04-30-07	20,176	21		2,335	29		22,511	50	
03-31-07	20,155	75		2,306	-17		22,461	58	
02-28-07	20,080	7		2,323	1		22,403	8	
01-31-07	20,073	43		2,322	2		22,395	45	
12-31-06	20,030	12		2,320	6		22,350	18	
11-30-06	20,018	44		2,314	11		22,332	55	
10-31-06	19,974	46		2,303	28		22,277	74	
09-30-06	19,928	139		2,275	33		22,203	172	
08-31-06	19,789	-34		2,242	-7		22,031	-41	
07-31-06	19,823	31		2,249	29		22,072	60	
06-30-06	19,792	153		2,220	25		22,012	178	
05-31-06	19,639	114		2,195	13		21,834	127	
04-30-06	19,525	89		2,182	28		21,707	117	
03-31-06	19,436	160		2,154	23		21,590	183	
02-28-06	19,276	31		2,131	-4		21,407	27	
01-31-06	19,245	53		2,135	-9		21,380	44	
12-31-05	19,192	117	97	2,144	7	12	21,336	124	109
11-30-05	19,075	32		2,137	9		21,212	41	
10-31-05	19,043	43		2,128	13		21,171	56	
09-30-05	19,000	71		2,115	-7		21,115	64	
08-31-05	18,929	183		2,122	19		21,051	202	
07-31-05	18,746	115		2,103	30		20,849	145	
06-30-05	18,631	123		2,073	43		20,704	166	
05-31-05	18,508	70		2,030	16		20,538	86	
04-30-05	18,438	102		2,014	32		20,452	134	
03-31-05	18,336	79		1,982	-10		20,318	69	
02-28-05	18,257	30		1,992	26		20,249	56	
01-31-05	18,227	-2		1,966	51		20,193	49	
12-31-04	18,229	56	68	1,915	11	27	20,144	67	95
11-30-04	18,173	79		1,904	27		20,077	106	
10-31-04	18,094	99		1,877	24		19,971	123	
09-30-04	17,995	-18		1,853	44		19,848	26	
08-31-04	18,013	95		1,809	44		19,822	139	
07-31-04	17,918	104		1,765	10		19,683	114	
06-30-04	17,814		49	1,755		11	19,569		60
06-30-03	17,226		57	1,620		10	18,846		67
06-30-02	16,539		87	1,506		14	18,045		101
06-30-01	15,493		63	1,340		6	16,833		70
06-30-00	14,733		99	1,266		7	15,999		106
06-30-99	13,547		75	1,179		14	14,726		89
06-30-98	12,647		81	1,016		9	13,663		89
06-30-97	11,681			909			12,590		

(1) Adult inmate jurisdictional population includes on-grounds, off-grounds, out-of-state, escapees, and jail backlog and excludes offenders sentenced to the Youthful Offender System (Y.O.S.).

COLORADO DEPARTMENT OF CORRECTIONS
ADULT INMATE RELEASES FROM PRISON
TOTAL Population (Male and Female)

Date: 6/7/2007

	Parole				Discharge					Other				Total
	Discretionary*	Mandatory*	Mand. Repar.*	Com. Supv.	Sentence	H.B. 1087	Martin/Cooper	Chgs/Det.	Com Spv. Elim	Probation	Ct. Ord. Dsch.	Appeal Bond	Deceased	
May-07	499	216	129	0	31	43	7	20	0	14	9	0	4	972
Apr-07	447	197	100	0	26	51	9	16	0	6	10	0	6	868
Mar-07	415	187	140	0	33	64	4	14	0	14	13	1	3	888
Feb-07	405	235	80	0	24	58	12	19	0	15	5	0	0	853
Jan-07	542	192	42	0	37	59	5	15	0	15	16	0	9	932
Dec-06	349	179	59	0	27	44	10	14	0	13	6	1	2	704
Nov-06	422	202	70	0	30	45	12	12	0	16	11	0	6	826
Oct-06	426	186	84	0	36	44	11	10	0	6	7	1	5	816
Sep-06	348	180	65	0	29	44	13	15	0	13	7	0	2	716
Aug-06	430	239	104	0	37	52	10	21	0	17	11	0	2	923
Jul-06	350	174	87	0	43	52	9	20	0	17	6	0	7	765
Jun-06	375	199	89	0	37	43	10	16	0	16	7	0	2	794
May-06	317	235	75	0	34	52	10	15	0	13	9	0	3	763
Apr-06	227	235	91	0	41	54	17	17	0	10	7	0	8	707
Mar-06	305	282	113	0	39	46	10	12	0	18	5	1	2	833
Feb-06	305	250	71	0	34	39	13	10	0	27	14	0	1	764
Jan-06	316	218	75	0	45	51	11	14	0	13	6	0	7	756
Dec-05	235	238	98	0	51	47	15	17	0	18	12	0	6	737
Nov-05	183	297	126	0	37	55	7	13	0	10	18	0	5	751
Oct-05	157	304	130	0	34	58	11	19	0	17	10	1	5	746
Sep-05	142	318	90	0	30	61	17	14	0	23	6	0	3	704
Aug-05	124	312	109	0	33	47	17	20	0	14	11	0	6	693
Jul-05	121	306	109	0	46	48	13	13	0	15	9	0	8	688
Jun-05	144	312	105	0	28	57	13	16	0	22	13	0	0	710

Definitions of Release Types

Discretionary parole-Released to parole through Parole Board discretion prior to mandatory release or sentence discharge date.

Mandatory parole-Released to parole on mandatory release date.

Mand. Repar-Reparoled on specific date set by Parole Board (includes S.B. 252 reparoles). n/a - breakout not available prior to June 2004.

Com. Supv.-Released to serve 12 months of community supervision.

Sentence discharge-Completion of sentence with no further supervision.

H.B. 1087 discharge-Completion of sentence with no further supervision, subject to earn time provisions of H.B. 95-1087.

Martin/ Cooper discharge-Completion of sentence with no further supervision, sex offender subject to Martin/Cooper Supreme Court decision.

Chgs/ Det. discharge-Completion of sentence, released to other law enforcement for pending charges or detainees.

Com. Spv. Elim discharge-Completion of sentence following reincarceration on community supervision sentence.

Probation-Released by court to probation.

Ct. Ord. Dsch.-Released by court order.

Appeal Bond-Released by court to appeal bond.

Deceased-Offender death in prison.

***Due to the decrease in community transportation services, the Department implemented a procedural change in December 2005 with regards to releasing inmates on weekends. As a result of this change, discretionary releases have increased and mandatory releases have decreased.**

COLORADO DEPARTMENT OF CORRECTIONS
ADULT INMATE RELEASES FROM PRISON
Male Population Only

Date: 6/7/2007

	Parole				Discharge					Other				Total
	Discretionary*	Mandatory*	Mand. Repar.*	Com. Supv.	Sentence	H.B. 1087	Martin/Cooper	Chgs/Det.	Com Spv. Elim	Probation	Ct. Ord. Dsch.	Appeal Bond	Deceased	
May-07	432	194	110	0	30	37	7	18	0	11	9	0	3	851
Apr-07	382	179	90	0	24	47	8	15	0	4	8	0	6	763
Mar-07	344	166	118	0	28	56	4	14	0	10	13	0	3	756
Feb-07	330	209	71	0	23	51	11	16	0	14	5	0	0	730
Jan-07	453	169	37	0	34	53	5	15	0	14	13	0	7	800
Dec-06	298	160	56	0	24	38	10	14	0	13	6	1	2	622
Nov-06	358	178	62	0	28	42	12	12	0	13	10	0	6	721
Oct-06	373	163	73	0	34	36	11	9	0	6	6	1	5	717
Sep-06	300	148	59	0	29	40	13	12	0	12	7	0	2	622
Aug-06	364	209	89	0	34	44	10	21	0	14	10	0	2	797
Jul-06	310	158	72	0	40	45	9	18	0	15	4	0	7	678
Jun-06	325	180	74	0	32	41	10	13	0	15	6	0	2	698
May-06	269	202	60	0	33	47	10	15	0	12	8	0	3	659
Apr-06	178	213	79	0	35	47	17	16	0	9	6	0	8	608
Mar-06	267	246	100	0	36	41	10	12	0	14	5	1	2	734
Feb-06	253	220	63	0	33	37	13	10	0	25	14	0	1	669
Jan-06	266	187	63	0	43	48	11	13	0	12	5	0	6	654
Dec-05	193	204	84	0	48	43	15	17	0	16	11	0	4	635
Nov-05	156	251	114	0	32	47	7	12	0	10	17	0	4	650
Oct-05	127	273	101	0	32	50	11	17	0	15	10	1	4	641
Sep-05	111	283	78	0	26	57	16	12	0	22	6	0	3	614
Aug-05	98	280	94	0	31	41	17	19	0	12	8	0	6	606
Jul-05	100	253	95	0	43	47	13	13	0	11	8	0	8	591
Jun-05	113	280	94	0	25	52	13	13	0	20	13	0	0	623

Definitions of Release Types

Discretionary parole-Released to parole through Parole Board discretion prior to mandatory release or sentence discharge date.

Mandatory parole-Released to parole on mandatory release date.

Mand. Repar-Reparoled on specific date set by Parole Board (includes S.B. 252 reparoles). n/a - breakout not available prior to June 2004.

Com. Supv.-Released to serve 12 months of community supervision.

Sentence discharge-Completion of sentence with no further supervision.

H.B. 1087 discharge-Completion of sentence with no further supervision, subject to earn time provisions of H.B. 95-1087.

Martin/ Cooper discharge-Completion of sentence with no further supervision, sex offender subject to Martin/Cooper Supreme Court decision.

Chgs/ Det. discharge-Completion of sentence, released to other law enforcement for pending charges or detainees.

Com. Spv. Elim discharge-Completion of sentence following reincarceration on community supervision sentence.

Probation-Released by court to probation.

Ct. Ord. Dsch.-Released by court order.

Appeal Bond-Released by court to appeal bond.

Deceased-Offender death in prison.

***Due to the decrease in community transportation services, the Department implemented a procedural change in December 2005 with regards to releasing inmates on weekends. As a result of this change, discretionary releases have increased and mandatory releases have decreased.**

COLORADO DEPARTMENT OF CORRECTIONS
ADULT INMATE RELEASES FROM PRISON
Female Population Only

Date: 6/7/2007

	Parole				Discharge					Other				Total
	Discretionary*	Mandatory*	Mand. Repar.*	Com. Supv.	Sentence	H.B. 1087	Martin/Cooper	Chgs/Det.	Com Spv. Elim	Probation	Ct. Ord. Dsch.	Appeal Bond	Deceased	
May-07	67	22	19	0	1	6	0	2	0	3	0	0	1	121
Apr-07	65	18	10	0	2	4	1	1	0	2	2	0	0	105
Mar-07	71	21	22	0	5	8	0	0	0	4	0	1	0	132
Feb-07	75	26	9	0	1	7	1	3	0	1	0	0	0	123
Jan-07	89	23	5	0	3	6	0	0	0	1	3	0	2	132
Dec-06	51	19	3	0	3	6	0	0	0	0	0	0	0	82
Nov-06	64	24	8	0	2	3	0	0	0	3	1	0	0	105
Oct-06	53	23	11	0	2	8	0	1	0	0	1	0	0	99
Sep-06	48	32	6	0	0	4	0	3	0	1	0	0	0	94
Aug-06	66	30	15	0	3	8	0	0	0	3	1	0	0	126
Jul-06	40	16	15	0	3	7	0	2	0	2	2	0	0	87
Jun-06	50	19	15	0	5	2	0	3	0	1	1	0	0	96
May-06	48	33	15	0	1	5	0	0	0	1	1	0	0	104
Apr-06	49	22	12	0	6	7	0	1	0	1	1	0	0	99
Mar-06	38	36	13	0	3	5	0	0	0	4	0	0	0	99
Feb-06	52	30	8	0	1	2	0	0	0	2	0	0	0	95
Jan-06	50	31	12	0	2	3	0	1	0	1	1	0	1	102
Dec-05	42	34	14	0	3	4	0	0	0	2	1	0	2	102
Nov-05	27	46	12	0	5	8	0	1	0	0	1	0	1	101
Oct-05	30	31	29	0	2	8	0	2	0	2	0	0	1	105
Sep-05	31	35	12	0	4	4	1	2	0	1	0	0	0	90
Aug-05	26	32	15	0	2	6	0	1	0	2	3	0	0	87
Jul-05	21	53	14	0	3	1	0	0	0	4	1	0	0	97
Jun-05	31	32	11	0	3	5	0	3	0	2	0	0	0	87

Definitions of Release Types

Discretionary parole-Released to parole through Parole Board discretion prior to mandatory release or sentence discharge date.

Mandatory parole-Released to parole on mandatory release date.

Mand. Repar-Reparoled on specific date set by Parole Board (includes S.B. 252 reparoles). n/a - breakout not available prior to June 2004.

Com. Supv.-Released to serve 12 months of community supervision.

Sentence discharge-Completion of sentence with no further supervision.

H.B. 1087 discharge-Completion of sentence with no further supervision, subject to earn time provisions of H.B. 95-1087.

Martin/ Cooper discharge-Completion of sentence with no further supervision, sex offender subject to Martin/Cooper Supreme Court decision.

Chgs/ Det. discharge-Completion of sentence, released to other law enforcement for pending charges or detainees.

Com. Spv. Elim discharge-Completion of sentence following reincarceration on community supervision sentence.

Probation-Released by court to probation.

Ct. Ord. Dsch.-Released by court order.

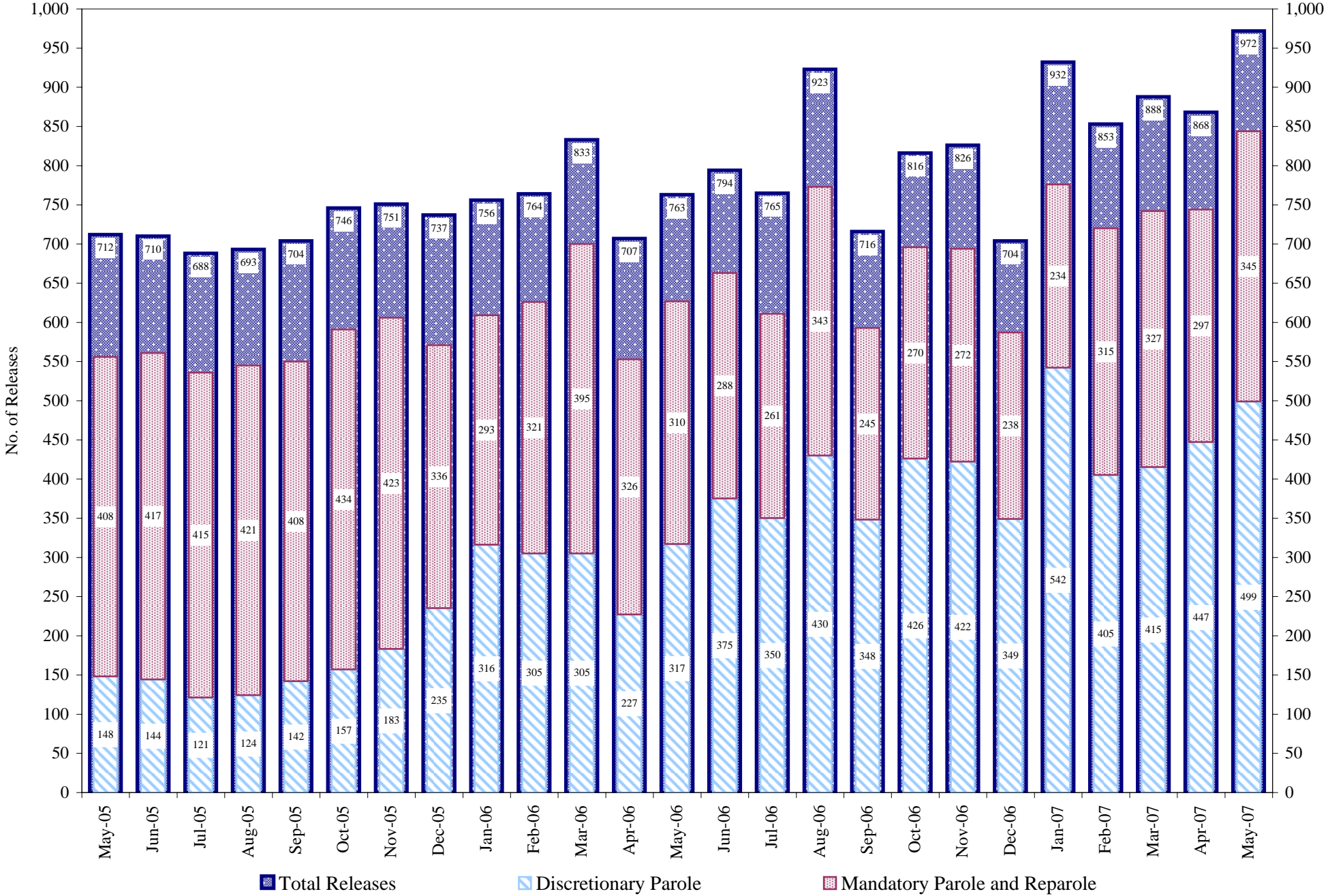
Appeal Bond-Released by court to appeal bond.

Deceased-Offender death in prison.

*Due to the decrease in community transportation services, the Department implemented a procedural change in December 2005 with regards to releasing inmates on weekends. As a result of this change, discretionary releases have increased and mandatory releases have decreased.

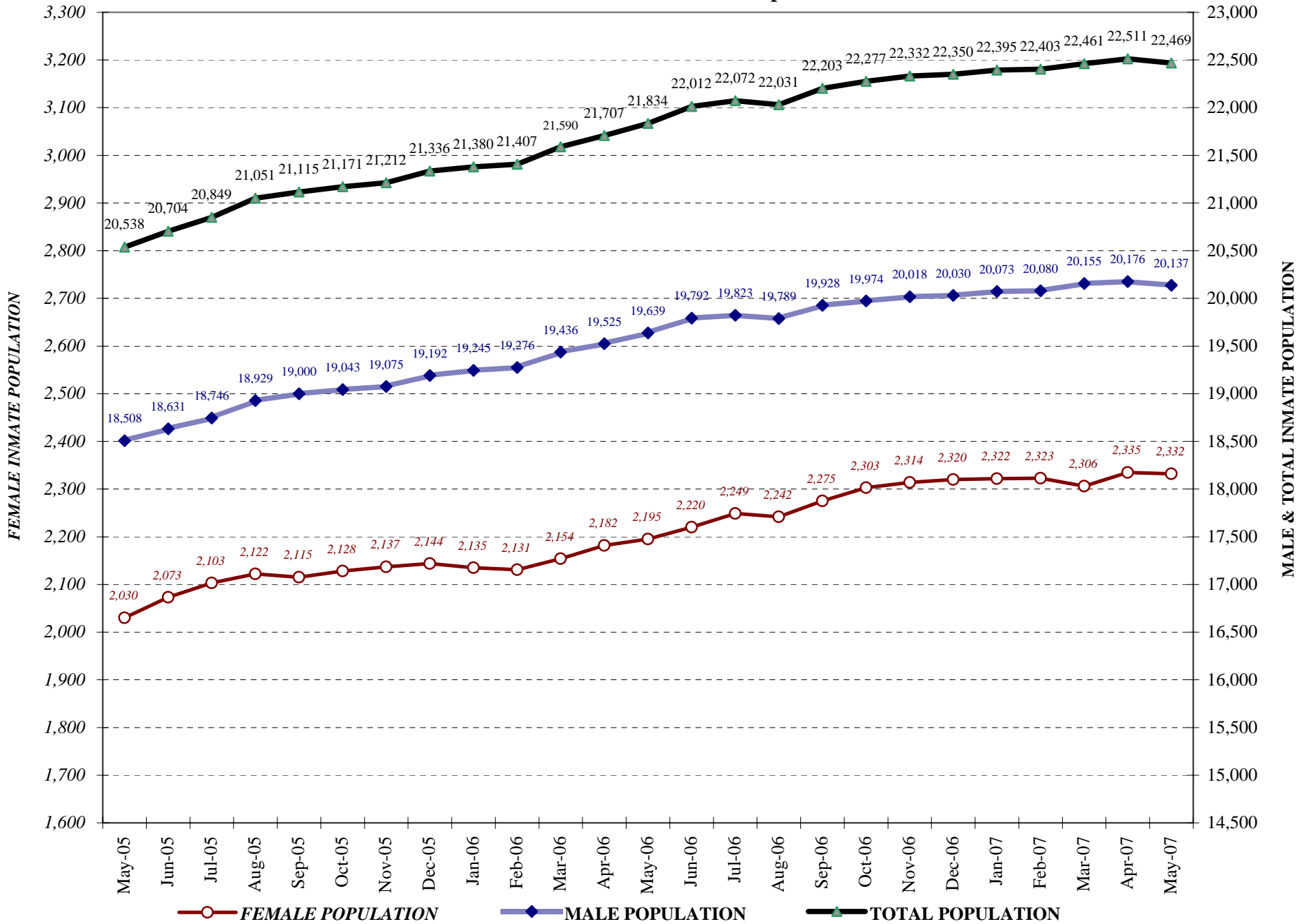
COLORADO DEPARTMENT OF CORRECTIONS

Adult Prison Releases

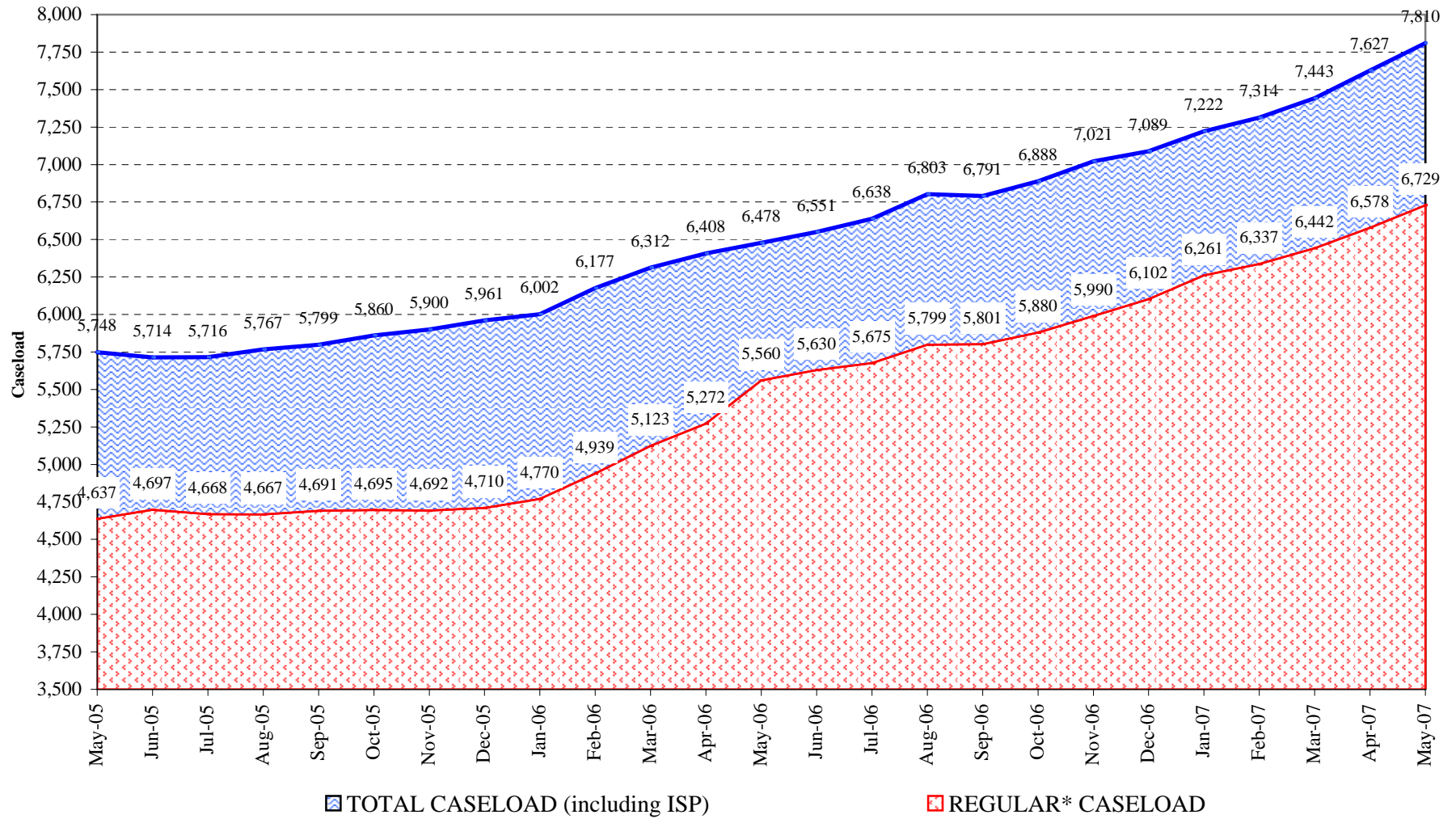


Total releases include releases to discretionary parole, mandatory parole and reparaole, all types of discharges and other releases as detailed on the previous page.

COLORADO DEPARTMENT OF CORRECTIONS Adult Jurisdictional Inmate Population



COLORADO DEPARTMENT OF CORRECTIONS Parole Population



* Regular caseload includes interstate parole, but excludes out-of-state parolees and absconders.