

**COLORADO DEPARTMENT OF CORRECTIONS
MONTHLY POPULATION AND CAPACITY REPORT
AS OF APRIL 30, 2007**

3-May-07

	03/31/07	CAPACITY CHANGES	----- 04/30/07 -----		----- 04/30/06 -----	
	OPERATIONAL CAPACITY*		OPERATIONAL CAPACITY*	ON-GRDS POPULATION	OPERATIONAL CAPACITY*	ON-GRDS POPULATION
COLO STATE PENITENTIARY	756		756	751	756	753
CENTENNIAL CORR FAC	336		336	324	336	322
STERLING CORR FAC	2,545		2,545	2,499	2,445	2,366
LIMON CORR FAC	953		953	947	953	938
ARK VALLEY CORR FAC	1,007		1,007	1,006	1,007	999
BUENA VISTA CORR FAC	926		926	913	826	825
BUENA VISTA MIN CTR	292		292	283	292	288
COLO TERR CORR FAC	786		786	786	786	794
FORT LYON CORR FAC	500		500	492	500	472
FREMONT CORR FAC	1,471		1,471	1,470	1,471	1,467
LA VISTA CORR FAC	472	47	519	515	72	70
ARROWHEAD CORR CTR	494		494	489	494	485
FOUR MILE CORR CTR	499		499	496	499	497
PUEBLO MINIMUM CTR	0		0	0	184	181
TRINIDAD CORR FAC	484		484	467	484	479
S.T.U. at Y.O.S.	30		30	28	30	26
SKYLINE CORR CTR	249		249	246	249	246
COLORADO CORR CTR	150		150	139	150	149
DELTA CORR CTR	484		484	461	484	469
RIFLE CORR CTR	192		192	184	192	185
COLO CORR ALT PROGRAM	100		100	90	100	94
COLO WOMEN'S CORR FAC	224		224	217	224	223
DENVER WOMEN'S CORR FAC	900		900	831	900	857
DENVER REC DIAG CTR	480		480	494	480	468
SAN CARLOS CORR FAC	255		255	244	255	249
SUBTOTAL	14,585	47	14,632	14,372	14,169	13,902
CONTRACTS:						
BENT COUNTY CORR CTR	724		724	667	724	690
HUERFANO COUNTY CORR CTR	774		774	716	774	737
CROWLEY COUNTY CORR FAC	1,720		1,720	1,469	1,754	1,135
KIT CARSON COUNTY CORR FAC	820		820	775	824	726
CHEYENNE MTN REENTRY CTR	500		500	488	500	475
BRUSH CORR FAC	270		270	180	270	239
NORTH FORK OK CORR FAC	480		480	480	0	0
OFF-GROUNDS POPULATION:						
ESCAPEES/WALKAWAYS				242		214
REVOCATIONS-JAIL				234		251
				0		0
JAIL BACKLOG:						
BACKLOG LESS THAN 72 HOURS			115		120	
BACKLOG GREATER THAN 72 HOURS (FISCAL YTD AVE = 354)			46		531	
BACKLOG-PAROLEES AWAITING TRANSFER			62		110	
TOTAL JAIL BACKLOG				223		761
COUNTY JAIL CONTRACTS				83		0
COMMUNITY CORRECTIONS						
COMMUNITY						
RESIDENTIAL	1,362	-1	1,361	1,361	1,345	1,345
PAROLE REVOCATIONS	0	1	1	1	0	0
REVOKED-RET TO CUST	230	7	237	237	227	227
NON-RESIDENTIAL	41	7	48	48	57	57
REGRESSIONS	47	-18	29	29	51	51
TOTAL COMMUNITY	1,680	-4	1,676	1,676	1,680	1,680
ISP						
RESIDENTIAL	870	-11	859	859	853	853
NON-RESIDENTIAL	38	6	44	44	35	35
REGRESSIONS	9	-6	3	3	9	9
TOTAL ISP	917	-11	906	906	897	897
TOTAL COMM. CORRECTIONS	2,597	-15	2,582	2,582	2,577	2,577
MALE POPULATION			20,176		19,525	
FEMALE POPULATION			2,335		2,182	
TOTAL INMATE JURISDICTIONAL POPULATION				22,511		21,707

*OPERATIONAL CAPACITY INCLUDES ALL BEDS AVAILABLE FOR USE, INCLUDING MANAGEMENT CONTROL UNITS, BU
EXCLUDES EMERGENCY DOUBLE BUNKING

**COLORADO DEPARTMENT OF CORRECTIONS
MONTHLY POPULATION AND CAPACITY REPORT
AS OF APRIL 30, 2007**

	04/30/2007 Population			----- FINAL CUSTODY DESIGNATION* -----					
	On-Grds.	Off-Grds	Total	Uncls.	Ad.Seg	Close	Medium	Min.-Res.	Minimum
COLO STATE PENITENTIARY	751	5	756		753	2		1	
CENTENNIAL CORR FAC	324	2	326		135	186	3	2	
STERLING CORR FAC	2,499	27	2,526		241	757	533	589	406
LIMON CORR FAC	947	10	957		11	697	176	55	18
ARK VALLEY CORR FAC	1,006	20	1,026		8	456	359	145	58
BUENA VISTA CORR FAC	913	30	943		1	397	359	124	62
BUENA VISTA MIN CTR	283	3	286					219	67
COLO TERR CORR FAC	785	11	796		6	180	255	200	155
FORT LYON CORR FAC	492	4	496			36	264	118	78
FREMONT CORR FAC	1,470	9	1,479	1	11	154	412	567	334
ARROWHEAD CORR CTR	489	3	492				2	295	195
FOUR MILE CORR CTR	496	4	500				1	342	157
TRINIDAD CORR FAC	467	12	479				9	397	73
S.T.U. at Y.O.S.	28	2	30				4	25	1
SKYLINE CORR CTR	246	0	246						246
COLORADO CORR CTR	139	1	140					2	138
DELTA CORR CTR	461	2	463				1	1	461
RIFLE CORR CTR	184	4	188				6	3	179
COLO CORR ALT PROGRAM	83	5	88				1	5	82
DENVER REC DIAG CTR	492	6	498	170	6	39	97	130	56
SAN CARLOS CORR FAC	244	3	247		25	104	50	37	31
CONTRACTS:									
BENT COUNTY CORR CTR	667	8	675			7	327	196	145
HUERFANO COUNTY CORR CTR	716	10	726			15	338	221	152
CROWLEY COUNTY CORR FAC	1,469	15	1,484		1	12	761	479	231
KIT CARSON COUNTY CORR FAC	775	12	787			21	427	219	120
CHEYENNE MTN REENTRY CTR	488	7	495			1	128	235	131
NORTH FORK OK CORR FAC	480	0	480				250	177	53
COMMUNITY/ISP	1,780	75	1,855			2	27	35	1,791
Total Classified Male Population	19,174	290	19,464	171	1,198	3,066	4,790	4,819	5,420
Percent of Total				0.9%	6.2%	15.8%	24.6%	24.8%	27.8%
Unclassified Facilities:									
JAIL BACKLOG	197	0	197						
COUNTY JAIL CONTRACTS	83	0	83						
REVOKED TO JAIL	0	0	0						
REVOKED TO COMM CTR	1	0	1						
REVOKED-RET TO CUST FAC	152	55	207						
COMM/ISP REGRESSIONS	0	23	23						
ESCAPEES/WALKAWAYS	43	158	201						
Total Unclassified Facilities	476	236	712						
Total Male Population	19,650	526	20,176						
COLO WOMEN'S CORR FAC	217	1	218		1	43	38	69	67
DENVER WOMEN'S CORR FAC	831	10	841	15	23	129	118	336	220
LA VISTA CORR FAC	515	11	526			56	94	240	136
COLO CORR ALT PROGRAM	7	0	7						7
DENVER REC DIAG CTR INF	2	0	2				2		
COLO TERR CORR FAC INF.	1	0	1			1			
CONTRACTS:									
BRUSH CORR FAC	180	5	185				24	89	72
COMMUNITY/ISP	440	17	457			3	6	17	431
Total Classified Female Population	2,193	44	2,237	15	24	232	282	751	933
Percent of Total				0.7%	1.1%	10.4%	12.6%	33.6%	41.7%
Unclassified Facilities:									
JAIL BACKLOG	26	0	26						
COUNTY JAIL CONTRACTS	0	0	0						
REVOKED TO JAIL	0	0	0						
REVOKED TO COMM CTR	0	0	0						
REVOKED-RET TO CUST FAC	26	4	30						
COMM/ISP REGRESSIONS	0	9	9						
ESCAPEES/WALKAWAYS	1	32	33						
Total Unclassified Facilities	53	45	98						
Total Female Population	2,246	89	2,335						

COLORADO DEPARTMENT OF CORRECTIONS

ADULT INMATE JURISDICTIONAL POPULATION (1)

DATE: 5/3/2007

DATE	MALE POPULATION			FEMALE POPULATION			TOTAL POPULATION		
	Male Population	Net Change	Fiscal Y-T-D Average	Female Population	Net Change	Fiscal Y-T-D Average	Total Population	Net Change	Fiscal Y-T-D Average
04-30-07	20,176	21	38	2,335	29	12	22,511	50	50
03-31-07	20,155	75		2,306	-17		22,461	58	
02-28-07	20,080	7		2,323	1		22,403	8	
01-31-07	20,073	43		2,322	2		22,395	45	
12-31-06	20,030	12		2,320	6		22,350	18	
11-30-06	20,018	44		2,314	11		22,332	55	
10-31-06	19,974	46		2,303	28		22,277	74	
09-30-06	19,928	139		2,275	33		22,203	172	
08-31-06	19,789	-34		2,242	-7		22,031	-41	
07-31-06	19,823	31		2,249	29		22,072	60	
06-30-06	19,792	153		2,220	25		22,012	178	
05-31-06	19,639	114		2,195	13		21,834	127	
04-30-06	19,525	89		2,182	28		21,707	117	
03-31-06	19,436	160		2,154	23		21,590	183	
02-28-06	19,276	31		2,131	-4		21,407	27	
01-31-06	19,245	53		2,135	-9		21,380	44	
12-31-05	19,192	117	97	2,144	7	12	21,336	124	109
11-30-05	19,075	32		2,137	9		21,212	41	
10-31-05	19,043	43		2,128	13		21,171	56	
09-30-05	19,000	71		2,115	-7		21,115	64	
08-31-05	18,929	183		2,122	19		21,051	202	
07-31-05	18,746	115		2,103	30		20,849	145	
06-30-05	18,631	123		2,073	43		20,704	166	
05-31-05	18,508	70		2,030	16		20,538	86	
04-30-05	18,438	102		2,014	32		20,452	134	
03-31-05	18,336	79		1,982	-10		20,318	69	
02-28-05	18,257	30		1,992	26		20,249	56	
01-31-05	18,227	-2		1,966	51		20,193	49	
12-31-04	18,229	56	68	1,915	11	27	20,144	67	95
11-30-04	18,173	79		1,904	27		20,077	106	
10-31-04	18,094	99		1,877	24		19,971	123	
09-30-04	17,995	-18		1,853	44		19,848	26	
08-31-04	18,013	95		1,809	44		19,822	139	
07-31-04	17,918	104		1,765	10		19,683	114	
06-30-04	17,814		49	1,755		11	19,569		60
06-30-03	17,226		57	1,620		10	18,846		67
06-30-02	16,539		87	1,506		14	18,045		101
06-30-01	15,493		63	1,340		6	16,833		70
06-30-00	14,733		99	1,266		7	15,999		106
06-30-99	13,547		75	1,179		14	14,726		89
06-30-98	12,647		81	1,016		9	13,663		89
06-30-97	11,681			909			12,590		

(1) Adult inmate jurisdictional population includes on-grounds, off-grounds, out-of-state, escapees, and jail backlog and excludes offenders sentenced to the Youthful Offender System (Y.O.S.).

COLORADO DEPARTMENT OF CORRECTIONS
ADULT INMATE RELEASES FROM PRISON
TOTAL Population (Male and Female)

Date: 5/3/2007

	Parole				Discharge					Other				Total
	Discretionary*	Mandatory*	Mand. Repar.*	Com. Supv.	Sentence	H.B. 1087	Martin/Cooper	Chgs/Det.	Com Spv. Elim	Probation	Ct. Ord. Dsch.	Appeal Bond	Deceased	
Apr-07	447	197	100	0	26	51	9	16	0	6	10	0	6	868
Mar-07	415	187	140	0	33	64	4	14	0	14	13	1	3	888
Feb-07	405	235	80	0	24	58	12	19	0	15	5	0	0	853
Jan-07	542	192	42	0	37	59	5	15	0	15	16	0	9	932
Dec-06	349	179	59	0	27	44	10	14	0	13	6	1	2	704
Nov-06	422	202	70	0	30	45	12	12	0	16	11	0	6	826
Oct-06	426	186	84	0	36	44	11	10	0	6	7	1	5	816
Sep-06	348	180	65	0	29	44	13	15	0	13	7	0	2	716
Aug-06	430	239	104	0	37	52	10	21	0	17	11	0	2	923
Jul-06	350	174	87	0	43	52	9	20	0	17	6	0	7	765
Jun-06	375	199	89	0	37	43	10	16	0	16	7	0	2	794
May-06	317	235	75	0	34	52	10	15	0	13	9	0	3	763
Apr-06	227	235	91	0	41	54	17	17	0	10	7	0	8	707
Mar-06	305	282	113	0	39	46	10	12	0	18	5	1	2	833
Feb-06	305	250	71	0	34	39	13	10	0	27	14	0	1	764
Jan-06	316	218	75	0	45	51	11	14	0	13	6	0	7	756
Dec-05	235	238	98	0	51	47	15	17	0	18	12	0	6	737
Nov-05	183	297	126	0	37	55	7	13	0	10	18	0	5	751
Oct-05	157	304	130	0	34	58	11	19	0	17	10	1	5	746
Sep-05	142	318	90	0	30	61	17	14	0	23	6	0	3	704
Aug-05	124	312	109	0	33	47	17	20	0	14	11	0	6	693
Jul-05	121	306	109	0	46	48	13	13	0	15	9	0	8	688
Jun-05	144	312	105	0	28	57	13	16	0	22	13	0	0	710
May-05	148	313	95	0	42	61	8	14	0	16	7	1	7	712

Definitions of Release Types

Discretionary parole-Released to parole through Parole Board discretion prior to mandatory release or sentence discharge date.

Mandatory parole-Released to parole on mandatory release date.

Mand. Repar-Reparoled on specific date set by Parole Board (includes S.B. 252 reparoles). n/a - breakout not available prior to June 2004.

Com. Supv.-Released to serve 12 months of community supervision.

Sentence discharge-Completion of sentence with no further supervision.

H.B. 1087 discharge-Completion of sentence with no further supervision, subject to earn time provisions of H.B. 95-1087.

Martin/ Cooper discharge-Completion of sentence with no further supervision, sex offender subject to Martin/Cooper Supreme Court decision.

Chgs/ Det. discharge-Completion of sentence, released to other law enforcement for pending charges or detainees.

Com. Spv. Elim discharge-Completion of sentence following reincarceration on community supervision sentence.

Probation-Released by court to probation.

Ct. Ord. Dsch.-Released by court order.

Appeal Bond-Released by court to appeal bond.

Deceased-Offender death in prison.

***Due to the decrease in community transportation services, the Department implemented a procedural change in December 2005 with regards to releasing inmates on weekends. As a result of this change, discretionary releases have increased and mandatory releases have decreased.**

COLORADO DEPARTMENT OF CORRECTIONS
ADULT INMATE RELEASES FROM PRISON
Male Population Only

Date: 5/3/2007

	Parole				Discharge					Other				Total
	Discretionary*	Mandatory*	Mand. Repar.*	Com. Supv.	Sentence	H.B. 1087	Martin/Cooper	Chgs/Det.	Com Spv. Elim	Probation	Ct. Ord. Dsch.	Appeal Bond	Deceased	
Apr-07	382	179	90	0	24	47	8	15	0	4	8	0	6	763
Mar-07	344	166	118	0	28	56	4	14	0	10	13	0	3	756
Feb-07	330	209	71	0	23	51	11	16	0	14	5	0	0	730
Jan-07	453	169	37	0	34	53	5	15	0	14	13	0	7	800
Dec-06	298	160	56	0	24	38	10	14	0	13	6	1	2	622
Nov-06	358	178	62	0	28	42	12	12	0	13	10	0	6	721
Oct-06	373	163	73	0	34	36	11	9	0	6	6	1	5	717
Sep-06	300	148	59	0	29	40	13	12	0	12	7	0	2	622
Aug-06	364	209	89	0	34	44	10	21	0	14	10	0	2	797
Jul-06	310	158	72	0	40	45	9	18	0	15	4	0	7	678
Jun-06	325	180	74	0	32	41	10	13	0	15	6	0	2	698
May-06	269	202	60	0	33	47	10	15	0	12	8	0	3	659
Apr-06	178	213	79	0	35	47	17	16	0	9	6	0	8	608
Mar-06	267	246	100	0	36	41	10	12	0	14	5	1	2	734
Feb-06	253	220	63	0	33	37	13	10	0	25	14	0	1	669
Jan-06	266	187	63	0	43	48	11	13	0	12	5	0	6	654
Dec-05	193	204	84	0	48	43	15	17	0	16	11	0	4	635
Nov-05	156	251	114	0	32	47	7	12	0	10	17	0	4	650
Oct-05	127	273	101	0	32	50	11	17	0	15	10	1	4	641
Sep-05	111	283	78	0	26	57	16	12	0	22	6	0	3	614
Aug-05	98	280	94	0	31	41	17	19	0	12	8	0	6	606
Jul-05	100	253	95	0	43	47	13	13	0	11	8	0	8	591
Jun-05	113	280	94	0	25	52	13	13	0	20	13	0	0	623
May-05	127	270	83	0	39	54	8	14	0	15	6	1	6	623

Definitions of Release Types

Discretionary parole-Released to parole through Parole Board discretion prior to mandatory release or sentence discharge date.

Mandatory parole-Released to parole on mandatory release date.

Mand. Repar-Reparoled on specific date set by Parole Board (includes S.B. 252 reparoles). n/a - breakout not available prior to June 2004.

Com. Supv.-Released to serve 12 months of community supervision.

Sentence discharge-Completion of sentence with no further supervision.

H.B. 1087 discharge-Completion of sentence with no further supervision, subject to earn time provisions of H.B. 95-1087.

Martin/ Cooper discharge-Completion of sentence with no further supervision, sex offender subject to Martin/Cooper Supreme Court decision.

Chgs/ Det. discharge-Completion of sentence, released to other law enforcement for pending charges or detainees.

Com. Spv. Elim discharge-Completion of sentence following reincarceration on community supervision sentence.

Probation-Released by court to probation.

Ct. Ord. Dsch.-Released by court order.

Appeal Bond-Released by court to appeal bond.

Deceased-Offender death in prison.

***Due to the decrease in community transportation services, the Department implemented a procedural change in December 2005 with regards to releasing inmates on weekends. As a result of this change, discretionary releases have increased and mandatory releases have decreased.**

COLORADO DEPARTMENT OF CORRECTIONS
ADULT INMATE RELEASES FROM PRISON
Female Population Only

Date: 5/3/2007

	Parole				Discharge					Other				Total
	Discretionary*	Mandatory*	Mand. Repar.*	Com. Supv.	Sentence	H.B. 1087	Martin/Cooper	Chgs/Det.	Com Spv. Elim	Probation	Ct. Ord. Dsch.	Appeal Bond	Deceased	
Apr-07	65	18	10	0	2	4	1	1	0	2	2	0	0	105
Mar-07	71	21	22	0	5	8	0	0	0	4	0	1	0	132
Feb-07	75	26	9	0	1	7	1	3	0	1	0	0	0	123
Jan-07	89	23	5	0	3	6	0	0	0	1	3	0	2	132
Dec-06	51	19	3	0	3	6	0	0	0	0	0	0	0	82
Nov-06	64	24	8	0	2	3	0	0	0	3	1	0	0	105
Oct-06	53	23	11	0	2	8	0	1	0	0	1	0	0	99
Sep-06	48	32	6	0	0	4	0	3	0	1	0	0	0	94
Aug-06	66	30	15	0	3	8	0	0	0	3	1	0	0	126
Jul-06	40	16	15	0	3	7	0	2	0	2	2	0	0	87
Jun-06	50	19	15	0	5	2	0	3	0	1	1	0	0	96
May-06	48	33	15	0	1	5	0	0	0	1	1	0	0	104
Apr-06	49	22	12	0	6	7	0	1	0	1	1	0	0	99
Mar-06	38	36	13	0	3	5	0	0	0	4	0	0	0	99
Feb-06	52	30	8	0	1	2	0	0	0	2	0	0	0	95
Jan-06	50	31	12	0	2	3	0	1	0	1	1	0	1	102
Dec-05	42	34	14	0	3	4	0	0	0	2	1	0	2	102
Nov-05	27	46	12	0	5	8	0	1	0	0	1	0	1	101
Oct-05	30	31	29	0	2	8	0	2	0	2	0	0	1	105
Sep-05	31	35	12	0	4	4	1	2	0	1	0	0	0	90
Aug-05	26	32	15	0	2	6	0	1	0	2	3	0	0	87
Jul-05	21	53	14	0	3	1	0	0	0	4	1	0	0	97
Jun-05	31	32	11	0	3	5	0	3	0	2	0	0	0	87
May-05	21	43	12	0	3	7	0	0	0	1	1	0	1	89

Definitions of Release Types

Discretionary parole-Released to parole through Parole Board discretion prior to mandatory release or sentence discharge date.

Mandatory parole-Released to parole on mandatory release date.

Mand. Repar-Reparoled on specific date set by Parole Board (includes S.B. 252 reparoles). n/a - breakout not available prior to June 2004.

Com. Supv.-Released to serve 12 months of community supervision.

Sentence discharge-Completion of sentence with no further supervision.

H.B. 1087 discharge-Completion of sentence with no further supervision, subject to earn time provisions of H.B. 95-1087.

Martin/ Cooper discharge-Completion of sentence with no further supervision, sex offender subject to Martin/Cooper Supreme Court decision.

Chgs/ Det. discharge-Completion of sentence, released to other law enforcement for pending charges or detainees.

Com. Spv. Elim discharge-Completion of sentence following reincarceration on community supervision sentence.

Probation-Released by court to probation.

Ct. Ord. Dsch.-Released by court order.

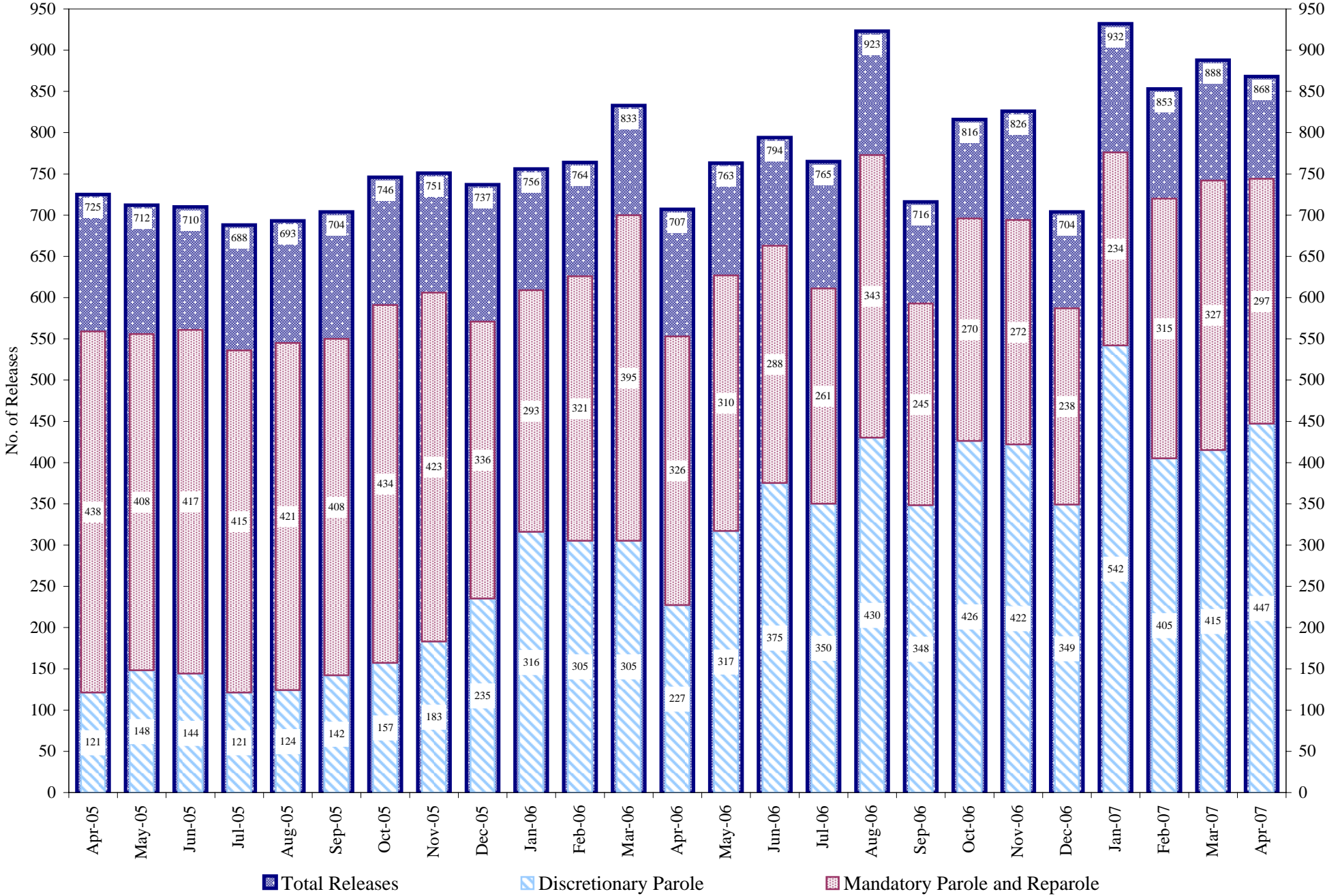
Appeal Bond-Released by court to appeal bond.

Deceased-Offender death in prison.

*Due to the decrease in community transportation services, the Department implemented a procedural change in December 2005 with regards to releasing inmates on weekends. As a result of this change, discretionary releases have increased and mandatory releases have decreased.

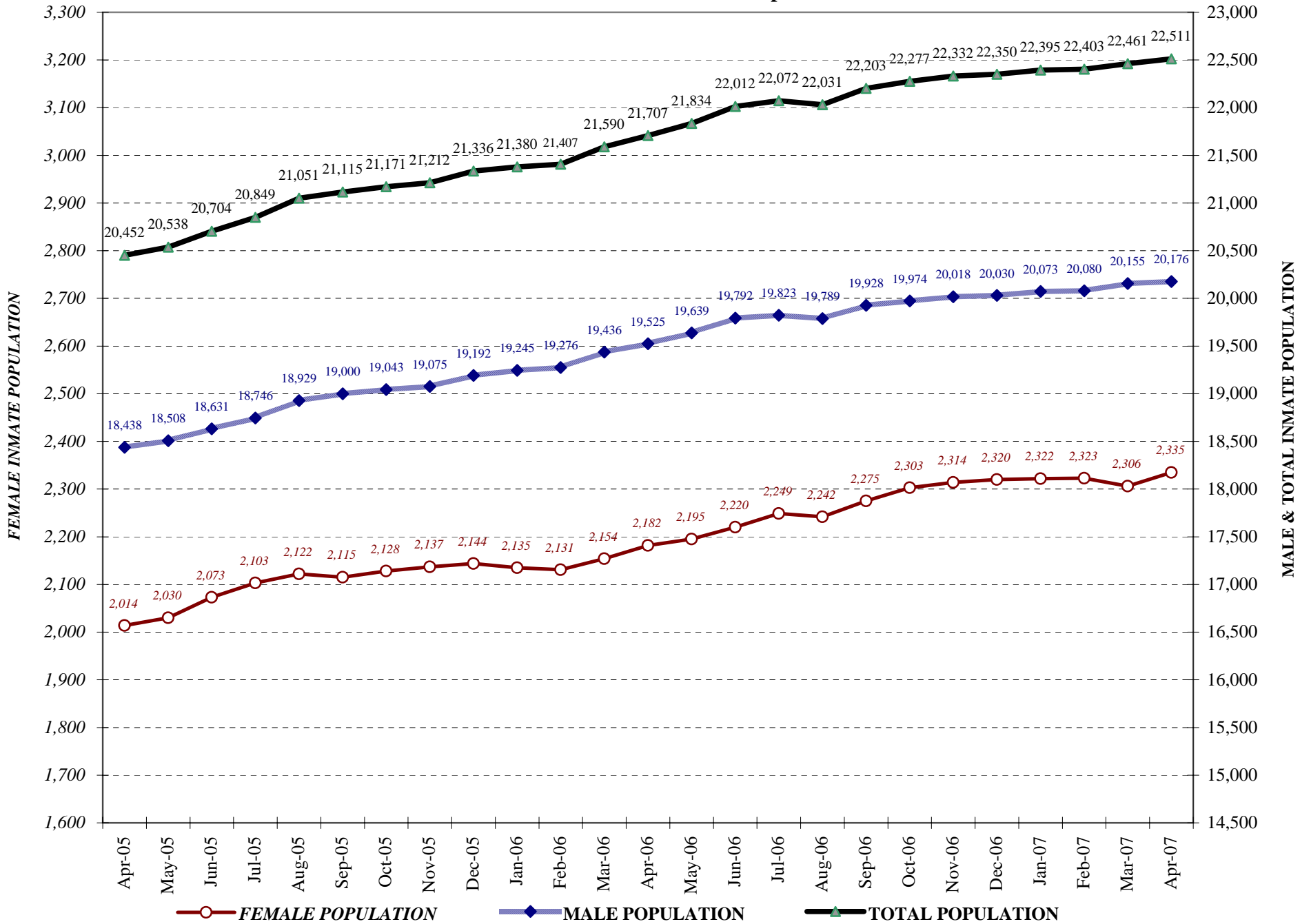
COLORADO DEPARTMENT OF CORRECTIONS

Adult Prison Releases

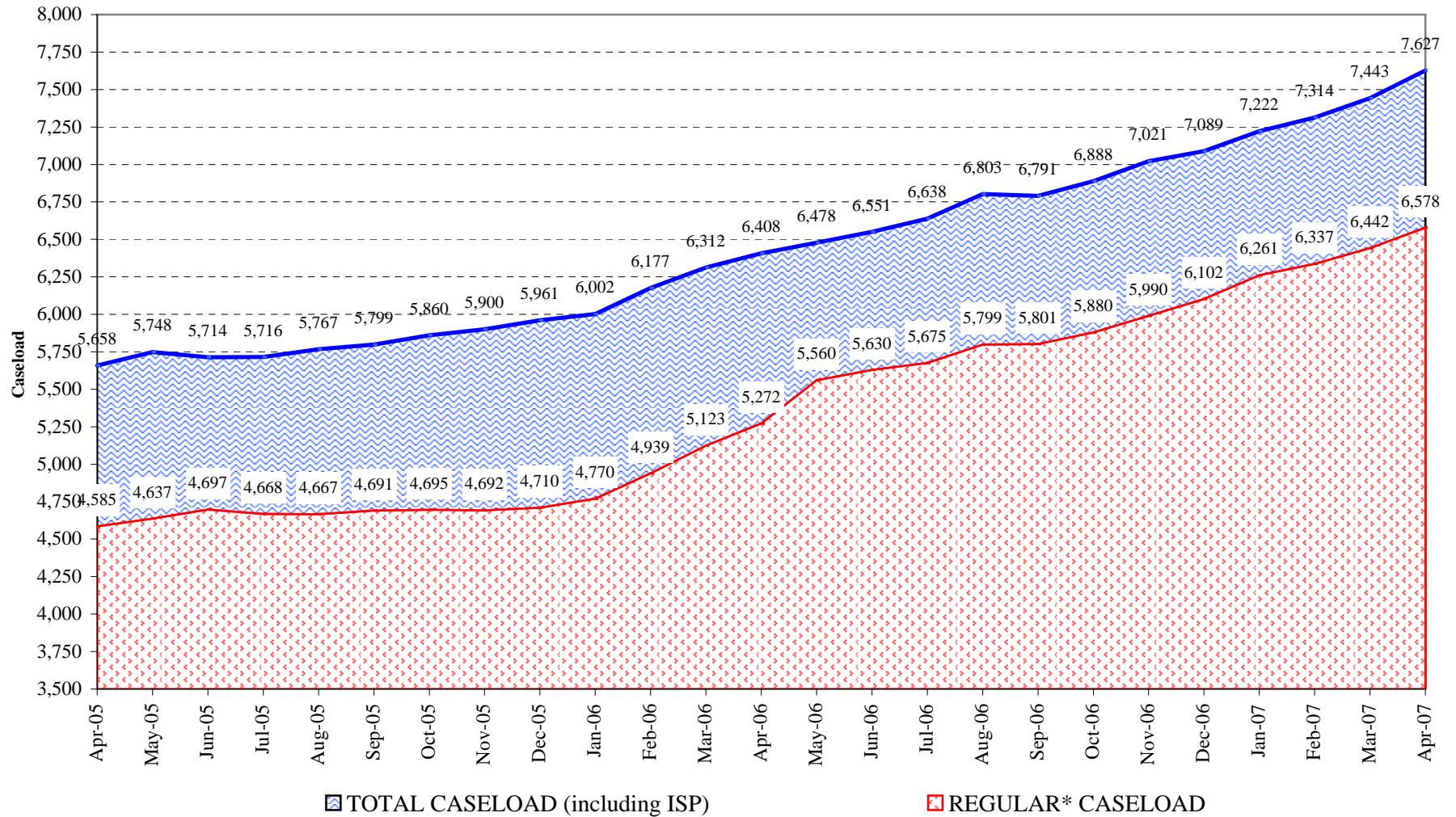


Total releases include releases to discretionary parole, mandatory parole and reparole, all types of discharges and other releases as detailed on the previous page.

COLORADO DEPARTMENT OF CORRECTIONS Adult Jurisdictional Inmate Population



COLORADO DEPARTMENT OF CORRECTIONS Parole Population



* Regular caseload includes interstate parole, but excludes out-of-state parolees and absconders.