

**COLORADO DEPARTMENT OF CORRECTIONS
MONTHLY POPULATION AND CAPACITY REPORT
AS OF MARCH 31, 2007**

6-Sep-07

	02/28/07	CAPACITY CHANGES	----- 03/31/07 -----		----- 03/31/06 -----	
	OPERATIONAL CAPACITY*		OPERATIONAL CAPACITY*	ON-GRDS POPULATION	OPERATIONAL CAPACITY*	ON-GRDS POPULATION
COLO STATE PENITENTIARY	756		756	753	756	752
CENTENNIAL CORR FAC	336		336	329	336	327
STERLING CORR FAC	2,541	4	2,545	2,539	2,445	2,367
LIMON CORR FAC	953		953	954	953	945
ARK VALLEY CORR FAC	1,007		1,007	1,002	1,007	1,000
BUENA VISTA CORR FAC	826	100	926	850	826	826
BUENA VISTA MIN CTR	292		292	276	292	288
COLO TERR CORR FAC	786		786	770	786	795
FORT LYON CORR FAC	500		500	484	500	439
FREMONT CORR FAC	1,471		1,471	1,467	1,471	1,454
LA VISTA CORR FAC	472		472	476	0	0
ARROWHEAD CORR CTR	494		494	489	494	490
FOUR MILE CORR CTR	499		499	495	499	496
PUEBLO MINIMUM CTR	0		0	0	256	250
TRINIDAD CORR FAC	484		484	476	484	473
S.T.U. at Y.O.S.	30		30	17	30	30
SKYLINE CORR CTR	249		249	248	249	238
COLORADO CORR CTR	150		150	141	150	150
DELTA CORR CTR	484		484	462	484	462
RIFLE CORR CTR	192		192	187	192	191
COLO CORR ALT PROGRAM	100		100	84	100	108
COLO WOMEN'S CORR FAC	224		224	216	224	221
DENVER WOMEN'S CORR FAC	900		900	814	900	888
DENVER REC DIAG CTR	480		480	472	480	467
SAN CARLOS CORR FAC	255		255	248	255	254
SUBTOTAL	14,481	104	14,585	14,249	14,169	13,911
CONTRACTS:						
BENT COUNTY CORR CTR	724		724	669	724	719
HUERFANO COUNTY CORR CTR	774		774	714	778	724
CROWLEY COUNTY CORR FAC	1,720		1,720	1,478	1,820	1,131
KIT CARSON COUNTY CORR FAC	820		820	728	820	726
CHEYENNE MTN REENTRY CTR	500		500	503	500	449
BRUSH CORR FAC	270		270	219	270	235
NORTH FORK OK CORR FAC	480		480	479	0	0
OFF-GROUNDS POPULATION:				217		224
ESCAPEES/WALKAWAYS				230		256
REVOCATIONS-JAIL				1		0
JAIL BACKLOG:						
BACKLOG LESS THAN 72 HOURS			139		111	
BACKLOG GREATER THAN 72 HOURS (FISCAL YTD AVE = 371)			95		514	
BACKLOG-PAROLEES AWAITING TRANSFER			75		64	
TOTAL JAIL BACKLOG				309		689
COUNTY JAIL CONTRACTS				68		19
COMMUNITY CORRECTIONS						
COMMUNITY						
RESIDENTIAL	1,316	46	1,362	1,362	1,276	1,276
PAROLE REVOCATIONS	0	0	0	0	0	0
REVOKED-RET TO CUST	231	-1	230	230	218	218
NON-RESIDENTIAL	44	-3	41	41	62	62
REGRESSIONS	39	8	47	47	56	56
TOTAL COMMUNITY	1,630	50	1,680	1,680	1,612	1,612
ISP						
RESIDENTIAL	857	13	870	870	848	848
NON-RESIDENTIAL	39	-1	38	38	34	34
REGRESSIONS	11	-2	9	9	13	13
TOTAL ISP	907	10	917	917	895	895
TOTAL COMM. CORRECTIONS	2,537	60	2,597	2,597	2,507	2,507
MALE POPULATION			20,155		19,436	
FEMALE POPULATION			2,306		2,154	
TOTAL INMATE JURISDICTIONAL POPULATION				22,461		21,590

*OPERATIONAL CAPACITY INCLUDES ALL BEDS AVAILABLE FOR USE, INCLUDING MANAGEMENT CONTROL UNITS, BU
EXCLUDES EMERGENCY DOUBLE BUNKING

COLORADO DEPARTMENT OF CORRECTIONS
MONTHLY POPULATION AND CAPACITY REPORT
AS OF MARCH 31, 2007

6-Sep-07

CURRENT MONTH CHANGES IN CAPACITY:

Mar-07	STERLING CORR FAC	INCREASE CAPACITY	4
Mar-07	BUENA VISTA CORR FAC	INCREASE CAPACITY	100

NET MONTHLY GROWTH RATE:

CURRENT MONTH	58
FISCAL YEAR-TO-DATE AVERAGE	50

YOUTHFUL OFFENDER SYSTEM

	----- 03/31/07 -----				03/31/06
	PUEBLO	CONTRACT FACILITIES	COMM. CORR.	TOTAL POPULATION	TOTAL POPULATION
INTAKE/IDO	8			8	8
RFP/REMEDICATION	9			9	15
PHASE I	154	0		154	134
PHASE II	10			10	15
PHASE III	0		25	25	42
OFF GROUNDS/BACKLOG				5	2
TOTAL Y.O.S. POPULATION	181	0	25	211	216

	CURRENT MONTH	FISCAL YR. TO DATE
YOS ADMISSIONS	3	46
YOS RELEASES:		
COMPLETION OF SENTENCE	5	40
JUDICIAL RELEASE TO PROB/CT ORD DISCHG	0	2
JUDICIAL TRANSFER TO DOC	0	0
TERMINATION/FAILURE	1	10
DECEASED	0	1
TOTAL RELEASES	6	53

PAROLE CASELOAD

	----- 03/31/07 -----			----- 02/28/07 -----		----- 03/31/06 -----	
	DOMESTIC	INTERST PAR/PROB	TOTAL CASELOAD	DOMESTIC	TOTAL CASELOAD	DOMESTIC	TOTAL CASELOAD
DENVER REGION							
REGULAR	2,347	100	2,447	2,333	2,433	1,848	1,948
ISP	467		467	446	446	602	602
SUBTOTAL	2,814	100	2,914	2,779	2,879	2,450	2,550
NORTHEAST REGION							
REGULAR	1,692	49	1,741	1,662	1,712	1,320	1,362
ISP	212		212	203	203	292	292
SUBTOTAL	1,904	49	1,953	1,865	1,915	1,612	1,654
SOUTHEAST REGION							
REGULAR	1,495	86	1,581	1,453	1,537	1,144	1,216
ISP	210		210	223	223	225	225
SUBTOTAL	1,705	86	1,791	1,676	1,760	1,369	1,441
WESTERN REGION							
REGULAR	635	38	673	616	655	557	597
ISP	112		112	105	105	70	70
SUBTOTAL	747	38	785	721	760	627	667
TOTAL CASELOAD							
REGULAR	6,169	273	6,442	6,064	6,337	4,869	5,123
ISP	1,001		1,001	977	977	1,189	1,189
TOTAL	7,170	273	7,443	7,041	7,314	6,058	6,312
ADDITIONAL CASELOAD:							
OUT-OF-STATE PAROLEES			1,799		1,763		1,640
PAROLEE ABSCONDERS			754		773		607

COLORADO DEPARTMENT OF CORRECTIONS
MONTHLY POPULATION AND CAPACITY REPORT
AS OF MARCH 31, 2007

	03/31/2007 Population			----- FINAL CUSTODY DESIGNATION* -----					
	On-Grds.	Off-Grds.	Total	Uncls.	Ad.Seg	Close	Medium	Min.-Res.	Minimum
Male Population									
COLO STATE PENITENTIARY	753	3	756		755				1
CENTENNIAL CORR FAC	329	2	331		139	188	3		1
STERLING CORR FAC	2,539	27	2,566		245	752	569	588	412
LIMON CORR FAC	954	7	961		9	711	168	56	17
ARK VALLEY CORR FAC	1,002	13	1,015		4	463	346	144	58
BUENA VISTA CORR FAC	850	15	865		9	391	301	107	57
BUENA VISTA MIN CTR	276	1	277				3	213	61
COLO TERR CORR FAC	770	7	777		5	192	238	200	142
FORT LYON CORR FAC	484	7	491			31	258	120	82
FREMONT CORR FAC	1,467	9	1,476		8	151	426	559	332
ARROWHEAD CORR CTR	489	4	493			1	1	284	207
FOUR MILE CORR CTR	495	9	504				1	340	163
TRINIDAD CORR FAC	476	10	486				4	426	56
S.T.U. at Y.O.S.	17	0	17				2	11	4
SKYLINE CORR CTR	248	0	248				0	1	247
COLORADO CORR CTR	141	0	141				0	2	139
DELTA CORR CTR	462	4	466				1	3	462
RIFLE CORR CTR	187	2	189				0	1	188
COLO CORR ALT PROGRAM	77	2	79				2	4	73
DENVER REC DIAG CTR	472	12	484	146	4	44	110	132	48
SAN CARLOS CORR FAC	248	6	254		24	105	50	42	33
CONTRACTS:									
BENT COUNTY CORR CTR	669	9	678		0	6	318	205	149
HUERFANO COUNTY CORR CTR	714	9	723		3	14	356	199	151
CROWLEY COUNTY CORR FAC	1,478	27	1,505		1	7	801	467	229
KIT CARSON COUNTY CORR FAC	728	11	739		5	19	391	213	111
CHEYENNE MTN REENTRY CTR	503	2	505		0	3	136	251	115
NORTH FORK OK CORR FAC	479	0	479		0	1	259	167	52
COMMUNITY/ISP	1,791	64	1,855			5	20	21	1,809
Total Classified Male Population	19,098	262	19,360	146	1,211	3,084	4,764	4,756	5,399
Percent of Total				0.8%	6.3%	15.9%	24.6%	24.6%	27.9%
Unclassified Facilities:									
JAIL BACKLOG	285	3	288						
COUNTY JAIL CONTRACTS	66	2	68						
REVOKED TO JAIL	1	0	1						
REVOKED TO COMM CTR	0	0	0						
REVOKED-RET TO CUST FAC	160	41	201						
COMM/ISP REGRESSIONS	0	45	45						
ESCAPEES/WALKAWAYS	41	151	192						
Total Unclassified Facilities	553	242	795						
Total Male Population	19,651	504	20,155						
Female Population									
COLO WOMEN'S CORR FAC	216	2	218			48	43	63	64
DENVER WOMEN'S CORR FAC	814	5	819	16	23	134	111	320	215
LA VISTA CORR FAC	476	4	480			50	109	196	125
COLO CORR ALT PROGRAM	7	1	8				1	2	5
DENVER REC DIAG CTR INF	0	0	0						
COLO TERR CORR FAC INF.	0	0	0						
CONTRACTS:									
BRUSH CORR FAC	219	7	226			2	38	115	71
COMMUNITY/ISP	441	15	456			3	3	15	435
Total Classified Female Population	2,173	34	2,207	16	23	237	305	711	915
Percent of Total				0.7%	1.0%	10.7%	13.8%	32.2%	41.5%
Unclassified Facilities:									
JAIL BACKLOG	19	2	21						
COUNTY JAIL CONTRACTS	0	0	0						
REVOKED TO JAIL	0	0	0						
REVOKED TO COMM CTR	0	0	0						
REVOKED-RET TO CUST FAC	25	4	29						
COMM/ISP REGRESSIONS	0	11	11						
ESCAPEES/WALKAWAYS	2	36	38						
Total Unclassified Facilities	46	53	99						
Total Female Population	2,219	87	2,306						

COLORADO DEPARTMENT OF CORRECTIONS

ADULT INMATE JURISDICTIONAL POPULATION (1)

DATE: 9/6/2007

DATE	MALE POPULATION			FEMALE POPULATION			TOTAL POPULATION		
	Male Population	Net Change	Fiscal Y-T-D Average	Female Population	Net Change	Fiscal Y-T-D Average	Total Population	Net Change	Fiscal Y-T-D Average
03-31-07	20,155	75	40	2,306	-17	10	22,461	58	50
02-28-07	20,080	7		2,323	1		22,403	8	
01-31-07	20,073	43		2,322	2		22,395	45	
12-31-06	20,030	12		2,320	6		22,350	18	
11-30-06	20,018	44		2,314	11		22,332	55	
10-31-06	19,974	46		2,303	28		22,277	74	
09-30-06	19,928	139		2,275	33		22,203	172	
08-31-06	19,789	-34		2,242	-7		22,031	-41	
07-31-06	19,823	31		2,249	29		22,072	60	
06-30-06	19,792	153		2,220	25		22,012	178	
05-31-06	19,639	114		2,195	13		21,834	127	
04-30-06	19,525	89		2,182	28		21,707	117	
03-31-06	19,436	160		2,154	23		21,590	183	
02-28-06	19,276	31		2,131	-4		21,407	27	
01-31-06	19,245	53		2,135	-9		21,380	44	
12-31-05	19,192	117	97	2,144	7	12	21,336	124	109
11-30-05	19,075	32		2,137	9		21,212	41	
10-31-05	19,043	43		2,128	13		21,171	56	
09-30-05	19,000	71		2,115	-7		21,115	64	
08-31-05	18,929	183		2,122	19		21,051	202	
07-31-05	18,746	115		2,103	30		20,849	145	
06-30-05	18,631	123		2,073	43		20,704	166	
05-31-05	18,508	70		2,030	16		20,538	86	
04-30-05	18,438	102		2,014	32		20,452	134	
03-31-05	18,336	79		1,982	-10		20,318	69	
02-28-05	18,257	30		1,992	26		20,249	56	
01-31-05	18,227	-2		1,966	51		20,193	49	
12-31-04	18,229	56	68	1,915	11	27	20,144	67	95
11-30-04	18,173	79		1,904	27		20,077	106	
10-31-04	18,094	99		1,877	24		19,971	123	
09-30-04	17,995	-18		1,853	44		19,848	26	
08-31-04	18,013	95		1,809	44		19,822	139	
07-31-04	17,918	104		1,765	10		19,683	114	
06-30-04	17,814		49	1,755		11	19,569		60
06-30-03	17,226		57	1,620		10	18,846		67
06-30-02	16,539		87	1,506		14	18,045		101
06-30-01	15,493		63	1,340		6	16,833		70
06-30-00	14,733		99	1,266		7	15,999		106
06-30-99	13,547		75	1,179		14	14,726		89
06-30-98	12,647		81	1,016		9	13,663		89
06-30-97	11,681			909			12,590		

(1) Adult inmate jurisdictional population includes on-grounds, off-grounds, out-of-state, escapees, and jail backlog and excludes offenders sentenced to the Youthful Offender System (Y.O.S.).

COLORADO DEPARTMENT OF CORRECTIONS
ADULT INMATE RELEASES FROM PRISON
TOTAL Population (Male and Female)

Date: 9/6/2007

	Parole				Discharge					Other				Total
	Discretionary*	Mandatory*	Mand. Repar.*	Com. Supv.	Sentence	H.B. 1087	Martin/Cooper	Chgs/Det.	Com Spv. Elim	Probation	Ct. Ord. Dsch.	Appeal Bond	Deceased	
Mar-07	415	187	140	0	33	64	4	14	0	14	13	1	3	888
Feb-07	405	235	80	0	24	58	12	19	0	15	5	0	0	853
Jan-07	542	192	42	0	37	59	5	15	0	15	16	0	9	932
Dec-06	349	179	59	0	27	44	10	14	0	13	6	1	2	704
Nov-06	422	202	70	0	30	45	12	12	0	16	11	0	6	826
Oct-06	426	186	84	0	36	44	11	10	0	6	7	1	5	816
Sep-06	348	180	65	0	29	44	13	15	0	13	7	0	2	716
Aug-06	430	239	104	0	37	52	10	21	0	17	11	0	2	923
Jul-06	350	174	87	0	43	52	9	20	0	17	6	0	7	765
Jun-06	375	199	89	0	37	43	10	16	0	16	7	0	2	794
May-06	317	235	75	0	34	52	10	15	0	13	9	0	3	763
Apr-06	227	235	91	0	41	54	17	17	0	10	7	0	8	707
Mar-06	305	282	113	0	39	46	10	12	0	18	5	1	2	833
Feb-06	305	250	71	0	34	39	13	10	0	27	14	0	1	764
Jan-06	316	218	75	0	45	51	11	14	0	13	6	0	7	756
Dec-05	235	238	98	0	51	47	15	17	0	18	12	0	6	737
Nov-05	183	297	126	0	37	55	7	13	0	10	18	0	5	751
Oct-05	157	304	130	0	34	58	11	19	0	17	10	1	5	746
Sep-05	142	318	90	0	30	61	17	14	0	23	6	0	3	704
Aug-05	124	312	109	0	33	47	17	20	0	14	11	0	6	693
Jul-05	121	306	109	0	46	48	13	13	0	15	9	0	8	688
Jun-05	144	312	105	0	28	57	13	16	0	22	13	0	0	710
May-05	148	313	95	0	42	61	8	14	0	16	7	1	7	712
Apr-05	121	313	125	0	40	57	9	20	0	18	12	0	10	725

Definitions of Release Types

Discretionary parole-Released to parole through Parole Board discretion prior to mandatory release or sentence discharge date.

Mandatory parole-Released to parole on mandatory release date.

Mand. Repar-Reparoled on specific date set by Parole Board (includes S.B. 252 reparoles). n/a - breakout not available prior to June 2004.

Com. Supv.-Released to serve 12 months of community supervision.

Sentence discharge-Completion of sentence with no further supervision.

H.B. 1087 discharge-Completion of sentence with no further supervision, subject to earn time provisions of H.B. 95-1087.

Martin/ Cooper discharge-Completion of sentence with no further supervision, sex offender subject to Martin/Cooper Supreme Court decision.

Chgs/ Det. discharge-Completion of sentence, released to other law enforcement for pending charges or detainees.

Com. Spv. Elim discharge-Completion of sentence following reincarceration on community supervision sentence.

Probation-Released by court to probation.

Ct. Ord. Dsch.-Released by court order.

Appeal Bond-Released by court to appeal bond.

Deceased-Offender death in prison.

***Due to the decrease in community transportation services, the Department implemented a procedural change in December 2005 with regards to releasing inmates on weekends. As a result of this change, discretionary releases have increased and mandatory releases have decreased.**

COLORADO DEPARTMENT OF CORRECTIONS
ADULT INMATE RELEASES FROM PRISON
Male Population Only

Date: 9/6/2007

	Parole				Discharge					Other				Total
	Discretionary*	Mandatory*	Mand. Repar.*	Com. Supv.	Sentence	H.B. 1087	Martin/Cooper	Chgs/Det.	Com Spv. Elim	Probation	Ct. Ord. Dsch.	Appeal Bond	Deceased	
Mar-07	344	166	118	0	28	56	4	14	0	10	13	0	3	756
Feb-07	330	209	71	0	23	51	11	16	0	14	5	0	0	730
Jan-07	453	169	37	0	34	53	5	15	0	14	13	0	7	800
Dec-06	298	160	56	0	24	38	10	14	0	13	6	1	2	622
Nov-06	358	178	62	0	28	42	12	12	0	13	10	0	6	721
Oct-06	373	163	73	0	34	36	11	9	0	6	6	1	5	717
Sep-06	300	148	59	0	29	40	13	12	0	12	7	0	2	622
Aug-06	364	209	89	0	34	44	10	21	0	14	10	0	2	797
Jul-06	310	158	72	0	40	45	9	18	0	15	4	0	7	678
Jun-06	325	180	74	0	32	41	10	13	0	15	6	0	2	698
May-06	269	202	60	0	33	47	10	15	0	12	8	0	3	659
Apr-06	178	213	79	0	35	47	17	16	0	9	6	0	8	608
Mar-06	267	246	100	0	36	41	10	12	0	14	5	1	2	734
Feb-06	253	220	63	0	33	37	13	10	0	25	14	0	1	669
Jan-06	266	187	63	0	43	48	11	13	0	12	5	0	6	654
Dec-05	193	204	84	0	48	43	15	17	0	16	11	0	4	635
Nov-05	156	251	114	0	32	47	7	12	0	10	17	0	4	650
Oct-05	127	273	101	0	32	50	11	17	0	15	10	1	4	641
Sep-05	111	283	78	0	26	57	16	12	0	22	6	0	3	614
Aug-05	98	280	94	0	31	41	17	19	0	12	8	0	6	606
Jul-05	100	253	95	0	43	47	13	13	0	11	8	0	8	591
Jun-05	113	280	94	0	25	52	13	13	0	20	13	0	0	623
May-05	127	270	83	0	39	54	8	14	0	15	6	1	6	623
Apr-05	103	270	109	0	37	49	9	20	0	16	8	0	10	631

Definitions of Release Types

Discretionary parole-Released to parole through Parole Board discretion prior to mandatory release or sentence discharge date.

Mandatory parole-Released to parole on mandatory release date.

Mand. Repar-Reparoled on specific date set by Parole Board (includes S.B. 252 reparoles). n/a - breakout not available prior to June 2004.

Com. Supv.-Released to serve 12 months of community supervision.

Sentence discharge-Completion of sentence with no further supervision.

H.B. 1087 discharge-Completion of sentence with no further supervision, subject to earn time provisions of H.B. 95-1087.

Martin/ Cooper discharge-Completion of sentence with no further supervision, sex offender subject to Martin/Cooper Supreme Court decision.

Chgs/ Det. discharge-Completion of sentence, released to other law enforcement for pending charges or detainees.

Com. Spv. Elim discharge-Completion of sentence following reincarceration on community supervision sentence.

Probation-Released by court to probation.

Ct. Ord. Dsch.-Released by court order.

Appeal Bond-Released by court to appeal bond.

Deceased-Offender death in prison.

***Due to the decrease in community transportation services, the Department implemented a procedural change in December 2005 with regards to releasing inmates on weekends. As a result of this change, discretionary releases have increased and mandatory releases have decreased.**

COLORADO DEPARTMENT OF CORRECTIONS
ADULT INMATE RELEASES FROM PRISON
Female Population Only

Date: 9/6/2007

	Parole				Discharge					Other				Total
	Discretionary*	Mandatory*	Mand. Repar.*	Com. Supv.	Sentence	H.B. 1087	Martin/Cooper	Chgs/Det.	Com Spv. Elim	Probation	Ct. Ord. Dsch.	Appeal Bond	Deceased	
Mar-07	71	21	22	0	5	8	0	0	0	4	0	1	0	132
Feb-07	75	26	9	0	1	7	1	3	0	1	0	0	0	123
Jan-07	89	23	5	0	3	6	0	0	0	1	3	0	2	132
Dec-06	51	19	3	0	3	6	0	0	0	0	0	0	0	82
Nov-06	64	24	8	0	2	3	0	0	0	3	1	0	0	105
Oct-06	53	23	11	0	2	8	0	1	0	0	1	0	0	99
Sep-06	48	32	6	0	0	4	0	3	0	1	0	0	0	94
Aug-06	66	30	15	0	3	8	0	0	0	3	1	0	0	126
Jul-06	40	16	15	0	3	7	0	2	0	2	2	0	0	87
Jun-06	50	19	15	0	5	2	0	3	0	1	1	0	0	96
May-06	48	33	15	0	1	5	0	0	0	1	1	0	0	104
Apr-06	49	22	12	0	6	7	0	1	0	1	1	0	0	99
Mar-06	38	36	13	0	3	5	0	0	0	4	0	0	0	99
Feb-06	52	30	8	0	1	2	0	0	0	2	0	0	0	95
Jan-06	50	31	12	0	2	3	0	1	0	1	1	0	1	102
Dec-05	42	34	14	0	3	4	0	0	0	2	1	0	2	102
Nov-05	27	46	12	0	5	8	0	1	0	0	1	0	1	101
Oct-05	30	31	29	0	2	8	0	2	0	2	0	0	1	105
Sep-05	31	35	12	0	4	4	1	2	0	1	0	0	0	90
Aug-05	26	32	15	0	2	6	0	1	0	2	3	0	0	87
Jul-05	21	53	14	0	3	1	0	0	0	4	1	0	0	97
Jun-05	31	32	11	0	3	5	0	3	0	2	0	0	0	87
May-05	21	43	12	0	3	7	0	0	0	1	1	0	1	89
Apr-05	18	43	16	0	3	8	0	0	0	2	4	0	0	94

Definitions of Release Types

Discretionary parole-Released to parole through Parole Board discretion prior to mandatory release or sentence discharge date.

Mandatory parole-Released to parole on mandatory release date.

Mand. Repar-Reparoled on specific date set by Parole Board (includes S.B. 252 reparoles). n/a - breakout not available prior to June 2004.

Com. Supv.-Released to serve 12 months of community supervision.

Sentence discharge-Completion of sentence with no further supervision.

H.B. 1087 discharge-Completion of sentence with no further supervision, subject to earn time provisions of H.B. 95-1087.

Martin/ Cooper discharge-Completion of sentence with no further supervision, sex offender subject to Martin/Cooper Supreme Court decision.

Chgs/ Det. discharge-Completion of sentence, released to other law enforcement for pending charges or detainees.

Com. Spv. Elim discharge-Completion of sentence following reincarceration on community supervision sentence.

Probation-Released by court to probation.

Ct. Ord. Dsch.-Released by court order.

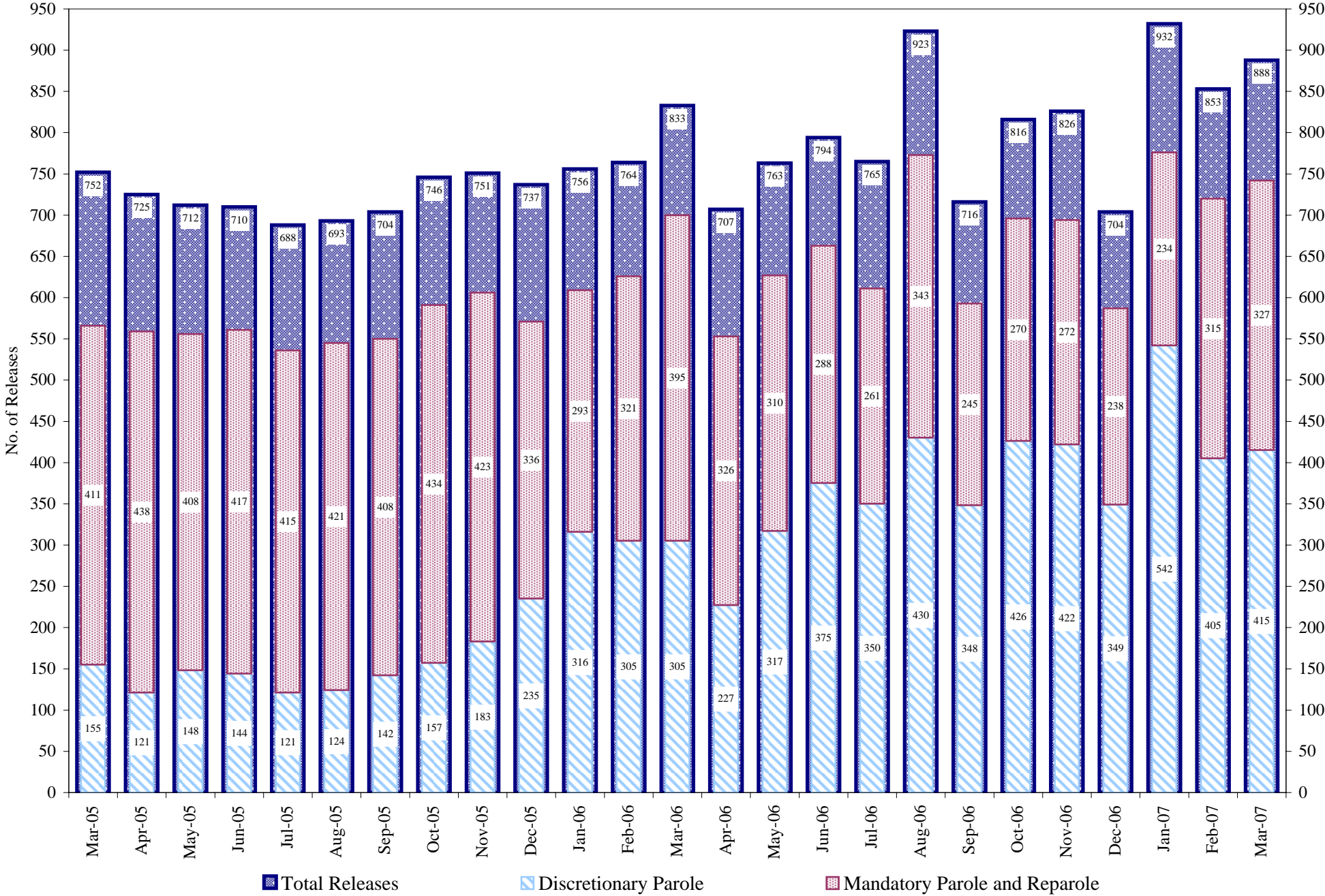
Appeal Bond-Released by court to appeal bond.

Deceased-Offender death in prison.

***Due to the decrease in community transportation services, the Department implemented a procedural change in December 2005 with regards to releasing inmates on weekends. As a result of this change, discretionary releases have increased and mandatory releases have decreased.**

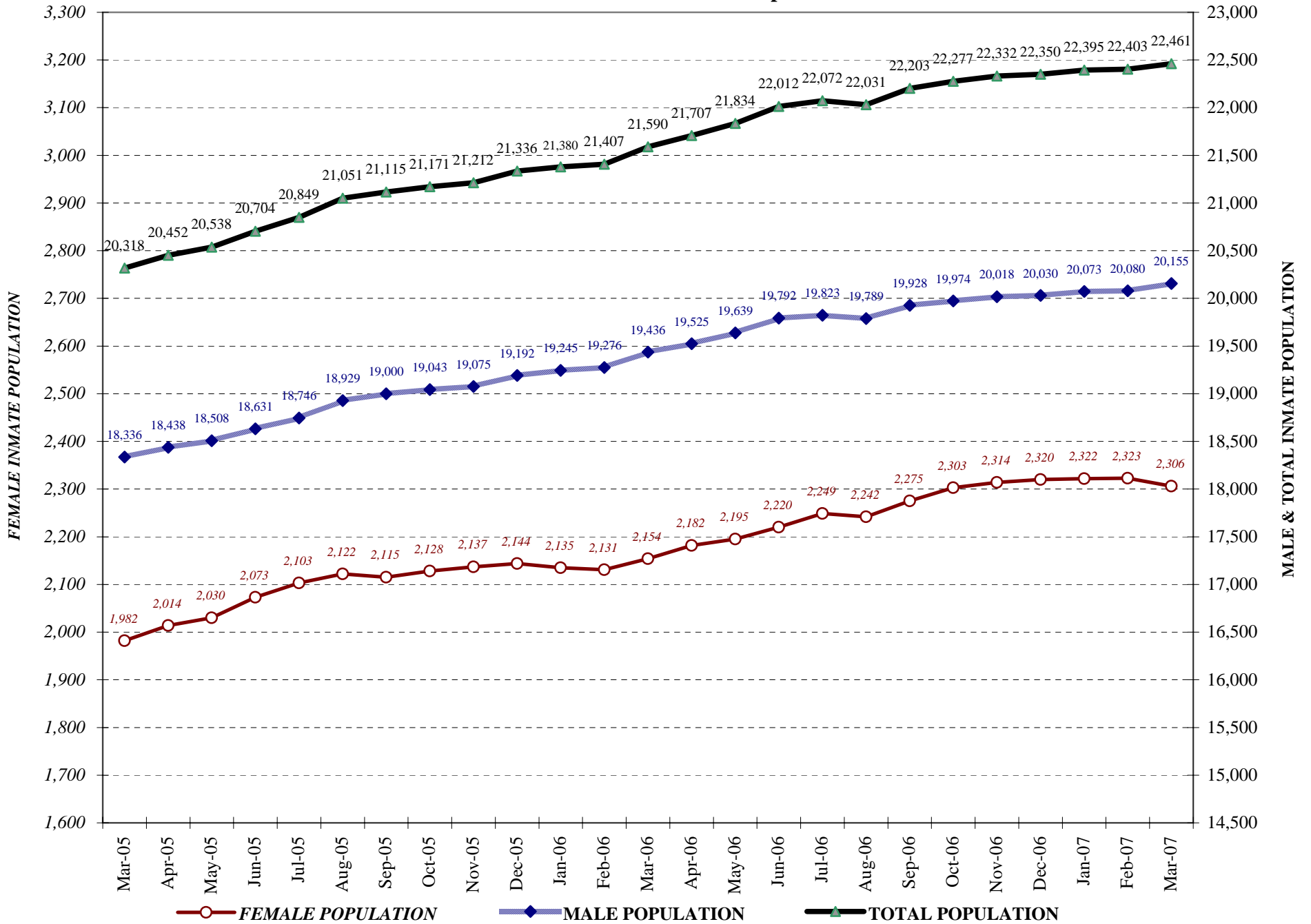
COLORADO DEPARTMENT OF CORRECTIONS

Adult Prison Releases

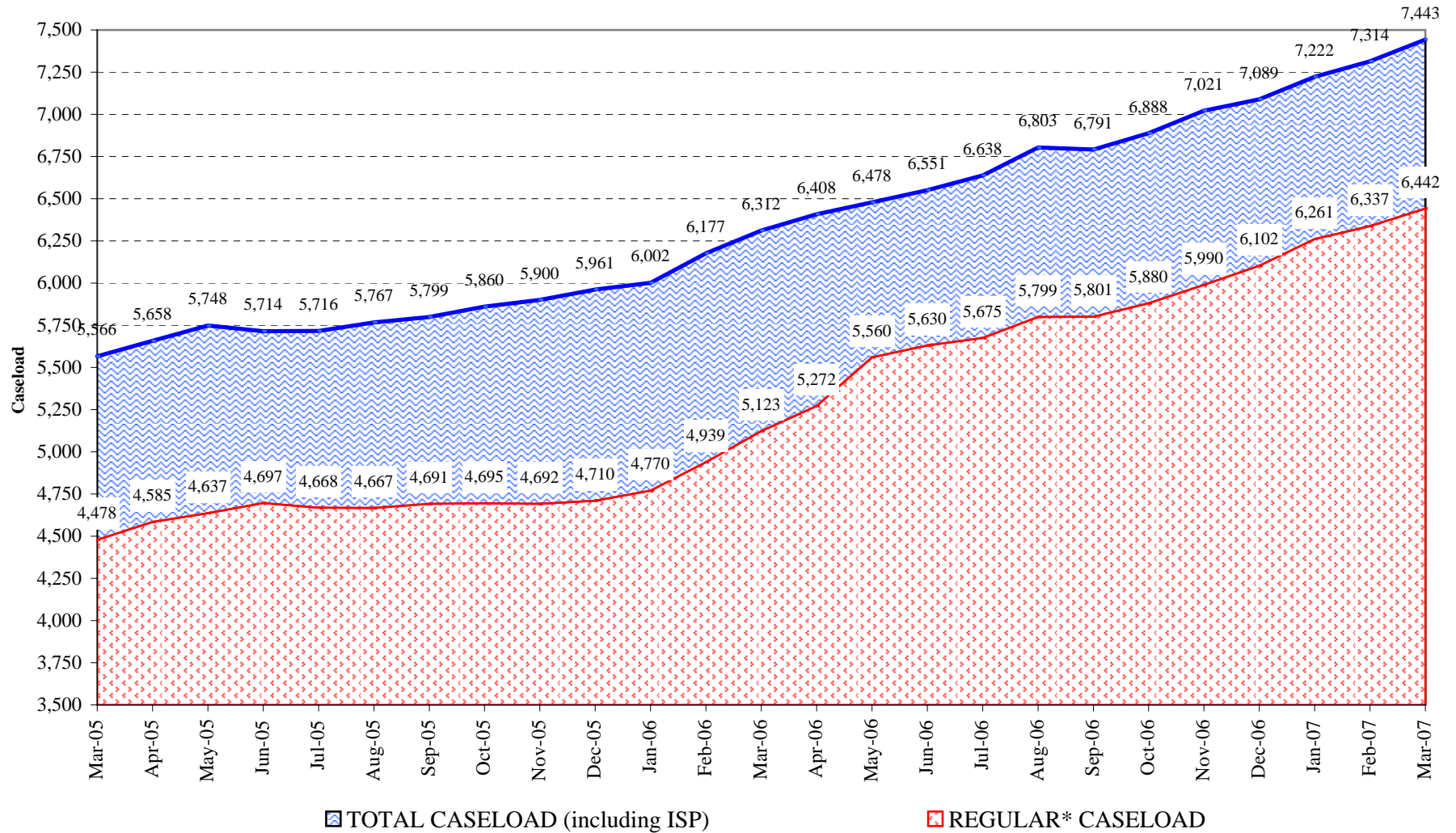


Total releases include releases to discretionary parole, mandatory parole and reparole, all types of discharges and other releases as detailed on the previous page.

COLORADO DEPARTMENT OF CORRECTIONS Adult Jurisdiction Inmate Population



COLORADO DEPARTMENT OF CORRECTIONS Parole Population



* Regular caseload includes interstate parole, but excludes out-of-state parolees and absconders.